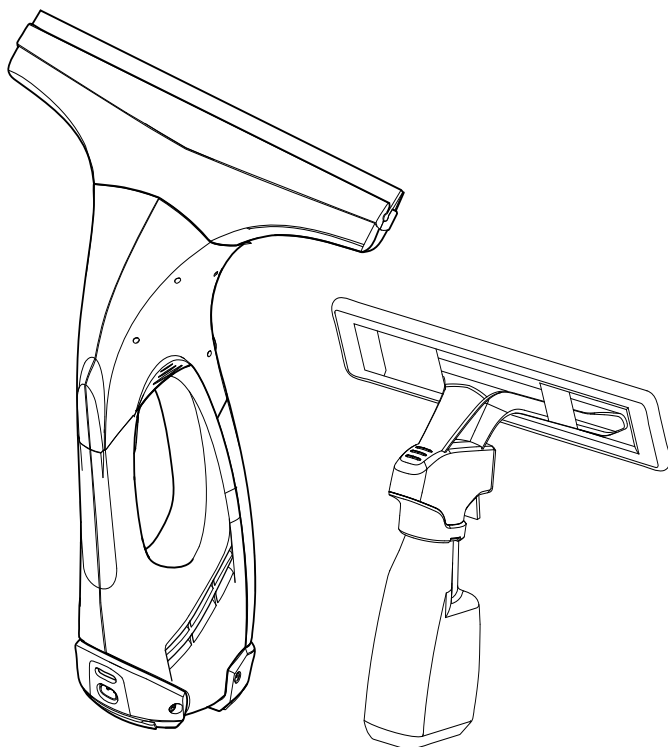


English . . . . . 2  
Français . . . . . 9  
Español . . . . . 17



# Window Cleaner OPERATOR MANUAL

IMPORTANT SAFETY INSTRUCTIONS .....	3
Start up .....	4
Finish up your work / clean appliance	7
Troubleshooting .....	7
Disposal of Appliances .....	8

## Specifications

Type of protection	IP X4	
Volume of dirt water reservoir	3,3	oz.
Operating time with full charge	20	min
Rated power of appliance	12	W
Charging current for empty battery	3	h
Rated charger voltage	5,5	V
Nominal current of charger	600	mA
Weight	1,5	lbs
Battery type	Li-Ion	
Nominal battery voltage	3,6	V
Power Input	120-127 V 60 Hz	
Part No.	1.633-133.0	

**Subject to technical modifications!**

## Proper use

- Use this battery operated appliance only for personal use, for cleaning moist, smooth surfaces such as windows, mirrors or tiles. Not meant for the vacuum of dust.
- The appliance is not intended to vacuum up larger amounts of fluids from horizontal surfaces, such as from a tipped drinking glass (max. 0,8 oz.).
- Only use this appliance with conventional window cleaners (no spirit, no foam cleaners).
- Please use this appliance only with accessories and spare parts approved by KÄRCHER.

Any use extending beyond what is listed above is not considered as proper use. The manufacturer is not liable for any losses resulting from improper use.

## Customer Support USA and Canada

To register this product, please visit:

**[www.karcher-register.com](http://www.karcher-register.com)**

For technical support, go to:

**[www.karcher-help.com](http://www.karcher-help.com)**

If you need to file a warranty claim, please call: **1-800-537-4129**

You will need to fax or email your receipt to a customer service agent. All other information can be found at:

**[www.karcherresidential.com](http://www.karcherresidential.com)**

## Customer Support Mexico

Call: **01-800-024-13-13** for help or visit our website: **[www.karcher.com.mx](http://www.karcher.com.mx)**

# IMPORTANT SAFETY INSTRUCTIONS

When using this product basic precautions should always be followed, including the following:

## READ ALL INSTRUCTIONS BEFORE USING THIS APPLIANCE

### **⚠ Warning**

To reduce the risk of fire, electric shock, or injury:

- Do not leave appliance unattended when plugged in. Unplug from outlet when not in use and before servicing.

### **⚠ Warning**

To reduce the risk of electric shock:

- Do not expose to rain. Store indoors.
- Do not allow to be used as a toy. Close attention is necessary when used by or near children.
- Use only as described in this manual. Use only manufacturer's recommended attachments.
- Do not use with damaged cord or plug. If appliance is not working as it should, has been dropped, damaged, left outdoors, or dropped into water, return it to a service center.
- Do not pull or carry by the cord, do not use cord as a handle, do not close a door on the cord, or pull cord around sharp edges or corners. Do not run appliance over cord. Keep cord away from heated surfaces.
- Do not unplug by pulling cord. To unplug, grasp plug.
- Do not handle plug or appliance with wet hands.
- Do not put any objects into openings. Do not use if openings are blocked; keep free of dust, lint, hair, and anything that may reduce air flow.
- Keep hair, loose clothing, fingers, and all parts of the body away from openings and moving parts.
- Use extra care when cleaning on stairs.
- Turn off all controls before unplugging.

- Do not use to pick up flammable or combustible liquids, such as gasoline, or use in areas where they may be present.
- Do not charge the unit outdoors.
- Use only the charger supplied by the manufacturer to recharge.
- Do not incinerate the appliance even if it severely damaged. The batteries can explode in fire.
- Do not spray jet into eyes.
- Do not direct the spray jet directly on equipment containing electrical components, such as the interior of ovens.
- Prior to using this appliance on sensitive (high shine) surfaces, test the microfibre wiping pad at an inconspicuous location.

## SAVE THESE INSTRUCTIONS !

### **Information regarding the battery**

- **Short circuit hazard!** Do not insert conductive objects (such as screwdrivers or similar) into the charger plug.
- You may recharge the battery using only the original charger provided with the appliance or a charger approved by KÄRCHER.

### **Tips for using the battery charger**

- In case of visual damage, replace the charger with original manufacturer suggested parts.
- The voltage indicated on the type plate must correspond to the supply voltage.
- Only use and store the charger in dry rooms, ambient temperature 41 - 104 °F (5 - 40 °C).
- Never touch the mains plug with wet hands.

### **Information regarding the transport**

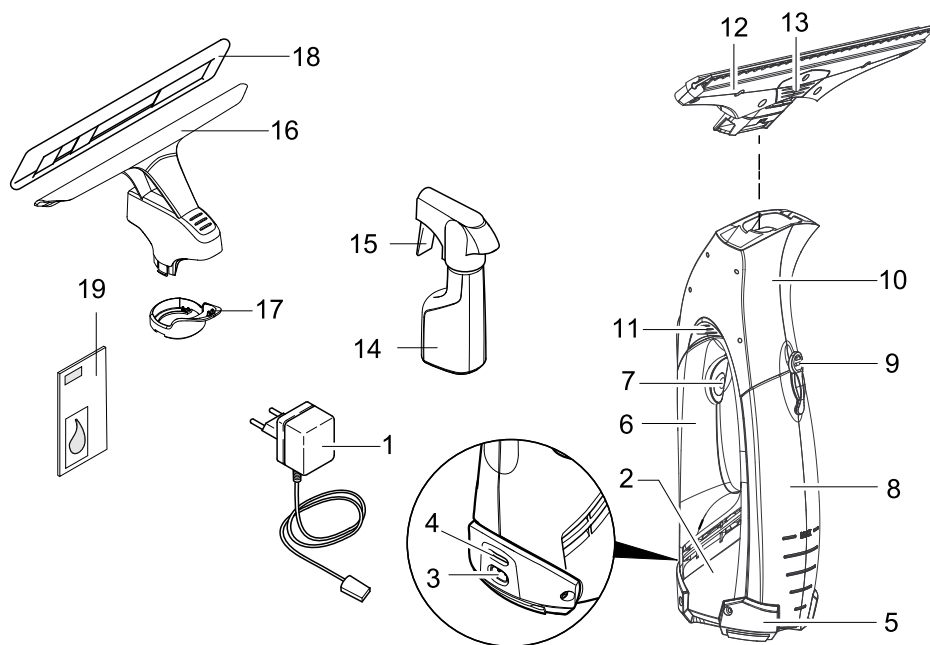
- The battery has been tested as per the relevant directives for international transport and can be transported/shipped.

# Start up

## Description of the Appliance

When unpacking the product, make sure that no accessories are missing and that none of the package contents have been damaged. If you detect any transport damages please contact your retailer.

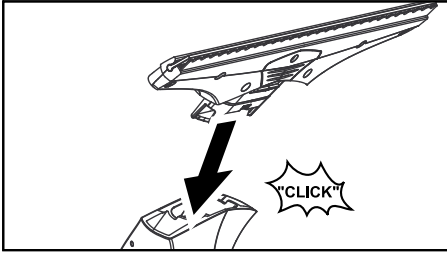
- 1 Charger with charging cable
- 2 **Basic appliance**
- 3 Charging box
- 4 Charge/operations display
- 5 Support leg
- 6 Handle
- 7 ON/OFF switch for appliance
- 8 Dirt water reservoir, removable
- 9 Lock, dirt water reservoir
- 10 **Suction head**
- 11 Release, suction head
- 12 Attachment with removable lips
- 13 Release, attachment
- 14 Spray bottle
- 15 Spray lever
- 16 Wiping attachment
- 17 Fixating ring
- 18 Micro-fibre wiping pad
- 19 Window cleaner concentrate



**For household use only!**

## Assemble the appliance

- Place the attachment on the suction head with the removable lips until you hear it lock in.

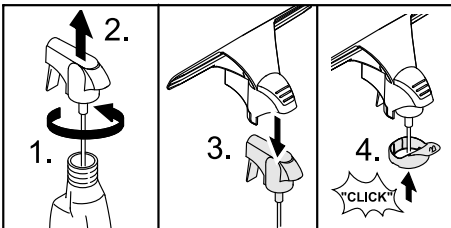


## Attach the spray bottle and wiper attachment and fill it with detergent

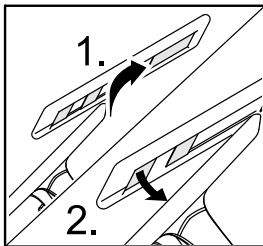
**Note:** Please note that after first activation of the spray head transport lock will loosen.

### Attach the wiping attachment

- Remove the spray head from the spray bottle.
- Attach the wiper attachment to the spray head.
- Secure the wiper attachment and the spray head with the fixating ring.

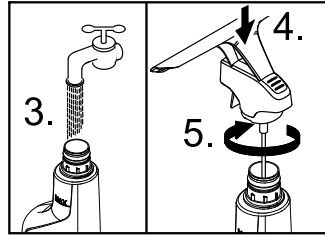
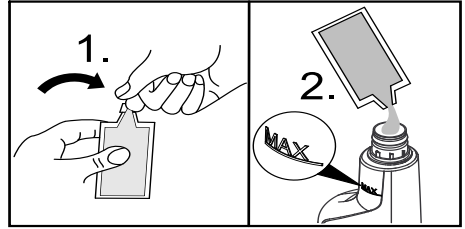


- Attach the wiper pad to the wiper attachment and secure with Velcro.



## Fill the spray bottle

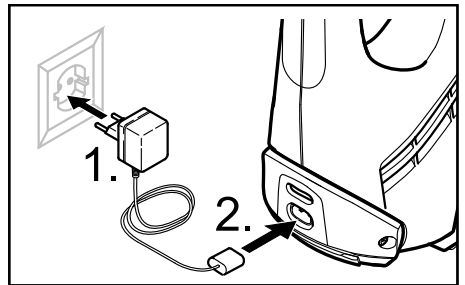
- Fill the included concentrate (1 x 20 ml) into the spray bottle and fill the bottle slowly with clear water (makes 250 ml of detergent solution).



- Close the bottle.

## Charge the battery

- Insert the charger delivered with the appliance into a proper socket.
- Insert the charging cable plug to the back of the appliance.



**Note:** During the charging process, the charge/operating display blinks. Once the battery is fully charged, it will be permanently illuminated.

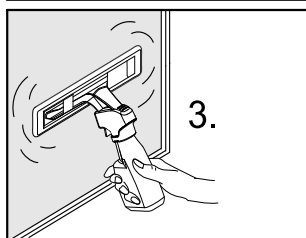
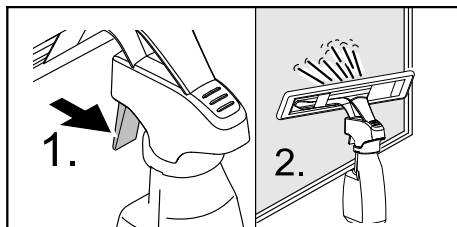
**Recharge the battery after finishing your work.**

## Start working

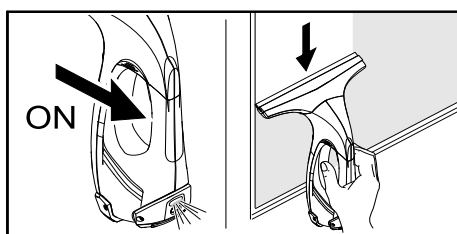
### Cleaning with spray bottle and wiper attachment\*

- Press the spray lever on the bottle to apply the detergent and spray the surface evenly; after that, loosen the dirt using the wiping pad.

**Note:** Rinse pad under running water if needed!



- Switch the appliance on, the charge/operations display will illuminate.
- Pull the appliance from the top to the bottom to vacuum up the detergent.



**Note:** Hard to reach areas can be vacuumed vertically or horizontally (limited areas).

### Notes:

If the battery is low, the charging / power indicator starts flashing slowly and the appliance switches off after a certain time. If this is the case, charge the battery.

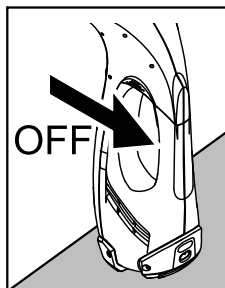
Switch the appliance off after each cleaned surface. This will increase your operating time per battery charge.

### Cleaning without the spray bottle

- Apply the detergent as usual according to manufacturer's instructions and loosen the dirt.
- Further procedure same as the "Cleaning with spray bottle and wiper attachment".

## Interrupting the work

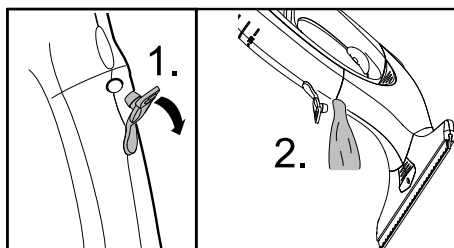
- Set the appliance on the support leg (parking position) and switch it off.



## Emptying the reservoir during operation

Once the max. fill level (mark) of the dirt water reservoir is reached, please empty the tank.

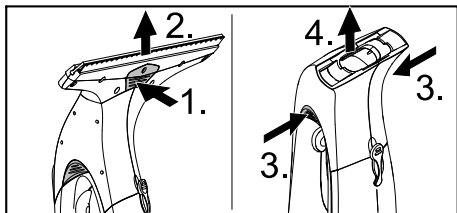
- Turn off the appliance.
- Pull off the lock of the dirt water reservoir and empty the tank.



- Close the dirt water reservoir.

## Finish up your work / clean appliance

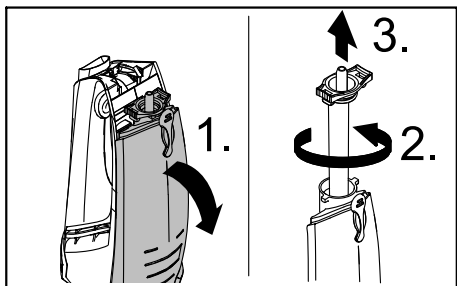
- Turn off the appliance.
- First, release the attachment with the pull-off lips and remove it from the suction head, then release the suction head and remove.



- Clean the suction head and the attachment with the pull-off lips under running water (do not wash in dishwasher).

**Caution:** The basic appliance contains electrical components. Do not clean this under running water!

- Remove the dirt water reservoir, rotate the lock and pull out.



- Empty the reservoir and rinse with clear water. Close the reservoir again.
- Let the cleaned appliance dry prior to assembly.
- Charge the battery.

## Storing the Appliance

- Store the appliance upright in a dry room.

## Troubleshooting

### Machine does not start

Check the charge/operations display:

- No signal or slowly blinking signal: Charge the battery.
- With a rapidly blinking signal: Inform your dealer.

### Streaks while cleaning

- Clean the pull-off lip.
- Turn the upper pull-off lip around by pulling it out to the side, turning it around and reinserting it.
- Replace pull-off lip if required.
- Adjust the dosing of cleaning solution.

### Water is leaking from the air louvers

- Empty the dirt water reservoir (max. 3,3 oz. content).

## Replacement parts

To purchase replacement parts please visit [www.buykarcher.com](http://www.buykarcher.com)

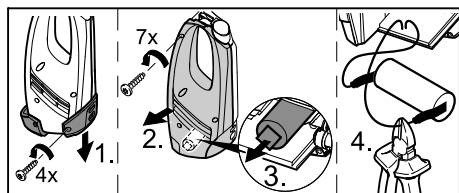
## Disposal of Appliances

This appliance includes a built-in battery pack; please remove this battery pack before disposing of the old appliance.

### Remove battery pack and dispose of

→ The appliance may only be opened in order to dispose of the battery pack.

**Caution** when opening the appliance  
**avoid short circuits.**



→ Remove the battery pack and dispose of properly (at a collection site or the dealer).

#### **⚠ Warning**

- **Do not open the battery**, as there is a risk of an electrical shock; also, irritating or caustic vapors can escape.
- **Do not expose the battery to direct sunlight, heat or fire**, there is a risk of explosion.