

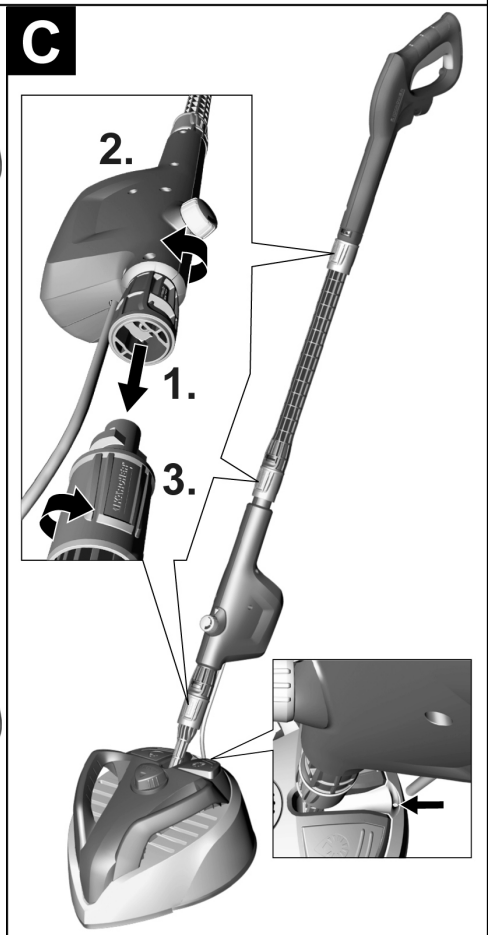
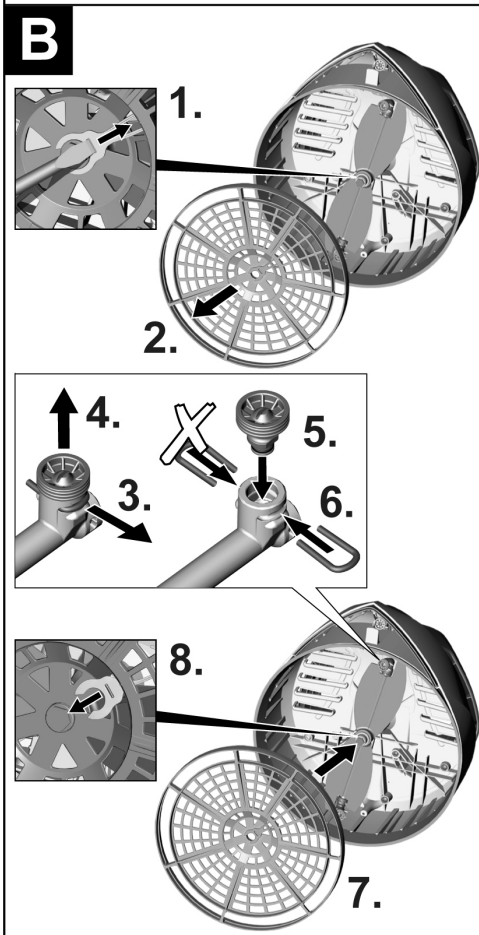
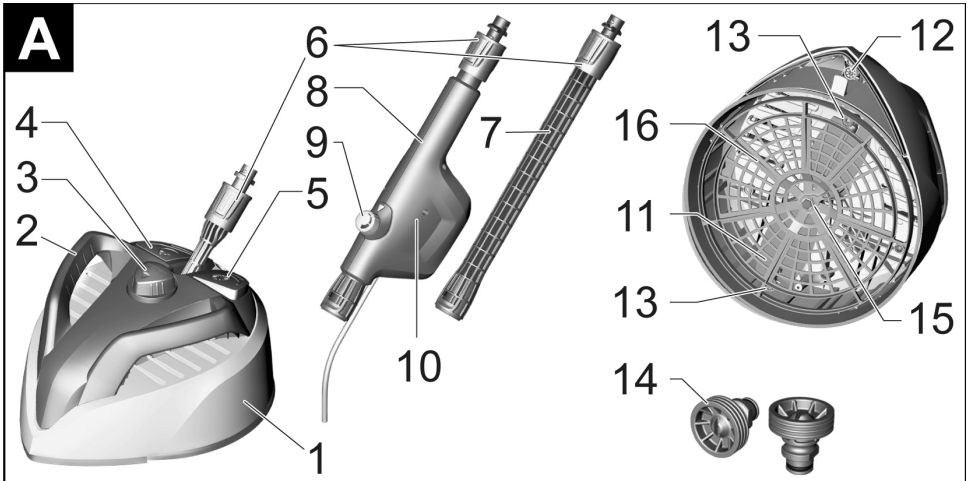
T 550 T-Racer Surface Cleaner

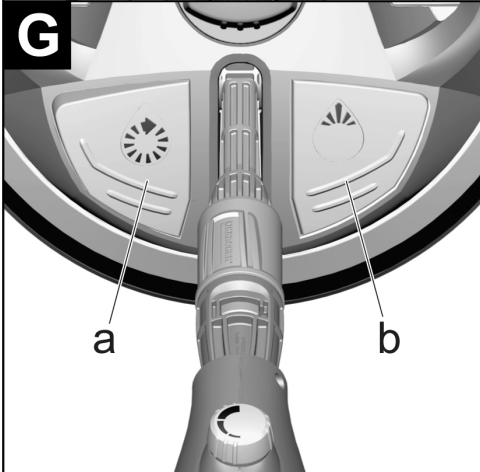
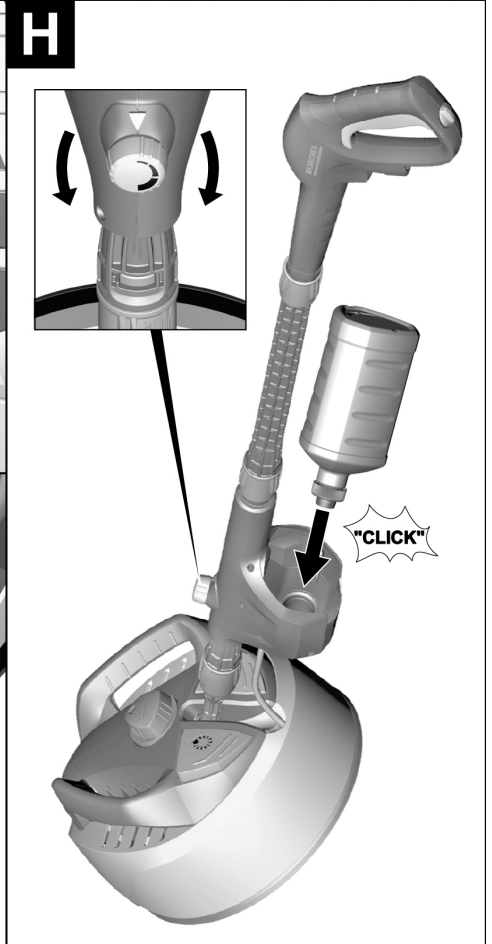
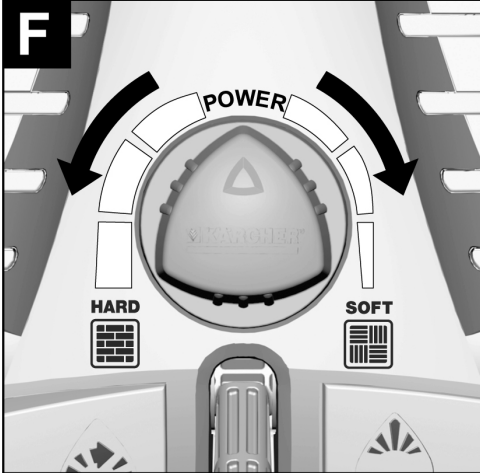
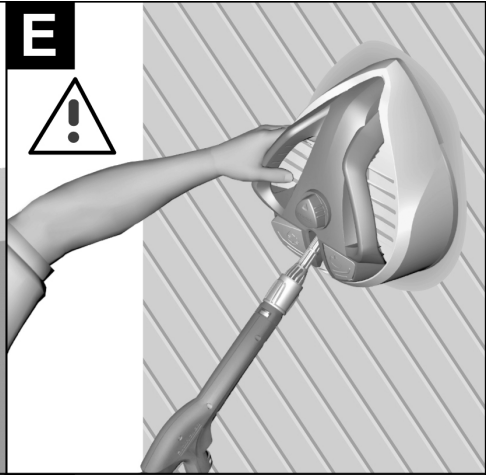
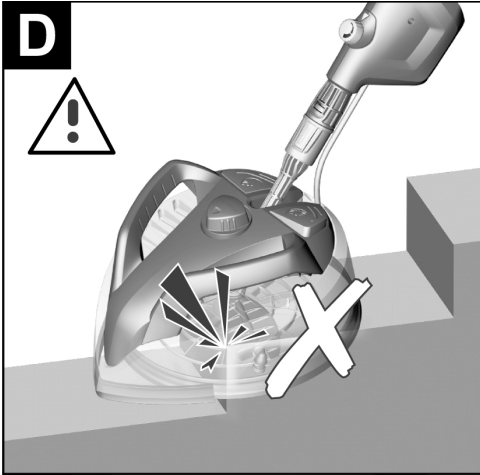


Deutsch	4
English	7
Français	13
Italiano	16
Nederlands	19
Español	22
Português	25
Dansk	28
Norsk	31
Svenska	34
Suomi	37
Ελληνικά	40
Türkçe	43
Русский	46
Magyar	50
Čeština	53
Slovenščina	56
Polski	59
Românește	62
Slovenčina	65
Hrvatski	68
Srpski	71
Български	74
Eesti	78
Latviešu	81
Lietuviškai	84
Українська	87
中文	90
العربية	J7

Register and win!
www.karcher.com/register-and-win







General information



Please read and comply with these original instructions prior to the initial operation of your appliance and store them for later use or subsequent owners.

Proper use

The T-Racer can be used with all Kärcher Home & Garden pressure washers of the categories K4 to K7.

For units constructed in 1991 and earlier you need an additional adapter (order no.: 2.642-893.0).

The T-Racer is ideally suited for the cleaning of floor and wall surfaces made of different materials, such as wood, plastic, concrete, tiles, and natural stone, as well as for cleaning Japanese gardens and pebbled surfaces. Use the T-Racer exclusively in your private household.

Symbols



△DANGER

Do not reach under the edge of the T-Racer during operation!



HARD

For sturdy surfaces (e.g. tiles, concrete, stone).



SOFT

For sensitive surfaces (e.g. wood).

Environmental protection



The packaging material can be recycled. Please do not place the packaging into the ordinary refuse for disposal, but arrange for the proper recycling.



Old appliances contain valuable materials that can be recycled. Please arrange for the proper recycling of old appliances. Please dispose your old appliances using appropriate collection systems.



Work with detergents must only be performed on liquid-tight work surfaces with connections to the wastewater runoff. Do not let release detergent into waters or earth.

Notes about the ingredients (REACH)

You will find current information about the ingredients at:

www.kaercher.com/REACH

Warranty

The warranty terms published by the relevant sales company are applicable in each country. We will repair potential failures of your appliance within the warranty period free of charge, provided that such failure is caused by faulty material or defects in manufacturing. In the event of a warranty claim please contact your dealer or the nearest authorized Customer Service centre. Please submit the proof of purchase.

Spare parts

Use only original KÄRCHER spare parts. You will find a list of spare parts at the end of these operating instructions.

Safety instructions

- *Please observe the safety instructions of your high-pressure cleaner.*
- *Only trigger the high-pressure jet at the high-pressure gun if the T-Racer is located on the surface to be cleaned.*
- *There must be no persons in the immediate vicinity of the cleaning head.*
- *Beware of the recoil! Make sure that you have a firm footing and hold the high-pressure gun with the extension tube or handle firmly.*
- *Upon completion of the cleaning operation, switch off the high-pressure cleaner. When working on the T-Racer, disconnect it from the high-pressure gun as well.*
- *Maximum water temperature 60°C (please observe the instructions for your high-pressure cleaner).*
- *This appliance was designed to be used with detergents which are supplied or recommended by the manufacturer. The use of other detergents or chemicals may compromise the safety of the appliance.*
- *Do not spray flammable liquids.*

- **Never draw in fluids containing solvents or undiluted acids and solvents! This includes petrol, paint thinner and heating oil. The spray mist is highly inflammable, explosive and poisonous. Do not use acetone, undiluted acids and solvents, as they corrode the materials used on the appliance.**

Description of the Appliance

When unpacking the product, make sure that no accessories are missing and that none of the package contents have been damaged. If you detect any transport damages please contact your dealer.

→ Illustration **A**

- 1 Casing
- 2 Handle
- 3 Twist grip Power (for adjustment of the cleaning pressure)
- 4 Foot pedal for edge cleaning
- 5 Foot pedal for surface cleaning
- 6 Bayonet connection with union nut
- 7 Extension tube
- 8 Extension tube detergent
- 9 Dosage regulator for detergent
- 10 Retainer Plug 'n' Clean detergent bottle
- 11 Rotor arm
- 12 Green high-pressure nozzle
- 13 Yellow high pressure nozzles (2 pieces)
- 14 Grey high-pressure nozzles (2 pieces)
- 15 Safety clip
- 16 Protective grid

Preparing the Appliance

Selecting the high pressure nozzles

You need to use the matching high pressure nozzles to ensure that your high pressure cleaner works properly.
Note

Nominal pressure (p): See operating instructions or type plate of your pressure washer.

High-pressure cleaner with nominal pressure (p) of 13 MPa (130 bar) to 16 MPa (160 bar)

e.g.: K 6 – K 7, Kärcher 600 – Kärcher 770

→ Use yellow high-pressure nozzles.

Note

The yellow high-pressure nozzles have already been installed.

High-pressure cleaner with nominal voltage (p) lesser than 13 MPa (130 bar)

e.g.: K 4 – K 5, Kärcher 201 – Kärcher 560

→ Use grey high-pressure nozzles.

Changing the high pressure nozzles

→ Illustration **B**

- 1 Loosen the safety clamp with a screwdriver.
- 2 Remove the protective grid.
- 3 Remove the clip.
- 4 Pull out the yellow high-pressure nozzle.
- 5 Insert the grey high-pressure nozzle.
- 6 Reinsert the clip.
- 7 Mount the protective grid on the pin.
- 8 Push the safety clamp in until it locks.

Application

Note

Always use Kärcher water filter (order no. 4.730-059.0) during suction operations of the high-pressure cleaner.

Cleaning floor surfaces

■ **Apply detergent solution**

Fasten the T-Racer with the extension tube detergent and the extension tube to the high-pressure gun.

→ Illustration **C**

- 1 Press the extension tube detergent onto the bayonet connection of the T-Racer.
- 2 Turn it by 90° until it locks into place.
- 3 Tighten the union nut.

Repeat this process even for the other joints.

Insert the detergent supply hose into the T-Racer.

→ Illustration **D**

→ Adjust the twist grip "Power" in accordance with the surface to be cleaned.

→ Remove the lid from the Plug 'n' Clean detergent bottle and press the detergent bottle into the detergent connection with the opening facing down.

→ Adjust the suction volume of the detergent solution by means of the dosage regulator for detergents.

→ Unlock the lever on the trigger gun.

→ Pull on the lever of the trigger gun; the device will switch on.

■ **Cleaning floor surfaces**

Set the dosing regulator for detergent to minimum and clean the floor area again.

Tips for cleaning

- *Outdoor surfaces should be swept before the T-Racer is used to avoid damaging the high-pressure nozzles.*
- *Prior to use on sensitive surfaces (e.g. wooden surfaces), test the product on an imperceptible spot, in order to promptly detect any changes in the surface.*
- *The T-Racer is not suited for scouring or scrubbing!*
- *Guide the T-Racer over the surface without effort.*
- *Do not remain at one spot; always keep moving during cleaning.*


△ **CAUTION**

Do not run over protruding corners!

→ Illustration **D**

Working with detergent

The most commonly used KÄRCHER detergents can be purchased ready to use in their Plug 'n' Clean detergent bottles with locking lids. This will make the pesky refilling and filling processes redundant.

Illustration 

- Remove the lid from the Plug 'n' Clean detergent bottle and press the detergent bottle into the detergent connection with the opening facing down.
- Adjust the suction volume of the detergent solution by means of the dosage regulator for detergents.

Note

- Bring the bottleneck into an upright position to completely empty the detergent bottle.
- Turn the detergent bottle around after cleaning, close it and place it in the retainer for the Plug 'n' Clean detergent bottle.
- Clean gravel surfaces without detergent.
- Do not adjust the detergent supply via the dosing regulator for detergents while under pressure.


Cleaning wall surfaces

Fasten the T-Racer directly to the high-pressure gun.

- 1 Press the bayonet connection of the T-Racer into the connection of the high-pressure gun, then turn by 90° until it locks into place.
 - 2 Tighten the union nut.
- Adjust the twist grip "Power" in accordance with the surface to be cleaned.

⚠ CAUTION


Always hold the T-Racer at the handle while cleaning the walls.

- Illustration 

Control elements

"Power" turning handle

The turning handle "power" is used to change the distance of the high-pressure nozzles to the surface to be cleaned.

- Illustration 


Sturdy surfaces (e.g. tiles, concrete, stone)

- Set turning handle "power" to "HARD".
For the effective cleaning of hard-to-remove contamination.


Sensitive surfaces (e.g. wood)

- Set turning handle "power" to "SOFT".
For the gentle cleaning of sensitive surfaces.

Foot pedal for surface cleaning

- Illustration 
For normal surface cleaning, operate the foot switch for surface cleaning (a).
A water stream will be emitted from the two high-pressure nozzles in the rotor arm.

Foot pedal for edge cleaning

- Illustration 
For edge and corner cleaning, operate the foot switch for edge cleaning (b).
A water stream will be emitted from green high-pressure nozzle.

Note

For edge and corner cleaning no detergent is added. In order to achieve the optimum cleaning result, guide the T-Racer along the corners.

Dosage regulator for detergent

- Illustration 

The detergent supply is adjusted by means of the dosing regulator for detergent.

Tip

You can use the extension pipe with any Kärcher accessory.

Care

Use a moist cloth and clean the appliance after use. Store the appliance in a frost free area. The device can be suspended into the KÄRCHER organiser for storage.

Troubleshooting

Pressure washer does not build up pressure or is pulsating.

- Dismantle the high-pressure nozzles, check the high-pressure nozzles for damage, rinse the T-Racer with clean water then reinstall the high-pressure nozzles.

You need to use the matching high pressure nozzles to ensure that your high pressure cleaner works properly.

- Select and install the high-pressure nozzles in accordance with the pressure washer used.

No detergent infeed

- Check the settings at the dosage regulator for detergent.
- Check whether the Plug 'n' Clean detergent bottle is placed into the detergent connection facing down.

General information



Please read and comply with these original instructions prior to the initial operation of your appliance and store them for later use or subsequent owners.

Proper use

The T-Racer can be used with all Kärcher Home & Garden pressure washers of the categories K4 to K7.

For units constructed in 1991 and earlier you need an additional adapter (order no.: 2.642-893.0).

The T-Racer is ideally suited for the cleaning of floor and wall surfaces made of different materials, such as wood, plastic, concrete, tiles, and natural stone, as well as for cleaning Japanese gardens and pebbled surfaces. Use the T-Racer exclusively in your private household.

Symbols



△DANGER

Do not reach under the edge of the T-Racer during operation!



HARD

For sturdy surfaces (e.g. tiles, concrete, stone).



SOFT

For sensitive surfaces (e.g. wood).

Environmental protection



The packaging material can be recycled. Please do not place the packaging into the ordinary refuse for disposal, but arrange for the proper recycling.



Old appliances contain valuable materials that can be recycled. Please arrange for the proper recycling of old appliances. Please dispose your old appliances using appropriate collection systems.



Work with detergents must only be performed on liquid-tight work surfaces with connections to the wastewater runoff. Do not let release detergent into waters or earth.

Notes about the ingredients (REACH)

You will find current information about the ingredients at:

www.kaercher.com/REACH

Warranty

The warranty terms published by the relevant sales company are applicable in each country. We will repair potential failures of your appliance within the warranty period free of charge, provided that such failure is caused by faulty material or defects in manufacturing. In the event of a warranty claim please contact your dealer or the nearest authorized Customer Service centre. Please submit the proof of purchase.

Spare parts

Use only original KÄRCHER spare parts. You will find a list of spare parts at the end of these operating instructions.

Safety instructions

- *Please observe the safety instructions of your high-pressure cleaner.*
- *Only trigger the high-pressure jet at the high-pressure gun if the T-Racer is located on the surface to be cleaned.*
- *There must be no persons in the immediate vicinity of the cleaning head.*
- *Beware of the recoil! Make sure that you have a firm footing and hold the high-pressure gun with the extension tube or handle firmly.*
- *Upon completion of the cleaning operation, switch off the high-pressure cleaner. When working on the T-Racer, disconnect it from the high-pressure gun as well.*
- *Maximum water temperature 60°C (please observe the instructions for your high-pressure cleaner).*
- *This appliance was designed to be used with detergents which are supplied or recommended by the manufacturer. The use of other detergents or chemicals may compromise the safety of the appliance.*
- *Do not spray flammable liquids.*

- **Never draw in fluids containing solvents or undiluted acids and solvents! This includes petrol, paint thinner and heating oil. The spray mist is highly inflammable, explosive and poisonous. Do not use acetone, undiluted acids and solvents, as they corrode the materials used on the appliance.**

Description of the Appliance

When unpacking the product, make sure that no accessories are missing and that none of the package contents have been damaged. If you detect any transport damages please contact your dealer.

→ Illustration **A**

- 1 Casing
- 2 Handle
- 3 Twist grip Power (for adjustment of the cleaning pressure)
- 4 Foot pedal for edge cleaning
- 5 Foot pedal for surface cleaning
- 6 Bayonet connection with union nut
- 7 Extension tube
- 8 Extension tube detergent
- 9 Dosage regulator for detergent
- 10 Retainer Plug 'n' Clean detergent bottle
- 11 Rotor arm
- 12 Green high-pressure nozzle
- 13 Yellow high pressure nozzles (2 pieces)
- 14 Grey high-pressure nozzles (2 pieces)
- 15 Safety clip
- 16 Protective grid

Preparing the Appliance

Selecting the high pressure nozzles

You need to use the matching high pressure nozzles to ensure that your high pressure cleaner works properly.

Note

Nominal pressure (p): See operating instructions or type plate of your pressure washer.

High-pressure cleaner with nominal pressure (p) of 13 MPa (130 bar) to 16 MPa (160 bar)

e.g.: K 6 – K 7, Kärcher 600 – Kärcher 770

→ Use yellow high-pressure nozzles.

Note

The yellow high-pressure nozzles have already been installed.

High-pressure cleaner with nominal voltage (p) lesser than 13 MPa (130 bar)

e.g.: K 4 – K 5, Kärcher 201 – Kärcher 560

→ Use grey high-pressure nozzles.

Changing the high pressure nozzles

→ Illustration **B**

- 1 Loosen the safety clamp with a screwdriver.
- 2 Remove the protective grid.
- 3 Remove the clip.
- 4 Pull out the yellow high-pressure nozzle.
- 5 Insert the grey high-pressure nozzle.
- 6 Reinsert the clip.
- 7 Mount the protective grid on the pin.
- 8 Push the safety clamp in until it locks.

Application

Note

Always use Kärcher water filter (order no. 4.730-059.0) during suction operations of the high-pressure cleaner.

Cleaning floor surfaces

■ Apply detergent solution

Fasten the T-Racer with the extension tube detergent and the extension tube to the high-pressure gun.

→ Illustration **C**

- 1 Press the extension tube detergent onto the bayonet connection of the T-Racer.
- 2 Turn it by 90° until it locks into place.
- 3 Tighten the union nut.

Repeat this process even for the other joints.

Insert the detergent supply hose into the T-Racer.

→ Illustration **D**

→ Adjust the twist grip "Power" in accordance with the surface to be cleaned.

→ Remove the lid from the Plug 'n' Clean detergent bottle and press the detergent bottle into the detergent connection with the opening facing down.

→ Adjust the suction volume of the detergent solution by means of the dosage regulator for detergents.

→ Unlock the lever on the trigger gun.

→ Pull on the lever of the trigger gun; the device will switch on.

■ Cleaning floor surfaces

Set the dosing regulator for detergent to minimum and clean the floor area again.

Tips for cleaning


- *Outdoor surfaces should be swept before the T-Racer is used to avoid damaging the high-pressure nozzles.*
- *Prior to use on sensitive surfaces (e.g. wooden surfaces), test the product on an imperceptible spot, in order to promptly detect any changes in the surface.*
- *The T-Racer is not suited for scouring or scrubbing!*
- *Guide the T-Racer over the surface without effort.*
- *Do not remain at one spot; always keep moving during cleaning.*

△ CAUTION

Do not run over protruding corners!

→ Illustration **D**

Working with detergent

The most commonly used KÄRCHER detergents can be purchased ready to use in their Plug 'n' Clean detergent bottles with locking lids. This will make the pesky refilling and filling processes redundant.
Illustration 

- Remove the lid from the Plug 'n' Clean detergent bottle and press the detergent bottle into the detergent connection with the opening facing down.
- Adjust the suction volume of the detergent solution by means of the dosage regulator for detergents.

Note

- Bring the bottleneck into an upright position to completely empty the detergent bottle.
- Turn the detergent bottle around after cleaning, close it and place it in the retainer for the Plug 'n' Clean detergent bottle.
- Clean gravel surfaces without detergent.
- Do not adjust the detergent supply via the dosing regulator for detergents while under pressure.


Cleaning wall surfaces

Fasten the T-Racer directly to the high-pressure gun.

- 1 Press the bayonet connection of the T-Racer into the connection of the high-pressure gun, then turn by 90° until it locks into place.
- 2 Tighten the union nut.
→ Adjust the twist grip "Power" in accordance with the surface to be cleaned.

⚠ CAUTION


Always hold the T-Racer at the handle while cleaning the walls.

- Illustration 

Control elements

"Power" turning handle

The turning handle "power" is used to change the distance of the high-pressure nozzles to the surface to be cleaned.

- Illustration 

Sturdy surfaces (e.g. tiles, concrete, stone)

- Set turning handle "power" to "HARD".
For the effective cleaning of hard-to-remove contamination.

Sensitive surfaces (e.g. wood)

- Set turning handle "power" to "SOFT".
For the gentle cleaning of sensitive surfaces.

Foot pedal for surface cleaning

- Illustration 

For normal surface cleaning, operate the foot switch for surface cleaning (a).
A water stream will be emitted from the two high-pressure nozzles in the rotor arm.

Foot pedal for edge cleaning

- Illustration 

For edge and corner cleaning, operate the foot switch for edge cleaning (b).
A water stream will be emitted from green high-pressure nozzle.

Note

For edge and corner cleaning no detergent is added. In order to achieve the optimum cleaning result, guide the T-Racer along the corners.

Dosage regulator for detergent

- Illustration 

The detergent supply is adjusted by means of the dosing regulator for detergent.

Tip

You can use the extension pipe with any Kärcher accessory.

Care

Use a moist cloth and clean the appliance after use. Store the appliance in a frost free area. The device can be suspended into the KÄRCHER organiser for storage.

Troubleshooting

Pressure washer does not build up pressure or is pulsating.

- Dismantle the high-pressure nozzles, check the high-pressure nozzles for damage, rinse the T-Racer with clean water then reinstall the high-pressure nozzles.

You need to use the matching high pressure nozzles to ensure that your high pressure cleaner works properly.

- Select and install the high-pressure nozzles in accordance with the pressure washer used.

No detergent infeed

- Check the settings at the dosage regulator for detergent.
- Check whether the Plug 'n' Clean detergent bottle is placed into the detergent connection facing down.

