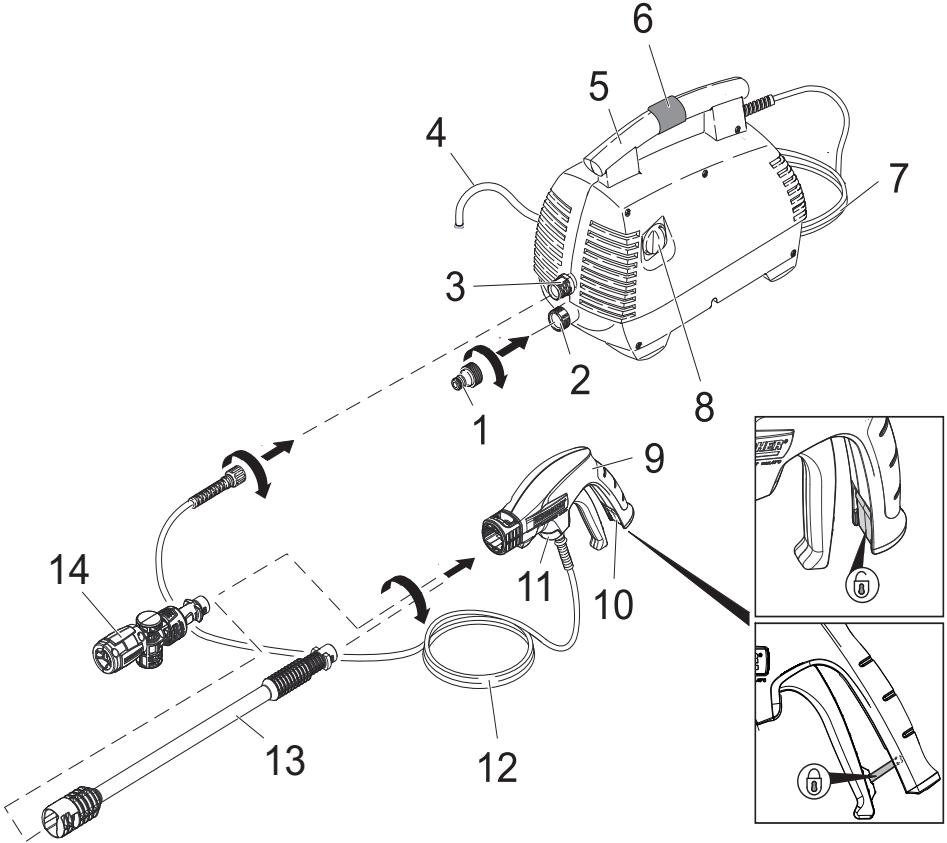
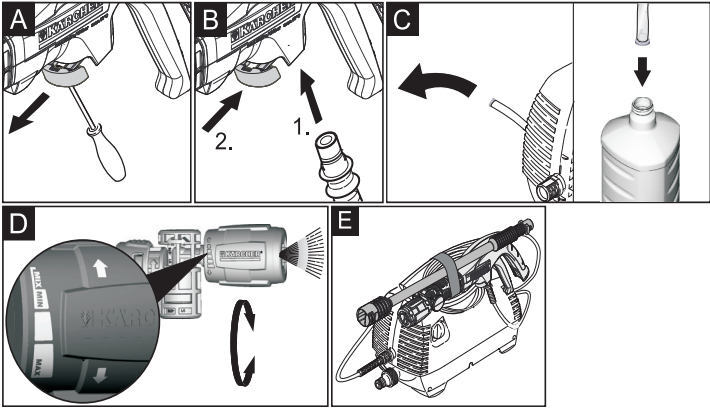


English	3
Español	13
中文	24
Indonesia	32

Register and win!
www.kaercher.com/register-and-win





Contents

General information	EN	3
Safety	EN	4
Operation	EN	7
Transport	EN	10
Storage.	EN	11
Maintenance and care	EN	11
Troubleshooting	EN	11
Technical specifications	EN	12

General information

Dear Customer,



Please read and comply with these original instructions prior to the initial operation of your appliance and store them for later use or subsequent owners.

Scope of delivery

The scope of delivery of your appliance is illustrated on the packaging. Check the contents of the appliance for completeness when unpacking.

In the event of missing accessories or any transport damage, please contact your dealer.

Proper use

This high pressure cleaner is designed for domestic use only.

- for cleaning the external units of air conditioning systems.
- for cleaning machines, vehicles, buildings, tools, facades, terraces, gardening tools, etc. by means of a high-pressure water jet (if necessary, with additional cleaning agents).
- with accessories, replacement parts and cleaning agents approved by KÄRCHER. Please observe the information accompanying the cleaning agents.
- for cleaning non-live components.

Environmental protection



The packaging material can be recycled. Please do not place the packaging into the ordinary refuse for disposal, but arrange for the proper recycling.



Old appliances contain valuable materials that can be recycled.

■ Please arrange for the proper recycling of old appliances. Please dispose your old appliances using appropriate collection systems.



Work with detergents must only be performed on liquid-tight work surfaces with connections to the wastewater runoff. Do not let release detergent into waters or earth.



Cleaning operations which produce oily waste water, e.g. engine washes, underbody washes, may only be carried out using washing stations equipped with an oil separator.

Notes about the ingredients (REACH)

You will find current information about the ingredients at:

www.kaercher.com/REACH

Warranty

The warranty terms published by the relevant sales company are applicable in each country. We will repair potential failures of your appliance within the warranty period free of charge, provided that such failure is caused by faulty material or defects in manufacturing. In the event of a warranty claim please contact your dealer or the nearest authorized Customer Service centre. Please submit the proof of purchase. (See address on the reverse)

Safety

Meaning of the notes

△ Danger

Immediate danger that can cause severe injury or even death.

△ Warning

Possible hazardous situation that could lead to severe injury or even death.

△ Caution

Possible hazardous situation that could lead to mild injury to persons or damage to property.

Caution

Pointer to a possibly dangerous situation, which can lead to property damage.

Symbols on the machine



The high pressure jet may not be directed at persons, animals, live electrical equipment or at the appliance itself. Protect the appliance against frost.

Personal protective equipment

Wear protective clothing and safety goggles to protect against splash back containing water or dirt.

Safe handling

△ Warning

■ *The appliance must not be operated by children or persons who have not been instructed accordingly.*

- *The appliance may be used by individuals with limited physical, sensory or cognitive abilities or lack of experience and knowledge if they are under supervision or were instructed regarding the safe use of the appliance and understand the resulting risks.*
- *Children must not play with this appliance.*
- *Supervise children to prevent them from playing with the appliance.*
- *The user must use the appliance as intended. The person must consider the local conditions and must pay attention to other persons in the vicinity when working with the appliance.*
- *High-pressure hoses, fixtures and couplings are important for the safety of the appliance. Only use high-pressure hoses, fixtures and couplings recommended by the manufacturer.*
- *Do not use the appliance when there are other persons around unless they are also wearing protective clothing.*
- △ **Caution**
 - *In case of extended breaks, switch the appliance off at the main switch / appliance switch or pull the mains plug.*
 - *Reduce the pressure at the nozzle or keep a distance of at least 30 cm to sensitive surfaces and areas such as*

bearings, sealings or electrical components.

- Never leave the appliance unattended as long as it is in operation.
- Do not operate the appliance at temperatures below 0 °C.

Electric components

△ Risk of electric shock

- Never touch the mains plug and the socket with wet hands.
- Check the power cord with mains plug for damage prior to every use. Immediately have damaged power cord replaced by an authorised customer service / electrician. Do not operate an appliance if the power cord is damaged.
- All current-conducting parts in the working area must be protected against jet water.
- Make sure that the power cord or extension cable is not damaged by running over, pinching, dragging or the like. Protect the power cords from heat, oil, and sharp edges.
- The mains plug and the coupling of an extension cable must be watertight and must never lie in water. Moreover, the coupling may never lie on the ground. The use of cable reels that ensure that the sockets are at least 60 mm above the ground is recommended.

- This appliance was designed to be used with detergents which are supplied or recommended by the manufacturer. The use of other detergents or chemicals may compromise the safety of the appliance.

△ Risk of damage caused by electricity

- Unsuitable electrical extension cables can be hazardous. Only use electrical extension cables outdoors which have been approved and labelled for this purpose and have an adequate cable cross-section: 1 - 10 m: 1.5 mm²; 10 - 30 m: 2.5 mm².
- Always fully unreel the extension cable from the cable drum.
- The appliance may only be connected to an electric supply that has been installed by an electrician in accordance with IEC 60364.
- The appliance may only be connected to alternating current. The voltage must correspond with the type plate of the appliance.
- For safety reasons, we recommend that you operate the appliance only via a residual current device (max. 30 mA).

Other risks

△ Risk of explosion

- *Do not spray flammable liquids.*
- *Never draw in fluids containing solvents or undiluted acids and solvents! This includes petrol, paint thinner and heating oil. The spray mist is highly inflammable, explosive and poisonous. Do not use acetone, undiluted acids and solvents, as they corrode the materials used on the appliance.*
- *The appliance may not be operated in explosive atmospheres.*
- *If the appliance is used in hazardous areas (e.g. filling stations) the corresponding safety regulations must be observed.*

△ Risk of suffocation

- *Keep packaging films away from children, there is a risk of suffocation!*

△ Risk of injury

- *Check important components, such as high-pressure hose, hand spray gun and safety installations, for damage prior to every operation. Immediately replace damaged components. Do not operate appliance with damaged components.*
- *The high-pressure jet must not be directed at other per-*

sons or the user him-/herself to clean clothing or footwear.

- *Never use the appliance to clean objects containing hazardous substances (e.g. asbestos).*
- *Vehicle tyres/tyre valves are susceptible to damage from the high-pressure jet and may burst. The first indication for this is a discolouration of the tyre. Damaged vehicle tyres/tyre valves are perilous. Keep a minimum jet distance of 30 cm during cleaning!*

Safety installations

△ Caution

Safety installations serve the protection of the user and may not be modified or bypassed.

Appliance switch

The appliance switch prevents unintentional operation of the appliance.

Lock trigger gun

This lock locks the lever of the trigger gun and prevents the inadvertent start of the appliance.

Overflow valve with pressure switch

The overflow valve prevents the permissible working pressure from being exceeded.

If the lever on the trigger gun is released the pressure switch turns off the pump, the high pressure jet is stopped. If the lever is pulled the pump is turned on again.

Stability

⚠ **Caution**

Create stability for the appliance prior to any work on or with the appliance to prevent accidents or damage.

The stability of the appliance is warranted when it is placed onto an even surface.

Choose a safe place to stand, assume a secure body stance to avoid being thrown off-balance by the recoil pressure of the jet pistol.

Operation

Description of the Appliance

Illustrations on Page 2

- 1 Coupling element for water connection
- 2 Connection for water supply with filter
- 3 High pressure connection
- 4 Detergent suction hose (with sieve)
- 5 Carrying handle
- 6 VELCRO® fastener
- 7 Mains cable with mains plug
- 8 Appliance switch "0/OFF"/ „I/ON“
- 9 Trigger gun
- 10 Lock trigger gun
- 11 Clamp for high pressure hose
- 12 High pressure hose
- 13 Spray lance extension
- 14 Angle-adjustable spray lance with pressure control (Vario Power)

Special accessories

Special accessories expand the possibilities of using your appliance. Please contact your KÄRCHER dealer for further information.

Recommended optional accessories:

- Spray lance with high pressure nozzle

- Pipe cleaning kit
- Foam nozzle with detergent container

Note: Special accessories can only be attached to the spray lance extension.

Before Startup

Mount loose parts delivered with appliance prior to start-up.

Illustrations on Page 2

Illustration **A**

- Pull out the clamp for the high-pressure hose from the trigger gun (e.g. with a small screwdriver).

Illustration **B**

- Connect high pressure hose to trigger gun.
Push the clamp in until it locks.
Check the secure connection by pulling on the high-pressure hose.

Water supply

Note: According to applicable regulations, the appliance must never be used on the drinking water net without a system separator. A suitable system separator by KÄRCHER or alternatively a system separator according to EN 12729 type BA must be used. Water that was flowing through a system separator is considered non-drinkable.



Caution

Always connect the system separator to the water supply, never directly to the appliance!

Caution

Impurities in the water can damage the high-pressure pump and the accessories. For protection, the use of the KÄRCHER water filter (optional accessory, order no. 4.730-059) is recommended.

Water supply from mains

Observe regulations of water supplier. For connection values, see type plate/technical data.

- Use a fibre-reinforced water hose (not included) with a standard coupling. (Minimum diameter 1/2 inch (13 mm), minimum length 7.5 m).
- Screw the coupling element to the water connection on the appliance.
- Push the water supply hose onto the coupling unit, then connect it to the water supply.

Start up

Caution

Dry running of more than 2 minutes leads to damage of the high-pressure pump. If the appliance does not build up pressure within 2 minutes, switch the appliance off and proceed in accordance with the instructions in Chapter "Troubleshooting".

- Screw the coupling element to the water connection on the appliance.
- Push the water supply hose onto the coupling unit, then connect it to the water supply.
- Connect the high pressure hose to the high pressure connection of the appliance.
- Attach the spray lance/ extension to the hand spray gun and secure it by a 90° rotation.
- Completely open the water tap.
- Insert the mains plug into the socket.
- Turn on the appliance "I/ON".

Operation

Note: When cleaning air conditioning units, observe the manufacturer's information.

⚠ **Danger**

The water jet that is emitted from the high-pressure nozzle results in a repulsion power acting on the hand spray gun. Make sure that you have a firm footing and are also holding the hand spray gun and spray lance/ extension firmly.

High-pressure jets can be dangerous if improperly used. The jet may not be directed at persons, animals, live electrical equipment or at the appliance itself.

- Unlock the lever on the trigger gun.
- Pull on the lever of the trigger gun; the device will switch on.

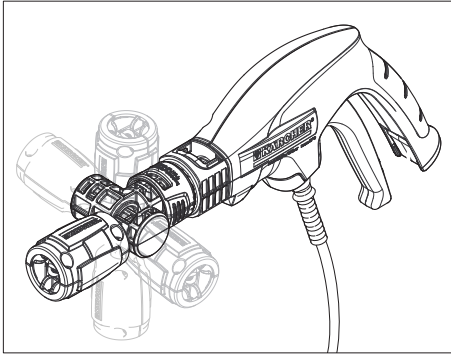
Note: Release the lever of the trigger gun; the device will switch off again. High pressure remains in the system.

Angle-adjustable spray lance with pressure control (Vario Power)

Illustration

The working pressure is continuously adjustable between "Min" and "Max". The spray lance head can be swivelled up and down by 90° respectively and rotated by 360°.

- Release the lever on the trigger gun.
- Turn the spray lance head in the required angular position.



Note: The adjustability of the spray lance head ensures easier access to hard-to-reach places.

Note: Suitable for use with detergents.

Recommended cleaning method

➔ Spray the detergent sparingly on the dry surface and allow it to react, but not to dry.

Note: Reaction time 2-5 minutes.

➔ Pre-clean the sensitive fins of the air conditioner with the Vario Power Jet. Adjust pressure setting and orientation of Vario Power Lance.

➔ Pre-clean the whole unit with high pressure jet.

➔ Dry the air conditioner or rub down if necessary with a cloth.

Pressure settings

Caution

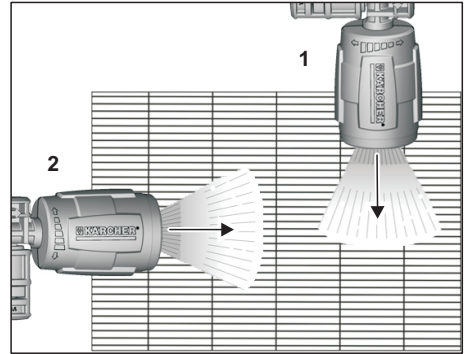
A careful treatment of the sensitive fins is essential to maintain their function.

Adjustment of the pressure depends on personal estimation and cleaning direction.

- Min - low pressure (20 bar). For small air conditioner units with sensitive fins and light soiling.
- Middle pressure (approximate 50 bar). For small to middle air conditioner units with more robust fins.

- Maximum - high pressure (100 bar). For surfaces with heavy soiling and with robust fins.

Note: Cleaning direction of the high pressure jet:



1 Min - low pressure (20-50 bar).

Cleaning against the direction of the fins.

2 Min - Max high pressure (20-100 bar).

Cleaning with the direction of the fins.

Note: Optimum detergent application is only guaranteed with the accessories included in the scope of supply.

Working with detergent

⚠ Danger

The use of wrong detergents or chemicals can compromise the safety of the appliance. Please use exclusively KÄRCHER detergents and care products to carry out the respective cleaning task, as these were specifically developed for your appliance. The use of other detergents and care products may lead to premature wear and can invalidate your warranty claims. Please obtain information at your local dealer or request information directly from KÄRCHER.

⚠ Danger

The improper use of detergents can cause severe injuries or toxication.

When using detergents, the material data safety sheet issued by the detergent manufacturer must be adhered to, especially the instructions regarding personal protective equipment.

Illustration 

- Pull detergent suction hose as far as is required out of the housing.
- Suspend end of detergent suction hose in a container filled with detergent.
- Use spray lance with pressure regulation (Vario Power).

Illustration 

- Turn the spray lance to "Mix" position.

Note: This will mix the detergent with the water stream.

Interrupting operation

- Release the lever on the trigger gun.
- Lock the lever on the trigger gun.
- During longer breaks (more than 5 minutes), also turn the appliance off using the "0/OFF" switch.

Finish operation

Caution

Only separate the high-pressure hose from the hand spray gun or the appliance when there is no pressure in the system.

- After working with detergent, suspend detergent suction hose in a container filled with clear water, switch the appliance on for around 1 minute once the spray lance has

been removed and rinse until water runs clear.

- Release the lever on the trigger gun.
- Turn off the appliance "0/OFF".
- Turn off tap.
- Press the lever on the trigger gun to release any remaining pressure in the system.
- Detach the appliance from the water supply.
- Lock the lever on the trigger gun.
- Pull out the mains plug.

Illustration 

- Stow the power cord, high-pressure hose and accessories on the appliance by means of a VELCRO® fastener.

Note: Check the air conditioning unit for damage prior to recommissioning.

Transport

Caution

In order to prevent accidents or injuries, keep in mind the weight of the appliance during transport (see Specifications).

When transporting by hand

- Lift appliance by the carrying handle and carry it.

When transporting in vehicles

- Secure the appliance against shifting and tipping over.

Storage

Caution

In order to prevent accidents or injuries, mind the weight of the appliance when choosing the storage location (see technical data).

Storing the Appliance

Prior to extended storage periods, as during the winter, also observe the instructions in the Care section.

- Park the machine on an even surface.
- Stow away the mains cable, the high-pressure hose and accessory on the appliance.

Frost protection

Caution

Appliances and accessories that are not completely drained can be destroyed by frost. Completely drain appliance and accessories and protect them against frost.

To avoid damage:

- Completely drain all water from the appliance: Switch the appliance on with detached high pressure hose and detached water supply (max. 1 minute) and wait, until no more water exits at the high pressure connection. Turn off the appliance.
- Store the appliance and the entire accessories in a frost free room.

Maintenance and care

⚠ Danger

Risk of electric shock. Turn off the appliance and remove the mains plug prior to performing any care and maintenance work.

Care

Prior to longer periods of storage, e.g. in the winter:

- Remove filter from suction hose for detergent and clean under running water.
- Pull out the sieve in the water connection using flat-nose pliers and clean under running water.

Maintenance

The appliance is maintenance free.

Spare parts

Use only original KÄRCHER spare parts. You will find a list of spare parts at the end of these operating instructions.

Troubleshooting

You can rectify minor faults yourself with the help of the following overview. If in doubt, please consult the authorized customer service.

⚠ Danger

Repair work and work on the electrical components may only be performed by an authorised customer service.

Appliance is not running

- Pull on the lever of the trigger gun; the device will switch on.
- Check whether the voltage indicated on the type plate corresponds to the voltage of the mains supply.
- Check the mains connection cable for damages.

Pressure does not build up in the appliance

- Appliance ventilation: Switch the appliance on with the high-pressure hose detached and operate (max. 2 minutes) until the water exits the high-pressure connection without bubbles. Switch off appliance and reconnect high-pressure hose.
- Check water supply for adequate delivery rate.
- Pull out the sieve in the water connection using flat-nose pliers and clean under running water.

Strong pressure fluctuations

- Clean high-pressure nozzle: Remove dirt and debris from the nozzle bore, using a needle and rinse through with water from the front.
- Check water flow quantity.

Appliance is leaking

- Slight leakage from the appliance pump is normal. If the leakage increases contact the authorized customer service.

No detergent infeed

- Detach spray lance from the trigger gun. Work only with the trigger gun.
- Clean the detergent suction hose filter.
- Check the detergent suction hose for kinks.

Technical specifications

Electrical connection

Voltage	220-240 V
	50 Hz
Connected load	1,4 kW
Protection class	IP X5
Protective class	I
Mains fuse (slow-blow)	10 A

Water connection

Feed pressure	0,2-1,2 MPa
Max. feed temperature	40 °C
Min. feed volume	8 l/min

Performance data

Working pressure	7 MPa
Max. permissible pressure	10 MPa
Water flow rate	5,5 l/min
Detergent flow rate	0,4 l/min
Recoil force of trigger gun	10 N

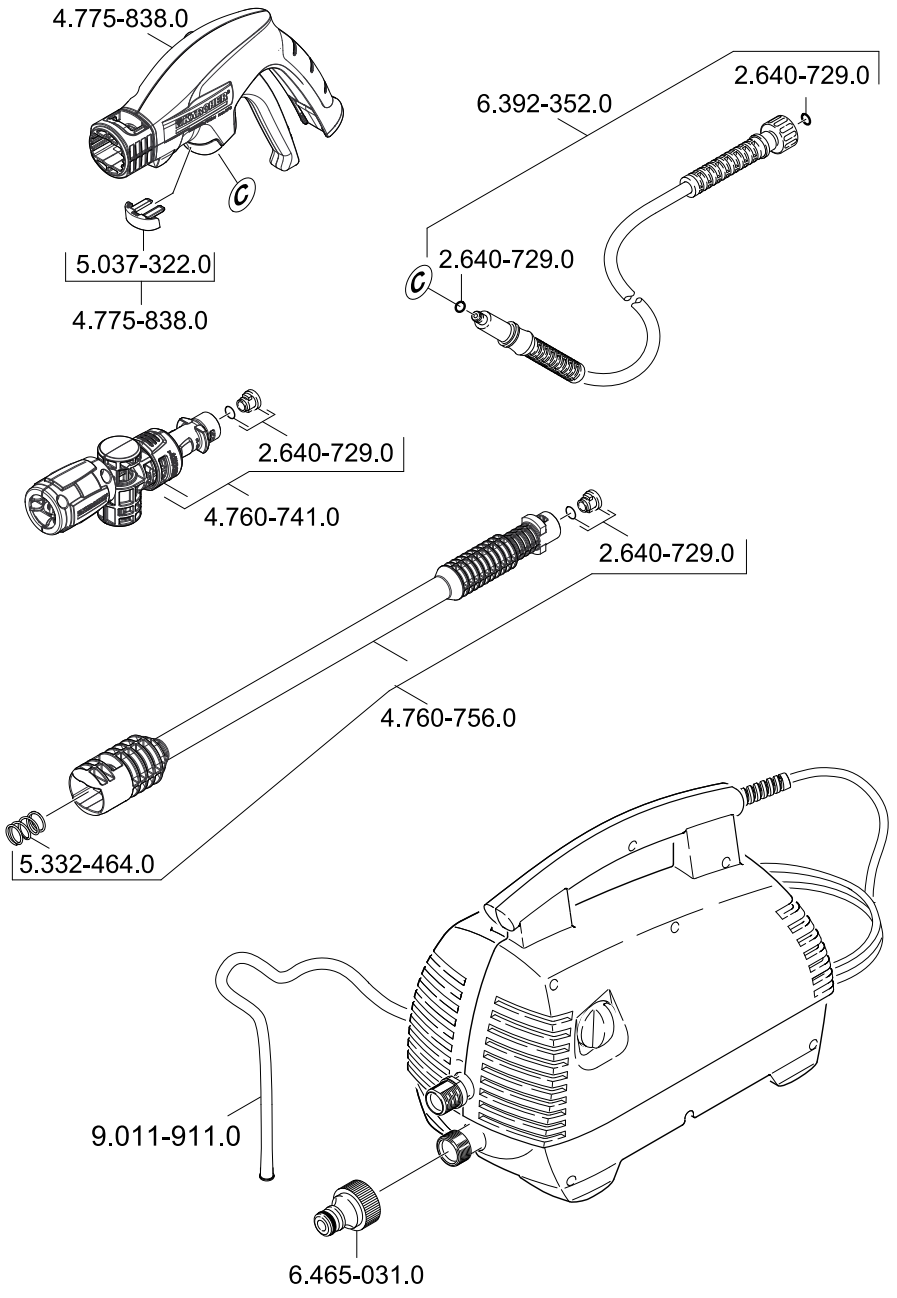
Dimensions and weights

Length	374 mm
Width	201 mm
Height	296 mm
Weight	7,9 kg

Values determined as per EN 60335-2-79

Hand-arm vibration value	<2,5	m/s ²
Uncertainty K	0,3	m/s ²
Sound pressure level L _{pA}	68	dB(A)
Uncertainty K _{pA}	3	dB(A)
Sound power level L _{WA} +	83	dB(A)
Uncertainty K _{WA}		

Subject to technical modifications!





<http://www.kaercher.com/dealersearch>



Alfred Kärcher GmbH & Co. KG
Alfred-Kärcher-Str. 28 - 40
71364 Winnenden (Germany)
Tel.: +49 7195 14-0
Fax: +49 7195 14-2212