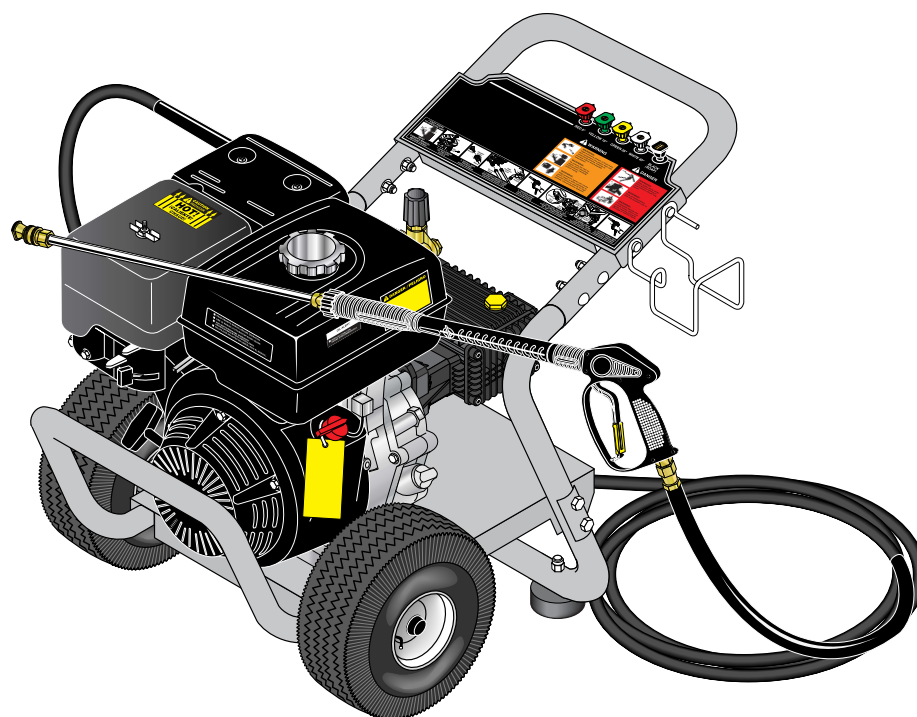




# KÄRCHER

## OPERATOR'S MANUAL



**MODEL HD 2.3/24 P - 1.575-100.0**

**MODEL HD 2.5/27 P - 1.575-101.0**

**MODEL HD 3.0/30 P - 1.575-102.0**

**MODEL HD 3.5/32 P - 1.575-103.0**

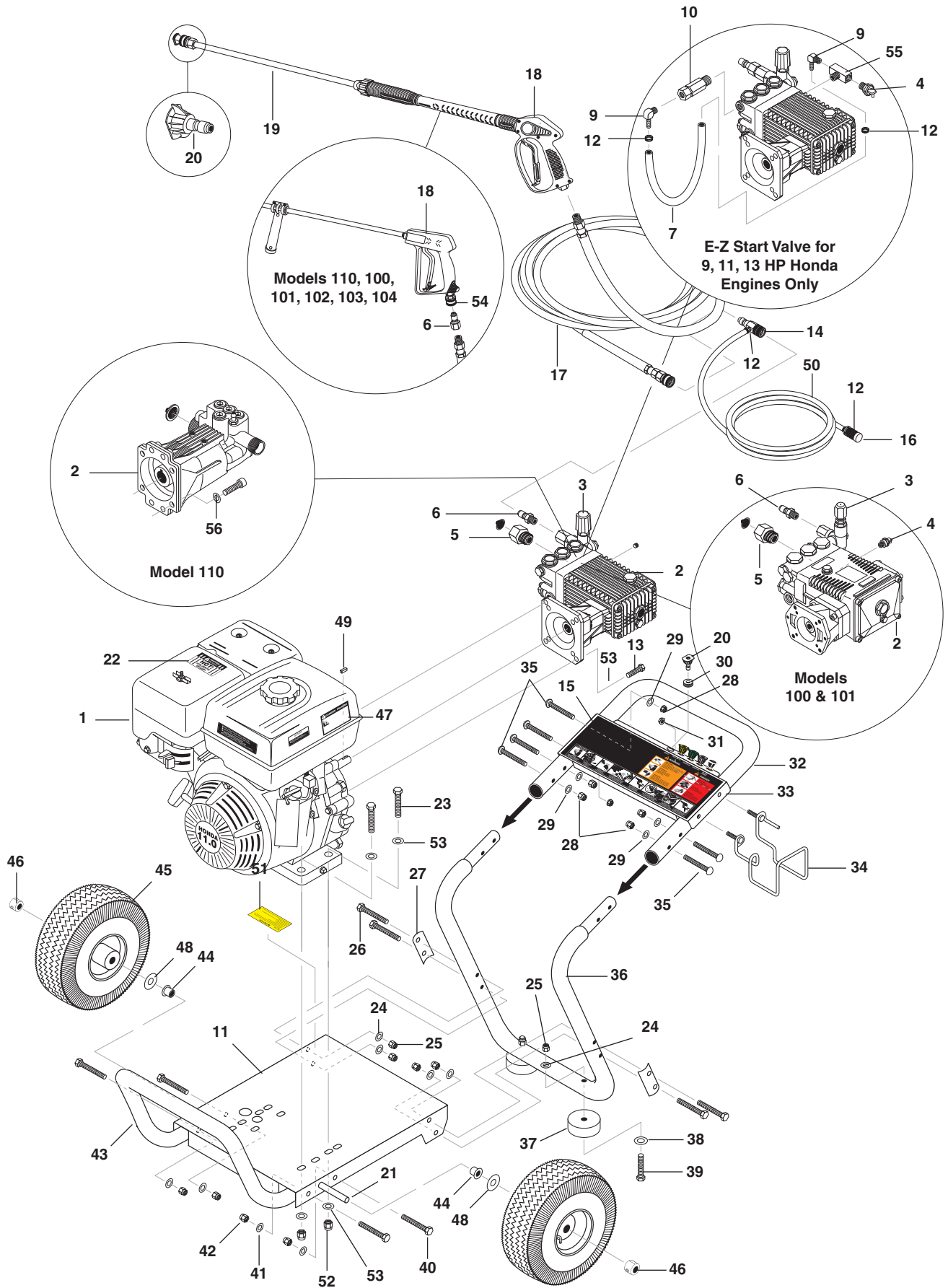
**MODEL HD 3.8/35 P - 1.575-104.0**

---

To locate your local Kärcher Commercial Pressure Washer Dealer nearest you,  
please call 1-888-805-9852 or visit [www.karchercommercial.us](http://www.karchercommercial.us)

9.800-082.0

# EXPLODED VIEW



## EXPLODED VIEW PARTS LIST

ITEM	PART NO.	DESCRIPTION	QTY
1		Engine, See Specifications Page	
2		Pump, See Specifications Page	
3		Unloader, See Specifications Page	
4	9.804-025.0	Pump Protector, 1/4" 145° (100, 101)	1
	8.707-256.0	Pump Protector, 1/2" PTP (102, 104, 103)	1
5	9.802-146.0	Swivel, 1/2" MP x 3/4" GHF (100, 101, 102, 104, 103)	1
6	9.802-171.0	Nipple, 3/8" x 3/8" NPT ST Fem (101)	1
	9.802-171.0	Nipple, 3/8" x 3/8" MPT Male (100, 102, 103, 104)	1
7	9.802-142.0	Hose, 1/4" Push-on (E-Z-Start, 9 HP, 11 HP, 13 HP Honda)	14 in
8	8.707-182.0	▲ Coupler, Twist Connect, M22-F x 3/8" FNPT (232336 and 23326)	1
9	9.802-142.0	Hose, Barb, 1/4" Barb x 1/8" MP, 90° (E-Z Start)	1 (11 HP, 13 HP Honda) 2
	8.706-958.0	Hose Barb, 1/4" Barb x 1/4" Pipe (9 HP)	1
10	9.802-190.0	Valve, E-Z Start 3/8" MPT x 1/8" FPT(9HP, 11HP, 13HP Honda)	1
11	9.803-126.0	Base, CW Direct, Black	1
12	9.802-210.0	Clamp, Hose, (E-Z Start, 9 HP, 11 HP, 13 HP Honda)	4 (5.5HP, 6HP) 2
13	9.802-711.0	Bolt, 5/16-24" x 1" NF, HH	4
	9.802-722.0	Bolt, 3/8" x 1-1/4" NC, HH (9 HP, 11 HP, 13 HP)	4
	9.802-707.0	Bolt, 5/16"-24 x 3/4"	4
14	9.802-216.0	Injector, Detergent, Assembly All Models Except (110)	1
	9.802-216.0	Injector, Chemical, Non-Adjust	1
	8.707-057.0	Strainer, Plastic, 1/4" Hose Barb	1
	9.802-251.0	Tube, 1/4" x 1/2" Clear Vinyl	6 ft.
15	9.800-723.0	Label, Instructions	1
16	9.802-160.0	Strainer, Plastic, 1/4" Hose Barb	1
17		Hose, High Pressure, See Specifications Page	
18	9.802-223.0	Spray Gun, SK2, 3/8" Inlet, Lance W/M22CPLR	1
	8.711-348.0	Spray Gun, AP 1000	1
19	9.802-220.0	Wand, 18" M22 x 1/4" QC	1
	9.802-219.0	Wand Assy, Side Grip w/1/4" Coupler	1

ITEM	PART NO.	DESCRIPTION	QTY
20		Nozzle Size, See Page 19 For Proper Size	
	4-12803000	Nozzle, 3.0 0° Red	1
	4-12803015	Nozzle, 3.0 15° Yellow	1
	4-12803025	Nozzle, 3.0 25° Green	1
	4-12803040	Nozzle, 3.0 40° White	1
	4-12803500	Nozzle, 3.5 0° Red	1
	4-12803515	Nozzle, 3.5 15° Yellow	1
	4-12803525	Nozzle, 3.5 25° Green	1
	4-12803540	Nozzle, 3.5 40° White	1
	4-12804000	Nozzle, 4.0 0° Red	1
	4-12804015	Nozzle, 4.0 15° Yellow	1
	4-12804025	Nozzle, 4.0 25° Green	1
	4-12804040	Nozzle, 4.0 40° White	1
	4-16540	Nozzle, Compl, QCEM-6540, Brass (All Models)	1
21	9.803-097.0	Axle, 5/8" x 20.125" Long	1
22	9.800-006.0	Label, HOT	1
23	9.802-713.0	Bolt, 5/16" x 1-1/2", NC HH (5 HP, 5.5 HP, 6.5 HP)	4
	9.802-727.0	Bolt, 3/8" x 1-3/4" Tap (9 HP, 11 HP, 13 HP)	4
24	9.802-807.0	Washer, 3/8" SAE, Flat	6
25	9.802-779.0	Nut, 3/8" ESNA, NC	6
26	9.802-728.0	Bolt, 3/8" x 2" NC, HH	4
27	9.803-114.0	Retainer Bracket, Handle, Black	2
28	9.802-773.0	Nut, 1/4" ESNA, NC	6
29	9.802-802.0	Washer, 1/4" Flat	6
30	9.802-064.0	Grommet, Rubber, Nozzle Holder,	5
31	9.802-778.0	Nut, 5/16" Flange, Whiz Loc	2
32	9.803-119.0	Handle, Grab, Chrome	1
33	9.803-126.0	Plate, Warning, Black	1
34	9.803-098.0	Hanger, Hose/Wand	1
35	9.802-706.0	Bolt, 1/4"-20 x 1-3/4", Carriage, Zinc	6
36	9.803-119.0	Handle, Lower Grab, Chrome	1
37	9.802-066.0	Pad, Soft Rubber	2
38	9.802-817.0	Washer, 3/8" x 1" Steel	2
39	9.802-729.0	Bolt, 3/8" x 2-1/4" HH, Grd. 5	2
40	9.802-804.0	Bolt, Carriage, 5/16" x 1-3/4"	4
41	9.802-804.0	Washer, 5/16" Flat	4
42	9.802-776.0	Nut, 5/16" ESNA, NC	4
43	9.803-123.0	Handle, Bumper, Chrome	1
44	9.802-103.0	Bushing, 5/8" Snap	2
45	9.802-270.0	Wheel & Tire Assy, 4" Steel Rim w/Tube	2
46	9.802-782.0	Collar, 5/8" Bore Shaft	2
47	9.800-008.0	Label, Cool Engine Before Filling	1
48	9.802-810.0	Washer, 5/8" Flat	2

---

## EXPLODED VIEW PARTS LIST CONT.

---

ITEM	PART NO.	DESCRIPTION	QTY
49	9.802-958.0	Key, .185 Sqr x 1.75" (5 HP, 5.5 HP, 6.5 HP)	1
50	9.802-251.0	Tube, 1/4" x 1/2" Clear Vinyl	6 ft.
51	9.800-049.0	Label, Manufacturer's Cleaning Solution	1
52	9.802-776.0	Nut, 5/16" ESNA, NC (5 HP, 5.5 HP, 6.5 HP)	4
	9.802-779.0	Nut, 3/8" ESNA, NC (9 HP, 11HP, 13 HP)	4
53	9.802-804.0	Washer, 5/16" Flat (5 HP, 5.5 HP, 6.5 HP)	8
	9.802-807.0	Washer, 3/8" Flat (9 HP, 11 HP, 13 HP)	12
54	9.802-169.0	Coupler, 3/8" Male Brass	1
55	8.706-854.0	Tee, 1/4" Branch, Male	1
56	9.802-813.0	Lock Washer	4

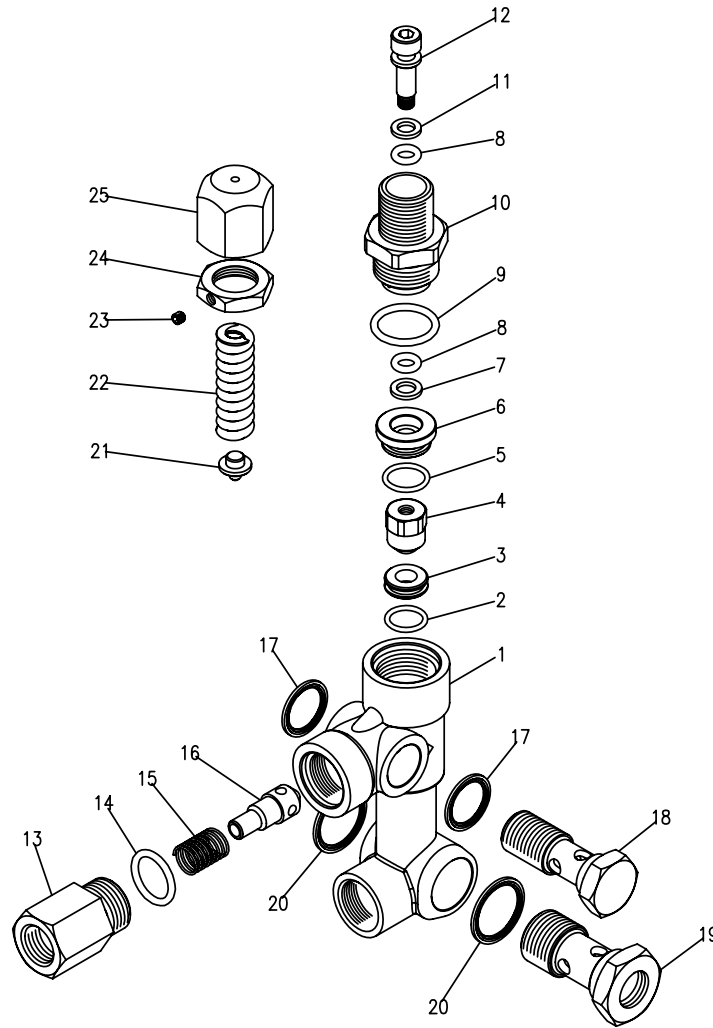
▲ Not Shown

## SPECIFICATIONS

Machine Model	Pressure (GPM)	Nozzle (PSI) Size	Hose Part #	Pump Model	Pump Part #	Unloader Part #	Engine Hp	Engine Part #
1.575-100.0	2.3	2400 3.0	8.739-125.0	KG2530G	9.803-822.0	9.803-899.0	GC160 (5.5)	9.802-316.0
1.575-101.0	2.5	2700 3.0	8.739-125.0	KG2530G	9.803-822.0	9.803-899.0	GX200 (6.5)	9.802-317.0
1.575-102.0	3.0	3000 3.5	8.739-125.0	KG3035G1	9.804-034.0	9.803-899.0	GX270 (9)	9.802-315.0
1.575-104.0	3.8	3500 4.0	8.739-203.0	KS4040G	9.802-350.0	9.803-900.0	GX390 (13)	9.802-322.0
1.575-110.0	2.3	2300 3.0	8.739-125.0	2427G	9.120-032.0	9.803-900.0	GC160	9.802-316.0
1.575-103.0	3.8	3200 4.0	8.739-203.0	KS3540G1	9.802-349.0	9.803-900.0	GX390	9.802-316.0

# VBA35 UNLOADER EXPLODED VIEW

9.803-899.0 & 9.803-900.0 Unloader, 25 lpm @ 240 BAR, Fits with KG2530 Pump

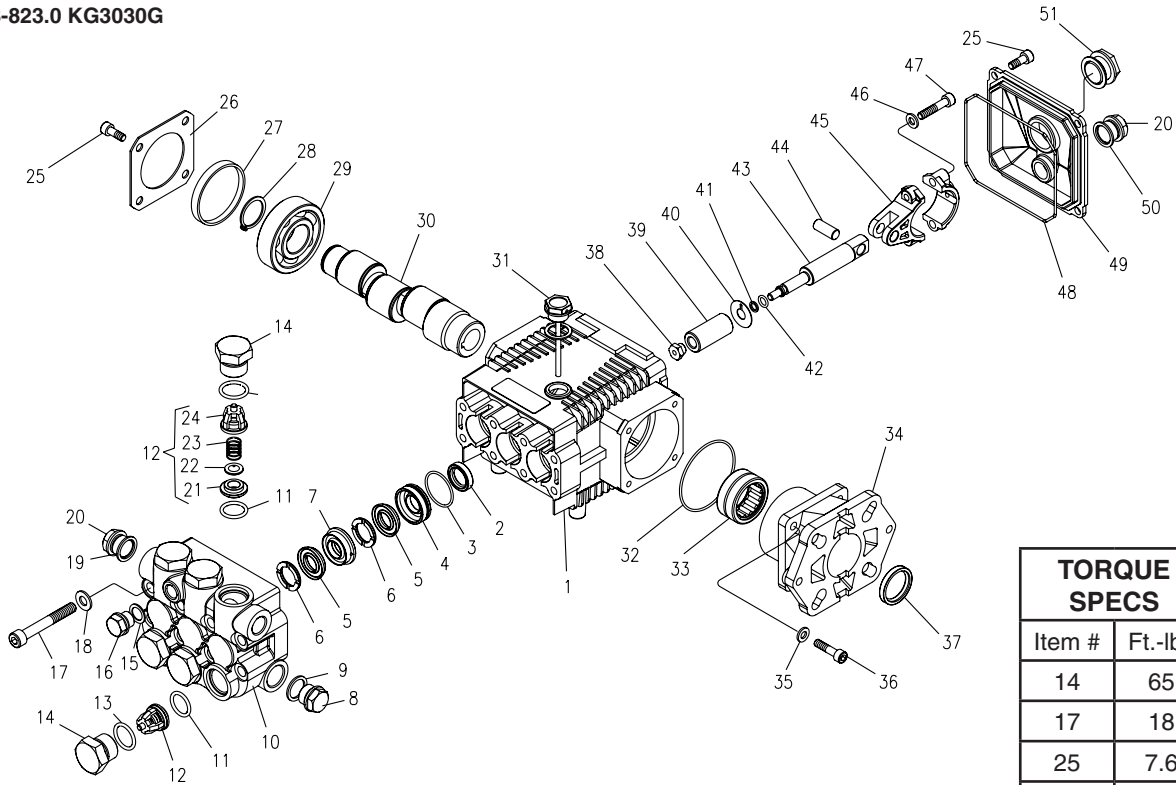


## VBA35 UNLOADER EXPLODED VIEW PARTS LIST

ITEM	PART NO.	DESCRIPTION	KIT	QTY	ITEM	PART NO.	DESCRIPTION	KIT	QTY
1	9.803-902.0	Body Valve (KG)		1	15	9.803-916.0	Spring	B	1
	9.803-901.0	Body Valve (KS)		1	16	9.803-917.0	Poppet	B	1
2	9.803-903.0	O-Ring	A, C	1	17	9.802-893.0	Seal Washer 3/8		2
3	9.803-904.0	Seat	C	1	18	9.803-920.0	Banjo Bolt, 3/8 w/ 1/8 Pilot		1
4	9.803-905.0	Ball, Sub-assy	C	1	19	9.803-915.0	Banjo Bolt 1/2		1
5	9.803-906.0	O-Ring	A	1	20	9.803-921.0	Seal Washer 1/2		2
6	9.803-907.0	Guide Bushing		1	21	9.803-922.0	Plate	C	1
7	9.803-908.0	Teflon Ring	A	1	22	9.803-923.0	Spring	C	1
8	9.803-909.0	O-Ring	A	2	23	9.803-924.0	Set Screw		1
9	9.803-910.0	O-Ring	A	1	24	9.803-925.0	Nut		1
10	9.803-911.0	Connector		1	25	9.803-926.0	Brass Handle		1
11	9.803-912.0	Teflon Ring	A	1	Kit A	9.803-927.0	O-Ring Repair Kit		
12	9.803-913.0	Stem	C	1	Kit B	9.803-928.0	Outlet Kit		
13	9.803-914.0	Connector, Female		1	Kit C	9.803-929.0	Stem Repair Kit		
14	9.803-191.0	O-Ring	A, B	1					

## KG PUMP EXPLODED VIEW

9.803-822.0 KG2530G  
9.803-823.0 KG3030G



TORQUE SPECS	
Item #	Ft.-lbs
14	65
17	18
25	7.6
36	8
38	9
47	13

## KG PUMP EXPLODED VIEW PARTS LIST

ITEM	PART NO.	DESCRIPTION	QTY	ITEM	PART NO.	DESCRIPTION	QTY
1	9.803-938.0	Crankcase	1	18	9.802-884.0	Washer	8
2*	See Kit Below	Plunger Oil Seal	3	19	9.803-198.0	Copper Washer 3/8"	1
3*	9.803-939.0	O-Ring Ø1.78 x 28.30	3	20	9.802-925.0	Brass Plug 3/8"	2
4*	8.717-310.0	Pressure Ring, 15mm	3	25	9.802-939.0	Hexagonal Screw	9
5*	See Kit Below	"V" Seal, 15mm	6	26	9.803-953.0	Bearing Cover	1
6*	9.803-942.0	Support Ring 15mm	6	27	9.803-954.0	Seal Bearing	1
7*	9.803-944.0	Intermediate Ring 15mm	3	28	9.802-914.0	Snap Ring	1
8	9.802-926.0	Brass Plug, 1/2"	1	29	9.803-955.0	Ball Bearing	1
9	9.803-199.0	Copper Washer 1/2"	1	30	8.717-069.0	Crankshaft (2530G)	1
10	9.803-946.0	Manifold Housing	1		8.717-070.0	Crankshaft (3030G)	1
11*	9.803-947.0	O-Ring Ø1.78 x 15.54	6	31	9.803-957.0	Oil Dip Stick	1
12*	See Kit Below	Valve Assembly	6	32	9.804-581.0	O-Ring 3.53 x 55.56	1
13*	9.803-948.0	O-Ring Ø2.62 x 18.77	6	33	9.804-582.0	Needle Roller Bearing	1
14	9.803-949.0	Valve Plug	6	34	8.717-212.0	Engine Flange	1
15	9.803-950.0	Washer, Copper	1	35	9.803-210.0	Spring Washer	4
16	9.803-951.0	Brass Plug G1/4	1	36	9.804-584.0	Flange Screw	4
17	9.803-952.0	Manifold Stud Bolt	8				

## KG PUMP EXPLODED VIEW

ITEM	PART NO.	DESCRIPTION	QTY
37	9.804-586.0	Crankshaft Seal	1
38*	9.803-959.0	Plunger Nut	3
39*	See Kit Below	Plunger, 15mm	3
40*	9.803-962.0	Copper Spacer	3
41*	9.803-963.0	O-Ring Ø1.78x5.28	3
42*	9.803-156.0	Teflon Ring	3
43	9.803-964.0	Plunger Rod	3
44	9.803-965.0	Connecting Rod Pin	3
45	9.803-966.0	Connecting Rod	3
46	9.803-218.0	Spring Washer	6
47	8.933-020.0	Connecting Rod Screw	6
48	9.803-969.0	O-Ring 2.62 x 107.62	1
49	9.803-968.0	Crankcase Cover	1
50	9.803-197.0	Gasket, G3/8	1
51	9.803-202.0	Sightglass G3/8	1

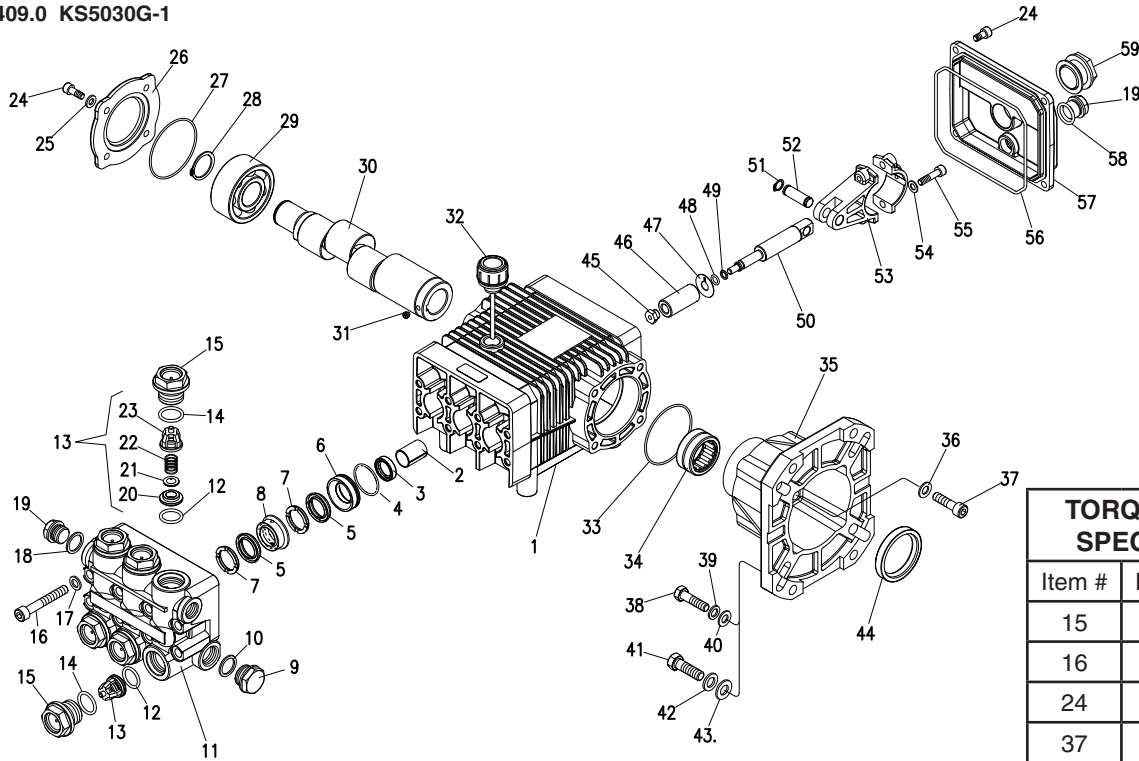
\* Part available in kit (See below)

REPAIR KIT NUMBER	9.803-930.0	9.803-932.0	9.803-934.0	9.803-936.0	9.803-937.0
KIT DESCRIPTION	Plunger Seal 15mm	Complete Seal Packing 15mm	Plunger 15mm	Complete Valve	Plunger Oil Seals
ITEM NUMBERS INCLUDED	3, 5, 6	2, 3, 4, 5, 6, 7	38, 39, 40, 41, 42	11, 12, 13	2
NUMBER OF CYLINDERS KIT WILL SERVICE	3	1	1	6	3



## KS-1 PUMP EXPLODED VIEW

9.841-643.0 KS3040G-1  
 9.802-349.0 KS3540G-1  
 9.802-350.0 KS4040G-1  
 9.803-409.0 KS5030G-1



TORQUE SPECS	
Item #	Ft.-lbs
15	75
16	30
24	7.6
37	10
45	4.5
55	13

## KS-1 PUMP EXPLODED VIEW PARTS LIST

ITEM	PART NO.	DESCRIPTION	QTY	ITEM	PART NO.	DESCRIPTION	QTY
1	8.717-129.0	Crankcase	1	18	9.803-198.0	Copper Washer 3/8"	1
2	9.803-196.0	Plunger Guide	3	19	9.802-925.0	Brass Plug 3/8"	2
3*	See Kit Below	Plunger Oil Seal	3	24	9.802-939.0	Hexagonal Screw	9
4*	9.803-189.0	O-Ring Ø1.78 x 31.47	3	25	9.803-210.0	Washer	4
5*	See Kit Below	"V" Seal , 15mm	6	26	9.803-184.0	Closed Bearing Housing	1
6*	8.717-310.0	Pressure Ring, 15mm	3	27	8.717-225.0	O-Ring Ø 1.78 x 60.05	2
7*	8.717-179.0	Support Ring 15mm	6	28	9.802-914.0	Snap Ring	1
8*	8.717-178.0	Intermed. Ring 15mm	3	29	9.803-168.0	Double Row Ball Bearing	1
9	9.802-926.0	Brass Plug, 1/2"	1	30	9.803-150.0	Crankshaft (KS3040G-1)	1
10	9.803-199.0	Copper Washer 1/2"	1		9.803-151.0	Crankshaft (KS3540G-1)	1
11	9.802-932.0	Manifold Housing	1		9.803-152.0	Crankshaft (KS4040G-1)	1
12*	9.803-191.0	O-Ring Ø2.62 x 17.13	6		9.803-153.0	Crankshaft (KS5030G-1)	1
13*	See Kit Below	Valve Assembly	6	31	9.802-945.0	Set Screw	1
14*	9.803-193.0	O-Ring Ø2.62 x 20.29	6	32	9.802-921.0	Oil Dip Stick	1
15	9.802-928.0	Valve Plug	6	33	9.804-581.0	O-Ring Ø 3.53 x 55.56	1
16	9.802-938.0	Manifold Stud Bolt	8	34	9.803-161.0	Needle Roller Bearing	1
17	9.802-884.0	Washer	8	35	9.803-183.0	Engine Flange	1