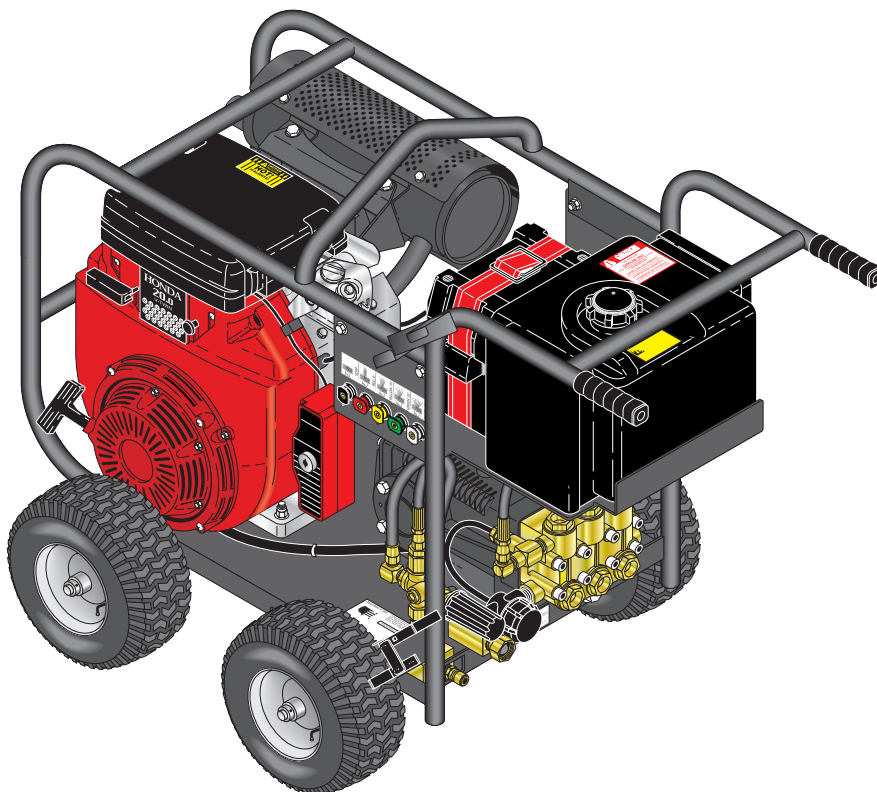




# KÄRCHER

## OPERATOR'S MANUAL

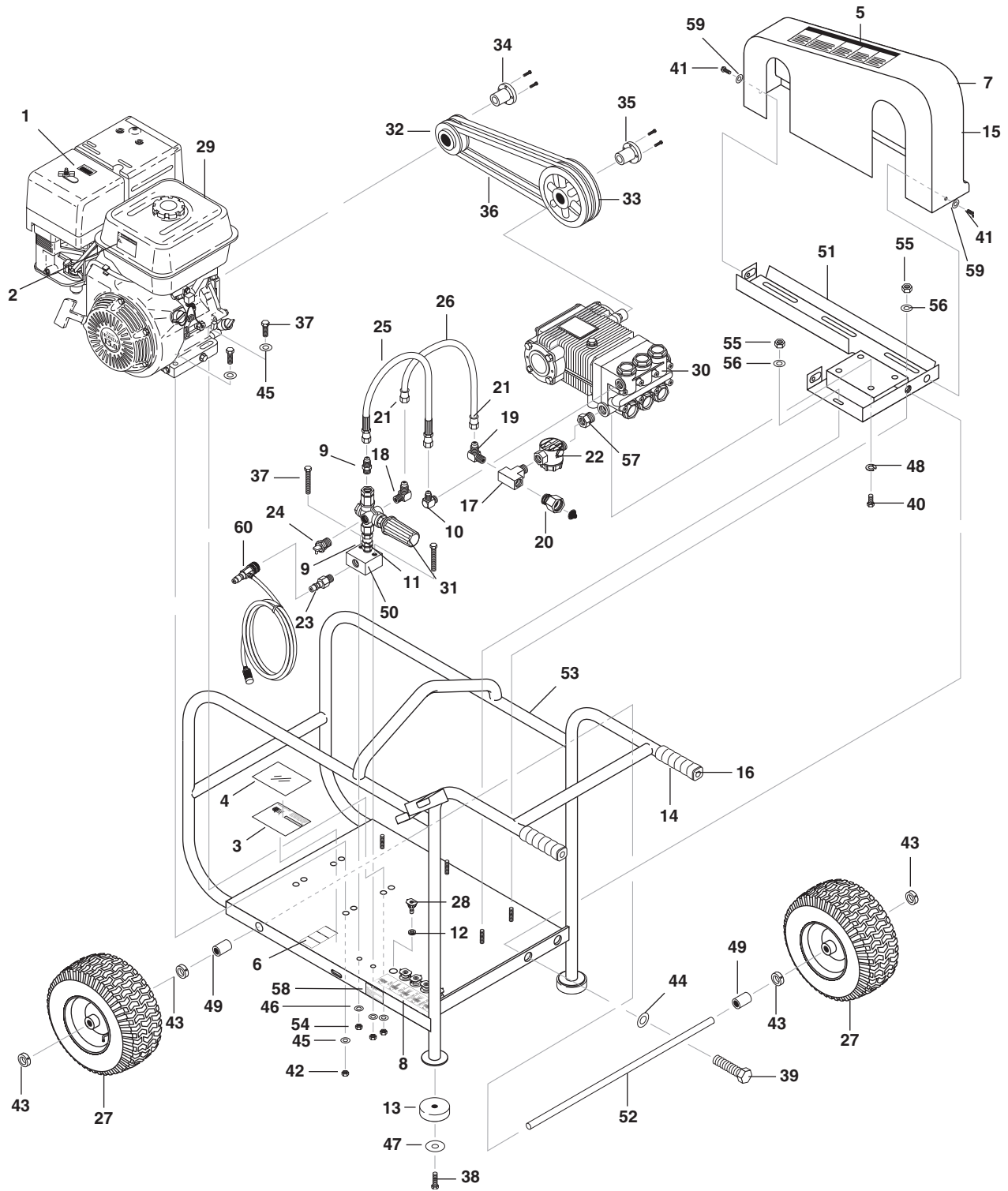


MODEL #	ORDER #	MODEL #
HD 4.0/50 Pb Cage	1.575-200.0	BR-405037 E
HD 4.5/50 Pb Cage	1.575-201.0	BR-455037E
HD 3.4/30 Db Cage	1.575-202.0	BR-343087E
HD 3.0/40 Pb Cage	1.575-203.0	BR-304037
HD 3.5/32 Pb Cage	1.575-204.0	BR-353237
HD 3.7/35 Pb Cage	1.575-205.0	BR-373537
HD 4.4/20 Pb Cage	1.575-206.0	BR-442537
HD 4.0/40 Pb Cage	1.575-207.0	BR-404027

To locate your local Kärcher Commercial Pressure Washer Dealer nearest you,  
please visit [www.karchercommercial.us](http://www.karchercommercial.us)

9.800-084.0

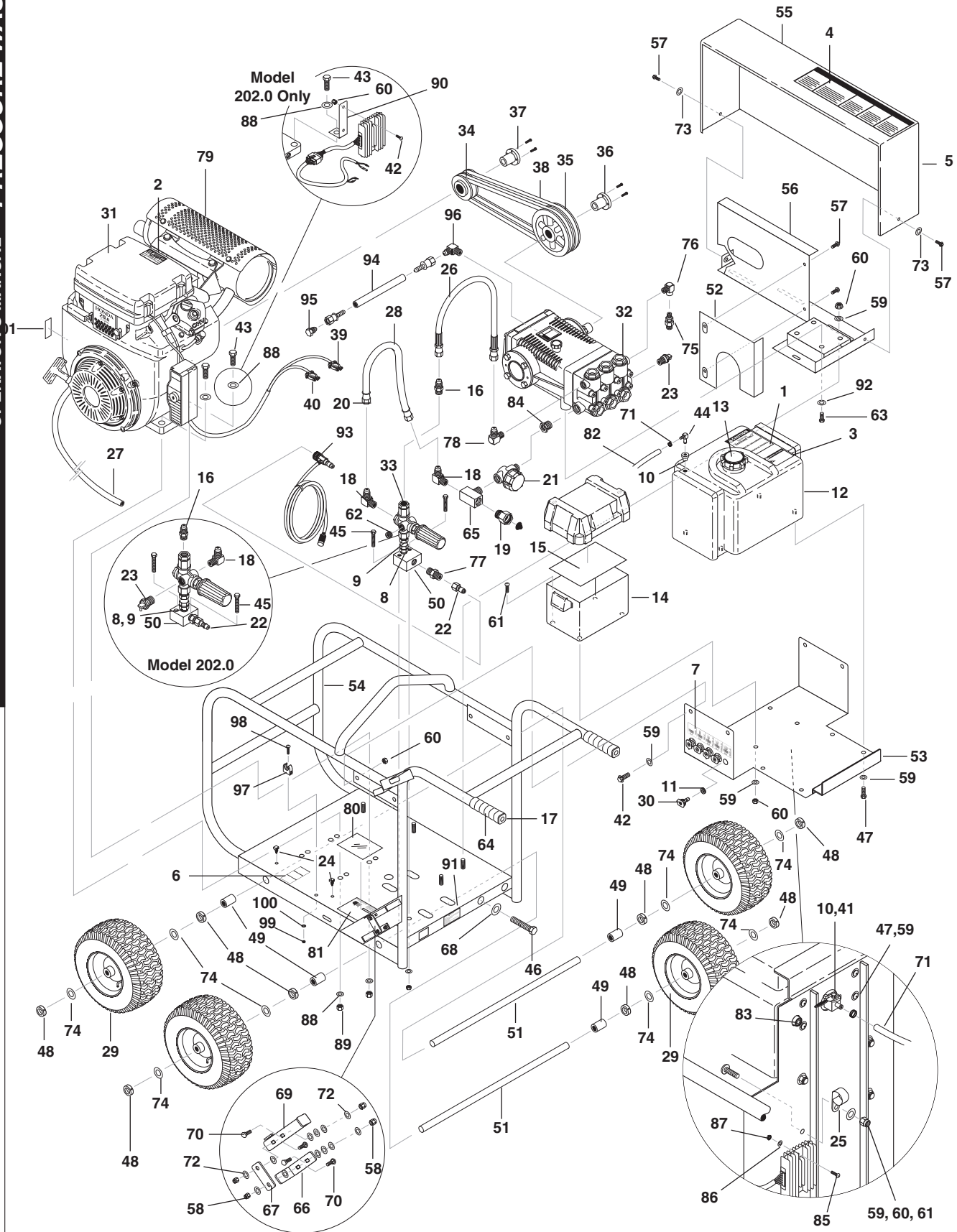
# EXPLODED VIEW - SMALL



## EXPLODED VIEW PARTS LIST- SMALL

ITEM	PART NO.	DESCRIPTION	QTY	ITEM	PART NO.	DESCRIPTION	QTY
1	9.800-006.0	Label, "Hot/Caliente" w/ Arrows Warning	1	28	8.712-331.0	Nozzle, SAQCMEG .0003, Red (203)	1
2	9.800-008.0	Label, Danger Cool Engine	1		8.712-333.0	Nozzle, SAQCMEG 1503, Yellow (203)	1
3	8.932-968.0	Label, Intended For Outdoor Use	1		8.712-334.0	Nozzle, SAQCMEG 2503, Green (203)	1
4	9.800-034.0	Label, Clear Lexan, 2-1/4" x 4-1/2"	1		8.712-335.0	Nozzle, SAQCMEG 2504, White (203)	1
5	9.800-036.0	Label, Warning, Pictoral, Small	1	29		Engine, See Specifications	
6	9.803-842.0	Label, Instructions	1	30		Pump, See Specifications	
7	8.901-146.0	Label, Belt Guard, BR (203, 204, 205, 206)	1	31		Unloader, See Specifications	
8	8.932-967.0	Label, Nozzle Identification	1	32		Engine Pulley, See Specifications	
9	9.802-036.0	Nipple, 1/2" JIC, 3/8" Pipe	2	33		Pump Pulley, See Specifications	
10	9.802-039.0	Elbow, 1/2" JIC, 3/8", 90°	1	34		Engine Bushing, See Specifications	
11	9.802-048.0	Swivel, 1/2" JIC Fem, 3/8" Male	1	35		Pump Bushing, See Specifications	
12	9.802-064.0	Grommet, Rubber, Nozzle Holder	5	36		Belt, See Specifications	
13	9.802-066.0	Pad, Soft Rubber, 50 Duro	2	37	9.802-728.0	Bolt, 3/8" x 2" NCHH	6
14	9.802-070.0	Grip, 1" Square, Handle	2	38	9.802-723.0	Bolt, 3/8" x 1-1/2", NC HH	2
15	9.802-092.0	Belt Guard, CW	1	39	9.802-740.0	Bolt, 1/2" x 3-1/2", NC HH	1
16	9.802-107.0	Fastener, Ratchet, Black Nylon	2	40	9.802-744.0	Bolt, 10mm x 20mm, HH	4
17	9.802-118.0	Elbow, 1/2" Street, Brass	1	41	9.802-753.0	Screw, 1/4" x 3/4" HH NC, Whiz	3
18	9.802-129.0	Elbow, 1/2" JIC x 3/8", 90°	1	42	9.802-779.0	Nut, 3/8" ESNA, NC	4
19	9.802-131.0	Elbow, 1/2" JIC x 1/2", 90°	1	43	9.802-782.0	Collar, 5/8" Bore Shaft 3010	4
20	9.802-146.0	Swivel, 1/2" MP x 3/4" GHF w/Strainer	1	44	9.802-800.0	Washer, 1/2" Flat	1
21	9.802-151.0	Swivel, 1/2" JIC Fem, Push-On	2	45	9.802-807.0	Washer, 3/8" Flat, SAE	8
22	9.802-163.0	Strainer, 1/2" PA, Inline Plastic	1	46	9.802-807.0	Washer, 3/8" Flat, SAE	2
23	9.802-171.0	Nipple, 3/8" x 3/8" NPT ST Male	1	47	9.802-817.0	Washer, 3/8" x 1"	2
24	8.707-254.0	Pump Protector, 3/8" PTP	1	48	9.802-816.0	Washer, 7/16", Lock Split Ring	4
25	9.802-239.0	Hose, 3/8" x 20", 2 Wire, Pres- sure Loop	1	49	9.802-820.0	Washer, Nylon Spacer, 0.656" x 1.25" x 0.65" Thick	2
26	9.802-259.0	Hose, 1/2", Push-On	15"	50	9.802-870.0	Block, Unloader, 3/8" x 3/8" Brass	1
27	9.802-271.0	Wheel & Tire Assy, 6" Steel Rim w/Tube	2	51	8.911-842.0	Slider, Pump/Belt Guard Mount, Red	1
28	8.712-345.0	Nozzle, SAQCMEG 0004, Red (204, 205)	1	52	9.803-110.0	Axle, 5/8" x 27.80 L	1
	8.712-346.0	Nozzle, SAQCMEG 1504, Yellow (204, 205)	1	53	8.912-441.0	Assy, Weld, CW Cage, Small Red	1
	8.712-347.0	Nozzle, SAQCMEG 2504, Green (204, 205)	1	54	9.802-779.0	Nut, 3/8" ESNA, NC	2
	8.712-348.0	Nozzle, SAQCMEG 4004, White (204, 205)	1	55	9.802-776.0	Nut, 5/16" ESNA	4
	8.712-357.0	Nozzle, SAQCMEG 0005.5, Red (206)	1	56	8.718-980.0	Washer, 5/16" Flat	7
	8.712-358.0	Nozzle, SAQCMEG 1505.5, Yel- low (206)	1	57	8.706-984.0	Adapter, 1/2 x 1/2 (203, 204, 205, 206)	1
	8.712-359.0	Nozzle, SAQCMEG 2505.5, Green (206)	1	58	9.800-049.0	Label, Manufacturer's Cleaning Solution	1
	8.712-360.0	Nozzle, SAQCMEG 4005.5, White (206)	1	59	9.802-802.0	Washer, 1/4" Flat	3
				60	9.802-225.0	Chemical Injector Assy, 3-5 GPM, .83	1

# EXPLODED VIEW



## EXPLODED VIEW PARTS LIST

ITEM	PART NO.	DESCRIPTION	QTY
1	9.800-001.0	Label, This Tank For Gas Only (200.0, 201.0)	1
	9.800-000.0	Label, Diesel (202.0)	1
2	9.800-006.0	Label, "Hot/Caliente" w/Arrows	1
3	9.800-008.0	Label, Danger Cool Engine (200.0, 201.0)	1
4	9.800-036.0	Label, Warning Pictoral (Small)	1
5	9.800-047.0	▲ Label, Logo Belt Guard	1
6	9.803-842.0	Label, Instructions	1
7	9.800-010.0	Label, Nozzle Identification	1
8	9.802-036.0	Nipple, 1/2" JIC, 3/8" Pipe	1
9	9.802-048.0	Swivel, 1/2" JIC Fem, 3/8" Male	1
10	9.802-053.0	Bushing, Rubber, Nitrile (202.0)	2
		(200.0, 201.0)	1
11	9.802-064.0	Grommet, Rubber, Nozzle Holder	5
12	9.802-079.0	Tank, Encore, 5 Gallon Tank	1
13	9.802-089.0	Cap, Fuel Tank, Plastic	1
14	9.802-090.0	Battery, Box	1
15	9.802-091.0	Plate, Battery Box, Small, Polypro	1
16	9.802-036.0	Nipple 1/2" JIC x 3/8" Male (202.0)	1
	9.802-037.0	Nipple, 1/2" JIC x 3/8" Female (200.0, 201.0)	1
17	9.802-107.0	Fastener, Ratchet, Black Nylon	2
18	9.802-131.0	Elbow, 1/2" JIC x 1/2", 90° (202.0)	2
		(200.0, 201.0)	1
	9.802-129.0	Elbow, 1/2" JIC x 3/8", 90° (202.0)	1
19	9.802-146.0	Swivel, 1/2"MP x 3/4" GHF w/Strainer	1
20	9.802-151.0	Swivel, 1/2" JIC Fem, Push-On	2
21	9.802-163.0	Strainer, 1/2" PA, Inline Plastic	1
22	9.802-168.0	Nipple, 3/8" Female, 11,000 PSI" (200.0, 201.0)	1
	9.802-171.0	Nipple, 3/8" x 3/8" NPT ST Male (202.0)	1
23	9.802-182.0	Pump Protector, 1/2" PTP (200.0, 201.0)	1
		Pump Protector, 3/8" (202.0)	1
24	9.803-844.0	Cable Tie, Wrap (200.0, 201.0)	2
		(202.0)	3
25	9.802-207.0	Clamp, Round, 0.56 I.D. (200.0, 201.0)	1
26	9.802-247.0	Hose, 3/8" x 14", 2 Wire, 5800 PSI Pressure Loop (200.0, 201.0)	1
		9.802-238.0	Hose, 3/8" x 1/4", 2 Wire Pressure (202.0)
27	9.802-254.0	Hose, 1/4", Push-On, Fuel Line	4.75 ft.
28	9.802-259.0	Hose, 1/2", Push-On	1.25 ft.
29	9.802-271.0	Wheel & Tire Assembly, 6"	4
30	9.802-291.0	Nozzle, SAQCMEG, 0003.5, Red (200.0)	1
	9.802-292.0	Nozzle, SAQCMEG 1503.5, Yellow (200.0)	1
	9.802-293.0	Nozzle, SAQCMEG, 2503.5, Green (200.0)	1
	9.802-294.0	Nozzle, SAQCMEG 4003.5, White (200.0)	1
	9.802-295.0	Nozzle, SAQCMEG 0004, Red (201.0, 202.0)	1
	9.802-296.0	Nozzle, SAQCMEG 1504, Yellow (201.0, 202.0)	1
	9.802-297.0	Nozzle, SAQCMEG 2504, Green (201.0, 202.0)	1
	9.802-298.0	Nozzle, SAQCMEG 4004, White (201.0, 202.0)	1

## EXPLODED VIEW PARTS LIST- LARGE

ITEM	PART NO.	DESCRIPTION	QTY
30	9.802-311.0	Nozzle COMPL, QCEM-6540, Brass	1
31		Engine, See Specifications Pages	
32		Pump, See Specifications Pages	
33		Unloader, See Specifications Pages	
34		Engine Pulley, See Specifications Pages	
35		Pump Pulley, See Specifications Pages	
36		Pump Bushing, See Specifications Pages	
37		Engine Bushing, See Specifications Pages	
38		Belts, See Specifications Pages	
39	9.802-503.0	Cable, Battery, 32" Red, 4 Gauge	1
40	9.802-504.0	Cable, Battery, 36" Black, 4 Gauge	1
41	9.802-177.0	Valve, Shut-Off, 1/4 Turn	1
42	9.802-710.0	Bolt, 5/16" x 1", NC HH (200.0, 201.0) (202.0)	4 6
43	9.802-727.0	Bolt, 3/8" x 1-3/4" (202.0)	4
	9.802-728.0	Bolt, 3/8" x 2", NC, HH (200.0, 201.0)	4
44	9.802-054.0	Elbow, Fuel Tank, Zinc (202.0)	1
45	9.802-728.0	Bolt, 3/8" x 2" NC, HH	2
46	9.803-845.0	Bolt, 1/2" x 5" NC HH Tap (200.0, 201.0)	1
	9.802-740.0	Bolt, 1/2" x 3-1/2", NC, HH (202.0)	1
47	9.802-751.0	Screw, 1/4" x 5/8", Phil PH MS	4
48	9.802-782.0	Collar, 5/8" Bore Shaft	8
49	9.802-820.0	Washer, Nylon Spacer, 0.656 x 1.25 x 0.65	4
50	9.802-870.0	Block, Unloader, 3/8" x 3/8" Brass	1
51	9.803-037.0	Axle, 5/8" x 31.25"	2
52	9.803-104.0	Guard, Belt, Rear Steel	1
53	9.803-847.0	Assembly, Weld, Battery Brkt, CW Cage, Black	1
54	9.802-964.0	Assembly, Weld, Cage, CW Black	1
55	9.803-304.0	Guard, Belt, Front, CW Cage, Large	1
56	9.802-967.0	Assembly, Weld, Slider, CW Cage, Black (200.0, 201.0)	1
	9.803-846.0	Slider, Assembly, Black (202.0)	1
57	9.802-765.0	Screw, 1/4" x 1/2" BH SOC CS	7
58	9.802-773.0	Nut, 1/4" ESNA, NC	4
59	9.802-804.0	Washer, 5/16" Flat, SAE	20
60	9.802-776.0	Nut, 5/16" ESNA, NC (200.0, 201.0) (202.0)	12 14
61	9.802-708.0	Screw, 5/16"-18 x 3/4" M PH TRH	4
62	9.802-124.0	Plug, 1/4" Countersunk (200.0, 201.0)	1
63	9.802-744.0	Bolt, 10mm x 20mm, HH	4
64	9.802-070.0	Grip, 1" Square Handle	2
65	9.802-118.0	Tee, 1/2", Branch Male	1
66	9.802-996.0	Bracket, Brake Pad, Black	1
67	9.802-997.0	Linkage, Brake, Black	1
68	9.802-800.0	Washer, 1/2" Flat	1



## EXPLODED VIEW PARTS LIST- LARGE

ITEM	PART NO.	DESCRIPTION	QTY
69	9.802-966.0	Handle, Break, CW Cage, Black	1
70	9.802-705.0	Bolt, Carriage, Zinc, 1/4"-20 x 1.0 PLT	4
71	9.802-210.0	Clamp, Hose, .46-.54 ST (200.0, 201.0) (202.0)	2 4
72	9.802-802.0	Washer, 1/4" Flat, SAE	12
73	9.802-803.0	Washer, 1/4" Flat, SAE, Black, Zinc	5
74	9.802-810.0	Washer, 5/8" Flat	8
75	9.803-843.0	Valve, Safety Relief, 6000PSI (200.0, 201.0)	1
76	9.802-030.0	Elbow, 3/8" Street, Female (200.0, 201.0)	1
77	9.802-011.0	Nipple, 3/8" Hex Steel (200.0, 201.0)	1
78	9.802-039.0	Elbow, 1/2" JIC, 3/8", 90°	1
79	9.802-689.0	Muffler, Honda, GX620/670 Right (200.0, 201.0)	1
	9.802-691.0	▲ Deflector, Exhaust, Honda (200.0, 201.0)	1
80	9.800-034.0	Clear Lexan	1
81	9.800-014.0	Label, Intended For Outdoor Use	1
82	9.802-254.0	Hose, 1/4 Push-On (202.0)	7.66 ft.
83	9.802-035.0	Plug, 1/8" Square Head, Black	1
84	9.802-148.0	Adaptor, 1/2" x 1/2"	1
85	9.802-770.0	Screw, 1/4" x 1" (200.0, 201.0)	2
86	9.802-803.0	Washer, 1/4" Flat, SAE, Black (200.0, 201.0)	2
87	9.802-773.0	Nut, 1/4" ESNA (200.0, 201.0)	2
88	9-802-807.0	Washer, 3/8" Flat	10
89	9.802-779.0	Nut, 3/8" ESNA	6
90	9.803-305.0	Bracket, Regulator	1
91	9.800-049.0	Label, Manufacturer's Cleaning Solution	1
92	9.802-816.0	Washer, 7/16" Lock, Split Ring	4
93	9.802-225.0	Chemical Injector Assy., 3-5 GPM, .83 (202.0)	1
	9.802-226.0	Downstream Inj. Assy, 5000 PSI (200.0, 201.0)	1
94	9.802-259.0	Hose, 1/2" Push-On	14"
95	9.802-126.0	Plug, 1/2" JIC	1
96	9.802-129.0	Elbow, 1/2" JIC x 3/8"	1
97	9.802-203.0	Clamp, 1/2"	1
98	9.802-771.0	Screw, 10/32"	1
99	9.804-567.0	Nut, 10/32"	1
100	9.802-802.0	Washer, 1/4" Flat, SAE	1
101	8.916-084.0	Label, C-tech EPA	1

▲ Not Shown

## SPECIFICATIONS

Machine Model	Engine Pulley	Pulley Description	Engine Bushing#	Bushing Description	Pump Pulley	Pump Description	Pump Bushing#
1.575-200.0	9.802-392.0	3TB34	9.802-404.0	P2 x 1"	9.802-396.0	3BK90H	9.802-403.0
1.575-201.0	9.802-392.0	3TB34	9.802-405.0	P2 x 1-1/8"	9.802-395.0	3BK80H	9.802-403.0
1.575-202.0	9.802-381.0	2BK32H	9.802-398.0	H x 1"	9.802-390.0	2BK90H	9.802-402.0
1.575.203.0	9.802-384.0	2BK40H	9.802-398.0	H x 1"	8.715-592.0	2BK80H	9.802-402.0
1.575-204.0	9.802-381.0	2BK32H	9.802-398.0	H x 1"	9.802-390.0	2BK90H	9.802-402.0
1.575-205.0	9.802-381.0	2BK32H	9.802-398.0	H x 1"	9.802-390.0	2BK90H	9.802-402.0
1.575-206.0	9.802-382.0	2BK32H	9.802-398.0	H x 1"	8.715-592.0	2BK80H	9.802-402.0
1.575-207.0	9.802-382.0	2BK34H	9.802-398.0	H x 1"	9.802-390.0	2BK90H	9.802-403.0

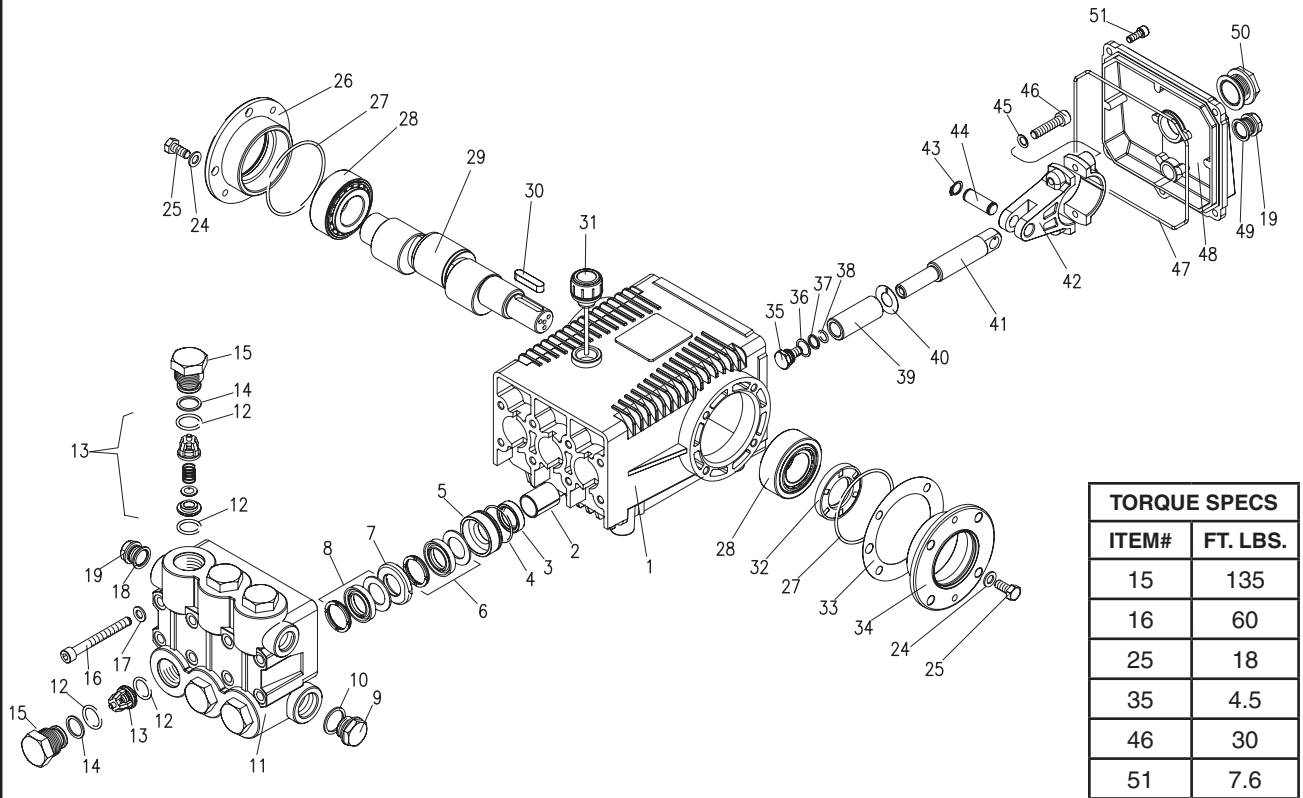


## SPECIFICATIONS

Machine Description	Bushing Model	Belt Part No.	Belt Desc./Qty.	Pump Part No.	Unloader Part No.	Engine Description	Engine Part No.
1.575-200.0	25mm	9.802-419.0	BX42 (3)	9.804-491.0	9.804-491.0	GX620 (20 HP)	9.802-323.0
1.575-201.0	25mm	9.802-419.0	BX42 (3)	9.804-491.0	9.804-491.0	GX670 (24 HP)	9.802-323.0
1.575-202.0	25mm	9.802-419.0	BX42 (2)	9.802-343.0	9.802-367.0	GX670 (24 HP)	9.802-328.0
1.575-203.0	24mm	9.802-417.0	BX38 (2)	8.904-689.0	9.802-367.0	GX390	9.802-322.0
1.575-204.0	24mm	9.802-418.0	BX39 (2)	9.802-343.0	9.802-367.0	GX390	9.802-322.0
1.575-205.0	24mm	9.802-418.0	BX39 (2)	9.802-343.0	9.802-367.0	GX390	9.802-322.0
1.575-206.0	24mm	8.715-698.0	BX37 (2)	9.802-342.0	9.802-367.0	GX390	9.802-322.0
1.575-207.0	25mm	9.802-420.0	BX43 (2)	9.802-345.0	9.802-367.0	Vanguard 16 HP	8.715-065.0

# KH PUMP EXPLODED VIEW

9.804-491.0 KH5050-Right



TORQUE SPECS	
ITEM#	FT. LBS.
15	135
16	60
25	18
35	4.5
46	30
51	7.6

## KH PUMP EXPLODED VIEW PARTS LIST

ITEM	PART NO.	DESCRIPTION	QTY	ITEM	PART NO.	DESCRIPTION	QTY
1	9.803-163.0	Crankcase	1	19	9.802-925.0	Brass Plug 3/8	2
2	9.803-195.0	Plunger Guide	3	24	9.802-884.0	Washer	8
3*	9.802-606.0	Plunger Oil Seal	3	25	9.802-944.0	Hexagonal Screw	8
4*	9.803-190.0	O-Ring Ø1.78 x 37.82	3	26	9.804-501.0	Closed Bearing Housing	1
5*	9.804-494.0	Pressure Ring 18mm	3	27	9.803-186.0	"O" Ring Ø2.62 x 71.12	2
6*	9.804-495.0	"U" Seal, dia 18 x 26mm	3	28	9.804-502.0	Roller Bearing	2
7*	9.804-496.0	Support Ring 18mm	3	29	9.803-289.0	Crankshaft	1
8*	9.804-497.0	"U" Seal, dia. 18 x 28mm	3	30	9.803-293.0	Crankshaft Key	1
9	9.802-926.0	Brass Plug, 1/2	1	31	9.802-923.0	Oil Dip Stick	1
10	9.803-199.0	Copper Washer 3/4	1	32	9.803-139.0	Crankshaft Seal	1
11	9.803-290.0	Manifold Housing	1	33	9.803-177.0	Shim	2
12*	9.804-498.0	O-Ring Ø2.62 x 23.47	12	34	9.804-503.0	Bearing Housing	1
13*	9.804-499.0	Valve Assembly	6	35*	9.802-936.0	Plunger Bolt	3
14*	9.804-500.0	Teflon Ring	6	36*	9.802-885.0	Copper Spacer	3
15	9.803-292.0	Valve Plug	6	37*	9.803-188.0	"O" Ring Ø1.78 x 7.66	3
16	9.802-942.0	Manifold Stud Bolt	8	38*	9.803-155.0	Teflon Ring	3
17	9.802-890.0	Lock Washer	8	39*	9.804-504.0	Plunger 18mm	3
18	9.803-198.0	Copper Washer 3/8	1	40*	9.802-888.0	Copper Spacer	3

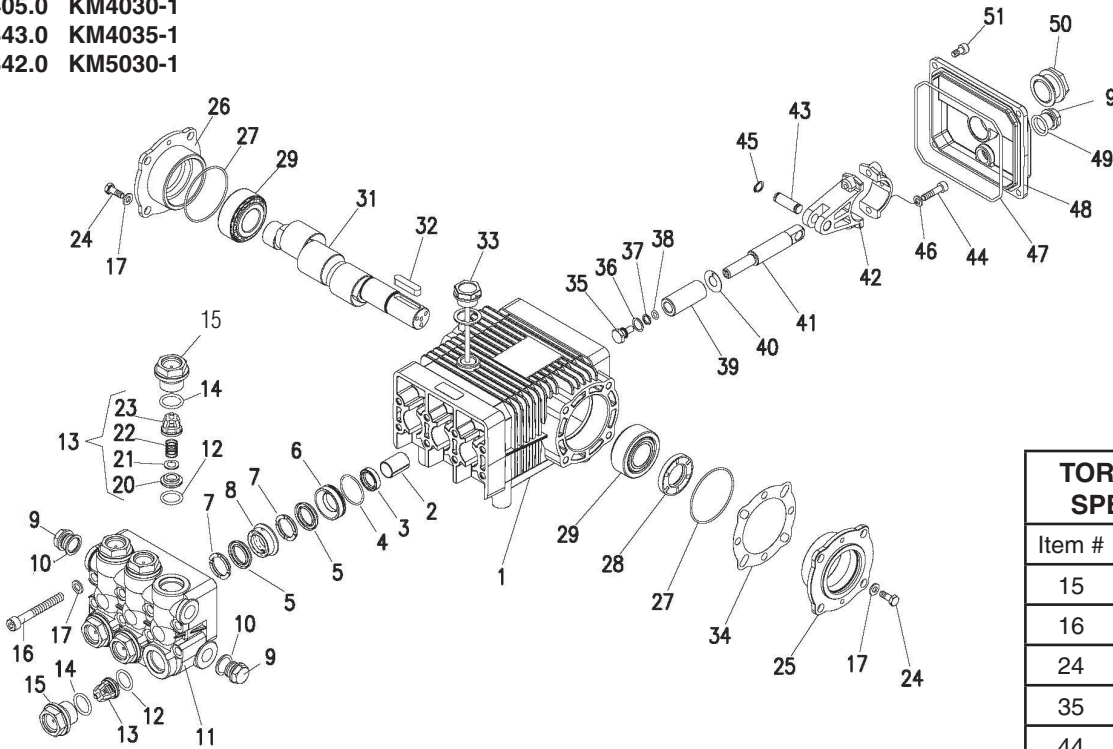
## KH PUMP EXPLODED VIEW PARTS LIST (CONT.)

ITEM	PART NO.	DESCRIPTION	QTY
41	9.803-294.0	Plunger Rod	3
42	9.803-157.0	Connecting Rod	3
43	9.802-912.0	Snap Ring	6
44	9.802-915.0	Connecting Rod Pin	3
45	9.802-889.0	Spring Washer	6
46	9.802-937.0	Connecting Rod Screw	6
47	9.803-194.0	"O" Ring Ø2.62 x 152.07	1
48	9.803-166.0	Crankcase Cover	1
49	9.803-197.0	Gasket, G3/8	1
50	9.803-202.0	Sight Glass, G3/4	1
51	9.802-939.0	Cover Screw	5

KIT NUMBERS	9.804-492.0	9.804-493.0	9.802-629.0	9.802-604.0	9.802-606.0
<b>KIT DESCRIPTION</b>	Plunger Seal 18 mm	Seal Packing 18 mm	Plunger 18 mm	Complete Valve	Plunger Oil Seals
<b>ITEMS NUMBERS INCLUDED</b>	4, 6, 8	4, 5, 6, 7, 8	35, 36, 37, 38, 39, 40	12, 13, 14	3
<b>NUMBER OF CYLINDERS KIT WILL SERVICE</b>	3	1	1	6	3

## KM-1 PUMP EXPLODED VIEW

8.904-689.0 KM3540-1  
 9.803-405.0 KM4030-1  
 9.802-343.0 KM4035-1  
 9.802-342.0 KM5030-1



TORQUE SPECS	
Item #	Ft.-lbs
15	75
16	30
24	8
35	4.5
44	13
51	7.6

## KM-1 PUMP EXPLODED VIEW PARTS LIST

ITEM	PART NO.	DESCRIPTION	QTY	ITEM	PART NO.	DESCRIPTION	QTY
1	8.717-128.0	Crankcase	1	9	9.802-926.0	Brass Plug 1/2"	1
2	9.803-196.0	Plunger Guide	3	10	9.803-199.0	Copper Washer 1/2"	1
3*	See Kits Below	Plunger Oil Seal	3	11	9.802-932.0	Manifold Head	1
4*	9.803-189.0	O-Ring Ø1.78 x 31,47	3	12*	9.803-191.0	O-Ring Ø2.62 x 17.13	6
5*	See Kits Below	"V" Seal (4035)	6	13*	See Kits Below	Valve Assembly	6
	See Kits Below	"V" Seal (4030, 5030)	6	14*	9.803-193.0	O-Ring Ø2.62 x 20.29	6
	See Kits Below	"V" Seal (3540)	6	15	9.802-928.0	Valve Plug	6
6*	9.803-205.0	Pressure Ring 18mm (4035)	3	16	9.802-925.0	Manifold Stud Bolt	8
	9.803-204.0	Pressure Ring 20mm (4030, 5030)	3	17	9.802.884.0	Washer	16
	8.717-310.0	Pres Ring 15mm (3540)	3	18	9.803-198.0	Copper Washer 3/8	1
7*	9.803-171.0	Support Ring 18mm (4035)	6	19	9.802-925.0	Brass Plug 3/8	1
	9.803-172.0	Support Ring 20mm (4030, 5030)	6	24	9.802-944.0	Hexagonal Screw	8
	8.717-179.0	Support Ring 15mm (3540)	6	25	8.717-209.0	Bearing Housing	1
8*	9.803-174.0	Intermed. Ring 18mm (4035)	3	26	8.717-210.0	Closed Bearing Housing	1
	9.803-173.0	Intermed. Ring 20mm (4030, 5030)	3	27	9.803-192.0	O-Ring Ø1.78 x 60.05	2
	8.717-178.0	Intermediate Ring 15mm (3540)	3	28	9.803-140.0	Crankshaft Seal	1
				29	9.803-159.0	Tapered Roller Bearing	2

## KM-1 PUMP EXPLODED VIEW PARTS LIST (CONT.)

ITEM	PART NO.	DESCRIPTION	QTY
31	9.803-146.0	Crankshaft (5030, 3540)	1
	9.803-147.0	Crankshaft (4030, 4035/H)	1
32	9.803-167.0	Crankshaft Key	1
33	9.802-921.0	Oil Dip Stick	1
34	9.803-178.0	Shim	2
35*	9.802-936.0	Plunger Bolt	3
36*	9.802-885.0	Copper Spacer	3
37*	9.803-188.0	O-Ring Ø1.78 x 7.66	3
38*	9.803-155.0	Teflon Ring	3
39*	See Kits Below	Plunger (4035, 4035H)	3
	See Kits Below	Plunger (4030, 5030)	3
	See Kits Below	Plunger (3540)	3
40*	9.802-888.0	Copper Spacer	3
41	9.803-144.0	Plunger Rod	3
42	9.803-158.0	Connecting Rod	3
43	9.802-916.0	Connecting Rod Pin	3
44	9.803-238.0	Connecting Rod Screw	6
45	9.802-913.0	Snap Ring	6
46	9.803-218.0	Spring Washer	6
47	8.717-243.0	O-Ring, Ø2.62 x 126.67	1
48	8.717-145.0	Crankcase Cover	1
49	9.803-906.0	O-Ring, Ø1.78 x 14	1
50	9.803-202.0	Sight Glass 3/4	1
51	9.802-939.0	Cover Screw	5
52	8.730-836.0	▲ Bach Ring 1/2" (4035H)	3

\* Available in kit (See below) ▲ Not Shown

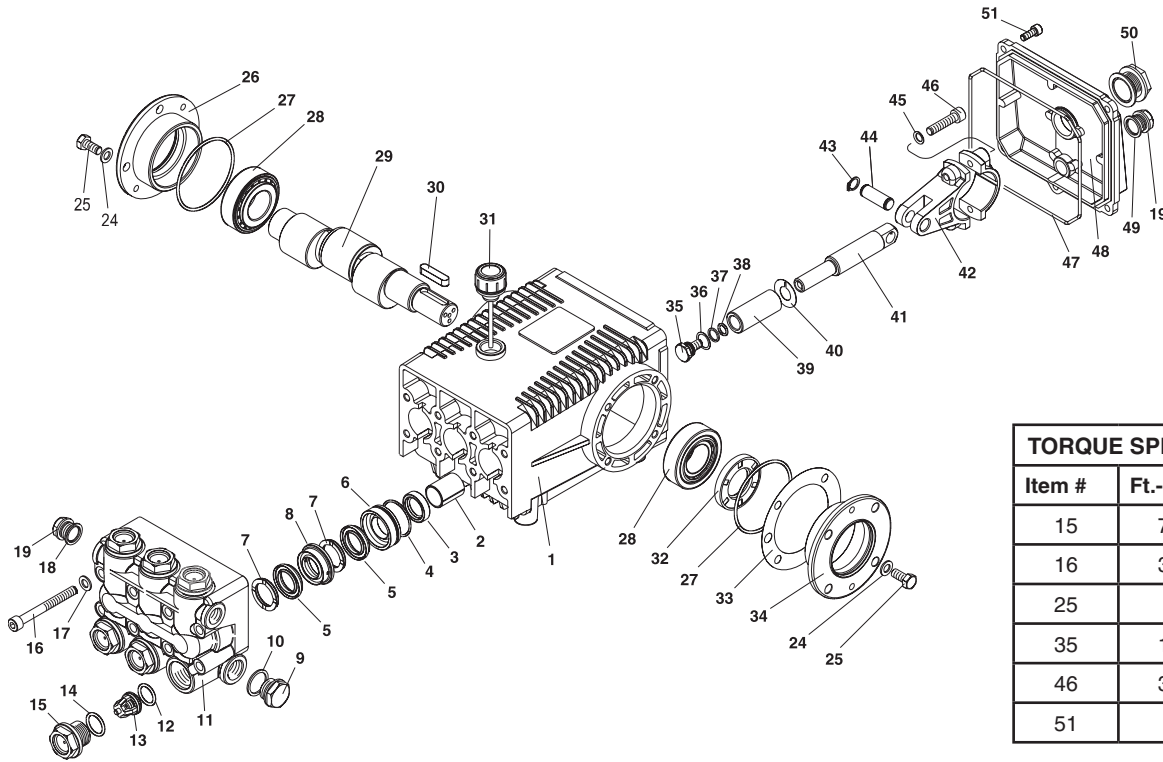
REPAIR KIT NUMBER	9.802-628.0	9.802-619.0	9.802-622.0	9.802-624.0	9.802-617.0	9.802-623.0
KIT DESCRIPTION	*Plunger Seal KM-4035	Plunger Seal KM-4030 KM-5030	Plunger Seal KM-3540	**Complete Seal Packing KM-4035	Complete Seal Packing KM-4030 KM-5030	Complete Seal Packing KM-3540
ITEM NUMBERS INCLUDED	4, 5, 7	4, 5, 7	4, 5, 7	3, 4, 5, 6, 7, 8	3, 4, 5, 6, 7, 8	3, 4, 5, 6, 7, 8
NO. OF CYLINDERS KIT WILL SERVICE	3	3	3	1	1	1

REPAIR KIT NUMBER	9.802-629.0	9.802-620.0	9.802-621.0	9.802-603.0	9.802-609.0
KIT DESCRIPTION	Plunger KM-4035 KM-4035H	Plunger KM-4030 KM-5030	Plunger KM-3540	Complete Valve	Plunger Oil Seals
ITEM NUMBERS INCLUDED	34, 35, 36, 37, 38, 39	34, 35, 36, 37, 38, 39	34, 35, 36, 37, 38, 39	12, 13, 14	3
NO. OF CYLINDERS KIT WILL SERVICE	1	1	1	6	3

\* For KM 4035H High Heat Packings, Use 9.802-626.0    \*\*For KM 4035H High Heat Packings, Use 9.802-627.0

# KT SERIES PUMP EXPLODED VIEW

9.802-345.0 KT 4035 Right



TORQUE SPECS	
Item #	Ft.-Lbs.
15	75
16	32
25	8
35	15
46	30
51	8

## KT SERIES PUMP EXPLODED VIEW & PARTS LIST

ITEM	PART NO.	DESCRIPTION	QTY	ITEM	PART NO.	DESCRIPTION	QTY
1	9.804-604.0	Crankcase	1	15	9.802-928.0	Valve Plug	6
2	9.803-195.0	Plunger Guide	3	16	9.802-943.0	Manifold Stud Bolt	8
3*	See Kit Below	Plunger Oil Seal	3	17	9.802-890.0	Washer	8
4*	9.803-190.0	O-Ring Ø1.78 x 31, 47	3	18	9.803-198.0	Copper Washer 3/8"	1
5*	See Kit Below	"V" Seal, Plunger	6	19	9.802-925.0	Brass Plug 3/8"	1
6*	9.803-206.0	Pressure Ring (KT 4035, 4040, 6035)	3	24	9.802-884.0	Washer	8
	9.803-207.0	Pressure Ring (KT 5030)	3	25	9.802-944.0	Hexagonal Screw	8
7*	9.803-169.0	Support Ring (KT 4035, 4040, 6035)	6	26	9.803-182.0	Closed Bearing Housing	1
	9.803-170.0	Support Ring (KT 5030)	6	27	9.803-186.0	O-Ring Ø2.62 x 71.12	2
8*	9.803-175.0	Intermed. Ring (KT 4035, 4040, 6035)	3	28	9.803-160.0	Roller Bearing, Tapered	2
	9.803-176.0	Intermed. Ring (KT 5030)	3	29	9.803-148.0	Crankshaft (4040, 5030, 6035)	1
9	9.802-926.0	Brass Plug, 1/2"	1		9.803-149.0	Crankshaft (KT 4035)	
10	9.803-199.0	Copper Washer 1/2"	1	30	9.803-167.0	Crankshaft Key	1
11	9.802-933.0	Manifold Head	1	31	9.802-923.0	Oil Dip Stick	1
12*	9.803-191.0	O-Ring Ø2.62 x 17.13	6	32	9.803-139.0	Crankshaft Seal	1
13*	See Kit Below	Valve Assembly	6	33	9.803-177.0	Shim	2
14*	9.803-193.0	O-Ring Ø2.62 X 20.29	6	34	9.803-181.0	Bearing Housing	1
				35*	9.803-235.0	Plunger Bolt	3
				36*	9.802-886.0	Copper Spacer	3
				37*	9.803-187.0	O-Ring Ø1.78 X10.82	3



## KT SERIES PUMP EXPLODED VIEW & PARTS LIST

ITEM	PART NO.	DESCRIPTION	QTY
38*	9.803-154.0	Teflon Ring	3
39*	See Kit Below	Plunger (KT 4035, 4040, 6035)	3
	See Kit Below	Plunger (KT 5030)	3
40*	9.802-887.0	Copper Spacer	3
41	9.803-143.0	Plunger Rod	3
42	9.803-157.0	Connecting Rod	3
43	9.802-912.0	Snap Ring	6
44	9.802-915.0	Connecting Rod Pin	3
45	9.802-889.0	Spring Washer	6
46	9.802-937.0	Connecting Rod Screw	6
47	9.803-194.0	O-Ring Ø2.62 x 152.07	1
48	9.803-166.0	Crankcase Cover	1
49	9.803-197.0	Gasket, G3/8	1
50	9.803-202.0	Sight Glass G3/4	1
51	9.802-939.0	Cover Screw	5

\* Part available in kit (See below)

REPAIR KIT NUMBER	9.802-605.0	9.802-610.0*	9.802-625.0	9.802-618.0**	9.802-607.0	9.802-611.0	9.802-603.0	9.802-606.0
KIT DESCRIPTION	Plunger Seal KT-4040, KT-6035 KT-4035	Plunger Seal KT-5030	Complete Seal Packing KT-4040 KT-6035 KT-4035	Complete Seal Packing KT-5030	Plunger KT-4040 KT-6035 KT-4035	Plunger KT-5030	Complete Valve (all pumps)	Plunger Oil Seals (all pumps)
ITEM NUMBERS INCLUDED	4, 5, 7	4, 5, 7	3, 4, 5, 6, 7, 8	3, 4, 5, 6, 7, 8	35, 36, 37, 38, 39, 40	35, 36, 37, 38, 39, 40	12, 13, 14	3
NUMBER OF CYLINDERS KIT WILL SERVICE	3	3	1	1	1	1	6	3

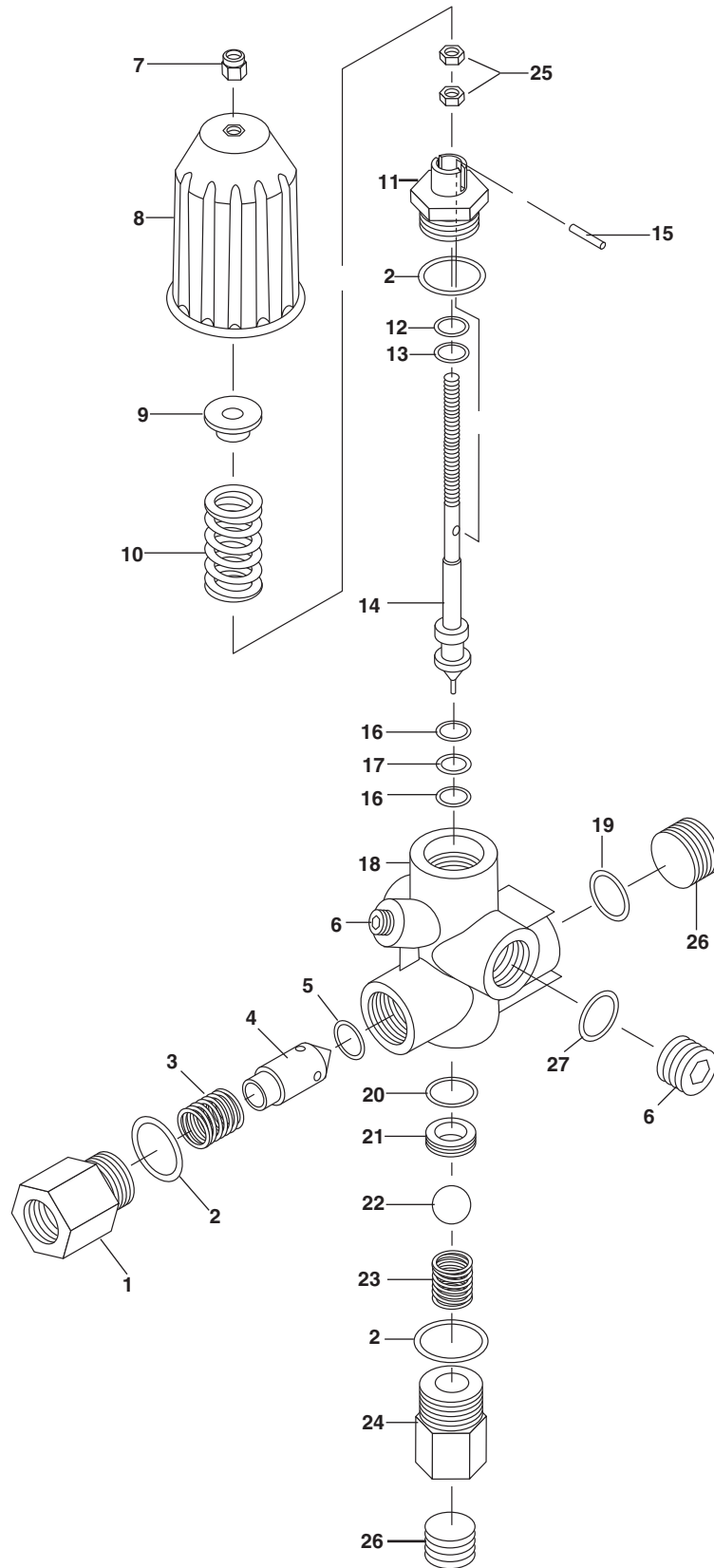
\* High Heat, Use 9.802-631.0 KT-5030H/R

\*\* High Heat, Use 9.802-630.0 KT-5030H/R

# AR-AL UNLOADER EXPLODED VIEW AND PARTS LIST

AR - AL 607 #9.802-367.0

7-8 Gpm, 4200 Psi



## AR-AL UNLOADER EXPLODED VIEW AND PARTS LIST

ITEM	PART NO.	DESCRIPTION	QTY	ITEM	PART NO.	DESCRIPTION	QTY
1	83-005150010	Check Connector	1	15	83-005106301	Spring Pin	1
2	83-005060108	‡ O-Ring 2068	3	16	83-005000101	Back Ring	2
3	83-005100002	Shutter Spring	1	17	83-005060101	‡ O-Ring 2050	1
4	83-004120000	Shutter	1	18	83-005020003	Body By Pass 1/4 G-F	1
5	83-004060109	‡ O-Ring 631290 SH	1	18	83-005020026	Body By Pass 3/8 G-F	1
6	83-005170102	1/4 G Plug	1	19	83-005060200	3/8 Gasket	1
7	83-005030101	M8 Lock Nut	1	20	83-001060129	‡ O-Ring 2043	1
8	83-005100100	Knob	1	21	83-001060200	‡ Seat	1
9	83-005150101	Washer	1	22	83-001160000	‡ Ball	1
10	83-005400403	4000 PSI Spring (Black)	1	23	83-005100003	Ball Spring	1
11	83-005150011	Stem Guide Union	1	24	83-005150009	Seat Union	1
12	83-005000102	‡ Back Ring	2	25	83-005030200	M8 Nut	2
13	83-005060106	‡ O-Ring 2031	1	26	83-005170101	3/8G Plug	2
14	83-005160502	Stem AL606	1	27	83-005060201	Gasket	1
14	83-005160514	Stem AL607	1	<b>83-005650200 ‡ Repair Kit</b>			

### Unloader Adjustment Procedures

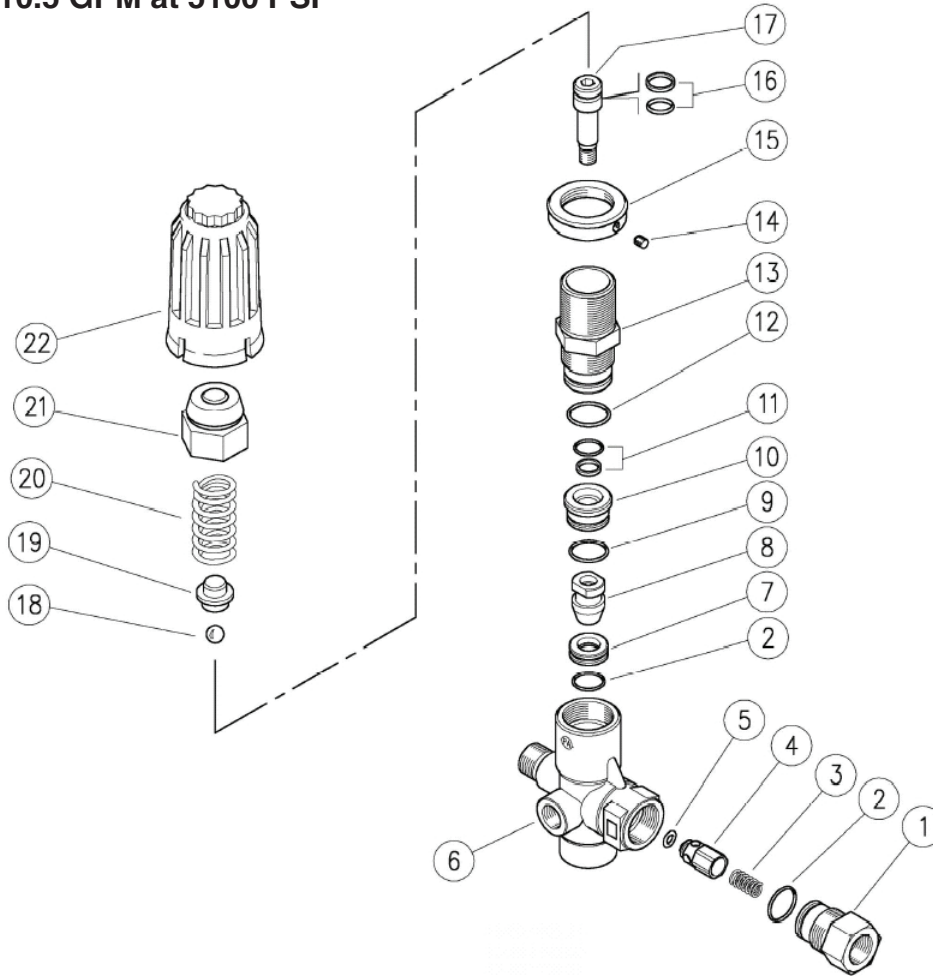
1. Remove lock nut (Item 7).
2. Remove adjustment knob (Item 8).
3. Loosen the (2) nuts (Item 25), move them upward on stem (Item 14) till you see 4 or more threads below the nut.
4. Re-attach adjusting knob (Item 8).
5. Start machine. Open the trigger of the spray gun. Increase pressure by turning adjustment knob (Item 8) clockwise till pressure is at the desired operating pressure.
6. Remove the adjustment knob (Item 8), tighten the lower nut (items 25) tightly against the upper nut (Items 25). Re-attach adjustment knob (Item 8) and screw down until contact is made with the nuts (Items 25). Screw down lock nut (Item 7) onto the stem (Item 14) until the stem (Item 14) threads cut into the nylon insert of the lock nut (Item 7).

\*If adjustment knob (Item 8) **DOES NOT** make contact with upper nut (Items 25), remove adjusting knob (Item 8), re-adjust (raise) nuts (Items 25) on stem (Item 14) and re-attach adjustment knob (Item 8), then repeat step #6.

\*\*If adjustment knob (Item 8) **DOES** make contact with upper nut; release the trigger of the spray gun and watch the pressure gauge for the pressure increase (“spike”). This “spike” **SHOULD NOT** exceed 500 psi above the operating pressure. If “spike” pressure exceeds the 500 psi limit, remove the adjusting knob (Item 8) and re-adjust (lower) the nuts (Items 25) on the stem (Item 14). Re-attach the adjusting knob (Item 8), then repeat step #6.

## VB350/4 UNLOADER EXPLODED VIEW

9.802-360.0, 10.5 GPM at 5100 PSI



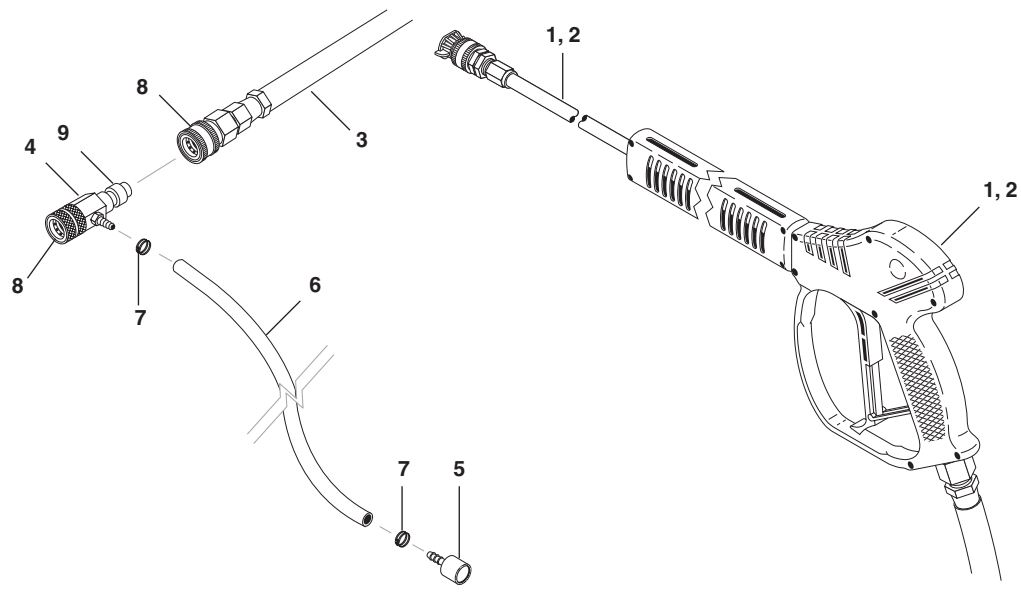
### VB UNLOADER EXPLODED VIEW PARTS LIST

ITEM	PART #	DESCRIPTION	QTY	ITEM	PART #	DESCRIPTION	QTY
1	60.1811.31	3/8 Bsp F Nipple	1	16	60.0978.24*	VB280-350 Val. Pist. Seal Repair Set	1
2	10.3066.01*	O-Ring, 1.78 x 15.6 mm	2	17	60.1806.51	M8 Piston	1
3	60.0053.51	Spring	1	18	14.7443.10*	Sst 11/32" Ball	1
4	60.0052.51	Sst Check Valve	1	19	60.1813.31	Spring Guide	1
5	10.3213.08*	O-Ring, 3 x 6mm	1	20	60.0975.61	4.2 mm Spring (60.1600.00)	1
6	60.1725.35	VB280-350 Brass Body	1		60-1812.61	4.5 x 47 mm Spring (60.1700.00)	1
7	60.1809.51*	Seat	1	21	60.1727.31	Brass Cap	1
8	60.1808.51*	M 8 Shutter	1	22	60.1726.84	VB280 Black Plastic Knob (60.1600.00)	1
9	10.3068.01*	O-Ring, 1.78 x 17.17 mm	1		60.1729.84	VB350.4 Red Plastic Knob (60.1700.00)	1
10	60.1810.31	Spacer	1				
11	60.0979.24*	VB280-350 Val. Pist. Seal Repair Set	1				
12	10.3072.01*	O-Ring, 1.78 x 20.35 mm	1				
13	60.0973.31	Piston Housing (60.1600.00)	1				
	60.1805.31	Piston Housing (60.1700.00)	1				
14	16.2100.00	M 4 x 4 mm Dowel	1				
15	60.1728.31	Lock Nut	1				

\*Kit :

K1 60.1615.24 VB280-350.4 Spare Parts Kit  
Pcs. 11 x 1

## HOSE & SPRAY GUN ASSEMBLY



### HOSE & SPRAY GUN ASSEMBLY PARTS LIST

ITEM	PART NO.	DESCRIPTION	QTY	ITEM	PART NO.	DESCRIPTION	QTY
1	9.802-228.0	Spray Gun w/Wand (5000 PSI), w/Coupler (200, 201)	1	4	9.802-216.0	Injector, Detergent, Non-Adj, 3-5 GPM, 0.083	1
	9.802-222.0	Wand, V.P. w/Coupler & Nozzle, X-Series	1		9.802-217.0	Injector, SS, Non-Adj, 2.0-4.0GPM, 5500PSI	1
2	8.711-348.0	Spray Gun, Shut-Off, AP 1000 (203, 204, 205, 206, 207)	1	5	9.802-160.0	Strainer, Plastic, 1/4" Hose Barb	1
3	8.739-042.0	Hose, 3/8" x 50', 2-Wire, (200,201)	1	6	9.802-251.0	Tube, 1/4" x 1/2", Clear Vinyl	6 ft.
	8.711-720.0	Hose, 3/8" x 50', 2-Wire, Blue (203, 205, 207)	1	7	9.802-210.0	Clamp, Hose, .46-.54 ST	2
	8.711-722.0	Hose, 3/8" x 50', 2-Wire, (202, 204, 206)	1	8	9.802-167.0	Coupler, 3/8" Female, 11,000 PSI, Snap-Tite	1
				9	9.802-168.0	Nipple, 3/8" Fem, 11,000 PSI	1