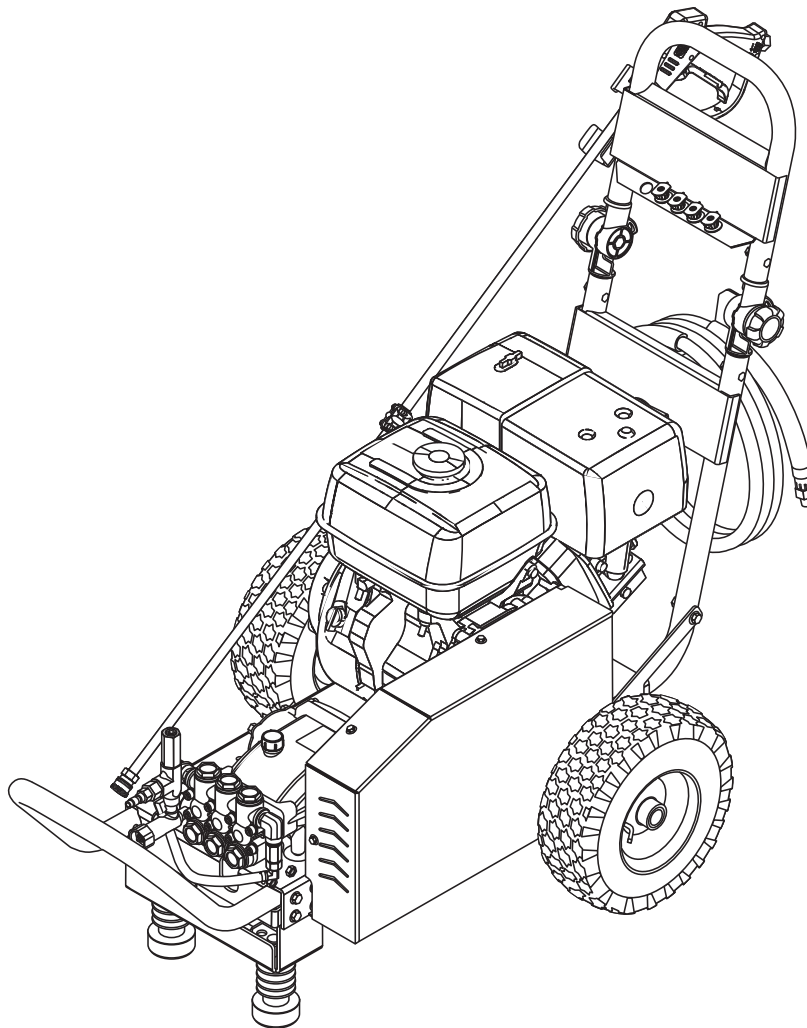
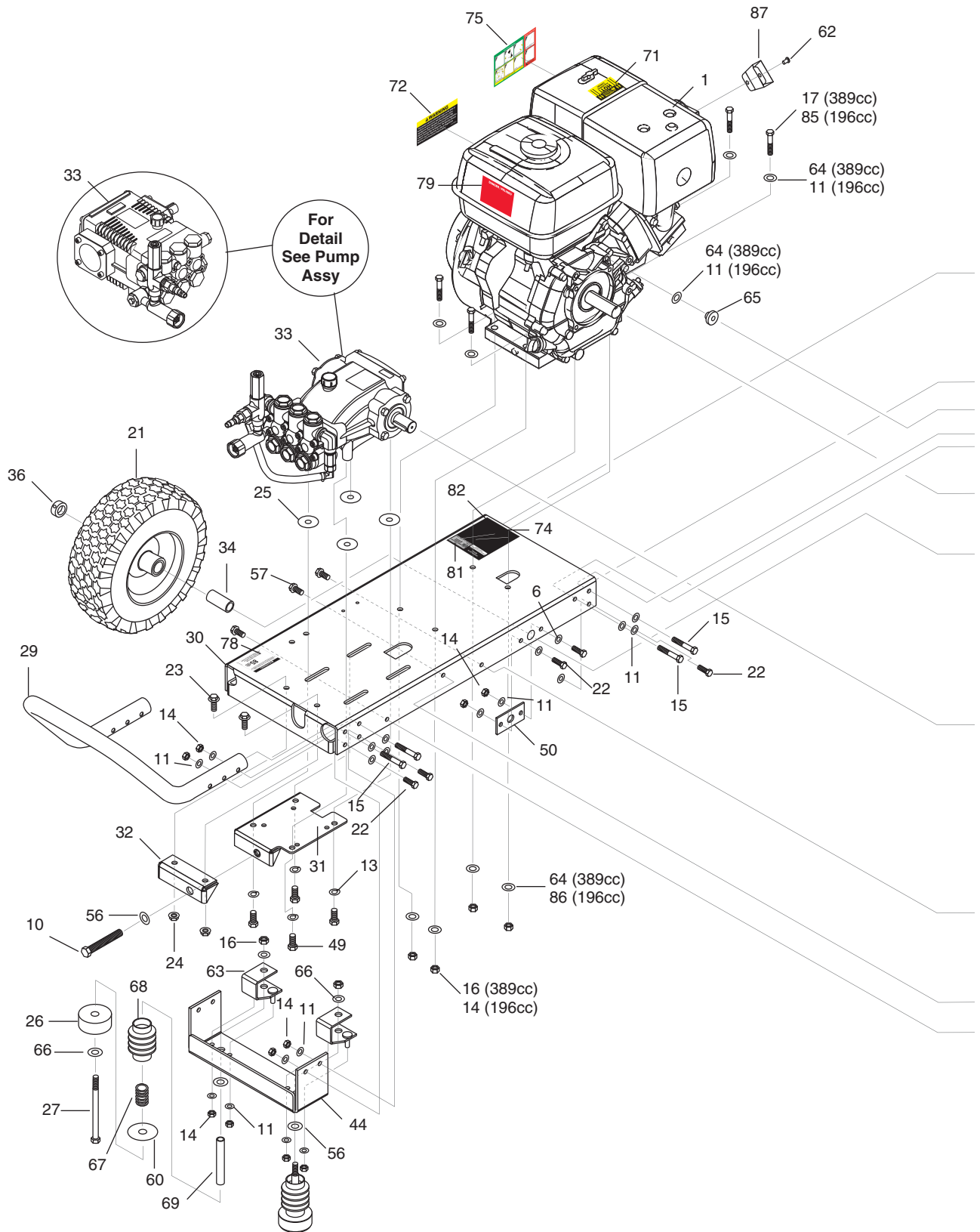


SERVICE MANUAL

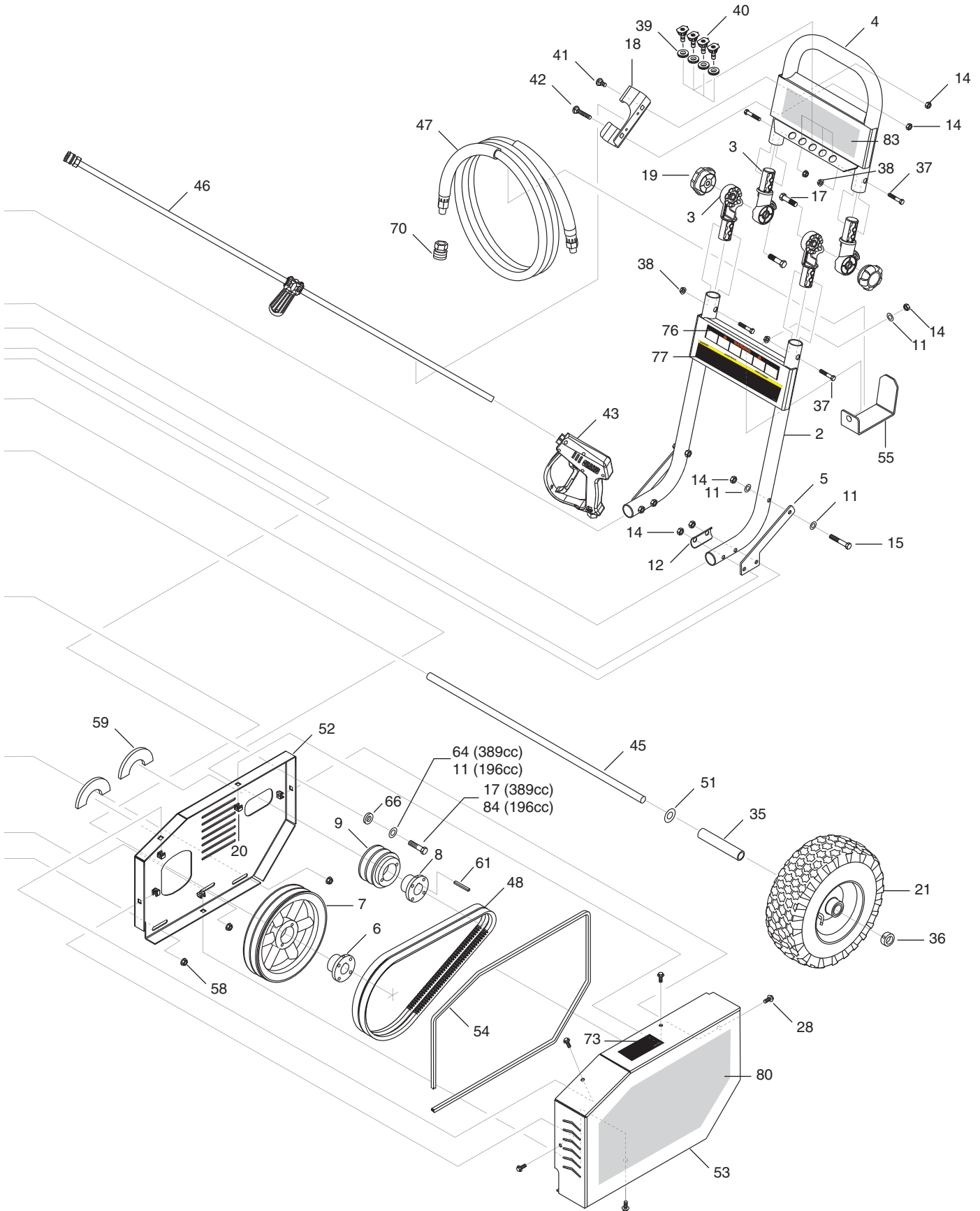


MODEL #	ORDER #
HD 2.5/27 PB AL	1.107-132.0
HD 3.7/35 PB AL	1.107-133.0
PGA3-27324	1.107-127.0
PGA4-35324	1.107-128.0
BXA-252739	1.107-120.0
BXA-373539	1.107-121.0
BGA-252737	1.106-057.0
BGA-373537	1.106-058.0

EXPLODED VIEW



EXPLODED VIEW



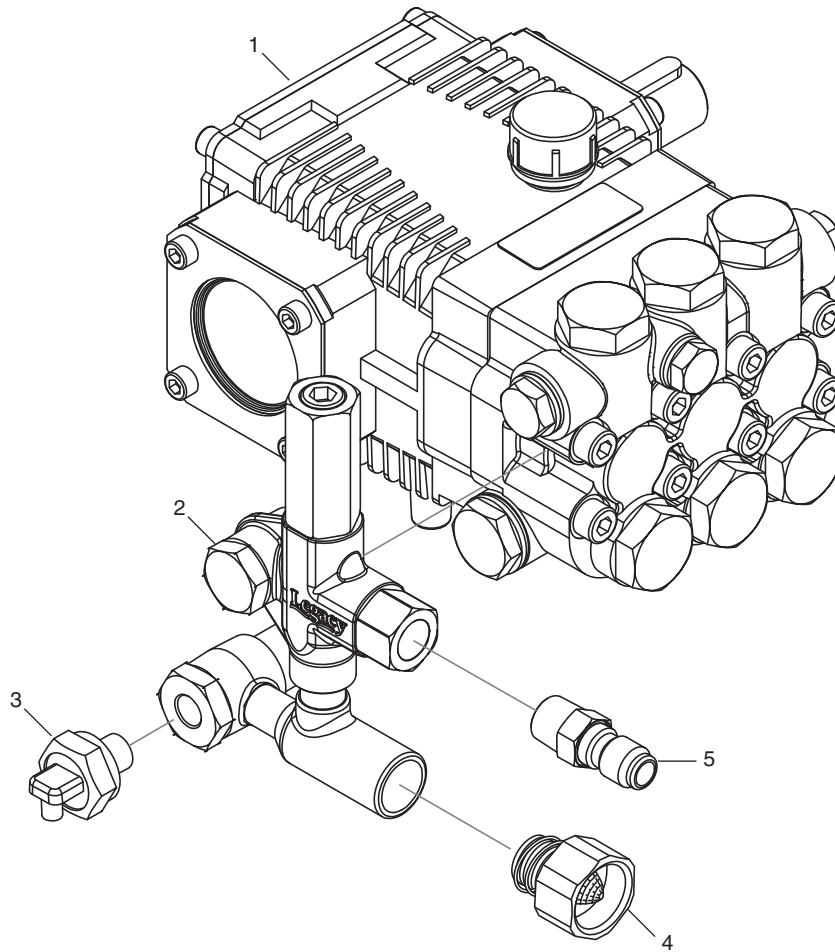
EXPLODED VIEW PARTS LIST (CONT)

ITEM	PART NO.	DESCRIPTION	QTY	ITEM	PART NO.	DESCRIPTION	QTY
1	8.750-580.0	Engine, Honda, GX390UT2QA2 (389 cc)	1	30	8.919-349.0	Al Base Long (389 cc)	1
	9.802-317.0	Engine, Honda, GX200UTQX2 (196 cc)	1		8.919-401.0	Al Base Short (196 cc)	1
2	8.917-978.0	Handle Support Assy Al Direct Drive	1	31	8.919-352.0	Under-Frame Slider	1
3	9.135-007.0	Rotary Tube-Joint	4	32	8.919-354.0	Slider Stiffener Long	1
4	8.917-976.0	Handle Assy Al Direct Drive	1	33		Pump Assy 2700 PSI (See M4035R Specs Pages)	1
5	8.750-303.0	Handle Stiffener Al	2			Pump Assy 3500 PSI (See D3030R Specs Pages)	1
6	9.802-402.0	Bushing, H X 24MM	1	34	8.919-356.0	Axle Spacer RH 2.0" (389 cc)	1
7	8.715-593.0	Pulley, 2BK 90 H (389 cc)	1		8.918-079.0	Axle Spacer Silver (196 cc)	1
	9.802-380.0	Pulley, BK 80 H (196 cc)	1	35	8.919-358.0	Axle Spacer Left 5.00"	1
8	9.802-399.0	Bushing, H X 1 (389 cc)	1	36	9.802-782.0	Collar, 5/8" Bore Shaft	2
	9.803-897.0	Bushing, H X 3/4 (196 cc)	1	37	9.196-307.0	1/4-20 x 1-1/2 GR 2 Hex Bolt Zinc	4
9	8.715-576.0	Pulley, 2BK 32 H (389 cc)	1	38	9.197-010.0	1/4-20 Nylon Insert Lock Nut	4
	9.802-379.0	Pulley, BK 36 H (196 cc)	1	39	9.177-204.0	Sleeve rubber	4
10	9.802-740.0	Bolt, 1/2 X 3-1/2", NC HH(615595)	1	40		Quick Connect Nozzle Kit (389 cc)	1
11	8.718-980.0	Washer, 5/16" (389 cc) (196 cc)	41 47		8.712-345.0	▲ Nozzle, SAQCMEG 0004, RED	
12	9.803-114.0	Retainer Bracket, Handle, Black	2		8.712-346.0	▲ Nozzle, SAQCMEG 1504, YELLOW	
13	9.802-816.0	Washer, 7/16", Lock Split Ring (389 cc)	4		8.712-347.0	▲ Nozzle, SAQCMEG 2504, GREEN	
	9.802-813.0	Washer, 5/16", Lock Split Ring (196 cc)	4		8.712-348.0	▲ Nozzle, SAQCMEG 4004, WHITE	
14	9.802-776.0	Nylon Insert Nut 5/16" (389 cc) (196 cc)	27 31			Quick Connect Nozzle Kit (196 cc)	1
15	9.802-716.0	Bolt, 5/16" X 2"	10		8.712-331.0	▲ Nozzle, SAQCMEG 0003, Red	
16	9.197-003.0	3/8-16 Nylon Insert (389 cc) (196 cc)	6 2		8.712-333.0	▲ Nozzle, SAQCMEG 1503, Yellow	
17	9.196-041.0	Hex Head Bolt 3/8-16 X 1-3/4 (389 cc) (196 cc)	7 2		8.712-334.0	▲ Nozzle, SAQCMEG 2503, Green	
18	8.918-437.0	Holder Wand Left Silver	1		8.712-335.0	▲ Nozzle, SAQCMEG 4003, White	
19	9.136-502.0	Knob	2	41	8.718-625.0	Bolt, 5/16"-18X3/4", NC Crrge	1
20	9.802-793.0	Nut, Cage, 1/4" X 16 GA	5	42	9.802-712.0	Bolt, 5/16"-18 X 1-3/4", NC Carriage	1
21	8.711-907.0	Wheel & Tire, 6.5" Steel Rim, 12.5 Tire (389 cc)	2	43	8.750-247.0	Trigger Gun Model M407	1
	9.802-270.0	Wheel & Tire Assy, 10" Steel Rim (196 cc)	2	44	8.919-348.0	Al Foot Belt Drive (389 cc)	1
22	9.802-710.0	Screw 5/16" x 1" NC	10		8.919-421.0	Al Foot Belt Drive Short(196 cc)	1
23	9.802-767.0	Screw, 3/8" X 3/4"	2	45	8.908-395.0	Axle, 5/8" x 26.80" (389 cc)	1
24	9.802-781.0	Nut, 3/8" NC, Whiz Loc Flange	2		8.919-422.0	Axle Short Base Al 24" (196 cc)	1
25	9.802-811.0	Washer, 3/8" X 1-1/2" (389 cc)	4	46	8.783-040.0	Wand 44" Zinc Plated, Handle & Coupler (389 cc)	1
26	9.802-066.0	Pad Soft Rubber	2		8.783-039.0	Wand 30" Zinc Plated, Handle & Coupler (196 cc)	1
27	8.718-684.0	Bolt, 3/8" X 5"	2				
28	9.802-754.0	Screw, 1/4" x 1/2" NC	5				
29	8.919-712.0	Aluminium Bumper	1				

EXPLODED VIEW PARTS LIST (CONT)

ITEM	PART NO.	DESCRIPTION	QTY	ITEM	PART NO.	DESCRIPTION	QTY
47	8.916-740.0	Hose, 3/8" x 50', 1 Wire Tuff-Skin (BGA Models)	1	76	8.783-036.0	Label, Warning Pictogram	1
	8.739-011.0	Hose, 3/8" x 50', 1 Wire Tuff-Skin (BXA Models)	1	77	8.750-809.0	Label Operation Warn Trilingual Small	1
	8.739-021.0	Hose, 3/8" x 50', 1 Wire Tuff-Skin (HD Models)	1	78	8.783-038.0	Label, Universal DB Rating, Ear Protection	1
	8.739-026.0	Hose, 3/8" x 50', 1 Wire Tuff-Skin (PGA Models)	1	79	9.800-008.0	Label, Danger Cool Engine	1
48	9.802-417.0	Belt, BX38 (389 cc)	2	80	8.751-861.0	Label, Long (HD Models) (389 cc)	1
	8.715-695.0	Belt, BX34 (196 cc)	1		8.751-862.0	Label, Short (HD Models) (196 cc)	1
49	8.751-212.0	Bolt M10 X 25MM (389 cc)	4		8.750-465.0	Label, Guard (PGA Models)	1
	9.802-742.0	Bolt, 8mm x 20mm (196 cc)	4		8.704-654.0	Label, Logo Red (BXA Models)	1
50	8.919-423.0	Axle Holder Al Frame	2		8.900-870.0	Label, Logo Die-Cut (BGA Models)	1
51	9.802-810.0	Washer Flat 5/8"	2	81	8.901-219.0	Label, ETL, Mty, UL 1776	1
52	8.919-350.0	Al Back Beltguard Long (389 cc)	1	82	9.800-034.0	Label, Clear Lexan 4.3" X 5.5"	1
	8.919-402.0	Al Back Beltguard Short(196 cc)	1	83	8.750-284.0	Label Name Plate (HD Models)	1
53	8.919-351.0	Front Beltguard Long (389 cc)	1		8.750-285.0	Label NamePlate (PGA Models)	1
	8.919-403.0	Front Beltguard Short (196 cc)	1		8.750-286.0	Label Name Plate (BXA Models)	1
54	9.802-071.0	Al Trim, 750 B2 X 1/16	4.5 ft.		8.750-714.0	Label Name Plate (BGA Models)	1
55	8.919-796.0	Hose Hanger Al Frames	1	84	9.196-021.0	Socket Head Screw, 5/16"-24 x1.25" (196 cc)	1
56	9.802-809.0	Washer, 1/2" Flat	3	85	9.802-713.0	Bolt, 5/16" X 1-1/2" (196 cc)	1
57	9.803-551.0	Screw, 5/16" x 3/4"	3	86	9.198-014.0	Washer 21/64 X 1" (196 cc)	1
58	9.802-778.0	Nut, Whiz Loc 5/16 Flange	3	87	8.919-425.0	Al Muffler Deflector (196 cc)	1
59	8.932-993.0	Cushion, Pump	2			▲ Not Shown	
60	9.802-819.0	Washer, 7/16" x 2 1/2"	2				
61	9.802-958.0	Key, 0.185 SQR X 1.75" (196 cc)	1				
	9.802-959.0	Key, 0.247 SQR X 2.125" (389 cc)	1				
62	8.718-779.0	Scew, 4mm X 6 mm (196 cc)	2				
63	8.919-592.0	Suspension Bracket	2				
64	9.802-817.0	Washer, 3/8" x 1" (389 cc)	13				
65	9.802-053.0	Bushing, Fuel Line, Rubber	1				
66	8.736-004.0	Rubber Washer	1				
67	8.719-091.0	Spring, Foot, Compression	2				
68	8.706-557.0	Bellows, Leg (BOOT)	2				
69	8.719-954.0	Tube, PC Foot Bolt	2				
70	9.802-166.0	Coupler, 3/8" Socket, Female, Brass	1				
71	9.800-006.0	Label, Hot/Caliente W/Arrows	1				
72	8.917-015.0	Label, Regulation 4442.6	1				
73	8.901-137.0	Label, Beltguard Warning	1				
74	8.930-124.0	Label, Intended For Outdoor Use-Mexico	1				
75	8.783-034.0	Label, Quick Start Guide	1				

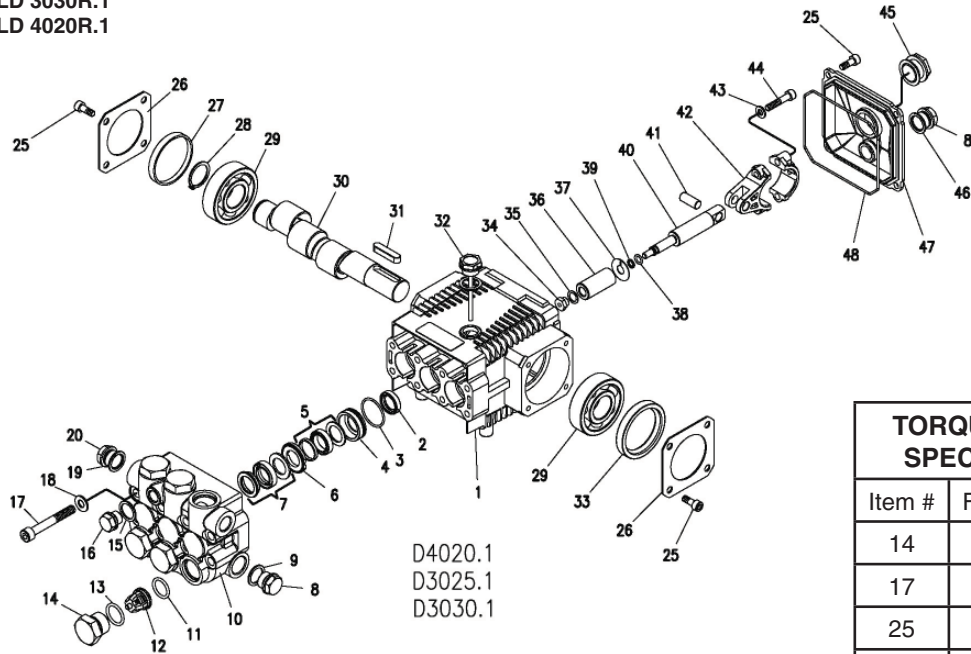
D3030R.1 PUMP ASSEMBLY EXPLODED VIEW



ITEM	PART NO.	DESCRIPTION	QTY
1	9.804-006.0	Pump, KD3030R.1, 3@3000,1650 RPM	1
	8.904-857.0	Pump, LD3030R.1, 3@3000, 1650 RPM	1
	8.904-730.0	Pump, HD3030R.1, 3@3000, 1650 RPM	1
2	9.175-018.0	UU1 3500PSI, Universal Unloader (SPARE)	1
3	9.804-025.0	Pump Protector, 1/4" 145 Deg	1
4	9.802-146.0	Swivel, 1/2" MP x 3/4" GHF W/Strainer	1
5	9.802-171.0	Coupler, 3/8" Plug, Male	1

D.1 PUMP EXPLODED VIEW

8.725-169.0 LD 3025R.1
 8.904-857.0 LD 3030R.1
 8.904-856.0 LD 4020R.1



D4020.1
 D3025.1
 D3030.1

TORQUE SPECS	
Item #	Ft.-lbs
14	65
17	18
25	7.6
34	7
44	13

LD.1 PUMP EXPLODED VIEW PARTS LIST

ITEM	PART NO.	DESCRIPTION	QTY	ITEM	PART NO.	DESCRIPTION	QTY
1	9.803-938.0	Crankcase	1	11*	9.803-947.0	O-Ring Ø1.78 x 15.54	6
2*	See Kits Below	Plunger Oil Seal	3	12*	See Kits Below	Valve Assembly	6
3*	See Kits Below	O-Ring Ø1.78 x 28.30	3	13*	9.803-948.0	O-Ring Ø2.62 x 18.77	6
4*	See Kits Below	Pressure Ring 15mm (3030)	3	14	9.803-949.0	Valve Plug	6
	See Kits Below	Pressure Ring 18mm (4020, 3025)	3	15	9.803-950.0	Copper Washer 1/4	1
5*	See Kits Below	U-Seal, 15mm (3030)	3	16	9.803-951.0	Brass Plug G1/4	1
	See Kits Below	U-Seal, 18mm (4020, 3025)	3	17	9.803-952.0	Manifold Stud Bolt	8
6*	See Kits Below	Intermediate Ring 15mm (3030)	3	18	9.802-884.0	Washer	8
	See Kits Below	Intermediate 18mm (4020, 3025)	3	19	9.803-198.0	Copper Washer 3/8	1
7*	See Kits Below	Intermed. Ring 15mm (3030)	3	20	9.802-925.0	Brass Plug 3/8	2
	See Kits Below	Intermed. Ring 18mm (4020, 3025)	3	25	9.802-939.0	Screw	12
8	9.802-926.0	Brass Plug 1/2"	1	26	9.803-953.0	Bearing Cover	2
9	9.803-199.0	Copper Washer 1/2"	1	27	9.803-954.0	Bearing Seal	1
10	9.803-946.0	Manifold Housing	1	28	9.802-914.0	Snap Ring	1
				29	9.803-955.0	Ball Bearing	2
				30	9.803-956.0	Crankshaft	1
				31	9.803-167.0	Crankshaft Key	1
				32	9.803-957.0	Oil Dipstick	1

LD.1 PUMP EXPLODED VIEW PARTS LIST

ITEM	PART NO.	DESCRIPTION	QTY
33	8.933-010.0	Crankshaft Seal	1
34*	See Kits Below	Plunger Nut	3
35*	See Kit Below	Copper Spacer	3
36*	See Kits Below	Plunger, 15mm (3030)	3
	See Kits Below	Plunger, 18mm (4020, 3025)	3
37*	See Kits Below	Copper Spacer	3
38*	See Kits Below	O-Ring Ø1.78 x 5.28	3
39*	See Kits Below	Teflon Ring	3
40*	See Kits Below	Plunger Rod	3
41	9.803-965.0	Connecting Rod Pin	3
42	9.803-966.0	Connecting Rod	3
43	9.803-218.0	Spring Washer	6
44	8.933-020.0	Connecting Rod Screw	6
45	9.803-202.0	Sight Glass	1
46	9.803-197.0	Gasket	1
47	9.803-968.0	Crankcase Cover	1
48	9.803-969.0	O-Ring Ø2.62 x 107.62	

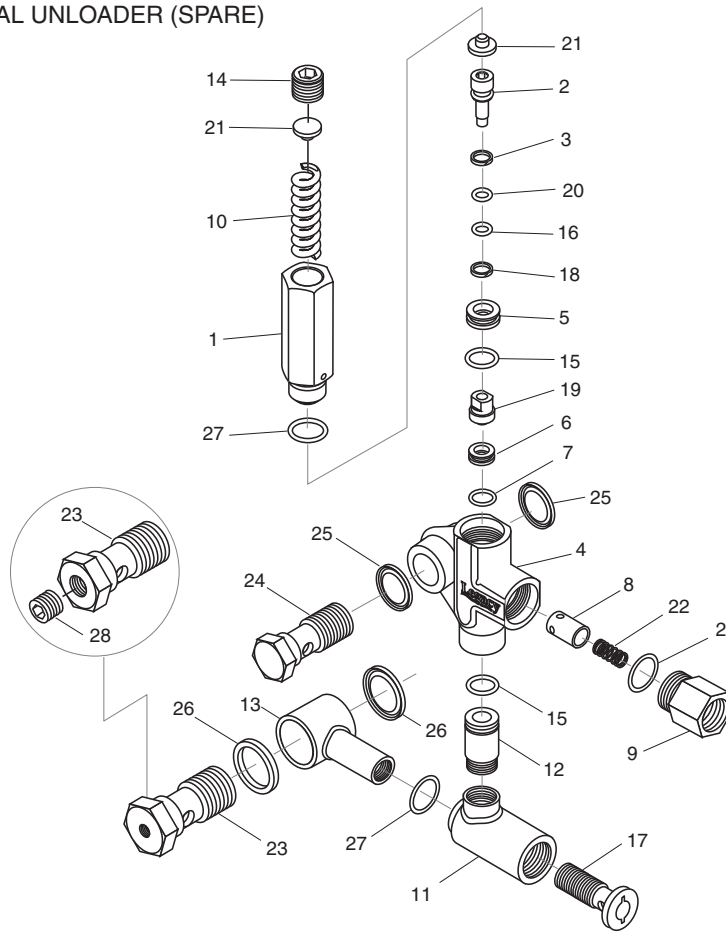
* Available in kit (See below)

REPAIR KIT NUMBER	8.725-354.0	8.725-356.0	8.725-355.0	8.725-357.0	9.803-934.0	9.803-935.0	9.803-936.0	9.803-937.0
Kit Description	Plunger Seal 15mm D-3030	Plunger Seal 18mm D-3025 D-4020	Complete Seal Packing, 15mm D-3030	Complete Seal Packing, 18mm D-3025 D-4020	Plunger 15mm D-3030	Plunger 18mm D-3025 D4020	Complete Valve	Plunger Oil Seals
ITEM NUMBERS INCLUDED	3, 5, 7	3, 5, 7	3, 4, 5, 6, 7	3, 4, 5, 6, 7,	34, 35, 36, 37, 38	34, 35, 36, 37, 38	11, 12, 13	2
NUMBER OF CYLINDERS KIT WILL SERVICE	3	3	1	1	1	1	6	3

UU1 UNLOADER EXPLODED VIEW

9.175-018.0

UU1 3500PSI, UNIVERSAL UNLOADER (SPARE)



UU1 UNLOADER EXPLODED VIEW PARTS LIST

ITEM	PART #	DESCRIPTION	KIT	QTY	ITEM	PART #	DESCRIPTION	KIT	QTY
1	8.751-394.0	Piston Housing	D	1	17	9.149-006.0	Sliding Connector Guide		1
2		Piston	C, D	1	18		O-Ring Backup 6 x 1.45 x 1.68	A, D	1
3		Piston O-Ring Back Up	A, D	1	19		Ball Housing Assy	C, D	1
4	8.749-796.0	Main Block		1	20		O-Ring 6.75 x 1.78 BN80	A, D	1
5	9.152-372.0	Piston Ring	D	1	21		Spring Seat	C, D	2
6		Ball Seat	C, D	1	22		Plunger Spring	B	1
7		O-Ring 10.5 ID x 1.5 CS	A,C,D	1	23	8.917-699.0	Banjo Bolt 1/2" Short		1
8		Plunger	B	1		8.917-700.0	Banjo Bolt 1/2"-1/4" NPT Short		1
9	9.152-016.0	Plunger Housing		1	24	8.917-698.0	Banjo Bolt 3/8" Short		1
10		Bypass Spring	C, D	1	25	9.802-893.0	Seal Washer 3/8"		2
11	9.149-001.0	Low Pressure Port		1	26	9.803-921.0	Seal Washer 1/2"		2
12	9.152-017.0	Sliding Connector, 30mm		1		9.802-893.0	Seal Washer 3/8"		2
	8.762-005.0	Sliding Connector, 40mm, Long		1	27		O-Ring 15 ID x 2CS	A,B,D	3
13	9.149-002.0	Sliding Connector H 1/2"		1	28	8.706-865.0	Plug, 1/4" Countersunk		1
	9.149-005.0	Sliding Connector H 3/8"		1	Kit A	9.104-038.0	O-Ring Repair Kit		
14	9.196-011.0	Plug 5/8 -18 UNF	D	1	Kit B	9.104-039.0	Outlet Kit		
15		O-Ring 12 ID x 2 CS	A, D	2	Kit C	9.104-040.0	Stem Basic Kit		
16		O-Ring 6 ID X 2 CS	A, D	1	Kit D	8.920-045.0	UU1 Complete Stem Kit		