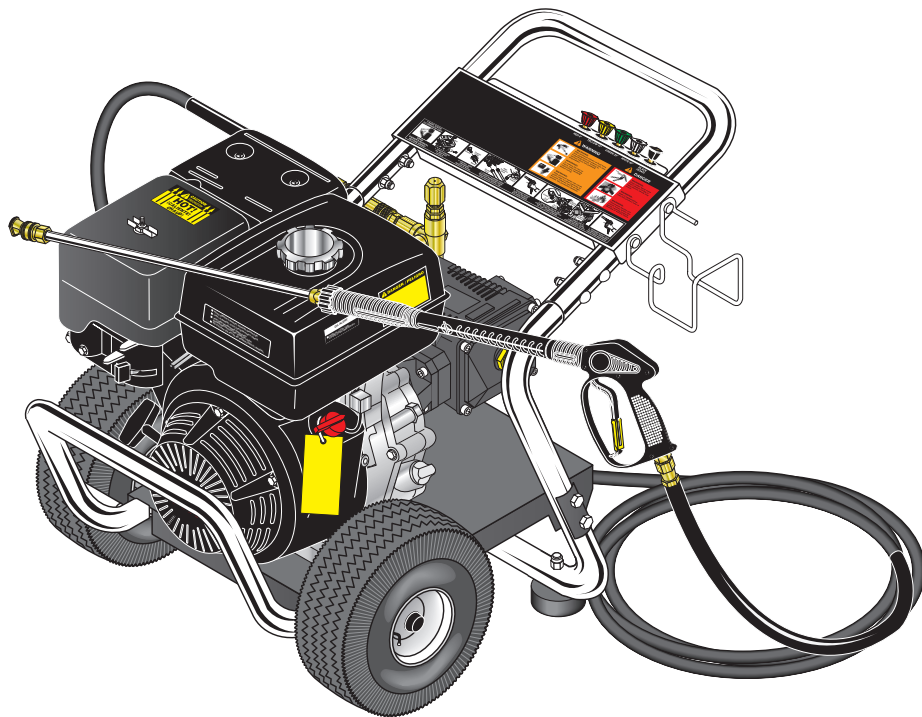




KÄRCHER

OPERATOR'S MANUAL

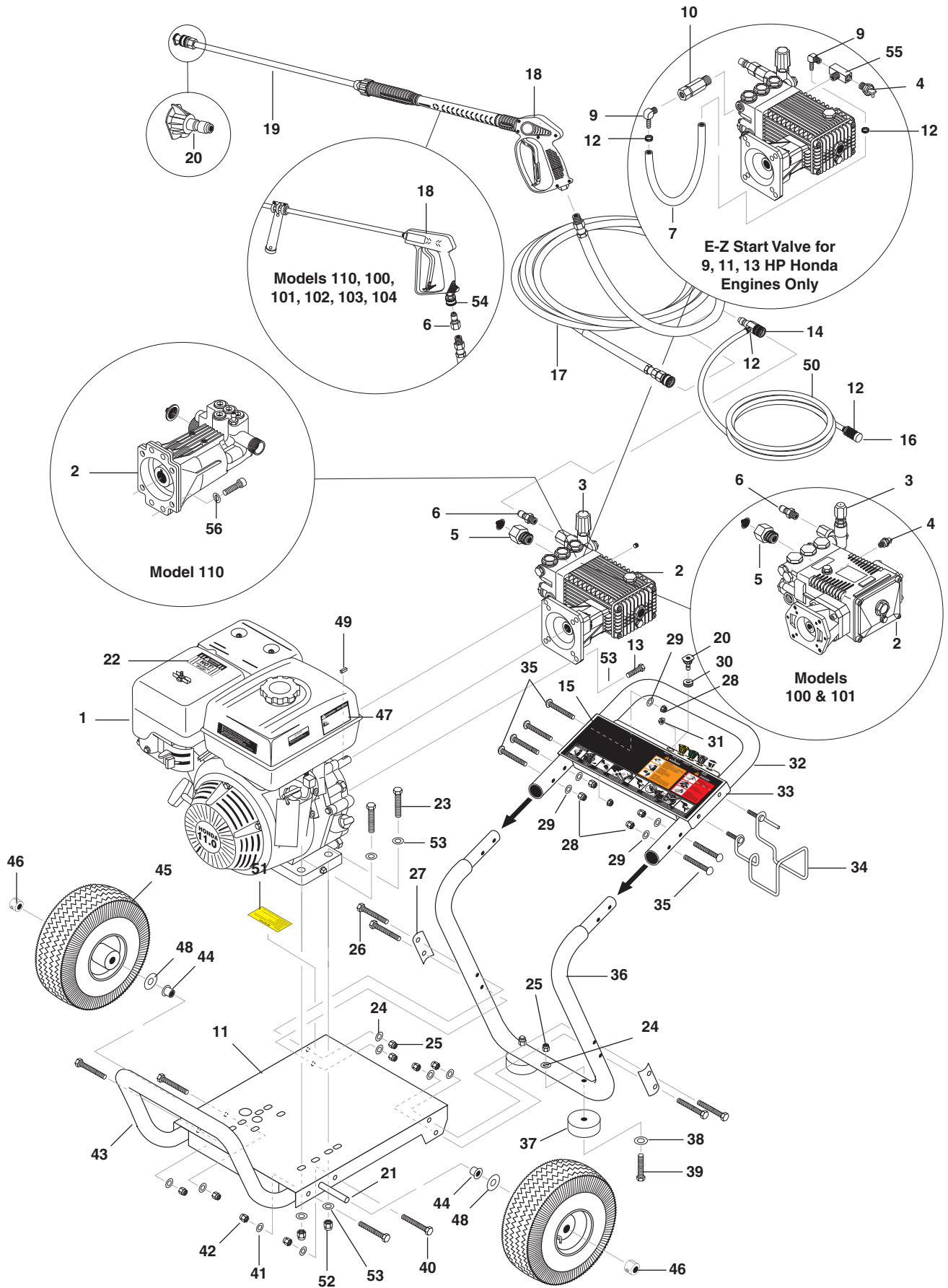


<u>MODEL #</u>	<u>ORDER #</u>	<u>MODEL #</u>
HD 2.3/24 P	1.575-100.0	DG-232437
HD 2.5/27 P	1.575-101.0	DG-252737
HD 3.0/30 P	1.575-102.0	DG-303037
HD 3.5/32 P	1.575-103.0	DG-353237
HD 3.8/35 P	1.575-104.0	DG-383537
HD 2.3/23 P	1.575-110.0	DG-232336

To locate your local Kärcher Commercial Pressure Washer Dealer nearest you,
please visit www.karchercommercial.us

9.800-082.0

EXPLODED VIEW



EXPLODED VIEW PARTS LIST

ITEM	PART NO.	DESCRIPTION	QTY
1		Engine, See Specifications Page	
2		Pump, See Specifications Page	
3		Unloader, See Specifications Page	
4	9.804-025.0	Pump Protector, 1/4" 145° (100, 101)	1
	8.707-256.0	Pump Protector, 1/2" PTP (102, 104, 103)	1
5	9.802-146.0	Swivel, 1/2" MP x 3/4" GHF (100, 101, 102, 104, 103)	1
6	9.802-171.0	Nipple, 3/8" x 3/8" NPT ST Fem (101)	1
	9.802-171.0	Nipple, 3/8" x 3/8" MPT Male (100, 102, 103, 104)	1
7	9.802-142.0	Hose, 1/4" Push-on (E-Z-Start, 9 HP, 11 HP, 13 HP Honda)	14 in
8	8.707-182.0	▲ Coupler, Twist Connect, M22-F x 3/8" FNPT (232336 and 23326)	1
9	9.802-142.0	Hose, Barb, 1/4" Barb x 1/8" MP, 90° (E-Z Start)	1 (11 HP, 13 HP Honda) 2
	8.706-958.0	Hose Barb, 1/4" Barb x 1/4" Pipe (9 HP)	1
10	9.802-190.0	Valve, E-Z Start 3/8" MPT x 1/8" FPT(9HP, 11HP, 13HP Honda)	1
11	9.803-126.0	Base, CW Direct, Black	1
12	9.802-210.0	Clamp, Hose, (E-Z Start, 9 HP, 11 HP, 13 HP Honda)	4 (5.5HP, 6HP) 2
13	9.802-711.0	Bolt, 5/16-24" x 1" NF, HH	4
	9.802-722.0	Bolt, 3/8" x 1-1/4" NC, HH (9 HP, 11 HP, 13 HP)	4
	9.802-707.0	Bolt, 5/16"-24 x 3/4"	4
14	9.802-216.0	Injector, Detergent, Assembly All Models Except (110)	1
	9.802-216.0	Injector, Chemical, Non-Adjust	1
	8.707-057.0	Strainer, Plastic, 1/4" Hose Barb	1
	9.802-251.0	Tube, 1/4" x 1/2" Clear Vinyl	6 ft.
15	9.800-723.0	Label, Instructions	1
16	9.802-160.0	Strainer, Plastic, 1/4" Hose Barb	1
17		Hose, High Pressure, See Specifications Page	
18	9.802-223.0	Spray Gun, SK2, 3/8" Inlet, Lance W/M22CPLR	1
	8.711-348.0	Spray Gun, AP 1000	1
19	9.802-220.0	Wand, 18" M22 x 1/4" QC	1
	9.802-219.0	Wand Assy, Side Grip w/1/4" Coupler	1

ITEM	PART NO.	DESCRIPTION	QTY
20		Nozzle Size, See Page 19 For Proper Size	
	4-12803000	Nozzle, 3.0 0° Red	1
	4-12803015	Nozzle, 3.0 15° Yellow	1
	4-12803025	Nozzle, 3.0 25° Green	1
	4-12803040	Nozzle, 3.0 40° White	1
	4-12803500	Nozzle, 3.5 0° Red	1
	4-12803515	Nozzle, 3.5 15° Yellow	1
	4-12803525	Nozzle, 3.5 25° Green	1
	4-12803540	Nozzle, 3.5 40° White	1
	4-12804000	Nozzle, 4.0 0° Red	1
	4-12804015	Nozzle, 4.0 15° Yellow	1
	4-12804025	Nozzle, 4.0 25° Green	1
	4-12804040	Nozzle, 4.0 40° White	1
	4-16540	Nozzle, Compl, QCEM-6540, Brass (All Models)	1
21	9.803-097.0	Axle, 5/8" x 20.125" Long	1
22	9.800-006.0	Label, HOT	1
23	9.802-713.0	Bolt, 5/16" x 1-1/2", NC HH (5 HP, 5.5 HP, 6.5 HP)	4
	9.802-727.0	Bolt, 3/8" x 1-3/4" Tap (9 HP, 11 HP, 13 HP)	4
24	9.802-807.0	Washer, 3/8" SAE, Flat	6
25	9.802-779.0	Nut, 3/8" ESNA, NC	6
26	9.802-728.0	Bolt, 3/8" x 2" NC, HH	4
27	9.803-114.0	Retainer Bracket, Handle, Black	2
28	9.802-773.0	Nut, 1/4" ESNA, NC	6
29	9.802-802.0	Washer, 1/4" Flat	6
30	9.802-064.0	Grommet, Rubber, Nozzle Holder,	5
31	9.802-778.0	Nut, 5/16" Flange, Whiz Loc	2
32	9.803-119.0	Handle, Grab, Chrome	1
33	9.803-126.0	Plate, Warning, Black	1
34	9.803-098.0	Hanger, Hose/Wand	1
35	9.802-706.0	Bolt, 1/4"-20 x 1-3/4", Carriage, Zinc	6
36	9.803-119.0	Handle, Lower Grab, Chrome	1
37	9.802-066.0	Pad, Soft Rubber	2
38	9.802-817.0	Washer, 3/8" x 1" Steel	2
39	9.802-729.0	Bolt, 3/8" x 2-1/4" HH, Grd. 5	2
40	9.802-804.0	Bolt, Carriage, 5/16" x 1-3/4"	4
41	9.802-804.0	Washer, 5/16" Flat	4
42	9.802-776.0	Nut, 5/16" ESNA, NC	4
43	9.803-123.0	Handle, Bumper, Chrome	1
44	9.802-103.0	Bushing, 5/8" Snap	2
45	9.802-270.0	Wheel & Tire Assy, 4" Steel Rim w/Tube	2
46	9.802-782.0	Collar, 5/8" Bore Shaft	2
47	9.800-008.0	Label, Cool Engine Before Filling	1
48	9.802-810.0	Washer, 5/8" Flat	2

EXPLODED VIEW PARTS LIST CONT.

ITEM	PART NO.	DESCRIPTION	QTY
49	9.802-958.0	Key, .185 Sqr x 1.75" (5 HP, 5.5 HP, 6.5 HP)	1
50	9.802-251.0	Tube, 1/4" x 1/2" Clear Vinyl	6 ft.
51	9.800-049.0	Label, Manufacturer's Cleaning Solution	1
52	9.802-776.0	Nut, 5/16" ESNA, NC (5 HP, 5.5 HP, 6.5 HP)	4
	9.802-779.0	Nut, 3/8" ESNA, NC (9 HP, 11HP, 13 HP)	4
53	9.802-804.0	Washer, 5/16" Flat (5 HP, 5.5 HP, 6.5 HP)	8
	9.802-807.0	Washer, 3/8" Flat (9 HP, 11 HP, 13 HP)	12
54	9.802-169.0	Coupler, 3/8" Male Brass	1
55	8.706-854.0	Tee, 1/4" Branch, Male	1
56	9.802-813.0	Lock Washer	4

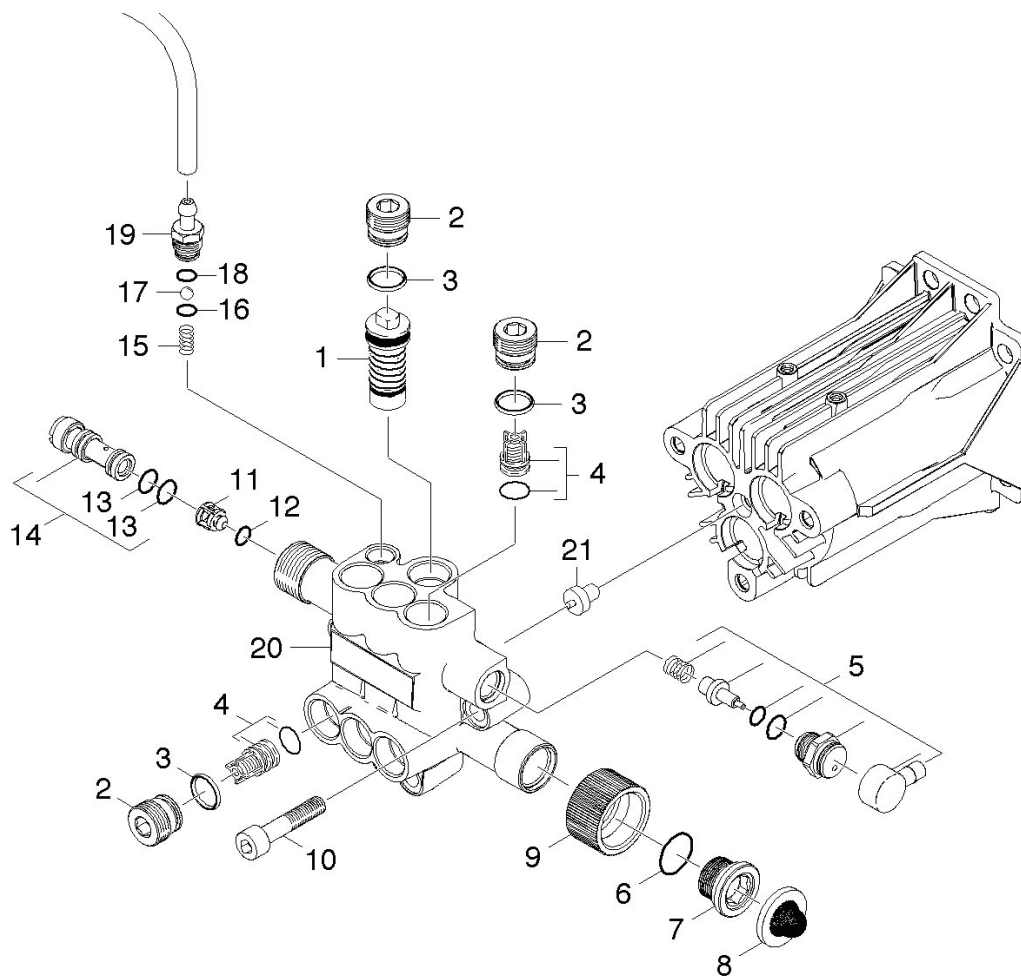
▲ Not Shown

SPECIFICATIONS

Machine Model	Pressure (GPM)	Nozzle (PSI) Size	Hose Part #	Pump Model	Pump Part #	Unloader Part #	Engine Hp	Engine Part #
1.575-100.0	2.3	2400 3.0	8.739-125.0	KG2530G	9.803-822.0	9.803-899.0	GC160 (5.5)	9.802-316.0
1.575-101.0	2.5	2700 3.0	8.739-125.0	KG2530G	9.803-822.0	9.803-899.0	GX200 (6.5)	9.802-317.0
1.575-102.0	3.0	3000 3.5	8.739-125.0	KG3035G1	9.804-034.0	9.803-899.0	GX270 (9)	9.802-315.0
1.575-104.0	3.8	3500 4.0	8.739-203.0	KS4040G	9.802-350.0	9.803-900.0	GX390 (13)	9.802-322.0
1.575-110.0	2.3	2300 3.0	8.739-125.0	2427G	9.120-032.0	9.803-900.0	GC160	9.802-316.0
1.575-103.0	3.8	3200 4.0	8.739-203.0	KS3540G1	9.802-349.0	9.803-900.0	GX390	9.802-316.0

PUMP EXPLODED VIEW AND PARTS LIST

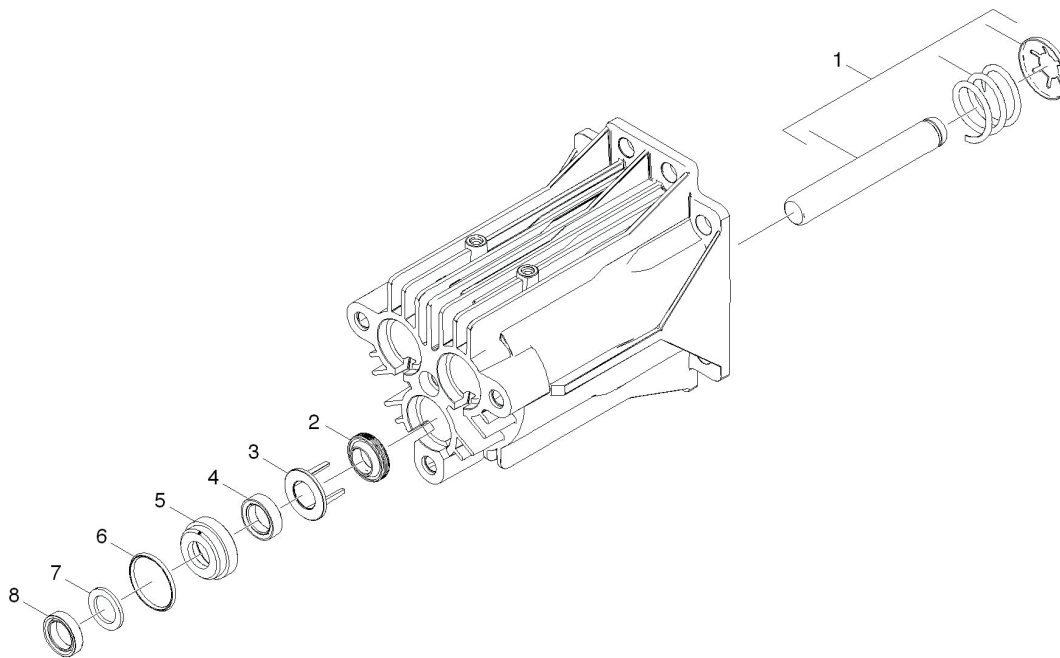
9.120-032.0



ITEM	PART #	DESCRIPTION	QTY
1	9.175-007.0	Unloader Assembly	1
2	9-154-036.0	M18 Pipe Plug	7
3	6.362-480.0	O-Ring Seal, 12.42 x 1.78	9
4	4-580-371.0	Valve Assembly	6
5	9.139-194.0	Spare Parts List, Set 2	1
6	6-362-634.0	O-Ring Seal, 15.6 x 1.78 NBR 70	1
7	9.134-019.0	Adapter, Male	1
8	9.181-005.0	Filter Seal-Hose Connector	1
9	9.155-013.0	Hose Connector, Female	1
10	7.306-075.0	Cylinder Head Screw M 8x 40-8.8-A2E ISO	3
11	5.584-091.0	Valve Pin Check Valve	1
12	6.362-851.0	O-Ring, d. 4 x 2 NBR 90	1
13	6.362-384.0	O-Ring Seal, 9.0 x 1.5	1
14	4.769-034.0	Nozzle Insert Only for Replacement	1
15	5.332-258.0	Helical Spring	1
16	6.362-175.0	O-Ring Seal, 5.28 x 1.78	1
17	7.401-909.0	Sphere 7 G40-1.4401 Din 5401	1
18	6.362-451.0	O-Ring Seal 8.0 x 1.0	1
19	5.443-448.0	Nipple Chemistry	1
20	9.135-004.0	Cylinder Head Machined	1
21	9.177-305.0	Molded Rubber End Cap	1

PUMP EXPLODED VIEW PARTS LIST

9.120-032.0 PISTON VIEW



ITEM	PART #	DESCRIPTION	QTY
1	9.139-193.0	Spare Parts List Set 1	3
2	6.365-393.0	Grooved Ring 12 x 20 x 4/6	3
3	9.134-016.0	Spacer, Oil Seal and Seal Housing	3
4	6.363-058.0	Grooved Ring	3
5	9.155-011.0	Housing, Low Pressure Seal	3
6	6.362-833.0	O-Ring Seal, 21.5 x 1.78	3
7	9.177-310.0	Back Ring High Pres Seal	3
8	9.177-301.0	High Pressure Seal	3