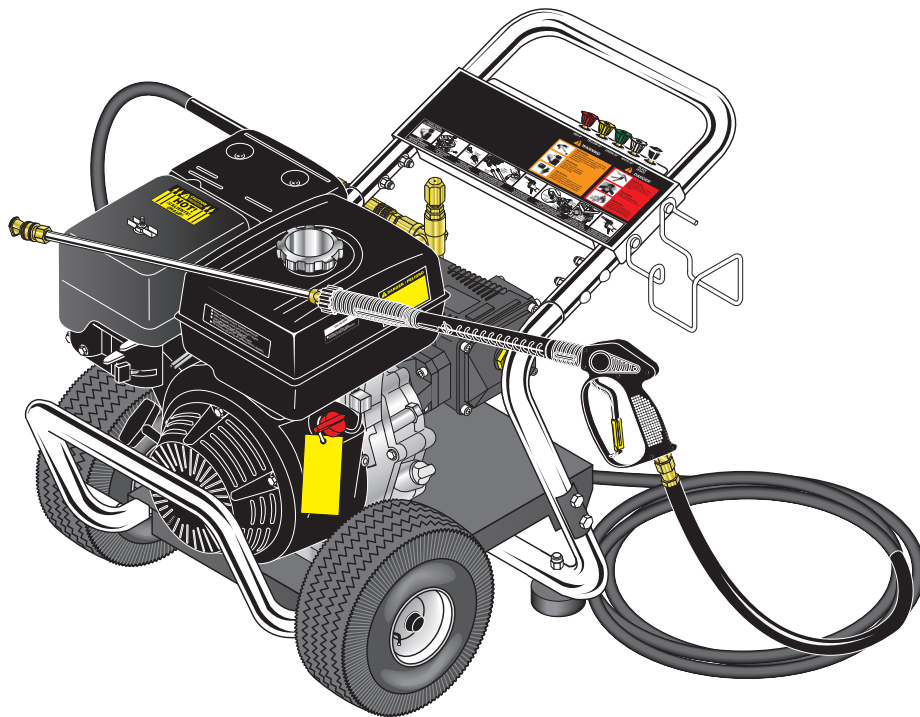




KÄRCHER

OPERATOR'S MANUAL

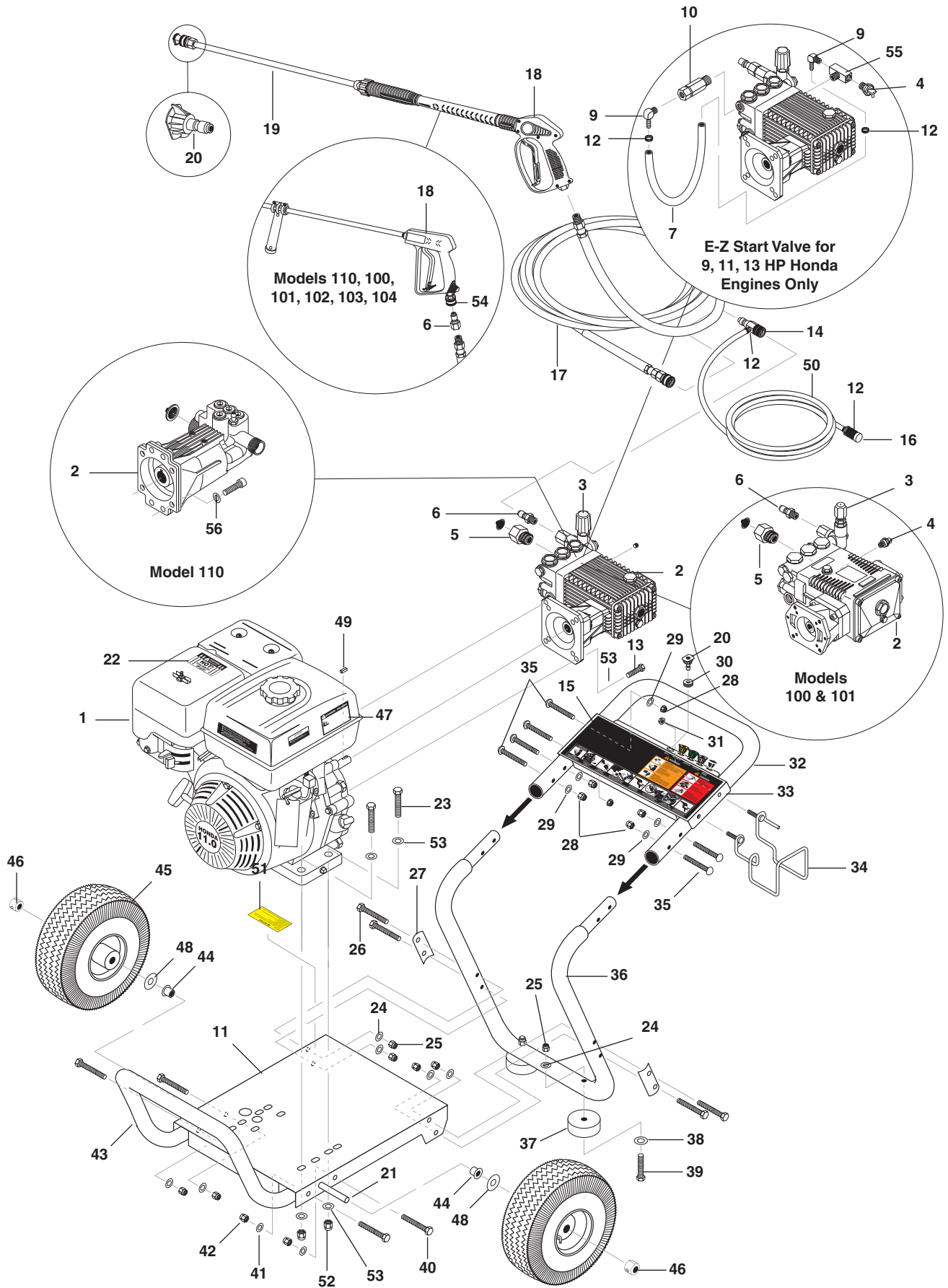


| <u>MODEL #</u> | <u>ORDER #</u> | <u>MODEL #</u> |
|----------------|----------------|----------------|
| HD 2.3/24 P | 1.575-100.0 | DG-232437 |
| HD 2.5/27 P | 1.575-101.0 | DG-252737 |
| HD 3.0/30 P | 1.575-102.0 | DG-303037 |
| HD 3.5/32 P | 1.575-103.0 | DG-353237 |
| HD 3.8/35 P | 1.575-104.0 | DG-383537 |
| HD 2.3/23 P | 1.575-110.0 | DG-232336 |

To locate your local Kärcher Commercial Pressure Washer Dealer nearest you,
please visit www.karchercommercial.us

9.800-082.0

EXPLODED VIEW



EXPLODED VIEW PARTS LIST

| ITEM | PART NO. | DESCRIPTION | QTY |
|------|-------------|--|--------------------------|
| 1 | | Engine, See Specifications Page | |
| 2 | | Pump, See Specifications Page | |
| 3 | | Unloader, See Specifications Page | |
| 4 | 9.804-025.0 | Pump Protector, 1/4" 145° (100, 101) | 1 |
| | 8.707-256.0 | Pump Protector, 1/2" PTP (102, 104, 103) | 1 |
| 5 | 9.802-146.0 | Swivel, 1/2" MP x 3/4" GHF (100, 101, 102, 104, 103) | 1 |
| 6 | 9.802-171.0 | Nipple, 3/8" x 3/8" NPT ST Fem (101) | 1 |
| | 9.802-171.0 | Nipple, 3/8" x 3/8" MPT Male (100, 102, 103, 104) | 1 |
| 7 | 9.802-142.0 | Hose, 1/4" Push-on (E-Z-Start, 9 HP, 11 HP, 13 HP Honda) | 14 in |
| 8 | 8.707-182.0 | ▲ Coupler, Twist Connect, M22-F x 3/8" FNPT (232336 and 23326) | 1 |
| 9 | 9.802-142.0 | Hose, Barb, 1/4" Barb x 1/8" MP, 90° (E-Z Start) | 1 (11 HP, 13 HP Honda) 2 |
| | 8.706-958.0 | Hose Barb, 1/4" Barb x 1/4" Pipe (9 HP) | 1 |
| 10 | 9.802-190.0 | Valve, E-Z Start 3/8" MPT x 1/8" FPT(9HP, 11HP, 13HP Honda) | 1 |
| 11 | 9.803-126.0 | Base, CW Direct, Black | 1 |
| 12 | 9.802-210.0 | Clamp, Hose, (E-Z Start, 9 HP, 11 HP, 13 HP Honda) | 4 (5.5HP, 6HP) 2 |
| 13 | 9.802-711.0 | Bolt, 5/16-24" x 1" NF, HH | 4 |
| | 9.802-722.0 | Bolt, 3/8" x 1-1/4" NC, HH (9 HP, 11 HP, 13 HP) | 4 |
| | 9.802-707.0 | Bolt, 5/16"-24 x 3/4" | 4 |
| 14 | 9.802-216.0 | Injector, Detergent, Assembly All Models Except (110) | 1 |
| | 9.802-216.0 | Injector, Chemical, Non-Adjust | 1 |
| | 8.707-057.0 | Strainer, Plastic, 1/4" Hose Barb | 1 |
| | 9.802-251.0 | Tube, 1/4" x 1/2" Clear Vinyl | 6 ft. |
| 15 | 9.800-723.0 | Label, Instructions | 1 |
| 16 | 9.802-160.0 | Strainer, Plastic, 1/4" Hose Barb | 1 |
| 17 | | Hose, High Pressure, See Specifications Page | |
| 18 | 9.802-223.0 | Spray Gun, SK2, 3/8" Inlet, Lance W/M22CPLR | 1 |
| | 8.711-348.0 | Spray Gun, AP 1000 | 1 |
| 19 | 9.802-220.0 | Wand, 18" M22 x 1/4" QC | 1 |
| | 9.802-219.0 | Wand Assy, Side Grip w/1/4" Coupler | 1 |

| ITEM | PART NO. | DESCRIPTION | QTY |
|------|-------------|--|-----|
| 20 | | Nozzle Size, See Page 19 For Proper Size | |
| | 4-12803000 | Nozzle, 3.0 0° Red | 1 |
| | 4-12803015 | Nozzle, 3.0 15° Yellow | 1 |
| | 4-12803025 | Nozzle, 3.0 25° Green | 1 |
| | 4-12803040 | Nozzle, 3.0 40° White | 1 |
| | 4-12803500 | Nozzle, 3.5 0° Red | 1 |
| | 4-12803515 | Nozzle, 3.5 15° Yellow | 1 |
| | 4-12803525 | Nozzle, 3.5 25° Green | 1 |
| | 4-12803540 | Nozzle, 3.5 40° White | 1 |
| | 4-12804000 | Nozzle, 4.0 0° Red | 1 |
| | 4-12804015 | Nozzle, 4.0 15° Yellow | 1 |
| | 4-12804025 | Nozzle, 4.0 25° Green | 1 |
| | 4-12804040 | Nozzle, 4.0 40° White | 1 |
| | 4-16540 | Nozzle, Compl, QCEM-6540, Brass (All Models) | 1 |
| 21 | 9.803-097.0 | Axle, 5/8" x 20.125" Long | 1 |
| 22 | 9.800-006.0 | Label, HOT | 1 |
| 23 | 9.802-713.0 | Bolt, 5/16" x 1-1/2", NC HH (5 HP, 5.5 HP, 6.5 HP) | 4 |
| | 9.802-727.0 | Bolt, 3/8" x 1-3/4" Tap (9 HP, 11 HP, 13 HP) | 4 |
| 24 | 9.802-807.0 | Washer, 3/8" SAE, Flat | 6 |
| 25 | 9.802-779.0 | Nut, 3/8" ESNA, NC | 6 |
| 26 | 9.802-728.0 | Bolt, 3/8" x 2" NC, HH | 4 |
| 27 | 9.803-114.0 | Retainer Bracket, Handle, Black | 2 |
| 28 | 9.802-773.0 | Nut, 1/4" ESNA, NC | 6 |
| 29 | 9.802-802.0 | Washer, 1/4" Flat | 6 |
| 30 | 9.802-064.0 | Grommet, Rubber, Nozzle Holder, | 5 |
| 31 | 9.802-778.0 | Nut, 5/16" Flange, Whiz Loc | 2 |
| 32 | 9.803-119.0 | Handle, Grab, Chrome | 1 |
| 33 | 9.803-126.0 | Plate, Warning, Black | 1 |
| 34 | 9.803-098.0 | Hanger, Hose/Wand | 1 |
| 35 | 9.802-706.0 | Bolt, 1/4"-20 x 1-3/4", Carriage, Zinc | 6 |
| 36 | 9.803-119.0 | Handle, Lower Grab, Chrome | 1 |
| 37 | 9.802-066.0 | Pad, Soft Rubber | 2 |
| 38 | 9.802-817.0 | Washer, 3/8" x 1" Steel | 2 |
| 39 | 9.802-729.0 | Bolt, 3/8" x 2-1/4" HH, Grd. 5 | 2 |
| 40 | 9.802-804.0 | Bolt, Carriage, 5/16" x 1-3/4" | 4 |
| 41 | 9.802-804.0 | Washer, 5/16" Flat | 4 |
| 42 | 9.802-776.0 | Nut, 5/16" ESNA, NC | 4 |
| 43 | 9.803-123.0 | Handle, Bumper, Chrome | 1 |
| 44 | 9.802-103.0 | Bushing, 5/8" Snap | 2 |
| 45 | 9.802-270.0 | Wheel & Tire Assy, 4" Steel Rim w/Tube | 2 |
| 46 | 9.802-782.0 | Collar, 5/8" Bore Shaft | 2 |
| 47 | 9.800-008.0 | Label, Cool Engine Before Filling | 1 |
| 48 | 9.802-810.0 | Washer, 5/8" Flat | 2 |

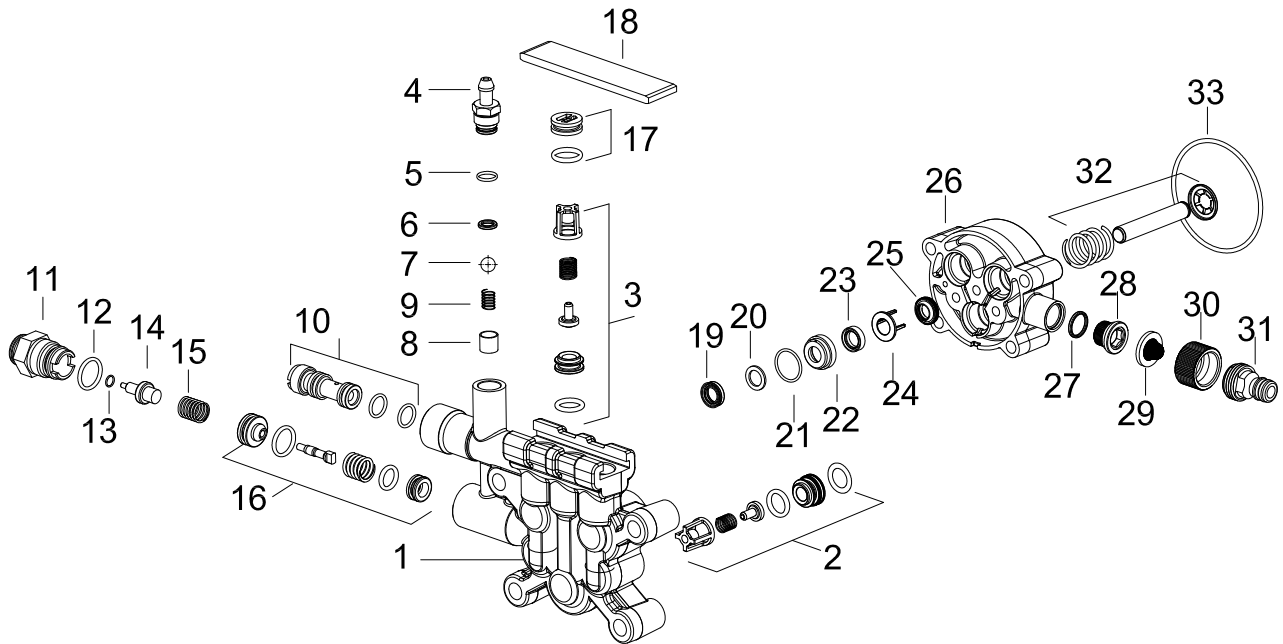
EXPLODED VIEW PARTS LIST CONT.

| ITEM | PART NO. | DESCRIPTION | QTY |
|------|-------------|--|-------|
| 49 | 9.802-958.0 | Key, .185 Sqr x 1.75" (5 HP, 5.5 HP, 6.5 HP) | 1 |
| 50 | 9.802-251.0 | Tube, 1/4" x 1/2" Clear Vinyl | 6 ft. |
| 51 | 9.800-049.0 | Label, Manufacturer's Cleaning Solution | 1 |
| 52 | 9.802-776.0 | Nut, 5/16" ESNA, NC (5 HP, 5.5 HP, 6.5 HP) | 4 |
| | 9.802-779.0 | Nut, 3/8" ESNA, NC (9 HP, 11HP, 13 HP) | 4 |
| 53 | 9.802-804.0 | Washer, 5/16" Flat (5 HP, 5.5 HP, 6.5 HP) | 8 |
| | 9.802-807.0 | Washer, 3/8" Flat (9 HP, 11 HP, 13 HP) | 12 |
| 54 | 9.802-169.0 | Coupler, 3/8" Male Brass | 1 |
| 55 | 8.706-854.0 | Tee, 1/4" Branch, Male | 1 |
| 56 | 9.802-813.0 | Lock Washer | 4 |

▲ Not Shown

PUMP EXPLODED VIEW AND PARTS LIST

8.920-004.0

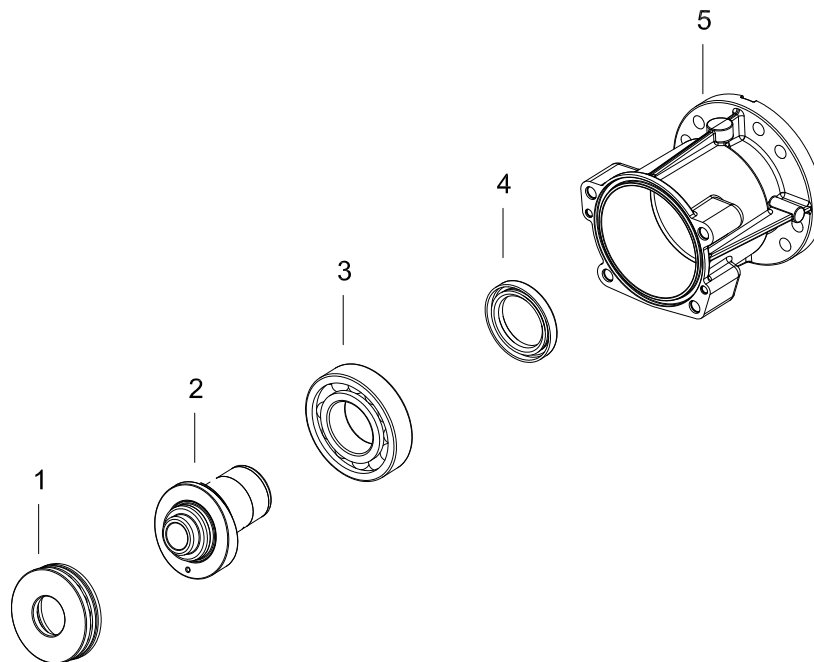


| ITEM | PART # | DESCRIPTION | QTY |
|------|-------------|---------------------------|-----|
| 1 | 8.762-010.0 | Cylinder Head | 1 |
| 2 | 9.175-004.0 | Valve Assy Horizontal | 3 |
| 3 | 9.139-371.0 | Spare Part List, Set 3 | 1 |
| 4 | 5.443-448.0 | Nipple Chemistry | 1 |
| 5 | 6.362-451.0 | O-Ring Seal 8.0 x 1.0 | 1 |
| 6 | 6-362-175.0 | O-Ring Seal, 5.28 x 1.78 | 1 |
| 7 | 7.401-909.0 | Sphere 7 G40 - 1.4401 | 1 |
| 8 | 5.110-714.0 | Sleeve | 1 |
| 9 | 5.332-258.0 | Helical Spring | 1 |
| 10 | 9.139-372.0 | Nozzle, INS 020/021 Pump | 1 |
| 11 | 9.184-018.0 | Outlet-Thermal Valve | 1 |
| 12 | 6.362-480.0 | O-Ring Seal, 12.42 x 1.78 | 1 |
| 13 | 7.362-507.0 | O-Ring Seal 8 x 2 NBR 90 | 1 |
| 14 | 6.413-403.0 | Thermo Valve Tin Coated | 1 |

| ITEM | PART # | DESCRIPTION | QTY |
|------|-------------|----------------------------|-----|
| 15 | 5.332-290.0 | Helical Spring | 1 |
| 16 | 9.175-005.0 | Unloader Assembly | 1 |
| 17 | 4.132-007.0 | Drain Plug Replacement | 1 |
| 18 | 5.003-062.0 | Plate | 1 |
| 19 | 9.177-301.0 | Hich Pressure Seal | 3 |
| 20 | 9.177-310.0 | Back Ring | 3 |
| 21 | 6.362-833.0 | O-Ring Seal 12.5 x 1.73 | 3 |
| 22 | 9.155-011.0 | Housing Low Pressure Seal | 3 |
| 23 | 6.363-058.0 | Grooved Ring | 3 |
| 24 | 9.134-016.0 | Spacer | 3 |
| 25 | 6.365-393.0 | Oil Sealing 12.20x4/6 | 3 |
| 26 | 9.133-007.0 | Piston Guide | 1 |
| 27 | 6.362-390.0 | O-Ring Seal 15.6 x 1.8 | 1 |
| 28 | 9.134-019.0 | Male Adapter | 1 |
| 29 | 9.181-005.0 | Filter Seal | 1 |
| 30 | 9.155-013.0 | Female House Conn | 1 |
| 31 | 9.178-005.0 | Adapter Garden | 1 |
| 32 | 9.139-370.0 | Spare Part List, Piston | 1 |
| 33 | 6.362-471.0 | O-Ring Seal 80.0x3.0 NBR70 | 1 |

PUMP EXPLODED VIEW PARTS LIST (CONT)

8.920-004.0 Housing View



| ITEM | PART # | DESCRIPTION | QTY |
|------|-------------|-------------------------|-----|
| 1 | 9.166-016.0 | Grooved Ball Bearing | 1 |
| 2 | 9.135-018.0 | Swash Plate Hor. | 1 |
| 3 | 9.165-356.0 | Ball Bearing No 6207 | 1 |
| 4 | 9.177-314.0 | Radial Seal 35 x 52 x 7 | 1 |
| 5 | 9.135-016.0 | Oil Housing | |

SPECIFICATIONS

| Machine Model | Pressure (GPM) | Nozzle (PSI) | Hose Size | Hose Part # | Pump Model | Pump Part # | Unloader Part # | Engine Hp | Engine Part # |
|---------------|----------------|--------------|-----------|-------------|------------|-------------|-----------------|-------------|---------------|
| 1.575-100.0 | 2.3 | 2400 | 3.0 | 8.739-125.0 | KG2530G | 9.803-822.0 | 9.803-899.0 | GC160 (5.5) | 9.802-316.0 |
| 1.575-101.0 | 2.5 | 2700 | 3.0 | 8.739-125.0 | KG2530G | 9.803-822.0 | 9.803-899.0 | GX200 (6.5) | 9.802-317.0 |
| 1.575-102.0 | 3.0 | 3000 | 3.5 | 8.739-125.0 | KG3035G1 | 9.804-034.0 | 9.803-899.0 | GX270 (9) | 9.802-315.0 |
| 1.575-104.0 | 3.8 | 3500 | 4.0 | 8.739-203.0 | KS4040G | 9.802-350.0 | 9.803-900.0 | GX390 (13) | 9.802-322.0 |
| 1.575-110.0 | 2.3 | 2300 | 3.0 | 8.739-125.0 | 2427G | 9.120-032.0 | 9.803-900.0 | GC160 | 9.802-316.0 |
| 1.575-103.0 | 3.8 | 3200 | 4.0 | 8.739-203.0 | KS3540G1 | 9.802-349.0 | 9.803-900.0 | GX390 | 9.802-316.0 |