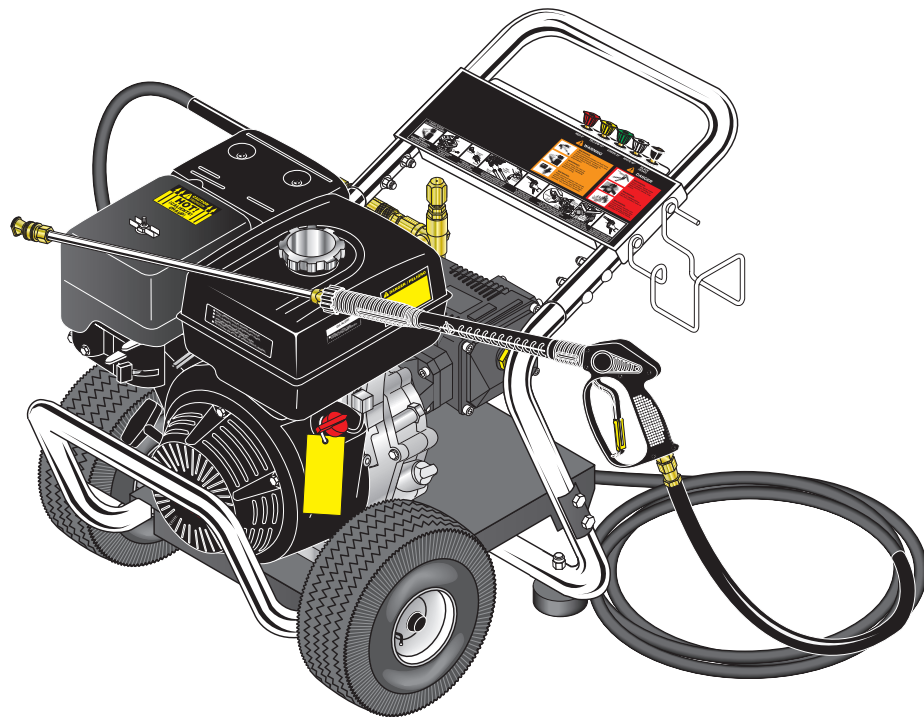




# KÄRCHER

## OPERATOR'S MANUAL



**MODEL HD 2.3/24 P - 1.575-100.0**

**MODEL HD 2.5/27 P - 1.575-101.0**

**MODEL HD 3.0/30 P - 1.575-102.0**

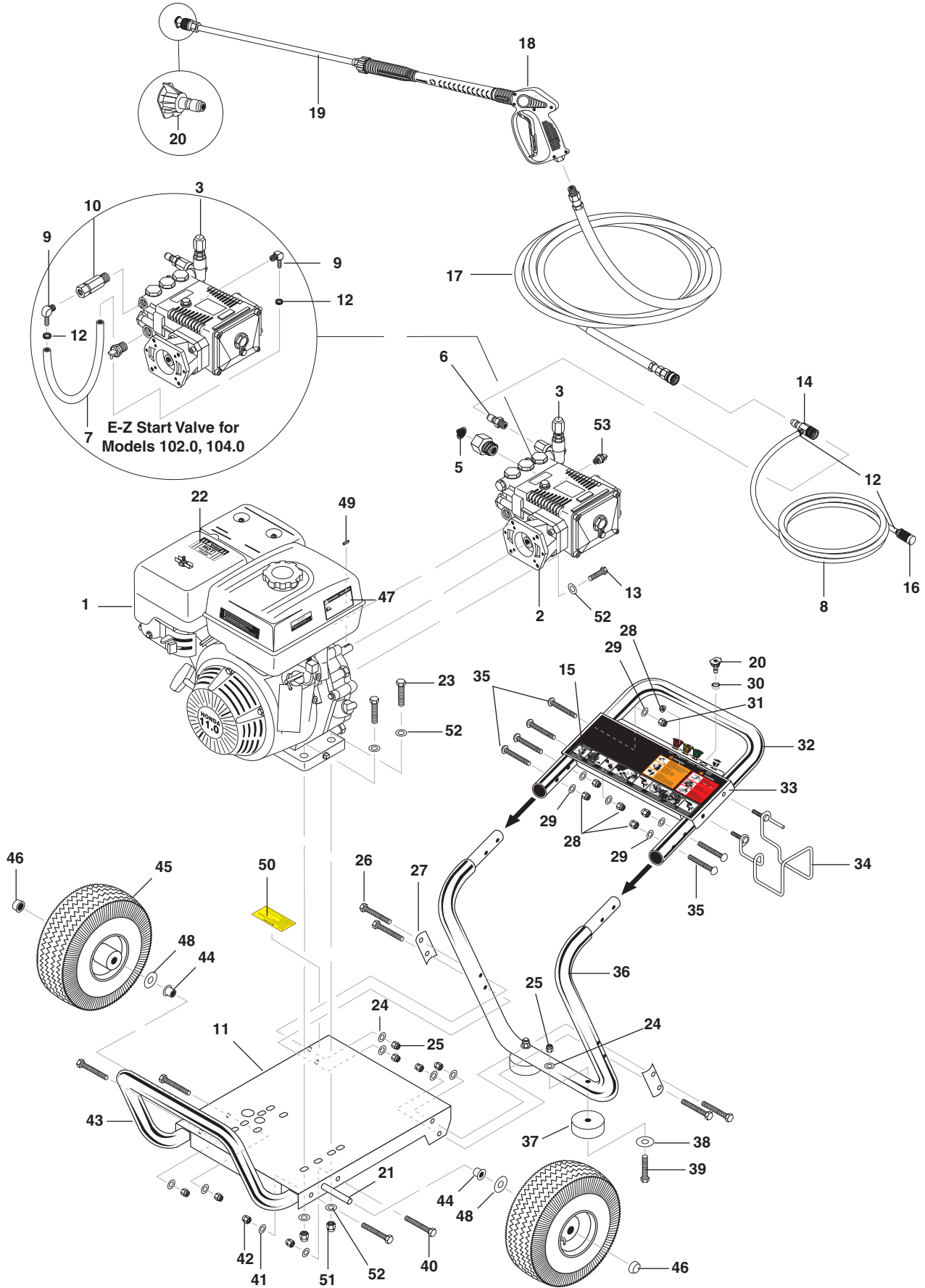
**MODEL HD 3.8/35 P - 1.575-104.0**

---

To locate your local Kärcher Commercial Pressure Washer Dealer nearest you,  
please call 1-888-805-9852 or visit [www.karchercommercial.us](http://www.karchercommercial.us)

9.800-082.0

# EXPLODED VIEW



## EXPLODED VIEW PARTS LIST

ITEM	PART NO.	DESCRIPTION	QTY
1		Engine, See Specifications Page 17	
2		Pump, See Specifications Page 17	
3		Unloader, See Specifications Page 17	
4	9.804-025.0	Pump Protector, 1/4" 145° (100.0, 101.0)	1
5	9.802-146.0	Swivel, 1/2" MP x 3/4" GHF	1
6	9.802-171.0	Nipple, 3/8" x 3/8" MPT Male (100.0-101.0, 102.0-104.0)	1
7	9.802-254.0	Hose, 1/4" Push-on (102.0, 104.0)	14"
8	9.802-251.0	Tube, 1/4" x 1/2" Clear Vinyl	6 ft.
9	9.802-142.0	Hose, Barb, 1/4" Barb x 1/8" MP, 90° (102.0, 104.0)	2
10	9.802-190.0	Valve, E-Z Start, 3/8" MPT x 1/8" FPT (102.0, 104.0)	1
11	9.803-125.0	Base, CW Direct, Black	1
12	9.802-210.0	Clamp, Hose (100.0, 101.0) (102.0, 104.0)	2 4
13	9.802-711.0	Bolt, 5/16-24" x 1" NF, HH (100.0, 101.0)	4
	9.802-722.0	Bolt, 3/8" x 1-1/4" NC, HH (102.0, 104.0)	4
14	9.802-216.0	Injector, Chemical, Non-Adj. (Assy Part#)	1
15	9.800-723.0	Label, Instructions	1
16	9.802-160.0	Strainer, Plastic, 1/4" Hose Barb	1
17		Hose, High Pressure, See Specifications Page 17	
18	9.802-223.0	Spray Gun, SK2, 3/8" Inlet, Lance	1
19	9.802-220.0	Wand, 18" M22 x 1/4" QC	1
20		Nozzle Size, See Page 17 For Proper Size	
	9.802-287.0	Nozzle, 3.0 0° Red (100.0, 101.0)	1
	9.802-288.0	Nozzle, 3.0 15° Yellow (100.0, 101.0)	1
	9.802-289.0	Nozzle, 3.0 25° Green (100.0, 101.0)	1
	9.802-290.0	Nozzle, 3.0 40° White (100.0, 101.0)	1
	9.802-291.0	Nozzle, 3.5 0° Red (102.0)	1
	9.802-292.0	Nozzle, 3.5 15° Yellow (102.0)	1
	9.802-293.0	Nozzle, 3.5 25° Green (102.0)	1
	9.802-294.0	Nozzle, 3.5 40° White (102.0)	1
	9.802-295.0	Nozzle, 4.0 0° Red (104.0)	1
	9.802-296.0	Nozzle, 4.0 15° Yellow (104.0)	1
	9.802-297.0	Nozzle, 4.0 25° Green (104.0)	1
	9.802-298.0	Nozzle, 4.0 40° White (104.0)	1
	9.802-311.0	Nozzle, Compl, QCCEM-6540, Brass	1
21	9.803-097.0	Axle, 5/8" x 19.625" Long	1
22	9.800-006.0	Label, HOT	1
23	9.802-713.0	Bolt, 5/16" x 1-1/2", NC HH (100.0, 101.0)	4
	9.802-727.0	Bolt, 3/8" x 1-3/4" Tap (102.0, 104.0)	4
24	9.802-807.0	Washer, 3/8" SAE, Flat	6
25	9.802-779.0	Nut, 3/8" ESNA, NC	6
26	9.802-728.0	Bolt, 3/8" x 2" NC, HH	4
27	9.803-114.0	Retainer Bracket, Handle, Black	2
28	9.802-773.0	Nut, 1/4" ESNA, NC	6
ITEM	PART NO.	DESCRIPTION	QTY

## EXPLODED VIEW PARTS LIST CONT.

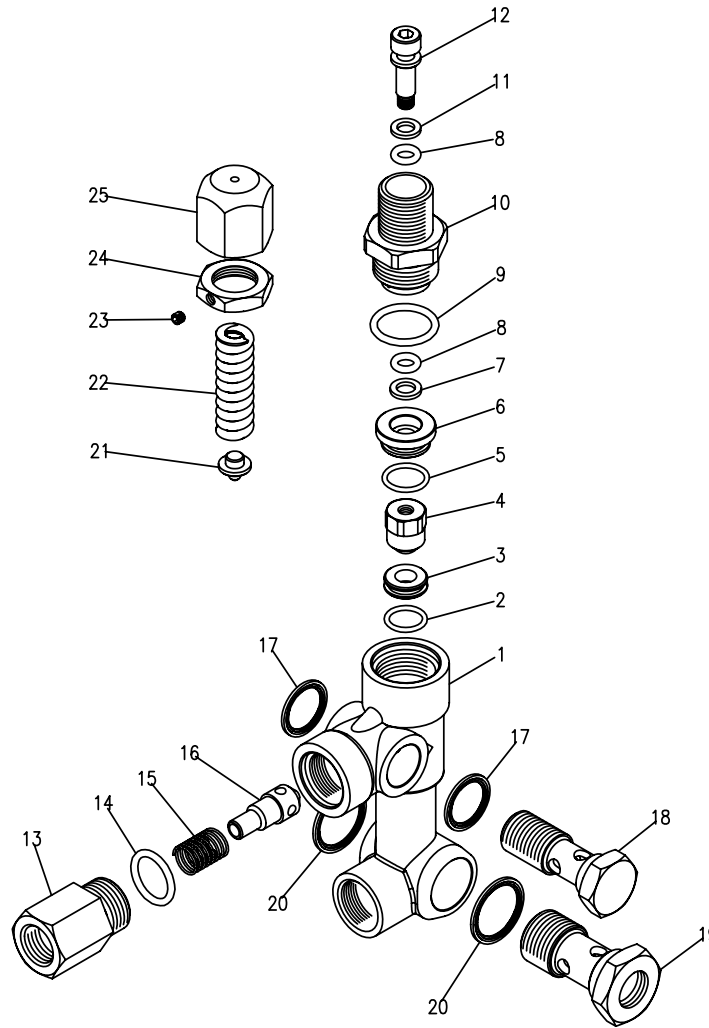
29	9.802-802.0	Washer, 1/4" Flat	6
30	9.802-064.0	Grommet, Rubber, Nozzle Holder	5
31	9.802-778.0	Nut, 5/16" Flange, Whiz Loc	2
32	9.803-122.0	Handle, Grab, Chrome	1
33	9.803-126.0	Plate, Warning, Black	1
34	9.803-098.0	Hanger, Hose/Wand	1
35	9.802-706.0	Bolt, 1/4"-20 x 1-3/4", Carriage, Zinc	6
36	9.803-119.0	Handle, Lower Grab, Chrome	1
37	9.802-066.0	Pad, Soft Rubber	2
38	9.802-817.0	Washer, 3/8" x 1" Steel	2
39	9.802-729.0	Bolt, 3/8" x 2-1/4" HH, Grd. 5	2
40	9.802-712.0	Bolt, Carriage, 5/16" x 1-3/4"	4
41	9.802-804.0	Washer, 5/16" Flat	4
42	9.802-776.0	Nut, 5/16" ESNA, NC	4
43	9.803-123.0	Handle, Bumper, Chrome	1
44	9.802-103.0	Bushing, 5/8" Snap	2
45	9.802-270.0	Wheel & Tire Assy, 4" Steel Rim w/Tube	2
46	9.802-783.0	Cap, 5/8" Axle Hub, Black	2
47	9.800-008.0	Label, Cool Engine Before Filling	1
48	9.802-810.0	Washer, 3/8" Flat	2
49	9.802-958.0	Key, .185 Sqr. x 1.75" (100.0, 101.0)	1
	9.802-959.0	Key, .247 Sqr. x 2.125 (102.0, 104.0)	1
50	9.800-049.0	Label, Manufacturer's Cleaning Solution	1
51	9.802-776.0	Nut, 5/16" ESNA, NC (100.0, 101.0)	4
	9.802-779.0	Nut, 3/8" ESNA, NC (102.0, 104.0)	4
52	9.802-804.0	Washer, 5/16" Flat (100.0, 101.0)	12
	9.802-807.0	Washer, 3/8" Flat, (102.0, 104.0)	12
53	9.802-182.0	Pump Protector, 1/2" PTP	1

## SPECIFICATIONS

Machine Model	Pressure (PSI)	Nozzle Size	Hose Part #	Pump Model	Pump Part #	Unloader Part #	Engine Hp	Engine Part #	
1.575-100.0	2.3	2400	3.0	9.802-233.0	KG2530G	9.803-822.0	9.803-899.0	5.5	9.802-316.0
1.575-100.0	2.3	2400	3.0	4-0203050C	KG2530G	5-1150	5-3329	5.5	5-0104
1.575-101.0	2.5	2700	3.0	9.802-233.0	KG2530G	9.803-822.0	9.803-899.0	6.5	9.802-317.0
1.575-101.0	2.5	2700	3.0	4-0203050C	KG2530G	5-1150	5-3329	6.5	5-01041
1.575-102.0	3.0	3000	3.5	9.802-233.0	KS3040G	9.802-348.0	9.802-363.0	9	9.802-315.0
1.575-102.0	3.0	3000	3.5	4-0203050C	KS3040G	5-1160	5-3029	9	5-0102
1.575-104.0	3.8	3500	4.0	9.802-250.0	KS4040G	9.802-350.0	9.802-363.0	13	9.802-322.0
1.575-104.0	3.8	3500	4.0	4-020750C	KS4040G	5-1162	5-3029	13	5-010721

## VBA35 UNLOADER EXPLODED VIEW

5-3329 Unloader, 25 lpm @ 240 BAR, Fits with KG2530 Pump

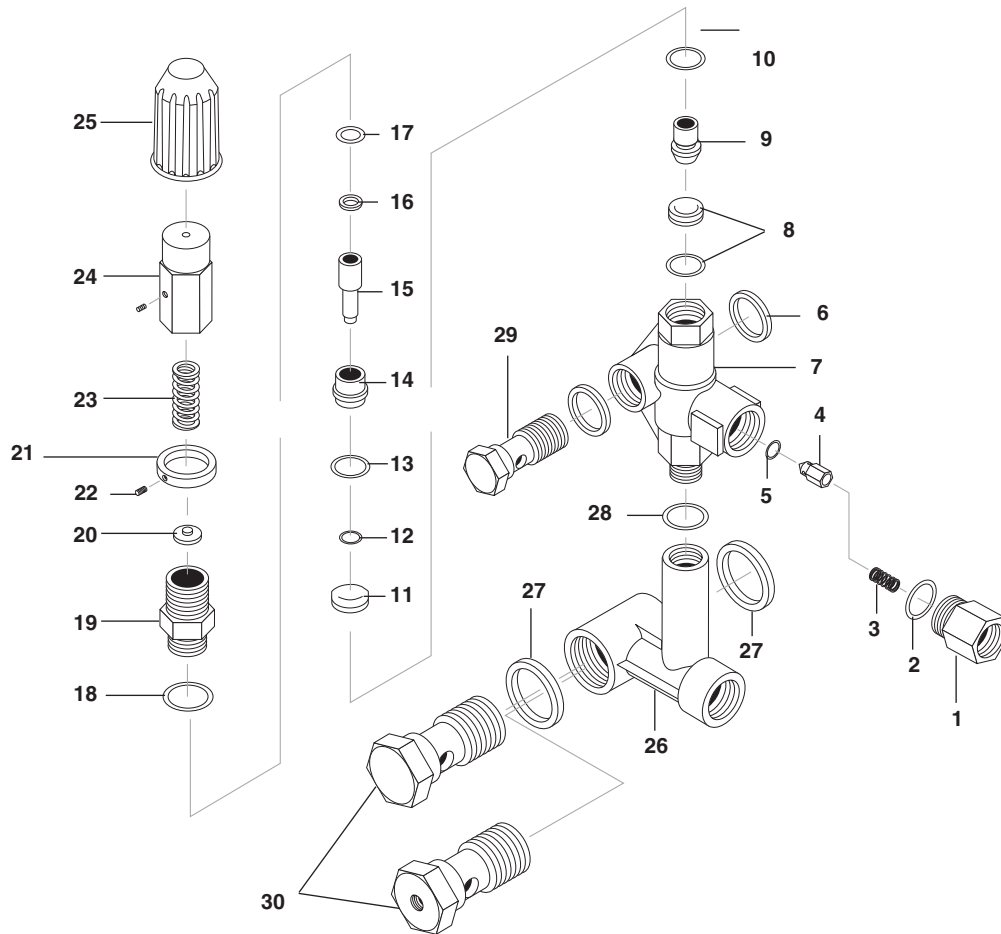


### VBA35 UNLOADER EXPLODED VIEW PARTS LIST

ITEM	PART #	DESCRIPTION	KIT	QTY	ITEM	PART #	DESCRIPTION	KIT	QTY
1	9.803-902.0	Body Valve (KG)		1	15	9.803-916.0	Spring	B	1
	9.803-901.0	Body Valve (KS)		1	16	9.803-917.0	Poppet	B	1
2	9.803-903.0	O-Ring	A, C	1	17	9.802-893.0	Seal Washer 3/8		2
3	9.803-904.0	Seat	C	1	18	9.803-920.0	Banjo Bolt, 3/8 w/ 1/8 Pilot		1
4	9.803-905.0	Ball, Sub-assy	C	1	19	9.803-915.0	Banjo Bolt 1/2		1
5	9.803-906.0	O-Ring	A	1	20	9.803-921.0	Seal Washer 1/2		2
6	9.803-907.0	Guide Bushing		1	21	9.803-922.0	Plate	C	1
7	9.803-908.0	Teflon Ring	A	1	22	9.803-923.0	Spring	C	1
8	9.803-909.0	O-Ring	A	2	23	9.803-924.0	Set Screw		1
9	9.803-910.0	O-Ring	A	1	24	9.803-925.0	Nut		1
10	9.803-911.0	Connector		1	25	9.803-926.0	Brass Handle		1
11	9.803-912.0	Teflon Ring	A	1	<b>Kit A</b>	9.803-927.0	O-Ring Repair Kit		
12	9.803-913.0	Stem	C	1	<b>Kit B</b>	9.803-928.0	Outlet Kit		
13	9.803-914.0	Connector, Female		1	<b>Kit C</b>	9.803-929.0	Stem Repair Kit		
14	9.803-191.0	O-Ring	A, B	1					

## VB55 UNLOADER VALVE EXPLODED VIEW

5-3029 Unloader, PA 8 gpm @ 3650 psi, Fits with KS4040G & KS3040G Pump



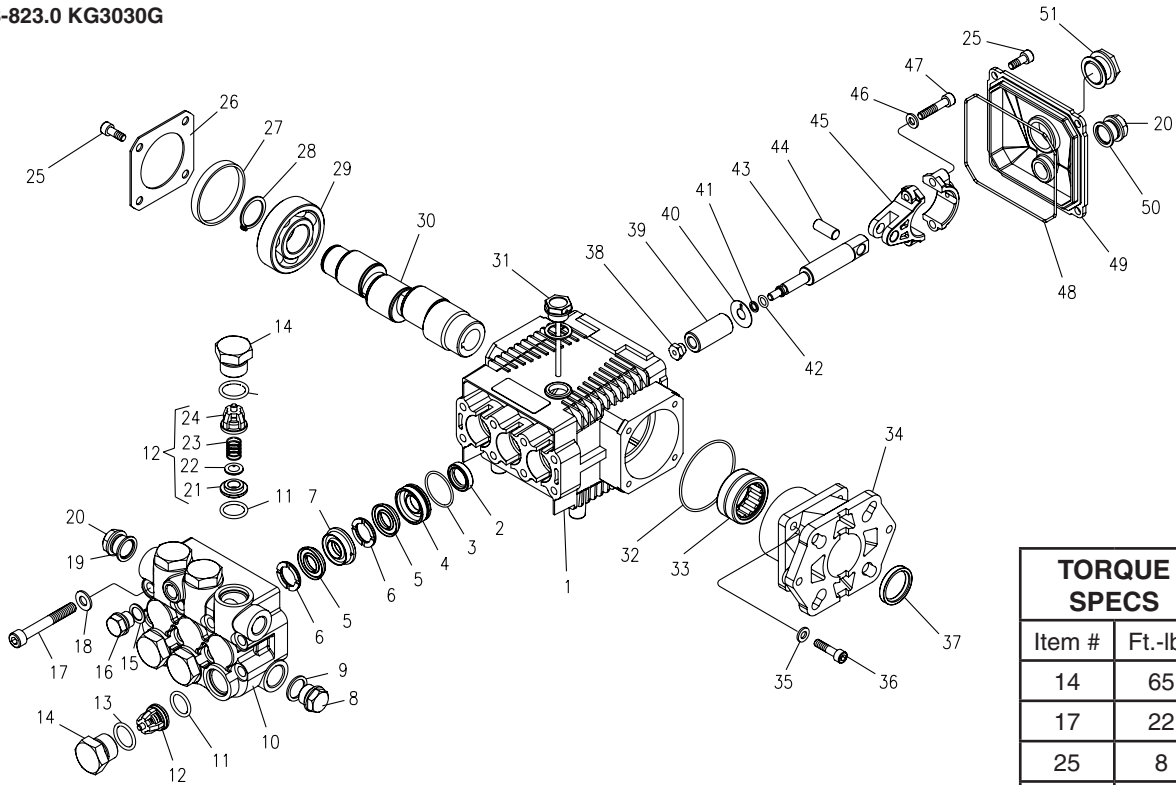
### VB55 UNLOADER VALVE EXPLODED VIEW PARTS LIST

ITEM	PART #	DESCRIPTION	QTY	ITEM	PART #	DESCRIPTION	QTY
1	1-60005831	Delivery Coupl. 3/8F BSP Brass	1	16	1-10401113*	Back-up Ring, 11 x13 x 2mm	1
2	1-10307002*	O-Ring, 1.78 x 18.77 mm Ni 85	1	17	1-10306000*	O-Ring, 1.78x12.42 mm	1
3	1-60005351	Spring, 0.7x9x20 mm Sst	1	18	1-10306801*	O-Ring, 1.78x17.17 mm Ni85	1
4	1-60005231	Shutter Pin, Brass	1	19	1-60130831	Piston Holder, Brass	1
5	1-10321300*	O-Ring, 3 x 6 mm	1	20	1-60131331	Spring Guide Pin	1
6	1-14410000	Sealing Washer, 3/8 Bsp	2	21	1-16210000	Set Screw, DIN914 M4x4mm	1
7	1-60135135	Valve Housing, VB55, Brass	1	22	1-60131231	Ring Nut, M20x1 Brass	1
8	1-60130620*	Seat, 8mm + O-Ring, 1.78mm NBR85	1	23	1-60131561	Spring, 3.4x13.8x48 mm z.pl	1
9	1-60131121*	Shutter Pin, M6 Brass + Ball, 13/32" Sst	1	24	1-60130431	Valve, Regulating Insert, Brass	1
10	1-10306401*	O-Ring, 1.78x14 mm Ni85	1	25	1-60120284	Valve, Regulating Knob, PA Black	1
11	1-60130131	Spacer Ring, 7x18x7.5 mm Brass	1	26	1-60135235	Manifold, 1/2F Bsp, Brass (5-3025)	1
12	1-10400792*	Back-up Ring 7x9x2 mm	1		1-60137635	Manifold, 1/2F Bsp-3/8F Brass (5-3029)	1
13	1-10305600*	O-Ring, 1.78x8.74 mm	1	27	1-14410100	Sealing Washer, 1/2 Bsp	2
14	1-60130331	Spacer Ring, 7.3x18.5x12.7 mm Brass	1	28	1-10317510	O-Ring, 2.62x10.77 mm Vi 70	1
15	1-60130751	Piston, M6 Sst	1	29	1-60100731	Banjo Bolt, 3/8 M Bsp	1
				30	1-60100831	Banjo Bolt, 1/2 M Bsp	1
					1-60077331	Banjo Bolt, 1/2 MBsp w/1/8" NPT Pilot	1

\* Kit 1-60131624 Repair Kit (K1)

## KG PUMP EXPLODED VIEW

9.803-822.0 KG2530G  
9.803-823.0 KG3030G



TORQUE SPECS	
Item #	Ft.-lbs
14	65
17	22
25	8
36	8
38	9
47	13

## KG PUMP EXPLODED VIEW PARTS LIST

ITEM	PART NO.	DESCRIPTION	QTY	ITEM	PART NO.	DESCRIPTION	QTY
1	70-020292	Crankcase	1	18	70-140001	Washer	8
2*	See Kit Below	Plunger Oil Seal	3	19	70-060306	Copper Washer 3/8"	1
3*	70-060181	O-Ring Ø1.78 x 28.30	3	20	70-160117	Brass Plug 3/8"	2
4*	70-120120	Pressure Ring, 15mm	3	25	70-180112	Hexagonal Screw	9
5*	See Kit Below	"V" Seal, 15mm	6	26	70-020318	Bearing Cover	1
6*	70-030048	Support Ring 15mm	6	27	70-020502	Seal Bearing	1
7*	70-030049	Intermediate Ring 15mm	3	28	70-150003	Snap Ring	1
8	70-160120	Brass Plug, 1/2"	1	29	70-021300	Ball Bearing	1
9	70-060307	Copper Washer 1/2"	1	30	70-000498	Crankshaft (2530G)	1
10	70-160228	Manifold Housing	1		70-000499	Crankshaft (3030G)	1
11*	70-060155	O-Ring Ø1.78 x 15.54	6	31	70-160012	Oil Dip Stick	1
12*	See Kit Below	Valve Assembly	6	32	70-060183	O-Ring 3.53 x 55.56	1
13*	70-060122	O-Ring Ø2.62 x 18.77	6	33	70-020011	Needle Roller Bearing	1
14	70-160147	Valve Plug	6	34	70-050096	Engine Flange	1
15	70-060308	Washer, Copper	1	35	70-140002	Spring Washer	4
16	70-160121	Brass Plug G1/4	1	36	70-180126	Flange Screw	4
17	70-180118	Manifold Stud Bolt	8				



## KG PUMP EXPLODED VIEW PARTS LIST (CONT)

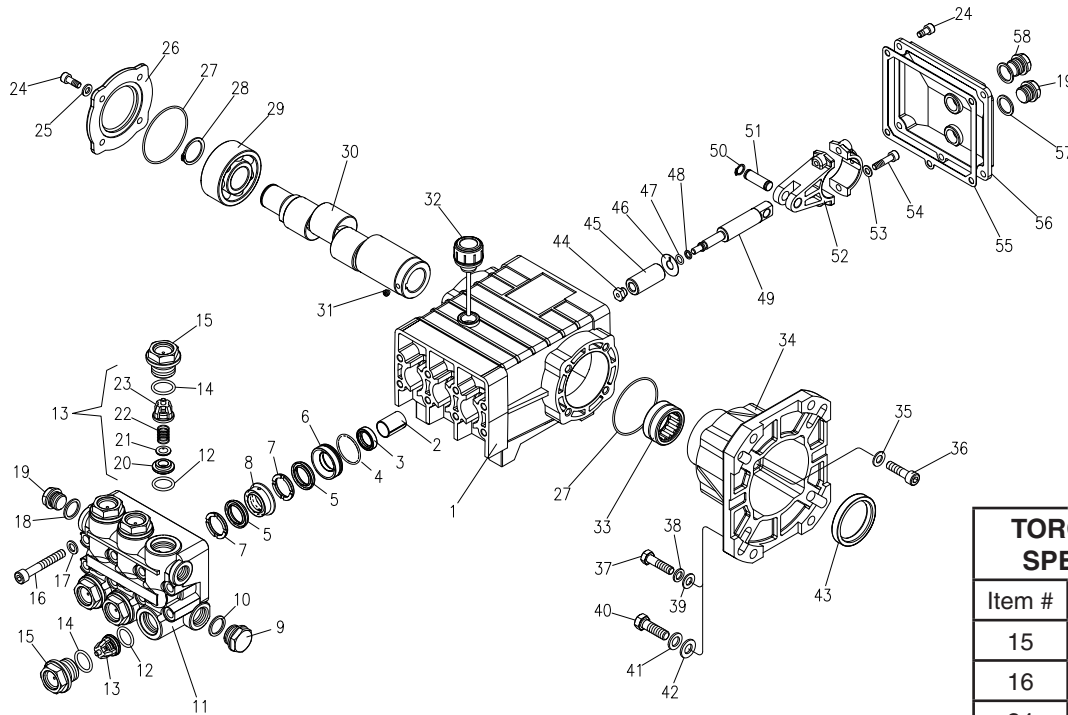
ITEM	PART NO.	DESCRIPTION	QTY
37	70-000105	Crankshaft Seal	1
38*	70-030211	Plunger Nut	3
39*	See Kit Below	Plunger, 15mm	3
40*	70-140027	Copper Spacer	3
41*	70-060130	O-Ring Ø1.78x5.28	3
42*	70-000913	Teflon Ring	3
43	70-000320	Plunger Rod	3
44	70-150204	Connecting Rod Pin	3
45	70-010008	Connecting Rod	3
46	70-140102	Spring Washer	6
47	70-180132	Connecting Rod Screw	6
48	70-060104	O-Ring 2.62 x 107.62	1
49	70-020352	Crankcase Cover	1
50	70-060302	Gasket, G3/8	1
51	70-070005	Sightglass G3/8	1

\* Part available in kit (See below)

REPAIR KIT NUMBER	70-261408	70-261409	70-261404	70-260028	70-260826
KIT DESCRIPTION	Plunger Seal 15mm	Complete Seal Packing 15mm	Plunger 15mm	Complete Valve	Plunger Oil Seals
ITEM NUMBERS INCLUDED	3, 5, 6	2, 3, 4, 5, 6, 7	38, 39, 40, 41, 42	11, 12, 13	2
NUMBER OF CYLINDERS KIT WILL SERVICE	3	1	1	6	3

## KS PUMP EXPLODED VIEW

9.802-348.0 KS3040G  
9.802-350.0 KS4040G



TORQUE SPECS	
Item #	Ft.-lbs
15	75
16	22
24	8
36	10
44	9
54	13

## KS PUMP EXPLODED VIEW PARTS LIST

ITEM	PART NO.	DESCRIPTION	QTY	ITEM	PART NO.	DESCRIPTION	QTY
1	9.802-746.0	Crankcase	1	24	9.802-939.0	Hexagonal Screw	9
2	9.803-196.0	Plunger Guide	3	25	9.803-210.0	Washer	4
3*	See Kit Below	Plunger Oil Seal	3	26	9.803-184.0	Closed Bearing Housing	1
4*	9.803-189.0	O-Ring Ø1.78 x 31.47	3	27	9.803-192.0	O-Ring Ø 1.78 x 60.05	2
5*	See Kit Below	"V" Seal , 15mm	6	28	9.802-914.0	Snap Ring	1
6*	See Kit Below	Pressure Ring, 15mm	3	29	9.803-168.0	Double Row Ball Bearing	1
7*	See Kit Below	Support Ring 15mm	6	30	9.803-150.0	Crankshaft (KS3040G)	1
8*	See Kit Below	Intermed. Ring 15mm	3		9.803-152.0	Crankshaft (KS4040G)	1
9	9.802-926.0	Brass Plug, 1/2"	1	31	9.802-945.0	Set Screw	1
10	9.803-199.0	Copper Washer 1/2"	1	32	9.802-921.0	Oil Dip Stick	1
11	9.802-932.0	Manifold Housing	1	33	9.803-161.0	Needle Roller Bearing	1
12*	9.803-191.0	O-Ring Ø2.62 x 17.13	6	34	9.803-183.0	Engine Flange	1
13*	See Kit Below	Valve Assembly	6	35	9.803-221.0	Spring Washer	4
14*	9.803-191.0	O-Ring Ø2.62 x 20.29	6	36	9.803-240.0	Flange Screw	4
15	9.802-928.0	Valve Plug	6	37	9.803-243.0	Engine Screw, 5/16"	4
16	9.802-938.0	Manifold Stud Bolt	8	38	9.803-215.0	Washer	4
17	9.802-884.0	Washer	8	39	9.802-889.0	Spring Washer	4
18	9.803-198.0	Copper Washer 3/8"	1				
19	9.802-925.0	Brass Plug 3/8"	2				

## KS PUMP EXPLODED VIEW PARTS LIST

ITEM	PART NO.	DESCRIPTION	QTY
40	9.803-244.0	Engine Screw 3/8"	4
41	9.803-216.0	Washer	4
42	9.803-217.0	Spring Washer	4
43	9.803-142.0	Crankshaft Seal	1
44*	See Kit Below	Plunger Nut	3
45*	See Kit Below	Plunger, 15mm	3
46*	See Kit Below	Copper Spacer	3
47*	See Kit Below	O-Ring Ø1.78x5.28	3
48*	9.803-156.0	Teflon Ring	3
49	9.803-145.0	Plunger Rod	3
50	9.802-913.0	Snap Ring	6
51	9.802-916.0	Connecting Rod Pin	3
52	9.803-158.0	Connecting Rod	3
53	9.803-218.0	Spring Washer	6
54	9.803-238.0	Connecting Rod Screw	6
55	9.803-185.0	Cover Gasket	1
56	9.803-165.0	Crankcase Cover	1
57	9.803-197.0	Gasket, G3/8	1
58	9.803-201.0	Sight Glass, G3/8	1

\* Part available in kit (See below)

REPAIR KIT NUMBER	9.802-622.0	9.802-623.0	9.802-621.0	9.802-603.0	9.802-609.0
KIT DESCRIPTION	Plunger Seal 15mm	Complete Seal Packing 15mm	Plunger 15mm	Complete Valve	Plunger Oil Seals
ITEM NUMBERS INCLUDED	4, 5, 7	3, 4, 5, 6, 7, 8	44, 45, 46, 47, 48	12, 13, 14	3
NUMBER OF CYLINDERS KIT WILL SERVICE	3	1	1	6	3