

**Spare parts list**  
**(5.972-842.0) Spare parts list HD 1.8/13 C Ed**

## Table of contents

---

<b>Spare parts list HD 1.8/13 C Ed (5.972-842.0)</b> .....	6
10 Housing .....	7
11 Housing .....	8
12 Hand grip and wheels .....	10
20 Pump set .....	12
21 Cylinder head .....	13
1 Control piston complete replacement (2.885-408.0) .....	16
10 Cylinder head complete brass (4.550-942.0) .....	18
17 Valve pin complete (4.584-022.0) .....	20
19 Nozzle insert (4.769-035.0) .....	23
22 Plug complete (4.580-702.0) .....	26
27 Set from valve retainer and drive-in man (2.901-049.0) .....	29
Pump set HDC (2.885-377.0) .....	30
22 Piston guidance .....	31
30 Motor .....	33
40 Accessories .....	35
41 Hand trigger gun .....	36
4 Lever complete (4.481-209.0) .....	38
6 Manifold complete only for replacement (4.427-215.0) .....	40
42 Hand trigger gun .....	42
4 Lever complete (4.481-209.0) .....	44
6 Manifold complete only for replacement (4.427-215.0) .....	46
43 High pressure hose .....	48
44 Jet pipe .....	50
45 Triple jet nozzle .....	52
0 Triple jet nozzle only for replacement 0 (4.767-195.0) .....	54
2 Spare parts list triple jet nozzle .....	55
10 Triple jet nozzle plastics .....	56
20 Triple jet nozzle brass .....	58
50 Electric box .....	60

**Spare parts list HD 1.8/13 C Ed (5.972-842.0)**

---

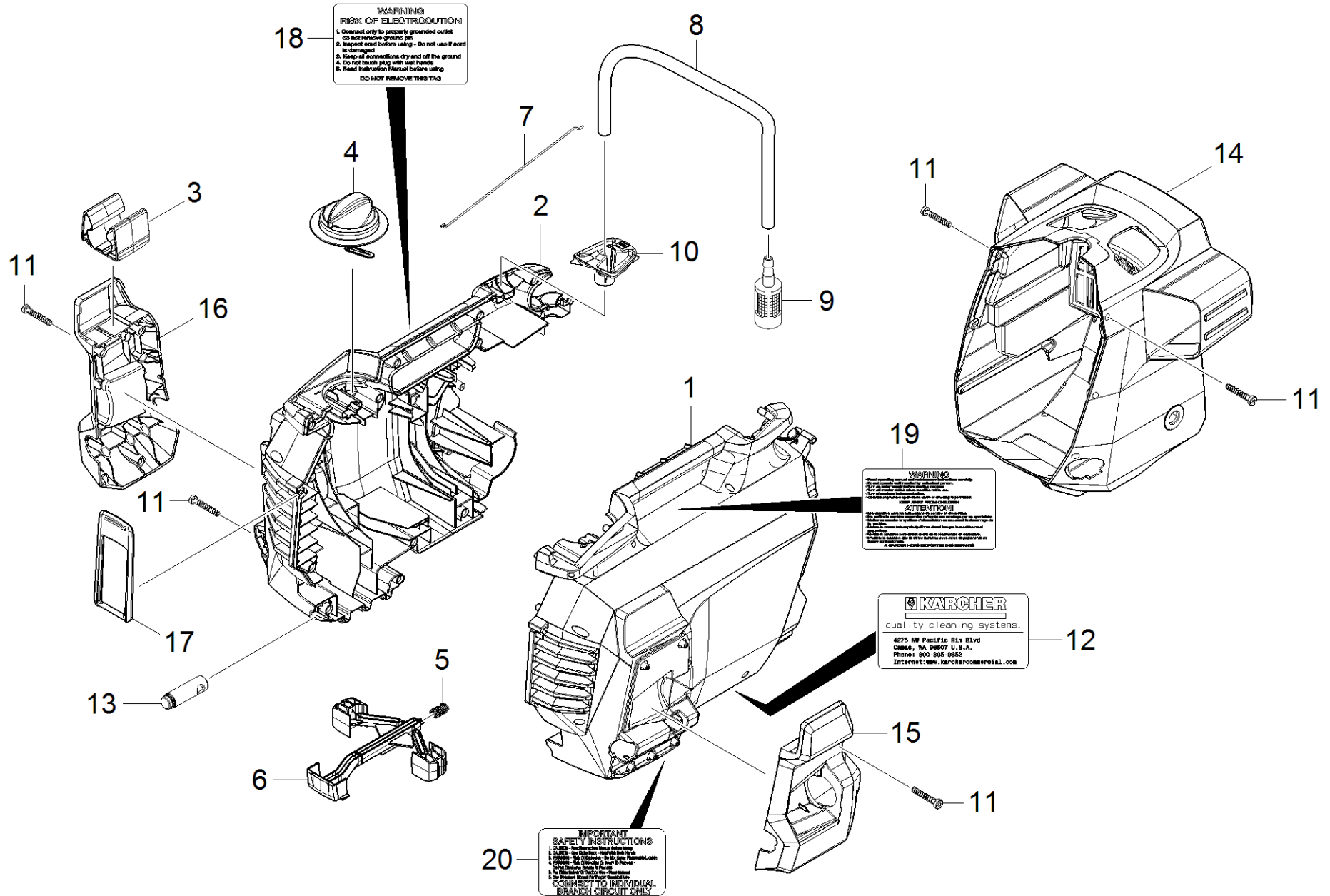
<b>Pos</b>	<b>Name</b>	<b>Qty.</b>	<b>Unit</b>
10	Housing	1.000	ST
20	Pump set	1.000	ST
30	Motor	1.000	ST
40	Accessories	1.000	ST
50	Electric box	1.000	ST

---

## 10 Housing

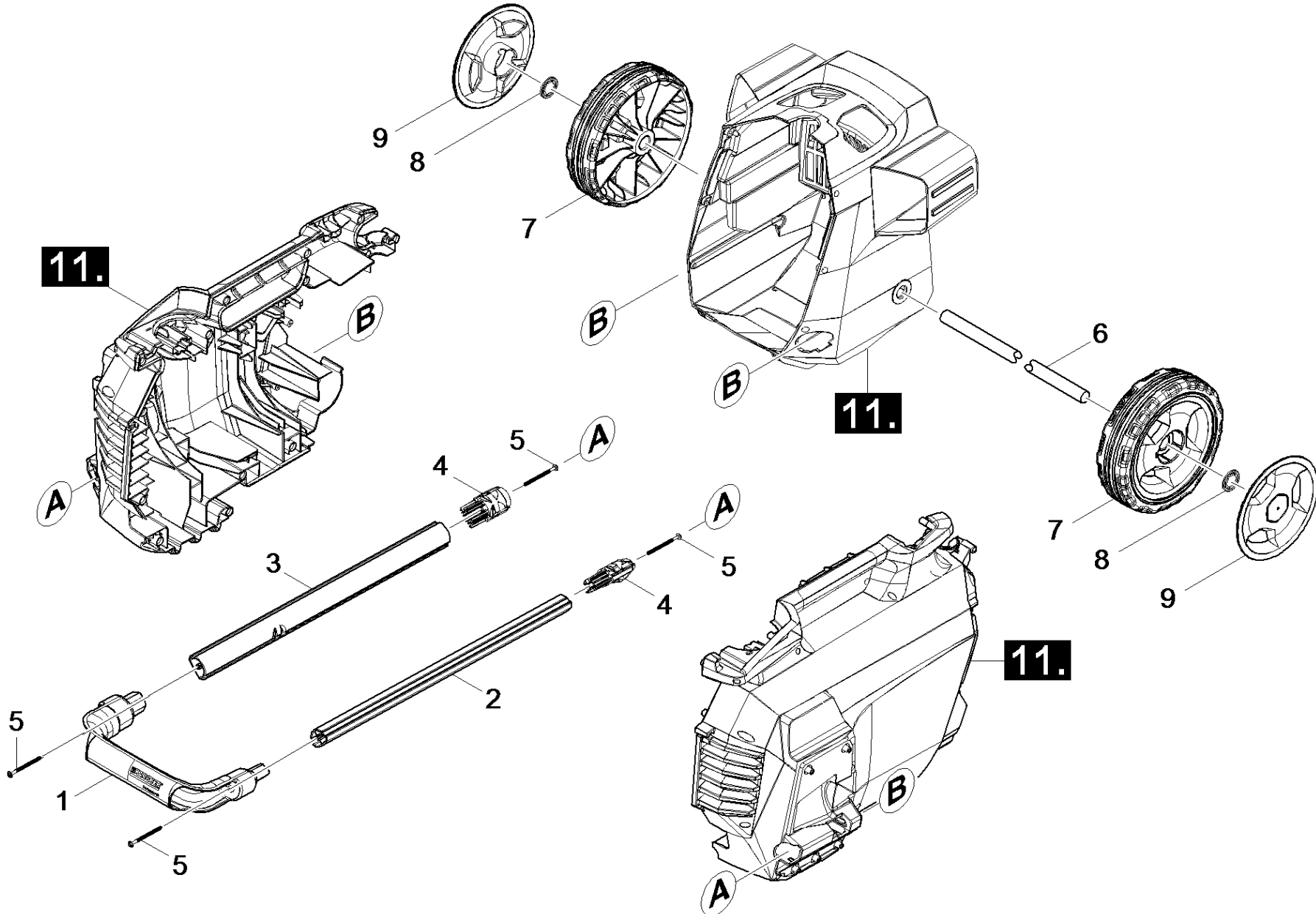
---

Pos	Name	Qty.	Unit
11	Housing	1.000	ST
12	Hand grip and wheels	1.000	ST



## 11 Housing

ET/VT (spare/wear parts)	Pos	Material #	Name	Qty.	Unit	Footnote text
X-X	1	5.645-873.0	Housing above left HD-C	1.000	ST	
X-X	2	5.645-878.0	Housing above right HD-C	1.000	ST	
X	3	5.645-709.0	Holder jet pipe	1.000	ST	
X	4	4.324-057.0	Handle complete	1.000	ST	
X	5	5.332-001.0	Helical spring	1.000	ST	
X	6	5.645-675.0	Locking part	1.000	ST	
X	7	5.107-313.0	Switch rod	1.000	ST	
	8	6.388-216.0	Hose DN 5	1.050	M	TO ORDER AS CUT GOODS
X	9	4.862-225.0	Filter chemistry regulation	1.000	ST	
	10	5.645-841.0	Cover cleaning agents	1.000	ST	
X-X	11	6.303-566.0	Screw 4,2x22 R2R	24.000	ST	
	12	5.386-350.0	Label	1.000	ST	
	13	5.645-852.0	Retainer accessories	1.000	ST	
X	14	5.645-654.0	Housing bottom	1.000	ST	
X	15	5.645-655.0	Holder left	1.000	ST	
X	16	5.645-656.0	Holder right	1.000	ST	
X	17	5.379-043.0	Strap	1.000	ST	
	18	5.388-091.0	Warning sign	1.000	ST	
	19	5.386-011.0	Warning sign	1.000	ST	
	20	5.391-816.0	Warning sign - saftey instructions -	1.000	ST	



## 12 Hand grip and wheels

---

ET/VT (spare/wear parts)	Pos	Material #	Name	Qty.	Unit
X	1	5.324-161.0	Hand grip	1.000	ST
	2	5.645-674.0	Tube left Trolley	1.000	ST
	3	5.645-853.0	Tube right Trolley	1.000	ST
X	4	5.645-676.0	End piece locking part	2.000	ST
X	5	6.303-562.0	Saucer-head screw D4x55	4.000	ST
	6	5.105-399.0	Axle	1.000	ST
X	7	5.515-395.0	Wheel D180	2.000	ST
	8	6.343-168.0	Lock washer	2.000	ST
X-X	9	5.515-386.0	Wheel cap large RAL 7012	2.000	ST

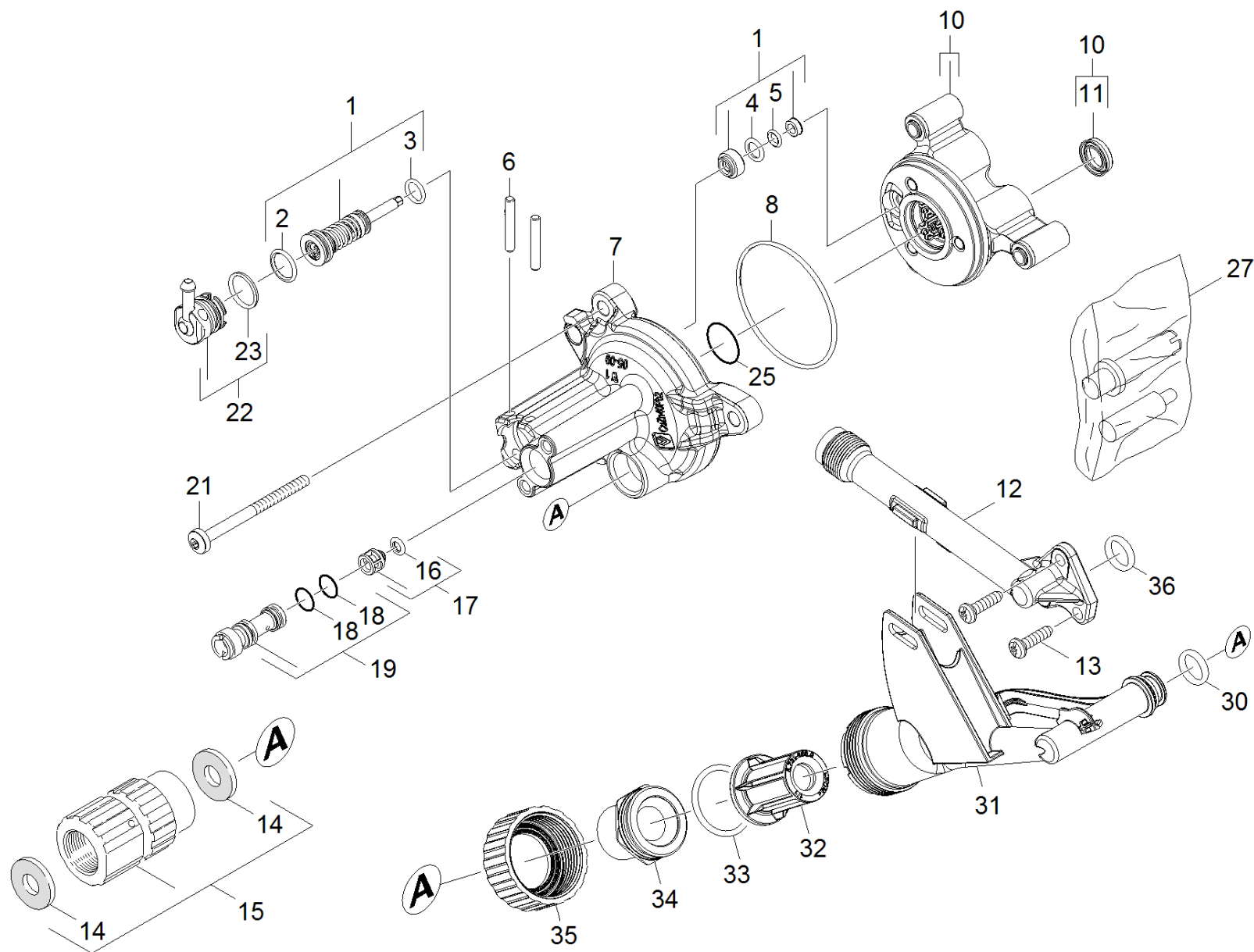
---



## 20 Pump set

---

Pos	Name	Qty.	Unit
21	Cylinder head	1.000	ST
22	Piston guidance	1.000	ST



## 21 Cylinder head

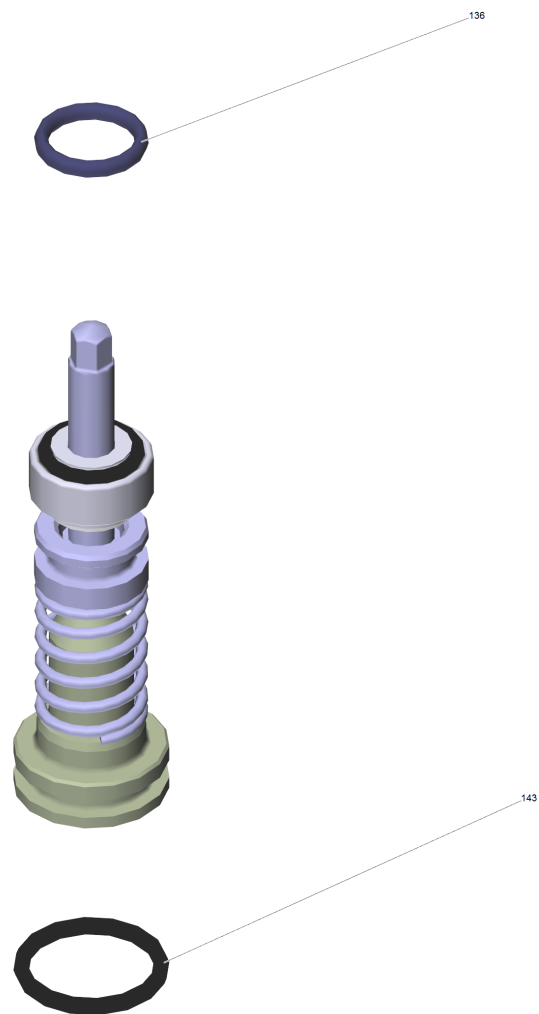
ET/VT (spare/wear parts)	Pos	Material #	Name	Qty.	Unit
X-X	1	2.885-408.0	Control piston complete replacement	1.000	ST
	2	6.362-381.0	O-Ring seal 13x2 - NBR 70	1.000	ST
	3	6.362-958.0	O-Ring seal 9 x 2-NBR 90	1.000	ST
	4	6.362-101.0	O-Ring seal 8 X 2	1.000	ST
	5	6.362-486.0	O-Ring seal 4,7 X 1,9 -NBR 70	1.000	ST
	6	5.314-150.0	Pin	2.000	ST
X-X	7	5.062-390.0	Housing HD-C	1.000	ST
X-X	8	6.362-204.0	O-Ring seal 60,0 X 2,0-NBR 70	1.000	ST
X-X	10	4.550-942.0	Cylinder head complete brass	1.000	ST
X-X	11	6.363-435.0	Grooved ring 12x17x4,25/2,5	3.000	ST
X	12	5.789-064.0	High-pressure outlet	1.000	ST
	13	7.306-092.0	Screw M6x20-ST- 8.8-R3R (IN6RD)	2.000	ST
	14	5.364-129.0	Flat gasket	2.000	ST
	15	4.401-074.0	Screw connector part	1.000	ST
X	16	6.363-613.0	O-Ring seal 4 x 2 -NBR90	1.000	ST
	17	4.584-022.0	Valve pin complete	1.000	ST
	18	6.362-384.0	O-Ring seal 9x1,5 - NBR 70	2.000	ST
	19	4.769-035.0	Nozzle insert	1.000	ST
X	21	7.306-268.0	Screw M6x70 -8.8-R3R (In6Rd)	3.000	ST
X-X	22	4.580-702.0	Plug complete	1.000	ST
	23	6.362-427.0	O-Ring seal 15,0x2,0	1.000	ST
X-X	25	6.362-562.0	O-Ring seal 21,95X 1,78-NBR 90	1.000	ST
	27	2.901-049.0	Set from valve retainer and drive-in man	1.000	ST
X	30	6.363-610.0	O-Ring seal 13 x 3 -NBR	1.000	ST
X-X	31	5.443-672.0	Tube water intake	1.000	ST

## 21 Cylinder head

---

ET/VT (spare/wear parts)	Pos	Material #	Name	Qty.	Unit
X-X	32	5.731-666.0	Filter cartridge with cone	1.000	ST
	33	6.363-437.0	O-Ring seal 30x3	1.000	ST
X	34	5.064-423.0	Connection piece water intake	1.000	ST
X-X	35	5.064-465.0	Nut water intake	1.000	ST
	36	6.362-151.0	O-Ring d. 10 x 2 NBR 70	1.000	ST
X-X	100	2.885-377.0	Pump set HDC	1.000	ST

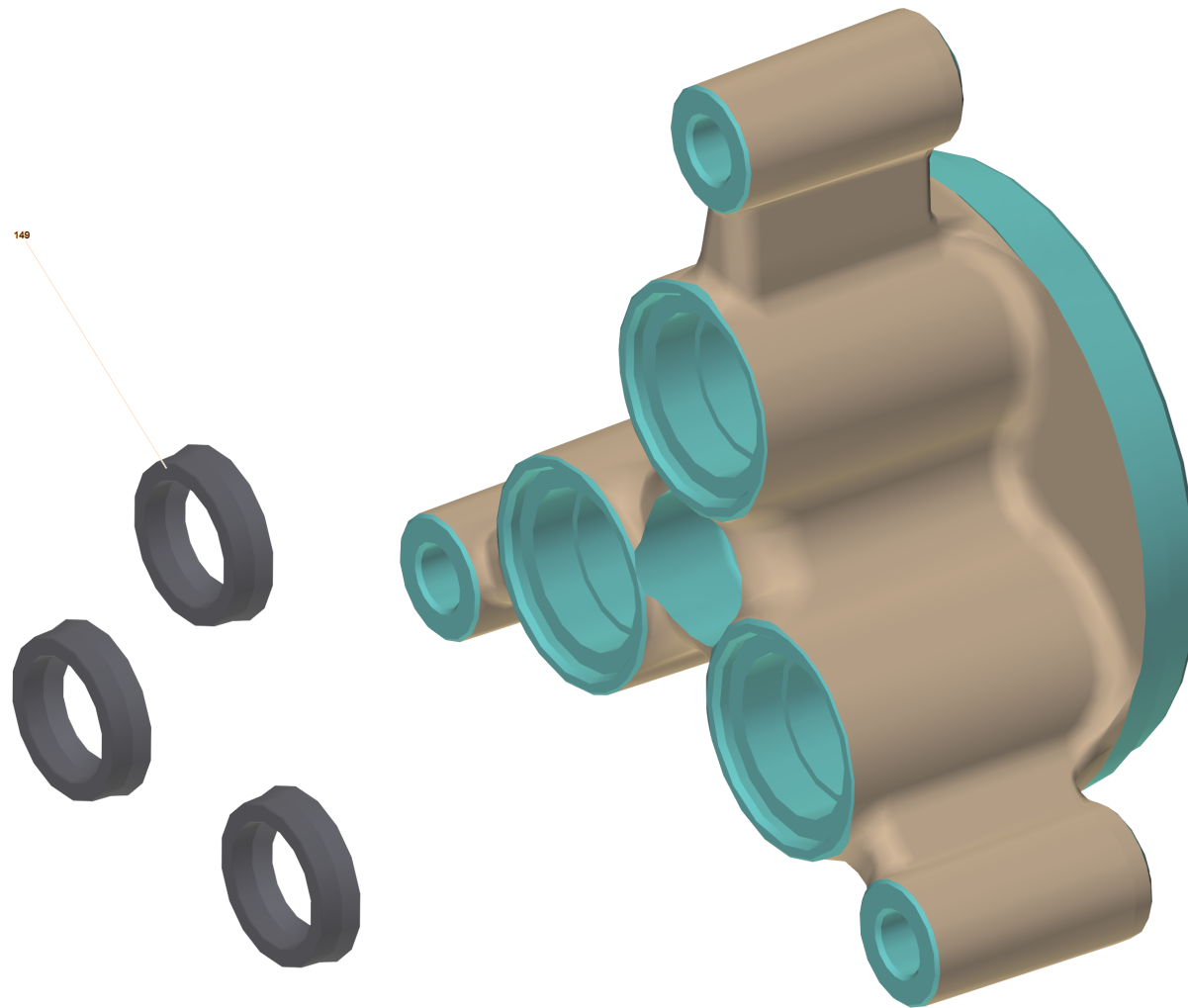
---



**1 Control piston complete replacement (2.885-408.0)**

---

Pos	Material #	Name	Qty.	Unit
136	6.363-614.0	O-Ring seal 9 x 2 -NBR90	1.000	ST
143	6.362-381.0	O-Ring seal 13x2 - NBR 70	1.000	ST



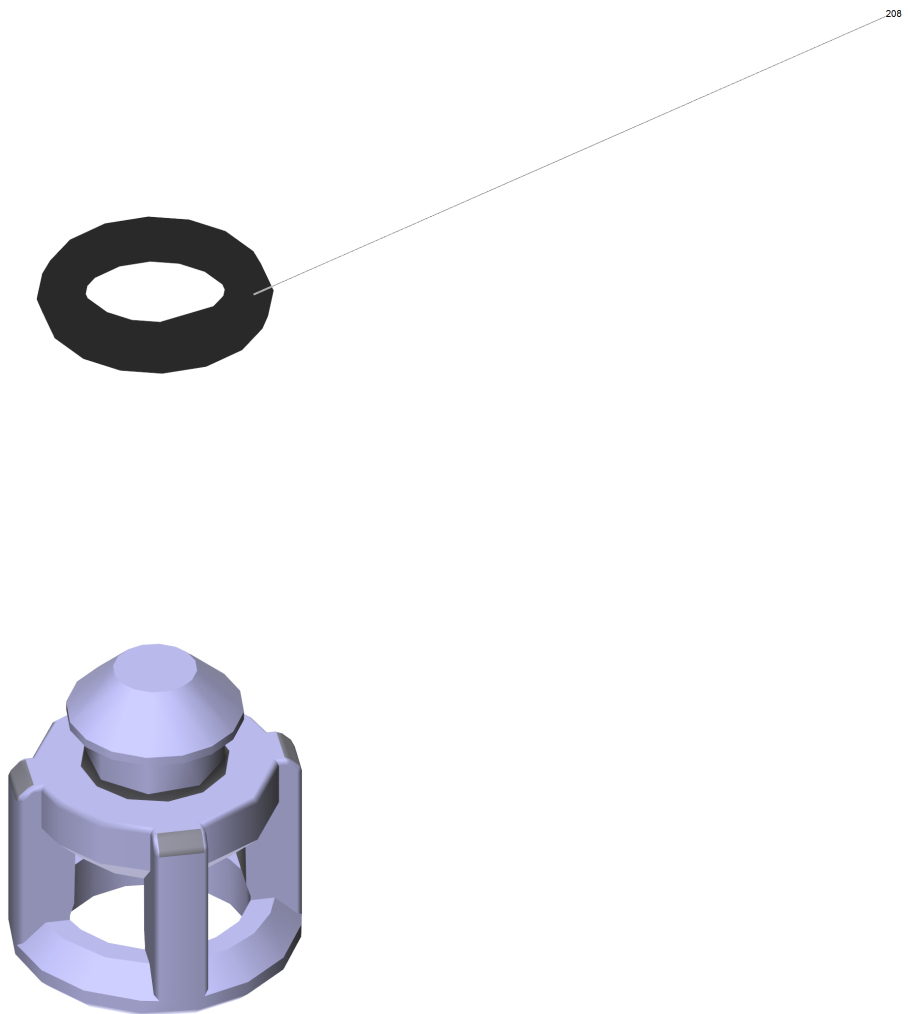
**10 Cylinder head complete brass (4.550-942.0)**

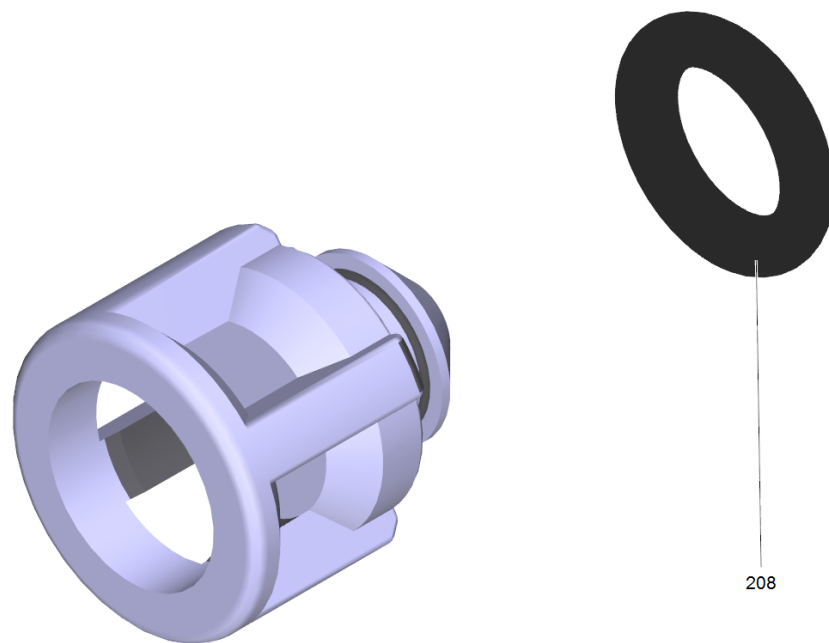
---

ET/VT (spare/wear parts)	Pos	Material #	Name	Qty.	Unit
X-X	149	6.363-435.0	Grooved ring 12x17x4,25/2,5	3.000	ST

---







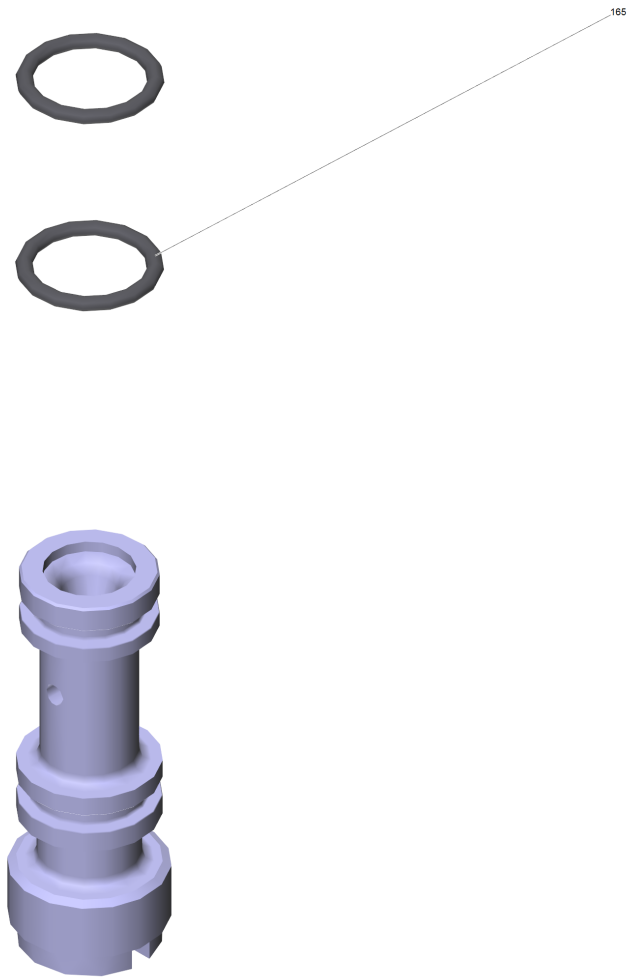
208

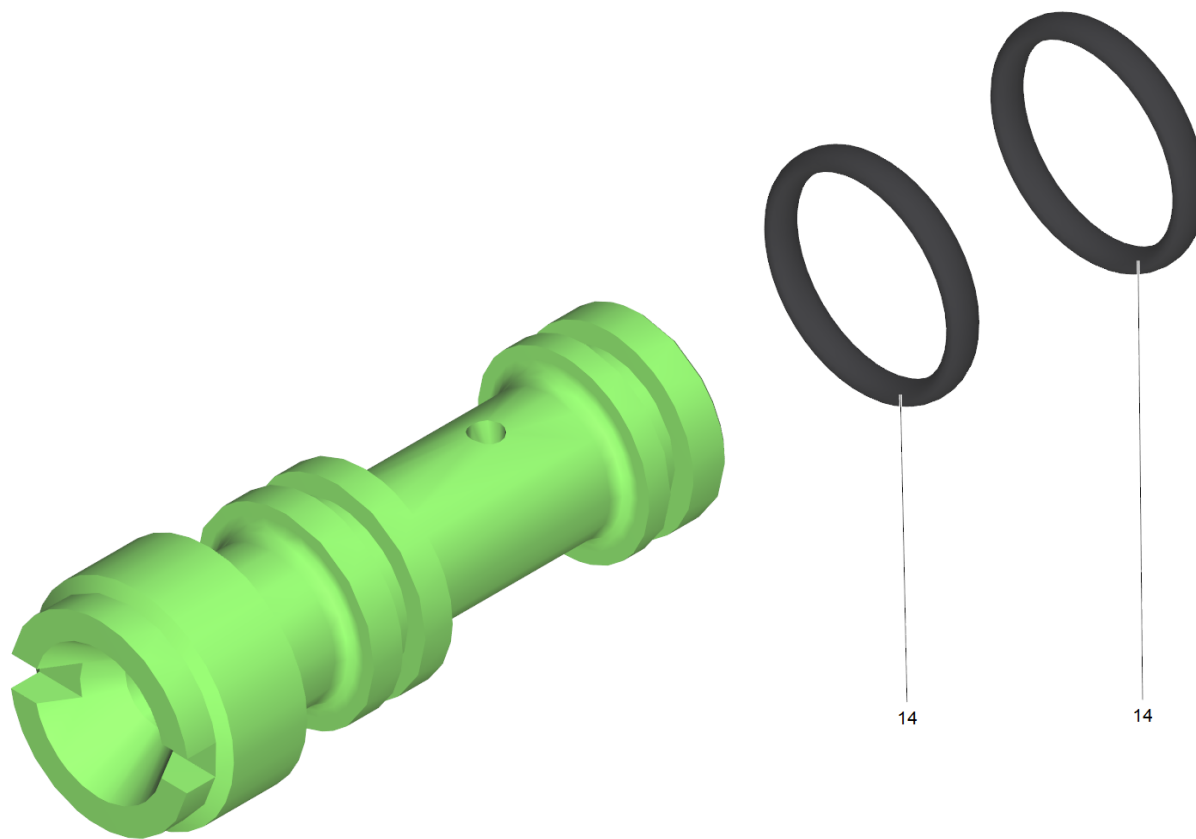
**17 Valve pin complete (4.584-022.0)**

---

ET/VT (spare/wear parts)	Pos	Material #	Name	Qty.	Unit
X	208	6.363-613.0	O-Ring seal 4 x 2 -NBR90	1.000	ST

---





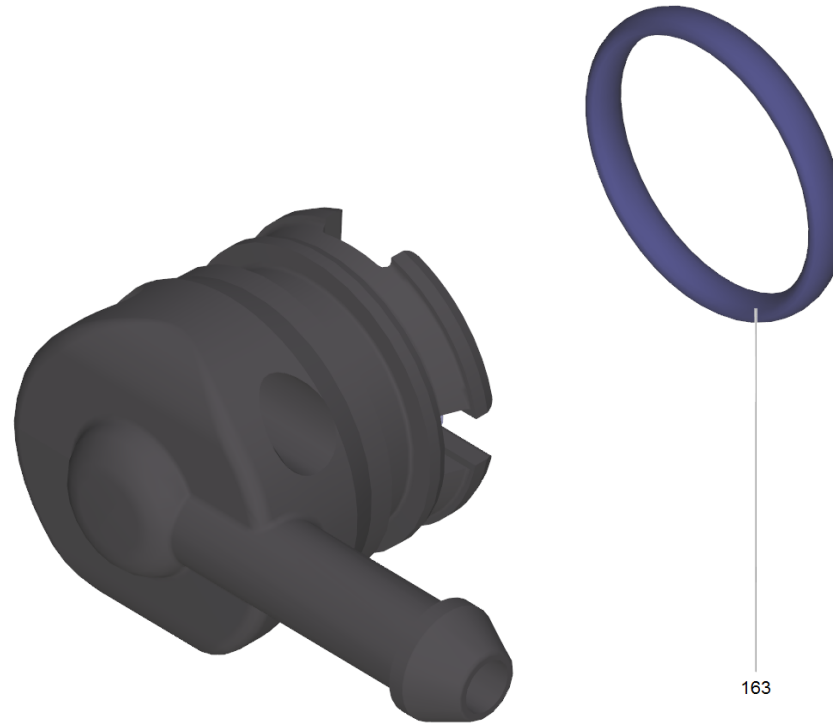
**19 Nozzle insert (4.769-035.0)**

---

Pos	Material #	Name	Qty.	Unit
165	6.362-384.0	O-Ring seal 9x1,5 - NBR 70	2.000	ST

---







**22 Plug complete (4.580-702.0)**

---

Pos	Material #	Name	Qty.	Unit
163	6.362-427.0	O-Ring seal 15,0x2,0	1.000	ST

---

**27 Set from valve retainer and drive-in man (2.901-049.0)**

---

<b>Pos</b>	<b>Material #</b>	<b>Name</b>	<b>Qty.</b>	<b>Unit</b>
3	6.590-002.0	Bag PE 150x230 mm	1.000	ST
4	6.376-020.0	Label 65X55 MM	1.000	ZST

**Pump set HDC (2.885-377.0)**

---

<b>Material #</b>	<b>Name</b>
	Valve complete
6.363-435.0	Grooved ring 12x17x4,25/2,5
5.116-380.0	Washer piston guidance
	Washer
	Washer
5.116-381.0	Supporting disk
6.363-606.0	O-Ring seal 4,7 x 1,9 -NBR70
6.363-616.0	O-Ring seal 60,0x2,0 -NBR70
6.362-562.0	O-Ring seal 21,95X 1,78-NBR 90
6.362-101.0	O-Ring seal 8 X 2
4.584-022.0	Valve pin complete

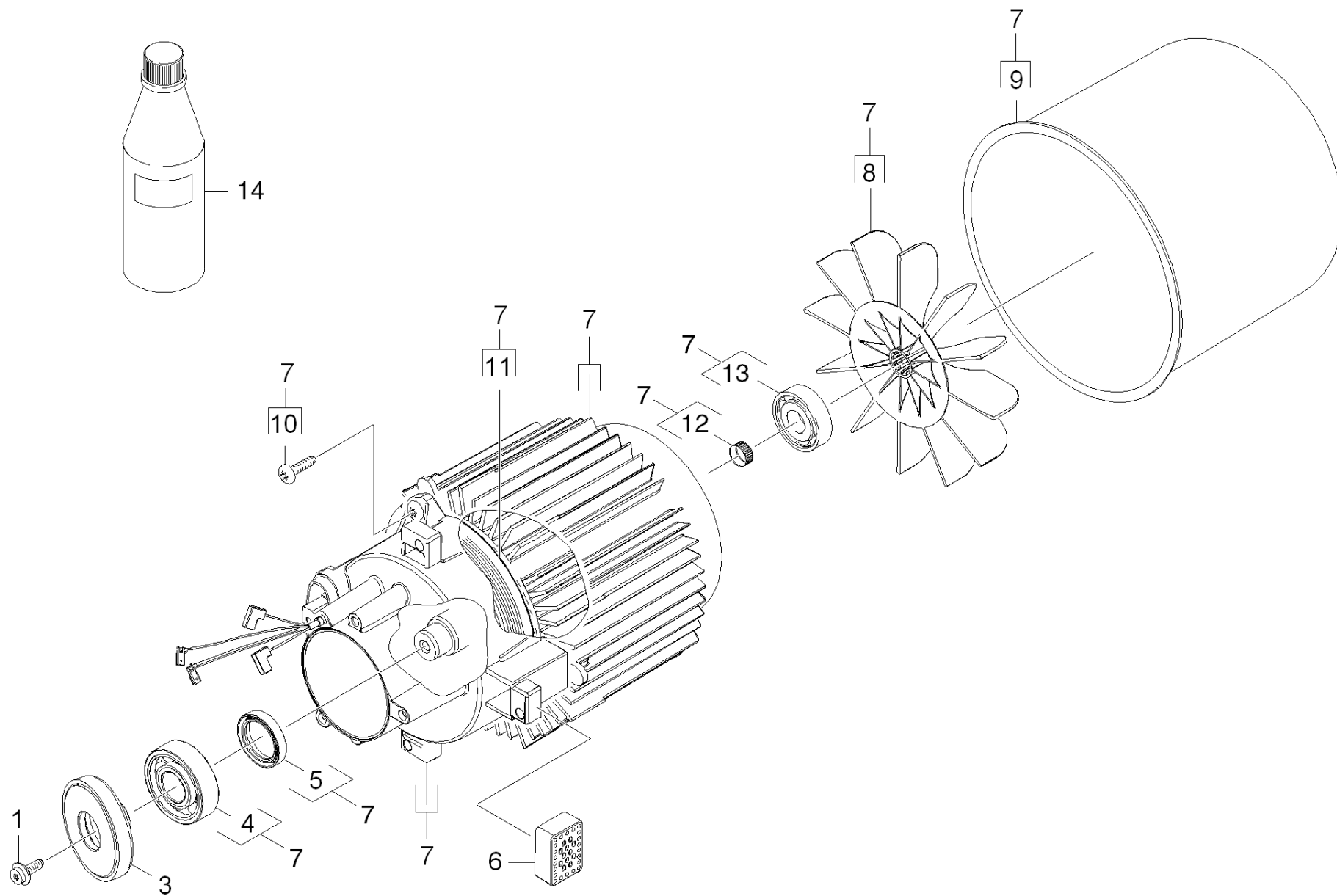
---



## 22 Piston guidance

---

ET/VT (spare/wear parts)	Pos	Material #	Name	Qty.	Unit
X-X	1	5.116-380.0	Washer piston guidance	3.000	ST
X-X	2	5.116-381.0	Supporting disk	3.000	ST
X-X	3	6.363-633.0	Grooved ring 12x18x6/5/1	3.000	ST
X	4	6.363-449.0	O-Ring seal 72x2 -NBR70	1.000	ST
X	5	2.060-000.0	Piston guidance for replacement	1.000	ST
X	6	4.553-004.0	Piston complete	3.000	ST



**30 Motor**

ET/VT (spare/wear parts)	Pos	Material #	Name	Qty.	Unit
	1	9.086-169.0	Wobble plate screw M8x16	1.000	ST
	3	6.401-196.0	Wobble plate	1.000	ST
	4	6.401-437.0	Ball bearing	1.000	ST
X	5	7.367-024.0	Radial shaft seal ring A26x37x7 -FKM DIN	1.000	ST
X-X	6	5.767-029.0	Rubber buffer	4.000	ST
	7	4.624-272.0	Motor replacement	1.000	ST
X	8	5.600-105.0	Blower wheel	1.000	ST
	9	5.692-102.0	Air circulation	1.000	ST
	10	6.303-320.0	Screw M 5x 20-St-R2R	3.000	ST
	11	5.363-743.0	Joint ring	1.000	ST
	12	6.343-218.0	Tolerance ring 15x6	1.000	ST
	13	7.401-128.0	Ball bearing 6202-2RS -Wälzl.St DIN 625	1.000	ST
X	14	6.288-219.0	Engine oil 1 L	1.000	ST

## 40 Accessories

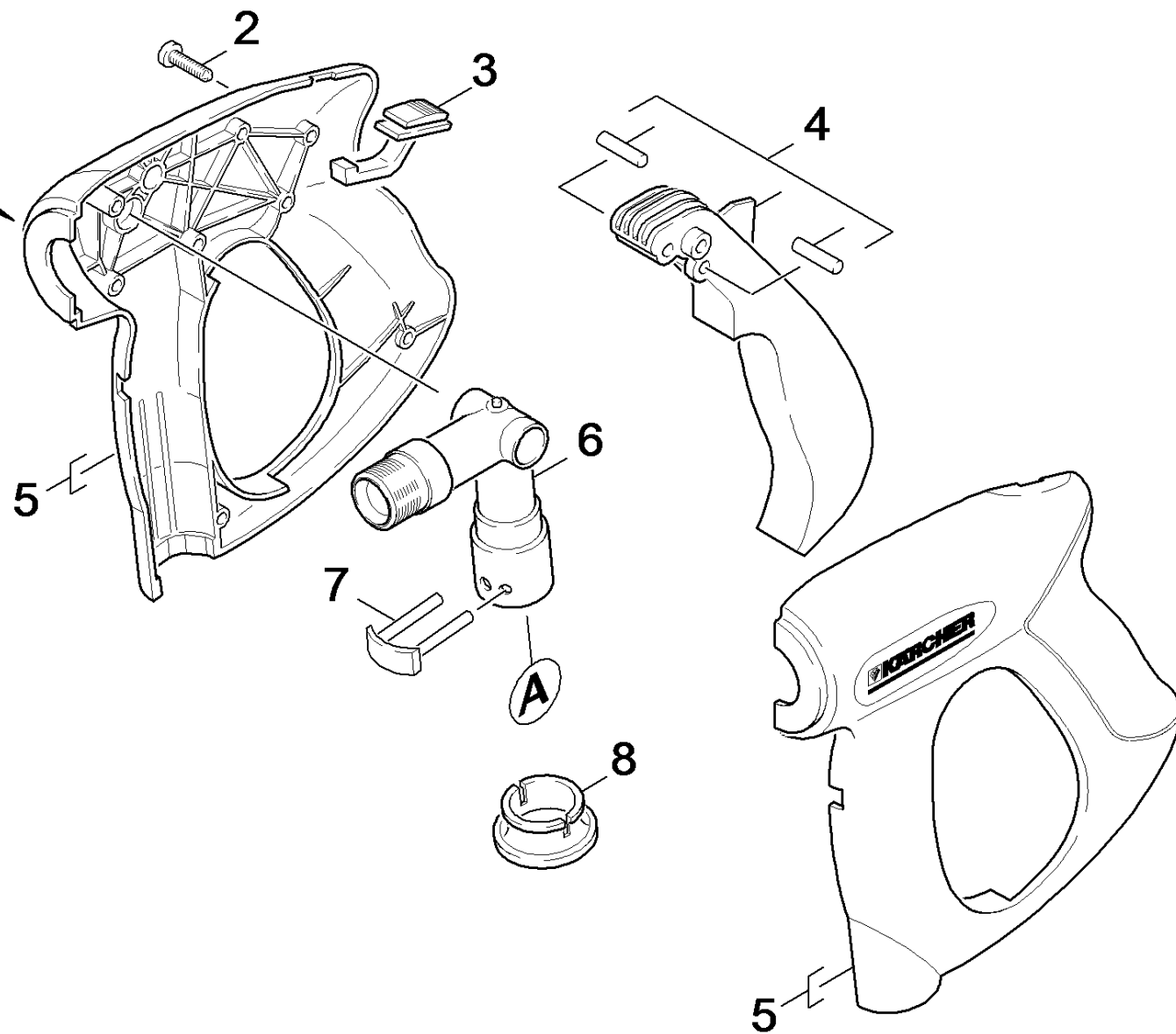
---

Pos	Name	Qty.	Unit	Footnote text
41	Hand trigger gun	1.000	ST	VERSION 1
42	Hand trigger gun	1.000	ST	VERSION 2
43	High pressure hose	1.000	ST	
44	Jet pipe	1.000	ST	
45	Triple jet nozzle	1.000	ST	

---



max.30MPa  
60°C

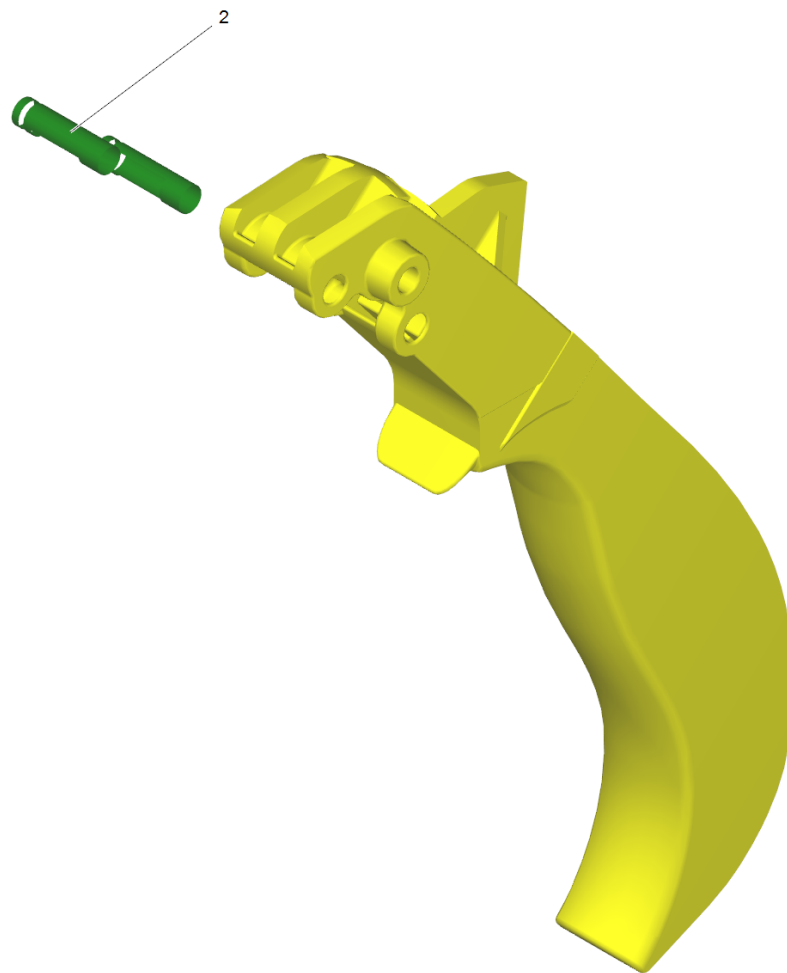


**41 Hand trigger gun**

---

ET/VT (spare/wear parts)	Pos	Material #	Name	Qty.	Unit
	2	7.303-096.0	Screw 4x22 -ST-10.9-R2R (IN6RD)	7.000	ST
	3	5.481-331.0	Slider	1.000	ST
	4	4.481-209.0	Lever complete	1.000	ST
	5	5.322-013.0	Handhold few cold water Easy-Press	1.000	ST
X	6	4.427-215.0	Manifold complete only for replacement	1.000	ST
X	7	4.037-013.0	Hook	1.000	ST
	8	5.110-596.0	Sleeve	1.000	ST

---

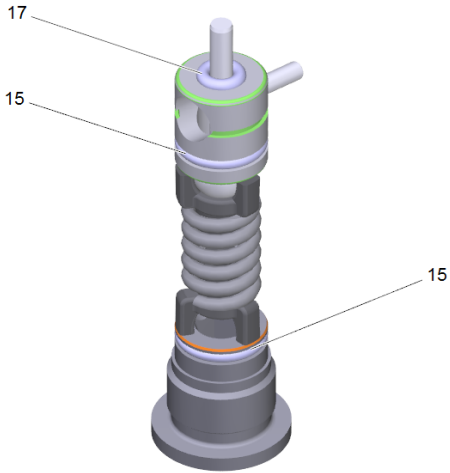
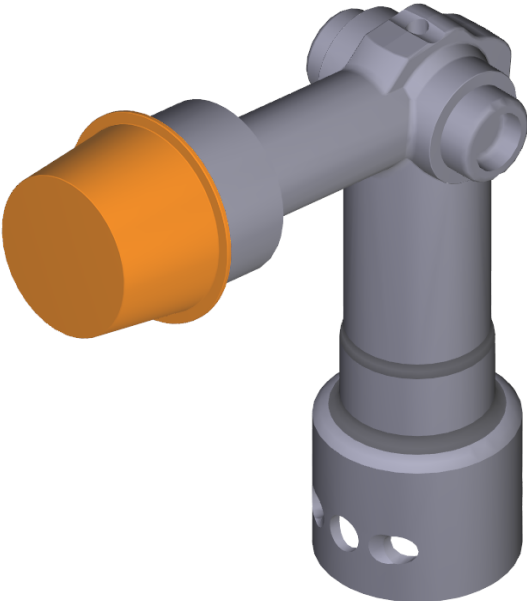


**4 Lever complete (4.481-209.0)**

---

Pos	Material #	Name	Qty.	Unit
2	5.314-119.0	Pin	2.000	ST

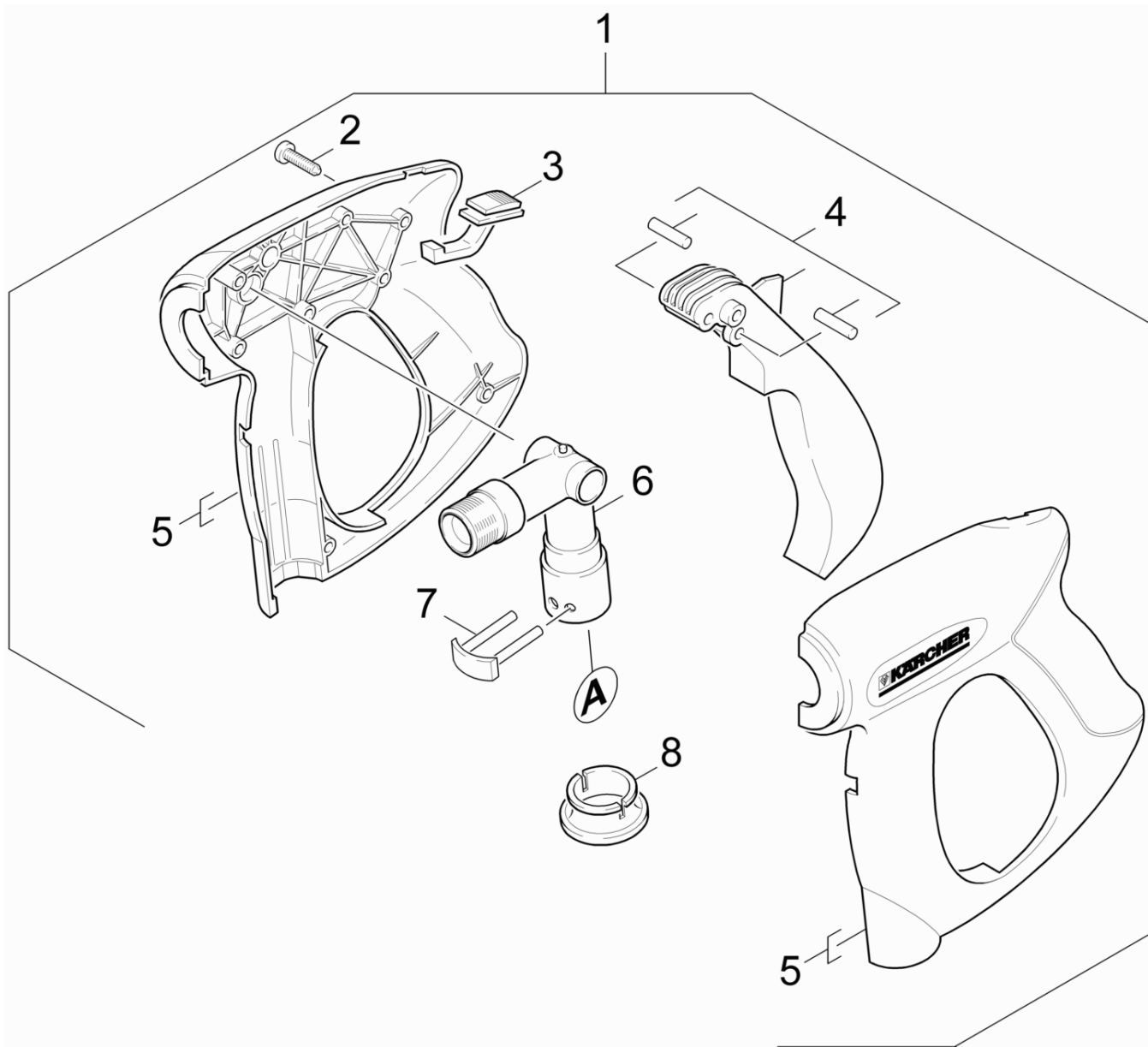
---



**6 Manifold complete only for replacement (4.427-215.0)**

---

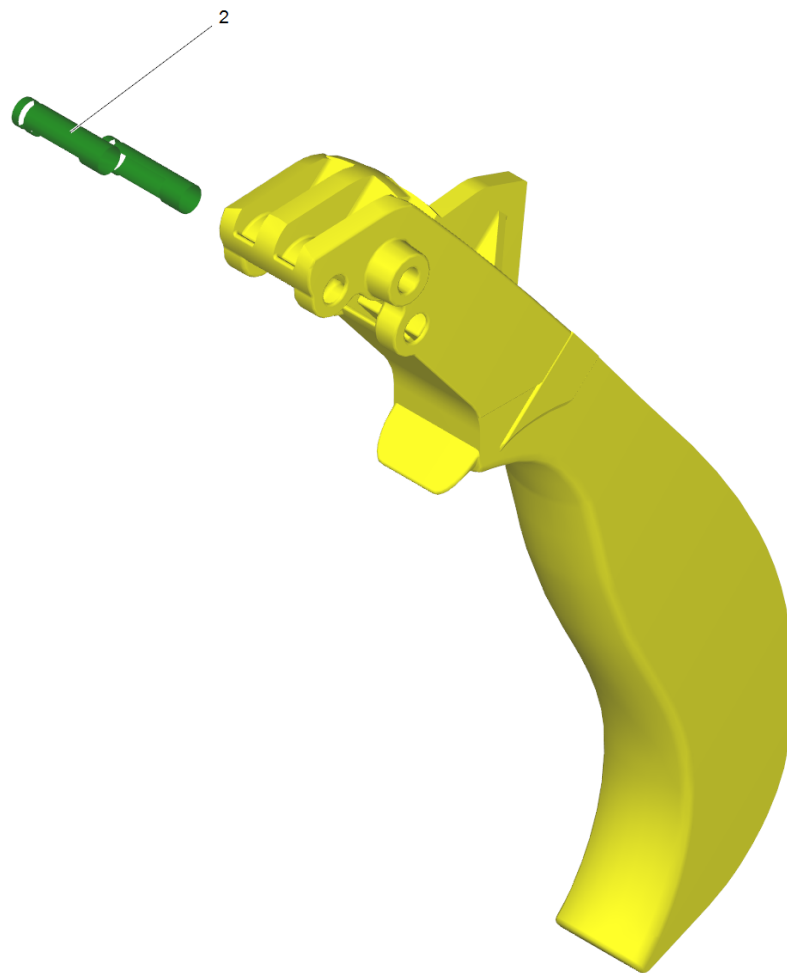
Pos	Material #	Name	Qty.	Unit
15	6.363-331.0	O-Ring seal 9,0 x 1,5	2.000	ST
17	6.363-330.0	O-Ring seal 2,9 x 1,78	1.000	ST



## 42 Hand trigger gun

ET/VT (spare/wear parts)	Pos	Material #	Name	Qty.	Unit
X-X	1	4.775-463.0	HAND TRIGGER GUN EASY PRESS	1.000	ST
	2	7.303-096.0	Screw 4x22 -ST-10.9-R2R (IN6RD)	7.000	ST
	3	5.481-331.0	Slider	1.000	ST
	4	4.481-209.0	Lever complete	1.000	ST
	5	5.321-669.0	Handhold few	1.000	ST
X	6	4.427-215.0	Manifold complete only for replacement	1.000	ST
X	7	4.037-013.0	Hook	1.000	ST
	8	5.110-596.0	Sleeve	1.000	ST



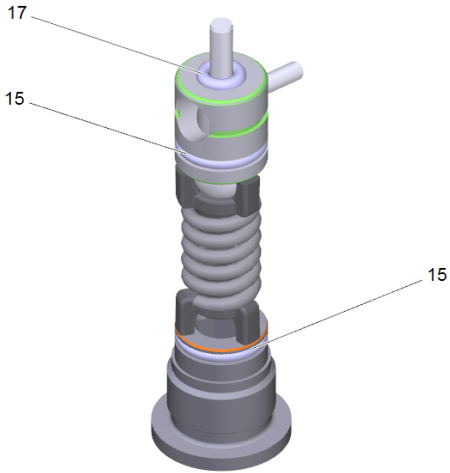
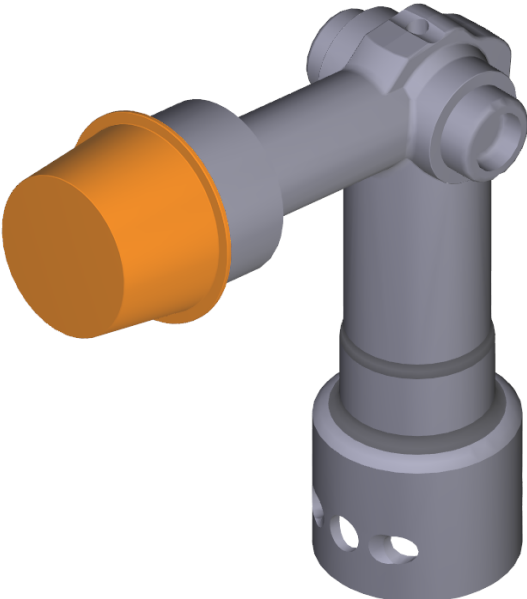


**4 Lever complete (4.481-209.0)**

---

Pos	Material #	Name	Qty.	Unit
2	5.314-119.0	Pin	2.000	ST

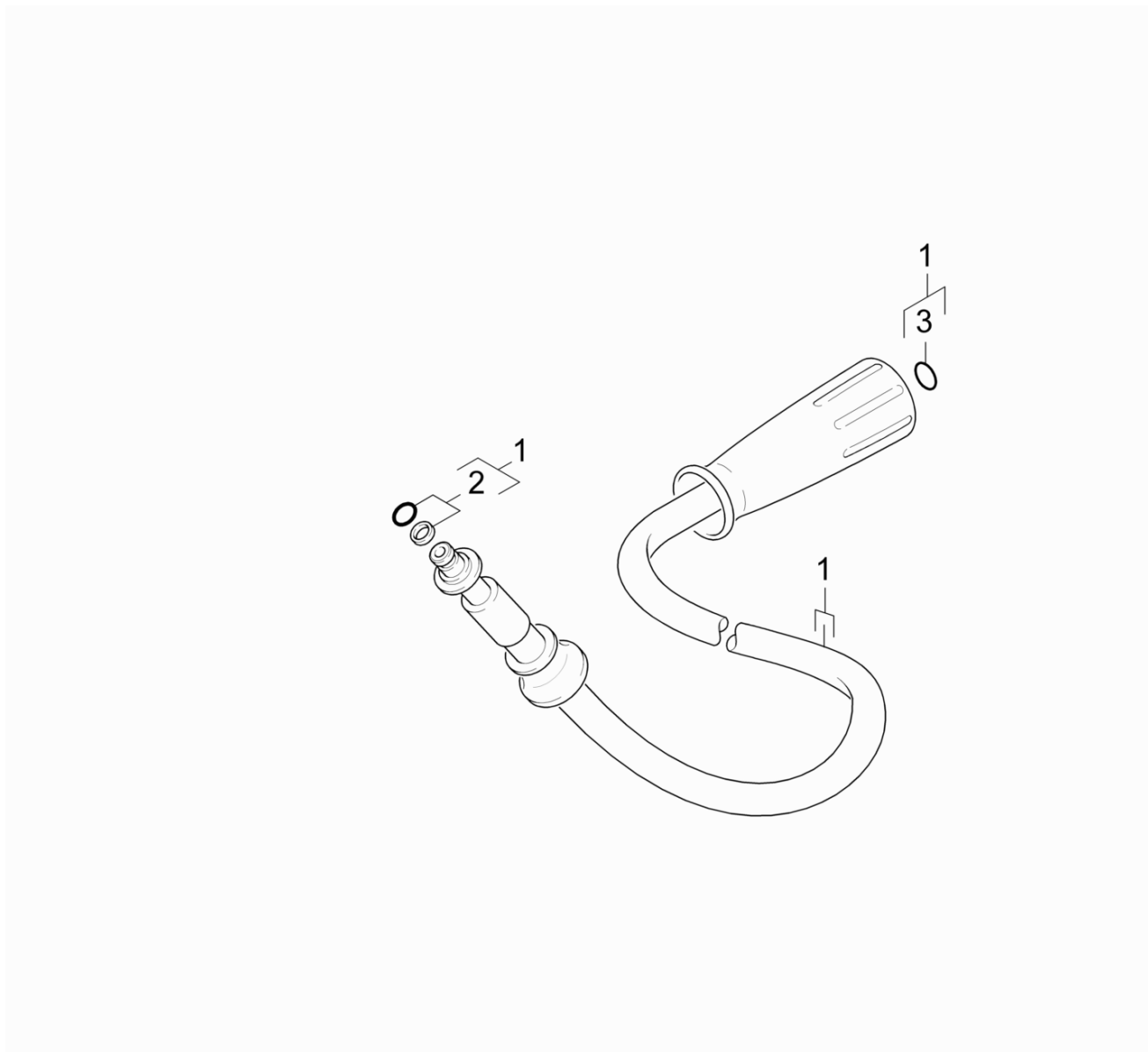
---



**6 Manifold complete only for replacement (4.427-215.0)**

---

Pos	Material #	Name	Qty.	Unit
15	6.363-331.0	O-Ring seal 9,0 x 1,5	2.000	ST
17	6.363-330.0	O-Ring seal 2,9 x 1,78	1.000	ST

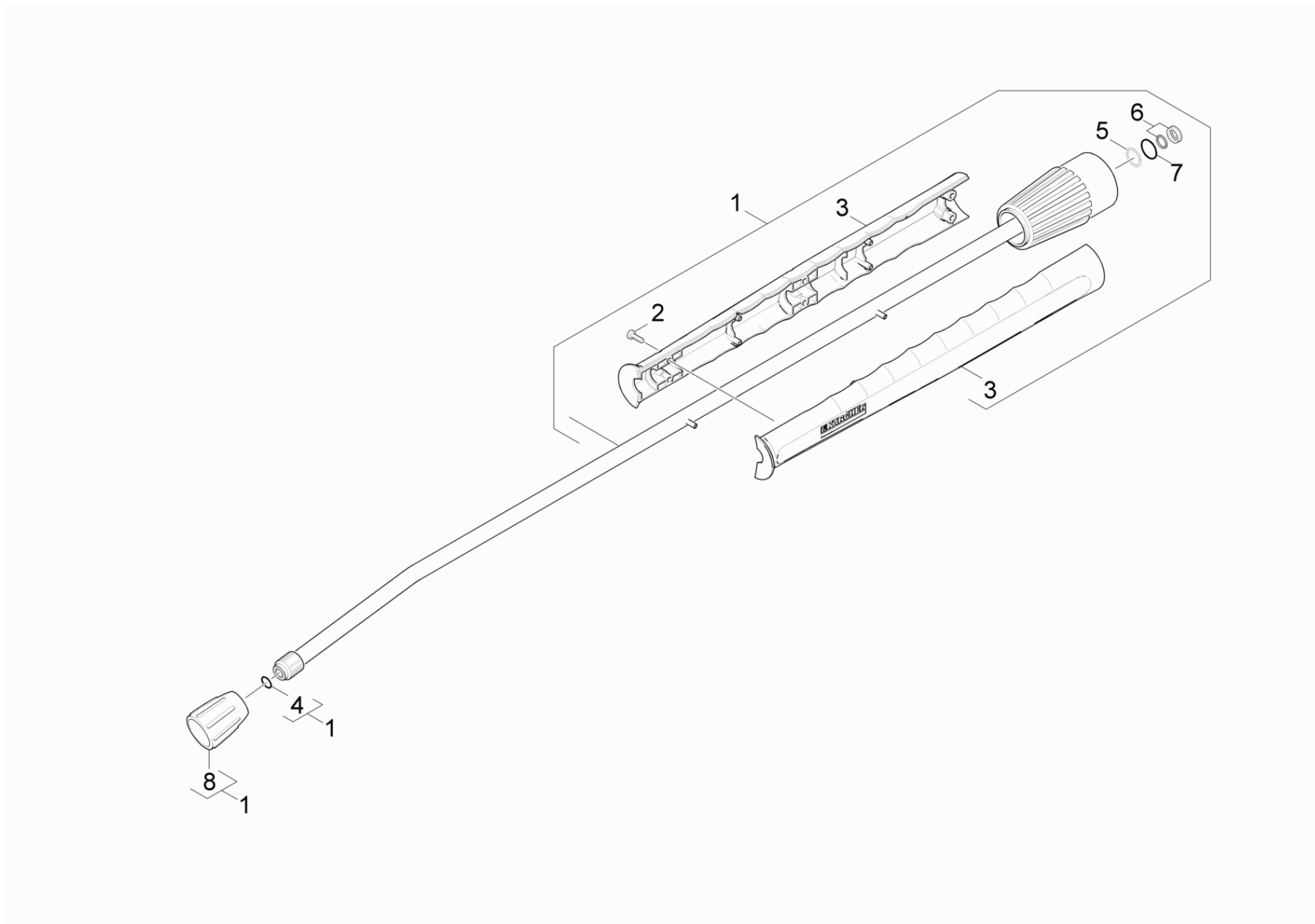


### 43 High pressure hose

---

ET/VT (spare/wear parts)	Pos	Material #	Name	Qty.	Unit
X-X	1	6.391-238.0	Hose assembly standard DN6 25MPa 10m	1.000	ST
X-X	2	4.363-691.0	O-Ring seal kpl. -nur fuer Ersatz-	1.000	ST
	3	2.880-990.0	Spare part set O-Ring 5x -Kaercher	1.000	ST

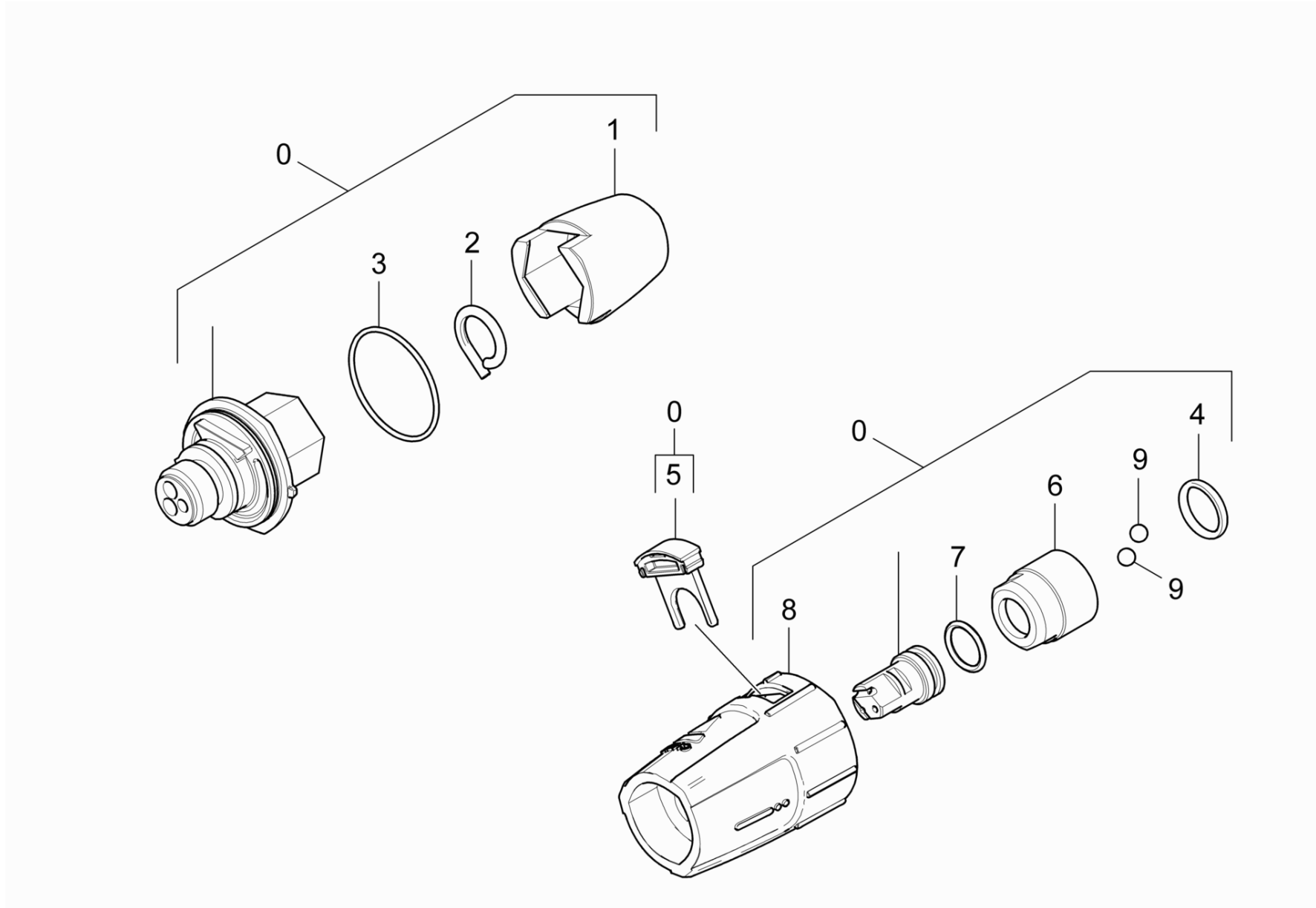
---



#### 44 Jet pipe

ET/VT (spare/wear parts)	Pos	Material #	Name	Qty.	Unit
X	1	4.760-663.0	Jet pipe packaged only for replacement	1.000	ST
	2	7.303-129.0	Screw 4x16 -10.9-R2R (K-In6Rd)	6.000	ST
	3	5.321-855.0	Handhold few jet pipe with welding bolt	1.000	ST
	4	2.880-990.0	Spare part set O-Ring 5x -Kaercher	1.000	ST
X-X	5	7.401-915.0	Sphere 2,5 G20 -1.4034 DIN 5401	20.000	ST
X-X	6	4.363-692.0	Grooved ring kpl. -nur fuer Ersatz-	1.000	ST
	7	6.362-524.0	O-Ring seal 17,0 X 1,5	1.000	ST
X-X	8	5.401-210.0	Screw connector part	1.000	ST





#### 45 Triple jet nozzle

ET/VT (spare/wear parts)	Pos	Material #	Name	Qty.	Unit
X-X	0	4.767-195.0	Triple jet nozzle only for replacement 0	1.000	ST
	1	5.394-530.0	Protection part complete	1.000	ST
	2	6.343-150.0	Pin 03	1.000	ST
	3	6.362-409.0	O-Ring seal 32,0 X 1,5	1.000	ST
	4	6.362-460.0	O-Ring seal 14,0 X 2,5-NBR 70	1.000	ST
	5	5.321-884.0	Clamp	1.000	ST
	6	5.311-225.0	Nut	1.000	ST
	7	6.362-480.0	O-Ring seal 12,42x 1,78	1.000	ST
	8	5.394-859.0	Protection part	1.000	ST
	9	7.401-902.0	Sphere 5 G20 -1.4034 DIN 5401	2.000	ST

**0 Triple jet nozzle only for replacement 0 (4.767-195.0)**

---

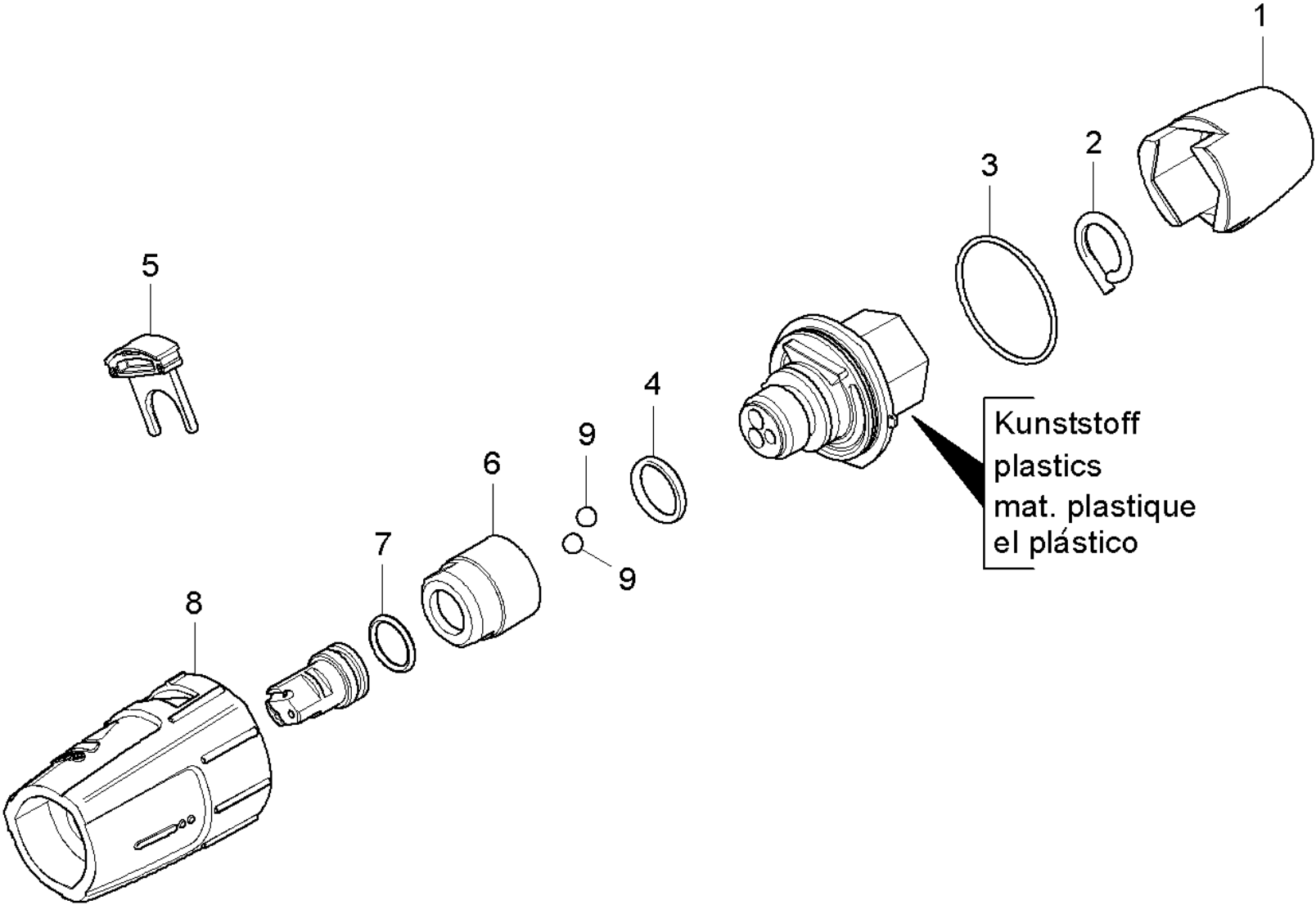
Pos	Name	Qty.	Unit
2	Spare parts list triple jet nozzle	1.000	ST

---

## 2 Spare parts list triple jet nozzle

---

Pos	Name	Qty.	Unit
10	Triple jet nozzle plastics	1.000	ST
20	Triple jet nozzle brass	1.000	ST

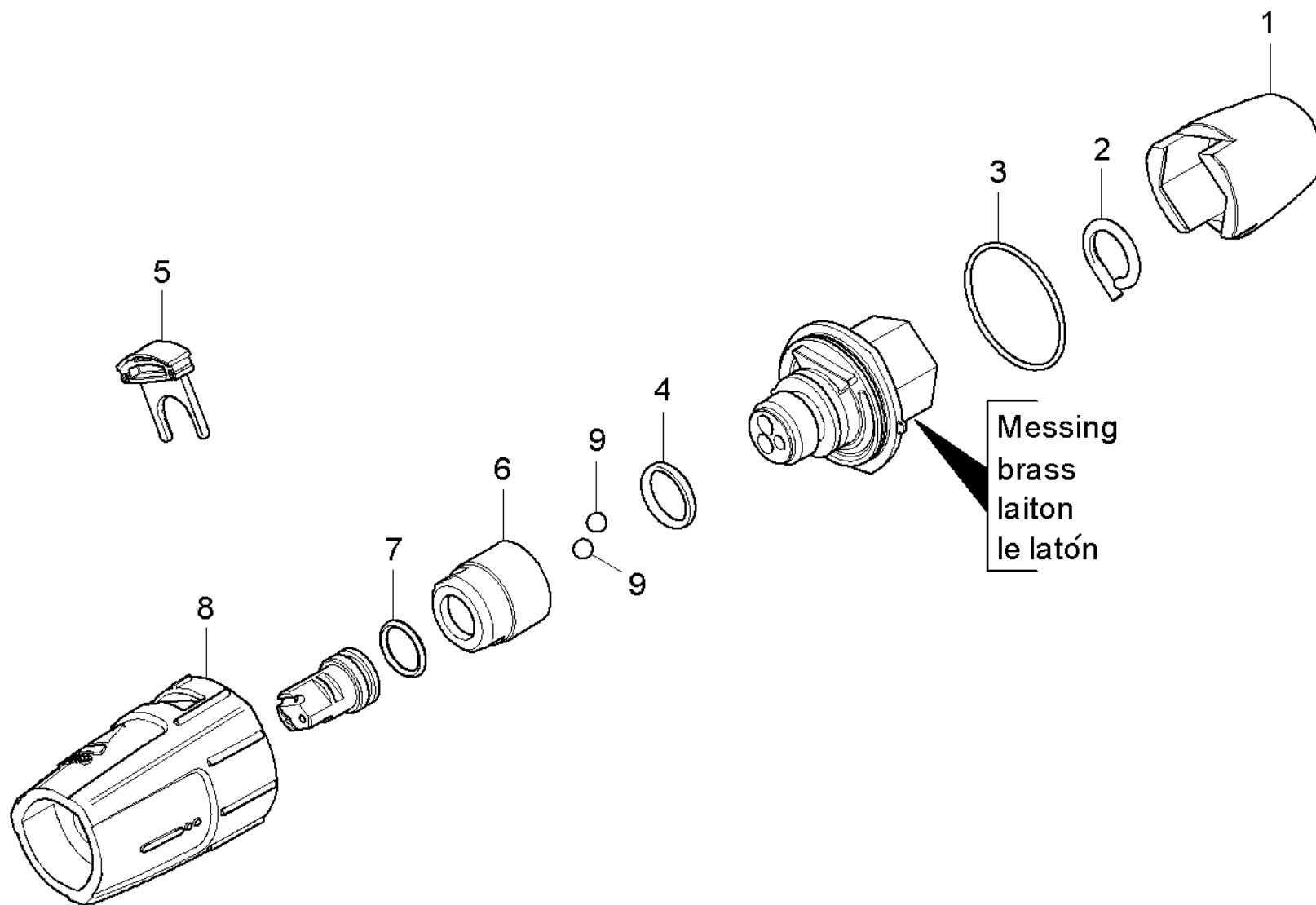


## 10 Triple jet nozzle plastics

---

Pos	Material #	Name	Qty.	Unit
1	5.394-530.0	Protection part complete	1.000	ST
2	6.343-150.0	Pin 03	1.000	ST
3	6.362-409.0	O-Ring seal 32,0 X 1,5	1.000	ST
4	7.362-039.0	O-Ring seal 15,5x1,5 -NBR70 DIN 3771	1.000	ST
5	5.321-884.0	Clamp	1.000	ST
6	5.311-236.0	Nut	1.000	ST
7	6.362-480.0	O-Ring seal 12,42x 1,78	1.000	ST
8	5.394-874.0	Protection part	1.000	ST
9	7.401-902.0	Sphere 5 G20 -1.4034 DIN 5401	2.000	ST

---



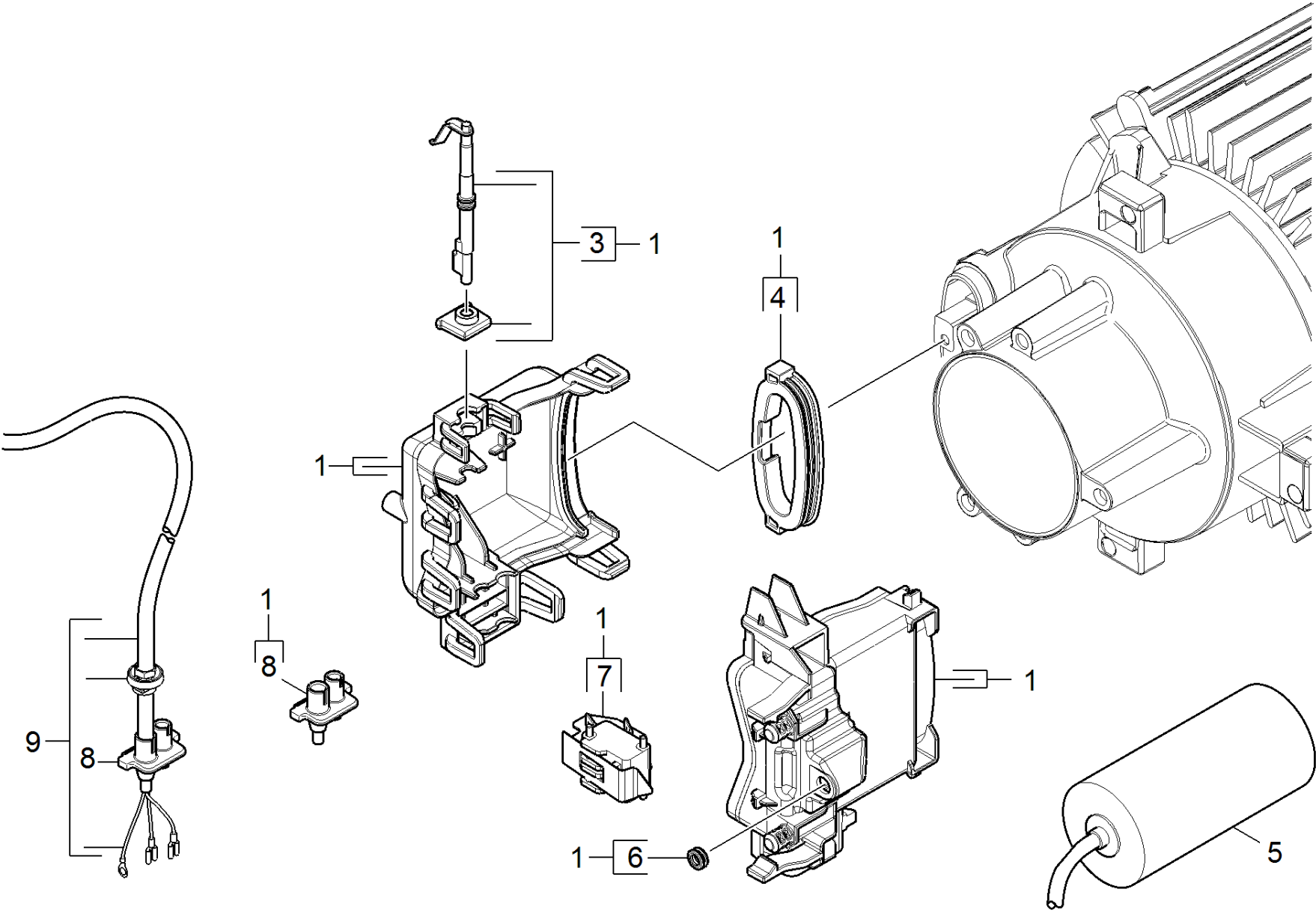
## 20 Triple jet nozzle brass

---

Pos	Material #	Name	Qty.	Unit
1	5.394-530.0	Protection part complete	1.000	ST
2	6.343-150.0	Pin 03	1.000	ST
3	6.362-409.0	O-Ring seal 32,0 X 1,5	1.000	ST
4	6.362-460.0	O-Ring seal 14,0 X 2,5-NBR 70	1.000	ST
5	5.321-884.0	Clamp	1.000	ST
6	5.311-225.0	Nut	1.000	ST
7	6.362-480.0	O-Ring seal 12,42x 1,78	1.000	ST
8	5.394-859.0	Protection part	1.000	ST
9	7.401-902.0	Sphere 5 G20 -1.4034 DIN 5401	2.000	ST

---





## 50 Electric box

ET/VT (spare/wear parts)	Pos	Material #	Name	Qty.	Unit
	1		Spare parts set electric box complete HD	1.000	ST
X-X	3	2.885-376.0	Selector shaft spare parts set HDC	1.000	ST
	4	5.363-761.0	Seal label	1.000	ST
	5	6.661-003.0	Capacitor 70 µF mit Kabel *CA *Ed	1.000	ST
	6	5.363-749.0	Seal control piston	1.000	ST
X	7	6.961-000.0	Micro switch	1.000	ST
	8	5.363-807.0	Seal cable HDC	1.000	ST
	9	6.650-398.0	Cable with plug *Ed	1.000	ST