

Spare parts list
(5.958-219.0) Spare parts list HD 1050 DE *EUR

Table of contents

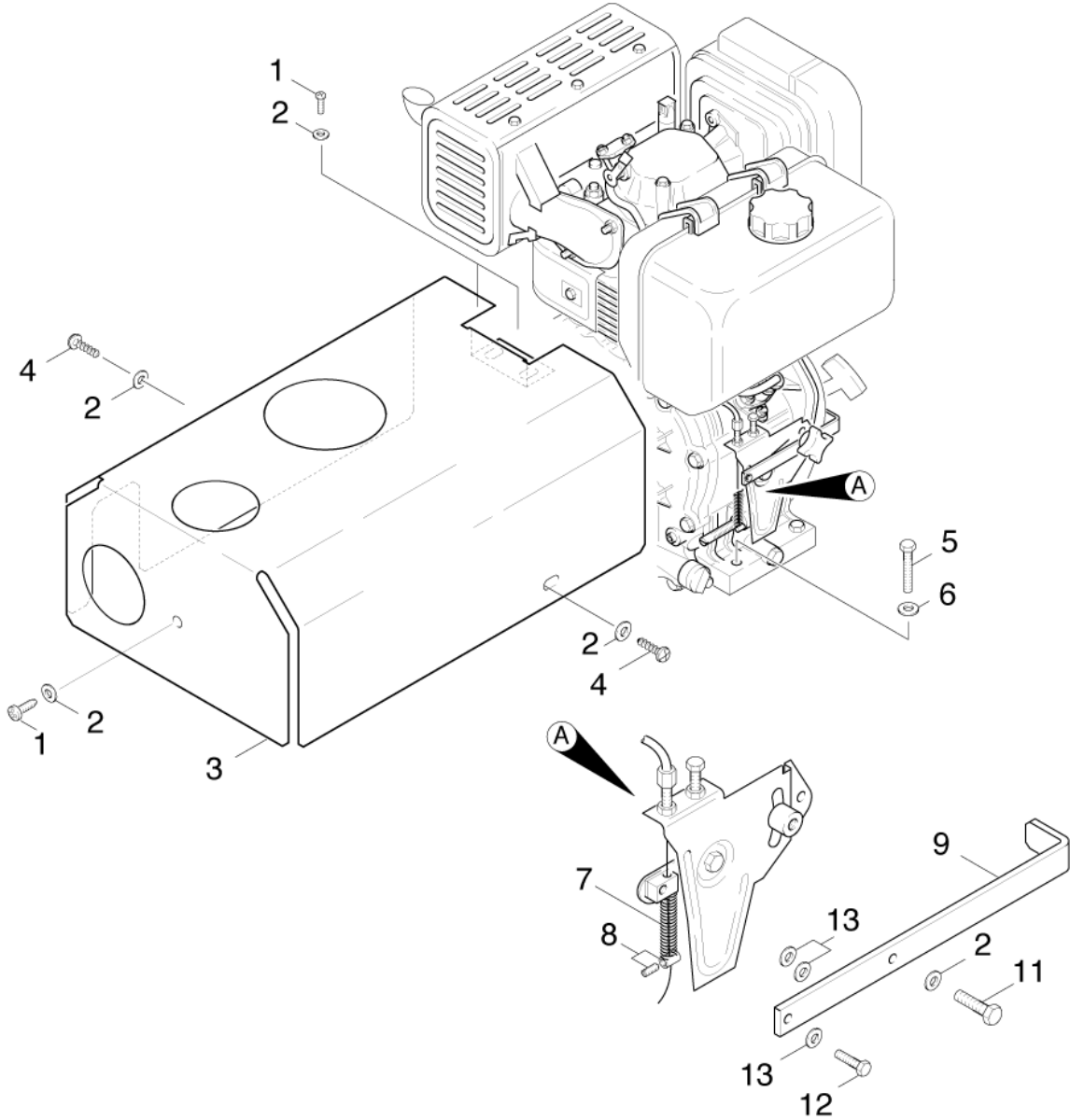
Spare parts list HD 1050 DE *EUR (5.958-219.0)	6
10 Individual parts (0.102-325.0).....	7
11 Individual parts cover (0.102-326.0).....	8
12 Base frame (0.102-327.0).....	10
20 Pump set (0.108-152.0).....	12
21 Cylinder head (0.107-588.0).....	13
22 Excess-current (0.107-589.0).....	15
23 Piston (0.107-590.0).....	17
24 Speed control (0.108-151.0).....	19
30 Motor (0.112-312.0).....	21
31 Motor (0.112-197.0).....	22
32 Motor (0.113-836.0).....	24
33 Transmission (0.112-303.0).....	26
40 Accessories (0.148-848.0).....	28
41 Hand trigger gun (0.146-436.0).....	29
18 Spare parts set (2.883-888.0).....	31
21 Spare part set O-Ring seal 5x (2.880-296.0).....	32
42 Hand trigger gun (0.148-843.0).....	33
6 Lever complete (4.481-209.0).....	35
8 Manifold complete only for replacement (4.427-215.0).....	36
12 Spare part set O-Ring seal 5x (2.880-296.0).....	37
43 Jet pipe (0.147-369.0).....	38
44 Jet pipe (0.148-571.0).....	40
4 Spare part set O-Ring seal 5x (2.880-296.0).....	42
45 Triple jet nozzle (0.146-444.0).....	43
200 Special tools (0.120-743.0).....	44
201 Tool pressure gauge (0.120-002.0).....	45
202 Tool valve pliers (0.120-003.0).....	47
203 Tool measuring instrument current AC/DC, (0.120-008.0).....	49
204 Tool support mandrel O-Ring seal -D18,7m (0.120-019.0).....	51
205 Tool stop cock (0.120-004.0).....	53
206 Tool support mandrel O-Ring seal -D18,7m (0.120-019.0).....	55
207 Tool internal puller D8-12mm (0.120-062.0).....	57
208 Tool countersupport internal puller (0.120-060.0).....	59
209 Tool internal puller D14-19mm (0.120-063.0).....	61
210 Tool hydrometer acid (0.120-087.0).....	63
220 Tool oil pump suction (0.120-092.0).....	65
230 Tool magnetic field tester (0.120-104.0).....	67
240 Tool oil pump extraction system -12V (0.120-139.0).....	69
250 Tool adapter System2000;M22x1,5 (0.120-159.0).....	71
260 Tool RPM meter mechanical (0.120-165.0).....	73

Spare parts list HD 1050 DE *EUR (5.958-219.0)

Pos	Name	Qty.	Unit	from ser.nr.	up to ser.nr.
10	Individual parts	1.000	ST	0000000000	0000000000
20	Pump set	1.000	ST	0000000000	0000000000
30	Motor	1.000	ST	0000000000	0000000000
40	Accessories	1.000	ST	0000000000	0000000000
200	Special tools	1.000	ST		

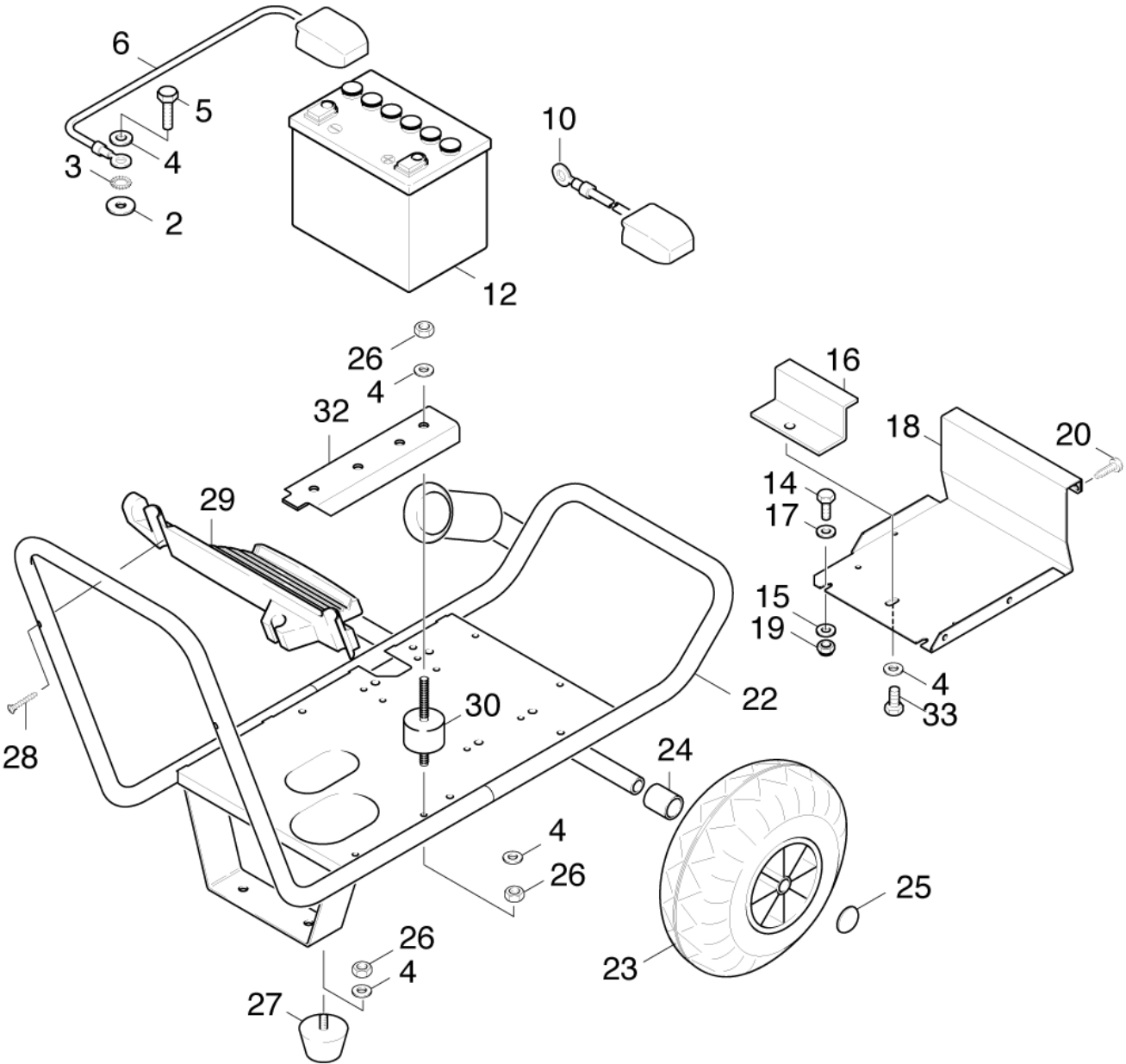
10 Individual parts (0.102-325.0)

Pos	Name	Qty.	Unit	from ser.nr.	up to ser.nr.
11	Individual parts cover	1.000	ST	0000000000	0000000000
12	Base frame	1.000	ST	0000000000	0000000000



11 Individual parts cover (0.102-326.0)

ET/VT (spare/wear parts)	Pos	Material #	Name	Qty.	Unit	from ser.nr.	up to ser.nr.
X	1	6.303-193.0	Cylinder head screw M 6X 12-8.8-R2R	3.000	ST	0000000000	0000000000
X-X	2	7.312-003.0	Washer 6 -200HV-A3E ISO 7090	6.000	ST	0000000000	0000000000
	3	5.067-228.0	Cover 1050 DE	1.000	ST	0000000000	0000000000
X	4	7.303-046.0	Screw M6x12 -St-R3R (In6Rd)	2.000	ST	0000000000	0000000000
	5	7.304-404.0	Hexagonal head screw M8x40-8.8-A2E ISO	3.000	ST	0000000000	0000000000
X-X	6	7.312-004.0	Washer 8 -200HV-A3E ISO 7090	3.000	ST	0000000000	0000000000
X	7	5.332-264.0	Helical spring	1.000	ST	0000000000	0000000000
	8	6.431-114.0	Clamping bolt	1.000	ST	0000000000	0000000000
	9	5.017-042.0	Angle	1.000	ST	0000000000	0000000000
X-X	11	7.306-105.0	Screw M6x30 -8.8-R3R (In6Rd)	1.000	ST	0000000000	0000000000
	12	7.306-057.0	Screw M4x10 -8.8-R2R (In6Rd)	1.000	ST	0000000000	0000000000
	13	5.115-962.0	Washer	3.000	ST	0000000000	0000000000

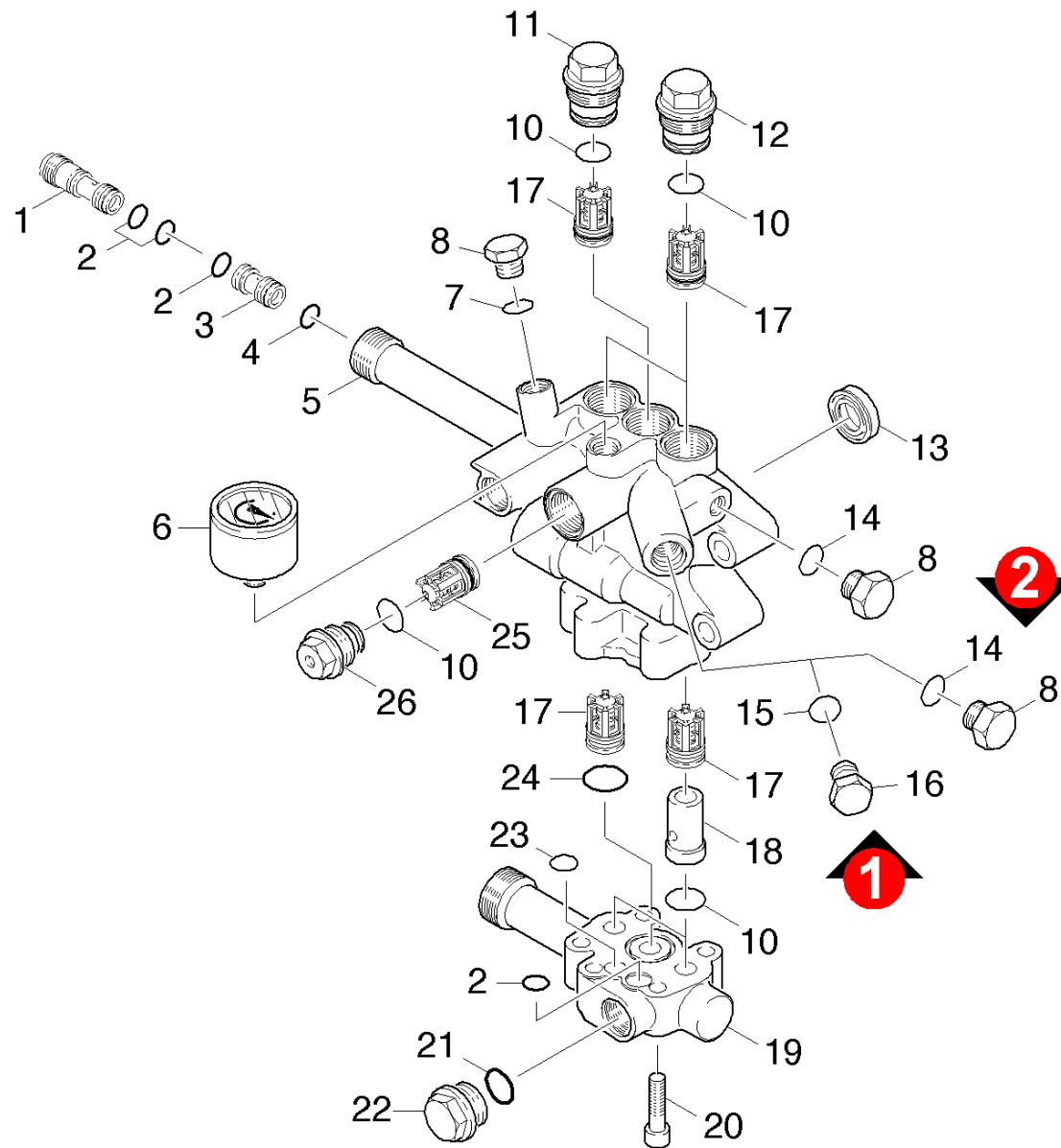


12 Base frame (0.102-327.0)

ET/VT (spare/wear parts)	Pos	Material #	Name	Qty.	Unit	from ser.nr.	up to ser.nr.
	2	7.312-277.0	Washer 8-200HV-A2E ISO7093-1	1.000	ST	0000000000	0000000000
X	3	7.312-166.0	Toothed lock washer A8,4-FSt-A3E DIN 67	1.000	ST	0000000000	0000000000
X-X	4	7.312-004.0	Washer 8 -200HV-A3E ISO 7090	10.000	ST	0000000000	0000000000
	5	7.304-404.0	Hexagonal head screw M8x40-8.8-A2E ISO	1.000	ST	0000000000	0000000000
	6	4.822-051.0	Cable negative black AWG16x330mm	1.000	ST	0000000000	0000000000
	10	4.822-050.0	Cable PLUS L=780	1.000	ST	0000000000	0000000000
	12	6.654-026.0	Battery 36AH 12V	1.000	ST	0000000000	0000000000
	14	7.306-090.0	Screw M6x16 -8.8-R3R (In6Rd)	2.000	ST	0000000000	0000000000
X-X	15	7.312-003.0	Washer 6 -200HV-A3E ISO 7090	2.000	ST	0000000000	0000000000
	16	4.038-759.0	Holder	1.000	ST	0000000000	0000000000
X	17	7.312-276.0	Washer 6 -200HV-A2E ISO7093-1	2.000	ST	0000000000	0000000000
	18	4.042-875.0	Holder complete	1.000	ST	0000000000	0000000000
X	19	7.311-512.0	Hexagon nut M 6-8-A2E ISO 7040	8.000	ST	0000000000	0000000000
	20	6.303-105.0	Screw M6x20-ST-A2R DIN 7500-1	2.000	ST	0000000000	0000000000
	22	4.050-392.0	Frame	1.000	ST	0000000000	0000000000
X-X	23	6.435-310.0	Wheel	2.000	ST	0000000000	0000000000
X	24	5.110-378.0	Sleeve	2.000	ST	0000000000	0000000000
X-X	25	6.343-137.0	Quick-fastener	2.000	ST	0000000000	0000000000
X-X	26	7.311-427.0	Hexagon nut M8 -04-A2E ISO 10511	10.000	ST	0000000000	0000000000
	27	6.339-100.0	Rubber buffer	2.000	ST	0000000000	0000000000
	28	7.303-133.0	Sheet metal screw ST4,8X 38-ST-A2R (IN6	2.000	ST	0000000000	0000000000
	29	5.321-273.0	Handhold	1.000	ST	0000000000	0000000000
X-X	30	6.339-014.0	Rubber buffer	4.000	ST	0000000000	0000000000
	32	4.022-045.0	U-Section complete	2.000	ST	0000000000	0000000000
	33	7.304-395.0	Hexagonal head screw M8x16-8.8-A2E ISO	1.000	ST	0000000000	0000000000

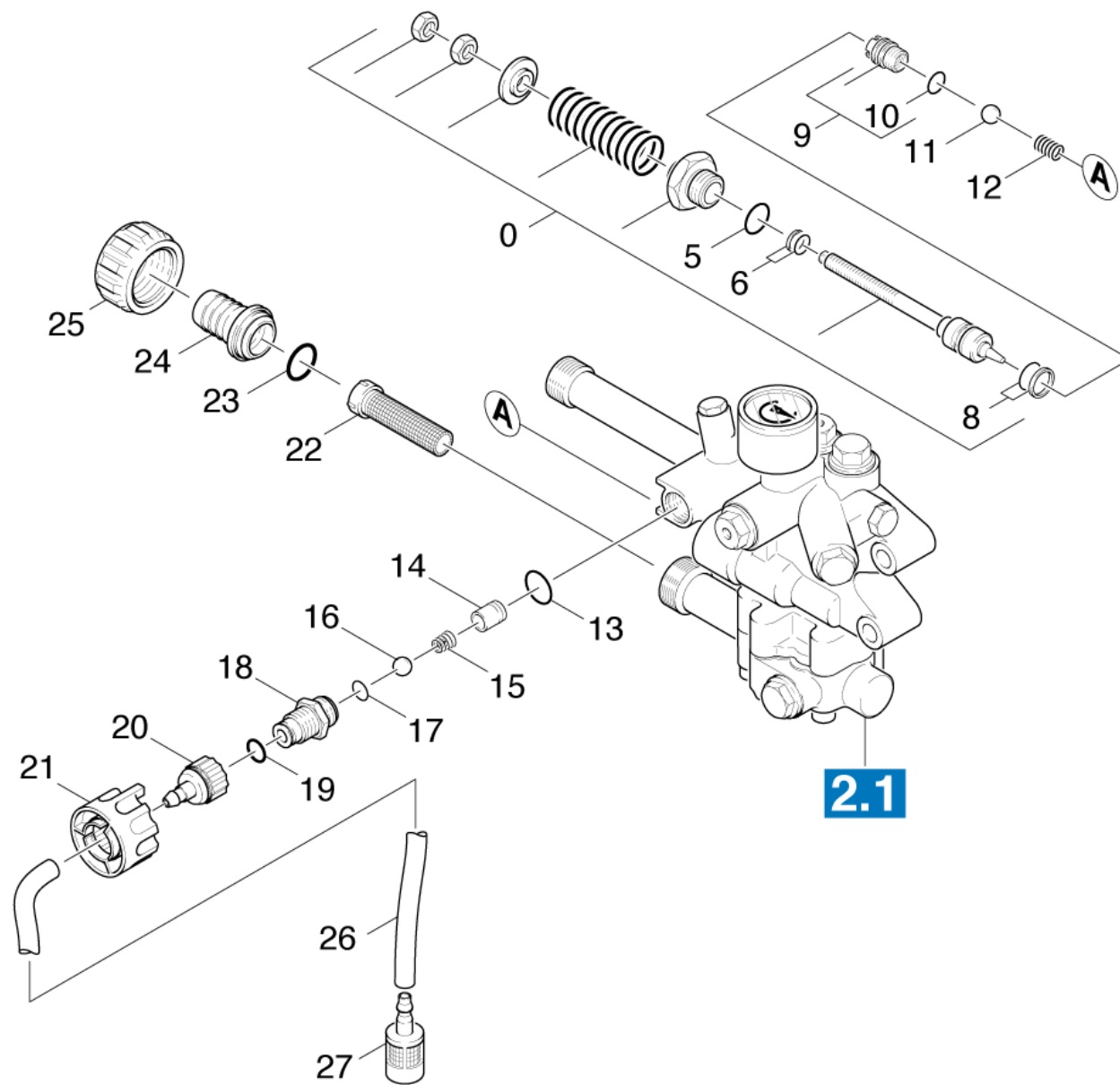
20 Pump set (0.108-152.0)

Pos	Name	Qty.	Unit	from ser.nr.	up to ser.nr.
21	Cylinder head	1.000	ST	0000000000	0000000000
22	Excess-current	1.000	ST	0000000000	0000000000
23	Piston	1.000	ST	0000000000	0000000000
24	Speed control	1.000	ST	0000000000	0000000000



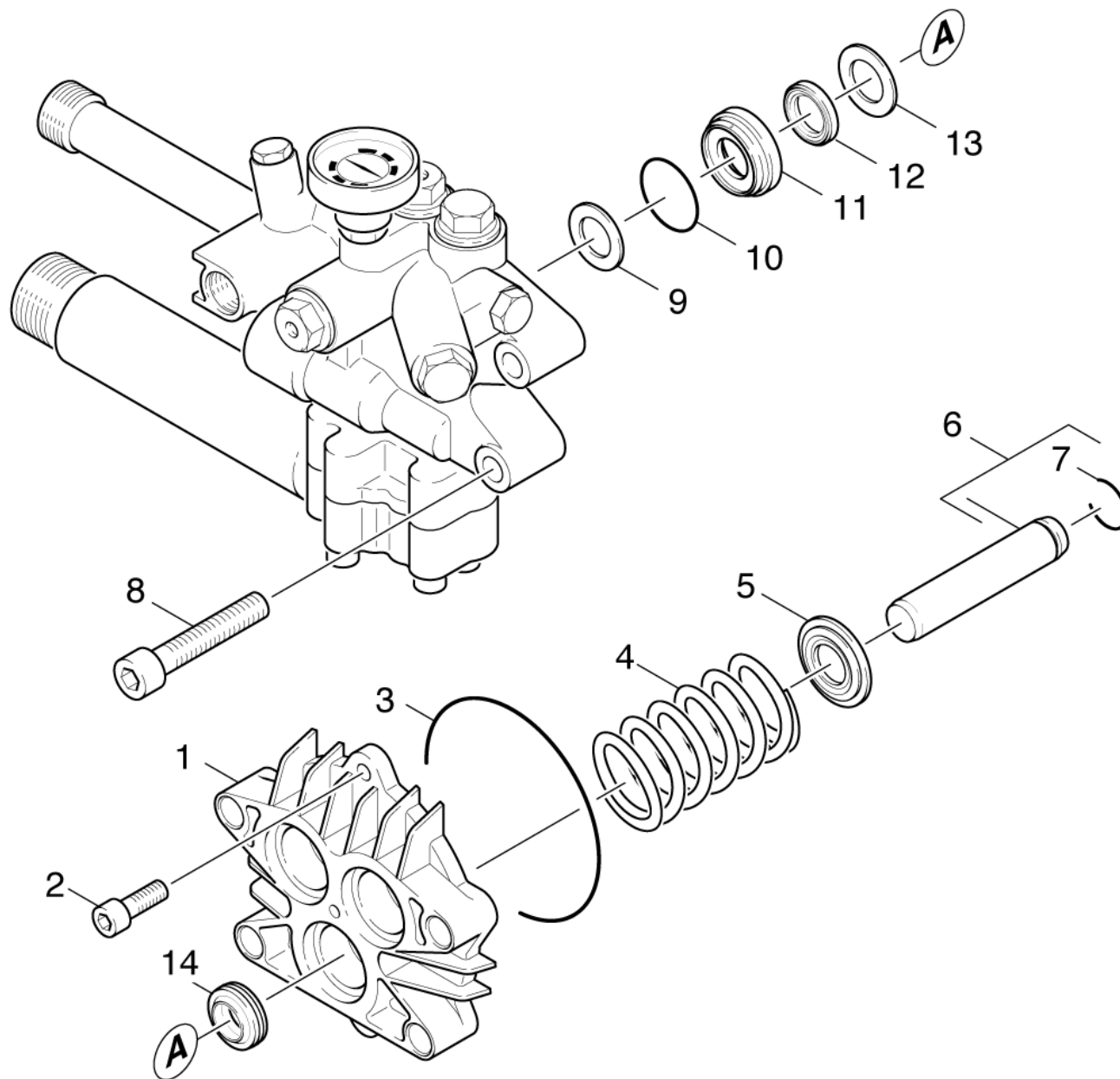
21 Cylinder head (0.107-588.0)

ET/VT (spare/wear parts)	Pos	Material #	Name	Qty.	Unit	from ser.nr.	up to ser.nr.	var. information
X-X	1	5.769-141.0	Nozzle insert	1.000	ST	0000000000	0000000000	
X-X	2	6.362-384.0	O-Ring seal 9x1,5 - NBR 70	4.000	ST	0000000000	0000000000	
X	3	5.769-143.0	Nozzle insert	1.000	ST	0000000000	0000000000	
	4	6.362-388.0	O-Ring seal 8,0x1,5 -EPDM 70	1.000	ST	0000000000	0000000000	
	5	4.551-057.0	Cylinder head only for replacement	1.000	ST	0000000000	0000000000	
X-X	6	6.421-214.0	Pressure gauge 0-300 BAR	1.000	ST	0000000000	0000000000	
	7	6.362-113.0	O-Ring seal 6,0 x 2,0 NBR 70	1.000	ST	0000000000	0000000000	
	8	5.411-070.0	Screw plug	2.000	ST	0000000000	0000000000	M10X1
X-X	10	6.362-481.0	O-Ring seal 14,0 x 2,0 NBR 80	6.000	ST	0000000000	0000000000	
X	11	5.583-160.0	Valve screw	1.000	ST	0000000000	0000000000	
X-X	12	5.583-146.0	Valve screw	2.000	ST	0000000000	0000000000	
X-X	13	6.365-408.0	Grooved ring 16x24x5.3	3.000	ST	0000000000	0000000000	
	14	6.362-101.0	O-Ring seal 8 X 2	1.000	ST	0000000000	0000000000	
X	15	6.362-528.0	O-Ring seal 9,5 X 2,0	1.000	ST	0000000000	0000000000	
	16	5.411-102.0	Screw plug	1.000	ST	0000000000	0000000000	M12X1,5
X-X	17	2.884-512.0	Valve (3 Stueck)	1.000	ST	0000000000	0000000000	
X-X	18	5.110-608.0	Sleeve	2.000	ST	0000000000	0000000000	
	19	5.060-888.0	Valve housing swivel arm Hobbock	1.000	ST	0000000000	0000000000	
X-X	20	7.306-044.0	Cylinder head screw M8x35 -8.8-A2E ISO4	5.000	ST	0000000000	0000000000	
	21	6.362-427.0	O-Ring seal 15,0x2,0	1.000	ST	0000000000	0000000000	
	22	7.382-235.0	Screw plug M18x1,5-A-CuZn DIN 7604	1.000	ST	0000000000	0000000000	
X-X	23	6.363-045.0	O-Ring seal 8X1,25 NBR	1.000	ST	0000000000	0000000000	
X-X	24	6.362-547.0	O-Ring seal 20,0x1,5-NBR 70	1.000	ST	0000000000	0000000000	
X-X	25	4.580-323.0	Valve complete	1.000	ST	0000000000	0000000000	
	26	5.583-155.0	Valve screw	1.000	ST	0000000000	0000000000	



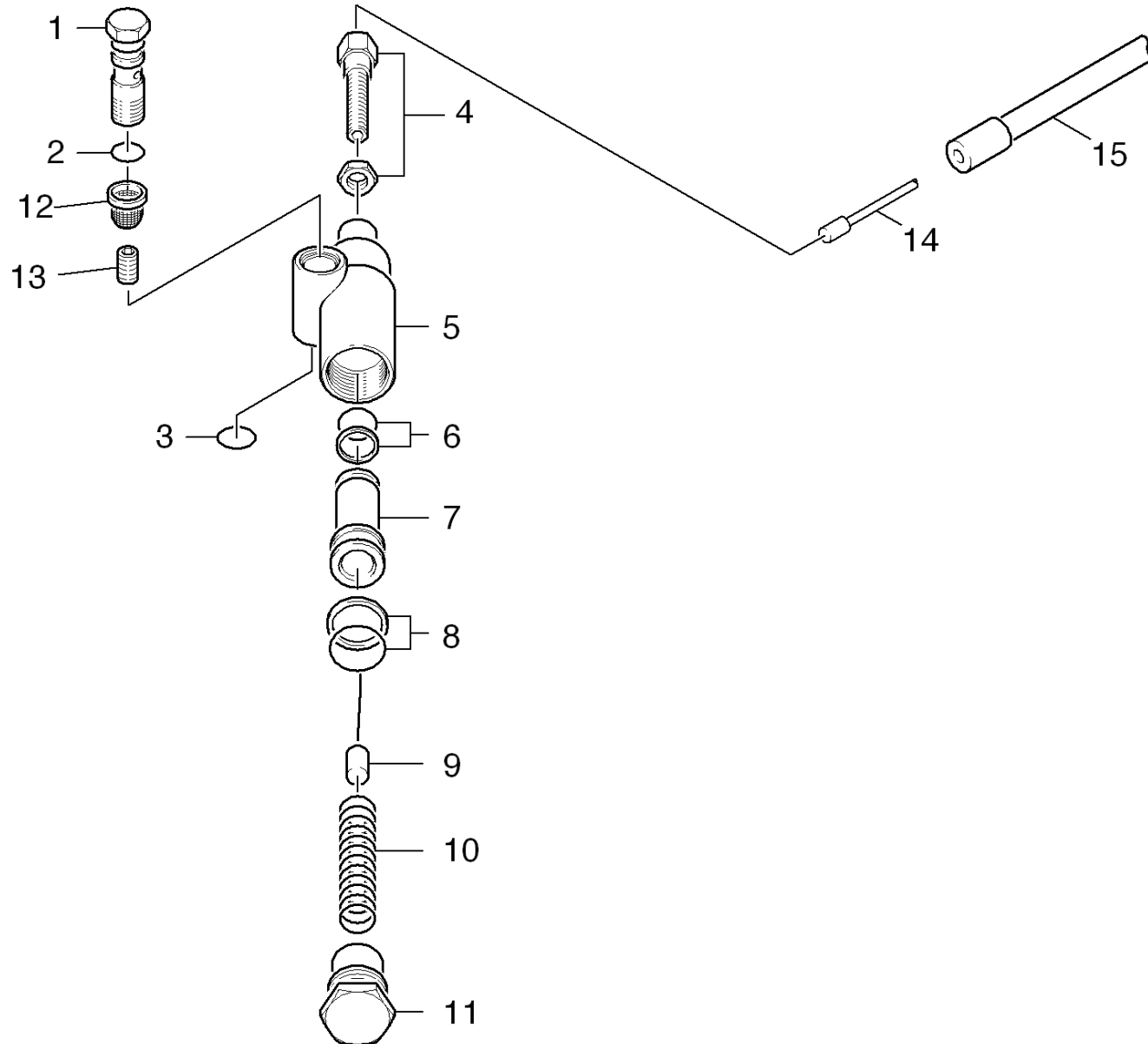
22 Excess-current (0.107-589.0)

ET/VT (spare/wear parts)	Pos	Material #	Name	Qty.	Unit	from ser.nr.	up to ser.nr.
X-X	0	4.591-035.0	Overflow valve	1.000	ST	0000000000	0000000000
X-X	5	6.362-445.0	O-Ring seal 16,0 X 2,4-NBR 80	1.000	ST	0000000000	0000000000
X-X	6	6.362-365.0	O-Ring seal complete 1ST.-R.- 7,65X 1,7	1.000	ST	0000000000	0000000000
X-X	8	6.362-575.0	O-Ring seal 12,42 KOMPL	1.000	ST	0000000000	0000000000
X-X	9	4.581-019.0	Valve seat	1.000	ST	0000000000	0000000000
X-X	10	6.362-858.0	O-Ring seal 11,0 X 1,5	1.000	ST	0000000000	0000000000
X-X	11	7.401-907.0	Sphere 3/8 G200-1.4301 DIN 5401	1.000	ST	0000000000	0000000000
X-X	12	5.332-999.0	Helical spring	1.000	ST	0000000000	0000000000
X-X	13	6.362-533.0	O-Ring seal 14,0 X 1,5-NBR 70	1.000	ST	0000000000	0000000000
	14	5.028-692.0	Tube	1.000	ST	0000000000	0000000000
X-X	15	5.332-124.0	Helical spring	1.000	ST	0000000000	0000000000
	16	7.401-908.0	Sphere 7 G300 -1.4301 DIN 5401	1.000	ST	0000000000	0000000000
X-X	17	6.362-383.0	O-Ring seal 6,0 X 2,0	1.000	ST	0000000000	0000000000
	18	5.402-523.0	Screw union	1.000	ST	0000000000	0000000000
X-X	19	6.362-151.0	O-Ring d. 10 x 2 NBR 70	1.000	ST	0000000000	0000000000
X-X	20	5.443-281.0	Hose stem	1.000	ST	0000000000	0000000000
	21	5.321-318.0	Handhold	1.000	ST	0000000000	0000000000
X-X	22	6.414-282.0	Strainer	1.000	ST	0000000000	0000000000
X-X	23	6.362-078.0	O-Ring seal 13,3x2,4	1.000	ST	0000000000	0000000000
X-X	24	5.443-291.0	Hose stem	1.000	ST	0000000000	0000000000
	25	5.311-071.0	Nut	1.000	ST	0000000000	0000000000
	26	6.388-216.0	Hose DN 5	1.000	M	0000000000	0000000000
	27	5.731-652.0	Filter with weight	1.000	ST	0000000000	0000000000



23 Piston (0.107-590.0)

ET/VT (spare/wear parts)	Pos	Material #	Name	Qty.	Unit	from ser.nr.	up to ser.nr.
	1	5.060-676.0	Housing	1.000	ST	0000000000	0000000000
X	2	7.306-023.0	Cylinder head screw M6x25 -8.8-A2E ISO4	2.000	ST	0000000000	0000000000
X-X	3	6.362-963.0	O-Ring seal 88,57X 2,62	1.000	ST	0000000000	0000000000
X-X	4	5.332-403.0	Helical spring	3.000	ST	0000000000	0000000000
X-X	5	5.115-689.0	Washer	3.000	ST	0000000000	0000000000
X-X	6	4.553-172.0	Piston complete	3.000	ST	0000000000	0000000000
	7	7.343-478.0	Snap ring A16 -FST DIN 7993	3.000	ST	0000000000	0000000000
X-X	8	7.306-125.0	Cylinder head screw M10x70-8.8-A3E ISO4	4.000	ST	0000000000	0000000000
X-X	9	5.115-492.0	Washer	3.000	ST	0000000000	0000000000
X-X	10	6.362-398.0	O-Ring seal 27,5 X 1,5-NBR 70	3.000	ST	0000000000	0000000000
X-X	11	5.112-402.0	Bush	3.000	ST	0000000000	0000000000
X-X	12	6.365-351.0	Compact seal 16 x 24 x 4	3.000	ST	0000000000	0000000000
X-X	13	5.115-493.0	Washer	3.000	ST	0000000000	0000000000
X-X	14	6.365-322.0	Grooved ring 16X24X7	3.000	ST	0000000000	0000000000

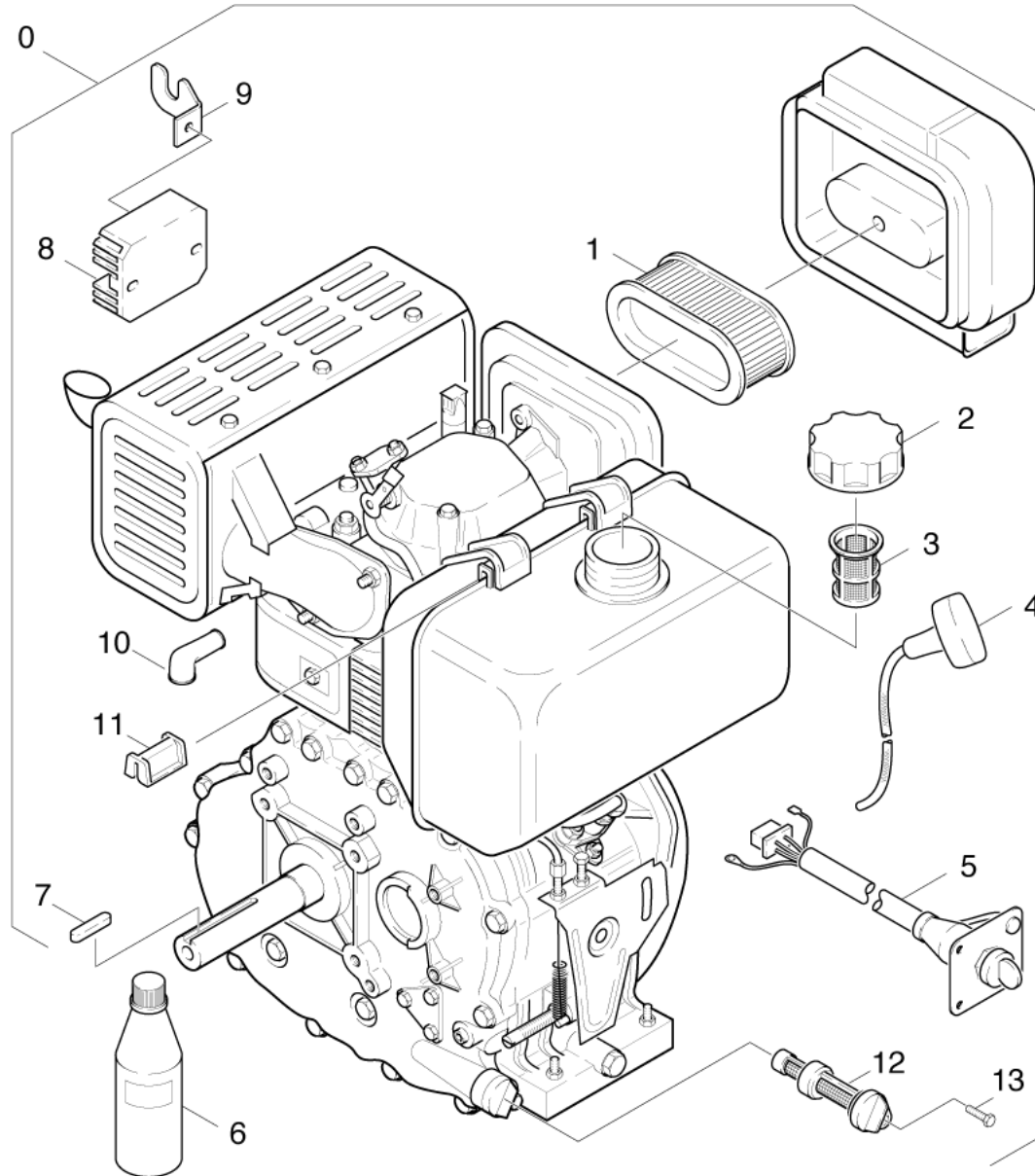


24 Speed control (0.108-151.0)

ET/VT (spare/wear parts)	Pos	Material #	Name	Qty.	Unit	from ser.nr.	up to ser.nr.
X-X	1	5.404-063.0	Hollow screw	1.000	ST	0000000000	0000000000
X-X	2	6.362-384.0	O-Ring seal 9x1,5 - NBR 70	1.000	ST	0000000000	0000000000
X-X	3	6.362-527.0	O-Ring seal 12,0 X 1,5-NBR 70	1.000	ST	0000000000	0000000000
	4	6.431-054.0	Adjusting screw	1.000	ST	0000000000	0000000000
	5	5.060-335.0	Housing	1.000	ST	0000000000	0000000000
X-X	6	6.362-611.0	O-Ring seal complete	1.000	ST	0000000000	0000000000
	7	5.553-222.0	Piston	1.000	ST	0000000000	0000000000
X-X	8	6.362-575.0	O-Ring seal 12,42 KOMPL	1.000	ST	0000000000	0000000000
X-X	9	6.431-089.0	Strand 635 mm	1.000	ST	0000000000	0000000000
	10	5.332-232.0	Helical spring	1.000	ST	0000000000	0000000000
	11	5.411-087.0	Screw plug	1.000	ST	0000000000	0000000000
X-X	12	6.414-142.0	Strainer	1.000	ST	0000000000	0000000000
X	13	5.305-283.0	Screw	1.000	ST	0000000000	0000000000
X-X	14	6.431-089.0	Strand 635 mm	1.000	ST	0000000000	0000000000
X-X	15	6.431-065.0	Wire cage 435mm	1.000	ST	0000000000	0000000000

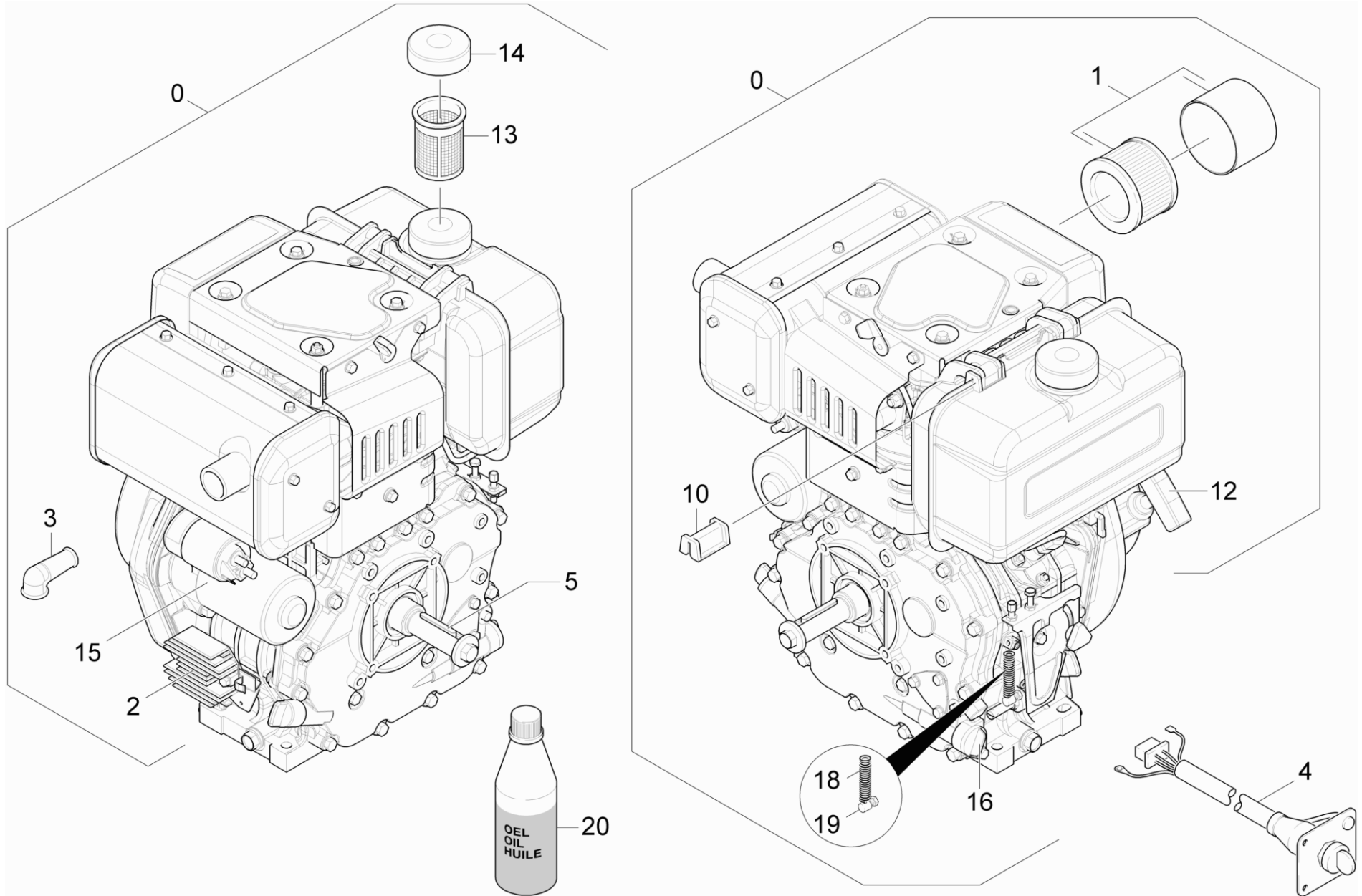
30 Motor (0.112-312.0)

Pos	Name	Qty.	Unit	from ser.nr.	up to ser.nr.	Footnote text
31	Motor	1.000	ST	0000000000	0000000000	VERSION 1
32	Motor	1.000	ST			VERSION 2
33	Transmission	1.000	ST	0000000000	0000000000	



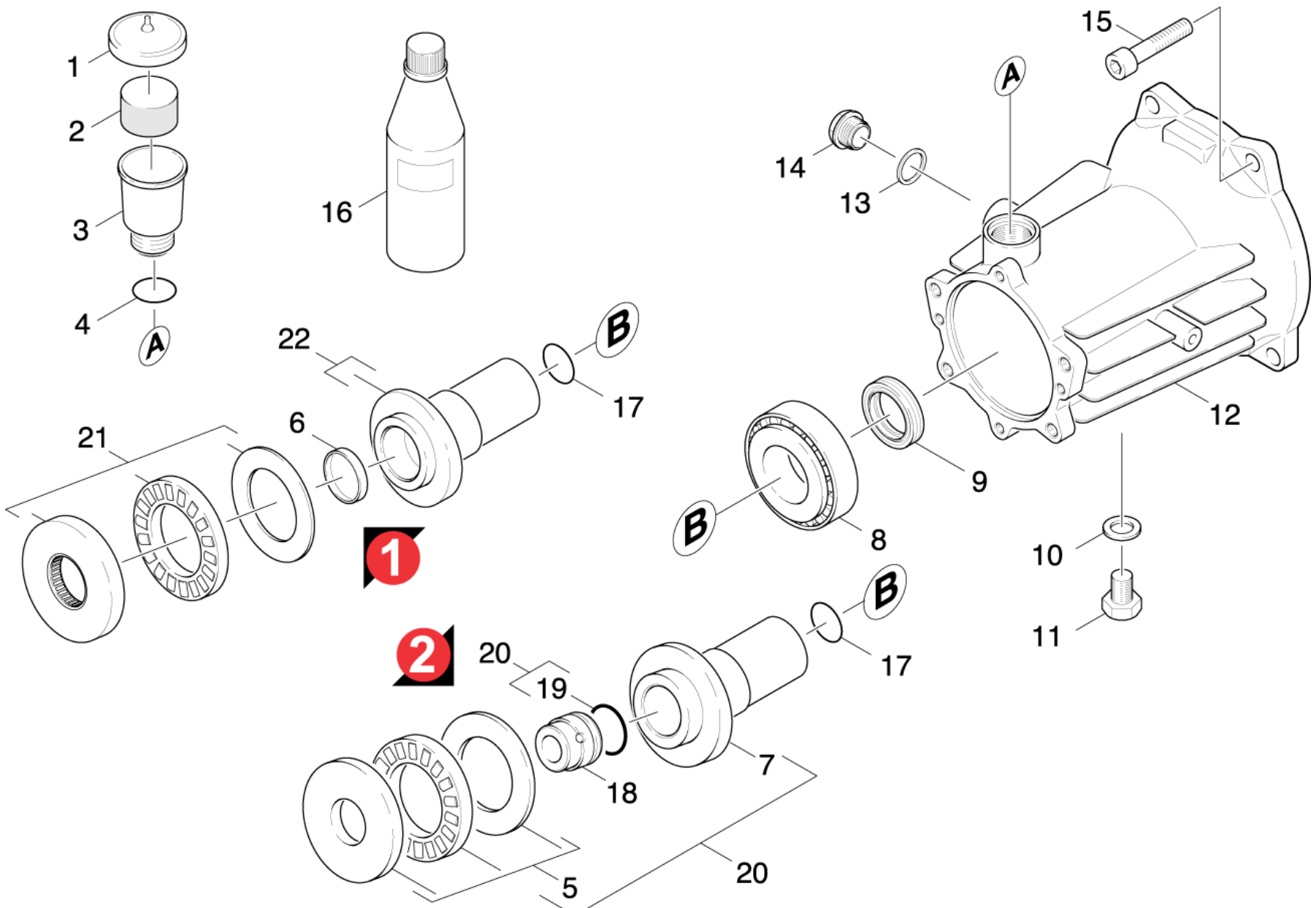
31 Motor (0.112-197.0)

ET/VT (spare/wear parts)	Pos	Material #	Name	Qty.	Unit	from ser.nr.	up to ser.nr.	Footnote text
	0	6.491-271.0	Diesel engine 10HP	1.000	ST	0000000000	0000000000	
X-X	1	6.491-263.0	Air filter	1.000	ST	0000000000	0000000000	
	2	6.491-261.0	Cap of a tank complete	1.000	ST	0000000000	0000000000	
X-X	3	6.491-262.0	Fuel filter	1.000	ST	0000000000	0000000000	
	4	6.491-265.0	Pull cord complete	1.000	ST	0000000000	0000000000	
	5	6.491-274.0	Switch start-up	1.000	ST	0000000000	0000000000	
X-X	6	6.288-050.0	Engine oil 1L	2.000	ST	0000000000	0000000000	MOTOR 1,6 L
	7	6.491-224.0	Parallel key 7X7X33	1.000	ST	0000000000	0000000000	
	8	6.491-275.0	Control device	1.000	ST	0000000000	0000000000	
	9	5.042-607.0	Holder	1.000	ST	0000000000	0000000000	
	10	5.394-923.0	Protecting cap	1.000	ST	0000000000	0000000000	
X-X	11	6.491-709.0	Holder rubber	2.000	ST	0000000000	0000000000	
X	12	6.491-471.0	Oil filter	1.000	ST	0000000000	0000000000	
X	13	7.306-118.0	Screw M 6x35 -8.8-R3R (In6Rd)	1.000	ST	0000000000	0000000000	



32 Motor (0.113-836.0)

ET/VT (spare/wear parts)	Pos	Material #	Name	Qty.	Unit
	0	6.491-970.0	Diesel engine 10HP	1.000	ST
X-X	1	6.491-958.0	Air filter insert	1.000	ST
	2	6.491-991.0	Control device	1.000	ST
	3	6.618-019.0	Protecting cap	1.000	ST
	4	6.491-997.0	Switch start-up	1.000	ST
	5	6.491-998.0	Parallel key 6.3x50	1.000	ST
X-X	10	6.491-709.0	Holder rubber	2.000	ST
	12	6.491-993.0	Starter rope complete	1.000	ST
X	13	6.491-994.0	Fuel filter	1.000	ST
	14	6.491-261.0	Cap of a tank complete	1.000	ST
	15	6.491-273.0	Starter	1.000	ST
X	16	6.491-471.0	Oil filter	1.000	ST
X	18	5.332-264.0	Helical spring	1.000	ST
	19	6.431-114.0	Clamping bolt	1.000	ST
X-X	20	6.288-050.0	Engine oil 1L	1.000	ST

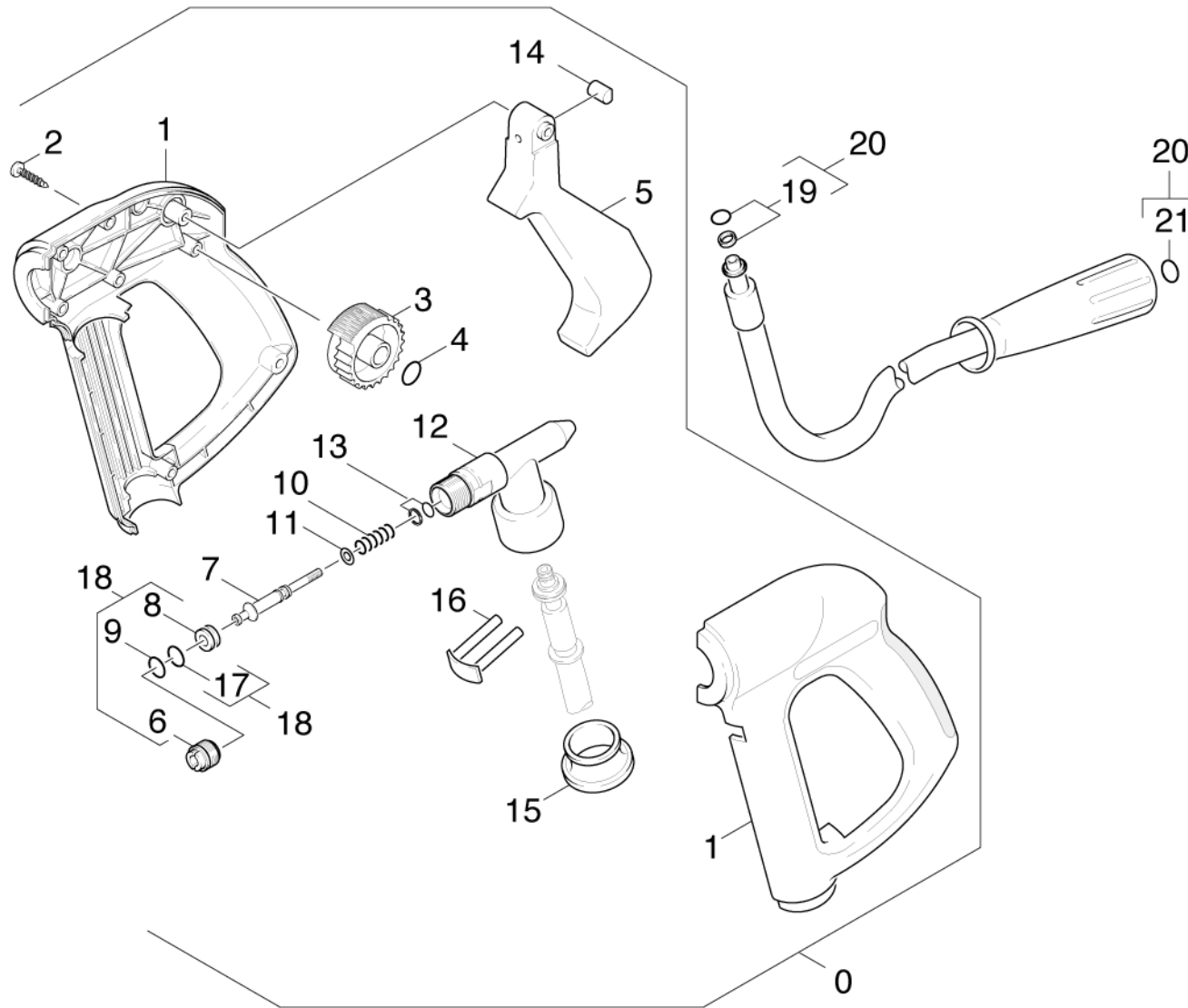


33 Transmission (0.112-303.0)

ET/VT (spare/wear parts)	Pos	Material #	Name	Qty.	Unit	from ser.nr.	up to ser.nr.	Footnote text
X-X	1	5.063-651.0	Cover	1.000	ST	0000000000	0000000000	
X-X	2	5.132-107.0	Plug	2.000	ST	0000000000	0000000000	
	3	5.070-194.0	Tank	1.000	ST	0000000000	0000000000	
X-X	4	6.362-168.0	O-Ring seal 22,3 X 2,4-NBR 70	1.000	ST	0000000000	0000000000	
	5	6.401-334.0	Axial roller bearing	1.000	ST	0000000000	0000000000	
	6	6.362-888.0	Gasket disc 32x7	1.000	ST	0000000000	0000000000	
	7	4.120-238.0	Wobble plate -nur für Ersatz-	1.000	ST	0000000000	0000000000	
X-X	8	6.401-225.0	Taper roller bearing 41	1.000	ST	0000000000	0000000000	
X-X	9	7.367-011.0	Radial shaft seal ring A40x52x7-NBR DIN	1.000	ST	0000000000	0000000000	
X-X	10	7.362-005.0	Joint ring A14x18 -Cu DIN 7603	1.000	ST	0000000000	0000000000	
	11	7.382-233.0	Screw plug M14x1,5-A-CuZn DIN 7604	1.000	ST	0000000000	0000000000	
	12	5.060-827.0	Housing	1.000	ST	0000000000	0000000000	
X-X	13	6.362-585.0	Seal	1.000	ST	0000000000	0000000000	
X-X	14	5.411-062.0	Screw plug	1.000	ST	0000000000	0000000000	
	15	6.304-035.0	Screw 3/8"-16UNC	4.000	ST	0000000000	0000000000	
X-X	16	6.288-050.0	Engine oil 1L	1.000	ST	0000000000	0000000000	MOTOR 1,1L
	17	6.362-612.0	O-Ring seal 24,77x5,33-NBR 70	1.000	ST	0000000000	0000000000	
	18	5.132-144.0	Plug	1.000	ST	0000000000	0000000000	
	19	6.362-810.0	O-Ring seal 28,0 X 2,0 NBR 70	1.000	ST	0000000000	0000000000	
	20	4.120-198.0	Wobble plate complete	1.000	ST	0000000000	0000000000	
	21	6.401-293.0	Bearing axial radial	1.000	ST	0000000000	0000000000	
	22	5.120-293.0	Wobble plate	1.000	ST	0000000000	0000000000	

40 Accessories (0.148-848.0)

Pos	Name	Qty.	Unit	from ser.nr.	up to ser.nr.	var. information
41	Hand trigger gun	1.000	ST	0000000000	0000000000	
42	Hand trigger gun	1.000	ST	0000000000	0000000000	
43	Jet pipe	1.000	ST	0000000000	0000000000	VERSION 1
44	Jet pipe	1.000	ST	0000000000	0000000000	VERSION 2
45	Triple jet nozzle	1.000	ST	0000000000	0000000000	

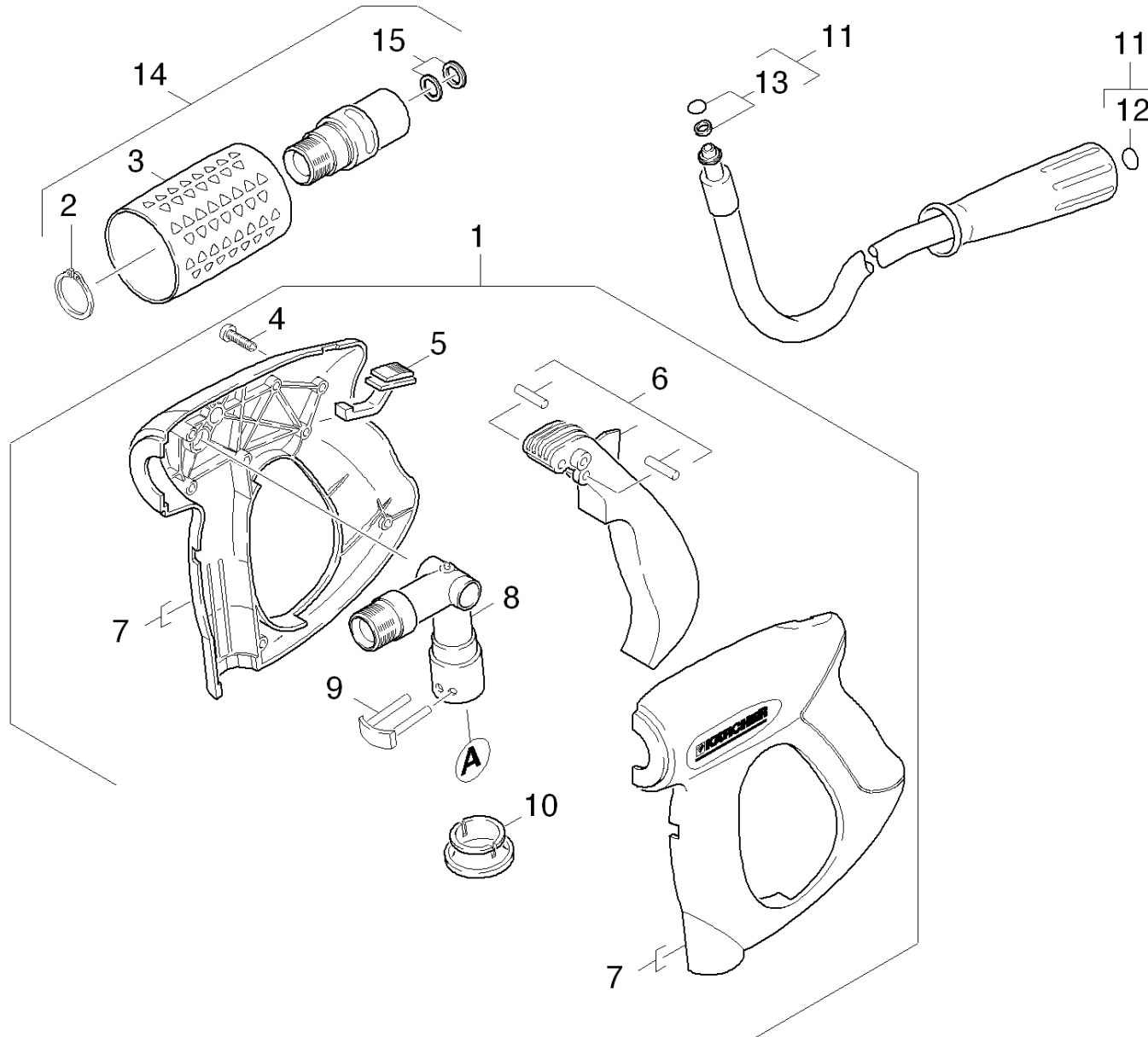


41 Hand trigger gun (0.146-436.0)

ET/VT (spare/wear parts)	Pos	Material #	Name	Qty.	Unit	from ser.nr.	up to ser.nr.	var. information
	0		Stockpiling discontinued	1.000	ST	0000000000	0000000000	
	1	5.321-494.0	Handhold few	1.000	ST	0000000000	0000000000	
	2	7.303-096.0	Screw 4x22 -ST-10.9-R2R (IN6RD)	8.000	ST	0000000000	0000000000	
	3	5.322-012.0	Hand wheel	1.000	ST	0000000000	0000000000	
	4	6.362-642.0	O-Ring d. 7,65x1,78 -NBR 80	1.000	ST	0000000000	0000000000	
	5	5.481-178.0	Lever	1.000	ST	0000000000	0000000000	
	6	5.404-079.0	Hollow screw	1.000	ST	0000000000	0000000000	
X-X	7	5.553-348.0	Piston	1.000	ST	0000000000	0000000000	
X-X	8	5.581-243.0	Valve seat	1.000	ST	0000000000	0000000000	
	9	6.362-182.0	O-Ring seal 7,65x1,78 - NBR 90	2.000	ST	0000000000	0000000000	
	10	5.332-413.0	Helical spring	1.000	ST	0000000000	0000000000	
X-X	11	6.362-477.0	O-Ring seal complete 1ST.-R.	1.000	ST	0000000000	0000000000	
	12	5.427-214.0	Manifold	1.000	ST	0000000000	0000000000	
X-X	13	6.362-964.0	O-Ring seal complete	1.000	ST	0000000000	0000000000	
	14	5.316-400.0	Bolt	1.000	ST	0000000000	0000000000	
X-X	15	5.110-596.0	Sleeve	1.000	ST	0000000000	0000000000	
X-X	16	4.037-013.0	Hook	1.000	ST	0000000000	0000000000	
X-X	17	6.362-503.0	O-Ring seal 8,0 X 1,0	1.000	ST	0000000000	0000000000	VERSION 2
	18	2.883-888.0	Spare parts set	1.000	ST	0000000000	0000000000	VERSION 2
X-X	19	6.363-115.0	O-Ring seal complete 1ST.-R.	1.000	ST	0000000000	0000000000	
X-X	20	6.391-420.0	High pressure hose neutrally DN 6	1.000	ST	0000000000	0000000000	
X-X	21	2.880-296.0	Spare part set O-Ring seal 5x	1.000	ST	0000000000	0000000000	

18 Spare parts set (2.883-888.0)

ET/VT (spare/wear parts)	Pos	Material #	Name	Qty.	Unit	from ser.nr.	up to ser.nr.
	10	5.404-079.0	Hollow screw	1.000	ST	0000000000	0000000000
X-X	20	5.581-243.0	Valve seat	1.000	ST	0000000000	0000000000
	30	6.362-182.0	O-Ring seal 7,65x1,78 - NBR 90	1.000	ST	0000000000	0000000000
X-X	40	6.362-503.0	O-Ring seal 8,0 X 1,0	1.000	ST	0000000000	0000000000



42 Hand trigger gun (0.148-843.0)

ET/VT (spare/wear parts)	Pos	Material #	Name	Qty.	Unit	from ser.nr.	up to ser.nr.
X-X	1	4.775-463.0	HAND TRIGGER GUN EASY PRESS	1.000	ST	0000000000	0000000000
	2	7.343-069.0	Locking ring 25x1,2-1.4122 DIN 471	1.000	ST	0000000000	0000000000
	3	5.321-668.0	Handle	1.000	ST	0000000000	0000000000
	4	7.303-096.0	Screw 4x22 -ST-10.9-R2R (IN6RD)	7.000	ST	0000000000	0000000000
	5	5.481-331.0	Slider	1.000	ST	0000000000	0000000000
	6	4.481-209.0	Lever complete	1.000	ST	0000000000	0000000000
	7	5.321-669.0	Handhold few	1.000	ST	0000000000	0000000000
X-X	8	4.427-215.0	Manifold complete only for replacement	1.000	ST	0000000000	0000000000
X-X	9	4.037-013.0	Hook	1.000	ST	0000000000	0000000000
X-X	10	5.110-596.0	Sleeve	1.000	ST	0000000000	0000000000
X-X	11	6.390-185.0	Hose assembly DN8 max.31,5MPa 15m	1.000	ST	0000000000	0000000000
X-X	12	2.880-296.0	Spare part set O-Ring seal 5x	1.000	ST	0000000000	0000000000
X-X	13	6.363-115.0	O-Ring seal complete 1ST.-R.	1.000	ST	0000000000	0000000000
X-X	14	4.775-470.0	Rotary controller 416L	1.000	ST	0000000000	0000000000
X-X	15	4.363-695.0	Grooved ring only for replacement	1.000	ST		

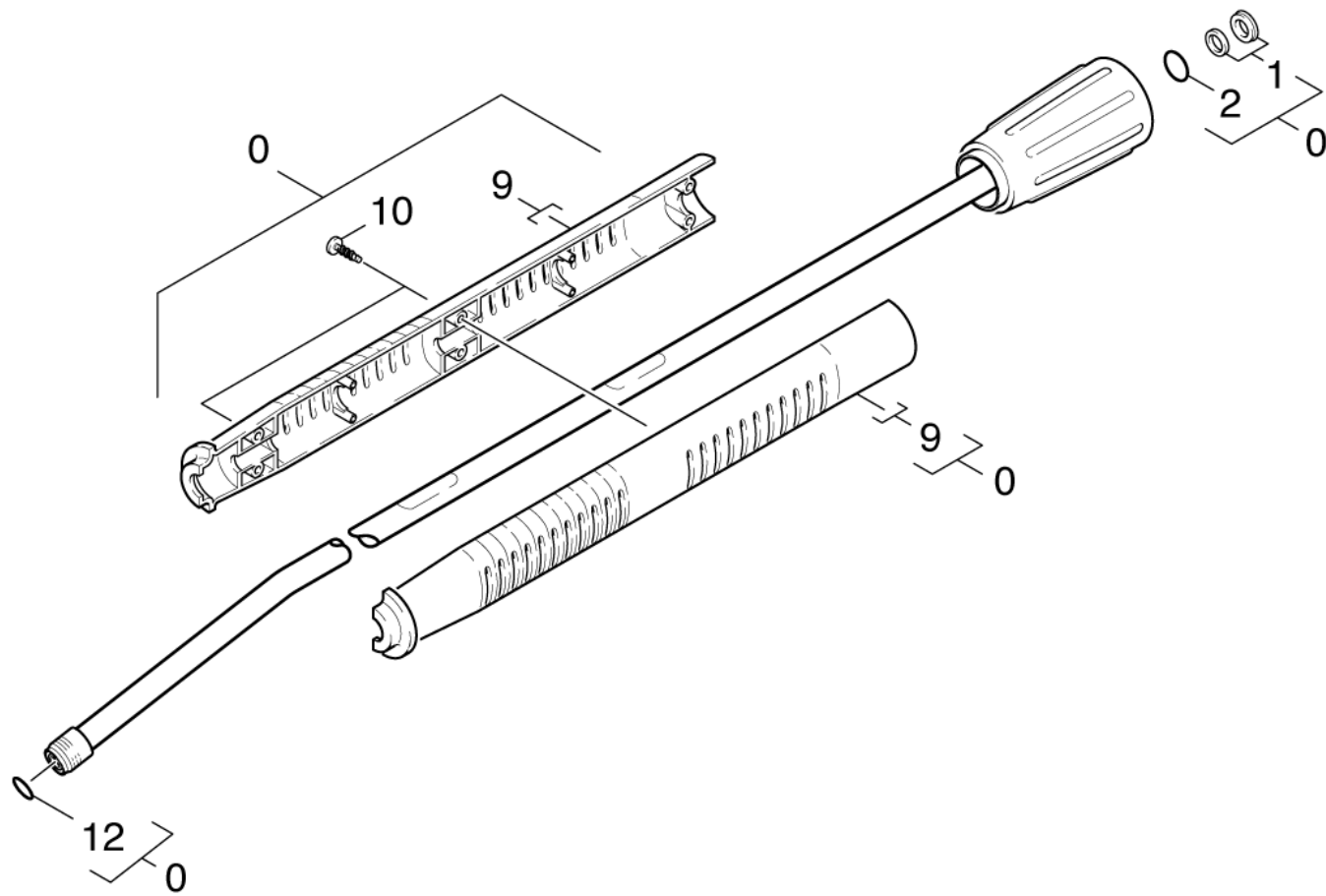
6 Lever complete (4.481-209.0)

Pos	Material #	Name	Qty.	Unit	from ser.nr.	up to ser.nr.
2	5.314-119.0	Pin	2.000	ST	0000000000	0000000000

Position text: 3E52859E52515810E1000000C34F56CF44812090

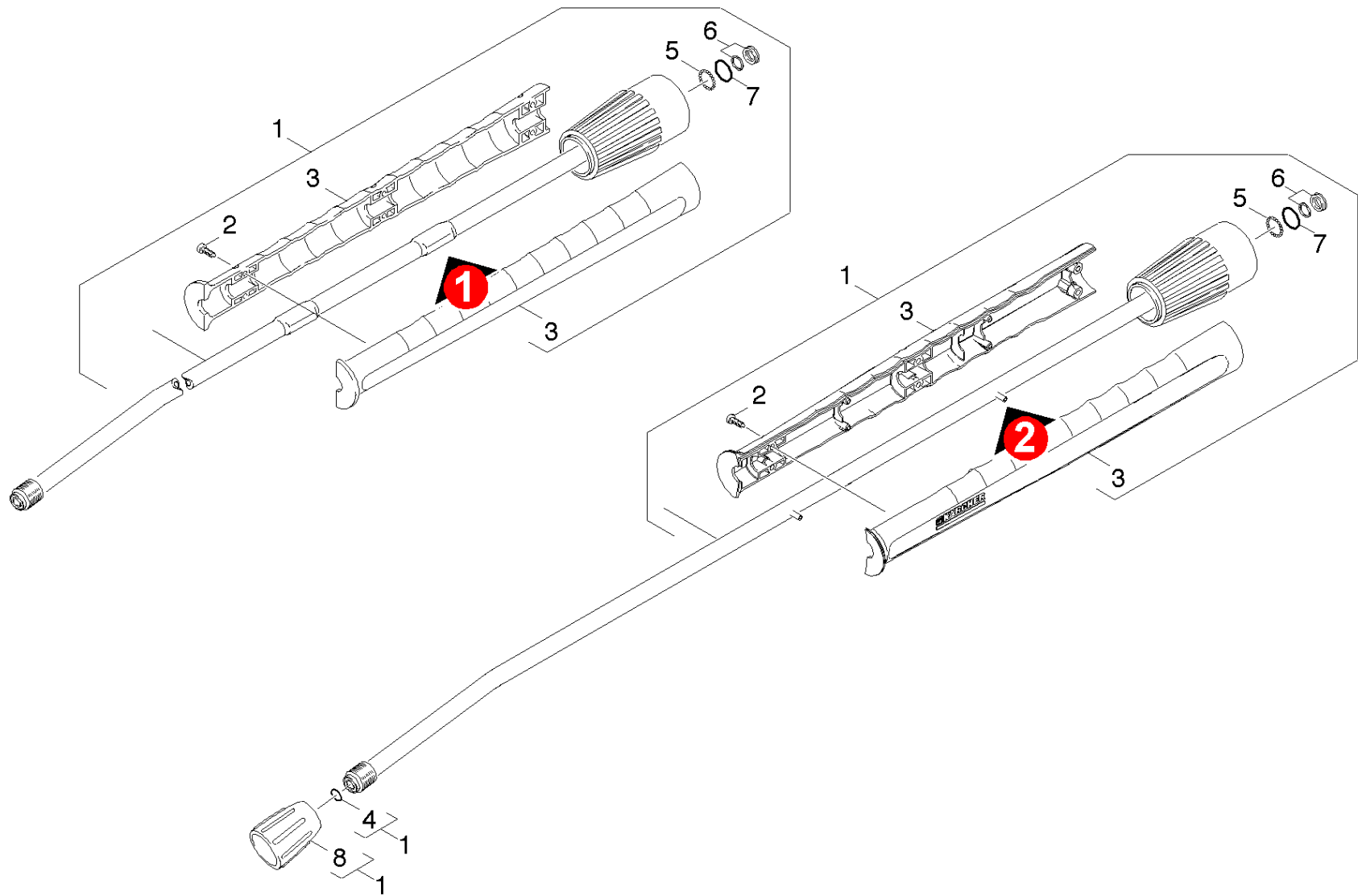
8 Manifold complete only for replacement (4.427-215.0)

Pos	Material #	Name	Qty.	Unit	from ser.nr.	up to ser.nr.
15	6.363-331.0	O-Ring seal 9,0 x 1,5	2.000	ST	0000000000	0000000000
Position text: 3E52946B52515810E1000000C34F56CF44272150						
18	6.368-012.0	Protecting cap 22X1,5	1.000	ST	0000000000	0000000000
Position text: 3E52950052515810E1000000C34F56CF44272150						



43 Jet pipe (0.147-369.0)

ET/VT (spare/wear parts)	Pos	Material #	Name	Qty.	Unit	from ser.nr.	up to ser.nr.
X-X	0	4.760-660.0	Jet pipe packaged only for replacement	1.000	ST	0000000000	0000000000
X-X	1	4.363-692.0	Grooved ring kpl. -nur fuer Ersatz-	1.000	ST	0000000000	0000000000
X-X	2	6.362-524.0	O-Ring seal 17,0 X 1,5	1.000	ST	0000000000	0000000000
	9	5.321-691.0	Handhold few jet pipe	1.000	ST	0000000000	0000000000
	10	6.303-025.0	Oval head screw 4,2x16-St-vz	6.000	ST	0000000000	0000000000
X-X	12	2.880-154.0	O-Ring kit	1.000	ST	0000000000	0000000000



44 Jet pipe (0.148-571.0)

ET/VT (spare/wear parts)	Pos	Material #	Name	Qty.	Unit	from ser.nr.	up to ser.nr.	var. information
X-X	1	4.760-660.0	Jet pipe packaged only for replacement	1.000	ST	0000000000	0000000000	
	2	7.303-129.0	Screw 4x16 -10.9-R2R (K-In6Rd)	6.000	ST	0000000000	0000000000	
	3	5.321-855.0	Handhold few jet pipe with welding bolt	1.000	ST			VERSION 2
	3	5.321-691.0	Handhold few jet pipe	1.000	ST	0000000000	0000000000	VERSION 1
X-X	4	2.880-296.0	Spare part set O-Ring seal 5x	1.000	ST	0000000000	0000000000	
X-X	5	7.401-915.0	Sphere 2,5 G20 -1.4034 DIN 5401	20.000	ST	0000000000	0000000000	
X-X	6	4.363-692.0	Grooved ring kpl. -nur fuer Ersatz-	1.000	ST	0000000000	0000000000	
X-X	7	6.362-524.0	O-Ring seal 17,0 X 1,5	1.000	ST	0000000000	0000000000	
X-X	8	5.401-129.0	Screw connector part	1.000	ST	0000000000	0000000000	

45 Triple jet nozzle (0.146-444.0)

ET/VT (spare/wear parts)	Pos	Material #	Name	Qty.	Unit	from ser.nr.	up to ser.nr.
	1	7.343-151.0	Locking ring 28x1,2-FST-RF DIN 472	1.000	ST	0000000000	0000000000
	2	2.884-014.0	Spare part set neutrally	1.000	ST	0000000000	0000000000
	3	4.401-049.0	Screw connector part	1.000	ST	0000000000	0000000000
X-X	4	6.362-580.0	O-Ring seal 17,0 X 2,0-NBR 70	1.000	ST	0000000000	0000000000
X-X	5	4.767-002.0	Triple jet nozzle 045	1.000	ST	0000000000	0000000000
X	6	7.401-929.0	Sphere 6,35 G20 -1.4034 DIN 5401	2.000	ST	0000000000	0000000000
	7	6.415-639.0	Solid spray nozzle -00 045	1.000	ST	0000000000	0000000000
	8	6.362-661.0	O-Ring seal 5,0 X 1,0-NBR 80	3.000	ST	0000000000	0000000000
	9	6.415-535.0	Flat jet nozzle -4025	1.000	ST	0000000000	0000000000
	11	6.415-640.0	Flat jet nozzle -25 045	1.000	ST	0000000000	0000000000
	12	5.394-259.0	Protection part	1.000	ST	0000000000	0000000000