

Spare parts list
(5.972-503.0) Spare parts list HD 1050 DE

Table of contents

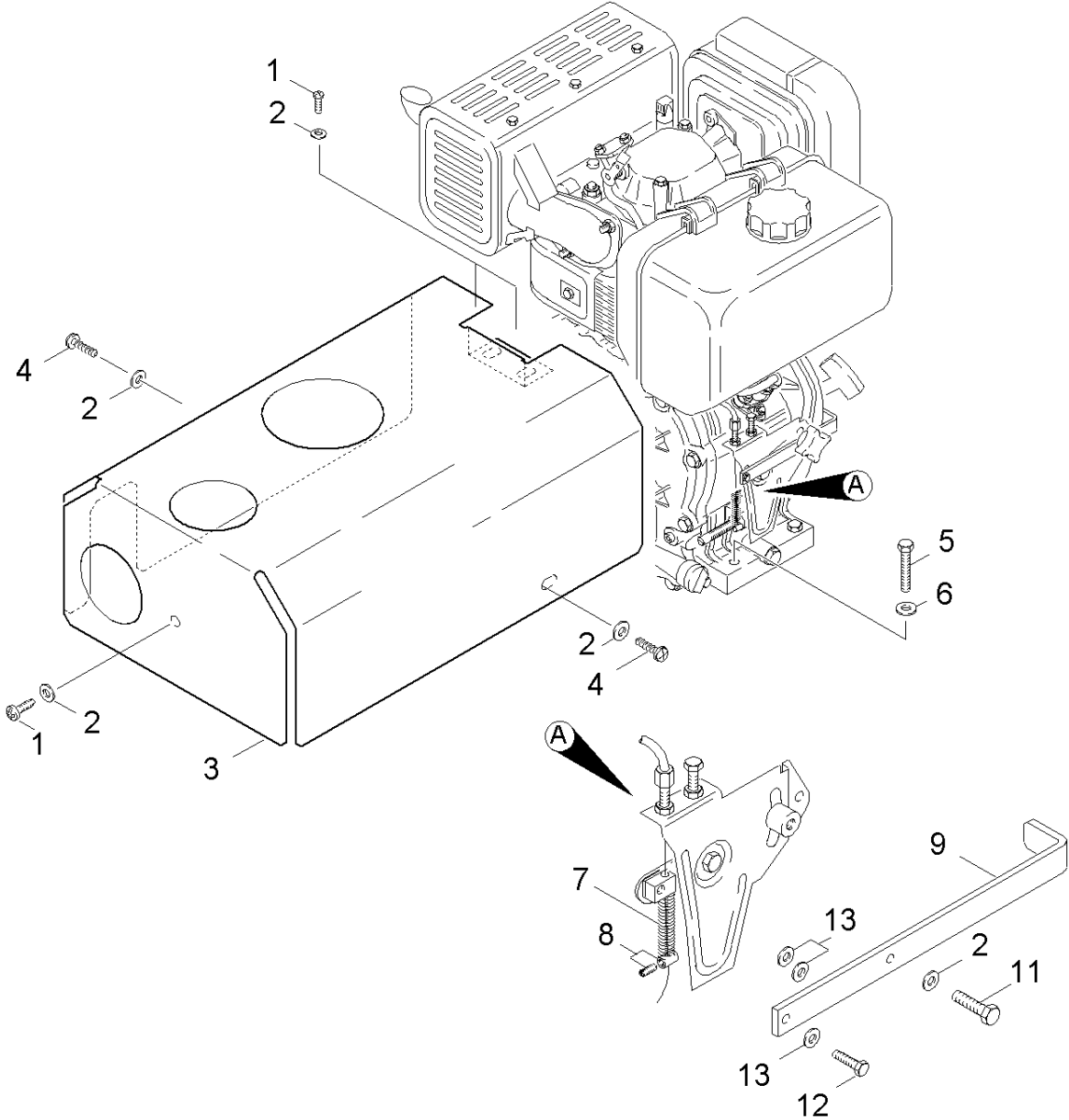
Spare parts list HD 1050 DE (5.972-503.0)	6
10 Frame (0.116-553.0).....	7
11 Cover (0.116-551.0).....	8
12 Frame (0.116-554.0).....	10
20 Pump set (0.116-555.0).....	13
21 Cylinder head (0.116-542.0).....	14
22 Excess-current (0.116-556.0).....	16
23 Piston (0.107-590.0).....	18
24 Speed control (0.108-151.0).....	20
30 Motor (0.116-557.0).....	22
31 Motor (0.113-836.0).....	23
32 Transmission (0.116-545.0).....	25
40 Accessories (0.116-546.0).....	27
41 Hand trigger gun (0.114-105.0).....	28
42 Rotary controller (0.114-776.0).....	30
43 High pressure hose (0.114-460.0).....	32
44 Jet pipe (0.114-109.0).....	34
45 Nozzle (0.148-454.0).....	36

Spare parts list HD 1050 DE (5.972-503.0)

Pos	Name	Qty.	Unit
10	Frame	1.000	ST
20	Pump set	1.000	ST
30	Motor	1.000	ST
40	Accessories	1.000	ST

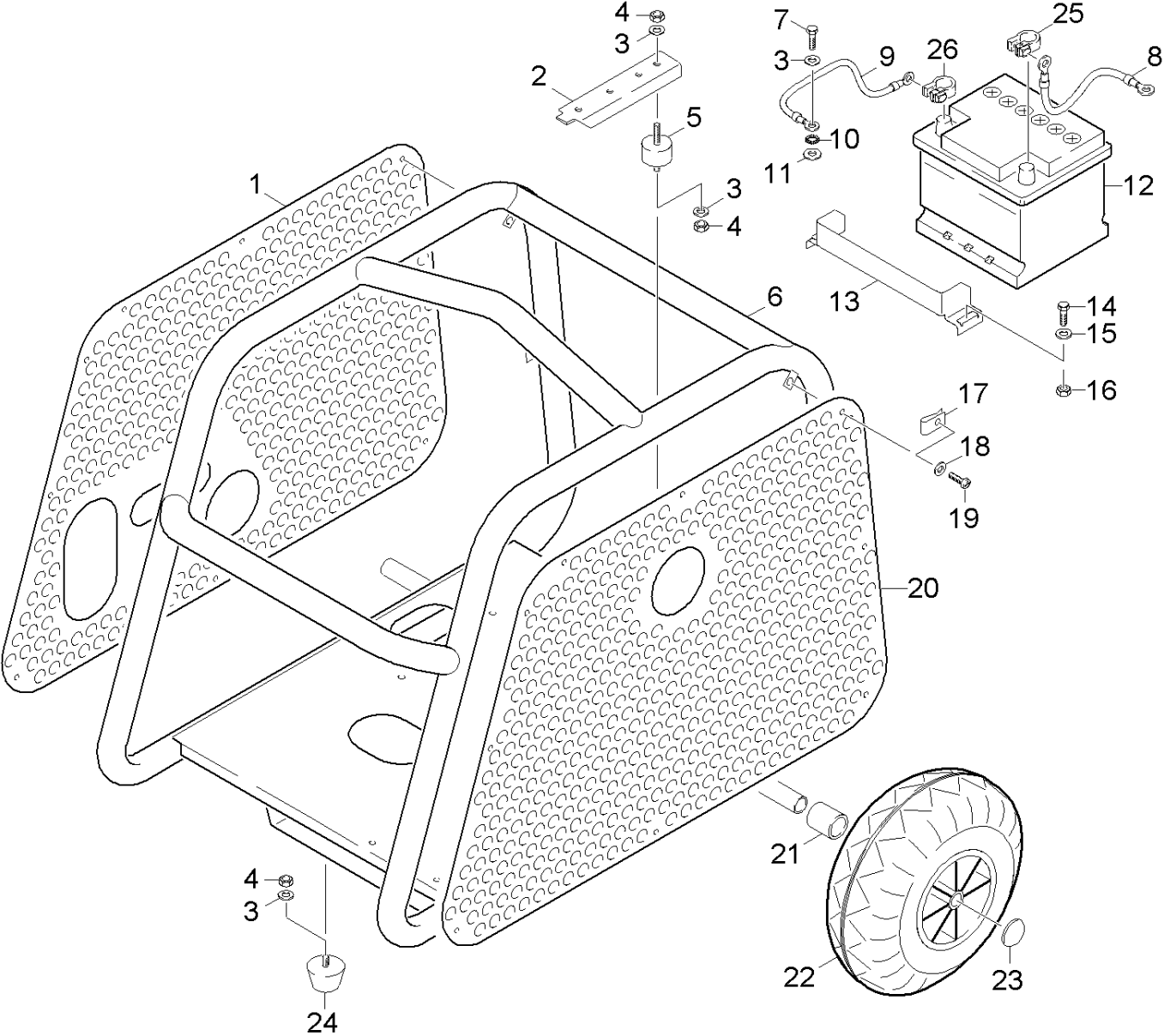
10 Frame (0.116-553.0)

Pos	Name	Qty.	Unit
11	Cover	1.000	ST
12	Frame	1.000	ST



11 Cover (0.116-551.0)

ET/VT (spare/wear parts)	Pos	Material #	Name	Qty.	Unit	from ser.nr.	up to ser.nr.
X	1	6.303-193.0	Cylinder head screw M 6X 12-8.8-R2R	3.000	ST	0000000000	0000000000
X-X	2	7.312-003.0	Washer 6 -200HV-A3E ISO 7090	6.000	ST	0000000000	0000000000
	3	5.068-242.0	Cover 1050 DE	1.000	ST	0000000000	0000000000
X-X	4	7.303-046.0	Screw M6x12 -St-R3R (In6Rd)	2.000	ST	0000000000	0000000000
	5	7.304-404.0	Hexagonal head screw M8x40-8.8-A2E ISO	3.000	ST	0000000000	0000000000
X-X	6	7.312-004.0	Washer 8 -200HV-A3E ISO 7090	3.000	ST	0000000000	0000000000
X	7	5.332-264.0	Helical spring	1.000	ST	0000000000	0000000000
	8	6.431-114.0	Clamping bolt	1.000	ST	0000000000	0000000000
	9	5.017-042.0	Angle	1.000	ST	0000000000	0000000000
X-X	11	7.306-105.0	Screw M6x30 -8.8-R3R (In6Rd)	1.000	ST	0000000000	0000000000
	12	7.306-057.0	Screw M4x10 -8.8-R2R (In6Rd)	1.000	ST	0000000000	0000000000
	13	5.115-962.0	Washer	3.000	ST	0000000000	0000000000



12 Frame (0.116-554.0)

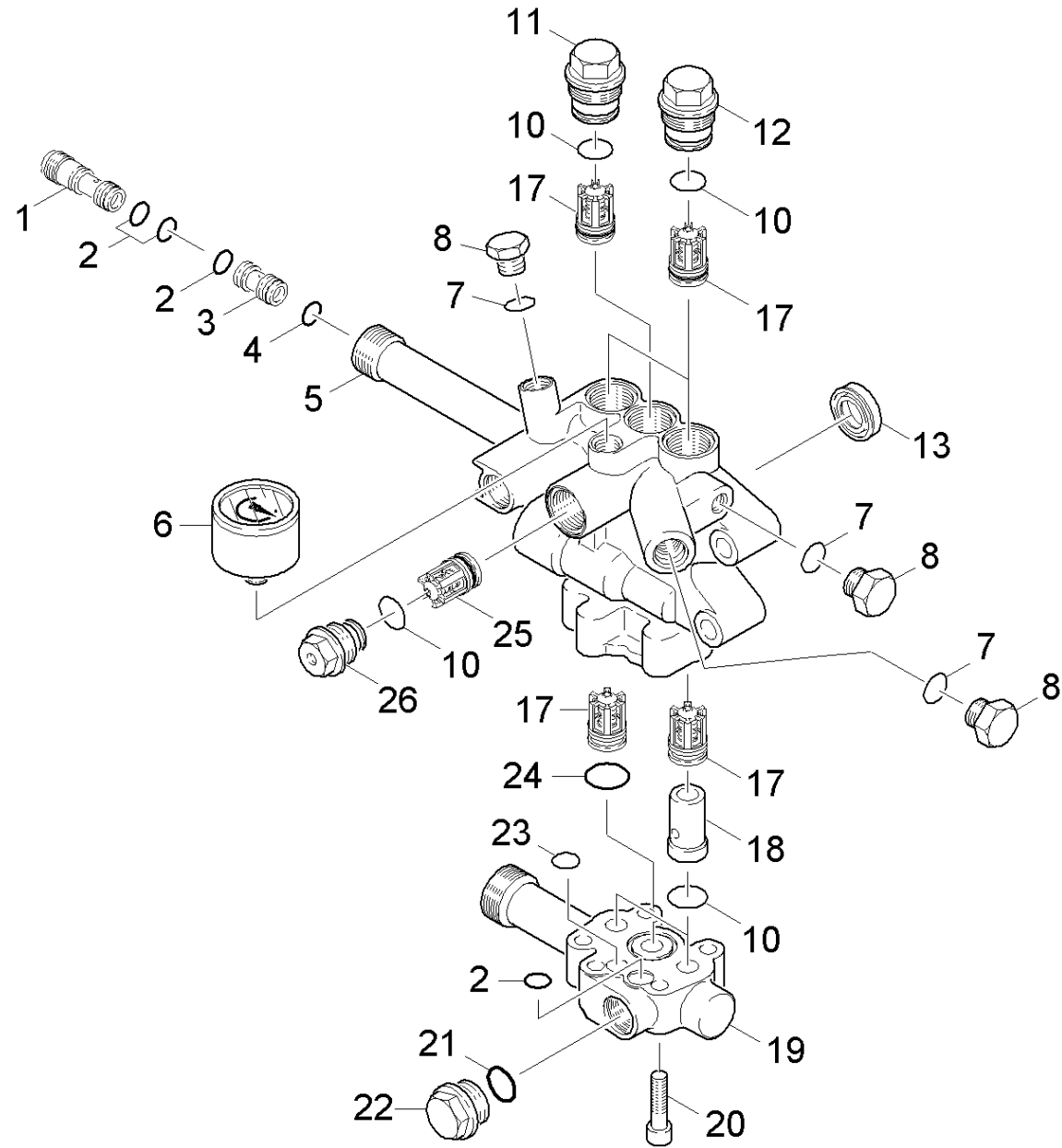
ET/VT (spare/wear parts)	Pos	Material #	Name	Qty.	Unit	from ser.nr.	up to ser.nr.
	1	6.397-555.0	Side plate left HD 1050 DE	1.000	ST	0000000000	0000000000
	2	4.022-045.0	U-Section complete	2.000	ST	0000000000	0000000000
X-X	3	7.312-004.0	Washer 8 -200HV-A3E ISO 7090	9.000	ST	0000000000	0000000000
X-X	4	7.311-427.0	Hexagon nut M8 -04-A2E ISO 10511	10.000	ST	0000000000	0000000000
X-X	5	6.339-014.0	Rubber buffer	4.000	ST	0000000000	0000000000
	6	4.397-001.0	Frame	1.000	ST	0000000000	0000000000
	7	7.304-404.0	Hexagonal head screw M8x40-8.8-A2E ISO	1.000	ST	0000000000	0000000000
	8	4.820-732.0	Cable red 16,0mm ² x1050mm	1.000	ST	0000000000	0000000000
	9	4.820-946.0	Cable black 16,0mm ² x300mm	1.000	ST	0000000000	0000000000
X	10	7.312-166.0	Toothed lock washer A8,4-FSt-A3E DIN 67	1.000	ST	0000000000	0000000000
	11	7.312-277.0	Washer 8-200HV-A2E ISO7093-1	1.000	ST	0000000000	0000000000
	12	6.654-026.0	Battery 36AH 12V	1.000	ST	0000000000	0000000000
	13	5.050-704.0	Bracket battery	2.000	ST	0000000000	0000000000
	14	7.303-049.0	Screw M6x25-ST-A3R (IN6RD)	4.000	ST	0000000000	0000000000
X	15	7.312-276.0	Washer 6 -200HV-A2E ISO7093-1	2.000	ST	0000000000	0000000000
X-X	16	7.311-422.0	Hexagon nut M 6-1.4305 ISO 10511	4.000	ST	0000000000	0000000000
	17	6.310-082.0	Putting nut M6	20.000	ST	0000000000	0000000000
X-X	18	7.312-003.0	Washer 6 -200HV-A3E ISO 7090	20.000	ST	0000000000	0000000000
	19	7.306-090.0	Screw M6x16 -8.8-R3R (In6Rd)	20.000	ST	0000000000	0000000000
	20	6.397-556.0	Side plate right	1.000	ST	0000000000	0000000000
X-X	21	5.110-378.0	Sleeve	2.000	ST	0000000000	0000000000
X-X	22	6.435-310.0	Wheel	2.000	ST	0000000000	0000000000
X-X	23	6.343-137.0	Quick-fastener	2.000	ST	0000000000	0000000000
	24	6.339-100.0	Rubber buffer	2.000	ST	0000000000	0000000000
	25	6.654-075.0	Battery clamp "+"	1.000	ST	0000000000	0000000000

12 Frame (0.116-554.0)

ET/VT (spare/wear parts)	Pos	Material #	Name	Qty.	Unit	from ser.nr.	up to ser.nr.
	26	6.654-074.0	Battery clamp	1.000	ST	0000000000	0000000000

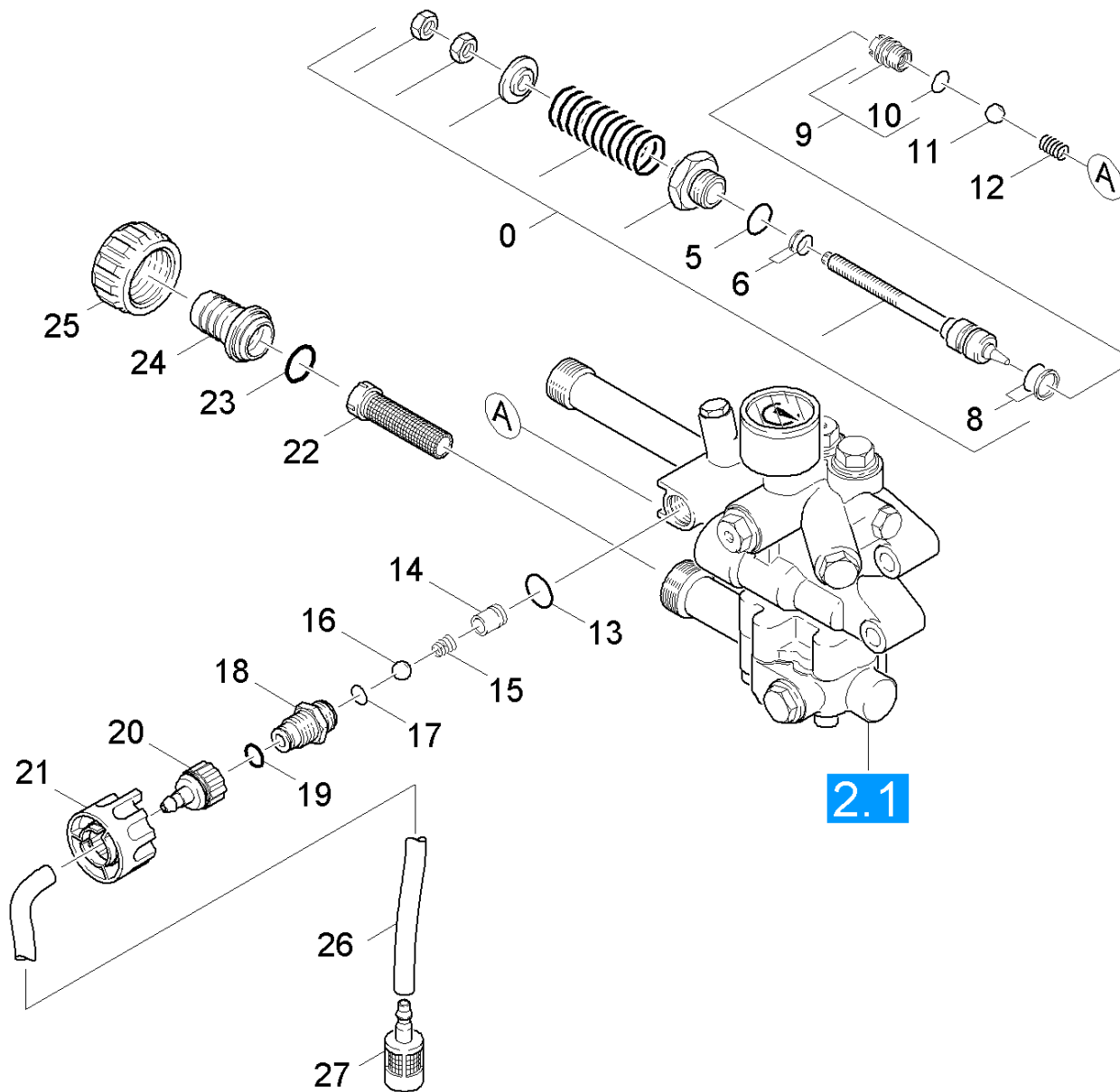
20 Pump set (0.116-555.0)

Pos	Name	Qty.	Unit
21	Cylinder head	1.000	ST
22	Excess-current	1.000	ST
23	Piston	1.000	ST
24	Speed control	1.000	ST



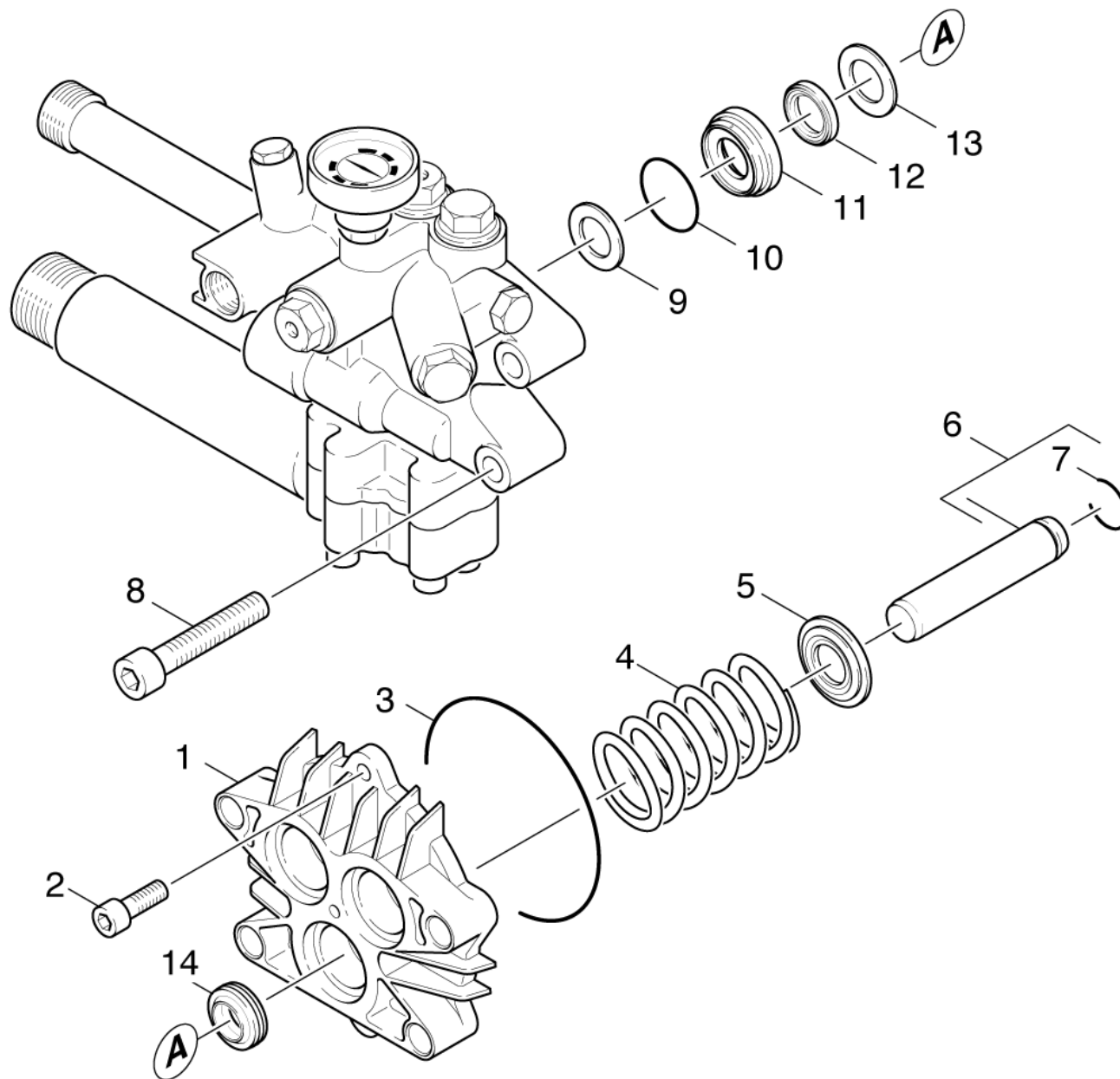
21 Cylinder head (0.116-542.0)

ET/VT (spare/wear parts)	Pos	Material #	Name	Qty.	Unit	from ser.nr.	up to ser.nr.
X-X	1	5.769-141.0	Nozzle insert	1.000	ST	0000000000	0000000000
X-X	2	6.362-384.0	O-Ring seal 9x1,5 - NBR 70	4.000	ST	0000000000	0000000000
X-X	3	5.769-143.0	Nozzle insert	1.000	ST	0000000000	0000000000
	4	6.362-388.0	O-Ring seal 8,0x1,5 -EPDM 70	1.000	ST	0000000000	0000000000
	5	4.551-057.0	Cylinder head only for replacement	1.000	ST	0000000000	0000000000
	6	6.421-358.0	Pressure gauge 0-30 MPa	1.000	ST	0000000000	0000000000
	7	6.362-642.0	O-Ring d. 7,65x1,78 -NBR 80	3.000	ST	0000000000	0000000000
X	8	5.411-070.0	Screw plug	2.000	ST	0000000000	0000000000
X-X	10	6.362-481.0	O-Ring seal 14,0 x 2,0 NBR 80	6.000	ST	0000000000	0000000000
X	11	5.583-160.0	Valve screw	1.000	ST	0000000000	0000000000
X-X	12	5.583-146.0	Valve screw	2.000	ST	0000000000	0000000000
X-X	13	6.365-408.0	Grooved ring 16x24x5.3	3.000	ST	0000000000	0000000000
X-X	17	2.884-512.0	Valve (3 Stueck)	1.000	ST	0000000000	0000000000
X-X	18	5.110-608.0	Sleeve	2.000	ST	0000000000	0000000000
	19	5.060-888.0	Valve housing swivel arm Hobbock	1.000	ST	0000000000	0000000000
X-X	20	7.306-044.0	Cylinder head screw M8x35 -8.8-A2E ISO4	5.000	ST	0000000000	0000000000
	21	6.362-427.0	O-Ring seal 15,0x2,0	1.000	ST	0000000000	0000000000
X	22	7.382-235.0	Screw plug M18x1,5-A-CuZn DIN 7604	1.000	ST	0000000000	0000000000
X-X	23	6.363-045.0	O-Ring seal 8X1,25 NBR	1.000	ST	0000000000	0000000000
X-X	24	6.362-547.0	O-Ring seal 20,0x1,5-NBR 70	1.000	ST	0000000000	0000000000
X-X	25	4.580-323.0	Valve complete	1.000	ST	0000000000	0000000000
	26	5.583-155.0	Valve screw	1.000	ST	0000000000	0000000000



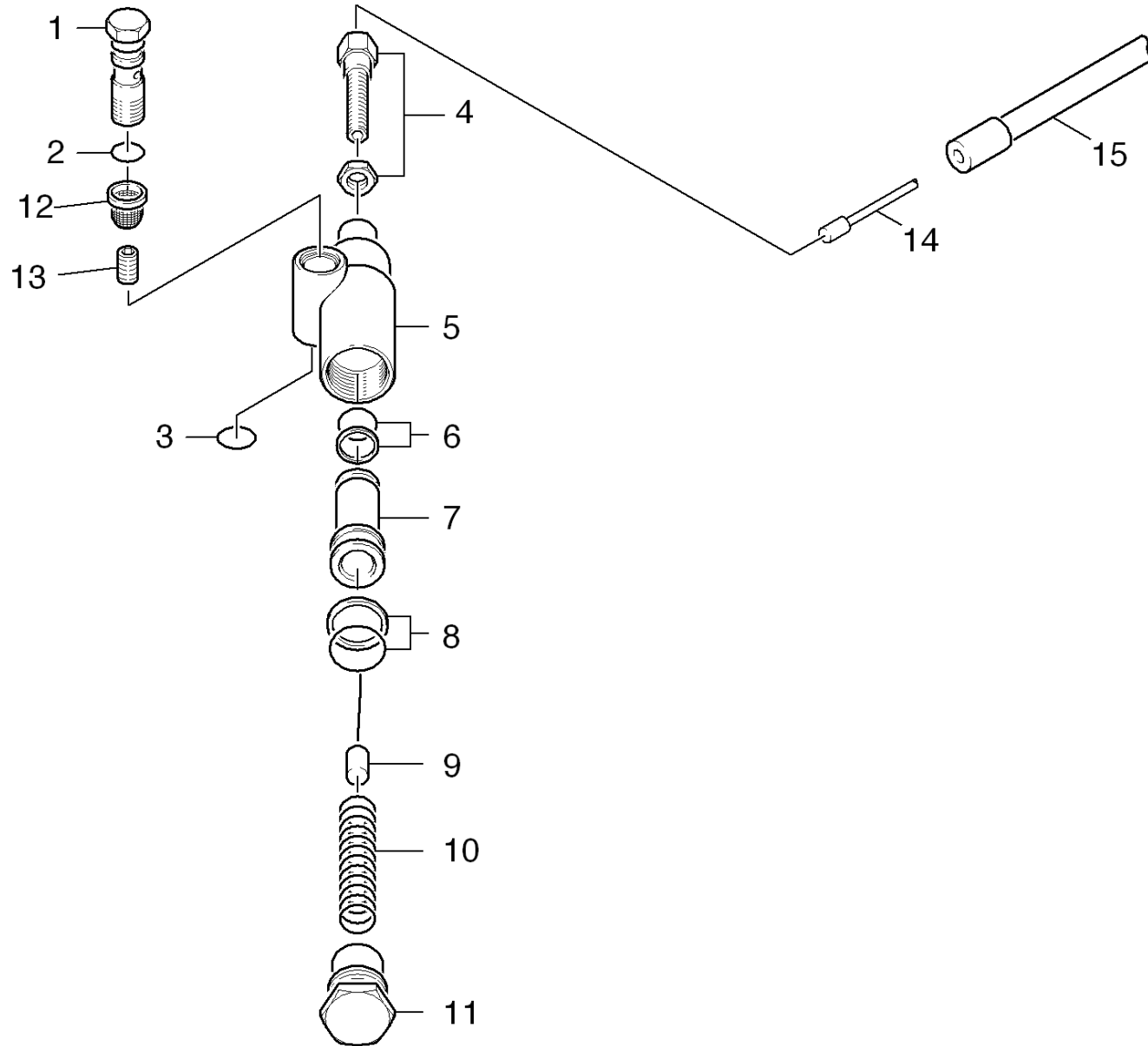
22 Excess-current (0.116-556.0)

ET/VT (spare/wear parts)	Pos	Material #	Name	Qty.	Unit	from ser.nr.	up to ser.nr.
X-X	0	4.591-035.0	Overflow valve	1.000	ST	0000000000	0000000000
X-X	5	6.362-445.0	O-Ring seal 16,0 X 2,4-NBR 80	1.000	ST	0000000000	0000000000
X-X	6	6.362-365.0	O-Ring seal complete 1ST.-R.- 7,65X 1,7	1.000	ST	0000000000	0000000000
X-X	8	6.362-575.0	O-Ring seal 12,42 KOMPL	1.000	ST	0000000000	0000000000
X-X	9	4.581-019.0	Valve seat	1.000	ST	0000000000	0000000000
X-X	10	6.362-858.0	O-Ring seal 11,0 X 1,5	1.000	ST	0000000000	0000000000
X-X	11	7.401-907.0	Sphere 3/8 G200-1.4301 DIN 5401	1.000	ST	0000000000	0000000000
X-X	12	5.332-999.0	Helical spring	1.000	ST	0000000000	0000000000
X-X	13	6.362-533.0	O-Ring seal 14,0 X 1,5-NBR 70	1.000	ST	0000000000	0000000000
	14	5.028-692.0	Tube	1.000	ST	0000000000	0000000000
X-X	15	5.332-124.0	Helical spring	1.000	ST	0000000000	0000000000
	16	7.401-908.0	Sphere 7 G300 -1.4301 DIN 5401	1.000	ST	0000000000	0000000000
X-X	17	6.362-383.0	O-Ring seal 6,0 X 2,0	1.000	ST	0000000000	0000000000
	18	5.402-523.0	Screw union	1.000	ST	0000000000	0000000000
X-X	19	6.362-151.0	O-Ring d. 10 x 2 NBR 70	1.000	ST	0000000000	0000000000
X-X	20	5.443-281.0	Hose stem	1.000	ST	0000000000	0000000000
X	21	5.322-156.0	Handhold chemistry	1.000	ST	0000000000	0000000000
X-X	22	6.414-282.0	Strainer	1.000	ST	0000000000	0000000000
X-X	23	6.362-078.0	O-Ring seal 13,3x2,4	1.000	ST	0000000000	0000000000
X-X	24	5.443-291.0	Hose stem	1.000	ST	0000000000	0000000000
	25	5.311-071.0	Nut	1.000	ST	0000000000	0000000000
	26	6.388-216.0	Hose DN 5	1.000	M	0000000000	0000000000
	27	5.731-652.0	Filter with weight	1.000	ST	0000000000	0000000000



23 Piston (0.107-590.0)

ET/VT (spare/wear parts)	Pos	Material #	Name	Qty.	Unit	from ser.nr.	up to ser.nr.
	1	5.060-676.0	Housing	1.000	ST	0000000000	0000000000
X-X	2	7.306-023.0	Cylinder head screw M6x25 -8.8-A2E ISO4	2.000	ST	0000000000	0000000000
X-X	3	6.362-963.0	O-Ring seal 88,57X 2,62	1.000	ST	0000000000	0000000000
X-X	4	5.332-403.0	Helical spring	3.000	ST	0000000000	0000000000
X-X	5	5.115-689.0	Washer	3.000	ST	0000000000	0000000000
X-X	6	4.553-172.0	Piston complete	3.000	ST	0000000000	0000000000
	7	7.343-478.0	Snap ring A16 -FST DIN 7993	3.000	ST	0000000000	0000000000
X-X	8	7.306-125.0	Cylinder head screw M10x70-8.8-A3E ISO4	4.000	ST	0000000000	0000000000
X-X	9	5.115-492.0	Washer	3.000	ST	0000000000	0000000000
X-X	10	6.362-398.0	O-Ring seal 27,5 X 1,5-NBR 70	3.000	ST	0000000000	0000000000
X-X	11	5.112-402.0	Bush	3.000	ST	0000000000	0000000000
X-X	12	6.365-351.0	Compact seal 16 x 24 x 4	3.000	ST	0000000000	0000000000
X-X	13	5.115-493.0	Washer	3.000	ST	0000000000	0000000000
X-X	14	6.365-322.0	Grooved ring 16X24X7	3.000	ST	0000000000	0000000000

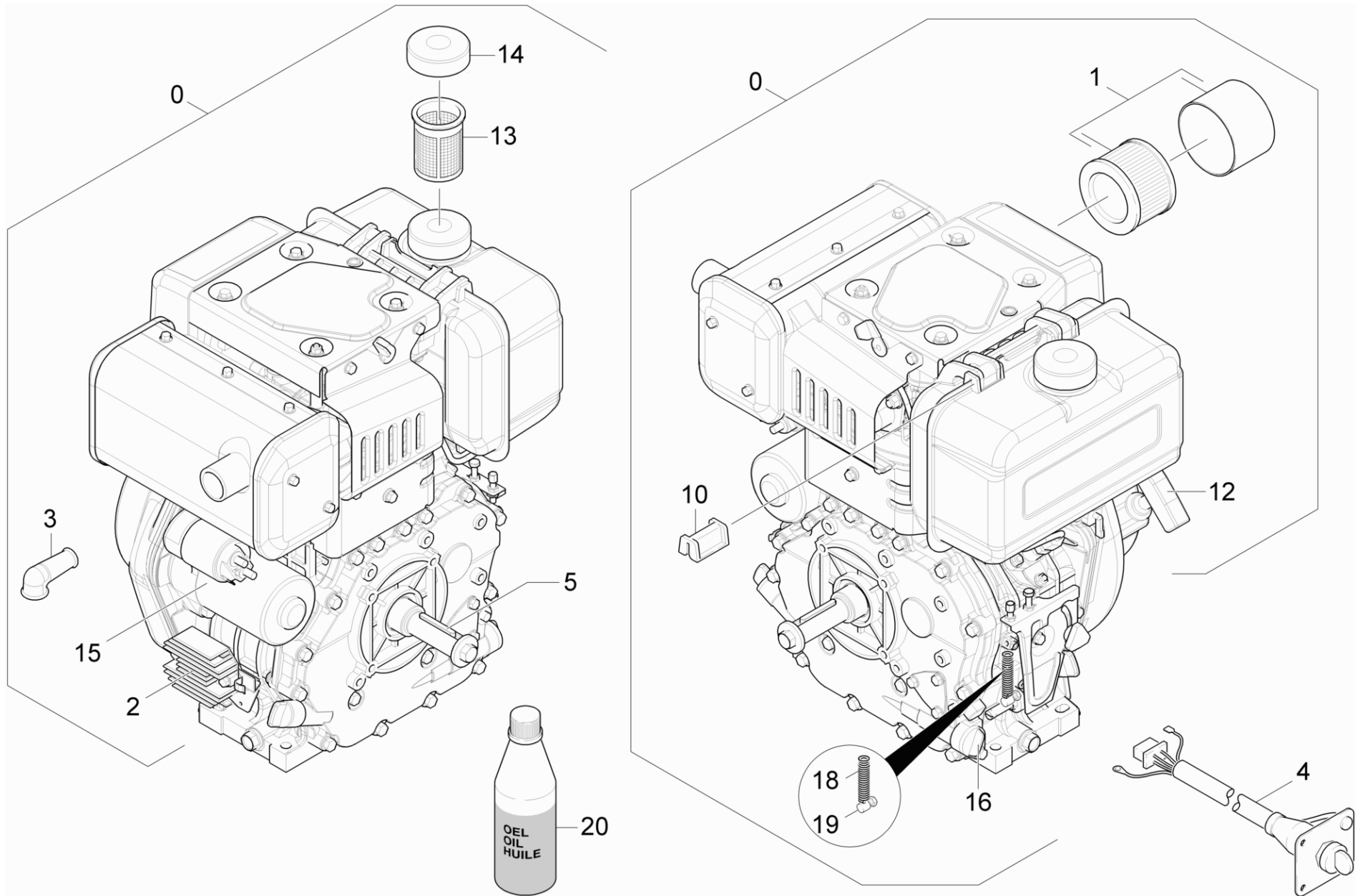


24 Speed control (0.108-151.0)

ET/VT (spare/wear parts)	Pos	Material #	Name	Qty.	Unit	from ser.nr.	up to ser.nr.
X-X	1	5.404-063.0	Hollow screw	1.000	ST	0000000000	0000000000
X-X	2	6.362-384.0	O-Ring seal 9x1,5 - NBR 70	1.000	ST	0000000000	0000000000
X-X	3	6.362-527.0	O-Ring seal 12,0 X 1,5-NBR 70	1.000	ST	0000000000	0000000000
	4	6.431-054.0	Adjusting screw	1.000	ST	0000000000	0000000000
	5	5.060-335.0	Housing	1.000	ST	0000000000	0000000000
X-X	6	6.362-611.0	O-Ring seal complete	1.000	ST	0000000000	0000000000
	7	5.553-222.0	Piston	1.000	ST	0000000000	0000000000
X-X	8	6.362-575.0	O-Ring seal 12,42 KOMPL	1.000	ST	0000000000	0000000000
X-X	9	6.431-089.0	Strand 635 mm	1.000	ST	0000000000	0000000000
	10	5.332-232.0	Helical spring	1.000	ST	0000000000	0000000000
	11	5.411-087.0	Screw plug	1.000	ST	0000000000	0000000000
X-X	12	6.414-142.0	Strainer	1.000	ST	0000000000	0000000000
X-X	13	5.305-283.0	Screw	1.000	ST	0000000000	0000000000
X-X	14	6.431-089.0	Strand 635 mm	1.000	ST	0000000000	0000000000
X-X	15	6.431-065.0	Wire cage 435mm	1.000	ST	0000000000	0000000000

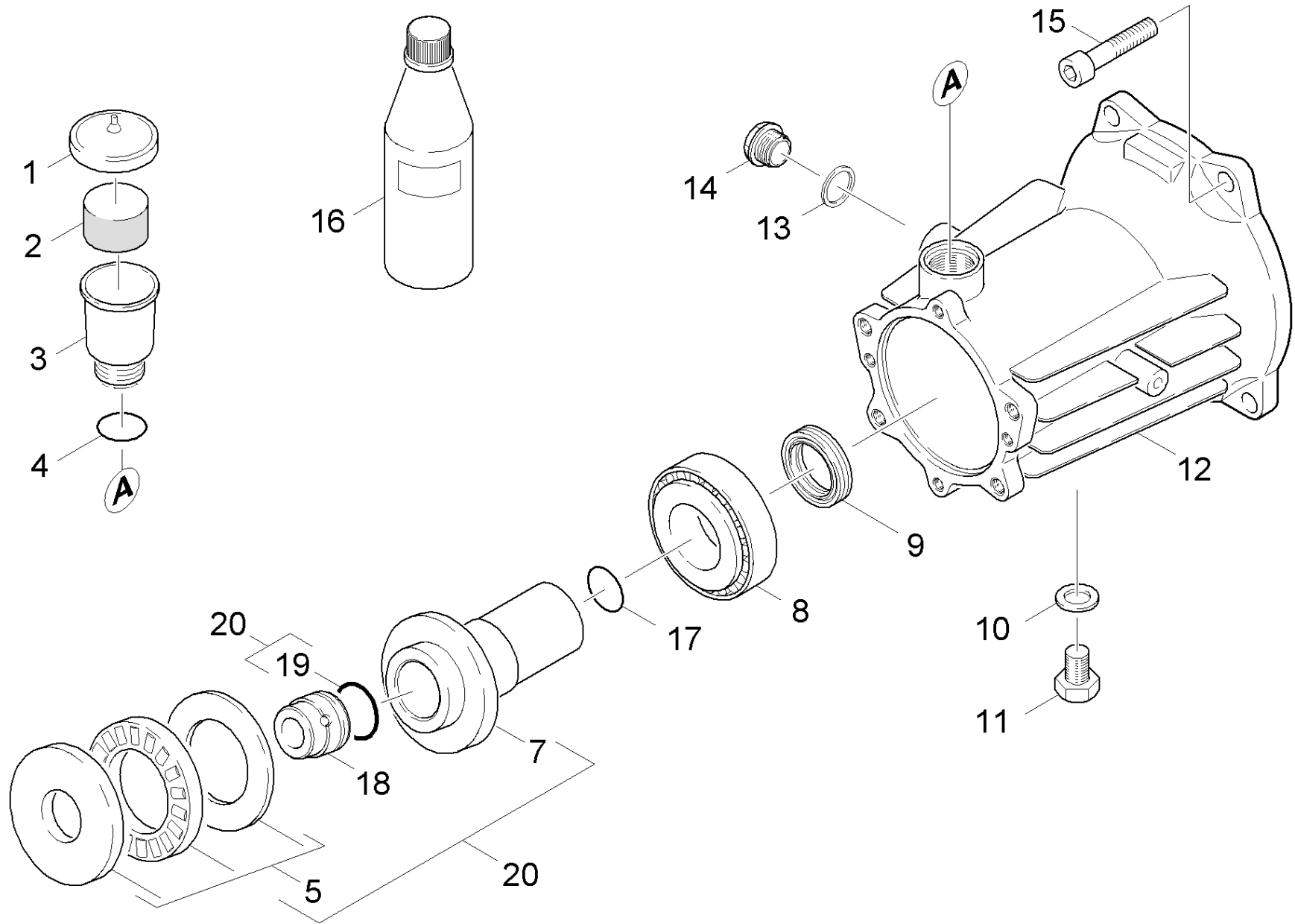
30 Motor (0.116-557.0)

Pos	Name	Qty.	Unit
31	Motor	1.000	ST
32	Transmission	1.000	ST



31 Motor (0.113-836.0)

ET/VT (spare/wear parts)	Pos	Material #	Name	Qty.	Unit
	0	6.491-970.0	Diesel engine 10HP	1.000	ST
X-X	1	6.491-958.0	Air filter insert	1.000	ST
	2	6.491-991.0	Control device	1.000	ST
	3	6.618-019.0	Protecting cap	1.000	ST
	4	6.491-997.0	Switch start-up	1.000	ST
	5	6.491-998.0	Parallel key 6.3x50	1.000	ST
X-X	10	6.491-709.0	Holder rubber	2.000	ST
	12	6.491-993.0	Starter rope complete	1.000	ST
X	13	6.491-994.0	Fuel filter	1.000	ST
	14	6.491-261.0	Cap of a tank complete	1.000	ST
	15	6.491-273.0	Starter	1.000	ST
X-X	16	6.491-471.0	Oil filter	1.000	ST
X	18	5.332-264.0	Helical spring	1.000	ST
	19	6.431-114.0	Clamping bolt	1.000	ST
X-X	20	6.288-050.0	Engine oil 1L	1.000	ST

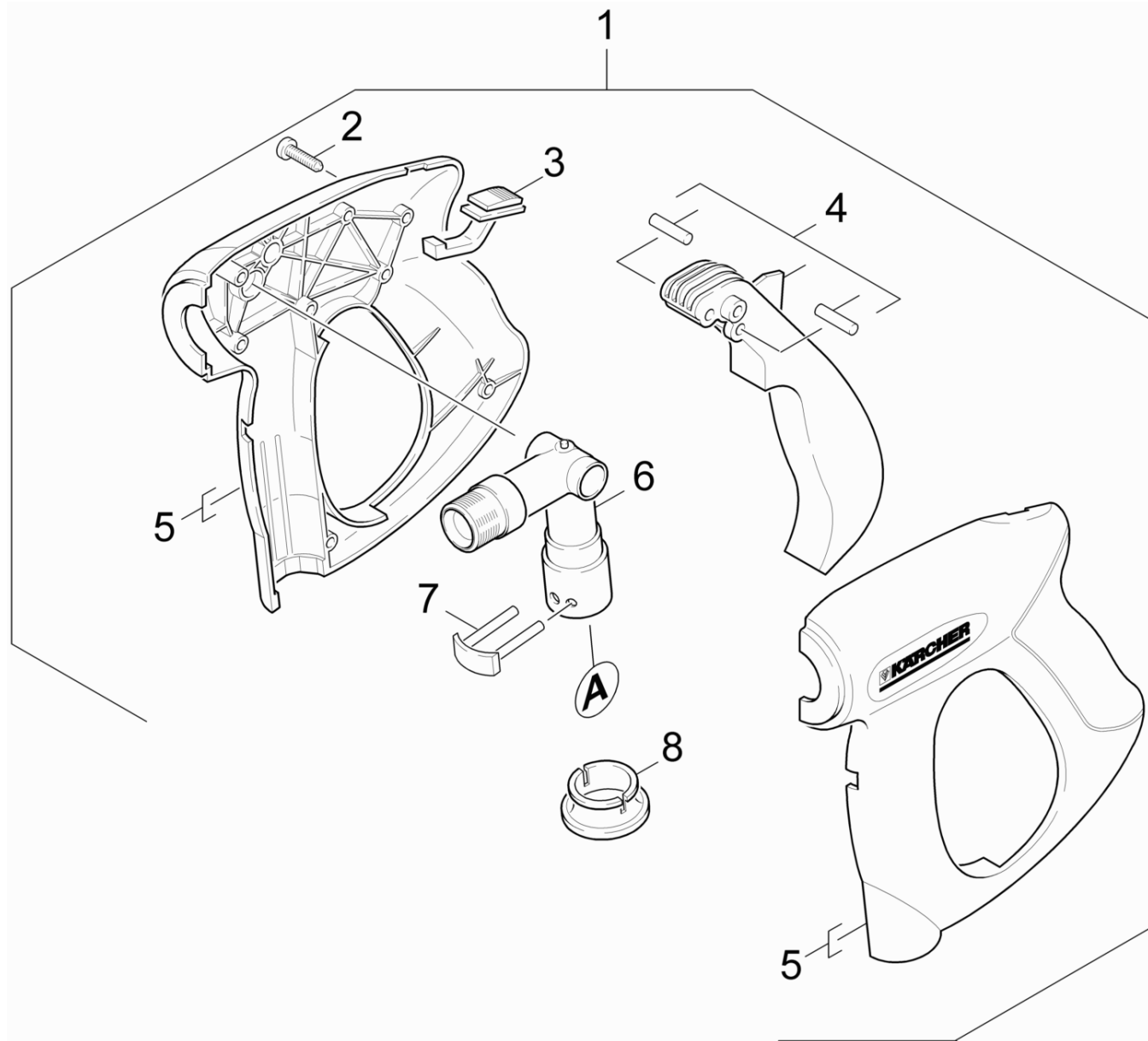


32 Transmission (0.116-545.0)

ET/VT (spare/wear parts)	Pos	Material #	Name	Qty.	Unit	from ser.nr.	up to ser.nr.	Footnote text
X-X	1	5.064-454.0	Cover qusty grey	1.000	ST	0000000000	0000000000	
X-X	2	5.132-107.0	Plug	2.000	ST	0000000000	0000000000	
	3	5.070-194.0	Tank	1.000	ST	0000000000	0000000000	
X-X	4	6.362-168.0	O-Ring seal 22,3 X 2,4-NBR 70	1.000	ST	0000000000	0000000000	
	5	6.401-334.0	Axial roller bearing	1.000	ST	0000000000	0000000000	
	7	4.120-238.0	Wobble plate -nur für Ersatz-	1.000	ST	0000000000	0000000000	
X-X	8	6.401-225.0	Taper roller bearing 41	1.000	ST	0000000000	0000000000	
X-X	9	7.367-011.0	Radial shaft seal ring A40x52x7-NBR DIN	1.000	ST	0000000000	0000000000	
X-X	10	7.362-005.0	Joint ring A14x18 -Cu DIN 7603	1.000	ST	0000000000	0000000000	
	11	7.382-233.0	Screw plug M14x1,5-A-CuZn DIN 7604	1.000	ST	0000000000	0000000000	
	12	5.060-827.0	Housing	1.000	ST	0000000000	0000000000	
X-X	13	6.362-585.0	Seal	1.000	ST	0000000000	0000000000	
X-X	14	5.411-062.0	Screw plug	1.000	ST	0000000000	0000000000	
	15	6.304-035.0	Screw 3/8"-16UNC	4.000	ST	0000000000	0000000000	
X-X	16	6.288-050.0	Engine oil 1L	1.000	ST	0000000000	0000000000	MOTOR 1,1L
	17	6.362-612.0	O-Ring seal 24,77x5,33-NBR 70	1.000	ST	0000000000	0000000000	
	18	5.132-144.0	Plug	1.000	ST	0000000000	0000000000	
	19	6.362-810.0	O-Ring seal 28,0 X 2,0 NBR 70	1.000	ST	0000000000	0000000000	
	20	4.120-198.0	Wobble plate complete	1.000	ST	0000000000	0000000000	

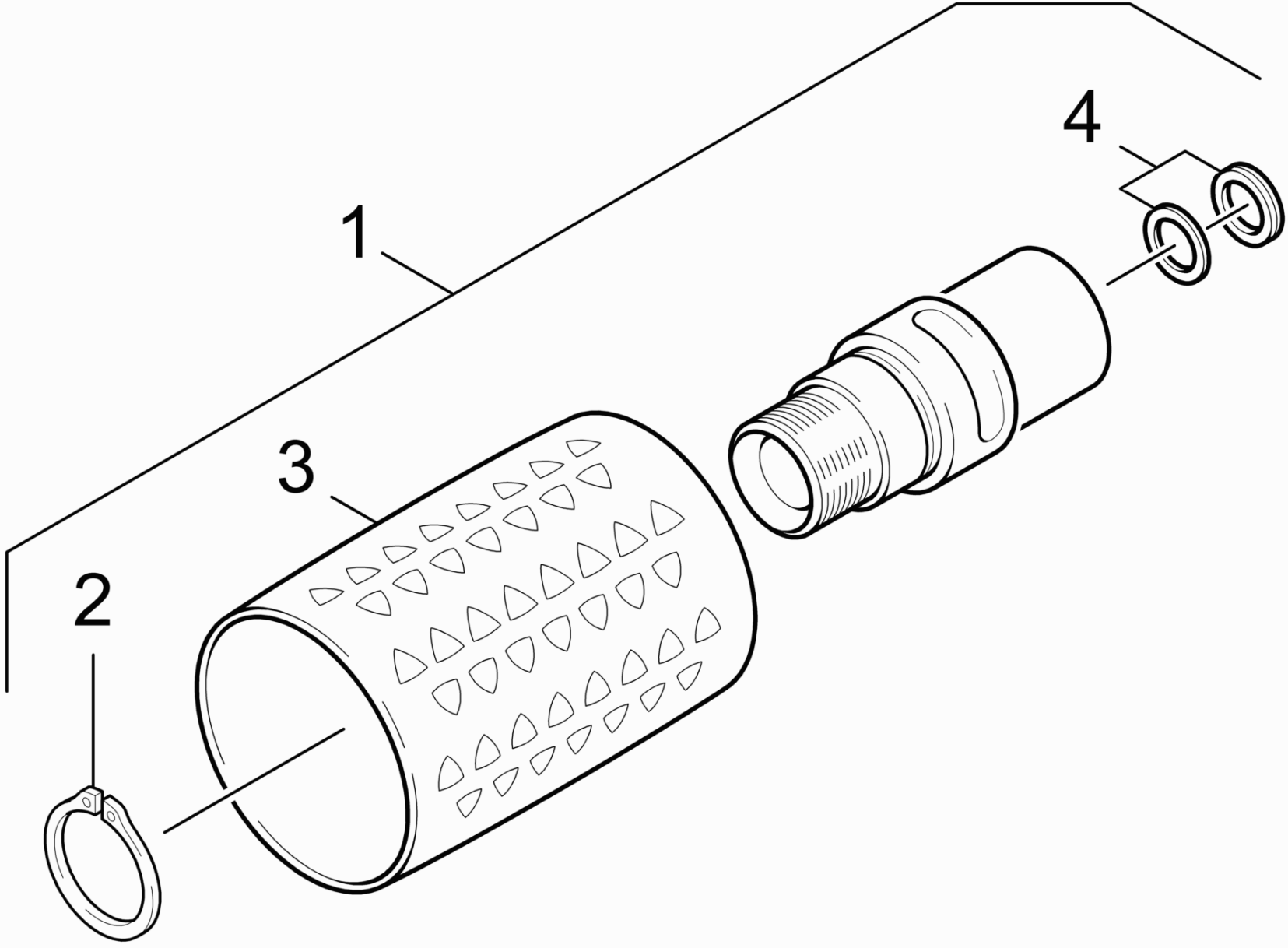
40 Accessories (0.116-546.0)

Pos	Name	Qty.	Unit
41	Hand trigger gun	1.000	ST
42	Rotary controller	1.000	ST
43	High pressure hose	1.000	ST
44	Jet pipe	1.000	ST
45	Nozzle	1.000	ST



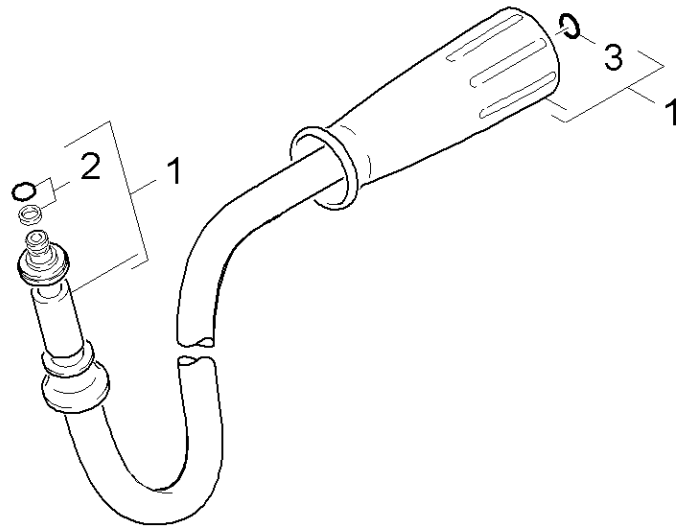
41 Hand trigger gun (0.114-105.0)

ET/VT (spare/wear parts)	Pos	Material #	Name	Qty.	Unit
X-X	1	4.775-463.0	HAND TRIGGER GUN EASY PRESS	1.000	ST
	2	7.303-096.0	Screw 4x22 -ST-10.9-R2R (IN6RD)	7.000	ST
	3	5.481-331.0	Slider	1.000	ST
	4	4.481-209.0	Lever complete	1.000	ST
	5	5.321-669.0	Handhold few	1.000	ST
X-X	6	4.427-215.0	Manifold complete only for replacement	1.000	ST
X-X	7	4.037-013.0	Hook	1.000	ST
X-X	8	5.110-596.0	Sleeve	1.000	ST



42 Rotary controller (0.114-776.0)

ET/VT (spare/wear parts)	Pos	Material #	Name	Qty.	Unit
X-X	1	4.775-470.0	Rotary controller 416L	1.000	ST
X-X	2	7.343-008.0	Locking ring 25x1,2-St-vz DIN 471	1.000	ST
	3	5.321-668.0	Handle	1.000	ST
X-X	4	4.363-695.0	Grooved ring only for replacement	1.000	ST

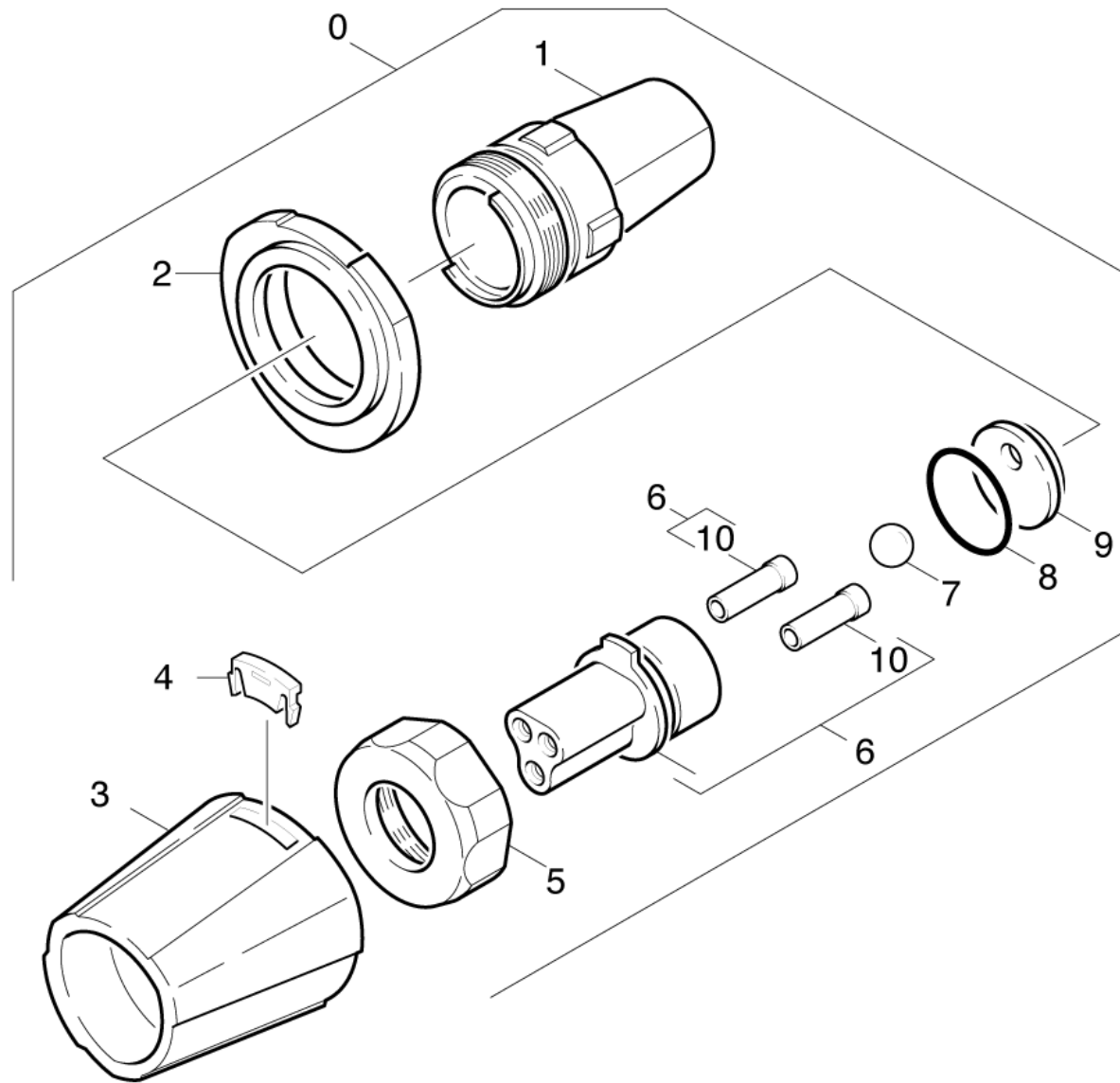


43 High pressure hose (0.114-460.0)

ET/VT (spare/wear parts)	Pos	Material #	Name	Qty.	Unit
X-X	1	6.390-185.0	Hose assembly DN8 max.31,5MPa 15m	1.000	ST
X-X	2	4.363-691.0	O-Ring seal kpl. -nur fuer Ersatz-	1.000	ST
X-X	3	2.880-990.0	Spare part set O-Ring 5x -Kaercher	1.000	ST

44 Jet pipe (0.114-109.0)

ET/VT (spare/wear parts)	Pos	Material #	Name	Qty.	Unit	from ser.nr.	up to ser.nr.
X-X	1	4.760-660.0	Jet pipe packaged only for replacement	1.000	ST	0000000000	0000000000
	2	7.303-129.0	Screw 4x16 -10.9-R2R (K-In6Rd)	6.000	ST	0000000000	0000000000
	3	5.321-855.0	Handhold few jet pipe with welding bolt	1.000	ST		
X-X	4	2.880-990.0	Spare part set O-Ring 5x -Kaercher	1.000	ST	0000000000	0000000000
X-X	5	7.401-915.0	Sphere 2,5 G20 -1.4034 DIN 5401	20.000	ST	0000000000	0000000000
X-X	6	4.363-692.0	Grooved ring kpl. -nur fuer Ersatz-	1.000	ST	0000000000	0000000000
X-X	7	6.362-524.0	O-Ring seal 17,0 X 1,5	1.000	ST	0000000000	0000000000
X-X	8	5.401-210.0	Screw connector part	1.000	ST	0000000000	0000000000



45 Nozzle (0.148-454.0)

ET/VT (spare/wear parts)	Pos	Material #	Name	Qty.	Unit	from ser.nr.	up to ser.nr.
X-X	0	4.767-065.0	Triple jet nozzle with packing 05	1.000	ST	0000000000	0000000000
	1	4.060-395.0	Housing complete only for replacement	1.000	ST	0000000000	0000000000
	2	5.394-401.0	Protection part	1.000	ST	0000000000	0000000000
	3	5.394-402.0	Protection part	1.000	ST	0000000000	0000000000
X	4	5.031-709.0	Moulded part	1.000	ST	0000000000	0000000000
	5	5.311-192.0	Union nut	1.000	ST	0000000000	0000000000
	6	4.764-158.0	Nozzle holder 05	1.000	ST	0000000000	0000000000
	7	7.401-917.0	Sphere 10,0 G100-1.4301 DIN 5401	1.000	ST	0000000000	0000000000
	8	6.362-831.0	O-Ring d. 22x2 NBR 90	1.000	ST	0000000000	0000000000
	9	5.031-370.0	Moulded part	1.000	ST	0000000000	0000000000
	10	5.031-597.0	Rectifier	2.000	ST	0000000000	0000000000