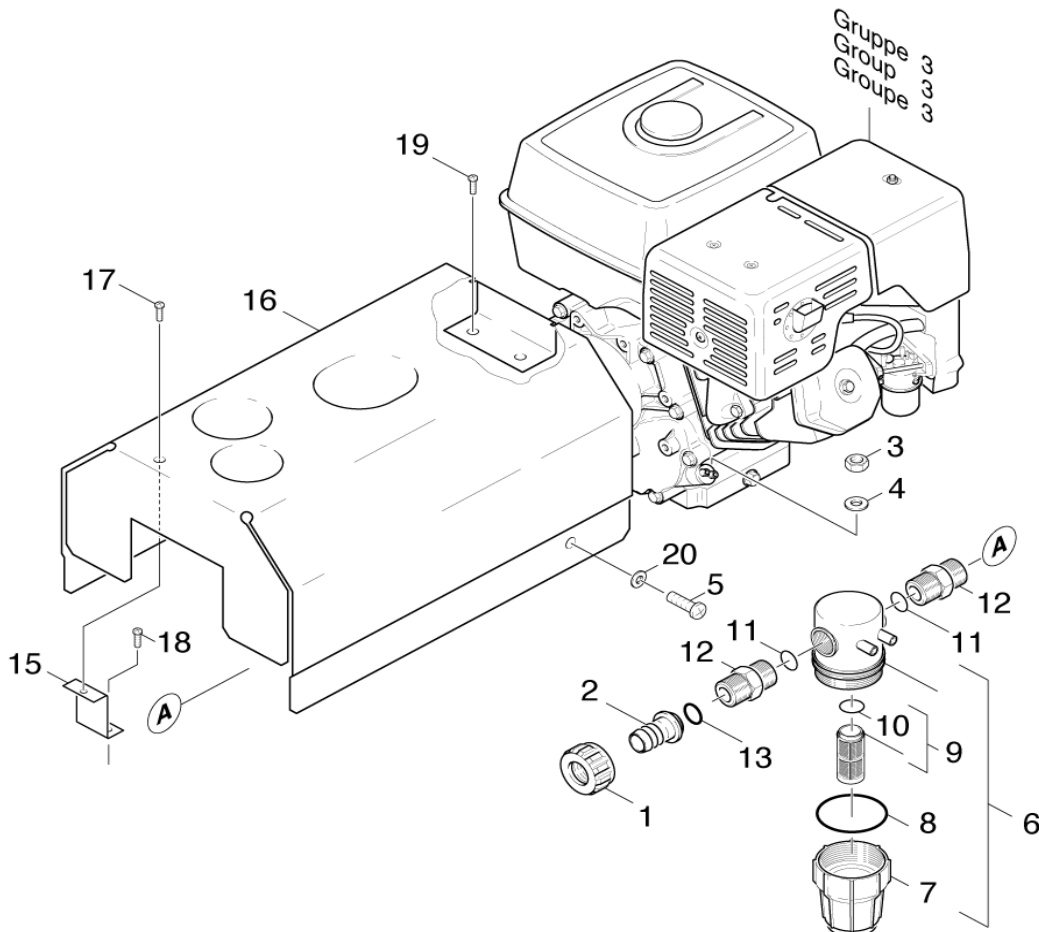


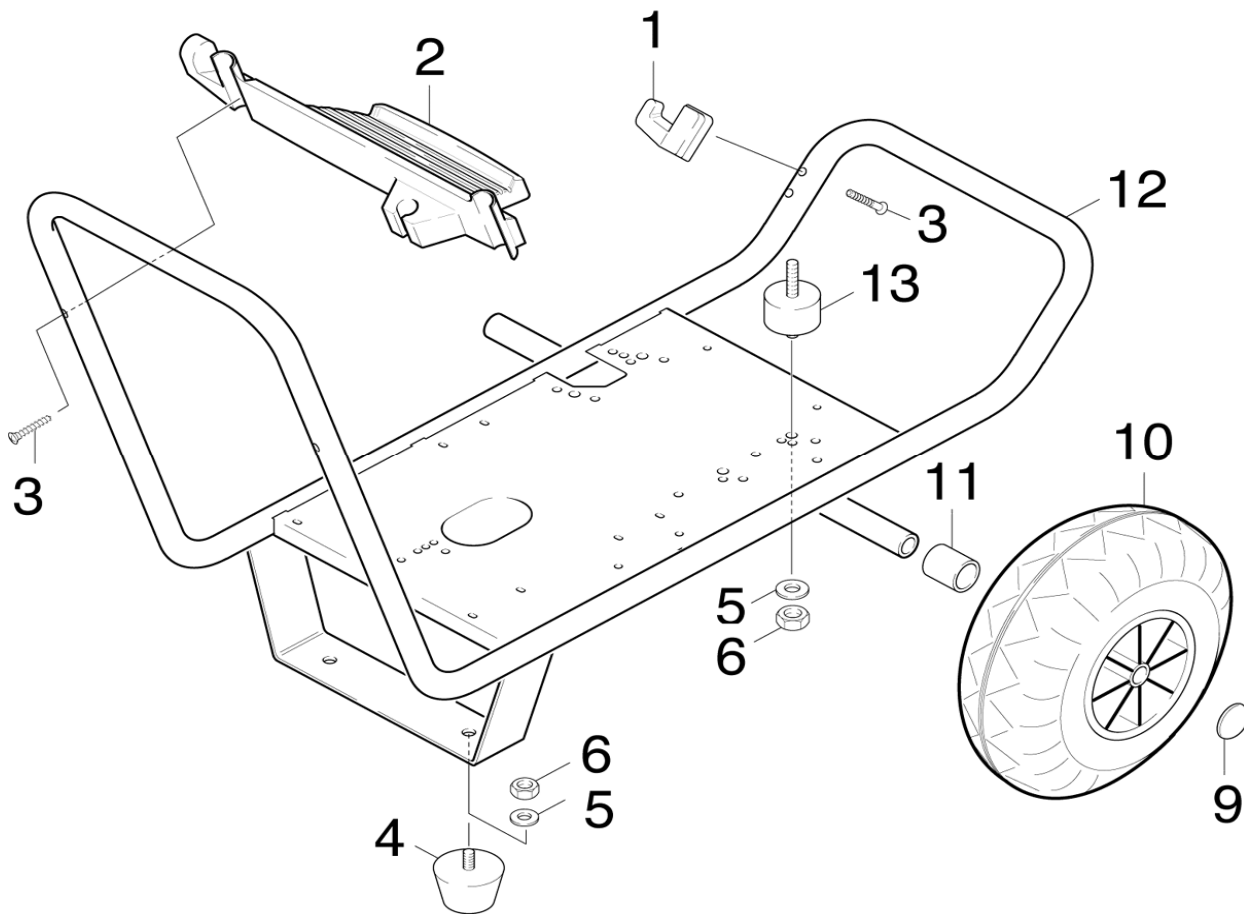
PARTS BREAKDOWN FOR HD1020B (1.810-910.0)

Location	PN	DESCRIPTION	QTY	SERIAL #	
				FROM	TO
PIECE PARTS					
1	5311-0710	Nut	1		
2	5443-2820	Hose stem	1		
3	7311-4270	Hexagon nut M8 -04-A2E ISO 10511	4		
3	7311-4230	Hexagon nut M10 -04-A2E ISO 10511	4		
4	7312-0050	Washer 10-200HV-A3E ISO 7090	4		
4	7312-0040	Washer 8 -200HV-A3E ISO 7090	4		
5	6303-1930	Cylinder head screw M 6X 12-8.8-A2R	2		
6	6414-4580	FILTER	1		
7	6414-4610	Filter cup	1		
8	6362-8930	GASKET	1		
9	6414-4590	Filter complete	1		
10	6362-7380	GASKET	1		
11	6362-4280	O RING	2		
12	5409-2210	DOUBLE NIPPLE 3/4"	2		
13	5364-1290	Flat gasket	2		
15	5046-8240	PLATE	1		
16	5066-7820	COVER HD 1020 B	1		
17	7303-0380	Screw M5x12 -St-P2R (In6Rd)	1		
18	7306-3110	OVEL HEAD SCREW M SX 8	2		
19	7306-0870	Screw M6x10 -8.8-R3R (In6Rd)	2		
20	7312-1670	Toothed lock washer A6,4-FSt-A3E DIN 67	2		



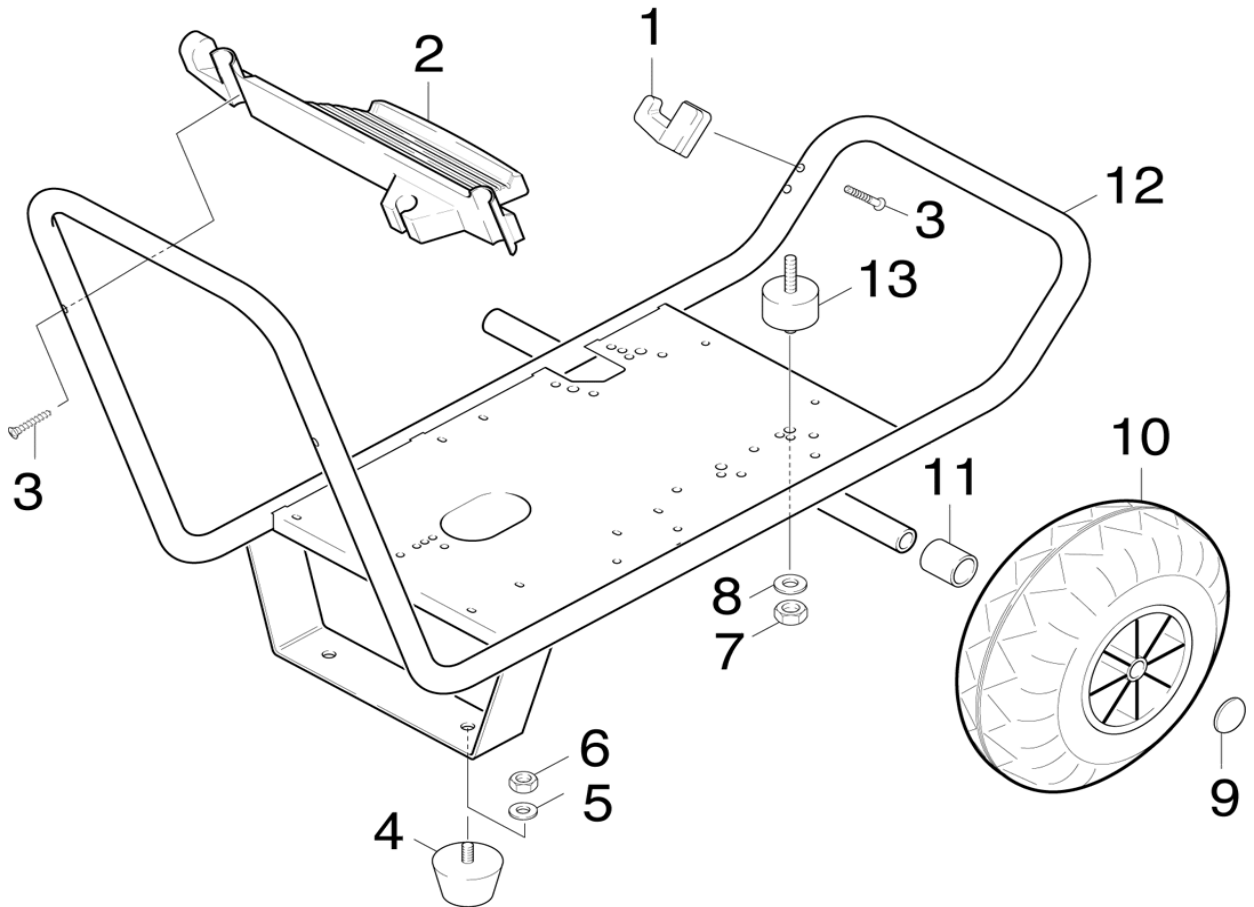
PARTS BREAKDOWN FOR HD1020B (1.810-910.0)

Location	PN	DESCRIPTION	QTY	SERIAL #	
				FROM	TO
BASE FRAME					
1	5042-4560	BRACKET	1		
2	5321-2730	HANDLE	1		
3	7303-3840	Sheet metal screw ST4,8X38,0-ST-A2S IS	4		
4	6339-1000	Rubber buffer	2		
5	7312-0040	Washer 8 -200HV-A3E ISO 7090	10		
6	7311-4270	Hexagon nut M8 -04-A2E ISO 10511	10		
9	6343-1370	QUICK FASTENER	2		
10	6435-3100	Wheel	2		
11	5110-3780	BUSHING SLEEVE	2		
12	4050-1800	FRAME	1		
13	6339-1010	Rubber buffer	4		



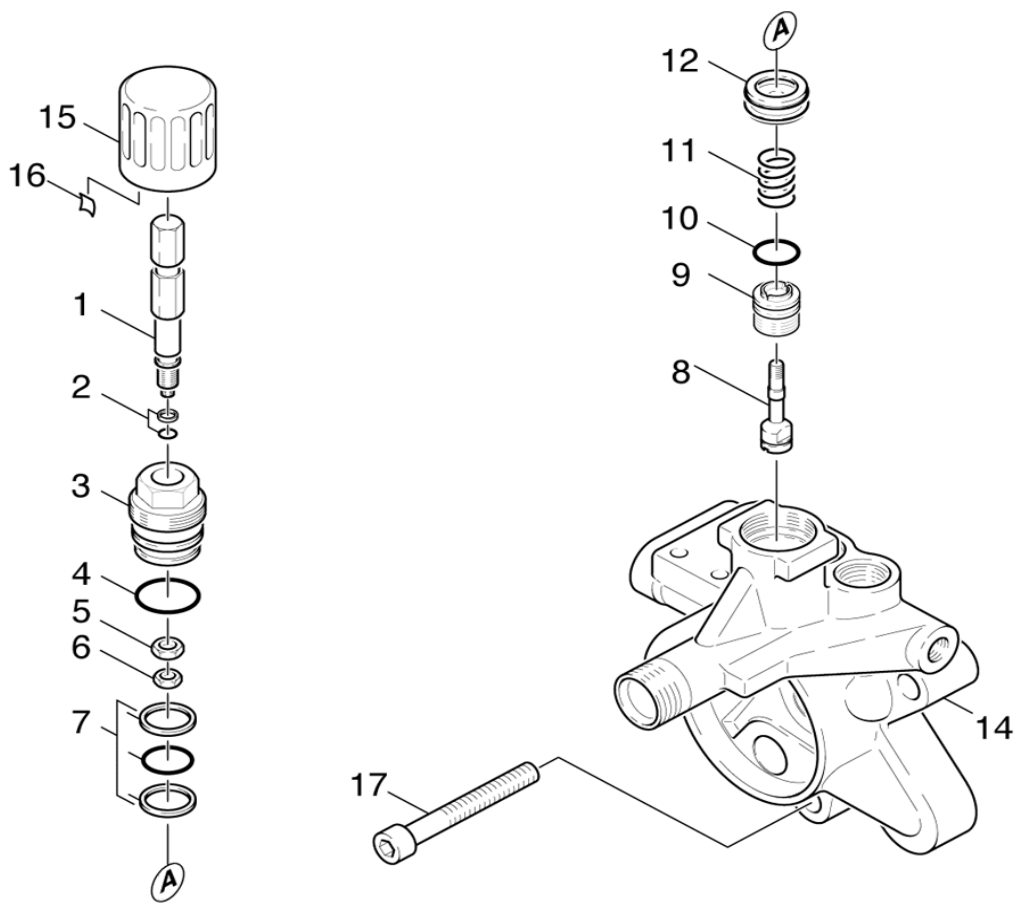
PARTS BREAKDOWN FOR HD1020B (1.810-910.0)

Location	PN	DESCRIPTION	QTY	SERIAL #	
				FROM	TO
PIECE PARTS					
1	5042-4560	BRACKET	1		
2	5321-2730	HANDLE	1		
3	7303-3840	Sheet metal screw ST4,8X38,0-ST-A2S IS	4		
4	6339-1000	Rubber buffer	2		
5	7312-0040	Washer 8 -200HV-A3E ISO 7090	2		
6	7311-4270	Hexagon nut M8 -04-A2E ISO 10511	2		
7	7311-4230	Hexagon nut M10 -04-A2E ISO 10511	8		
8	7312-0050	Washer 10-200HV-A3E ISO 7090	8		
9	6343-1370	QUICK FASTENER	2		
10	6435-3100	Wheel	2		
11	5110-3780	BUSHING SLEEVE	2		
12	4050-1800	FRAME	1		
13	6339-0750	Rubber buffer D50X30	4		



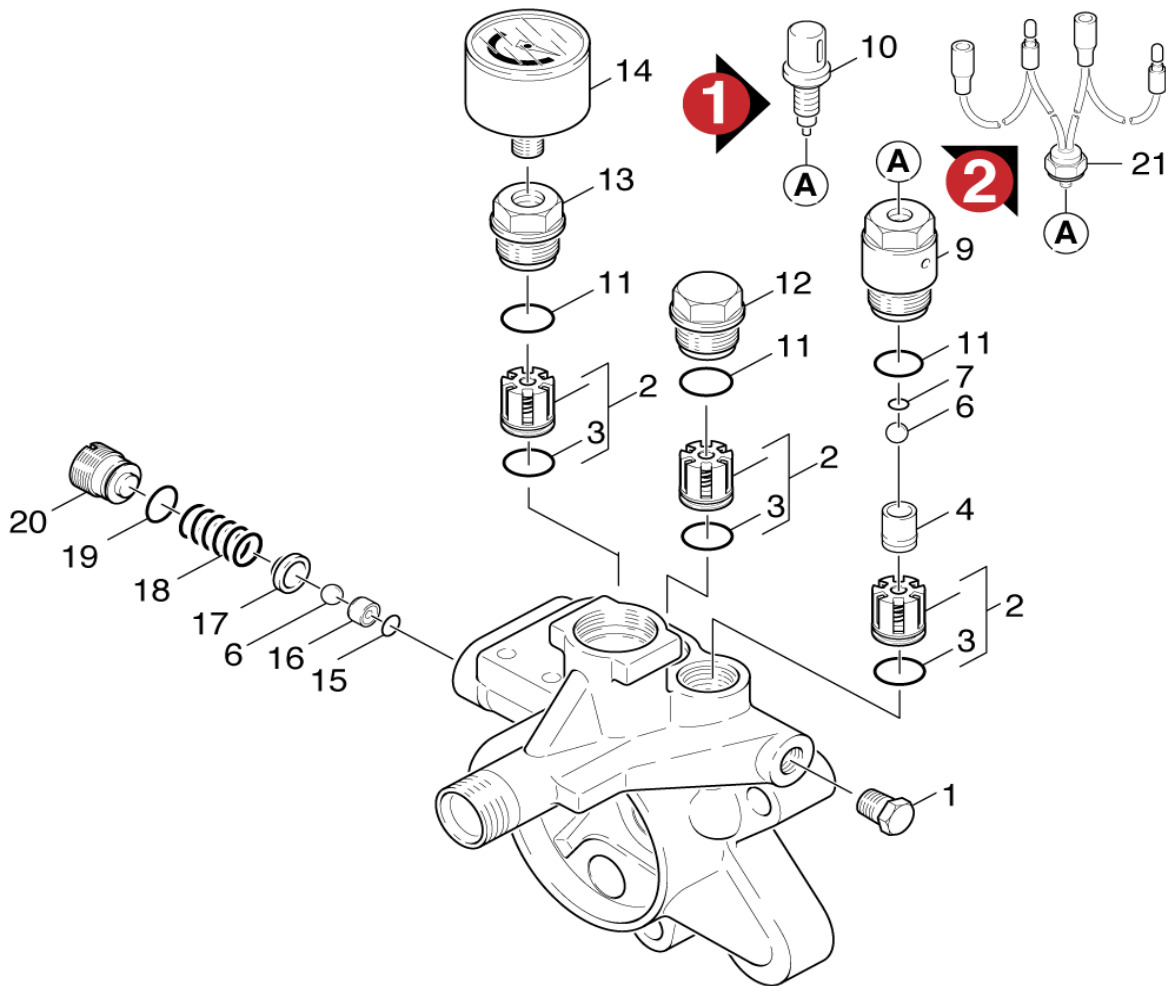
PARTS BREAKDOWN FOR HD1020B (1.810-910.0)

Location	PN	DESCRIPTION	QTY	SERIAL #	
				FROM	TO
PUMP - Cylinder Head					
1	5304-0590	Hexagonal head screw	1		
2	6362-4680	O-RING COMPL	1		
3	5411-0570	Screw plug	1		
4	6362-4120	O-Ring seal 22x1,5-NBR 70	1		
5	7311-2180	Hexagon nut M 6-LH-CU2 ISO 4035	1		
6	7311-4310	Hexagon nut M 5-1.4305 ISO 10511	1		
7	6362-6100	O RING SET	1		
8	5584-0510	PIN	1		
9	5581-0780	VALVE SEAT	1		
10	6362-4800	O-Ring seal 12,42x 1,78	1		
11	5332-2290	SPRING	1		
12	5553-2170	Piston	1		
14	4550-2970	CYLINDER HEAD	1		
15	5321-1980	Handhold	1		
16	6313-0030	SPRING	1		
17	7306-0700	SCREW	3		
100	2884-0160	PUMP SET HD1020 B	1		



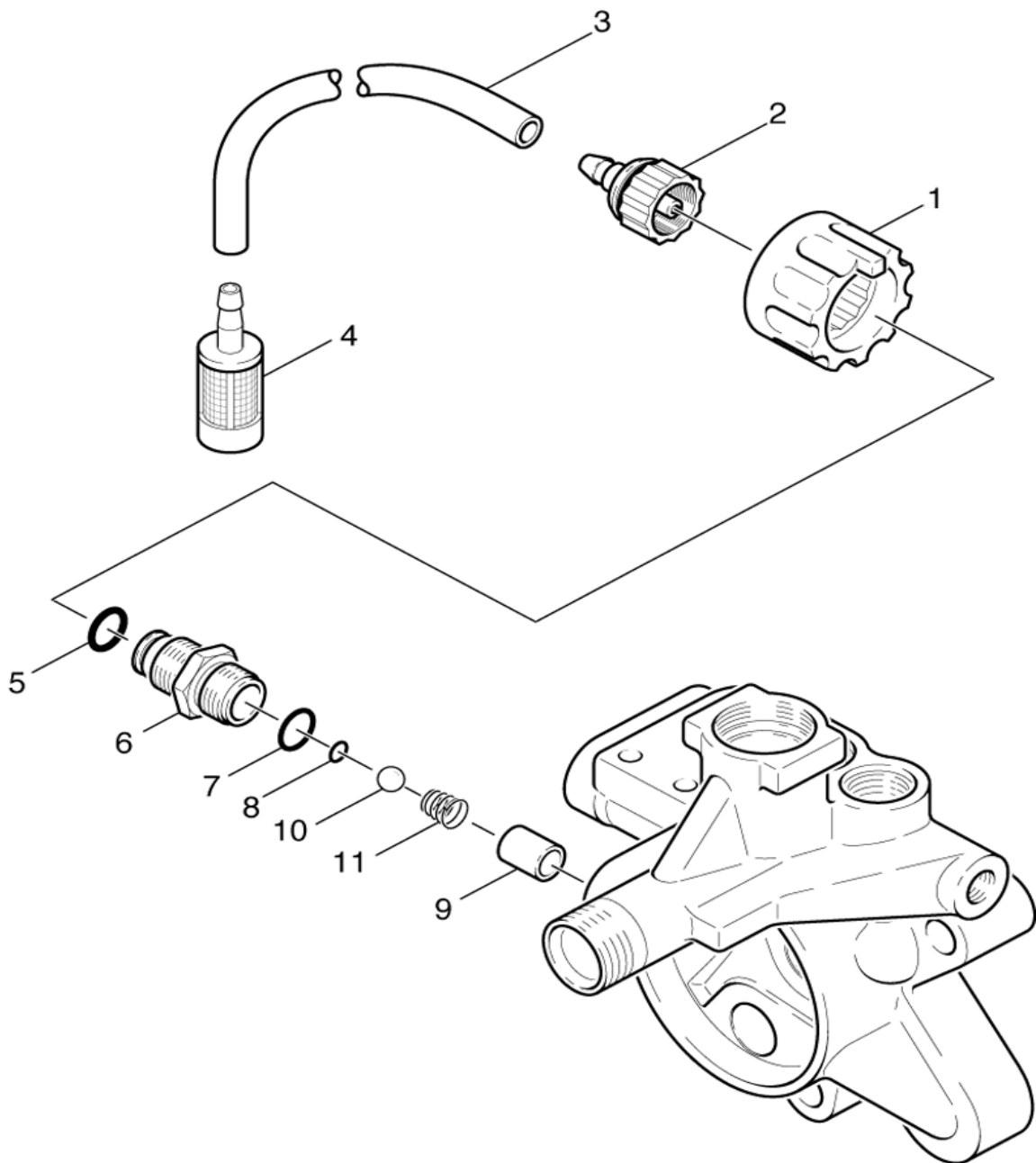
PARTS BREAKDOWN FOR HD1020B (1.810-910.0)

Location	PN	DESCRIPTION	QTY	SERIAL #	
				FROM	TO
PUMP - Physical Page					
1	5411-0940	CLOSING SCREW	1		
2	2884-5120	Valve (3 Stueck)	1		
3	6362-3810	O-Ring seal 13,0x2,0	3		
4	5028-6920	Tube	1		
5	5332-3650	HELICAL SPRING	1		
6	7401-9080	Sphere 7 G300 -1.4301 DIN 5401	2		
7	6362-3830	O RING	1		
9	5583-1420	VALVE SEAT	1		
10	4580-2910	VALVE	1		
11	6362-1530	O RING	3		
12	5583-1170	VALVE SCREW	3		
13	5583-1410	VALVE SCREW	1		
14	6421-2140	PRESSURE GAUGE 0-300B	1		
15	6362-3860	O-Ring seal 5,0 x 1,5-NBR 80	1		
16	5581-1070	VALVE SEAT	1		
17	5582-0750	VALVE HEAD	1		
18	5332-2030	Helical spring	1		
19	6362-1690	O RING 12.0 X 2.0	1		
20	5583-0890	VALVE SCREW	1		
21	4686-0010	TEMPERATURE LIMITER	1		
100	2884-0160	PUMP SET HD1020 B	1		



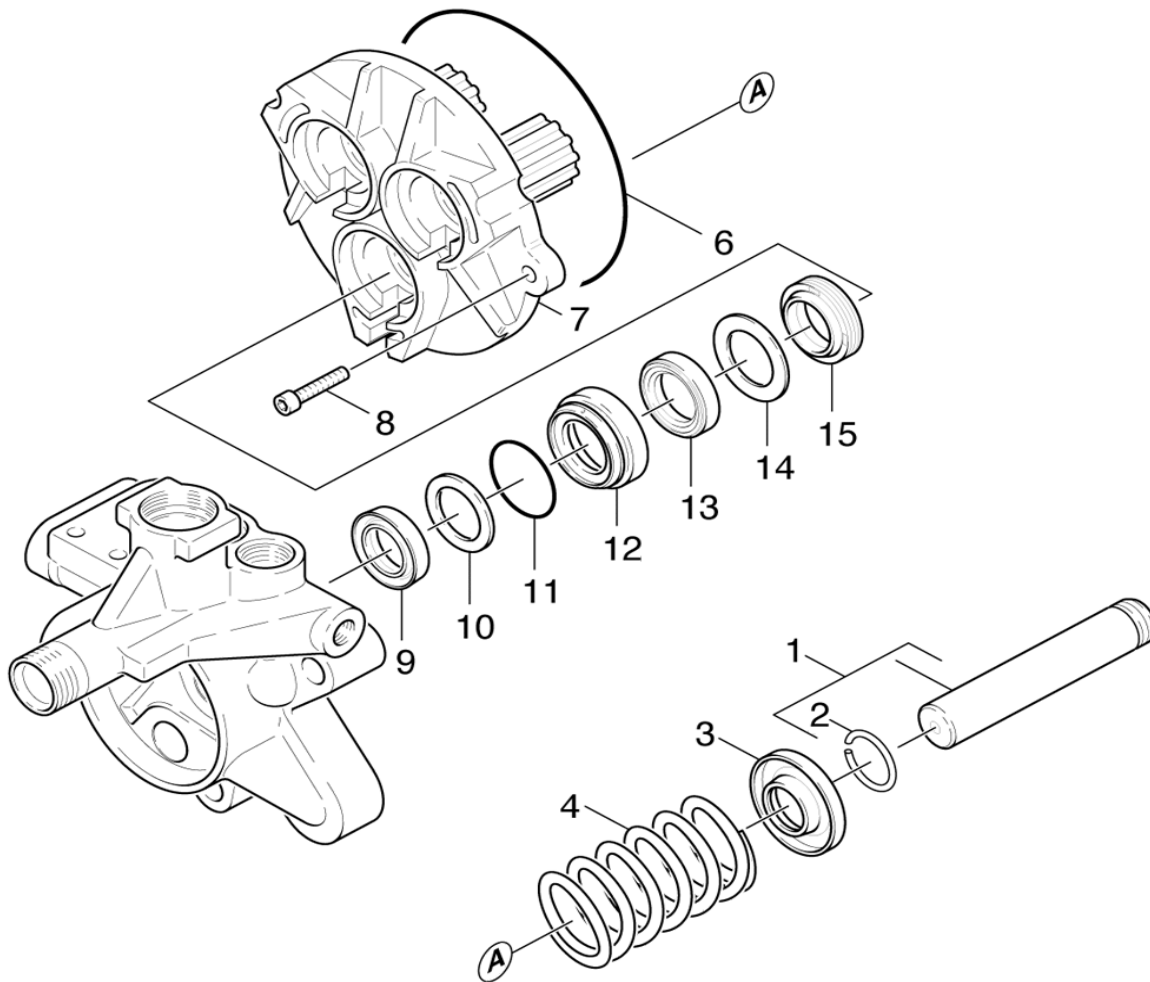
PARTS BREAKDOWN FOR HD1020B (1.810-910.0)

Location	PN	DESCRIPTION	QTY	SERIAL #	
				FROM	TO
PUMP - Chemistry					
1	5321-3180	Handhold	1		
2	5443-2810	NIPPLE	1		
3	6388-2160	Hose DN 5	1		
4	5731-6090	Filter with weight	1		
5	6362-1510	O-Ring d. 10 x 2 NBR 70	1		
6	5402-5230	SCREW UNION	1		
7	6362-5330	O'RING	1		
8	6362-3830	O RING	1		
9	5028-6920	Tube	1		
10	7401-9080	Sphere 7 G300 -1.4301 DIN 5401	1		
11	5332-1240	Helical spring	1		
100	2884-0160	PUMP SET HD1020 B	1		



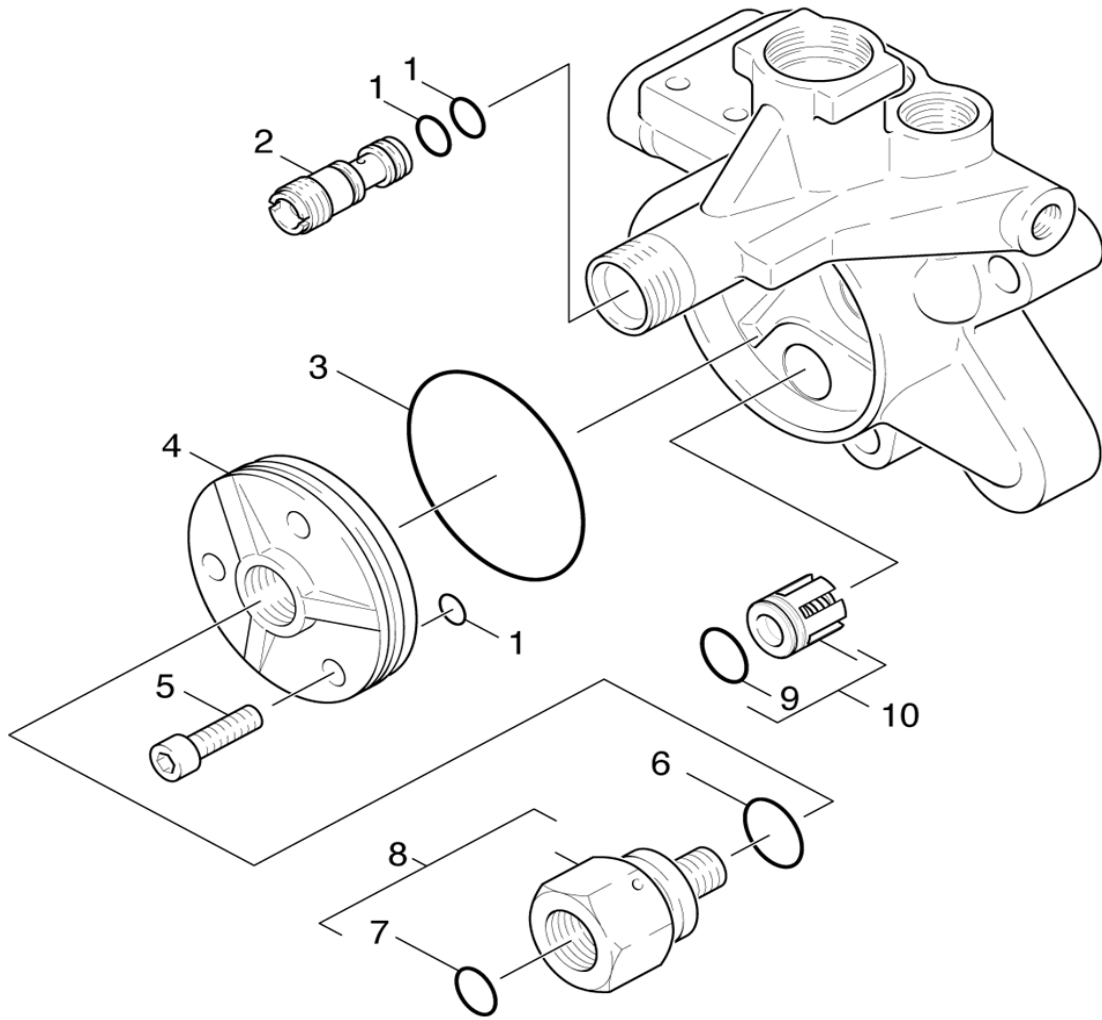
PARTS BREAKDOWN FOR HD1020B (1.810-910.0)

Location	PN	DESCRIPTION	QTY	SERIAL #	
				FROM	TO
PUMP - Piston					
1	4553-1180	PISTON COMPLETE	3		
2	7343-4730	Snap ring A18-FST DIN 7993	3		
3	5030-6020	Moulded part	3		
4	5332-1390	Helical spring	3		
6	6362-6130	O RING	1		
7	5060-3260	Housing	1		
8	7306-0230	Cylinder head screw M6x25 -8.8-A2E ISO4	2		
9	6365-3330	Grooved ring 18X26X5,4	3		
10	5115-4310	Washer	3		
11	6362-4060	O RING	3		
12	5112-3400	Bush	3		
13	6365-3320	Compact seal 18x28x5,8	3		
14	5115-4320	Washer	3		
15	6365-3340	GROOVED RING	3		
100	2884-0160	PUMP SET HD1020 B	1		



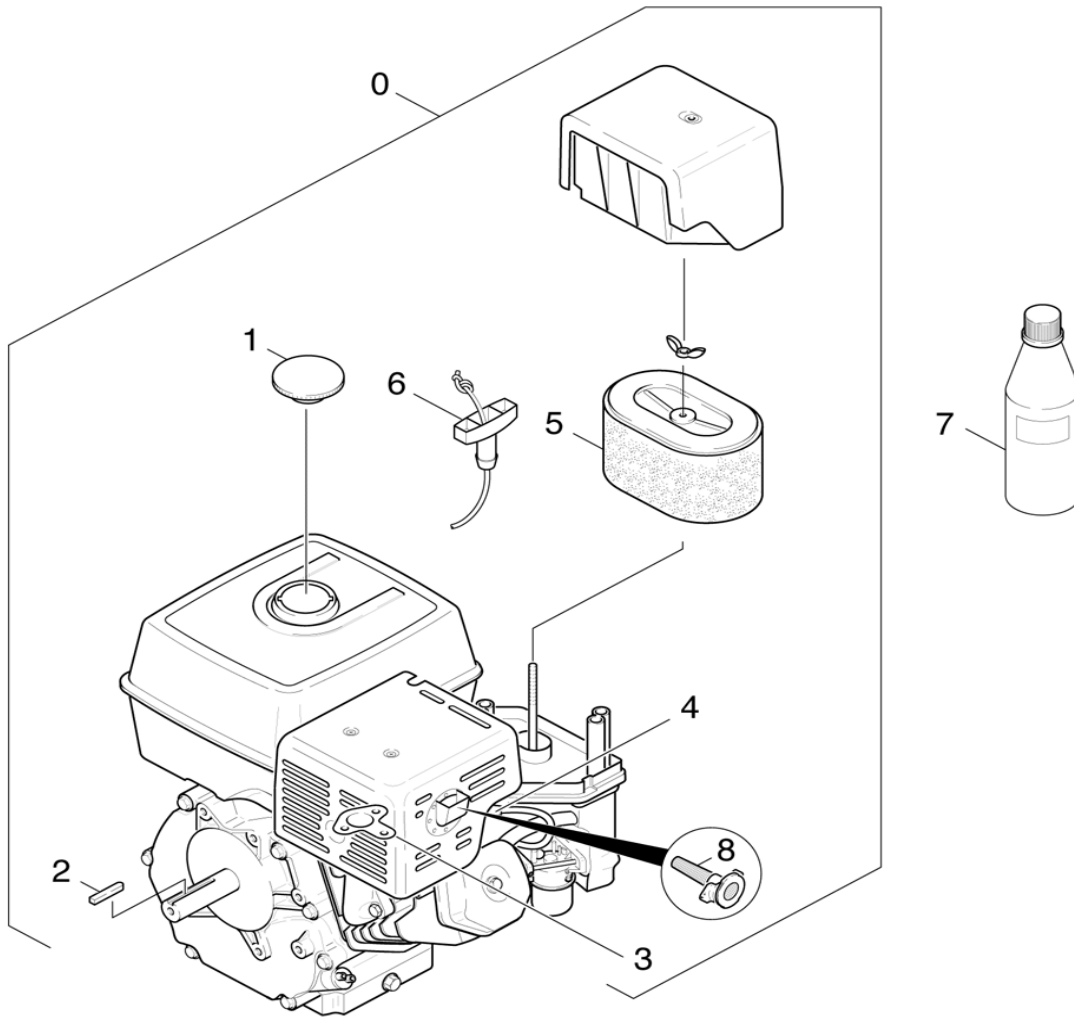
PARTS BREAKDOWN FOR HD1020B (1.810-910.0)

Location	PN	DESCRIPTION	QTY	SERIAL #	
				FROM	TO
PUMP - Suction Side					
1	6362-3840	O-Ring seal 9,0 x 1,5	6		
2	5769-1520	Nozzle insert D1,9/D2,5/L38	1		
3	6362-2040	O RING	1		
4	5063-6520	COVER	1		
5	7306-0420	Cylinder head screw M8x25 -8.8-A2E ISO4	3		
6	6362-4120	O-Ring seal 22x1,5-NBR 70	1		
7	6362-3950	O RING	1		
8	4402-0440	SCREW UNION	1		
9	6362-3810	O-Ring seal 13,0x2,0	3		
10	2884-5120	Valve (3 Stueck)	1		
100	2884-0160	PUMP SET HD1020 B	1		



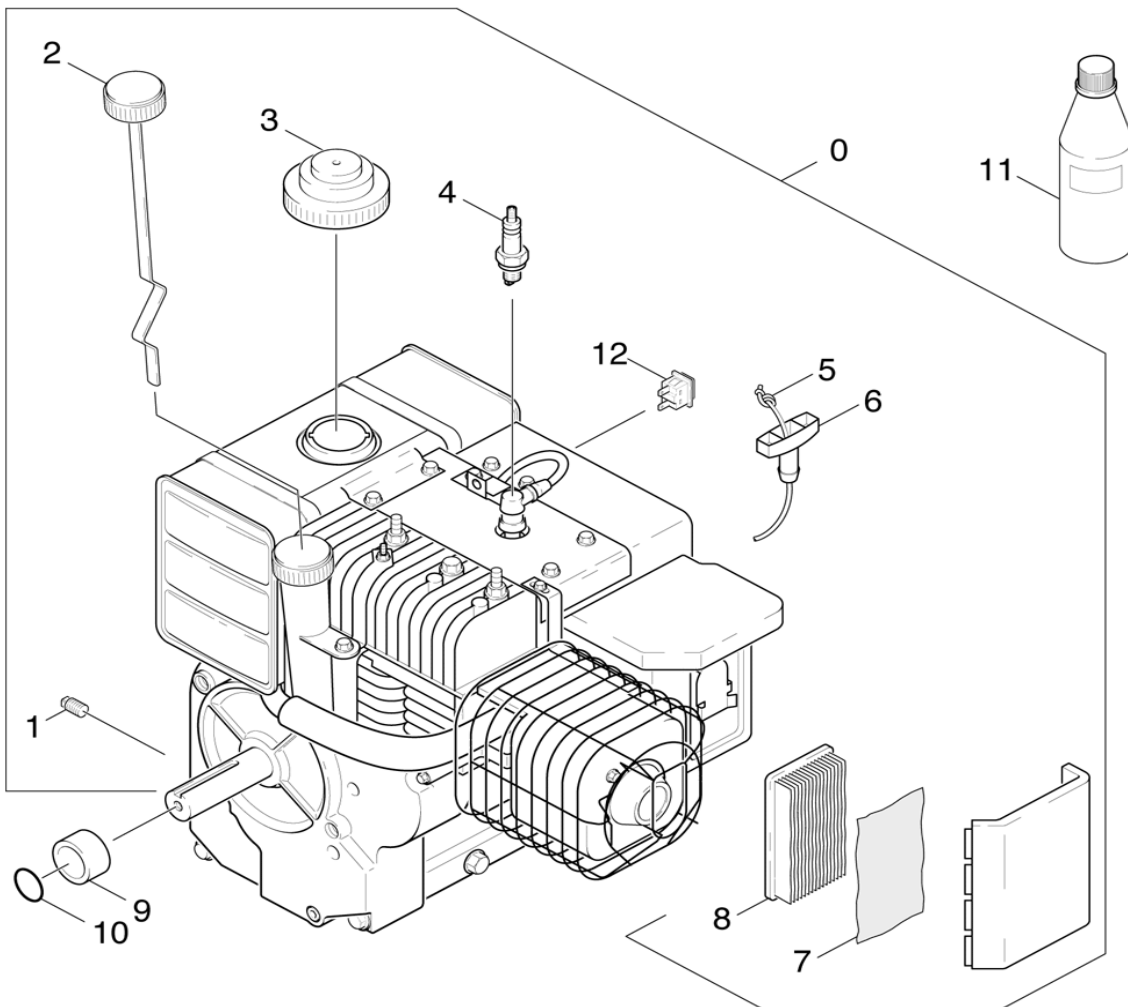
PARTS BREAKDOWN FOR HD1020B (1.810-910.0)

Location	PN	DESCRIPTION	QTY	SERIAL #	
				FROM	TO
MOTOR -					
0	6491-3420	GASOLINE ENGINE 11PS	1		
1	6491-3470	CAP OF A TANK	1		
2	6491-1760	SPRING	1		
3	6491-3480	SEAL	1		
4	6618-0900	SPARK PLUG	1		
5	6491-3450	AIR FILTER	1		
6	6491-3500	Starter rope complete	1		
7	6288-0500	OIL 1 LITRE	2		
8	6661-1900	Spark arrester	1		



PARTS BREAKDOWN FOR HD1020B (1.810-910.0)

Location	PN	DESCRIPTION	QTY	SERIAL #	
				FROM	TO
MOTOR -					
0	6491-4990	GASOLINE ENGINE	1		
1		Stockpiling discontinued	1		
2		Stockpiling discontinued	1		
3		Stockpiling discontinued	1		
4	6951-1920	IGNITION PLUG	1		
5	6491-2120	STARTER ROPE	1		
6	6491-2600	HANDLE F.STARTERSEIL	1		
7	6491-2550	AIR FILTER FLEECE	1		
8	6491-5190	AIR FILTER	1		
10	6362-4110	GASJKET	1		
11	6288-0500	OIL 1 LITRE	2		
12	6491-5180	SWITCH	1		



PARTS BREAKDOWN FOR HD1020B (1.810-910.0)

Location	PN	DESCRIPTION	QTY	SERIAL #	
				FROM	TO
ACTUATION					
1	5063-6510	Cover	1		
2	5132-1070	Plug	1		
3	5070-1940	Tank	1		
4	5363-2260	Joint ring	1		
5	5411-0620	Screw plug	1		
6	6362-5850	Seal	1		
7	7367-0110	Radial shaft seal ring A40x52x7-NBR DIN	1		
8	6401-2250	TAPER ROLLER BEARING	1		
9	6401-2000	Pressure disc	1		
10	6401-1230	Axial roller cage	1		
11	6401-1220	Rotor disc	1		
12	6362-8880	Gasket disc 32x7	1		
13	5120-2690	SWASH PLATE	1		
14	6362-6120	O RING 24.77X 5.33	1		
15	6288-0500	OIL 1 LITRE	1		
16	7382-2330	Screw plug M14x1,5-A-CuZn DIN 7604	1		
17	7362-0050	Joint ring 14x18-CU DIN 7603	1		
18	5060-5400	HOUSING	1		
19	6304-0350	CHEESE HEAD SCREW	4		

