

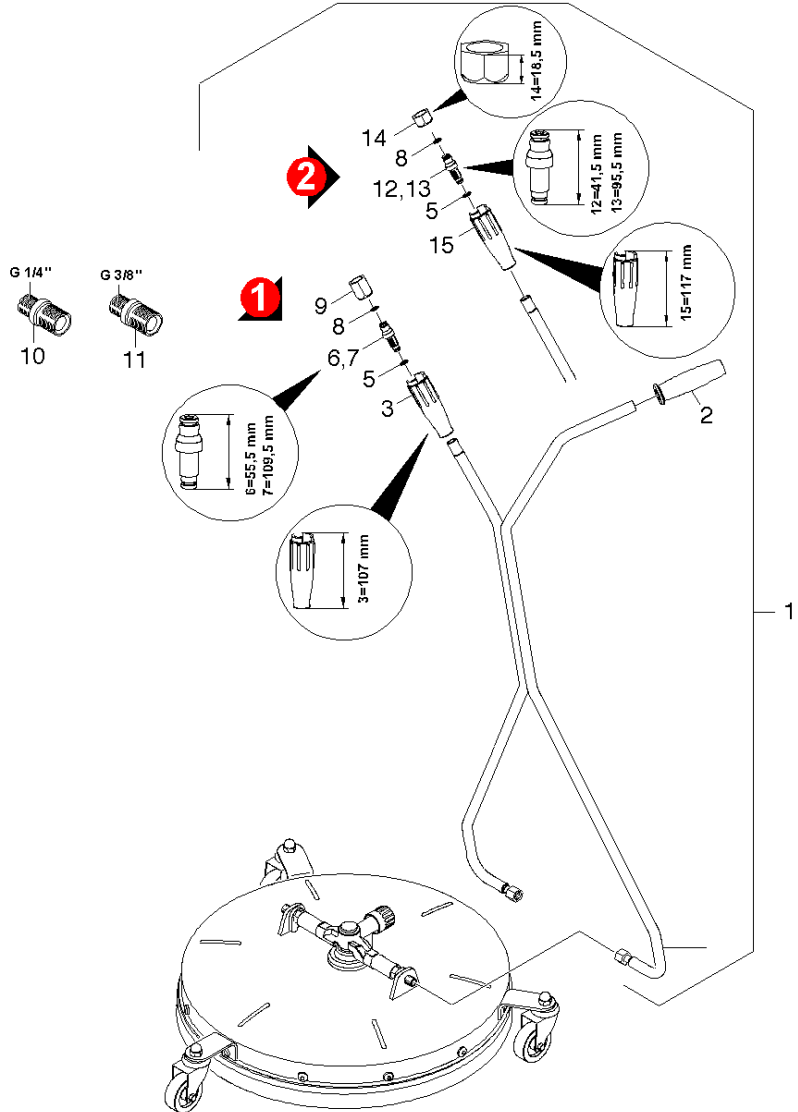
Spare parts list
(5.970-321.0) Spare parts list FR 50

Table of contents

Spare parts list FR 50 (5.970-321.0)	6
10 Handhold (0.198-927.0).....	7
20 Power brush (0.198-930.0).....	9

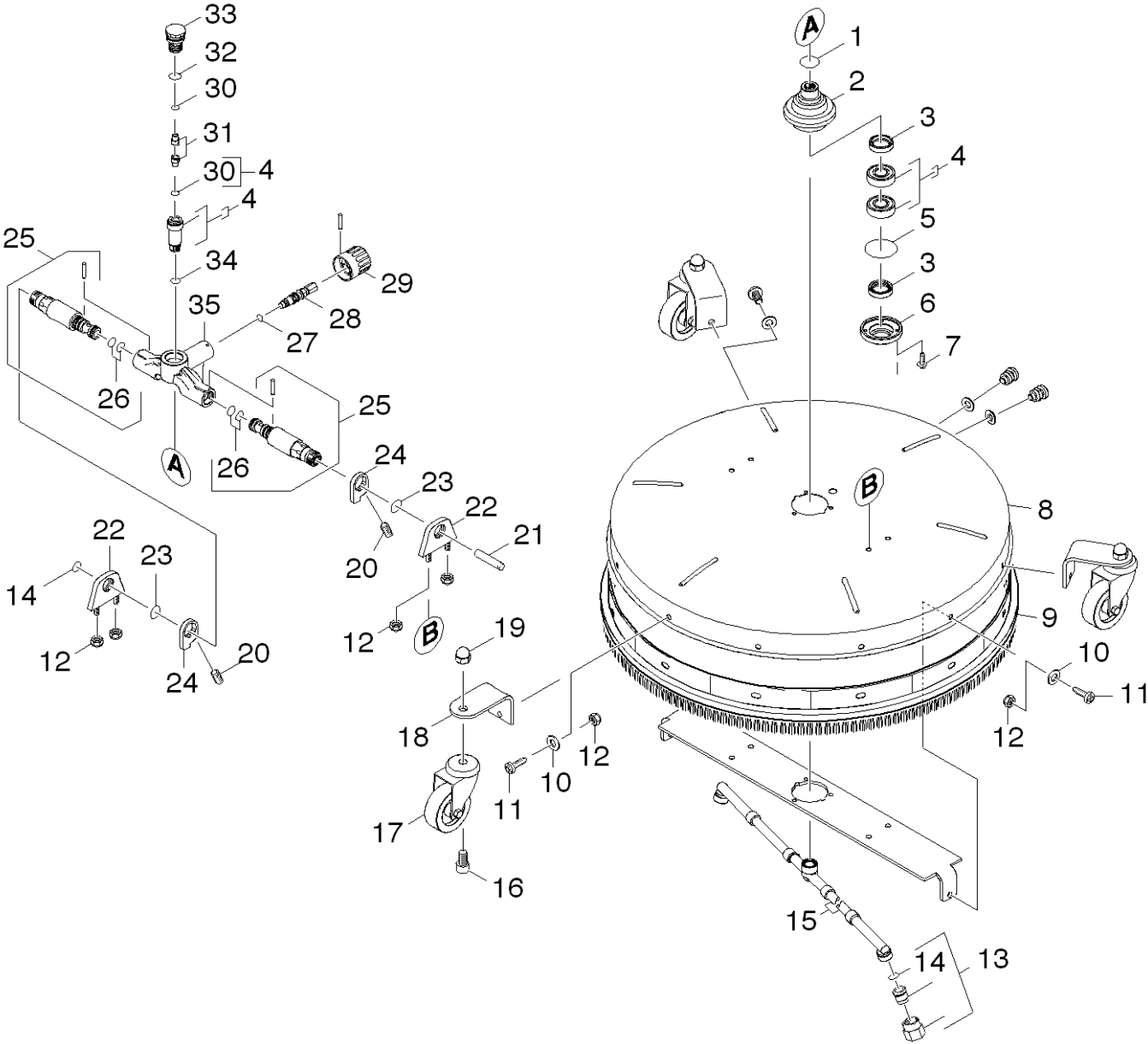
Spare parts list FR 50 (5.970-321.0)

Pos	Name	Qty.	Unit	from ser.nr.	up to ser.nr.
10	Handhold	1.000	ST	0000000000	0000000000
20	Power brush	1.000	ST	0000000000	0000000000



10 Handhold (0.198-927.0)

ET/VT (spare/wear parts)	Pos	Material #	Name	Qty.	Unit	from ser.nr.	up to ser.nr.	var. information
	1	4.321-172.0	Handhold complete	1.000	ST	0000000000	0000000000	
	2	5.321-000.0	Handhold	1.000	ST	0000000000	0000000000	VERSION 1
	3	5.394-383.0	Protection part	1.000	ST	0000000000	0000000000	117 MM VERSION 1
	5	6.362-690.0	O-Ring seal 7x2 - NBR 70	1.000	ST	0000000000	0000000000	
	6	5.108-268.0	Nipple	1.000	ST	0000000000	0000000000	55,5MM VERSION 1
	7	5.108-276.0	Nipple	1.000	ST	0000000000	0000000000	109,5MM VERSION 1
X-X	8	2.880-154.0	O-Ring kit	1.000	ST	0000000000	0000000000	
	9	5.311-188.0	Union nut	1.000	ST	0000000000	0000000000	VERSION 1
	10	5.409-523.0	Adapter 1/4"	1.000	ST	0000000000	0000000000	1/4"
Position text: / 2.640-685.0								
	11	5.409-524.0	Adapter 3/8"	1.000	ST	0000000000	0000000000	3/8"
Position text: / 2.640-685.0								
	12	5.108-293.0	Nipple	1.000	ST			41,5 VERSION 2
	13		Stockpiling discontinued	1.000	ST			95,5 VERSION 2
	14	5.311-188.0	Union nut	1.000	ST			VERSION 2
	15	5.394-383.0	Protection part	1.000	ST			107 MM VERSION 2



20 Power brush (0.198-930.0)

ET/VT (spare/wear parts)	Pos	Material #	Name	Qty.	Unit	from ser.nr.	up to ser.nr.
	1	6.362-831.0	O-Ring d. 22x2 NBR 90	1.000	ST	0000000000	0000000000
	2	5.108-267.0	Turned part	1.000	ST	0000000000	0000000000
X	3	7.367-000.0	Radial shaft seal ring A20x30x7-NBR DIN	2.000	ST	0000000000	0000000000
	4	4.250-078.0	Bearing complete	1.000	ST	0000000000	0000000000
X-X	5	6.362-475.0	O-Ring seal 44,17X 1,78-NBR 70	1.000	ST	0000000000	0000000000
	6	5.122-443.0	Flange	1.000	ST	0000000000	0000000000
	7	7.306-180.0	Screw M5x10-A2-70 (In6Rd)	3.000	ST	0000000000	0000000000
	8	5.058-954.0	Cover	1.000	ST	0000000000	0000000000
	9	6.369-942.0	Bristle rink	1.000	ST	0000000000	0000000000
X-X	10	7.312-026.0	Washer 6 -A2 ISO 7090	13.000	ST	0000000000	0000000000
X-X	11	7.306-192.0	Screw M 6x 12-A2-70 (In6Rd)	13.000	ST	0000000000	0000000000
X-X	12	7.311-422.0	Hexagon nut M 6-1.4305 ISO 10511	4.000	ST	0000000000	0000000000
	13		Stockpiling discontinued	1.000	ST	0000000000	0000000000
Position text: / 2.640-685.0							
X	13	2.639-188.0	Nozzle pack 04-1100-1300 l/h	2.000	ST	0000000000	0000000000
Position text: / 2.640-679.0							
X-X	13	2.639-187.0	Nozzle pack 025	2.000	ST	0000000000	0000000000
Position text: / 2.640-679.0							
X-X	13	2.640-442.0	Nozzle pack 032	2.000	ST	0000000000	0000000000
Position text: / 2.640-679.0							
	13	2.640-781.0	Nozzle pack 062	2.000	ST	0000000000	0000000000
Position text: / 2.640-679.0							
	13		Stockpiling discontinued	1.000	ST	0000000000	0000000000
Position text: / 2.640-685.0							
	13	2.640-840.0	Nozzle pack 040	1.000	ST	0000000000	0000000000
Position text: / 2.640-685.0							

20 Power brush (0.198-930.0)

ET/VT (spare/wear parts)	Pos	Material #	Name	Qty.	Unit	from ser.nr.	up to ser.nr.
X-X	14	2.880-154.0	O-Ring kit	3.000	ST	0000000000	0000000000
	15	4.764-167.0	Nozzle holder	1.000	ST	0000000000	0000000000
Position text: / 2.640-679.0							
	15	4.764-167.0	Nozzle holder	1.000	ST	0000000000	0000000000
Position text: / 2.640-685.0							
	16	7.306-234.0	Cylinder head screw M10x20-A4-70 ISO 47	3.000	ST	0000000000	0000000000
	17	6.435-721.0	Castor D60	3.000	ST	0000000000	0000000000
	18	5.057-354.0	Holder	3.000	ST	0000000000	0000000000
	19	7.311-402.0	Cap nut M10-A1-50 DIN 1587	3.000	ST	0000000000	0000000000
X-X	20	7.307-304.0	Threaded pin M4x6 -A2-21H ISO 4028	2.000	ST	0000000000	0000000000
	21	7.314-359.0	Straight pin 8x30-A -St ISO 8734	1.000	ST	0000000000	0000000000
	22	5.006-828.0	Holder	2.000	ST	0000000000	0000000000
	23	6.362-883.0	O-Ring seal 18,0 X 2,5-EPDM	2.000	ST	0000000000	0000000000
	24	5.317-124.0	Stop	2.000	ST	0000000000	0000000000
	25	2.884-502.0	Spare part set shaft	2.000	ST	0000000000	0000000000
X-X	26	6.362-650.0	O-Ring seal 12,0 X 2,0-FPM 75	4.000	ST	0000000000	0000000000
	27	6.362-724.0	O-Ring seal 5,0 X 2,0	1.000	ST	0000000000	0000000000
	28	5.108-265.0	Turned part	1.000	ST	0000000000	0000000000
	29	5.321-748.0	Handhold	1.000	ST	0000000000	0000000000
X	30	6.362-658.0	O-Ring seal 7 X 1,5-NBR 90	2.000	ST	0000000000	0000000000
X-X	31	5.111-322.0	Sleeve	2.000	ST	0000000000	0000000000
	32	6.362-534.0	O-Ring seal 18,0 X 2,0-NBR 70	1.000	ST	0000000000	0000000000
	33	5.108-263.0	Turned part	1.000	ST	0000000000	0000000000
	34	6.362-388.0	O-Ring seal 8,0x1,5 -EPDM 70	1.000	ST	0000000000	0000000000
	35	5.481-357.0	Manifold	1.000	ST		