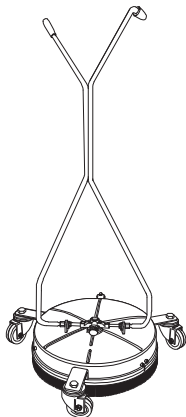




KÄRCHER

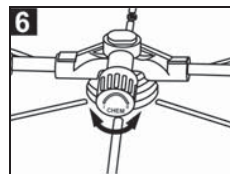
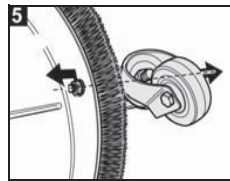
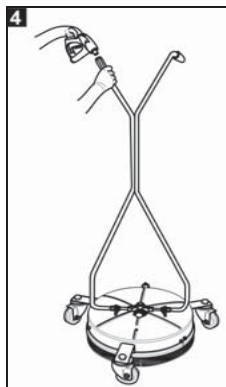
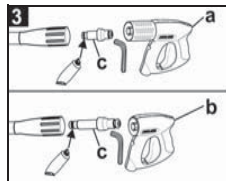
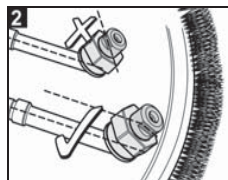
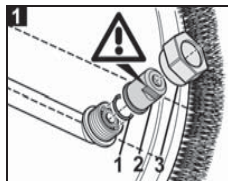
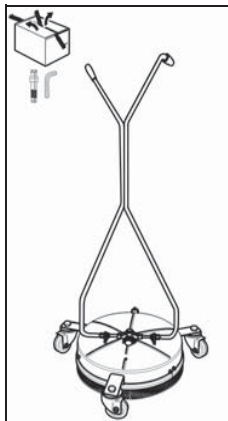
FR 50



www.kaercher.com



5.961-305 A2009305 01/06





Dear Customer,

Please read and comply with these instructions prior to the initial operation of your appliance. Retain these operating instructions for future reference or for subsequent possessors.

For your own safety!

Application

- Check the unit is in perfect condition and safe for operation with the working equipment before use. It may not be used if it is not in perfect condition.
- No modifications may be made to the machine.

Operation



Warning!

Lengthy operation of the unit can lead to vibration-related circulatory disturbances of the hands.

A generally valid use duration cannot be specified, since this is dependent upon several influence factors:

- Personal predisposition to bad circulation (frequent suffering from cold fingers, pins and needles in fingers).
- In low ambient temperatures. Wear warm gloves to keep hands warm.
- Gripping tightly impedes circulation.
- Continuous operation is more detrimental than operation interrupted by breaks.

We recommend a medical examination if the unit is regularly used for extensive, continuous operation and the corresponding symptoms (such as, for example, pins and needles in fingers or cold fingers) are recurrent.

- Never reach underneath the unit when the high pressure cleaner is in operation
- Beware of the rotation arm which is still moving after switching off the unit
- Never point the jet at persons or animals
- The pipes of the pushbar can become hot when operating with hot water. Hold the unit by the handle and the hand gun

Use for the intended purpose

The unit is suitable for cleaning interior and outdoor floors in connection with a high pressure cleaner.

Maximum water pressure:
25 MPa (250 bar)

Maximum water temperature:
85 °C (185 °F)

Only Kärcher-cleaning agents are permissible for operation.

Important notes

Please read the information in the operating manual carefully before starting the unit.

Notify your dealer immediately in the case of transport damages.



Please dispose of packaging in an environmentally friendly way

The packing materials are recyclable. Please do not throw packing in the waste bin but take it to a recycling depot.



Please dispose of old units in an environmentally friendly way

Old units contain variable recyclable materials which should be taken to the appropriate place. Batteries, oil and similar materials must be disposed of safely. Please dispose of old units through suitable collection systems.

Nozzle packages



Warning!

The required nozzle packages are adapted to the corresponding connecting device and must be ordered separately.

High pressure cleaner
with flow volume 650-850 l/h
Nozzle package 2.639-187

High pressure cleaner
with flow volume 850-1100 l/h
Nozzle package 2.640-442

High pressure cleaner
with flow volume 1100-1300 l/h
Nozzle package 2.639-188

High pressure cleaner
with flow volume 1300-1800 l/h
Nozzle package 2.640-781

High pressure cleaner
with flow volume 1800-2200 l/h
Nozzle package 2.640-282

Assembly of nozzle package

Fig. 1

Note:

Follow the order!

- Insert the O-ring (1) in the groove of the rotation arm
- Mount the nozzle (2)
- Tighten the nozzle lightly with the union nut (3)

Fig. 2



Warning!

The jet must be aligned parallel to the rotation arm

- Align the key area of the nozzle (wrench size 10) parallel to the rotation arm
- Tighten the union nut (wrench size 22) with a wrench

Floor cleaning

Fig. 3

The unit is equipped for connecting a long hand gun (a). To connect a short hand gun (b) the nipple (c) must be replaced with the nipple enclosed to achieve best possible ergonomics.

Note:

Coat the O-ring seal of the nipple with the grease provided before assembling.

Fig. 4

- Connect the hand gun of the high pressure cleaner to the unit and tighten by hand

Remove the wheel set

(if necessary)

Fig. 5

- Leave the steering rollers fixed to the holder
- Unscrew the holder from the unit
- Fix the screws back on the unit (to stabilise the brush insert)

Cleaning agent suction

With unheated high pressure cleaner

Fig. 6

- Turn the valve clockwise to the stop, the unit operates with high pressure without cleaning agent
- Turn the valve anticlockwise to the stop, the unit operates with low pressure, the cleaning agent is sucked up (dosing on the high pressure cleaner)

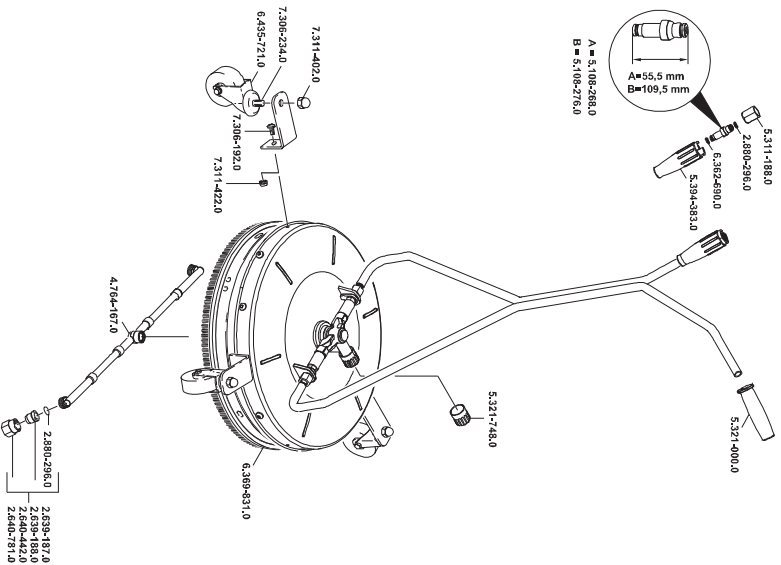
With heated high pressure cleaner

- Turn the valve clockwise to the stop The cleaning agent dosing is set on the high pressure cleaner

Care

- Protect from frost
- Oil the steering rollers regularly
- Do not bend the brushes when storing

KÄRCHER FR 50



03/04
5.3961-305.0