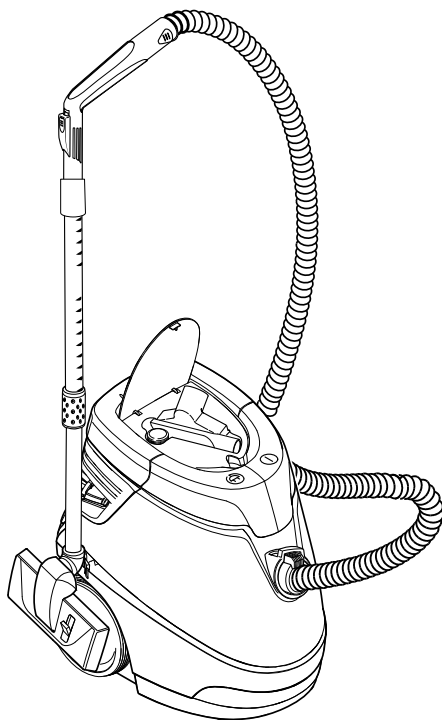


DS 5.600

 **KÄRCHER**[®]



English 5

Français . . . 11

Español . . . 17

CONSUMO DE ENERGIA

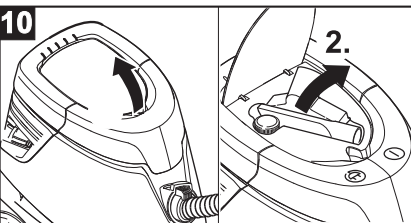
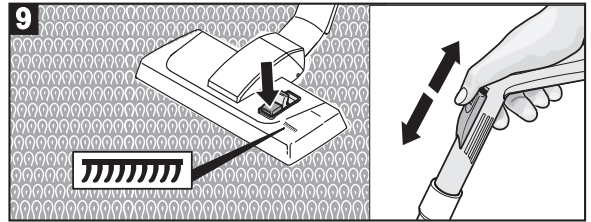
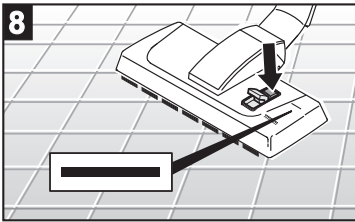
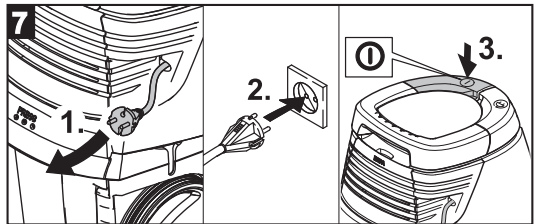
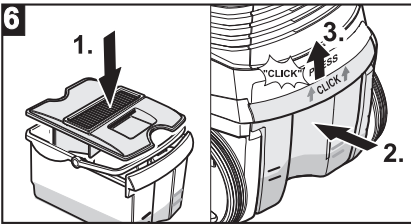
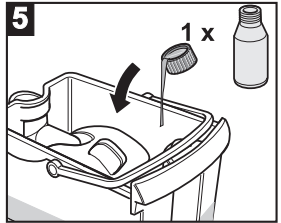
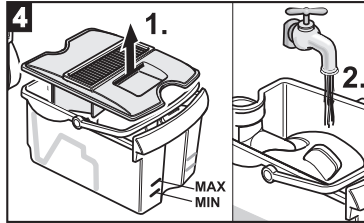
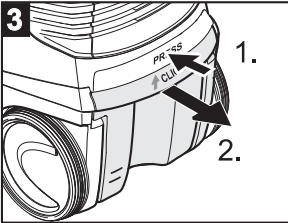
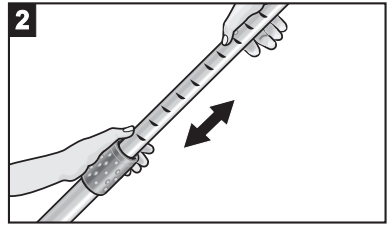
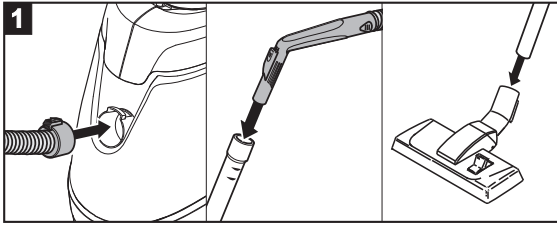
1. En Operación: 287,82 Wh

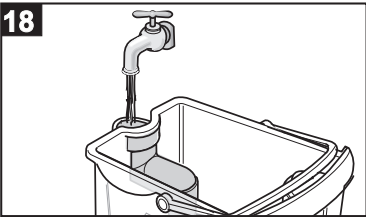
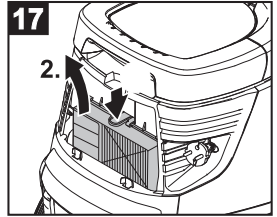
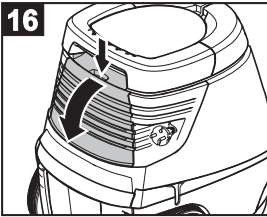
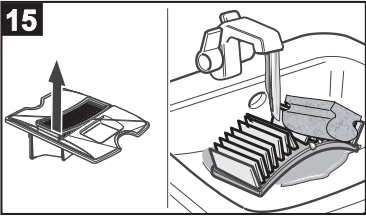
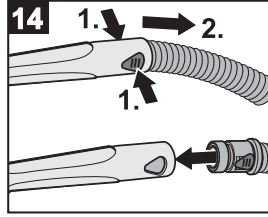
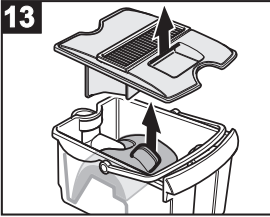
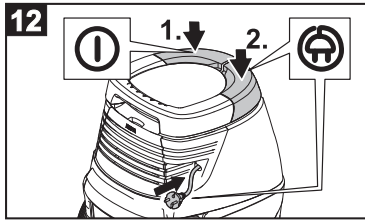
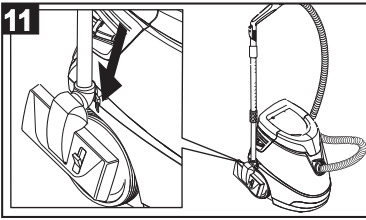
2. En Modo de Espera: N/A

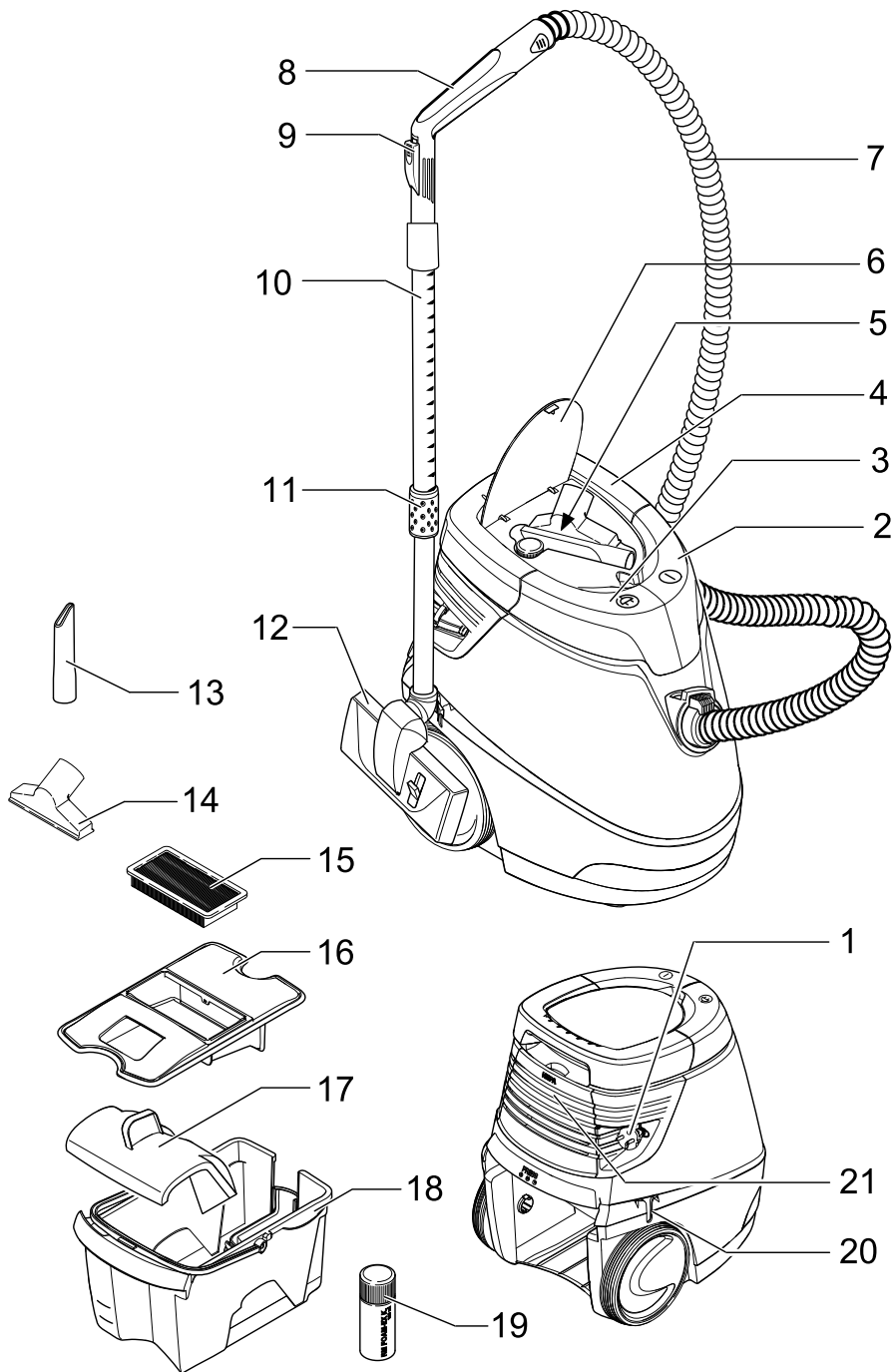
Modelo: DS 5.600



59634180 (04/12)







Dear Customer,



Please read and comply with these instructions prior to the initial operation of your appliance. Retain these operating instructions for future reference or for subsequent possessors.

Contents

Illustration of appliance / scope of delivery	4
Description of the Appliance	6
Safety instructions	6
Commissioning/ Operations	7
Connect accessories	7
Fill the water filter reservoir	7
Start working	7
Working with the floor nozzle	7
Wet vacuum cleaning	8
Working with the crevice nozzle and the upholstery nozzle	8
Park position	8
Finish operation	8
Transport, storage	8
Maintenance and Care	8
Cleaning the appliance and accessories	8
Cleaning/replacing the intermediate filter	8
Replacing the HEPA-Plus filter	9
Cleaning the suction channel in the water filter reservoir	9
Technical specifications	9
Troubleshooting	10
General notes	10

Proper use

The appliance is intended for use as a dry vacuum cleaner corresponding to the descriptions given in these operating instructions and the safety notes.

As an option, small volumes of liquid can be vacuumed.

- Use this appliance only with a filled water filter container.
- Use this appliance only for personal use; use only the accessories and spare parts approved by KÄRCHER for such use.

Description and effectiveness

This vacuum cleaner is equipped with a water filtering system that picks up even the smallest particles. The additional HEPA-Plus high performance filter is a trap for all allergens. The exhaust air is cleaned to 99.99% of all particles larger than 0.3 µm and thus cleaner than the ambient air.

Performance of the water filter vacuum cleaner from Kärcher

Water filter	Intermediate filter	HEPA filter
Particles entering the lungs	98 %	99.99 %
Fine dust	98 %	99.99 %
Dust mite secretions	98 %	99.99 %
Bacteria	98 %	99.99 %
Dust	98 %	99.99 %
Spores	98 %	99.99 %
Pollen	98 %	99.99 %
Coarse dirt (animal hair, fluff, crumbs ...)	98 %	99.99 %

Retention rate of all particles over 0.3 mm 98 % 99 % 99.99 %

Environmental protection



The packaging material can be recycled. Please do not place the packaging into the ordinary refuse for disposal, but arrange for the proper recycling.



Old appliances contain valuable materials that can be recycled. Please arrange for the proper recycling of old appliances. Please dispose your old appliances using appropriate collection systems.

Notes about the ingredients (REACH)

You will find current information about the ingredients at:

<http://www.karcher.de/de/unternehmen/umweltschutz/REACH.htm>

Disposing of the filter and contaminated water

The filters are made from environment-friendly materials. They can therefore be disposed off through the normal household garbage provided you have not sucked in substances that are not permitted to be thrown into household garbage.

The wastewater can be discharged via the drain as long as it does not contain illegal substances.

Description of the Appliance

Scope of delivery

Check the contents of the packaging for completeness and damages when unpacking. If you detect any damages please contact your dealer.

Note: The front cover pages include pictures of the appliance and its operation. Please unfold these first.



- 1 Power cord with plug
- 2 ON/OFF switch for appliance
- 3 Push button take-up cable
- 4 Carrying handle
- 5 Accessory mount
- 6 Lid for accessories storage
- 7 Suction hose
- 8 Handle
- 9 Surrounding air separator
- 10 Telescopic suction pipe
- 11 Release to adjust the telescoping vacuum pipe
- 12 Floor nozzle, reversible
- 13 Crevice nozzle
- 14 Upholstery nozzle
- 15 Intermediate filter
- 16 Lid of the water filter container
- 17 Baffle plate
- 18 Water filter container
- 19 Defoamer liquid (FoamStop)
- 20 Pickup for floor nozzle
- 21 HEPA-Plus filter
Consisting of:
HEPA filter and exhaust filter

Safety instructions

- This device is not intended for use by persons (including children) with reduced physical, sensory or mental abilities or lacking experience and/or knowledge, unless they are supervised by a person responsible for their safety or are instructed by these persons on the use of the device. Children should be supervised, to ensure that they do not play with the device.
- Switch the appliance off after every use and prior to every cleaning/maintenance procedure.

⚠ Electrical connection

The appliance may only be connected to alternating current. The voltage must correspond with the type plate on the appliance.

⚠ Risk of electric shock

Never touch the mains plug and the socket with wet hands.

Do not pull the plug from the socket by pulling on the connecting cable.

Check the power cord with mains plug for damage before every use. If the power cord is damaged, please arrange immediately for the exchange by an authorized customer service or a skilled electrician.

To avoid accidents due to electrical faults we recommend the use of sockets with a line-side current-limiting circuit breaker (max. 30 mA nominal tripping current).

⚠ Caution

Certain materials may produce explosive vapours or mixtures when agitated by the suction air!

Never vacuum up the following materials:

- Explosive or combustible gases, liquids and dust particles (reactive dust particles)
- Reactive metal dust particles (such as aluminium, magnesium, zinc) in combination with highly alkaline or acidic detergents
- Undiluted, strong acids and alkalis
- Organic solvents (such as petrol, paint thinners, acetone, heating oil).

In addition, these substances may cause the appliance materials to corrode.

Commissioning/ Operations

Connect accessories

Illustration 1

- Connect connection hose.
- Connect the telescoping vacuum pipe to the suction hose and attach the floor nozzle.

Note: Adjust the telescoping pipe matching your height so that you will be able to work comfortably while walking upright.

Illustration 2

- Activate the release and extend or retract the interior pipe to the desired length.

Fill the water filter reservoir

⚠ Caution

Do not use the device if the water filter container is empty!
When the appliance is delivered, the intermediate filter and the baffle plate are already installed. When filling make sure that the components have been installed properly (see: SCOPE OF DELIVERY). This could be the cause of poor vacuuming performance or untimely failure of the intermediate filter (see: FINISH OPERATION).

Illustration 3

- Press the release button and pull out the water filter reservoir.

Illustration 4

- Remove the lid from the water filter reservoir and fill the water filter reservoir with tap water until the level settles between the MIN and MAX markings (approx. 2 l)!

Illustration 5

- Add one cap full of the defoaming liquid (FoamStop) to the water filter reservoir.
Note: The functioning of the vacuum cleaner is based on the whirling of the suction air in the water filter. In the process, sucked-in materials and deposits of cleaning agents from floors get collected in the water bath. This can sometimes lead to the formation of foam. It is necessary to add a capful of the foam stop liquid to the water filter bath to avoid this situation. The foam stop liquid is environment-friendly and fully bio-degradable. Slight

foam formation is normal and does not hamper the functioning of the machine.

Illustration 6

- Replace the lid. Slide the water filter reservoir all the way back into the appliance and pull it up until it locks.

Note: Please refill water as soon as the water level in the reservoir sinks below the MIN mark.

Start working

Illustration 7

- Pull the power cable all the way out of the appliance and connect the plug to the power socket.
- To switch on the appliance press the on/off switch.

⚠ Caution

Do not vacuum up large amounts of powdery materials such as cocoa, flour, laundry detergent, pudding powder or similar materials!

Working with the floor nozzle

Vacuuming hard surfaces

Illustration 8

- Use your foot to press the reversing switch of the floor nozzle. The brush strips at the bottom of the floor nozzle are extended.

Vacuuming carpeted floors

Illustration 9

- Use your foot to press the reversing switch of the floor nozzle. The brush strips at the bottom of the floor nozzle are retracted.

Note: If the suction power of the appliance is constantly set too high, the suction nozzles can vacuum with much greater force on carpets, upholstery and curtains. In this case use the surrounding air separator to reduce the suction power. Close it again after use.

Wet vacuum cleaning

⚠ **Caution**

The floor nozzle and the suction pipe may not be used for wet vacuuming, rust hazard!

- Moist dirt or small amounts of liquids up to about 0.5 l may be vacuumed. For this, use the handle without the suction pipe and floor nozzle, or the crevice nozzle.

Working with the crevice nozzle and the upholstery nozzle

Note: The crevice and upholstery nozzles are stored in the appliance.

Illustration 10

- To work, open the lid and remove the desired nozzle.

Crevice nozzle

for edges, joints, heaters and hard to reach locations.

Upholstery nozzle

for cleaning upholstered furniture, laced curtains, mattresses, etc.

Park position

- Switch off the appliance; press the on/off foot switch to do so.

Illustration 11

- Insert the floor nozzle into the pickup on the appliance when taking a break.

Finish operation

Illustration 12

- Turn off the appliance and disconnect the mains plug.
- Push the take-up cable button. The cable will pull itself automatically into the appliance.

Cleaning the water filter system

⚠ **Caution**

Clean and dry the water filter reservoir, filter lid and the baffle plate after each use. Make sure that the guides of the baffle plate are also clean.

- Remove the water filter reservoir from the appliance (see: FILLING THE WATER FILTER RESERVOIR).

Illustration 13

- Remove the lid from the reservoir and take out the baffle plate.
- Empty the water filter reservoir via the round part.
- Clean and dry the lid and the water filter reservoir.
Important: All parts of the water filter system, especially the intermediate filter, must be dried thoroughly prior to storage!

Transport, storage

- Hold the appliance at the carrying handle when you want to transport it and store it in dry rooms.
- In order to ventilate the water filter reservoir during the storage time, do not slide it all the way into the appliance.

Maintenance and Care

⚠ **Caution**

Turn off the appliance and remove the mains plug prior to any care and maintenance work.

Cleaning the appliance and accessories

⚠ **Caution**

Do not use abrasives, glass or universal cleaners! Never immerse the appliance in water.

- Clean the appliance and accessory parts made of plastic with a commercial plastic cleaner.

Illustration 14

- Suction hose and handle can be disassembled for cleaning.
- Check the accessories for obstructions and clean if necessary. Do not use water to clean the floor nozzle.

Cleaning/replacing the intermediate filter

Note: Clean the intermediate filter every 8 weeks for normal use, if the suction performance is deteriorating, the filter can be cleaned sooner.

Use a commercially available soft household sponge to clean the filter to avoid damaging the coated fins.

Illustration 15

- The individual fins of the intermediate filter can be cleaned under running water using the sponge.
- With normal use, replace the intermediate filter at least every 12 months, if necessary, it can be replaced sooner.

Note: The intermediate filter must be disposed off as residual waste.

Replacing the HEPA-Plus filter

Note: The HEPA-Plus filter consists of the HEPA filter and an exhaust filter. In order to ensure an optimised cleaning performance and function of the appliance, this filter must be changed at least every 18 months. Replace sooner if damaged or extremely dirty.

⚠ **Caution**

Do not rinse the HEPA-Plus filter!

Illustration 16

- Remove the cover.

Illustration 17

- Remove the HEPA-Plus filter.
- Insert a new HEPA-Plus filter until you can hear the "click".
- Replace the lid so that you can hear the "click".

Cleaning the suction channel in the water filter reservoir

Illustration 18

- Remove deposits in the suction channel by rinsing from above with a stream of water.

Technical specifications

Nominal voltage 1~60 Hz	120 - 127	V
Output P _{nom}	1100	W
Output P _{max}	1300	W
Fill capacity of the water filter reservoir	2	l
Sound	72	dB(A)
Weight (without accessories)	8,5	kg
Nominal width, accessories	35	mm
HEPA-Plus filter H 12 class as per EN 1822		

Subject to technical modifications!

Troubleshooting

You can rectify minor faults yourself with the help of the following overview.

If in doubt, please consult the authorized customer service.

Danger

Turn off the appliance and remove the mains plug prior to any care and maintenance work. Repair works may only be performed by the authorized customer service.

Appliance does not vacuum

Power supply is interrupted

- ➔ Remove the mains plug, check the connecting cable and the mains plug for damage.

Weak/diminishing suction power

Forgot the baffle plate or not inserted correctly

- ➔ Reinsert the baffle plate correctly. (see: SCOPE OF DELIVERY)

Intermediate filter is wet

- ➔ Let the intermediate filter dry or install new dry filter. (see: CARE, MAINTENANCE)

Strong foam generation in the water filter reservoir

- ➔ Replace the water and add 1 to 2 capfuls of FoamStop. Check the intermediate filter for moisture. Wash the wet filter and let it dry or install a new filter.

Too little or too much water in the water filter reservoir

- ➔ Check the MIN / MAX marks on the reservoir.

Intermediate filter missing or not inserted correctly

- ➔ Check.

HEPA-Plus filter is dirty

- ➔ Replace the HEPA-Plus filter. (see: CARE, MAINTENANCE)

Intermediate filter is dirty

- ➔ Wash the filter, install new intermediate filter if required. (see: CARE, MAINTENANCE)

Accessory is blocked

- ➔ Remove the blockage.

Suction channel has deposits

- ➔ Remove the deposits. (see: CARE, MAINTENANCE)

Water filter reservoir has not locked in properly

- ➔ Check. (see: FILLING THE WATER FILTER RESERVOIR)

Surrounding air separator at the handle is open

- ➔ Close surrounding air separator. (see: WORKING WITH THE FLOOR NOZZLE)

General notes

Warranty

The terms of the guarantee applicable in each country have been published by our respective national distributors. We will repair possible faults on your unit free of charge within the warranty period, insofar as the faults are caused by material defects or defective workmanship. Guarantee claims should be addressed to your dealer or the nearest authorized customer service centre, and supported by documentary evidence of purchase. (See address on the reverse)

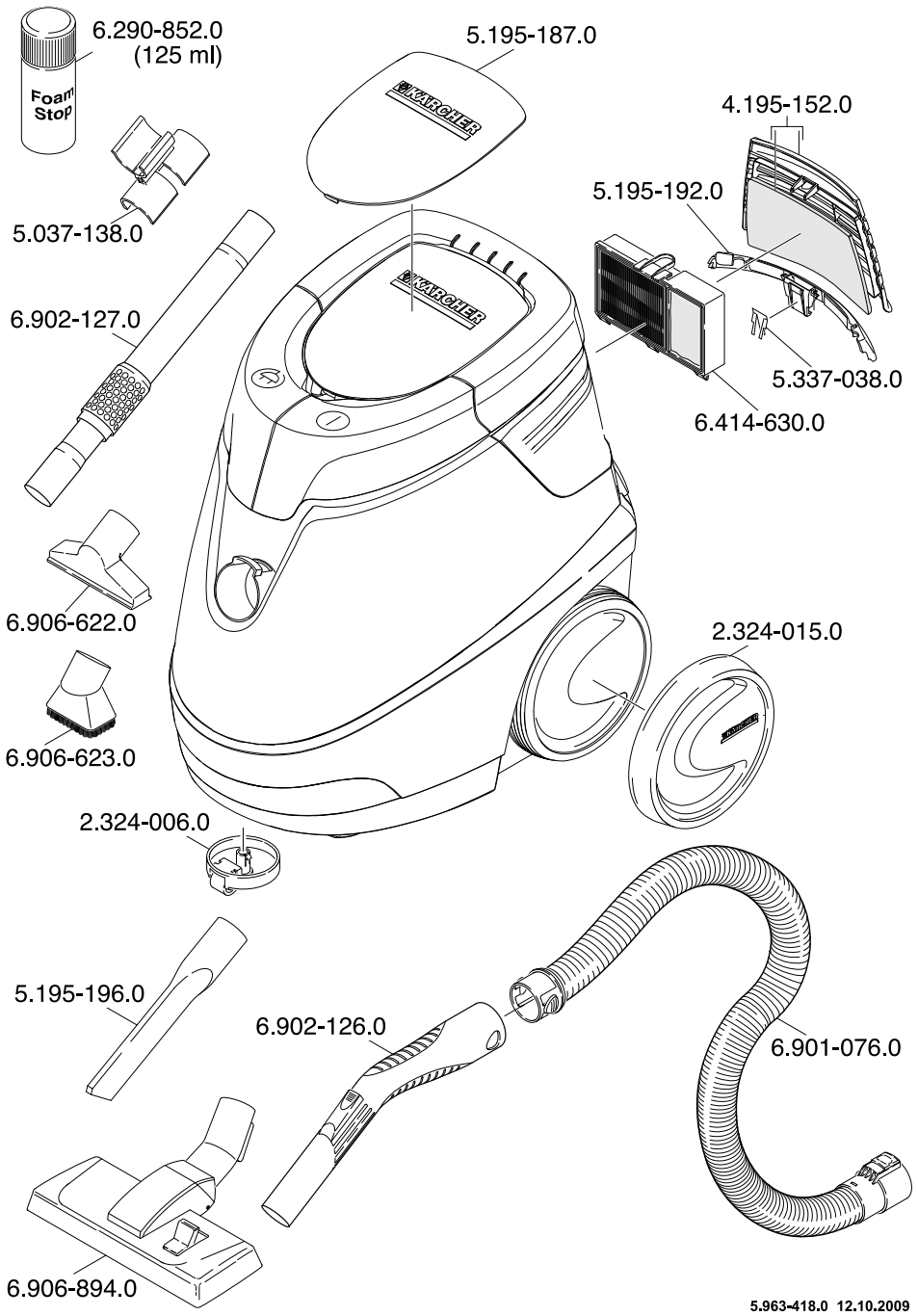
Customer Service

Our KÄRCHER branch will be pleased to help you further in the case of questions or faults. (See address on the reverse)


Ordering spare parts and special attachments

At the end of the operating instructions you will find a selected list of spare parts that are often required.

You can procure the spare parts and the attachments from your dealer or your KÄRCHER branch office. (See address on the reverse)



Karcher México, SA de CV
Av. Gustavo Baz sur No. 29 C
Col. Naucalpan Centro
C.P. 53000 Municipio de Naucalpan

 **01-800-024-13-13**
www.karcher.com.mx