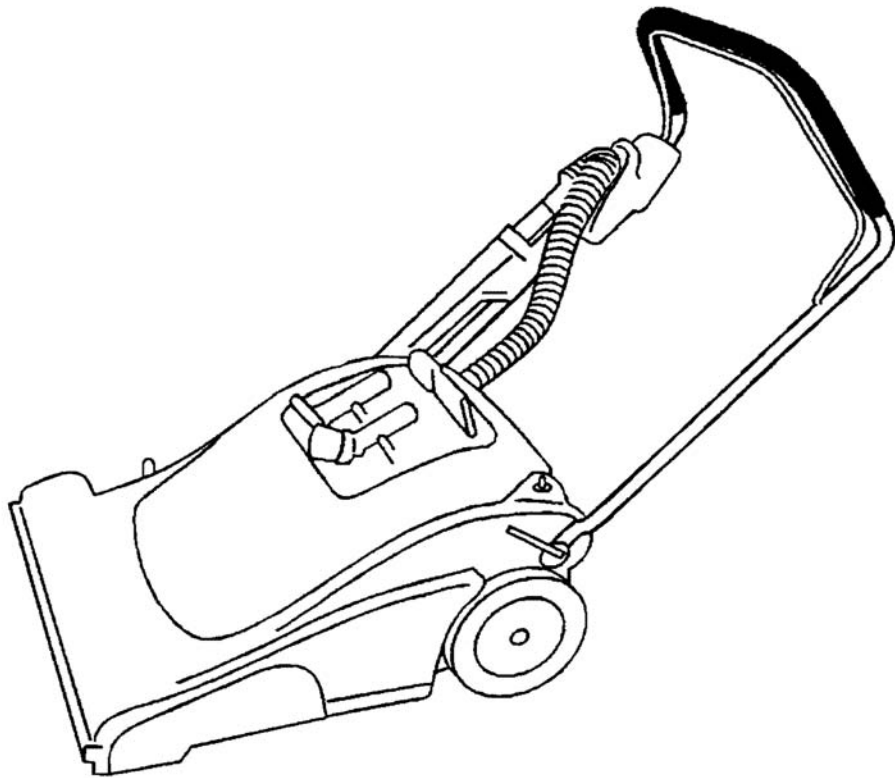




KÄRCHER

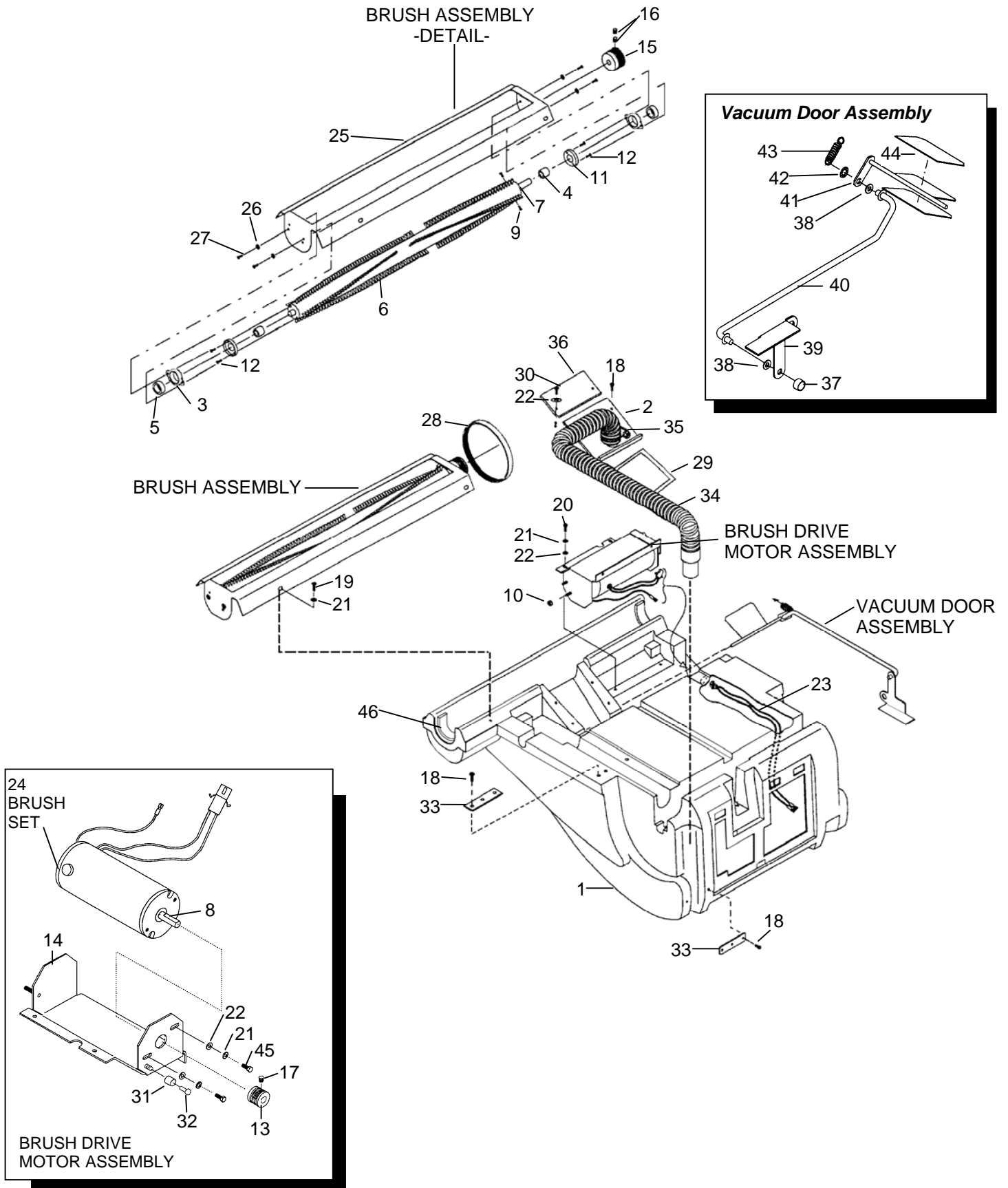
Model: CV71/2
1.012-548.0



Operating Instructions (ENG)



BRUSH AND DRIVE GROUP



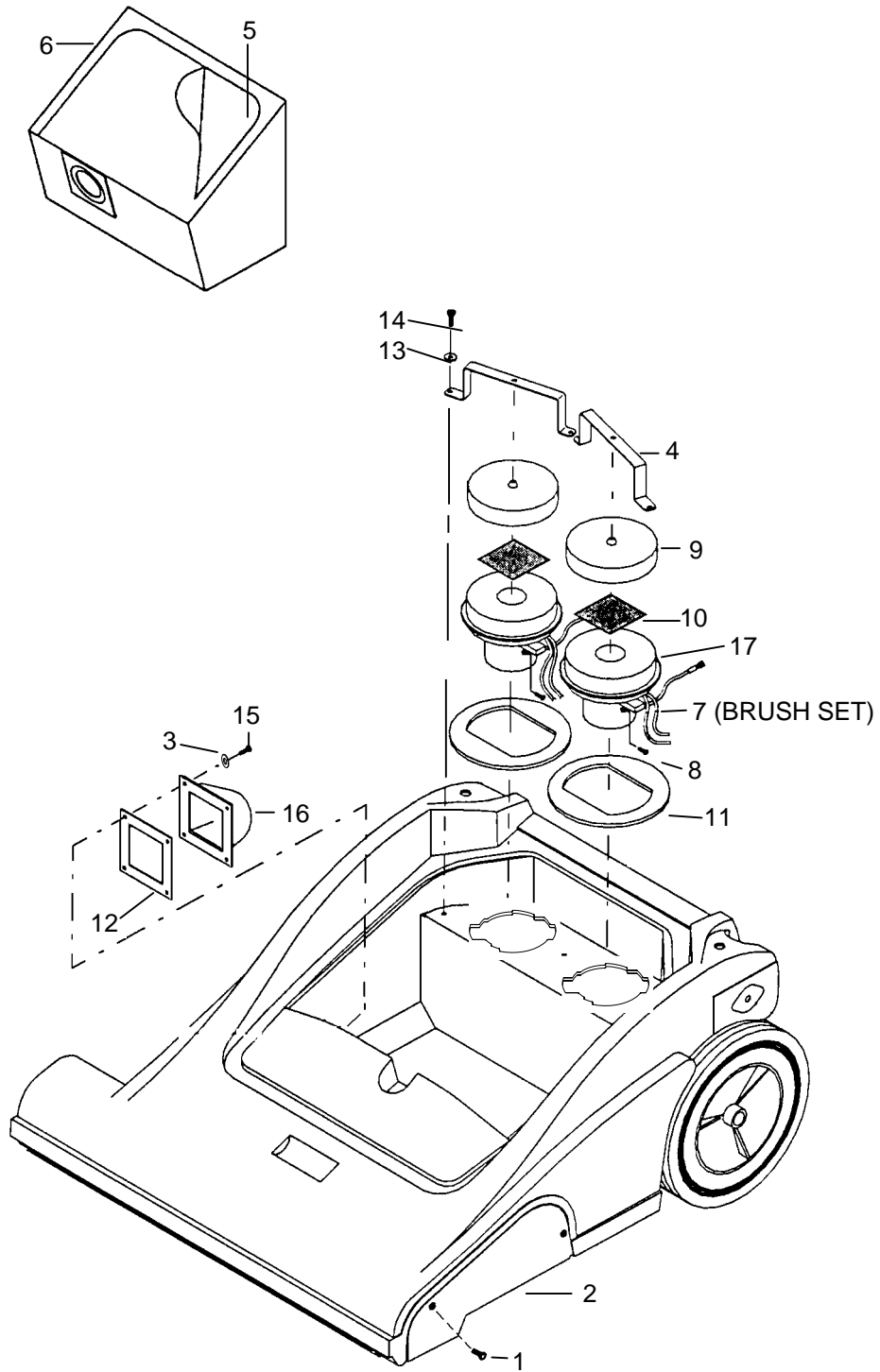
BRUSH AND DRIVE GROUP PARTS LIST

REF	PART NO.	PRV NO.	QTY	DESCRIPTION	SERIAL NO. FROM	NOTES:
1	86309490	-	1	BODY, CV 71/2		
2	86011010	89199	1	WELDMENT, HOSE CONNECT		
3	86229050	14342	2	BEARING BLOCK		
4	86008210	73998	2	SPACER, .75OD X .5ID X .5L		
5	86000900	09019	2	BEARING, 1.125OD X .50ID X .375		
6	86001130	12039	1	BRUSH		
7	86000740	03112	1	AXLE, .5OD X 29.94L		
8	86026100	53623	1	MOTOR ASM, BRUSH DRIVE		
9	86006510	70043	2	SCR, 10-32 X 5/8 PFHMS		
10	86005710	57105	1	NUT, 1/4-20 HEX W/ STAR WASHER		
11	86004080	36197	2	GUARD, THREAD		
12	86007060	70710	4	SCR, 8-18 X 1/2 PFHST H-L		
13	86250420	64022	1	PULLEY, POLY V-BELT MOTOR		
14	86081840	62841	1	PLATE, MOTOR MOUNTING		
15	86006040	64104	1	PULLEY, BRUSH		
16	86277930	70119	2	SET SCR, 1/4-20 X 3/8		
17	86006550	70074	2	SET SCR, 10-32 X 1/4 KCP		
18	86006600	70114	6	SCR, #10 X 3/4 POLYFAST		
19	86276700	70716	5	SCR, 1/4-20 X 1/2 PPHMS PLTD		
20	86275570	70505	4	SCR, 1/4-20 X 1.0 HHCS PLTD.		
21	86010660	87025	11	WASHER, 1/4 LCK EXT STAR SS		
22	86010740	87090	8	WASHER, 1/4ID X 3/4OD		
23	86010840	880118	1	WIRE ASM, BRUSH MOTOR		
24	86135360	14340	1	BRUSH SET, BRUSH MTR		
25	86087030	73992	1	SHOE, VAC		
26	86010640	87016	4	WASHER, #10 LOCK EXT STAR SS		
27	86000680	70361	4	SCR, 10-32 X 1/2 PHTR PLTD		
28	86001090	11041	1	BELT, 220 J-6 POLY-V		
29	86198530	99809	3.42'	FOAM TAPE, 1/8T X 3/4 1SDA		
30	86276040	70586	2	SCR, 1/4-20 X 3/4 BLK PPHTC		
31	86008200	73996	1	SPACER, .50OD X .37ID X .44L SS		
32	86005860	57273	1	NUT, 1/4-20 X 12MM HEX BARREL		
33	86080950	62650	2	PLATE, VAC HOSE RETAINER		
34	86004270	39480	1	HOSE ASM, 1.5 X 30.0 BLK VAC		
35	86002380	20046	1	CLAMP, 2.25" WORM GEAR		
36	86006300	66329	1	PLATE, ACCESS		
37	86002810	27063	1	COLLAR, 3/8 SHAFT		
38	86010680	87030	2	WASHER, 3/8ID X 3/4OD X 1.25		
39	86006280	66281	1	PEDAL, WAND ACTIVATOR		
40	86005060	51277	1	LINKAGE, WAND ACTIVATOR		
41	86003380	29202	1	DOOR, FLAPPER		
42	86270910	57042	1	NUT, 3/8 PUSHLOCK		
43	86007690	73240	1	SPRING, EXT. 0.5OD X 2.25L X .063W		
44	86305040	-	-	GASKET, FLAPPER		
45	86274750	70270	2	SCR, 1/4-20 X 3/4 HHCS		
46	86133710	99862	6"	TAPE, 5/8W X 1/4T PORON 4701-01		

BRUSH HEIGHT AND WHEEL GROUP PARTS LIST

REF	PART NO.	PRV NO.	QTY	DESCRIPTION	SERIAL NO. FROM	NOTES:
1	86005860	57273	1	NUT, 1/4-20 X 12MM HEX BARREL		
2	86008200	73996	1	SPACER, .50OD X .37ID X .44L SS		
3	86006660	70190	1	SCR, 1/4-20 X 1/2 BHCS DL		
4	86008750	80673	1	KNOB, WITH 1/2-13 F-INSERT		
5	86001170	140054	1	BUSHING, BRZ 3/8-16 X .74 X .50		
6	86279290	89131	1	WELDMENT, FRAME		
7	86001220	140177	1	BRACKET, AXLE HANGER		
8	86091480	14351	1	BAR, HEIGHT ADJUSTMENT		
9	86092030	14353	1	BRKT, HEIGHT ADJ RIGHT		
10	86010910	89094	2	WHEEL, 1-5/8D CUSHION		
11	86259960	89506	2	WHEEL, 1 15/16" x 10" HOOSIER		
12	86010790	87163	1	WASHER, 3/8 SPLIT LOCK PLTD.		
13	86001660	41236	2	HUBCAP, 5/8" SHAFT		
14	86270880	57032	2	NUT, 3/8-16 SERRATED FLG.		
15	86005680	57047	4	NUT, 1/4-20 NYLOCK PLTD.		
16	86080800	62623	1	PLATE, AXLE MOUNTING		
17	86279420	87156	2	WASHER, .75ID X 1.25OD X .125		
18	86000390	67376	1	ROD, .625 X 25.30 CRS		
19	86010740	87090	8	WASHER, 1/4ID X 3/4OD		
20	86010730	87088	3	WASHER, 3/4ID X 1.00 PLTD.		
21	86010660	87025	4	WASHER, 1/4 LOCK EXT. STAR SS		
22	86007740	73362	1	SPRING, EXT .50D X 1.75L X .06W		
23	86006920	70507	1	SCR, 3/8-16 X 3/4 HHCS GR5 PLTD.		
24	86275570	70505	8	SCR, 1/4-20 X 1.0 HHCS PLTD.		

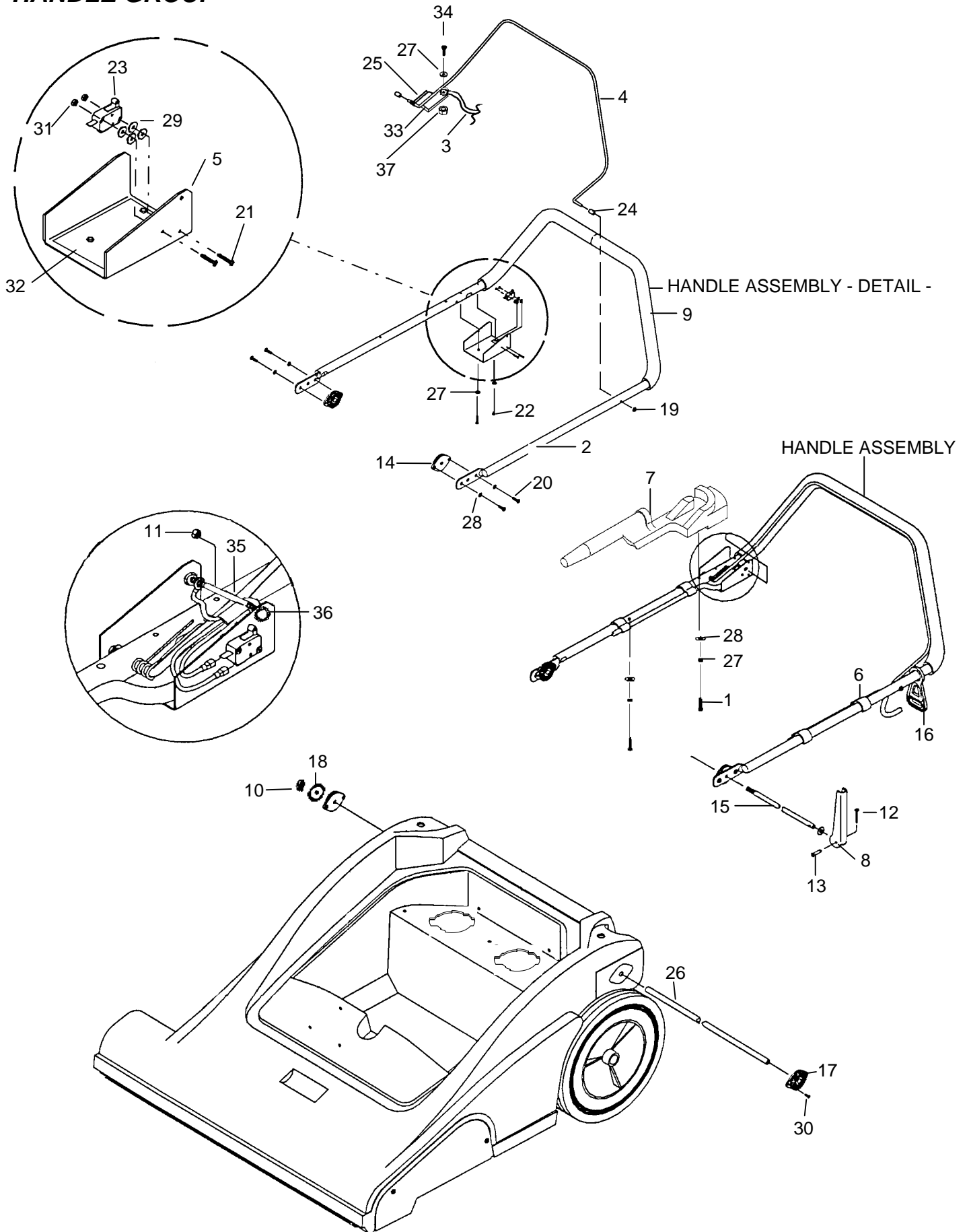
VACUUM GROUP



VACUUM GROUP PARTS LIST

REF	PART NO.	PRV NO.	QTY	DESCRIPTION	SERIAL NO. FROM	NOTES:
1	86276040	70586	5	SCR, 1/4-20 X 3/4 BLK PPHTC		
2	86064180	36185	1	GUARD, BELT		
3	86010650	87018	4	WASHER, #10 X 9/16 OD		
4	86068760	140196	2	BRKT, VAC MOTOR MOUNTING		
5	86215090	140949	2	BAG, PAPER WIDE AREA VAC		
6	86001200	140164	1	BAG, CLOTH U19855		
7	86135320	140687	-	BRUSH SET, 120V VAC WINDSOR		
8	86006770	70323	2	SCR, 10-32 X 1/4 PHTR PLTD.		
9	86003510	34012	2	FILTER, VAC MOTOR		
10	86086800	73461	2	SCREEN, 5/32 .032T 20GA AL 3X3		
11	86237580	35204	2	GASKET, 4.0ID X 5.5OD X .38THK PRN		
12	86006820	35200	1	GASKET, FILTER BAG NECK		
13	86010660	87025	2	WASHER, 1/4 LOCK EXT STAR SS		
14	86275570	70505	2	SCR, 1/4-20 X 1.0 HHCS PLTD.		
15	86006600	70114	4	SCR, #10 X 3/4 POLYFAST		
16	86309510	-	1	DEBRIS CHUTE, CV 71/2		
17	86026850	53783	2	VAC MOTOR, 120V 5.7 1ST		

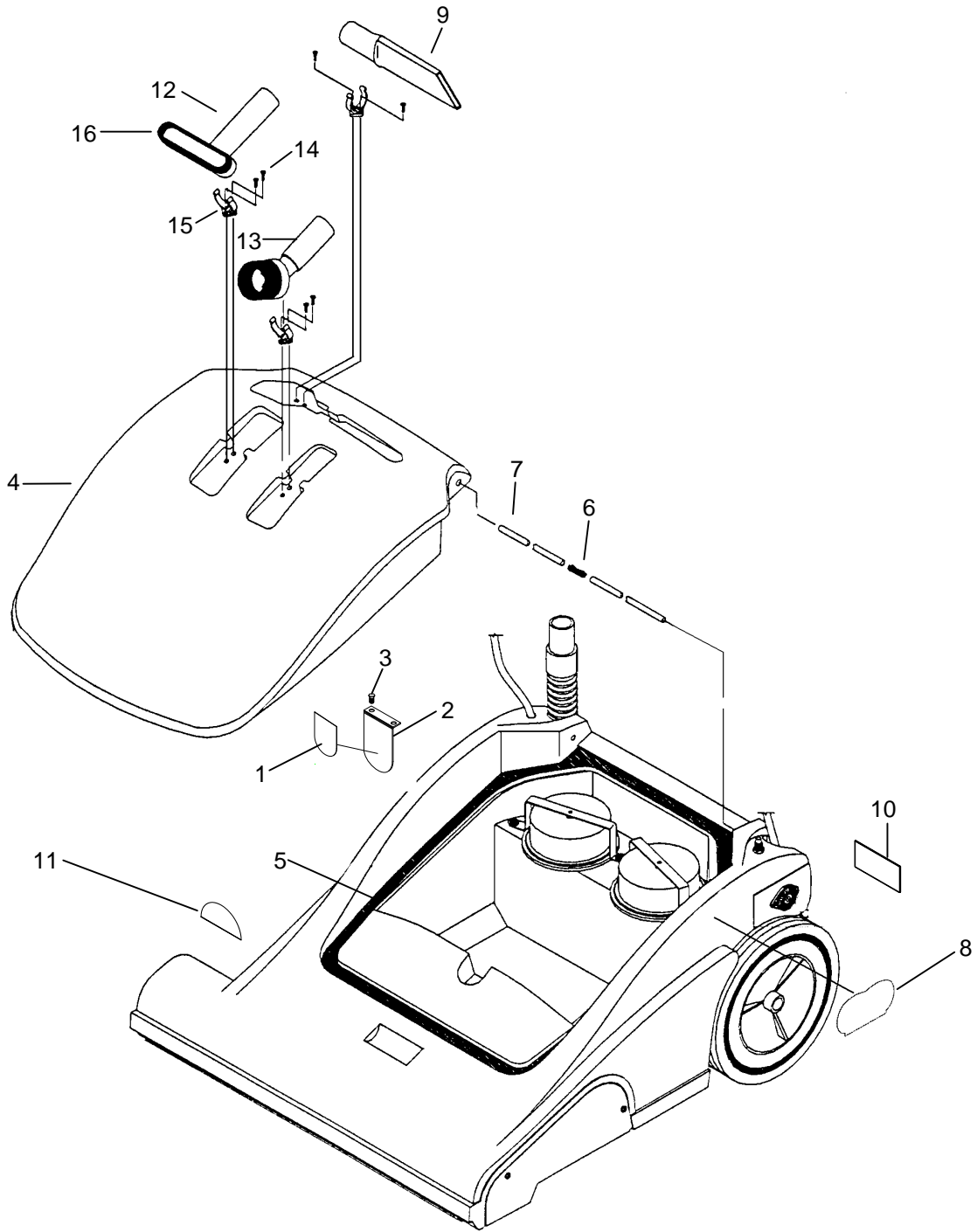
HANDLE GROUP



HANDLE GROUP PARTS LIST

REF	PART NO.	PRV NO.	QTY	DESCRIPTION	SERIAL NO. FROM	NOTES:
1	86274640	70253	1	SCR, 10-32 X 1.25 PPHMS		
2	86076510	38272	1	HANDLE, MAIN		
3	86268300	88231	1	WIRE, 6" GRN/18 76008 X 76011		
4	86091470	140309	1	BAR ASM, BRUSH SWITCH		
5	86069190	140310	1	BRKT, SWITCH MOUNTING		
6	86198480	27371	4	CLIP, POWER CORD		
7	86309530	-	1	HOLSTER, CV 71/2		
8	86246320	51142	1	LEVER, HANDLE LOCK		
9	86238290	36104	2	GRIP, HANDLE ADJUSTMENT		
10	86005630	57022	1	NUT, 3/8-16 THIN NYLOCK SS		
11	86005710	57105	1	NUT, 1/4-20 HEX W/ STAR WASHER		
12	86008650	80604	1	RING, RUE COLLAR 1/4 PLTD.		
13	86272300	66133	1	PIN, CLEVIS 3/16 X 7/8L		
14	86005020	51184	2	LOCK, HANDLE ADJUSTMENT		
15	86006380	67374	1	ROD, HANDLE ADJ.		
16	86256170	73169	1	STRAIN RELIEF, CORD HOOK		
17	86005050	51254	2	LOCK, HANDLE		
18	86010710	87080	2	WASHER, .5 X 1.25 FLAT PLTD.		
19	86271240	57154	2	NUT, CAP 1/4 DIA RETAINING PLTD.		
20	86007050	70683	4	SCR, 10-32 X 3/8 PHMS SS DL		
21	86006720	70245	2	SCR, 4-40 X 3/4 PHMS PLTD.		
22	86006800	70361	2	SCR, 10-32 X 1/2 PHTR PLTD.		
23	86007100	72093	1	SWITCH, 125VDC SPST N.O.		
24	86007820	73698	2	SPACER, .50D X .28ID X .38L		
25	86255250	73843	1	SPRING, TORSION		
26	86089370	78365	1	TUBE, HANDLE ADJUSTMENT		
27	86010640	87016	5	WASHER, #10 LOCK EXT. STAR SS		
28	86010650	87018	6	WASHER, #10 X 9/16OD		
29	86010690	87068	4	WASHER, 1/8 RIVET BACKUP		
30	86006510	70043	4	SCR, 10-32 X 5/8 PFHMS SS		
31	86271280	57163	2	NUT, 4-40 W/ STAR WASHER		
32	86249500	62839	1	PLATE, SWITCH BOX INSLTR		
33	86146430	51299	1	LEVER, SPRING STEEL		
34	86006810	70363	1	SCR, 10-32 X 3/8 PHTR PLTD.		
35	86007010	70663	1	SCR, 1/4-20 X 3-1/4 HHCS PLTD.		
36	86010660	87025	1	WASHER, 1/4 LOCK EXT STAR SS		
37	86279220	57104	1	NUT, 10-32 W/ STAR WASHER PLTD		

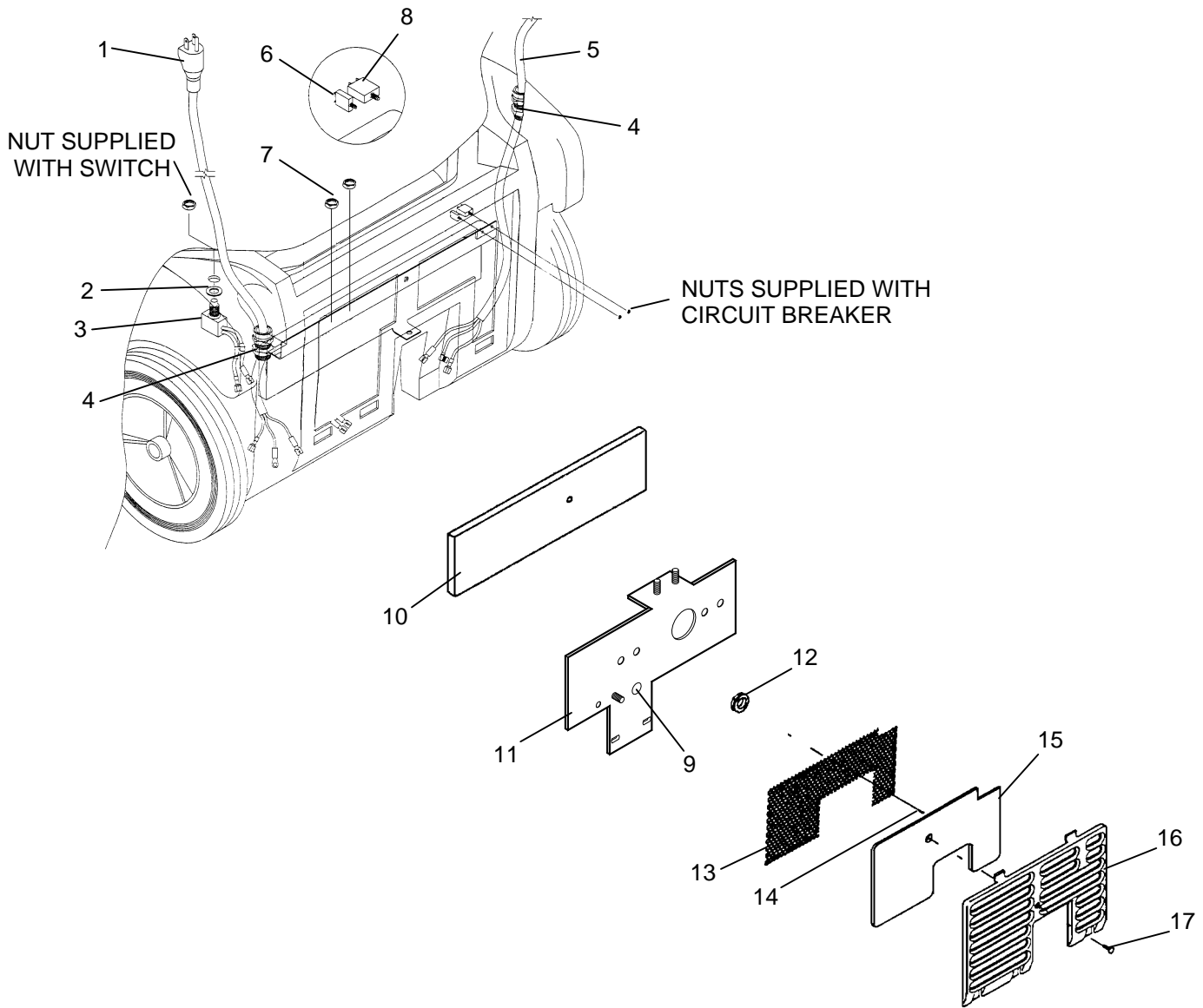
LID/DECAL GROUP



LID/DECAL GROUP PARTS LIST

REF	PART NO.	PRV NO.	QTY	DESCRIPTION	SERIAL NO. FROM	NOTES:
1	86003780	35171	1	GASKET, ACCESSORY PORT		
2	86234760	27674	1	COVER, ACCESSORY PORT		
3	86006500	70024	2	SCR, #8 X 1/2 SHT METAL SS		
4	86309550	-	1	LID, CV 71/2		
5	86237590	35207	2	GASKET, FOAM 1/2 X 10		
6	86255240	73838	1	SPRING, .24OD X 2.0 COMP		
7	86006290	66285	2	PIN, .250 X .75 CRS		
8	86306500	-	2	LABEL, CV 71/1		
9	86000160	02292	1	TOOL, 11" PLASTIC CREVICE		
10	86246560	50776	1	LABEL, WARNING		
11	86245620	50762	1	LABEL, BRUSH HEIGHT ADJ.		
12	86000080	02084	1	TOOL, 5" UPHOLSTERY		
13	86000070	02083	1	BRUSH, 3" DUST		
14	86274520	70233	6	SCR, #10 X 3/8 PH HI-LO PLTD		
15	86002990	27744	3	CLIP, C 1-1/2 PLASTIC		
16	86283600	02085	2	BRUSH, UPHOLSTERY		

ELECTRICAL PANEL AND COVER GROUP



ELECTRICAL PANEL & COVER GROUP PARTS LIST

REF	PART NO.	PRV NO.	QTY	DESCRIPTION	SERIAL NO. FROM	NOTES:
1	86234300	23672	1	CORD ASM, 115V		
2	86279220	87104	1	WASHER, 1/2 EXT. STAR		
3	86261560	880250	1	WIRE ASM, MAIN SWITCH/BREAKER		
4	86005670	57040	2	NUT, 1/2 NPT CONDUIT		
5	86261570	880253	1	WIRE ASM, BRUSH/HANDLE SWITCH		
6	86230120	14313	1	BREAKER, 13A CIRCUIT		
7	86005680	57047	2	NUT, 1/4-20 HEX NYLOCK		
8	86230050	140239	1	BREAKER, 3.0A THERMAL CIR.		
9	86245040	50279	1	LABEL, GROUND SYMBOL		
10	86003550	34310	1	FOAM, SOUND INSULATION		
11	86082750	66323	1	PLATE, ELECTRICAL PANEL		
12	86238400	36125	1	GROMMET, 3/4ID X 1.38OD		
13	86086830	73863	1	SCREEN, EXHAUST		
14	86006500	70024	8	SCR, #8 X 1/2 SHT METAL SS		
15	86236080	34326	1	FILTER, EXHAUST		
16	86063720	27738	1	COVER, REAR		
17	86172770	70610	1	SCR, 1/4-20 X 1.0 BLK THUMB		

SUGGESTED SPARE PARTS

PART NO.	PRV NO.	DESCRIPTION	SERIAL NO. FROM	NOTES:
86001090	11041	BELT, 220 J-6 POLY-V		
86215090	140949	BAGS, PAPER (PKG. OF 10)		
86003510	34012	FILTER, VAC MOTOR		
86236040	34309	FILTER, EXHAUST		
86001200	140164	BAG, CLOTH		
86135260	140211	BRUSH SET, VAC MOTOR		
86135360	14340	BRUSH SET, 53616/53617		