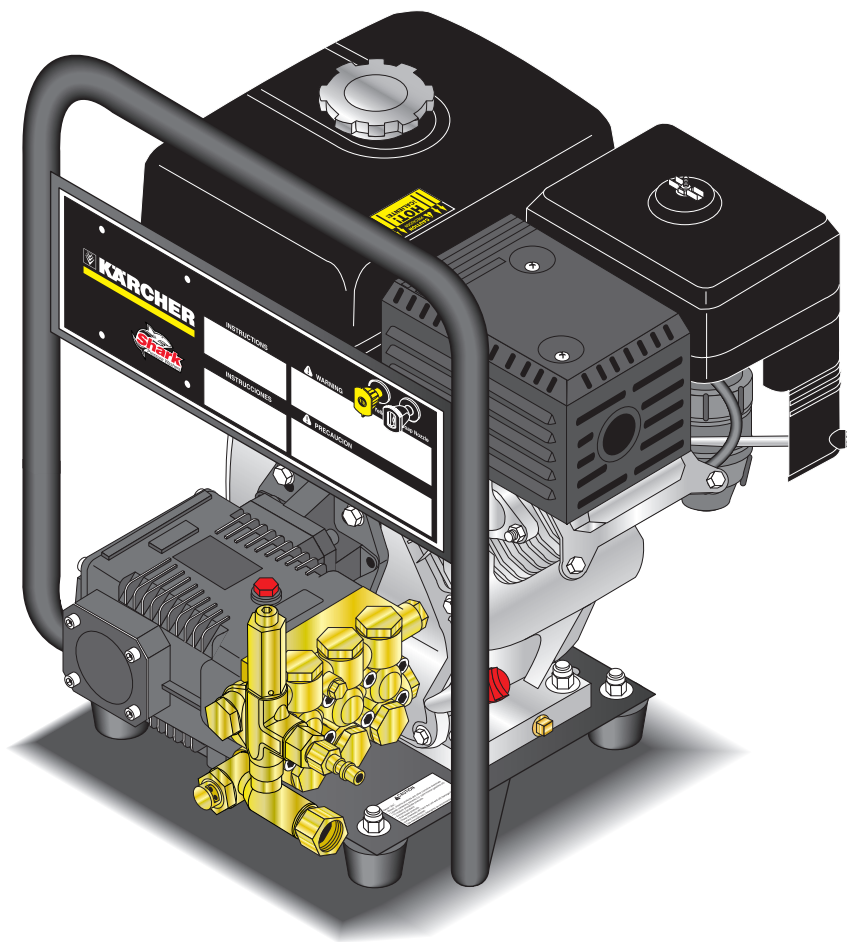




# OPERATOR'S MANUAL



## MODEL

HD 2.3/24 P / CD-232437

HD 2.3/23 P / CD-232336

## ORDER #

1.575-350.0

1.575-351.0

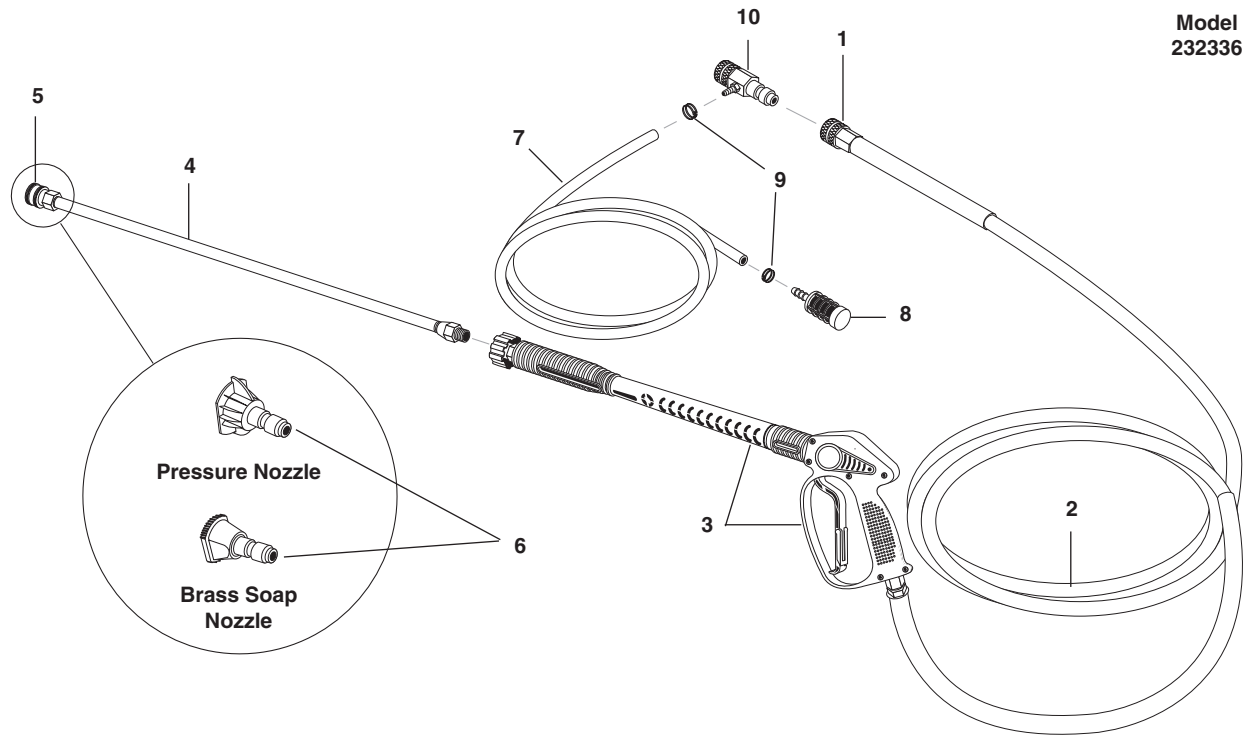
---

To locate your local Kärcher Shark Commercial Pressure Washer Dealer nearest you,  
visit [www.karchercommercial.com](http://www.karchercommercial.com) or [www.karchershark.com](http://www.karchershark.com)

9.800-087.0

# HOSE & SPRAY GUN ASSEMBLY

Model  
232336

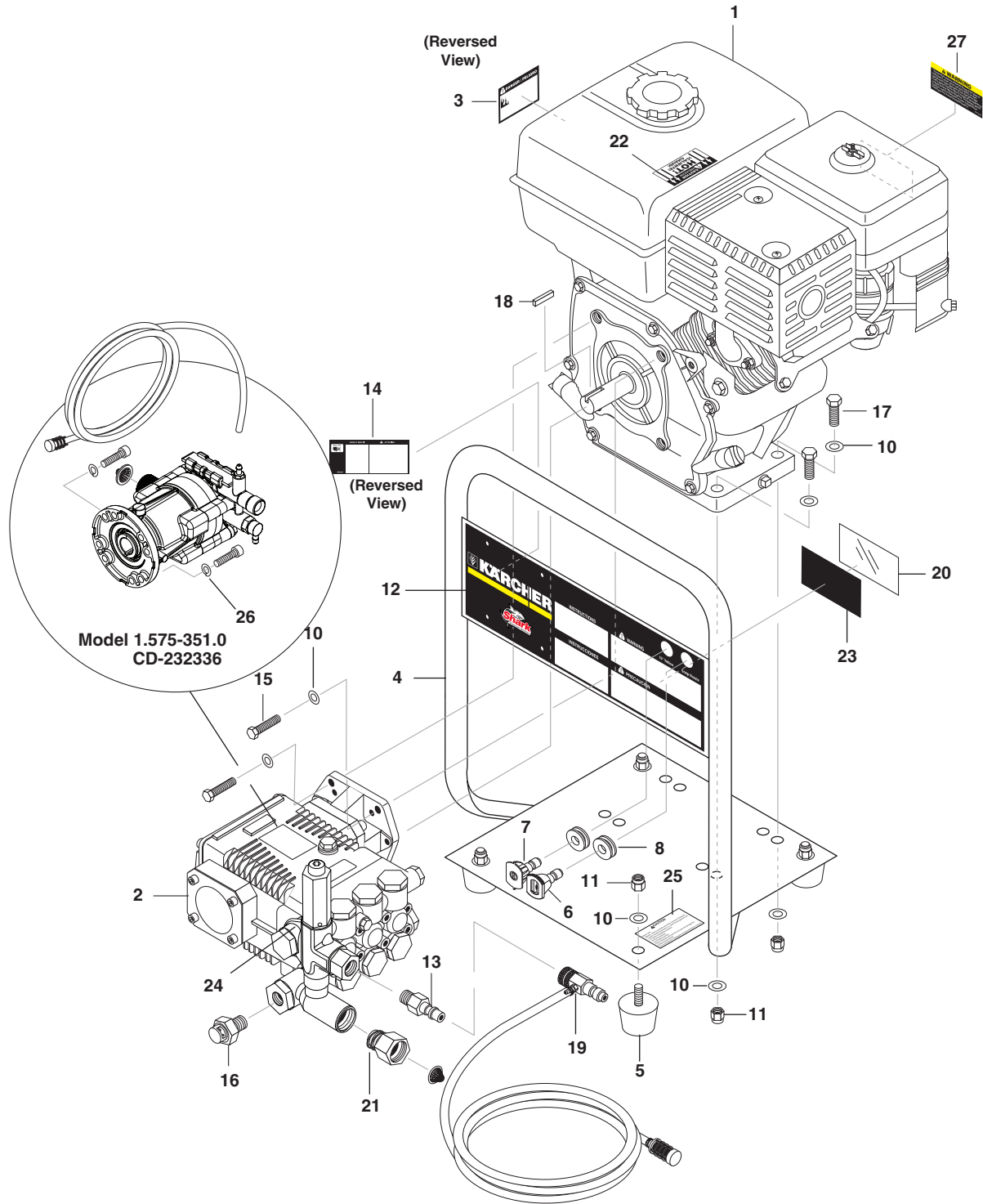


## HOSE & SPRAY GUN ASSEMBLY PARTS LIST

ITEM	PART NO.	DESCRIPTION	QTY
1	9.802-166.0	Coupler, 3/8" Female (3500)	1
	9.802-100.0	▲ Quick Coupler O-Ring	1
	8.707-182.0	Coupler, Twist Connect, M22-F x 3/8" FNPT (3510)	1
2	8.739-124.0	Hose, 3/8" x 30', 1 Wire, Tuff-Flex	1
	8.739-148.0	HOSE, 3/8X50', 1W, TF,LEG, SOXSW, BU(3510)	1
3	9.802-223.0	Spray Gun, Shut-Off	1
4	9.802-220.0	Wand, Straight	1
5	9.802-164.0	Coupler, 1/4" Female	1
	9.802-096.0	Quick Coupler O-Ring	1
6	8.712-333.0	Nozzle, 3.0 15° Yellow (3500)	1
	8.715-398.0	Nozzle, Brass Soap (3500)	1
	9.104-024.0	Nozzle Kit 030 (3510)	1
7	9.802-251.0	Hose, 1/4" x 1/2" Clear Vinyl (3500)	6 ft.
8	8.707-057.0	Strainer, 1/4" Plastic (3500)	1
9	6.390-126.0	Clamp, Hose (3500)	2
10	9.802-216.0	Injector, Chem., Non-Adj, 3-5 GPM, .083 (3500)	1

▲ Not Shown

# EXPLODED VIEW



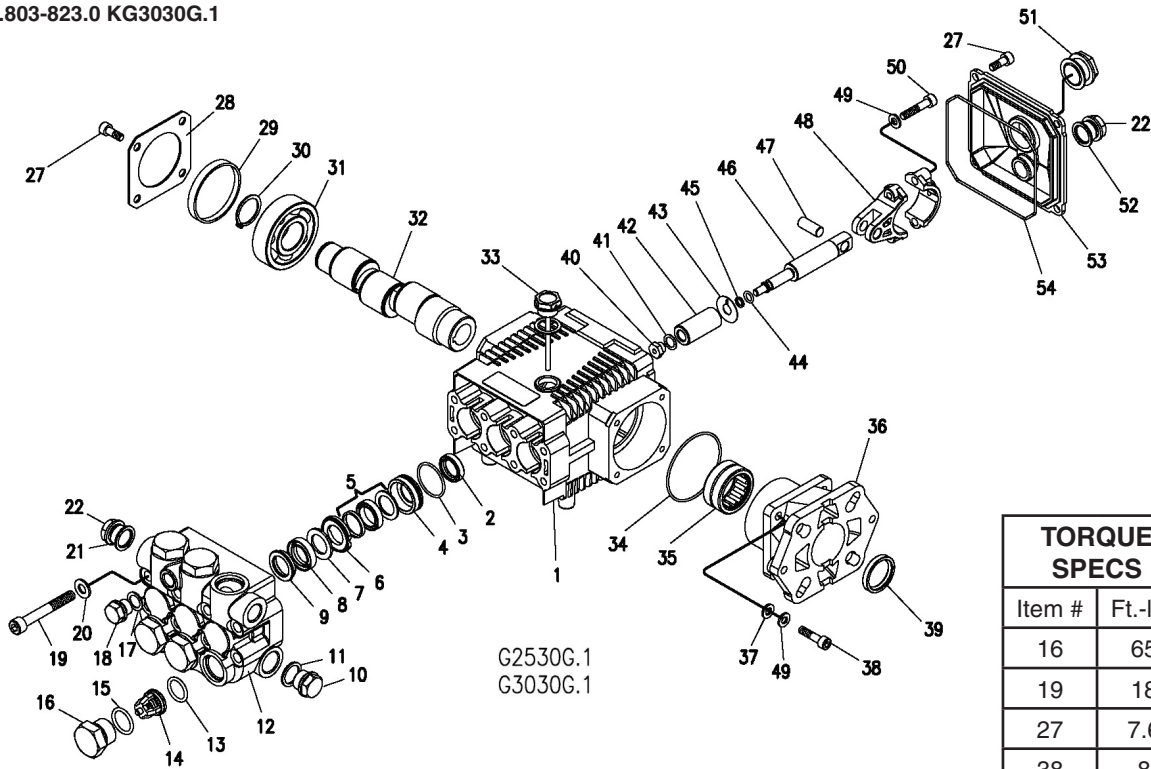
## EXPLODED VIEW PARTS LIST

ITEM	PART NO.	DESCRIPTION	QTY
1	9.802-316.0	Engine, Honda, GX160K1QX2, 5.5 HP (3500)	1
	9.194-015.0	Engine, Honda, GC1601QHA, 5 HP (3510)	1
2	9.804-033.0	Pump, Kärcher KG2530G (3000)	1
	9.120-021.0	Pump (3510)	1
3	9.800-008.0	Label, Danger Cool Engine	1
4	9.802-873.0	Handle Assembly	1
5	9.802-063.0	Mount, Vibration, 5/16"-18 x 9/16" Stud, 30 Duro	4
6	See Page 15 For Nozzle Information		
7	See Page 15 For Nozzle Information		
8	9.802-064.0	Grommet, Rubber, Nozzle Holder	2
9	9.800-017.0	▲ Tag, Pump Plug/Dipstick (3500)	1
	9.800-095.0	▲ Tag, Pump Plug/Vented Cap (3510)	1
10	8.718-980.0	Washer, 5/16" Flat, SAE	16
11	9.802-776.0	Nut, 5/16", ESNA, NC	8
12	9.800-059.0	Label, Warning/Instructions	1
13	9.802-171.0	Nipple, 3/8" x 3/8" NPT ST Male	1
14	9.800-037.0	Label, French Warning	1
15	9.802-713.0	Bolt, 5/16" x 1-1/2" NC, HH (3510)	4
16	9.804-025.0	Pump Protector, 1/4" 145°(3500)	1
17	9.802-713.0	Bolt, 5/16" x 1-1/4", 145°	4
18	9.802-958.0	Key, Motor Shaft	1
19	9.802-225.0	Detergent Injector Assy 3-5 GPM 0.83(3500)	1
20	9.800-034.0	Label, Clear Lexan, 2-1/4" x 4"	1
21	9.802-146.0	Swivel, 1/2" MP x 3/4" GHF w/Strainer(3500)	1
22	9.800-006.0	Label, "Hot/Caliente", w/Arrows	1
23	8.932-968.0	Label, Intended For Outdoor Use	1
24	9.175-018.0	UU1 3500PSI, UNIVERSAL UNLOADER	1
25	9.800-049.0	Label, Manufacturers Cleaning Solution	6 ft.
26	9.802-813.0	Lock Washer (3510)	4
27	8.917-015.0	LABEL, REGULATION 4442.6	1

▲ Not Shown

## KG.1 PUMP EXPLODED VIEW

9.803-822.0 KG2530G.1  
9.803-823.0 KG3030G.1



G2530G.1  
G3030G.1

TORQUE SPECS	
Item #	Ft.-lbs
16	65
19	18
27	7.6
38	8
40	7
50	13

## KG.1 PUMP EXPLODED VIEW PARTS LIST

ITEM	PART NO.	DESCRIPTION	QTY	ITEM	PART NO.	DESCRIPTION	QTY
1	9.803-938.0	Crankcase	1	19	9.803-952.0	Manifold Stud Bolt	8
2*	See Kit Below	Plunger Oil Seal	3	20	9.802-884.0	Washer	8
3*	See Kit Below	O-Ring Ø1.78 x 28.30	3	21	9.803-198.0	Copper Washer 3/8"	1
4*	See Kit Below	Pressure Ring, 15mm	3	22	9.802-925.0	Brass Plug 3/8"	2
5*	See Kit Below	U-Seal, 15mm	3	27	9.802-939.0	Hexagonal Screw	9
6*	See Kit Below	Intermediate Ring 15mm	3	28	9.803-953.0	Bearing Cover	1
7*	See Kit Below	Backup Ring 15mm	3	29	9.803-954.0	Seal Bearing	1
8*	See Kit Below	U-Seal, 15mm	3	30	9.802-914.0	Snap Ring	1
9*	See Kit Below	Support Ring, 15mm	3	31	9.803-955.0	Ball Bearing	1
10	9.802-926.0	Brass Plug, 1/2"	1	32	8.717-069.0	Crankshaft (2530G)	1
11	9.803-199.0	Copper Washer 1/2"	1		8.717-070.0	Crankshaft (3030G)	1
12	9.803-946.0	Manifold Housing	1	33	9.803-957.0	Oil Dip Stick	1
13*	9.803-947.0	O-Ring Ø1.78 x 15.54	6	34	9.804-581.0	O-Ring 3.53 x 55.56	1
14*	See Kit Below	Valve Assembly	6	35	9.804-582.0	Needle Roller Bearing	1
15*	9.803-948.0	O-Ring Ø2.62 x 18.77	6	36	8.717-212.0	Engine Flange	1
16	9.803-949.0	Valve Plug	6	37	9.803-210.0	Spring Washer	4
17	9.803-950.0	Washer, Copper	1	38	9.804-584.0	Flange Screw	4
18	9.803-951.0	Brass Plug G1/4	1				

## KG.1 PUMP EXPLODED VIEW PARTS LIST (CONT)

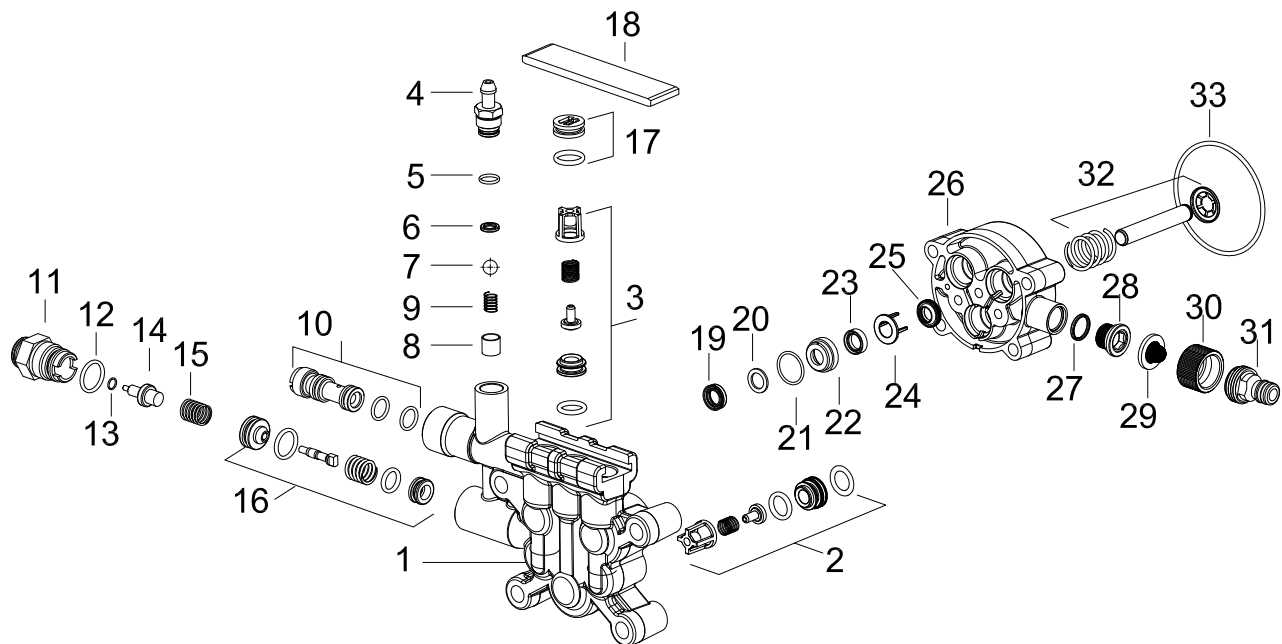
ITEM	PART NO.	DESCRIPTION	QTY
39	9.804-585.0	Crankshaft Seal	1
40*	See Kit Below	Plunger Nut	3
41*	See Kit Below	Copper Spacer	3
42*	See Kit Below	Plunger, 15mm	3
43*	See Kit Below	Copper Spacer	3
44*	See Kit Below	O-Ring Ø1.78x5.28	3
45*	See Kit Below	Teflon Ring	3
46	9.803-964.0	Plunger Rod	3
47	9.803-965.0	Connecting Rod Pin	3
45	9.803-966.0	Connecting Rod	3
49	9.803-218.0	Spring Washer	6
50	8.933-020.0	Connecting Rod Screw	6
54	9.803-969.0	O-Ring 2.62 x 107.62	1
53	9.803-968.0	Crankcase Cover	1
52	9.803-197.0	Gasket, G3/4	1
51	9.803-202.0	Sightglass G3/4	1

\* Part available in kit (See below)

REPAIR KIT NUMBER	8.725-354.0	8.725-355.0	9.803-934.0	9.803-936.0	9.803-937.0
KIT DESCRIPTION	Plunger Seal 15mm	Complete Seal Packing 15mm	Plunger 15mm	Complete Valve	Plunger Oil Seals
ITEM NUMBERS INCLUDED	3, 5, 7, 8, 9	3, 4, 5, 6, 7, 8, 9	40, 41, 42, 43, 44, 45	13, 14, 15	2
NUMBER OF CYLIN- DERS KIT WILL SER- VICE	3	1	1	6	3

## PUMP EXPLODED VIEW AND PARTS LIST

9.120-021.0  
3-23326

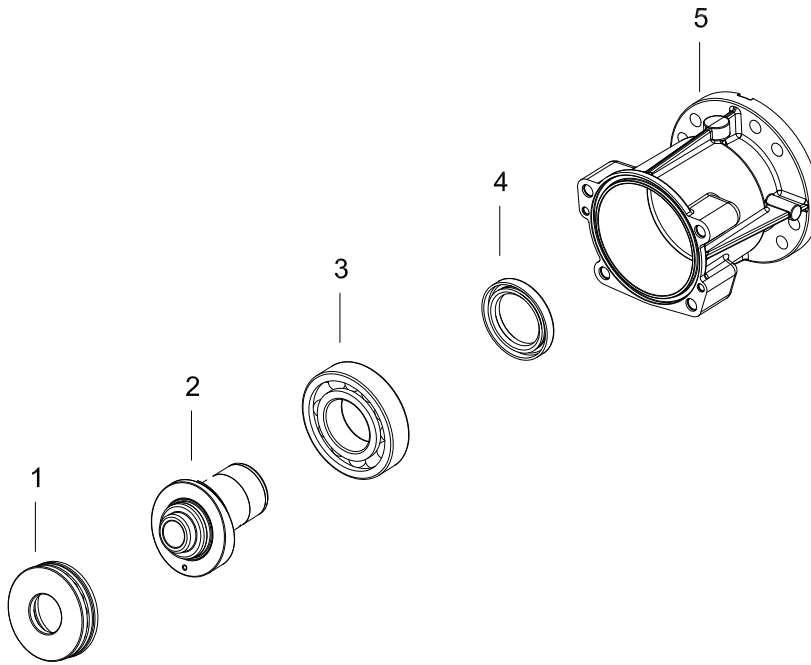


ITEM	PART NO.	DESCRIPTION	QTY
1	9.135-015.0	Cylinder Head	1
2	9.175-004.0	Valve Assy Horizontal	3
3	9.139-371.0	Spare Part List, Set 3	1
4	5.443-448.0	Nipple Chemistry	1
5	6.362-451.0	O-Ring Seal 8.0 x 1.0	1
6	6-362-634.0	O-Ring Seal, 5.28 x 1.78	1
7	7.401-909.0	Sphere 7 G40 - 1.4401	1
8	5.110-714.0	Sleeve	1
9	5.332-258.0	Helical Spring	1
10	9.139-372.0	Spare Part List Nozzle INS 020/021 PUMP	1
11	9.184-018.0	Outlet-Thermal Valve	1
12	6.362-480.0	O-Ring Seal, 12.42 x 1.78	1
13	7.362-507.0	O-Ring Seal 8 x 2 NBR 90	1
14	6.413-403.0	Thermo Valve Tin Coated	1

ITEM	PART NO.	DESCRIPTION	QTY
15	5.332-290.0	Helical Spring	1
16	9.175-005.0	Unloader Assembly	1
17	4.132-007.0	Drain Plug Replacement	1
18	5.003-062.0	Plate	1
19	9.177-301.0	Hich Pressure Seal	3
20	9.177-310.0	Back Ring	3
21	6.362-833.0	O-Ring Seal 12.5 x 1.73	3
22	9.155-011.0	Housing Low Pressure Seal	3
23	6.363-058.0	Grooved Ring	3
24	9.134-016.0	Spacer	3
25	6.365-393.0	Oil Sealing 12.20x4/6	3
26	9.133-007.0	Piston Guide	1
27	6.362-390.0	O-Ring Seal 15.6 x 1.8	1
28	9.134-019.0	Male Adapter	1
29	9.181-005.0	Filter Seal	1
30	9.155-013.0	Female House Conn	1
31	9.178-005.0	Adapter Garden	1
32	9.139-370.0	Spare Part List, Piston	1
33	6.362-471.0	O-Ring Seal 80.0x3.0 NBR70	1

# PUMP EXPLODED VIEW PARTS LIST

## 9.120-021.0 Housing View



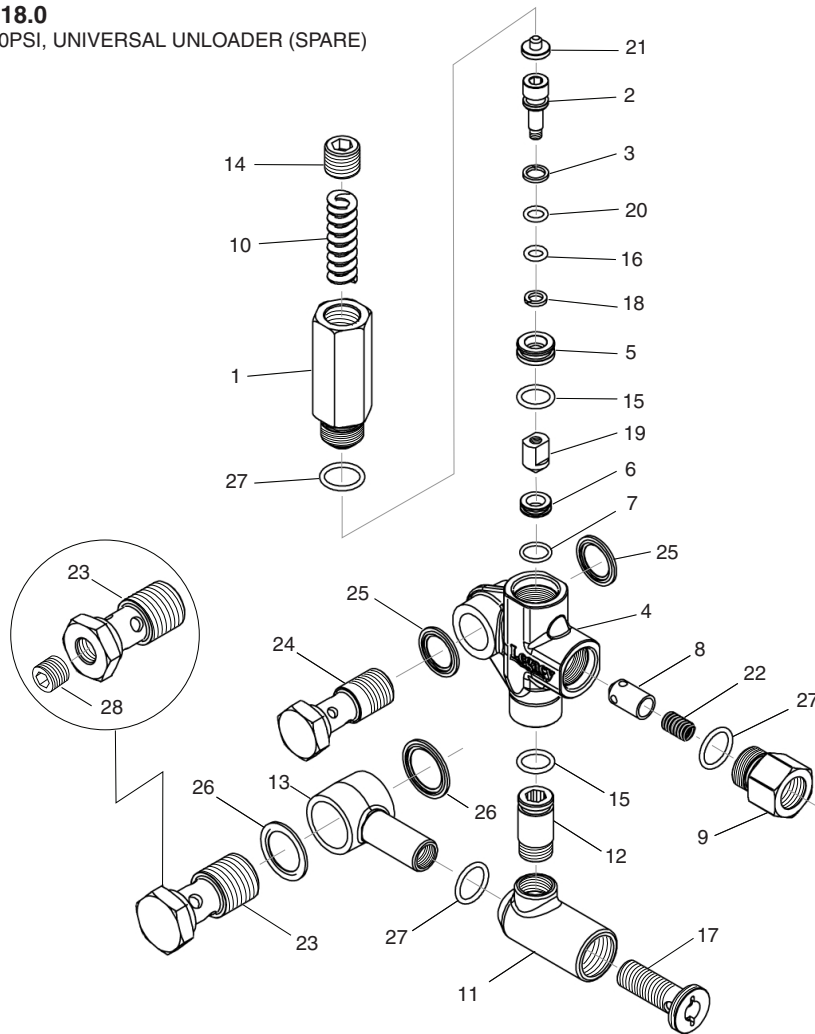
ITEM	PART NO.	DESCRIPTION	QTY
1	9.166-016.0	Grooved Ball Bearing	1
2	9.135-018.0	Swash Plate Hor.	1
3	9.165-356.0	Ball Bearing No 6207	1
4	9.177-314.0	Radial Seal 35 x 52 x 7	1
5	9.135-016.0	Oil Housing	1



## UU1 UNLOADER EXPLODED VIEW

**9.175-018.0**

UU1 3500PSI, UNIVERSAL UNLOADER (SPARE)



## UU1 UNLOADER EXPLODED VIEW PARTS LIST

ITEM	PART #	DESCRIPTION	KIT	QTY	ITEM	PART #	DESCRIPTION	KIT	QTY
1	8.749-792.0	Piston housing		1	17	9.149-006.0	Sliding connector guide		1
2		Piston	C	1	18		O-ring backup 6X 1.45X 1.68	A	1
3		Piston O-ring back up	A	1	19		Conical seal	C	1
4	8.749-796.0	Main block		1	20		O-ring 6.75 X 1.78 BN80	A	1
5	9.152-372.0	Piston ring		1	21		Spring seat	C	1
6		Ball seat	C	1	22		Plunger spring	B	1
7		O-ring 10.5 ID X 1.5 CS	A,C	1	23	8.762-001.0	Banjo bolt 1/2"		1
8		Plunger	B	1		8.762-011.0	Banjo bolt 1/2"-1/4"NPT		1
9	9.152-016.0	Plunger housing		1		8.762-000.0	Banjo bolt 3/8"		1
10		Bypass spring	C	1	24	8.762-000.0	Banjo bolt 3/8"		1
11	9.149-001.0	Low pressure port		1	25	9.802-893.0	Seal washer 3/8"		2
12	9.152-017.0	Sliding connector, 30mm		1	26	9.803-921.0	Seal washer 1/2"		2
	8.762-005.0	Sliding connector, 40mm, long		1		9.802-893.0	Seal washer 3/8"		2
13	9.149-002.0	Sliding connector H 1/2"		1	27		O-RING 15 ID x 2CS	A,B	3
	9.149-005.0	Sliding connector H 3/8"		1	28	8.706-865.0	Plug, 1/4" countersunk		1
14	9.196-011.0	Plug 5/8 -18 UNF		1	<b>Kit A</b>	9.104-038.0	O-ring Repair Kit		
15		O-ring 12 ID x 2 CS	A	2	<b>Kit B</b>	9.104-039.0	Outlet Kit		
16		O-ring 6 ID X 2 CS	A	1	<b>Kit C</b>	9.104-040.0	Stem Repair Kit		