

Spare parts list
(5.958-772.0) Spare parts list BR 530 BAT

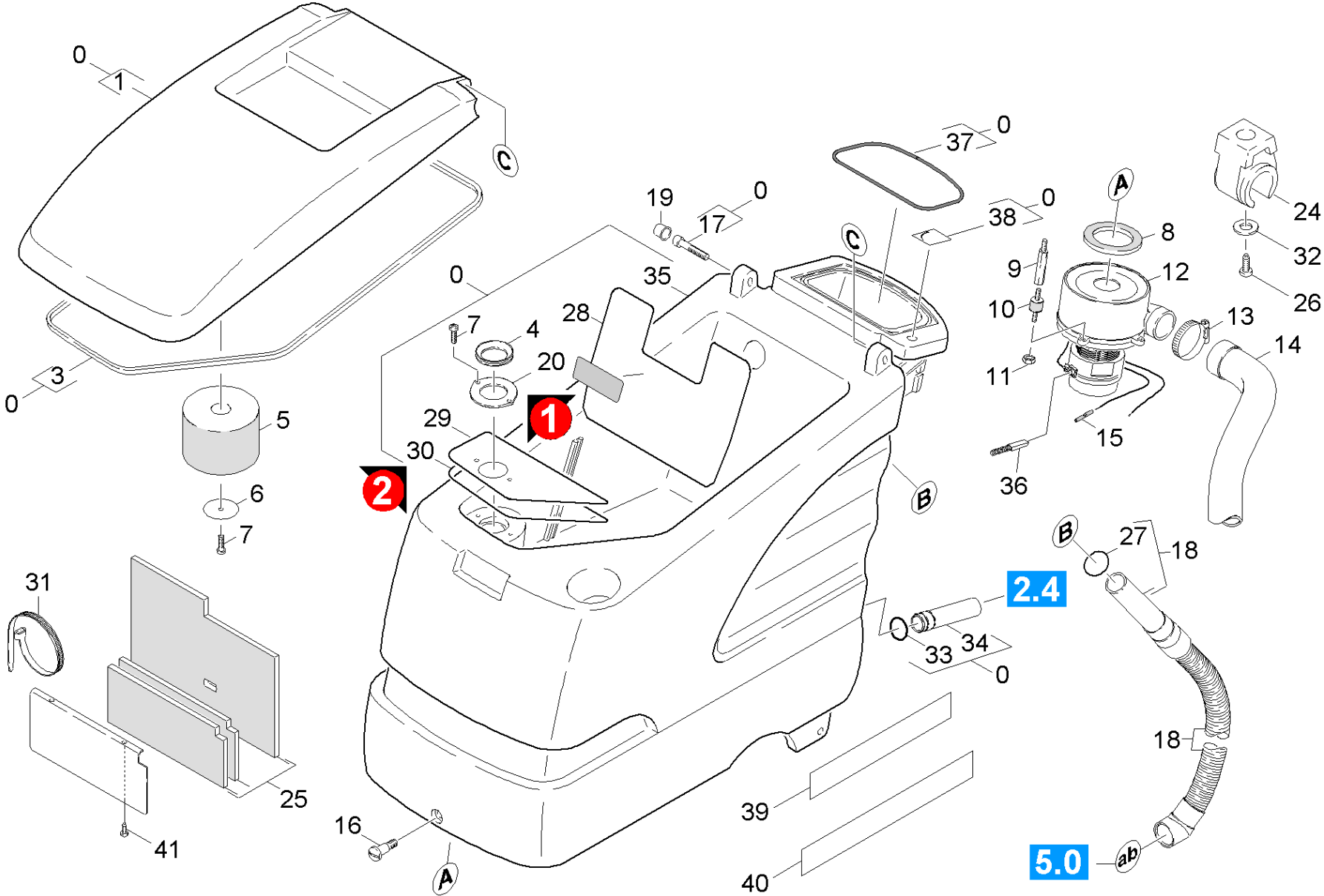
Table of contents

Spare parts list BR 530 BAT (5.958-772.0)	6
10 Cover and motor (0.163-209.0)	7
20 Appliance individual parts BR 530 BAT (0.163-221.0)	11
21 Control panel BR 530 BAT (0.163-210.0)	12
22 Control panel BR 530 BAT (0.163-211.0)	15
23 Handhold BR 530 BAT (0.163-212.0)	18
24 Handhold (0.163-744.0)	21
30 Chassis (0.162-974.0)	24
40 Switch box BAT (0.161-445.0)	29
50 Suction mechanism (0.163-494.0)	32
51 Bracket suction bar (0.163-497.0)	33
52 Suction bar (0.163-495.0)	36
53 Suction bar (0.163-496.0)	39
54 Suction bar (0.165-441.0)	42
60 Power brush (0.163-216.0)	44
70 Pad roll (0.125-147.0)	50
80 Carriage (0.163-609.0)	52

Spare parts list BR 530 BAT (5.958-772.0)

Pos	Material #	Name	from ser.nr.	up to ser.nr.
10	0.163-209.0	Cover and motor	0000000000	0000000000
20	0.163-221.0	Appliance individual parts BR 530 BAT	0000000000	0000000000
30	0.162-974.0	Chassis	0000000000	0000000000
40	0.161-445.0	Switch box BAT		<35011
50	0.163-494.0	Suction mechanism	0000000000	0000000000
60	0.163-216.0	Power brush	0000000000	0000000000
70	0.125-147.0	Pad roll	0000000000	0000000000
80	0.163-609.0	Carriage	0000000000	0000000000

10 Cover and motor (0.163-209.0)



10 Cover and motor (0.163-209.0)

ET/VT (spare/wear parts)	Pos	Material #	Name	Qty.	Unit	from ser.nr.	up to ser.nr.	var. information	Footnote text
	0	4.605-067.0	Housing and cover	1.000	ST	0000000000	0000000000		
Position text: 1.127-361 / -681 / -332 / -461 / -432									
	0	4.605-073.0	Housing low noise	1.000	ST	0000000000	0000000000		
Position text: 1.127-331 / -431									
	1	5.063-766.0	Cover	1.000	ST	0000000000	0000000000		
X-X	3	6.366-043.0	Sealing profile	2.000	M	0000000000	0000000000		TO ORDER AS CUT GOOD
X-X	4	5.363-344.0	Joint ring	1.000	ST	0000000000	0000000000		
X-X	5	5.585-058.0	Float BR/BD 530	1.000	ST	0000041856	0000000000		
X-X	5	5.585-027.0	Float	1.000	ST	0000000000	0000041855		
X-X	6	5.115-754.0	Washer	1.000	ST	0000000000	0000000000		
X-X	7	7.303-107.0	Screw 5x16 -10.9-P2R (K-In6Rd)	3.000	ST	0000000000	0000000000		
X-X	8	5.363-574.0	Joint ring	1.000	ST	0000000000	0000000000		
X-X	9	5.308-056.0	Stud bolt	3.000	ST	0000000000	0000000000		
X-X	10	6.339-021.0	Rubber buffer 2xM6-D20 H15	3.000	ST	0000000000	0000000000		
X	11	7.311-541.0	Hexagon nut M 6-8-A2E EN 1661	3.000	ST	0000000000	0000000000		
X-X	12	6.490-115.0	Vacuum motor 24V	1.000	ST	0000000000	0000000000	ROTAFIL	
X-X	13	6.641-474.0	Cable tape 8-210	1.000	ST	0000000000	0000000000		
X-X	14	6.390-215.0	Soundproof hose	1.000	ST	0000000000	0000000000		
Position text: 1.127-332 / -361 / -432 / -461 / -681									
X-X	14	6.388-949.0	SUCTION TUBE	1.000	ST	0000000000	0000000000		
Position text: 1.127-331 / -431									
X-X	15	6.647-543.0	Series connector 6,0mm ²	2.000	ST				
X-X	16	5.305-204.0	Shaped screw	1.000	ST	0000000000	0000000000		
X-X	17	7.306-049.0	Cylinder head screw M 8x45-8.8-A2E ISO	2.000	ST	0000000000	0000000000		
X-X	18	4.390-002.0	Suction hose complete oil resistant	1.000	ST	0000000000	0000000000		OIL RESISTANT

10 Cover and motor (0.163-209.0)

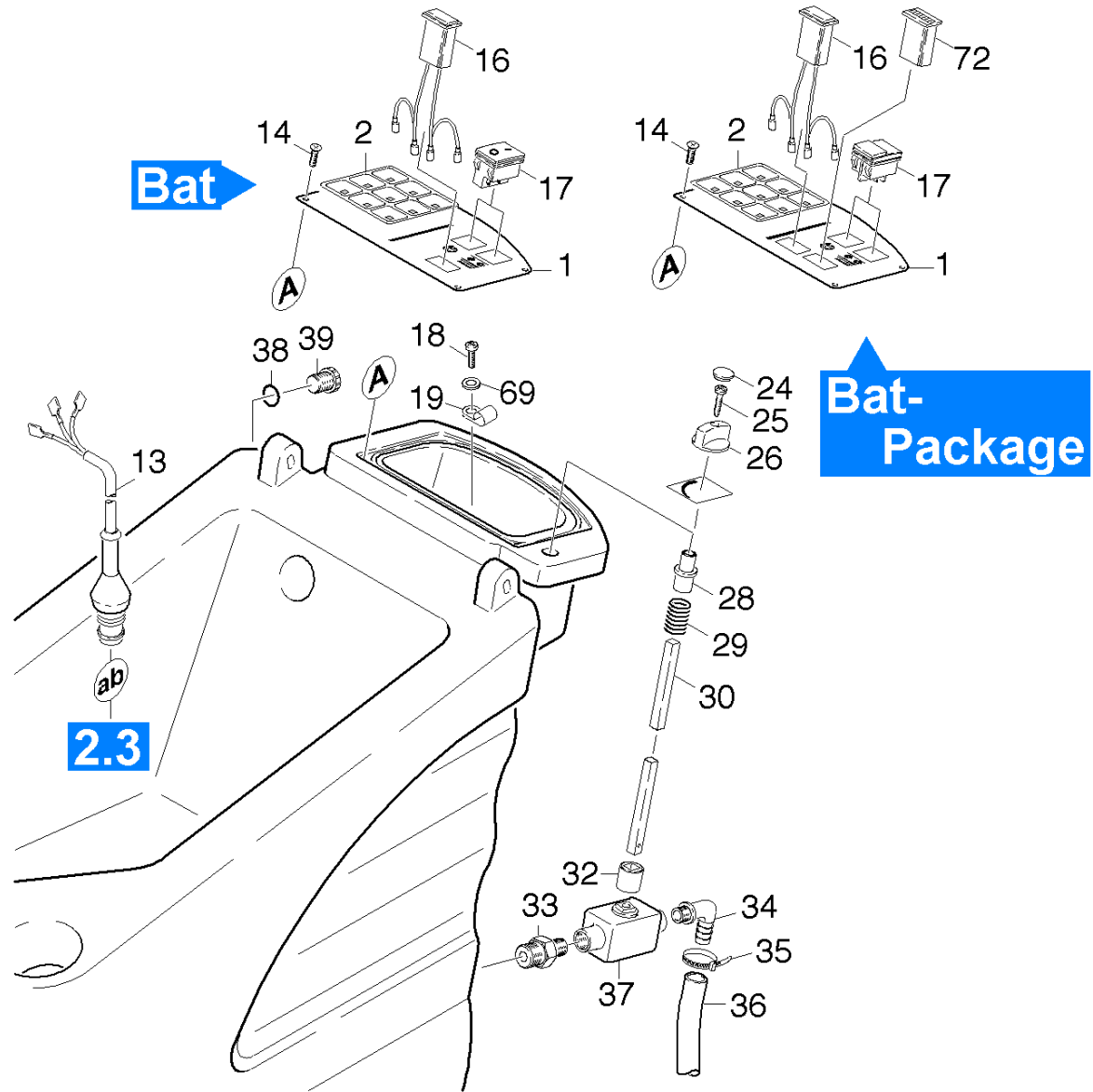
ET/VT (spare/wear parts)	Pos	Material #	Name	Qty.	Unit	from ser.nr.	up to ser.nr.	var. information	Footnote text
X-X	18	4.390-007.0	Suction hose complete	1.000	ST				STANDARD
X	19	6.368-295.0	Protecting cap	2.000	ST	0000000000	0000000000		
X-X	20	5.001-752.0	Plate	1.000	ST	0000000000	0000000000		VERSION 1
	24	6.373-692.0	Pipe clip D 63	1.000	ST	0000000000	0000000000		
	25	5.637-001.0	Sound insulation for sheet metal compone	1.000	ST	0000000000	0000000000		
Position text: /1.127-331.0 / -431.0									
X-X	26	7.306-031.0	Screw M 6x16-A2-70 DIN 7984	1.000	ST	0000000000	0000000000		
X-X	27	6.362-089.0	O-Ring seal 40,0 X 3,0	1.000	ST	0000000000	0000000000		
X	28	5.008-301.0	Sheet metal component	1.000	ST	0000000000	0000000000		
X	28	5.008-301.0	Sheet metal component	1.000	ST	0000000000	0000000000		STAINLESS STEEL CONS
Position text: / 1.127-332.0 / -432.0									
X-X	29	5.001-813.0	Plate	1.000	ST	0000000000	0000000000		VERSION 2
	29	5.007-769.0	Plate	1.000	ST	0000000000	0000000000		STAINLESS STEEL CONS
Position text: / 1.127-332.0 / -432.0									
X-X	30	5.363-420.0	Seal	1.000	ST	0000000000	0000000000		VERSION 2
	31	6.647-081.0	Cable tape	2.000	ST	0000000000	0000000000		
Position text: /1.127-331.0 / -431.0									
X-X	32	7.312-017.0	Washer 8-A2 ISO 7089	1.000	ST	0000000000	0000000000		
X-X	33	6.362-385.0	O-Ring seal 26,0 X 2,5-NBR 70	1.000	ST	0000000000	0000000000		
X-X	34	5.128-352.0	Tube	1.000	ST	0000000000	0000000000		
	35	7.777-999.0	Stockpiling discontinued	1.000	ST	0000035012	0000000000		
	36	6.610-022.0	Carbon brush	2.000	ST	0000000000	0000000000		
X	37	6.273-145.0	Cord cellular rubber	1.000	ZST	0000000000	0000000000		
	38	5.382-594.0	Label water tap	1.000	ST	0000000000	0000000000		
	39	5.382-645.0	Label BR530 BAT	1.000	ST	0000000000	0000000000		

10 Cover and motor (0.163-209.0)

ET/VT (spare/wear parts)	Pos	Material #	Name	Qty.	Unit	from ser.nr.	up to ser.nr.	var. information	Footnote text
	39	7.777-999.0	Stockpiling discontinued	1.000	ST	0000000000	0000000000		STAINLESS STEEL CONS
Position text: / 1.127-332.0 / -432.0									
	40	5.387-078.0	Label BR 530 XL	1.000	ST	0000000000	0000000000		
Position text: / 1.127-332.0 / -432.0									
	40	5.382-801.0	Label BR530 XL BAT	1.000	ST	0000000000	0000000000		
Position text: / 1.127-431.0 / -432.0 / -461.0									
X-X	41	7.304-393.0	Hexagonal head screw M 8x10-8.8-A2E ISO	2.000	ST	0000000000	0000000000		
Position text: /1.127-331.0 / -431.0									

20 Appliance individual parts BR 530 BAT (0.163-221.0)

Pos	Material #	Name	Qty.	Unit	from ser.nr.	up to ser.nr.
21	0.163-210.0	Control panel BR 530 BAT	1.000	ST		<35011
22	0.163-211.0	Control panel BR 530 BAT	1.000	ST	>35012	
23	0.163-212.0	Handhold BR 530 BAT	1.000	ST		<35011
24	0.163-744.0	Handhold	1.000	ST	>35012	



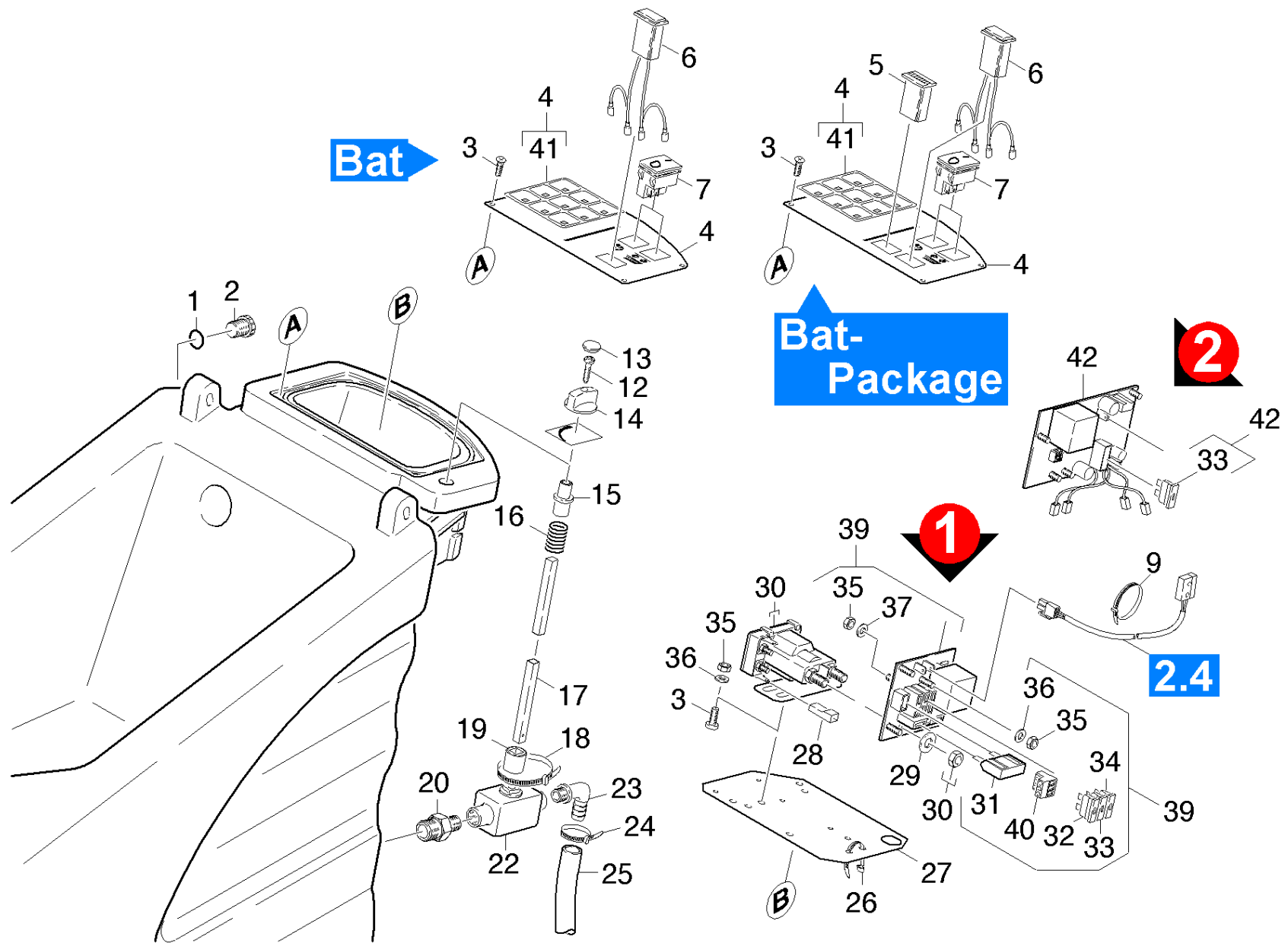
21 Control panel BR 530 BAT (0.163-210.0)

ET/VT (spare/wear parts)	Pos	Material #	Name	Qty.	Unit	from ser.nr.	up to ser.nr.	var. information	Footnote text
	1	4.841-118.0	Control panel	1.000	ST	0000000000	0000000000	BAT	
Position text: / 1.127-161.0 / -261.0 / -361.0/ -461.0									
	1	5.841-351.0	Control panel reworking	1.000	ST	0000000000	0000000000	BAT-PACKAGE	
Position text: / 1.127-131.0 / -231.0 / -331.0/ -431.0									
	2	5.380-209.0	Label	1.000	ST	0000000000	0000000000		
	13	4.839-216.0	Electrical small parts	1.000	ST	0000000000	0000000000		
Position text: / 1.127-131.0 / -161.0 / -231.0/ -261.0 / -331.0 / -361.0 / -431.0									
X-X	14	7.303-129.0	Screw 4x16 -10.9-R2R (K-In6Rd)	4.000	ST	0000000000	0000000000		
	16	6.682-395.0	Battery monitoring 24 V BR/BD530 BAT	1.000	ST	0000000000	0000000000		
Position text: / 1.127-131.0 / -161.0 / -231.0 / -261.0									
X-X	16	6.682-949.0	Battery monitoring 24 V BR/BD530 BAT	1.000	ST				
Position text: /1.127-331.0 / -332.0 / -361.0 / -431.0/ -432.0 / -461.0 / -681.0									
X-X	17	6.630-385.0	Switch	2.000	ST	0000000000	0000000000		
	18	6.303-155.0	Screw 5x16	1.000	ST	0000000000	0000000000		
	19	6.373-670.0	Pipe clamp	1.000	ST	0000000000	0000000000		
X	24	6.368-076.0	Ornamental hub cap D10/D12	1.000	ST	0000000000	0000000000		
	25	7.303-065.0	Sheet metal screw ST3,5X25-ST-A2R (IN6R	1.000	ST	0000000000	0000000000		
X-X	26	5.321-509.0	Handhold	1.000	ST	0000000000	0000000000		
X-X	28	5.470-034.0	Coupler	1.000	ST	0000000000	0000000000		
	29	5.332-290.0	Helical spring	1.000	ST	0000000000	0000000000		
	30	5.107-238.0	Bar	1.000	ST	0000000000	0000000000		STAINLESS STEEL CONS
Position text: / 1.127-332.0 / -432.0									
X	30	5.107-195.0	Bar	1.000	ST	0000000000	0000000000		
X-X	32	5.470-033.0	Coupler	1.000	ST	0000000000	0000000000		
X	33	5.409-266.0	Double nipple G3/8"-M12	1.000	ST	0000000000	0000000000		

21 Control panel BR 530 BAT (0.163-210.0)

ET/VT (spare/wear parts)	Pos	Material #	Name	Qty.	Unit	from ser.nr.	up to ser.nr.	var. information	Footnote text
X-X	34	6.390-002.0	Angle bushing	1.000	ST	0000000000	0000000000		
X-X	35	6.388-545.0	Hose clip	2.000	ST	0000000000	0000000000		
X-X	36	6.388-248.0	Hose DN12,5	1.000	M	0000000000	0000000000		TO ORDER AS CUT GOOD
X-X	37	6.412-289.0	Ball valve	1.000	ST	0000000000	0000000000		
X-X	38	6.362-151.0	O-Ring d. 10 x 2 NBR 70	1.000	ST	0000000000	0000000000		
X	39	6.382-001.0	Screw plug	1.000	ST	0000000000	0000000000		
X-X	69	7.312-278.0	Washer 5-200HV-A2E ISO7093-1	1.000	ST	0000000000	0000000000		
	72	6.682-458.0	Hour counter 10-50V DC	1.000	ST	0000000000	0000000000		

Position text: / 1.127-131.0 / -231.0 / -331.0/ -431.0

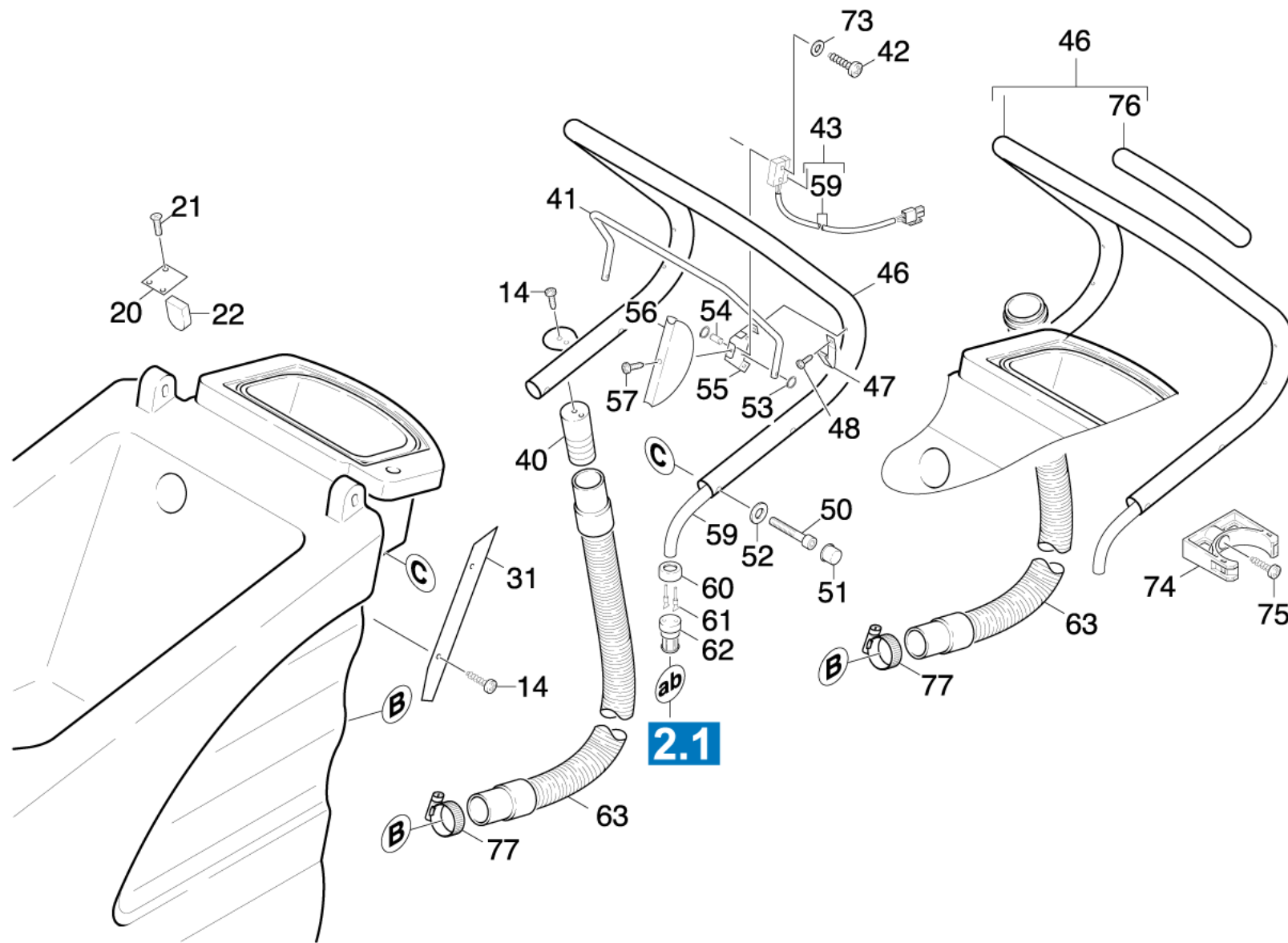


22 Control panel BR 530 BAT (0.163-211.0)

ET/VT (spare/wear parts)	Pos	Material #	Name	Qty.	Unit	from ser.nr.	up to ser.nr.	var. information	Footnote text
X-X	1	6.641-654.0	Flat gasket 13X20	1.000	ST	0000000000	0000000000		
X-X	2	6.382-003.0	Cap closure	1.000	ST	0000000000	0000000000		
X-X	3	7.306-071.0	Screw M5x10 -8.8-R2R (In6Rd)	6.000	ST	0000000000	0000000000		
	4	4.841-120.0	Control panel	1.000	ST	0000000000	0000000000	BAT-PACKAGE	
Position text: / 1.127-131.0 / -231.0 / -331.0 / -431.0									
	4	4.841-118.0	Control panel	1.000	ST	0000000000	0000000000	BAT	
Position text: / 1.127-161.0 / -261.0 / -361.0 / -461.0 / -681.0									
	5	6.681-088.0	Hour counter	1.000	ST	0000000000	0000000000		
Position text: / 1.127-131.0 / -231.0 / -331.0 / -431.0									
	6	6.682-395.0	Battery monitoring 24 V BR/BD530 BAT	1.000	ST	0000038122	0000000000		
Position text: / 1.127-131.0 / -161.0 / -231.0 / -261.0									
X-X	6	6.682-949.0	Battery monitoring 24 V BR/BD530 BAT	1.000	ST				
Position text: /1.127-331.0 / -332.0 / -361.0 / -431.0 / -432.0 / -461.0 / -681.0									
X-X	7	6.630-385.0	Switch	2.000	ST	0000000000	0000000000		
X-X	9	6.641-458.0	Cable tape	1.000	ST	0000000000	0000000000		
	12	7.303-065.0	Sheet metal screw ST3,5X25-ST-A2R (IN6R	1.000	ST	0000000000	0000000000		
X	13	6.368-076.0	Ornamental hub cap D10/D12	1.000	ST	0000000000	0000000000		
X-X	14	5.321-509.0	Handhold	1.000	ST	0000000000	0000000000		
X-X	15	5.470-034.0	Coupler	1.000	ST	0000000000	0000000000		
	16	5.332-290.0	Helical spring	1.000	ST	0000000000	0000000000		
	17	5.107-238.0	Bar	1.000	ST	0000000000	0000000000		STAINLESS STEEL CON
Position text: / 1.127-332.0 / -432.0									
X	17	5.107-195.0	Bar	1.000	ST	0000000000	0000000000		
X-X	18	6.641-464.0	Cable tie	6.000	ST	0000000000	0000000000		
X-X	19	5.470-033.0	Coupler	1.000	ST	0000000000	0000000000		

22 Control panel BR 530 BAT (0.163-211.0)

ET/VT (spare/wear parts)	Pos	Material #	Name	Qty.	Unit	from ser.nr.	up to ser.nr.	var. information	Footnote text
X	20	5.409-306.0	Double nipple	1.000	ST	0000000000	0000000000		
X-X	22	6.412-289.0	Ball valve	1.000	ST	0000000000	0000000000		
X-X	23	6.390-002.0	Angle bushing	1.000	ST	0000000000	0000000000		
X-X	24	6.388-545.0	Hose clip	1.000	ST	0000000000	0000000000		
X-X	25	6.388-248.0	Hose DN12,5	2.000	M	0000000000	0000000000		TO ORDER AS CUT GOO
X-X	26	6.641-463.0	Cable tape	1.000	ST	0000000000	0000000000		
	27	5.007-204.0	Plate	1.000	ST	0000000000	0000000000		
	28	6.647-748.0	Insulation sheath	11.000	ST	0000000000	0000000000		
X-X	29	7.312-004.0	Washer 8 -200HV-A3E ISO 7090	4.000	ST	0000000000	0000000000		
X-X	30	6.633-389.0	Power relay	1.000	ST	0000000000	0000000000		
X-X	31	6.644-277.0	Fuse insert -60A	1.000	ST	0000000000	0000000000		
X-X	32	7.644-006.0	Fuse insert C 3 DIN 72581-3	1.000	ST	0000000000	0000000000		
X-X	33	7.644-018.0	Fuse insert C15 DIN 72581-3	1.000	ST	0000000000	0000000000		
X-X	34	7.644-040.0	Fuse insert C30 DIN 72581-3	1.000	ST	0000000000	0000000000		
X-X	35	7.311-002.0	Hexagon nut M5 -8-A2E ISO 4032	9.000	ST	0000000000	0000000000		
X-X	36	7.312-002.0	Washer 5-200HV-A3E ISO 7090	3.000	ST	0000000000	0000000000		
X-X	37	7.312-278.0	Washer 5-200HV-A2E ISO7093-1	4.000	ST	0000000000	0000000000		
X-X	39	6.682-570.0	Circuit board distributor	1.000	ST	0000000000	0000000000	Version 1	WITHOUT DISPLAY
	40	6.646-471.0	Plug triple-pole	1.000	ST	0000000000	0000000000		
	41	5.380-209.0	Label	1.000	ST	0000000000	0000000000		
X-X	42	6.682-900.0	Control circuit board BR 530 Ratio	1.000	ST			Version 2	WITH DISPLAY

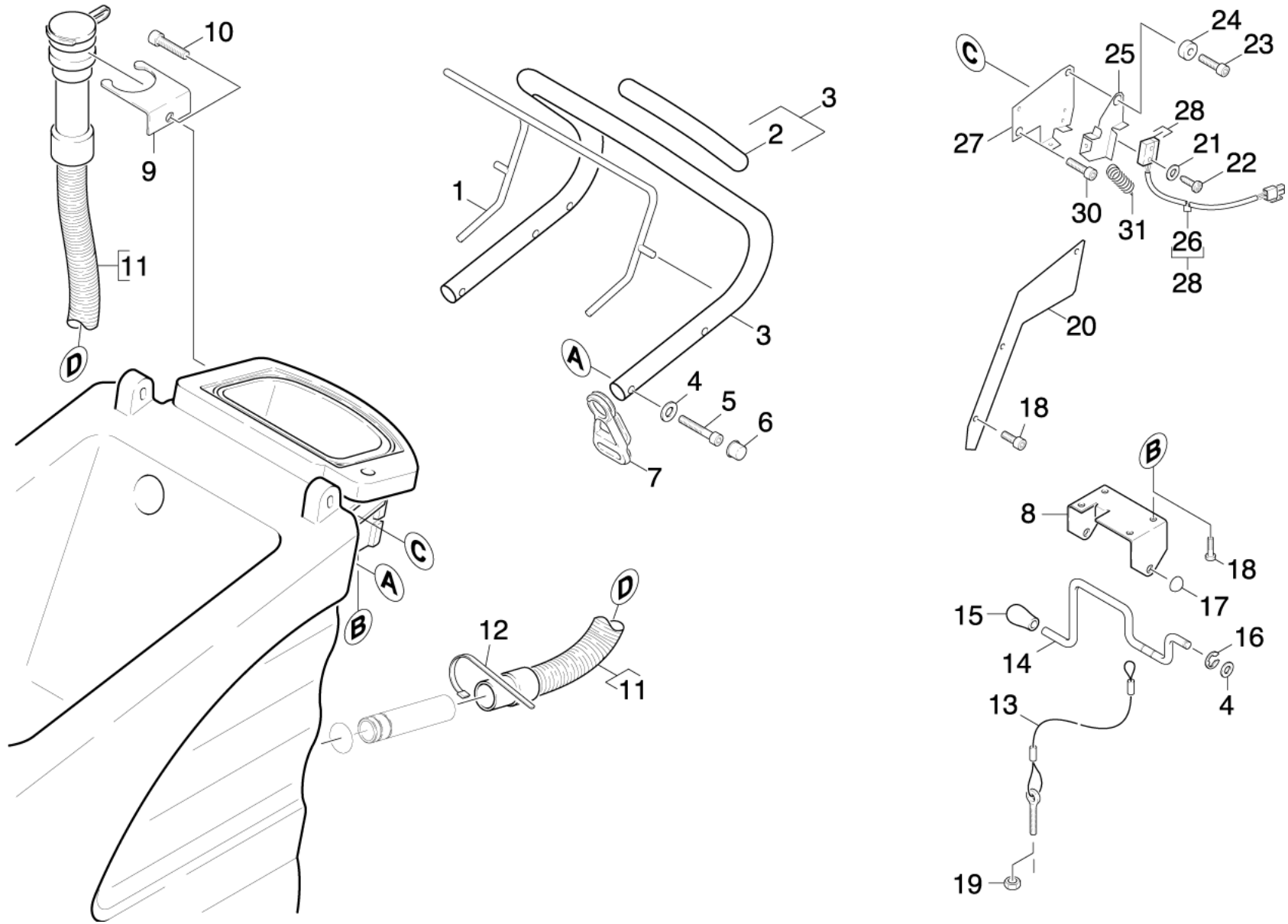


23 Handhold BR 530 BAT (0.163-212.0)

ET/VT (spare/wear parts)	Pos	Material #	Name	Qty.	Unit	from ser.nr.	up to ser.nr.	Footnote text
X-X	14	7.303-129.0	Screw 4x16 -10.9-R2R (K-In6Rd)	3.000	ST	0000000000	0000000000	
	20	5.004-837.0	Strap RBE4/ SPUR 3820	1.000	ST	0000000000	0000000000	
X-X	21	7.303-125.0	Countersunk screw 4x16 -10.9-R2R (In6Rd	3.000	ST	0000000000	0000000000	
	22	5.365-220.0	Seal stop	2.000	ST	0000000000	0000000000	
	31	5.001-716.0	Plate	1.000	ST	0000000000	0000000000	
X	40	5.030-350.0	Moulded part	1.000	ST	0000000000	0000014814	
	41	5.034-554.0	Retaining bracket cabinet	1.000	ST	0000000000	0000000000	
	42	7.303-386.0	Sheet metal screw ST2,2X13,0-ST-A2E ISO	2.000	ST	0000000000	0000000000	
X-X	43	4.744-154.0	Micro switch	1.000	ST	0000000000	0000000000	
	46	4.321-134.0	Handhold	1.000	ST	0000014815	0000000000	
	46	4.321-099.0	Handhold	1.000	ST	0000000000	0000014814	
	47	5.337-031.0	Plate spring stop	1.000	ST	0000000000	0000000000	
	48	7.303-031.0	Screw M4x10 -St-P2R (In6Rd)	4.000	ST	0000000000	0000000000	
X-X	50	7.306-044.0	Cylinder head screw M8x35 -8.8-A2E ISO4	4.000	ST	0000000000	0000000000	
X	51	6.368-295.0	Protecting cap	4.000	ST	0000000000	0000000000	
X-X	52	7.312-004.0	Washer 8 -200HV-A3E ISO 7090	4.000	ST	0000000000	0000000000	
	53	7.343-305.0	Lock washer 3,2-A2 DIN 6799	4.000	ST	0000000000	0000000000	
	54	5.316-862.0	Bolt stop	2.000	ST	0000000000	0000000000	
	55	5.044-120.0	Holder storage cabinet	2.000	ST	0000000000	0000000000	
	56	5.031-541.0	Covering cap	1.000	ST	0000000000	0000000000	
	57	7.303-135.0	Sheet metal screw ST4,2X 6,5-ST-A2R (IN	2.000	ST	0000000000	0000000000	
	59	6.642-003.0	Insulating hose 4	1.000	M	0000000000	0000000000	TO ORDER AS CUT GOODS
	60	6.647-994.0	Cap rubber two-core	1.000	ST	0000000000	0000000000	
	61	6.646-390.0	Pin contact 0,3-0,5mm ²	3.000	ST	0000000000	0000000000	QUANTITY ACCORDING TO DEMAND
	62	6.646-388.0	Plug housing two-pole	1.000	ST	0000000000	0000000000	

23 Handhold BR 530 BAT (0.163-212.0)

ET/VT (spare/wear parts)	Pos	Material #	Name	Qty.	Unit	from ser.nr.	up to ser.nr.	Footnote text
X-X	63	6.390-177.0	Drain hose DN32	1.000	ST	0000000000	0000014769	
X-X	63	4.446-010.0	Drain hose BR/BD 530	1.000	ST	0000014770	0000000000	FOR ASA 80
	73	7.312-067.0	Washer 4-A2 ISO 7089	2.000	ST	0000000000	0000000000	
	74	6.373-692.0	Pipe clip D 63	1.000	ST	0000014815	0000000000	
	75	7.306-119.0	Cylinder head screw M8x12 -A2-70 ISO 47	1.000	ST	0000014815	0000000000	
	76	6.390-269.0	Hose	1.000	M	0000014815	0000000000	TO ORDER AS CUT GOODS
X-X	77	6.388-549.0	Hose clip	1.000	ST	0000000000	0000000000	

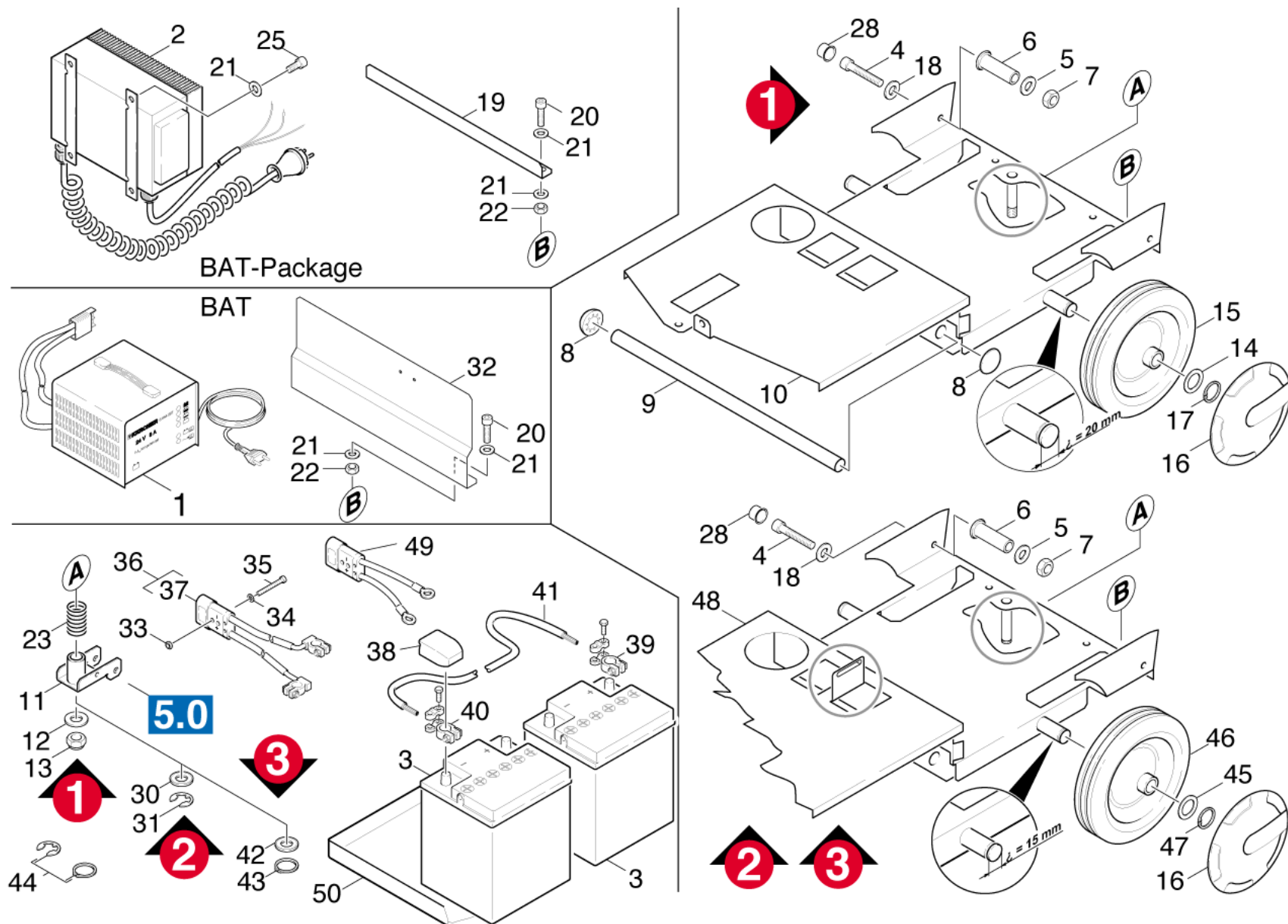


24 Handhold (0.163-744.0)

ET/VT (spare/wear parts)	Pos	Material #	Name	Qty.	Unit	from ser.nr.	up to ser.nr.	var. information	Footnote text
	1	4.034-128.0	Retaining bracket complete	1.000	ST	0000000000	0000000000		STAINLESS STEEL CON
Position text: / 1.127-332.0 / -432.0									
	1	4.034-107.0	Retaining bracket complete	1.000	ST	0000000000	0000000000		
	2	6.390-269.0	Hose	1.000	M	0000000000	0000000000		TO ORDER AS CUT GOO
	3	4.321-135.0	Handhold	1.000	ST	0000000000	0000000000		
	3	4.321-160.0	Handhold complete stainless steel nur fu	1.000	ST	0000000000	0000000000		STAINLESS STEEL CON
X-X	4	7.312-017.0	Washer 8-A2 ISO 7089	10.000	ST	0000000000	0000000000		
X-X	5	7.306-044.0	Cylinder head screw M8x35 -8.8-A2E ISO4	4.000	ST	0000000000	0000000000		
X	6	6.368-295.0	Protecting cap	4.000	ST	0000000000	0000000000		
	7	6.641-776.0	Strain relief	1.000	ST	0000000000	0000000000		
	8	5.044-298.0	Holder	1.000	ST	0000000000	0000000000		
	8	5.044-622.0	Holder	1.000	ST	0000000000	0000000000		STAINLESS STEEL CON
Position text: / 1.127-332.0 / -432.0									
	9	5.058-800.0	Sheet metal component	1.000	ST	0000000000	0000000000		STAINLESS STEEL CON
Position text: / 1.127-332.0 / -432.0									
X	9	5.059-011.0	Sheet metal component	1.000	ST	0000000000	0000000000		
	10	7.306-119.0	Cylinder head screw M8x12 -A2-70 ISO 47	1.000	ST	0000000000	0000000000		
X-X	11	6.390-733.0	Drain hose DN32 BR-BD 530	1.000	ST	0000000000	0000000000		OIL RESISTANT
X-X	11	6.390-610.0	Drain hose DN32	1.000	ST				STANDARD
X-X	12	6.388-549.0	Hose clip	2.000	ST	0000000000	0000000000		
X-X	13	4.172-016.0	Rope suction beam retraction	1.000	ST	0000000000	0000000000		
	13	4.172-022.0	Rope suction beam retraction	1.000	ST	0000000000	0000000000		STAINLESS STEEL CON
Position text: / 1.127-332.0 / -432.0									
	14	5.034-721.0	Retaining bracket	1.000	ST	0000000000	0000000000		STAINLESS STEEL CON
Position text: / 1.127-332.0 / -432.0									

24 Handhold (0.163-744.0)

ET/VT (spare/wear parts)	Pos	Material #	Name	Qty.	Unit	from ser.nr.	up to ser.nr.	var. information	Footnote text
	14	4.034-222.0	Retaining bracket complete	1.000	ST	0000000000	0000000000		
X-X	15	6.321-154.0	Push button D 8	1.000	ST	0000000000	0000000000	VERSION 1	WITHOUT THREAD
	15	5.034-930.0	Button retaining bracket	1.000	ST				WITH THREAD
	16	7.343-300.0	Lock washer 7-A2 DIN 6799	2.000	ST	0000000000	0000000000		
X	17	6.343-132.0	Lock washer 8	3.000	ST	0000000000	0000000000		
X-X	18	7.303-107.0	Screw 5x16 -10.9-P2R (K-In6Rd)	7.000	ST	0000000000	0000000000		
X-X	19	7.311-224.0	Hexagon nut M 8-04-A2E ISO 4035	1.000	ST	0000000000	0000000000		
	20	5.007-007.0	Plate	1.000	ST	0000000000	0000000000		
	20	5.007-596.0	Plate	1.000	ST	0000000000	0000000000		STAINLESS STEEL CONN
Position text: / 1.127-332.0 / -432.0									
	21	7.312-280.0	Washer 3 -200HV-A2E ISO7093-1	2.000	ST	0000000000	0000000000		
	22	7.303-386.0	Sheet metal screw ST2,2X13,0-ST-A2E ISO	2.000	ST	0000000000	0000000000		
	23	7.306-090.0	Screw M6x16 -8.8-R3R (In6Rd)	1.000	ST	0000000000	0000000000		
	24	5.115-860.0	Washer	1.000	ST	0000000000	0000000000		
	25	5.059-866.0	Sheet metal component	1.000	ST	0000000000	0000000000		STAINLESS STEEL CONN
Position text: / 1.127-332.0 / -432.0									
	25	5.048-878.0	Sheet metal component	1.000	ST	0000000000	0000000000		
	26	6.642-003.0	Insulating hose 4	1.000	M	0000000000	0000000000		TO ORDER AS CUT GOO
	27	5.048-904.0	Sheet metal component	1.000	ST	0000000000	0000000000		
	27	5.059-868.0	Sheet metal component	1.000	ST	0000000000	0000000000		STAINLESS STEEL CONN
Position text: / 1.127-332.0 / -432.0									
X-X	28	4.744-154.0	Micro switch	1.000	ST	0000000000	0000000000		
X-X	30	7.306-089.0	Screw M6x12 -8.8-R2R (In6Rd)	1.000	ST	0000000000	0000000000		
X-X	31	6.330-011.0	Extension spring	1.000	ST	0000000000	0000000000		



30 Chassis (0.162-974.0)

ET/VT (spare/wear parts)	Pos	Material #	Name	Qty.	Unit	from ser.nr.	up to ser.nr.	var. information	Footnote text
X-X	1	6.654-067.0	Battery charger 24V	1.000	ST				LOW-MAINTENANCE
	1	6.654-179.0	Battery charger	1.000	ST			90-240V	
Position text: //1.127-361.0									
	1	6.654-102.0	Battery charger 24V	1.000	ST				MAINTENANCE-FREE
X-X	2	6.654-227.0	Battery charger maintenance free 24V - R	1.000	ST				ONLY FOR BATTERIES
X-X	2	6.654-094.0	Battery charger maintenance free 24V	1.000	ST				
Position text: //1.127-131/ -231.0 / -331.0 / -431.0									
X-X	3	6.654-093.0	Drive battery 12V 70AH	2.000	ST				MAINTENANCE-FREE
X-X	3	6.654-264.0	Drive battery maintenance free 80Ah	2.000	ST			80Ah / "HOPPECKE"	MAINTENANCE-FREE
X	3	6.654-097.0	Battery low-maintenance	2.000	ST				LOW-MAINTENANCE
	4	7.306-114.0	Cylinder head screw M 8x40-A2-70 ISO 47	2.000	ST				STAINLESS STEEL CO
Position text: //1.127-332/ -432.0									
X-X	4	7.306-043.0	Cylinder head screw M8x30 -8.8-A2E ISO	2.000	ST		<13376		VERSION 1
	4	7.306-075.0	Cylinder head screw M 8x 40-8.8-A2E ISO	2.000	ST	>13377			VERSION 2+3
	5	7.312-277.0	Washer 8-200HV-A2E ISO7093-1	4.000	ST				
X-X	5	7.312-289.0	Washer 8 -A2 ISO 7093-1	4.000	ST				STAINLESS STEEL CO
Position text: //1.127-332/ -432.0									
	6	5.110-777.0	Sleeve	2.000	ST	>13377			VERSION 2+3
	6	5.110-966.0	Sleeve	2.000	ST				STAINLESS STEEL CO
Position text: //1.127-332/ -432.0									
X	6	5.110-680.0	Sleeve	2.000	ST		<13376		VERSION 1
X-X	7	7.311-004.0	Hexagon nut M8 -8-A3E ISO 4032	2.000	ST				
X-X	8	6.343-122.0	Lock washer	2.000	ST		<13376		VERSION 1
	9	5.105-372.0	Axle	1.000	ST				STAINLESS STEEL CO
Position text: //1.127-332/ -432.0									

30 Chassis (0.162-974.0)

ET/VT (spare/wear parts)	Pos	Material #	Name	Qty.	Unit	from ser.nr.	up to ser.nr.	var. information	Footnote text
	9	5.105-261.0	Axle	1.000	ST		<13376		VERSION 1
	10	4.044-002.0	Holder	1.000	ST		<13376		VERSION 1
	11	4.058-125.0	Carrier suction bar	1.000	ST				STAINLESS STEEL CO
Position text: //1.127-332/ -432.0									
X-X	11	4.058-087.0	Carrier suction bar	1.000	ST				
	12	7.312-008.0	Washer 12-200HV-A3E ISO 7090	1.000	ST				VERSION 1
X-X	13	7.311-429.0	Hexagon nut M12-04-A2E ISO 10511	1.000	ST				VERSION 1
X-X	14	5.115-255.0	Washer	2.000	ST				
X-X	15	6.435-324.0	Wheel D.200	2.000	ST				VERSION 1
X-X	16	6.435-301.0	Wheel cab neutrally	2.000	ST				
X-X	17	7.343-007.0	Locking ring 20x1,2-FST-RF DIN 471	2.000	ST				VERSION 1
X-X	18	7.312-017.0	Washer 8-A2 ISO 7089	1.000	ST				
	19	5.017-687.0	Angle	1.000	ST				STAINLESS STEEL CO
Position text: //1.127-332/ -432.0									
	19	5.017-052.0	Angle	1.000	ST				
Position text: //1.127-131/ -231/ -331/ -431.0									
	20	7.306-090.0	Screw M6x16 -8.8-R3R (In6Rd)	2.000	ST				
X-X	20	7.306-193.0	Screw M6x16 -A2-70 (In6Rd)	2.000	ST				STAINLESS STEEL CO
Position text: //1.127-332/ -432.0									
X-X	21	7.312-003.0	Washer 6 -200HV-A3E ISO 7090	8.000	ST				
X-X	22	7.311-067.0	Hexagon nut M 6-A2-70 ISO 4032	2.000	ST				
X-X	23	5.332-206.0	Helical spring	1.000	ST				
	23	5.332-495.0	Helical spring	1.000	ST				STAINLESS STEEL CO
Position text: //1.127-332/ -432.0									
X-X	25	7.306-089.0	Screw M6x12 -8.8-R2R (In6Rd)	4.000	ST				
Position text: //1.127-131/ -231/ -331/ -431.0									

30 Chassis (0.162-974.0)

ET/VT (spare/wear parts)	Pos	Material #	Name	Qty.	Unit	from ser.nr.	up to ser.nr.	var. information	Footnote text
X	28	6.368-295.0	Protecting cap	2.000	ST				
X	30	7.312-057.0	Washer 16 -A2 ISO 7090	1.000	ST				VERSION 2
	31	7.343-206.0	Lock washer 12-2.1030 DIN 6799	1.000	ST				VERSION 2
	32	5.017-085.0	Angle	1.000	ST				
Position text: //1.127-161/ -261/ -361/ -461/ -681.0									
X	33	7.311-000.0	Hexagon nut M3 -8-A2E ISO 4032	2.000	ST				
X-X	34	7.312-043.0	Washer 3-A2 ISO 7089	2.000	ST				
X-X	35	7.306-055.0	Screw M3x20 -8.8-R2R (In6Rd)	2.000	ST				
	36	6.647-990.0	Cable battery complete	1.000	ST				
X-X	37	6.646-140.0	Plug two-pole 50A-	1.000	ST				
	38	6.654-106.0	Cap	1.000	ST				
Position text: //1.127-131/ -231/ -331/ -431.0									
X-X	39	6.654-104.0	Battery clamp positiv	1.000	ST				
Position text: //1.127-131/ -231/ -331/ -431.0									
X-X	40	6.654-105.0	Battery clamp negative	1.000	ST				
Position text: //1.127-131/ -231/ -331/ -431.0									
X-X	41	6.647-738.0	Cable battery	1.000	ST				
X-X	42	5.115-493.0	Washer	1.000	ST				VERSION 3
	43	7.343-021.0	Locking ring 16x1-FST-BR DIN 471	1.000	ST				STAINLESS STEEL CO
Position text: //1.127-332/ -432.0									
X-X	43	7.343-005.0	Locking ring 16x1-FST-PHR DIN 471	1.000	ST				VERSION 3
	44	2.850-322.0	Individual parts	1.000	ST				
X-X	45	5.115-608.0	Washer	2.000	ST				
X-X	46	6.435-356.0	Wheel D200	2.000	ST			VERS 2/3	OIL RESISTANT
X-X	47	7.343-004.0	Locking ring 15x1-FST-PHR DIN 471	2.000	ST				

30 Chassis (0.162-974.0)

ET/VT (spare/wear parts)	Pos	Material #	Name	Qty.	Unit	from ser.nr.	up to ser.nr.	var. information	Footnote text
	48	4.044-010.0	Holder	1.000	ST	>13377			
	48	4.044-044.0	Holder	1.000	ST				STAINLESS STEEL CO
Position text: //1.127-332/ -432.0									
X	49	6.648-263.0	Connection cable complete TORN *	1.000	ST				
Position text: //1.127-681/ -881.0									
	50	5.039-041.0	Tub battery	1.000	ST				
Position text: //1.127-681.0									

40 Switch box BAT (0.161-445.0)

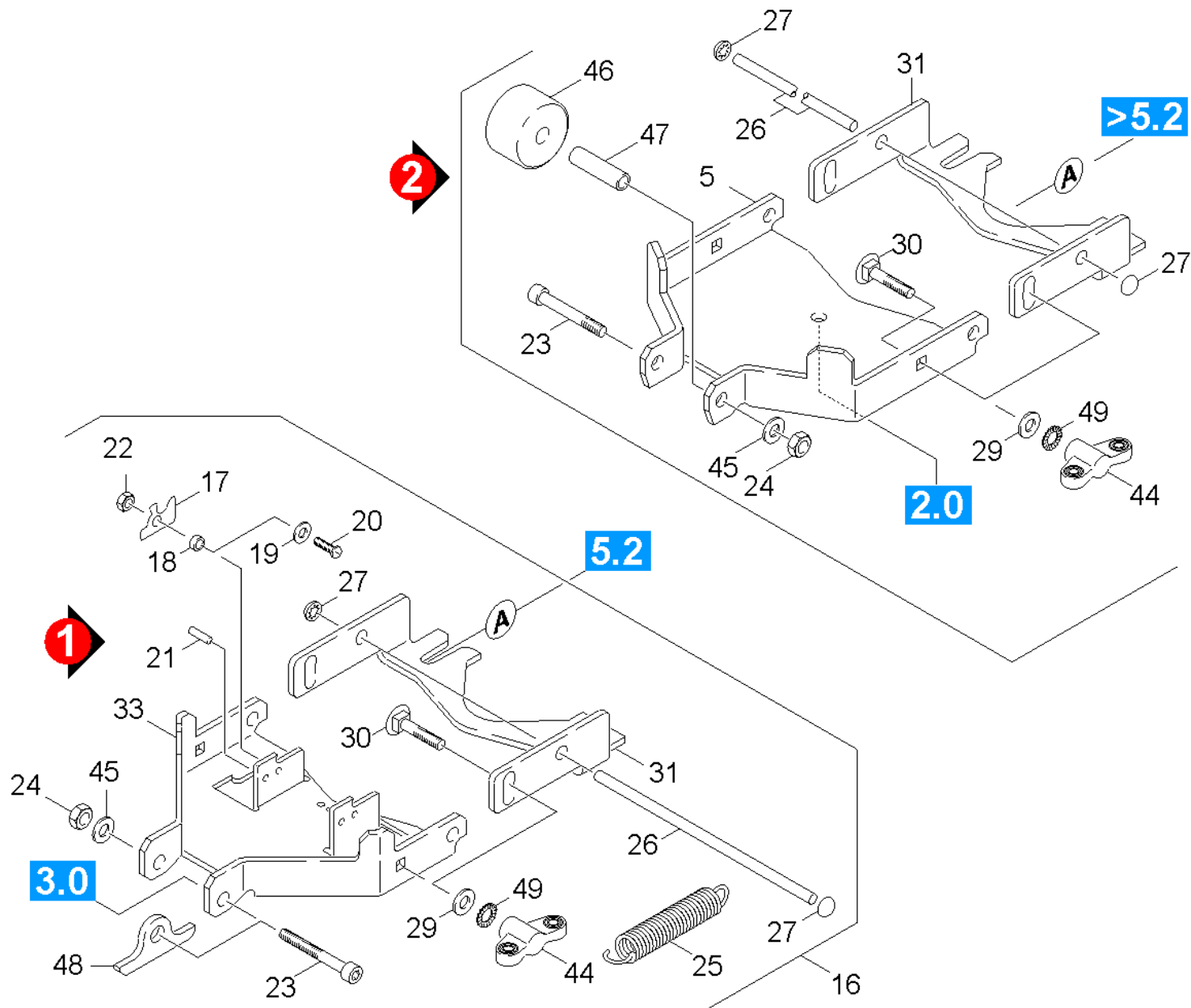
ET/VT (spare/wear parts)	Pos	Material #	Name	Qty.	Unit	from ser.nr.	up to ser.nr.
	1	6.601-301.0	Chest and mounting plate LAENGE 630 MM	1.000	ST	0000000000	0000000000
X-X	2	6.633-389.0	Power relay	1.000	ST	0000000000	0000000000
	3	7.306-077.0	Screw M5x16 -8.8-R2R (In6Rd)	3.000	ST	0000000000	0000000000
	4	7.311-003.0	Hexagon nut M6 -8-A2E ISO 4032	6.000	ST	0000000000	0000000000
X-X	5	7.306-118.0	Screw M 6x35 -8.8-R3R (In6Rd)	2.000	ST	0000000000	0000000000
	6	6.303-262.0	Oval head screw 2,9X 16	4.000	ST	0000000000	0000000000
	7	6.643-687.0	Strip terminal four-pole	1.000	ST	0000000000	0000000000
X-X	8	7.311-002.0	Hexagon nut M5 -8-A2E ISO 4032	3.000	ST	0000000000	0000000000
	9	6.643-686.0	Strip terminal six-pole	1.000	ST	0000000000	0000000000
X	10	6.644-276.0	Plate	1.000	ST	0000000000	0000000000
	11	7.311-001.0	Hexagon nut M4 -8-A2E ISO 4032	6.000	ST	0000000000	0000000000
	12	7.306-058.0	Screw M 4X 12- 8.8-R2R K-IN6RD	6.000	ST	0000000000	0000000000
X-X	13	6.644-275.0	Fuse holder	1.000	ST	0000000000	0000000000
X-X	14	2.883-854.0	Spare part set	1.000	ST	0000000000	0000000000
X	17	6.644-302.0	Fuse holder	2.000	ST	0000000000	0000000000
X-X	18	6.641-368.0	Locknut PG21-PA DIN 46320	1.000	ST	0000000000	0000000000
	19	7.777-999.0	Stockpiling discontinued	1.000	ST	0000000000	0000000000
X-X	20	6.641-357.0	Cable gland PG11	1.000	ST	0000000000	0000000000
X	21	6.641-367.0	Locknut PG11	1.000	ST	0000000000	0000000000
X	22	6.641-355.0	Cable gland PG9	1.000	ST	0000000000	0000000000
	23	6.641-366.0	Locknut PG 9	1.000	ST	0000000000	0000000000
X-X	24	7.312-003.0	Washer 6 -200HV-A3E ISO 7090	4.000	ST	0000000000	0000000000
X	25	7.312-167.0	Toothed lock washer A6,4-FSt-A3E DIN 67	2.000	ST	0000000000	0000000000
X-X	26	7.312-278.0	Washer 5-200HV-A2E ISO7093-1	1.000	ST	0000000000	0000000000
	28	7.306-119.0	Cylinder head screw M8x12 -A2-70 ISO 47	3.000	ST	0000000000	0000000000

40 Switch box BAT (0.161-445.0)

ET/VT (spare/wear parts)	Pos	Material #	Name	Qty.	Unit	from ser.nr.	up to ser.nr.
	29	5.044-095.0	Holder storage cabinet	1.000	ST	0000000000	0000000000
X-X	30	7.303-104.0	Screw 5x16 -A2-70 (IN6RD)	1.000	ST	0000000000	0000000000
	31	6.373-670.0	Pipe clamp	1.000	ST	0000000000	0000000000
X	32	6.633-235.0	Relay 24 V	1.000	ST	0000000000	0000000000

50 Suction mechanism (0.163-494.0)

Pos	Material #	Name	Qty.	Unit	from ser.nr.	up to ser.nr.	Footnote text
51	0.163-497.0	Bracket suction bar	1.000	ST	0000000000	0000000000	
52	0.163-495.0	Suction bar	1.000	ST	0000000000	0000000000	VERSION 1
53	0.163-496.0	Suction bar	1.000	ST	0000000000	0000000000	VERSION 2
54	0.165-441.0	Suction bar	1.000	ST			VERSION 3



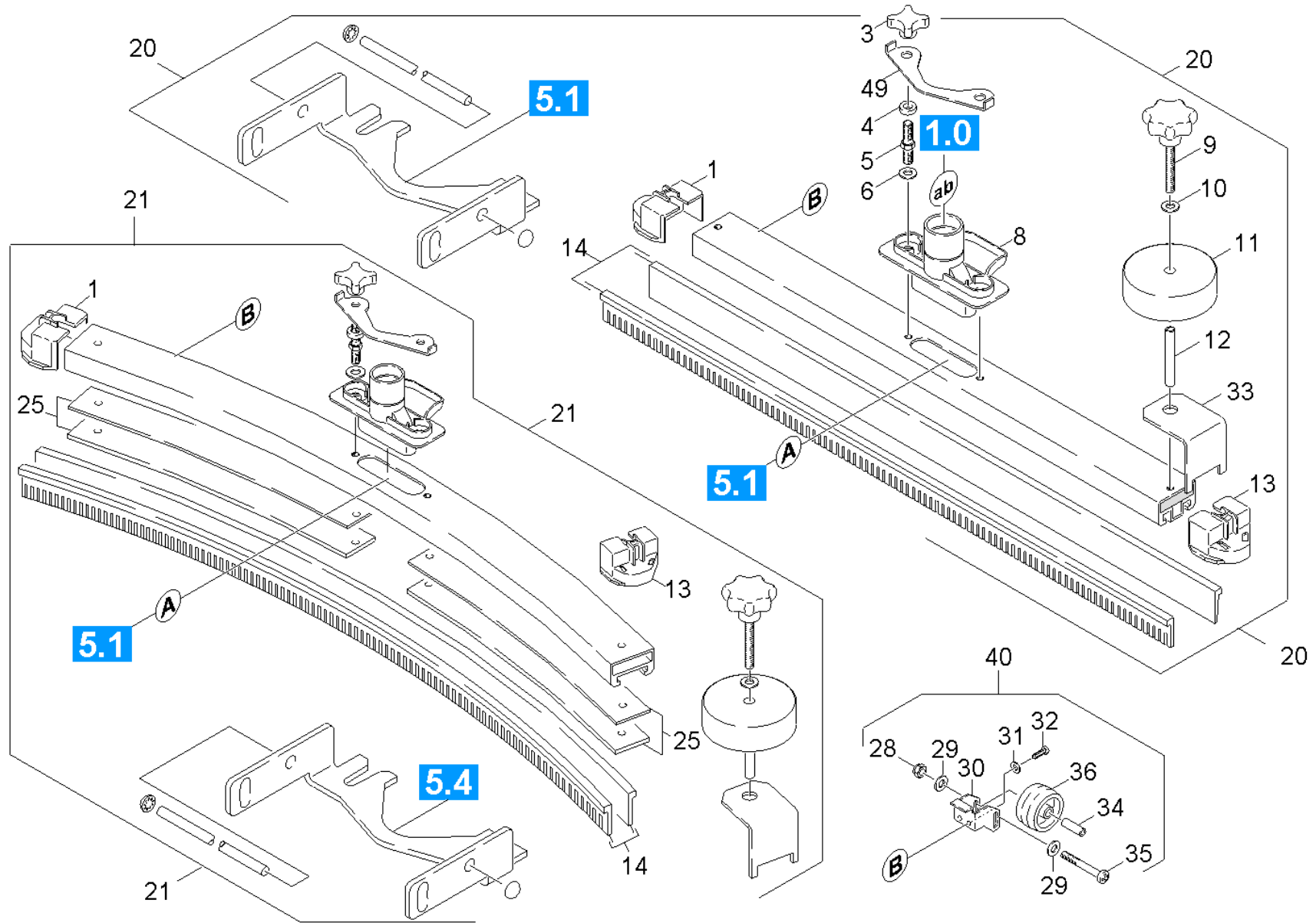
51 Bracket suction bar (0.163-497.0)

ET/VT (spare/wear parts)	Pos	Material #	Name	Qty.	Unit	from ser.nr.	up to ser.nr.	Footnote text
	5	5.044-379.0	Holder suction bar	1.000	ST	0000035012	0000000000	VERSION 2
	5	5.044-621.0	Holder suction bar	1.000	ST	0000000000	0000000000	STAINLESS STEEL CONSTRUCTION
Position text: / 1.127-332.0 / -432.0								
	16	4.777-033.0	Suction bar suspension only for replacem	1.000	ST	0000000000	0000035011	
	17	5.031-493.0	Moulded part CHH	1.000	ST	0000000000	0000035011	
	18	5.110-687.0	Sleeve	1.000	ST	0000000000	0000035011	
	19	7.312-067.0	Washer 4-A2 ISO 7089	1.000	ST	0000000000	0000035011	
X-X	20	7.306-206.0	Screw M4x10 -A2-70 (In6Rd)	1.000	ST	0000000000	0000035011	
X-X	21	7.314-949.0	Spring pin 4x14-1.4310 ISO 8752	1.000	ST	0000000000	0000035011	
X-X	22	7.311-064.0	Hexagon nut M 4-A2-70 ISO 4032	1.000	ST	0000000000	0000035011	
	23	7.306-151.0	Cylinder head screw M8x65 -8.8-A2E ISO4	1.000	ST	0000000000	0000000000	
	23	7.304-264.0	Hexagonal head screw M 8x70-A4-70 ISO 4	1.000	ST	0000000000	0000000000	STAINLESS STEEL CONSTRUCTION
Position text: / 1.127-332.0 / -432.0								
X-X	24	7.311-427.0	Hexagon nut M8 -04-A2E ISO 10511	1.000	ST	0000000000	0000000000	
X-X	25	6.330-011.0	Extension spring	1.000	ST	0000000000	0000035011	
X-X	26	5.107-202.0	Bar	1.000	ST	0000000000	0000000000	
X	27	6.343-132.0	Lock washer 8	2.000	ST	0000000000	0000000000	
X-X	29	7.312-292.0	Washer 6 -A2 ISO 7093-1	2.000	ST	0000000000	0000000000	
X-X	30	7.303-139.0	Saucer-head screw M6x20 -A2 DIN 603	2.000	ST	0000000000	0000000000	
X-X	31	5.048-234.0	Rocker suction bar	1.000	ST	0000000000	0000000000	STAINLESS STEEL CONSTRUCTION
Position text: / 1.127-332.0 / -432.0								
X-X	31	5.048-234.0	Rocker suction bar	1.000	ST	0000000000	0000000000	
	33	5.044-162.0	Holder suction bar	1.000	ST	0000000000	0000035011	VERSION 1
X-X	44	6.310-129.0	Wing nut M 6	2.000	ST	0000035012	0000000000	
X-X	45	7.312-017.0	Washer 8-A2 ISO 7089	1.000	ST	0000035012	0000000000	

51 Bracket suction bar (0.163-497.0)

ET/VT (spare/wear parts)	Pos	Material #	Name	Qty.	Unit	from ser.nr.	up to ser.nr.	Footnote text
X-X	46	5.435-004.0	Roller D40	1.000	ST	0000035012	0000000000	
X-X	47	5.112-633.0	Bush	1.000	ST	0000035012	0000000000	
	48	5.031-834.0	Moulded part only for replacement	1.000	ST	0000000000	0000035011	
X-X	49	7.312-020.0	Serrated lock washer A6,4-1.4310 DIN679	2.000	ST	0000000000	0000000000	

52 Suction bar (0.163-495.0)

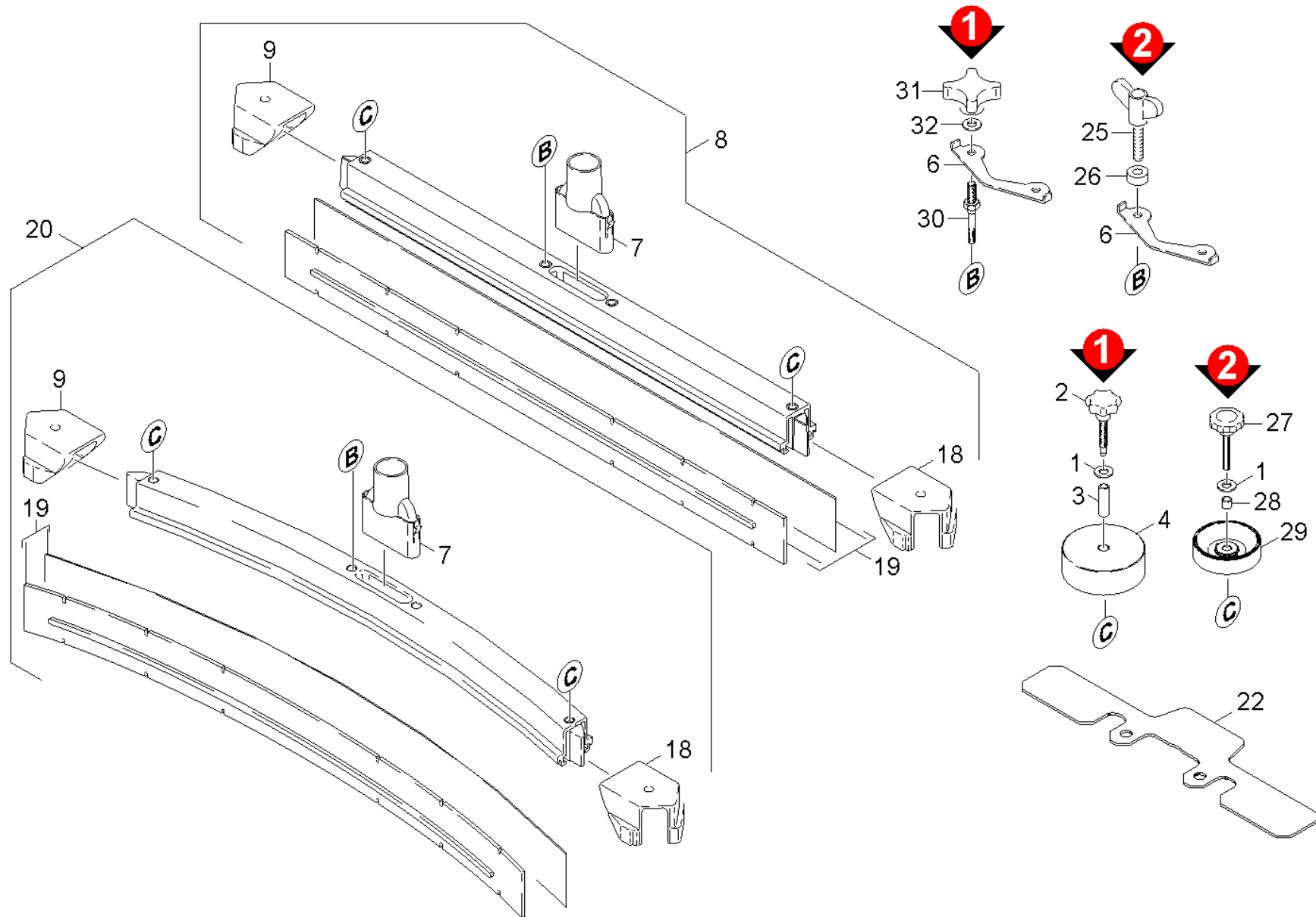


52 Suction bar (0.163-495.0)

ET/VT (spare/wear parts)	Pos	Material #	Name	Qty.	Unit	from ser.nr.	up to ser.nr.	Footnote text
X-X	1	5.031-482.0	End piece right	2.000	ST	0000000000	0000000000	
X-X	3	6.321-133.0	Star handle	2.000	ST	0000000000	0000000000	
X-X	4	7.312-080.0	Washer 10-C -100HV-tZn DIN 7989-1	2.000	ST	0000000000	0000000000	
X-X	5	5.308-057.0	Threaded bolt	2.000	ST	0000000000	0000000000	
	6	7.312-277.0	Washer 8-200HV-A2E ISO7093-1	2.000	ST	0000000000	0000000000	
X-X	8	5.031-464.0	Suction nipple	1.000	ST	0000000000	0000000000	
X-X	9	6.321-243.0	Star grip stainless steel D50x48	2.000	ST	0000000000	0000000000	
X-X	10	7.312-004.0	Washer 8 -200HV-A3E ISO 7090	2.000	ST	0000000000	0000000000	
X-X	11	5.515-096.0	Roller	2.000	ST	0000000000	0000000000	
X-X	12	5.029-469.0	Tube	2.000	ST	0000000000	0000000000	
X-X	13	5.031-465.0	End piece left	1.000	ST	0000000000	0000000000	
X-X	14	6.273-185.0	Rubber lip set	1.000	ZSA	0000000000	0000000000	STANDARD
X-X	14	6.273-168.0	Rubber lip set oil resistant	1.000	ZSA	0000000000	0000000000	OIL RESISTANT
	20	7.777-999.0	Stockpiling discontinued	1.000	ST	0000000000	0000000000	
	21	7.777-999.0	Stockpiling discontinued	1.000	ST	0000000000	0000000000	
	25	5.401-249.0	Insert curved	1.000	ST	0000000000	0000000000	
X-X	28	7.311-422.0	Hexagon nut M 6-1.4305 ISO 10511	1.000	ST	0000000000	0000000000	
X-X	29	7.312-026.0	Washer 6 -A2 ISO 7090	2.000	ST	0000000000	0000000000	
	30	5.044-304.0	Holder roller	2.000	ST	0000000000	0000000000	
X-X	31	7.312-058.0	Washer 5 -A2 ISO 7090	2.000	ST	0000000000	0000000000	
X-X	32	7.303-037.0	Screw M5x10 -St-P2R (In6Rd)	2.000	ST	0000000000	0000000000	
X-X	33	5.017-136.0	Angle	2.000	ST	0000000000	0000000000	
X-X	34	5.105-245.0	Axle	1.000	ST	0000000000	0000000000	
X-X	35	7.306-199.0	Screw M 6x50-A2-70 (IN6RD)	1.000	ST	0000000000	0000000000	
X-X	36	6.435-401.0	Wheel D54	1.000	ST	0000000000	0000000000	

52 Suction bar (0.163-495.0)

ET/VT (spare/wear parts)	Pos	Material #	Name	Qty.	Unit	from ser.nr.	up to ser.nr.	Footnote text
X-X	40	2.639-561.0	Add-on kit support wheels suction bar	1.000	ST	0000000000	0000000000	
X-X	49	5.007-217.0	Plate	1.000	ST	0000000000	0000000000	

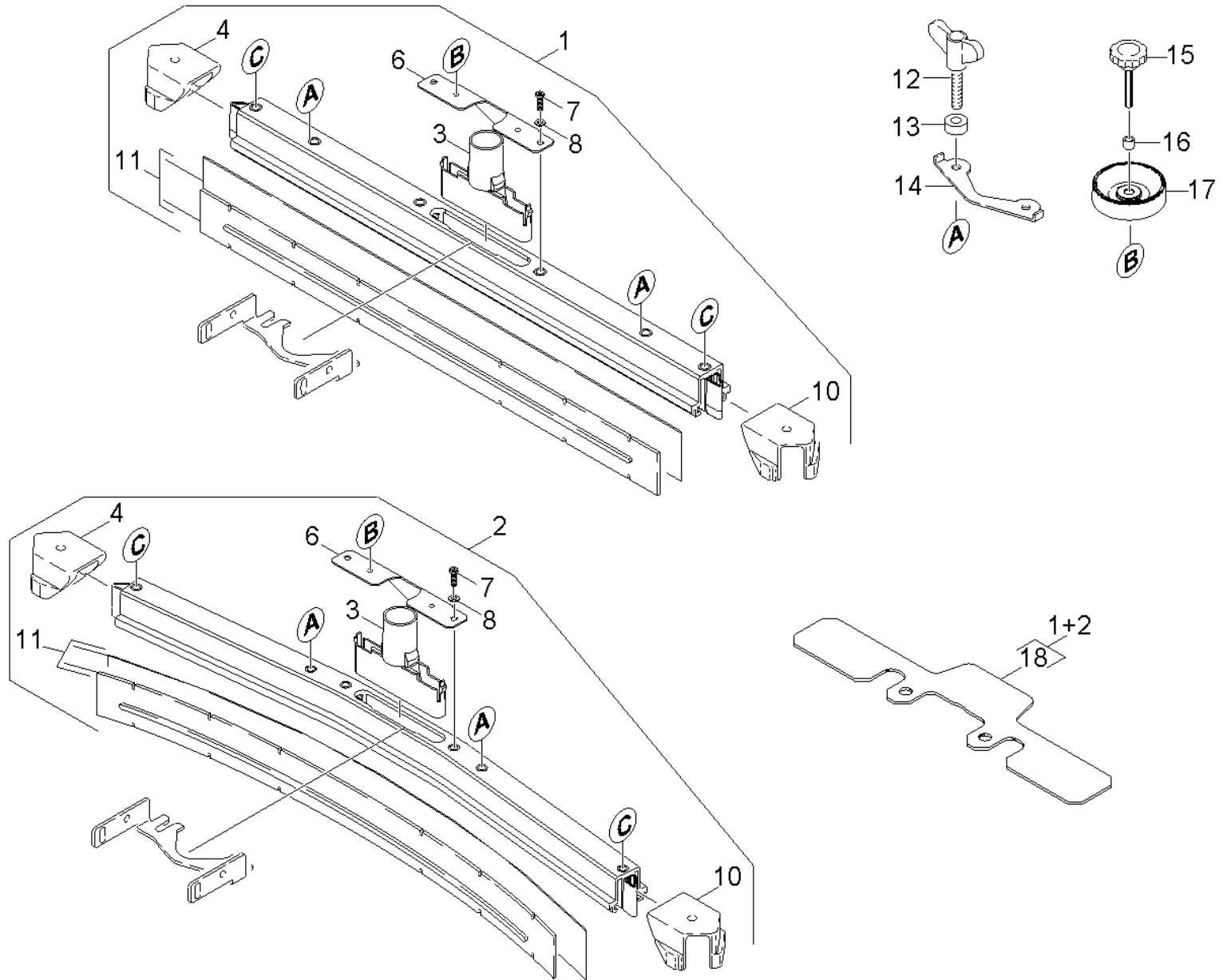


53 Suction bar (0.163-496.0)

ET/VT (spare/wear parts)	Pos	Material #	Name	Qty.	Unit	from ser.nr.	up to ser.nr.	var. information	Footnote text
X-X	1	7.312-017.0	Washer 8-A2 ISO 7089	3.000	ST	0000000000	0000000000		STAINLESS STEEL CONSTR
Position text: / 1.127-332.0 / -432.0									
X-X	1	7.312-004.0	Washer 8 -200HV-A3E ISO 7090	3.000	ST	0000000000	0000000000		
X-X	2	6.321-243.0	Star grip stainless steel D50x48	2.000	ST	0000000000	0000000000	VERSION 1	
X-X	2	6.321-170.0	Star grip M8X61 - VA	2.000	ST	0000000000	0000000000	VERSION 1	STAINLESS STEEL CONSTR
Position text: / 1.127-332.0 / -432.0									
X	3	5.094-099.0	Tube	2.000	ST	0000000000	0000000000	VERSION 1	STAINLESS STEEL CONSTR
Position text: / 1.127-332.0 / -432.0									
X-X	3	5.094-050.0	Tube	2.000	ST	0000000000	0000000000	VERSION 1	
X-X	4	5.515-096.0	Roller	2.000	ST	0000000000	0000000000	VERSION 1	
X-X	6	5.007-217.0	Plate	1.000	ST	0000000000	0000000000		
	6	5.007-619.0	Plate suction bar	1.000	ST	0000000000	0000000000		STAINLESS STEEL CONSTR
X-X	7	5.031-989.0	Suction nipple	1.000	ST			L = 90mm	
	7	5.033-669.0	Suction nipple	1.000	ST	0000000000	0000000000	L = 150mm	
	8	4.777-062.0	Suction bar straight Edelstahl	1.000	ST	0000000000	0000000000		STAINLESS STEEL CONSTR
Position text: / 1.127-332.0 / -432.0									
X-X	8	4.777-306.0	Suction bar straight 850 AB oLR	1.000	ST	0000000000	0000000000		SRAIGHT DESIGN
X-X	9	5.031-991.0	End piece right	1.000	ST	0000000000	0000000000		
X-X	18	5.031-990.0	End piece left	1.000	ST	0000000000	0000000000		
X-X	19	6.273-207.0	Rubber lip set oil resistant BR-BD530,55	1.000	ZSA	0000000000	0000000000		OIL RESISTANT
X-X	19	6.273-213.0	Rubber lip set standard	1.000	ZSA	0000000000	0000000000		STANDARD
X-X	19	6.273-229.0	Rubber lip set anti stripe oil resistant	1.000	ST	0000000000	0000000000		ANTI-STRIP, OIL RESISTANT
X-X	20	4.777-316.0	Suction bar curved 850 AB oLR	1.000	ST	0000000000	0000000000		CURVED DESIGN
	22	5.128-339.0	Additional weight suction bar	1.000	ST	0000000000	0000000000		
X-X	25	5.305-296.0	Wing screw M8x40 VA	2.000	ST			VERSION 2	STAINLESS STEEL CONSTR

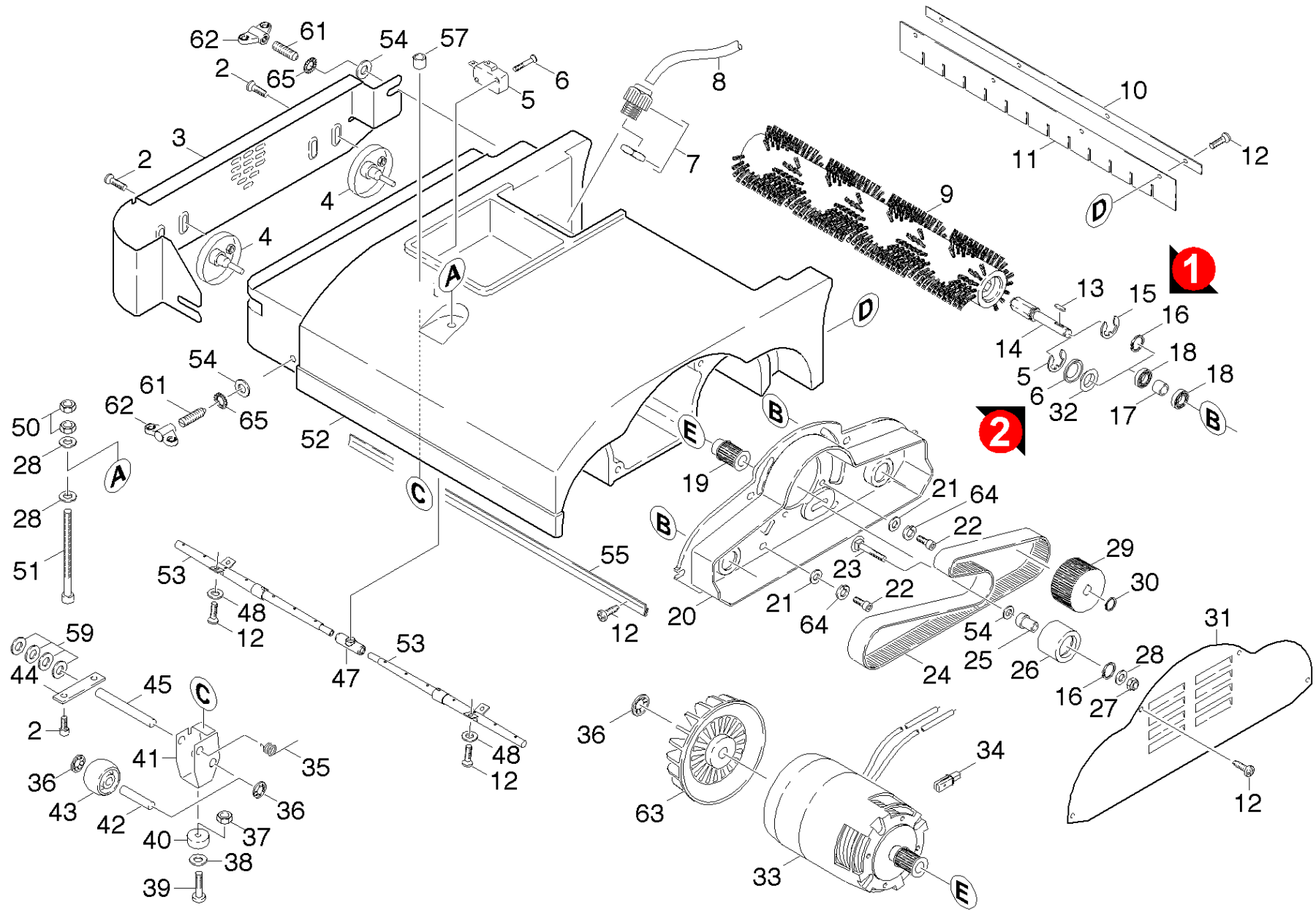
53 Suction bar (0.163-496.0)

ET/VT (spare/wear parts)	Pos	Material #	Name	Qty.	Unit	from ser.nr.	up to ser.nr.	var. information	Footnote text
X	25	5.305-286.0	Wing screw M8x	2.000	ST	0000000000	0000000000	VERSION 2	
X-X	26	5.112-748.0	Sleeve	2.000	ST	0000000000	0000000000		VERSION 2
X-X	26	5.112-810.0	Sleeve VA	2.000	ST			VERSION 2	STAINLESS STEEL CONSTR
X-X	27	6.321-239.0	Star grip VA Ø50x43	2.000	ST			VERSION 2	STAINLESS STEEL CONSTR
X-X	28	5.094-231.0	Sleeve suction bar in VA	2.000	ST			VERSION 2	STAINLESS STEEL CONSTR
X-X	29	5.515-267.0	Deflector roll suction bar	2.000	ST			VERSION 2	
	30	5.308-064.0	Threaded bolt	2.000	ST	0000000000	0000000000		VERSION 1
X-X	31	6.321-133.0	Star handle	2.000	ST	0000000000	0000000000		VERSION 1
X-X	32	7.312-066.0	Washer 10 -A2 ISO 7090	2.000	ST	0000000000	0000000000		VERSION 1



54 Suction bar (0.165-441.0)

ET/VT (spare/wear parts)	Pos	Material #	Name	Qty.	Unit	Footnote text
X-X	1	4.777-406.0	Suction bar straight 850mm	1.000	ST	
X-X	2	4.777-416.0	Suction bar curved 850mm	1.000	ST	
X-X	3	5.033-601.0	Suction nipple	1.000	ST	
X-X	4	5.031-991.0	End piece right	1.000	ST	
X	6	5.100-559.0	Suction bar support plate	1.000	ST	
X-X	7	7.306-142.0	Cylinder head screw M 8x25-A4-70 ISO 47	1.000	ST	
X-X	8	7.312-017.0	Washer 8-A2 ISO 7089	1.000	ST	
X-X	10	5.031-990.0	End piece left	1.000	ST	
X-X	11	6.273-290.0	BLADES FOR TEXTURED FLOORS	1.000	ST	CLOSED, OIL RESISTANT
X-X	11	6.273-207.0	Rubber lip set oil resistant BR-BD530,55	1.000	ZSA	OIL RESISTANT
X-X	11	6.273-213.0	Rubber lip set standard	1.000	ZSA	STANDARD
X-X	11	6.273-229.0	Rubber lip set anti stripe oil resistant	1.000	ST	ANTI-STRIP, OIL RESISTANT
X-X	12	5.305-296.0	Wing screw M8x40 VA	2.000	ST	
X-X	13	5.112-810.0	Sleeve VA	2.000	ST	
X-X	14	5.007-217.0	Plate	1.000	ST	
X-X	15	6.321-239.0	Star grip VA Ø50x43	2.000	ST	
X-X	16	5.094-231.0	Sleeve suction bar in VA	2.000	ST	
X-X	17	5.515-346.0	Deflector roll suction bar D120	2.000	ST	
	18	5.128-339.0	Additional weight suction bar	1.000	ST	



60 Power brush (0.163-216.0)

ET/VT (spare/wear parts)	Pos	Material #	Name	Qty.	Unit	from ser.nr.	up to ser.nr.	var. information	Footnote text
X-X	2	7.306-191.0	Screw M6x10 -A2-70 (In6Rd)	8.000	ST	0000000000	0000000000		
	3	4.044-064.0	Holder-up	1.000	ST	0000000000	0000000000		
X-X	4	4.038-493.0	Sheet metal component	2.000	ST	0000000000	0000000000		
X-X	5	6.343-250.0	Locking ring 28x1,2 JL	2.000	ST	0000066578	0000000000		VERSION 2
X-X	6	5.114-521.0	Spacer ring	2.000	ST	0000066578	0000000000		VERSION 2
X-X	7	6.647-714.0	Cable gland M20x1,5	1.000	ST	0000000000	0000000000		
	8	6.642-011.0	Insulating hose 10	1.000	M				TO ORDER AS CUT GOOD
X-X	9	5.762-209.0	Roller brush orange (old colour red)	2.000	ST				
Position text: / 1.127-231.0 / -261.0 / -431.0/ -461.0									
X-X	9	5.762-172.0	Roller brush white (old colour black)	2.000	ST				
Position text: / 1.127-131.0 / -161.0 / -331.0/ -361.0 / -681.0									
X-X	9	5.762-208.0	Roller brush red (old colour white)	2.000	ST				STANDARD
Position text: / 1.127-231.0 / -261.0 / -431.0/ -461.0									
	9	5.762-263.0	Roller brush black (old colour grey)	2.000	ST	0000000000	0000000000		
Position text: / 1.127-231.0 / -261.0 / -431.0/ -461.0									
X-X	9	5.762-210.0	Roller brush green (old colour grey)	2.000	ST				
Position text: / 1.127-231.0 / -261.0 / -431.0/ -461.0									
X-X	9	5.762-169.0	Roller brush red (old colour white)	2.000	ST				STANDARD
Position text: / 1.127-131.0 / -161.0 / -331.0/ -361.0 / -681.0									
X-X	9	5.762-170.0	Roller brush orange (old colour red)	2.000	ST				
Position text: / 1.127-131.0 / -161.0 / -331.0/ -361.0 / -681.0									
X-X	9	5.762-211.0	Roller brush white (old colour black)	2.000	ST				
Position text: / 1.127-231.0 / -261.0 / -431.0/ -461.0									
X-X	9	5.762-264.0	Roller brush black (old colour grey)	2.000	ST	0000000000	0000000000		
Position text: / 1.127-131.0 / -161.0 / -331.0/ -361.0 / -681.0									

60 Power brush (0.163-216.0)

ET/VT (spare/wear parts)	Pos	Material #	Name	Qty.	Unit	from ser.nr.	up to ser.nr.	var. information	Footnote text
X-X	9	5.762-171.0	Roller brush green (old colour grey)	2.000	ST				
Position text: / 1.127-131.0 / -161.0 / -331.0/ -361.0 / -681.0									
	10	5.003-984.0	Plate	1.000	ST	0000000000	0000000000		
Position text: / 1.127-231.0 / -261.0 / -431.0/ -461.0									
X	10	5.003-196.0	Plate	1.000	ST	0000000000	0000000000		
Position text: / 1.127-131.0 / -161.0 / -331.0/ -361.0 / -681.0									
X-X	11	5.190-057.0	Strip	1.000	ST	0000000000	0000000000		
Position text: / 1.127-131.0 / -161.0 / -331.0/ -361.0 / -681.0									
X-X	11	5.190-093.0	Strip XL	1.000	ST	0000000000	0000000000		
Position text: / 1.127-231.0 / -261.0 / -431.0/ -461.0									
X-X	12	7.303-104.0	Screw 5x16 -A2-70 (IN6RD)	14.000	ST	0000000000	0000000000		
X-X	13	7.318-095.0	Parallel key 4x4x16-1.4301 DIN 6885	2.000	ST	0000000000	0000000000		STAINLESS STEEL CON
Position text: / 1.127-332.0 / -432.0									
X-X	13	7.318-007.0	Parallel key 4x4x16-C45R DIN 6885	2.000	ST	0000000000	0000000000		
X-X	14	5.100-191.0	Driveshaft BR 550/530	2.000	ST	0000000000	0000066577		
X-X	14	5.103-038.0	Shaft hexagon BR 530	2.000	ST	0000066578	0000000000		
X-X	15	7.343-304.0	Lock washer 15 -A2 DIN 6799	2.000	ST	0000000000	0000066577		VERSION 1
X-X	16	7.343-151.0	Locking ring 28x1,2-FST-RF DIN 472	3.000	ST	0000000000	0000066577		VERSION 1
X-X	17	5.116-101.0	Sleeve	2.000	ST	0000066578	0000000000		
X-X	17	5.110-322.0	Sleeve	2.000	ST	0000000000	0000066577		
X-X	18	6.401-363.0	Ball bearing	4.000	ST	0000000000	0000000000		
	19	5.625-316.0	Belt pulley 24Z	1.000	ST	0000000000	0000000000		
	19	5.625-416.0	Belt pulley 24Z 3M 1.4305	1.000	ST	0000000000	0000000000		STAINLESS STEEL CON
Position text: / 1.127-332.0 / -432.0									
X-X	20	5.044-075.0	Retainer plate transmission	1.000	ST	0000000000	0000000000		

60 Power brush (0.163-216.0)

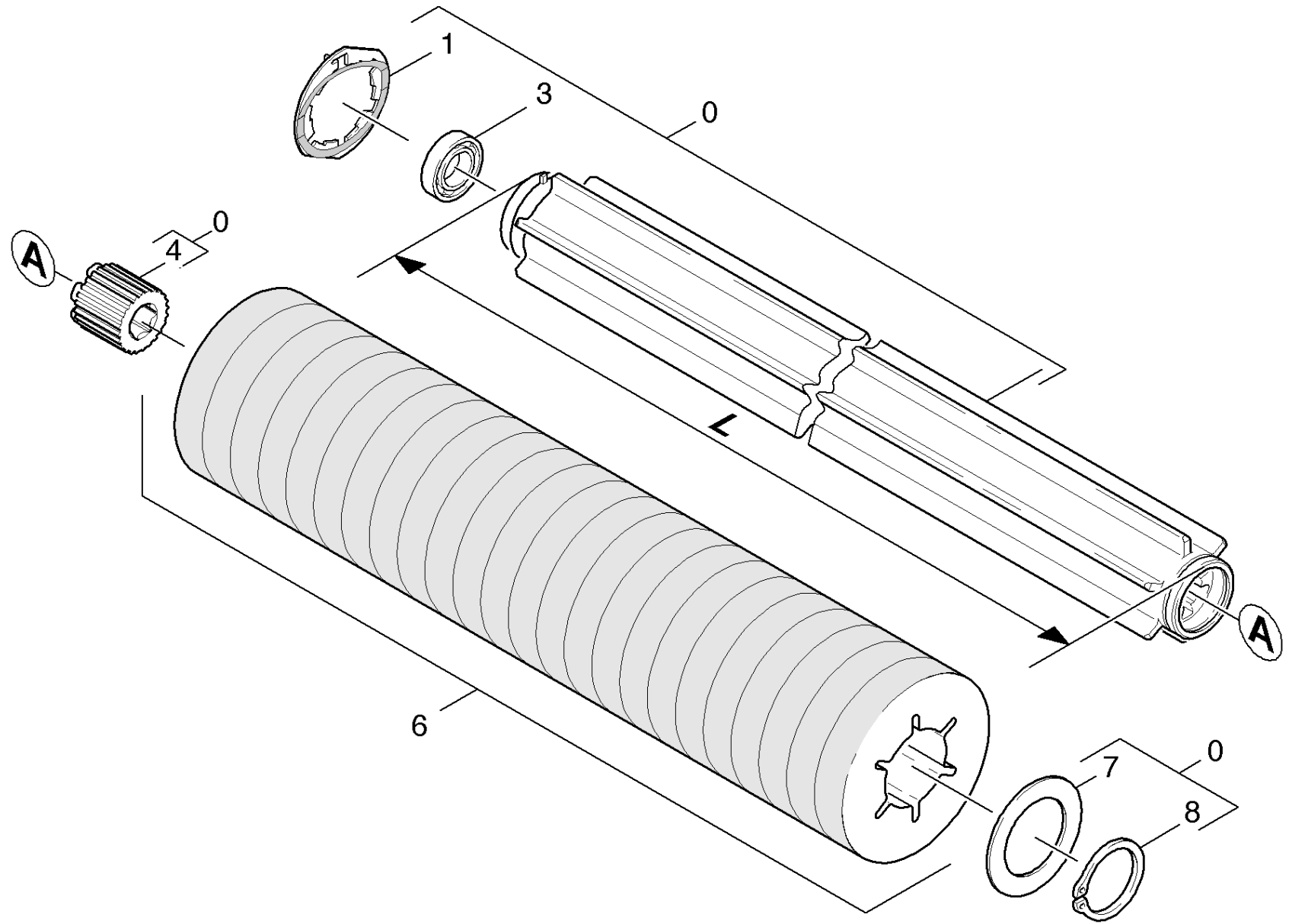
ET/VT (spare/wear parts)	Pos	Material #	Name	Qty.	Unit	from ser.nr.	up to ser.nr.	var. information	Footnote text
X-X	21	7.312-292.0	Washer 6 -A2 ISO 7093-1	10.000	ST	0000000000	0000000000		
X-X	22	7.306-031.0	Screw M 6x16-A2-70 DIN 7984	10.000	ST	0000000000	0000000000		
X	23	7.303-186.0	Saucer-head screw M8x40 -St-A0P DIN 603	1.000	ST	0000000000	0000000000		
X-X	24	6.348-376.0	Toothed belt HTD 843-3M-25-CXPIII	1.000	ST	0000000000	0000000000		
X	25	5.110-678.0	Sleeve	1.000	ST	0000000000	0000000000		
	25	5.110-919.0	Sleeve	1.000	ST	0000000000	0000000000		STAINLESS STEEL CON
Position text: / 1.127-332.0 / -432.0									
X-X	26	4.250-083.0	Tension roller D = 33,5	1.000	ST	0000000000	0000000000		
X-X	27	7.311-427.0	Hexagon nut M8 -04-A2E ISO 10511	1.000	ST	0000000000	0000000000		
X-X	27	7.311-432.0	Hexagon nut M 8-1.4305 ISO 10511	1.000	ST	0000000000	0000000000		STAINLESS STEEL CON
Position text: / 1.127-332.0 / -432.0									
X-X	28	7.312-017.0	Washer 8-A2 ISO 7089	3.000	ST	0000000000	0000000000		
X-X	29	5.625-317.0	Belt pulley 59Z	2.000	ST	0000000000	0000000000		
	29	5.625-417.0	Belt pulley 59Z 3M 1.4305	2.000	ST	0000000000	0000000000		STAINLESS STEEL CON
Position text: / 1.127-332.0 / -432.0									
X-X	30	7.343-003.0	Locking ring 12x1-Rf-St DIN 471	2.000	ST	0000000000	0000000000		
X-X	31	5.003-959.0	Cover plate	1.000	ST	0000000000	0000000000		
	31	5.006-708.0	Cover plate	1.000	ST	0000000000	0000000000		STAINLESS STEEL CON
Position text: / 1.127-332.0 / -432.0									
X-X	32	6.401-385.0	Ring Nilos D 28	2.000	ST	0000066578	0000000000		VERSION 2
X-X	33	4.623-428.0	Motor complete only for replacement 24V	1.000	ST	0000000000	0000000000		
X-X	34	6.610-239.0	Carbon brush set ATAS	1.000	ST	0000000000	0000000000	ATAS	
X	34	6.610-216.0	Carbon brush set	1.000	ZSA	0000000000	0000000000	AMER	
X-X	35	5.335-035.0	Spiral spring	1.000	ST	0000000000	0000000000		
X-X	36	6.343-149.0	Quick-fastener	2.000	ST	0000000000	0000000000		

60 Power brush (0.163-216.0)

ET/VT (spare/wear parts)	Pos	Material #	Name	Qty.	Unit	from ser.nr.	up to ser.nr.	var. information	Footnote text
X-X	37	7.311-422.0	Hexagon nut M 6-1.4305 ISO 10511	1.000	ST	0000000000	0000000000		
X-X	38	7.312-073.0	Washer 8 -CuZn ISO 7092	1.000	ST	0000000000	0000000000		
X-X	39	7.306-193.0	Screw M6x16 -A2-70 (In6Rd)	1.000	ST	0000000000	0000000000		
X-X	40	5.031-519.0	Stand foot	1.000	ST	0000000000	0000000000		
	41	5.052-043.0	Stand	1.000	ST	0000000000	0000000000		
X-X	42	5.105-266.0	Axle wheel	1.000	ST	0000000000	0000000000		
X-X	43	5.435-004.0	Roller D40	1.000	ST	0000000000	0000000000		
X-X	44	5.004-835.0	Strap	2.000	ST	0000000000	0000000000		
	45	5.105-260.0	Axle	1.000	ST	0000000000	0000000000		
X-X	47	5.431-005.0	Pipe connection	1.000	ST	0000000000	0000000000		
X-X	48	7.312-282.0	Washer 5 -A2 ISO 7093-1	4.000	ST	0000000000	0000000000		
X-X	50	7.311-068.0	Hexagon nut M 8-A2-70 ISO 4032	3.000	ST	0000000000	0000000000		
X-X	51	7.304-033.0	Hexagonal head screw M 8X100-A4-70 ISO	1.000	ST	0000000000	0000000000		
	52	5.060-691.0	Brush housing	1.000	ST	0000000000	0000000000		
Position text: / 1.127-231.0 / -261.0 / -431.0/ -461.0									
	52	5.060-666.0	Brush housing	1.000	ST	0000000000	0000000000		
Position text: / 1.127-131.0 / -161.0 / -331.0/ -361.0 / -681.0									
X-X	53	5.029-317.0	Tube water	2.000	ST	0000000000	0000000000		
Position text: / 1.127-431.0 / -461.0									
X-X	53	5.029-386.0	Tube water	2.000	ST	0000000000	0000000000		
Position text: / 1.127-331.0 / -361.0 / -681.0									
X-X	54	7.312-289.0	Washer 8 -A2 ISO 7093-1	3.000	ST	0000000000	0000000000		
X-X	55	5.048-187.0	Sheet metal component	1.000	ST	0000000000	0000000000		
Position text: / 1.127-131.0 / -161.0 / -331.0/ -361.0 / -681.0									
	55	5.048-362.0	Sheet metal component	1.000	ST	0000000000	0000000000		
Position text: / 1.127-231.0 / -261.0 / -431.0/ -461.0									

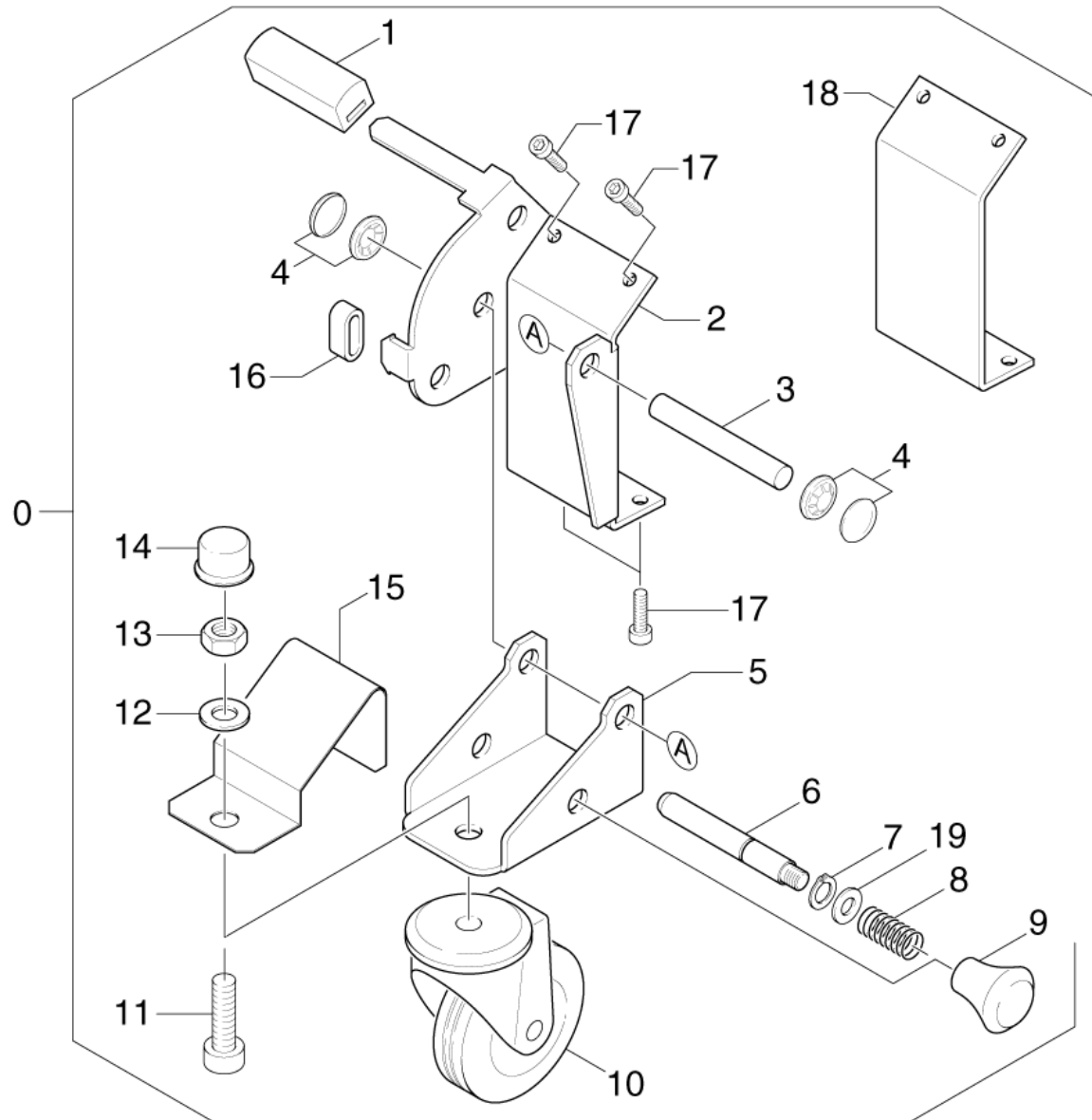
60 Power brush (0.163-216.0)

ET/VT (spare/wear parts)	Pos	Material #	Name	Qty.	Unit	from ser.nr.	up to ser.nr.	var. information	Footnote text
	57	6.347-093.0	Sleeve 8x1	1.000	ST	0000000000	0000000000		
X-X	59	7.312-074.0	Washer 10 -CuZn ISO 7092	4.000	ST	0000000000	0000000000		
X-X	61	7.307-356.0	Threaded pin M 8 x 30-A2-21H ISO 4029	2.000	ST	0000035012	0000000000		
X-X	62	6.310-128.0	Wing nut M 8	2.000	ST	0000000000	0000000000		
X-X	63	6.613-025.0	Blower wheel	1.000	ST	0000035012	0000000000		
X-X	64	7.313-018.0	Spring washer B 6-1.4310 DIN 127	10.000	ST	0000000000	0000000000		
X-X	65	7.312-022.0	Serrated lock washer A8,4-1.4310 DIN679	2.000	ST	0000000000	0000000000		



70 Pad roll (0.125-147.0)

ET/VT (spare/wear parts)	Pos	Material #	Name	Qty.	Unit	from ser.nr.	up to ser.nr.	var. information
X-X	0	4.762-184.0	Roll pad BR 550 / BR 530	1.000	ST	0000000000	0000000000	L = 461 MM
Position text: / 1.127-331.0								
	0	4.762-214.0	Roll pad	1.000	ST	0000000000	0000000000	L = 530 MM
Position text: / 1.127-431.0								
	1	4.115-003.0	Washer closure	1.000	ST	0000000000	0000000000	
X-X	3	7.401-169.0	Ball bearing 6201-2RS-WAELZLAGST DIN 625	1.000	ST	0000000000	0000000000	
	4	5.112-719.0	Bush hexagon 17mm	1.000	ST			
X-X	6	6.369-733.0	Pad green with sleeve	1.000	ZSA	0000000000	0000000000	
Position text: //1.127-431.0/-432.0/-461.0								
	6	6.369-732.0	Pad yellow with sleeve	1.000	ZSA	0000000000	0000000000	
Position text: //1.127-431.0/-432.0/-461.0								
X-X	6	6.369-734.0	Pad red with sleeve	1.000	ZSA	0000000000	0000000000	
Position text: //1.127-431.0/-432.0/-461.0								
	6	6.369-735.0	Pad white with sleeve	1.000	ZSA	0000000000	0000000000	
Position text: //1.127-431.0/-432.0/-461.0								
X-X	6	6.369-730.0	Pad red with sleeve	1.000	ZSA	0000000000	0000000000	
Position text: //1.127-331.0/-332.0/-361.0/-681.0								
	6	6.369-731.0	Pad white with sleeve	1.000	ZSA	0000000000	0000000000	
Position text: //1.127-331.0/-332.0/-361.0/-681.0								
	6	6.369-728.0	Pad yellow with sleeve	1.000	ZSA	0000000000	0000000000	
Position text: //1.127-331.0/-332.0/-361.0/-681.0								
X-X	6	6.369-729.0	Pad green with sleeve	1.000	ZSA	0000000000	0000000000	
Position text: //1.127-331.0/-332.0/-361.0/-681.0								
	7	5.005-266.0	Ronde	1.000	ST	0000000000	0000000000	
	8	7.343-030.0	Locking ring 40x1,75-FST-RF DIN 471	1.000	ST	0000000000	0000000000	



80 Carriage (0.163-609.0)

ET/VT (spare/wear parts)	Pos	Material #	Name	Qty.	Unit	from ser.nr.	up to ser.nr.	Footnote text
X-X	0	2.639-807.0	Add-on kit carriage BR530	1.000	ST	0000000000	0000000000	
X	1	5.321-457.0	Handhold	1.000	ST	0000000000	0000000000	
	2	4.044-021.0	Holder carriage	1.000	ST	0000000000	0000000000	
	2	4.044-047.0	Holder carriage	1.000	ST	0000000000	0000000000	STAINLESS STEEL CONSTRUCTION
Position text: / 1.127-332.0 / -432.0								
X-X	3	5.105-336.0	Axle	1.000	ST	0000000000	0000000000	
X-X	4	6.343-191.0	Quick-fastener	2.000	ST	0000000000	0000000000	
X-X	5	5.044-445.0	Holder wheel	1.000	ST	0000000000	0000000000	
	5	5.044-627.0	Holder wheel	1.000	ST	0000000000	0000000000	STAINLESS STEEL CONSTRUCTION
Position text: / 1.127-332.0 / -432.0								
X-X	6	5.317-001.0	Bolt	1.000	ST	0000000000	0000000000	
	7	7.343-300.0	Lock washer 7-A2 DIN 6799	1.000	ST	0000000000	0000000000	
X-X	8	5.332-288.0	Helical spring	1.000	ST	0000000000	0000000000	
X-X	9	6.321-001.0	Button M8	1.000	ST	0000000000	0000000000	
	10	6.435-672.0	Castor D 75	1.000	ST	0000000000	0000000000	STAINLESS STEEL CONSTRUCTION
Position text: / 1.127-332.0 / -432.0								
X-X	10	6.435-061.0	Castor D 75	1.000	ST	0000000000	0000000000	
	11	7.306-234.0	Cylinder head screw M10x20-A4-70 ISO 47	1.000	ST	0000000000	0000000000	
X-X	12	7.312-066.0	Washer 10 -A2 ISO 7090	1.000	ST	0000000000	0000000000	
X-X	12	7.312-014.0	Washer 10-A4 ISO 7090	1.000	ST	0000000000	0000000000	STAINLESS STEEL CONSTRUCTION
Position text: / 1.127-332.0 / -432.0								
X-X	13	7.311-066.0	Hexagon nut M10-A2-70 ISO 4032	1.000	ST	0000000000	0000000000	
	14	6.368-354.0	Cap M 10	1.000	ST	0000000000	0000000000	
	15	5.032-345.0	Covering cap	1.000	ST	0000000000	0000000000	STAINLESS STEEL CONSTRUCTION
Position text: / 1.127-332.0 / -432.0								

80 Carriage (0.163-609.0)

ET/VT (spare/wear parts)	Pos	Material #	Name	Qty.	Unit	from ser.nr.	up to ser.nr.	Footnote text
	15	5.031-982.0	Covering cap	1.000	ST	0000000000	0000000000	
X-X	16	5.442-982.0	Piece of tube	1.000	ST	0000000000	0000000000	
X-X	17	7.303-104.0	Screw 5x16 -A2-70 (IN6RD)	1.000	ST	0000000000	0000000000	STAINLESS STEEL CONSTRUCTION
Position text: / 1.127-332.0 / -432.0								
X-X	17	7.303-107.0	Screw 5x16 -10.9-P2R (K-In6Rd)	4.000	ST	0000000000	0000000000	
	18	5.387-011.0	Template carriage	1.000	ST	0000000000	0000000000	
X-X	19	7.362-003.0	Joint ring A10x13,5 -Cu DIN 7603	1.000	ST	0000000000	0000000000	