

**Spare parts list**  
**(5.955-700.0) Spare parts list BR 400 \* UL-**

## Table of contents

---

<b>Spare parts list BR 400 * UL- (5.955-700.0)</b> .....	<b>6</b>
10 Retaining bracket and switch.....	7
11 Retaining bracket and switch.....	8
12 Retaining bracket.....	11
13 Switch box.....	13
20 Appliance top part.....	15
21 Turbine and housing.....	16
22 Individual parts.....	19
23 Individual parts FARBUMSTELLUNG.....	22
30 Appliance bottom part.....	24
31 Motor individual parts.....	25
32 Individual parts.....	27
33 Height adjustment.....	30
34 Height adjustment.....	32
35 Suction mechanism.....	34
40 Gear and brushes.....	36
41 Gear.....	37
42 Roller brush.....	39
43 Closure cap brushes.....	41
50 Pad roll.....	43
7 Ronde (5.005-266.0).....	45

Spare parts list BR 400 \* UL- (5.955-700.0)

---

Pos	Name	Qty.	Unit	from ser.nr.	up to ser.nr.
10	Retaining bracket and switch	1.000	ST	0000000000	0000000000
20	Appliance top part	1.000	ST	0000000000	0000000000
30	Appliance bottom part	1.000	ST	0000000000	0000000000
40	Gear and brushes	1.000	ST	0000000000	0000000000
50	Pad roll	1.000	ST	0000000000	0000000000

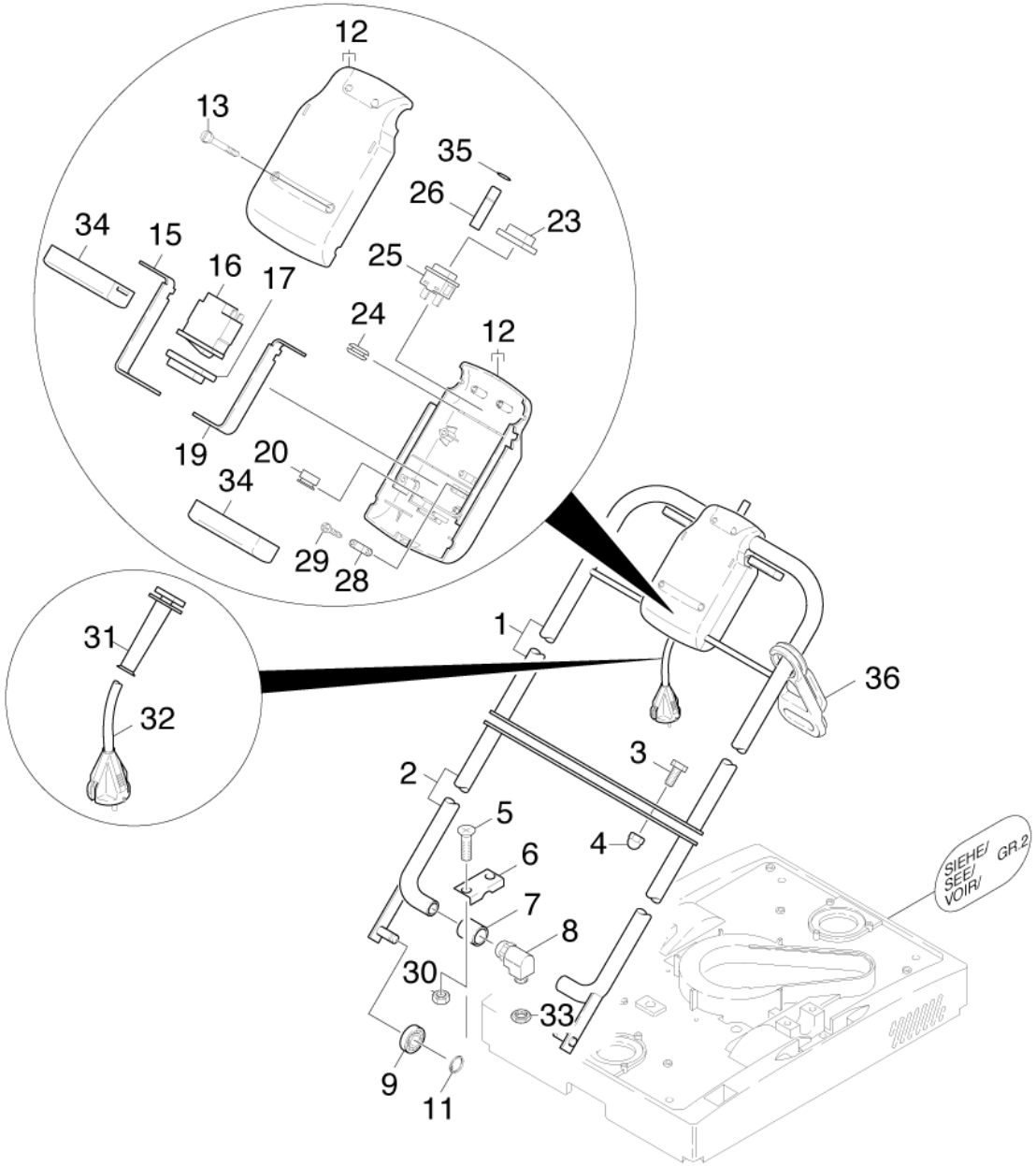
---

## 10 Retaining bracket and switch

---

Pos	Name	Qty.	Unit	from ser.nr.	up to ser.nr.
11	Retaining bracket and switch	1.000	ST	0000000000	0000016789
12	Retaining bracket	1.000	ST	0000016790	0000000000
13	Switch box	1.000	ST	0000016790	0000000000

---



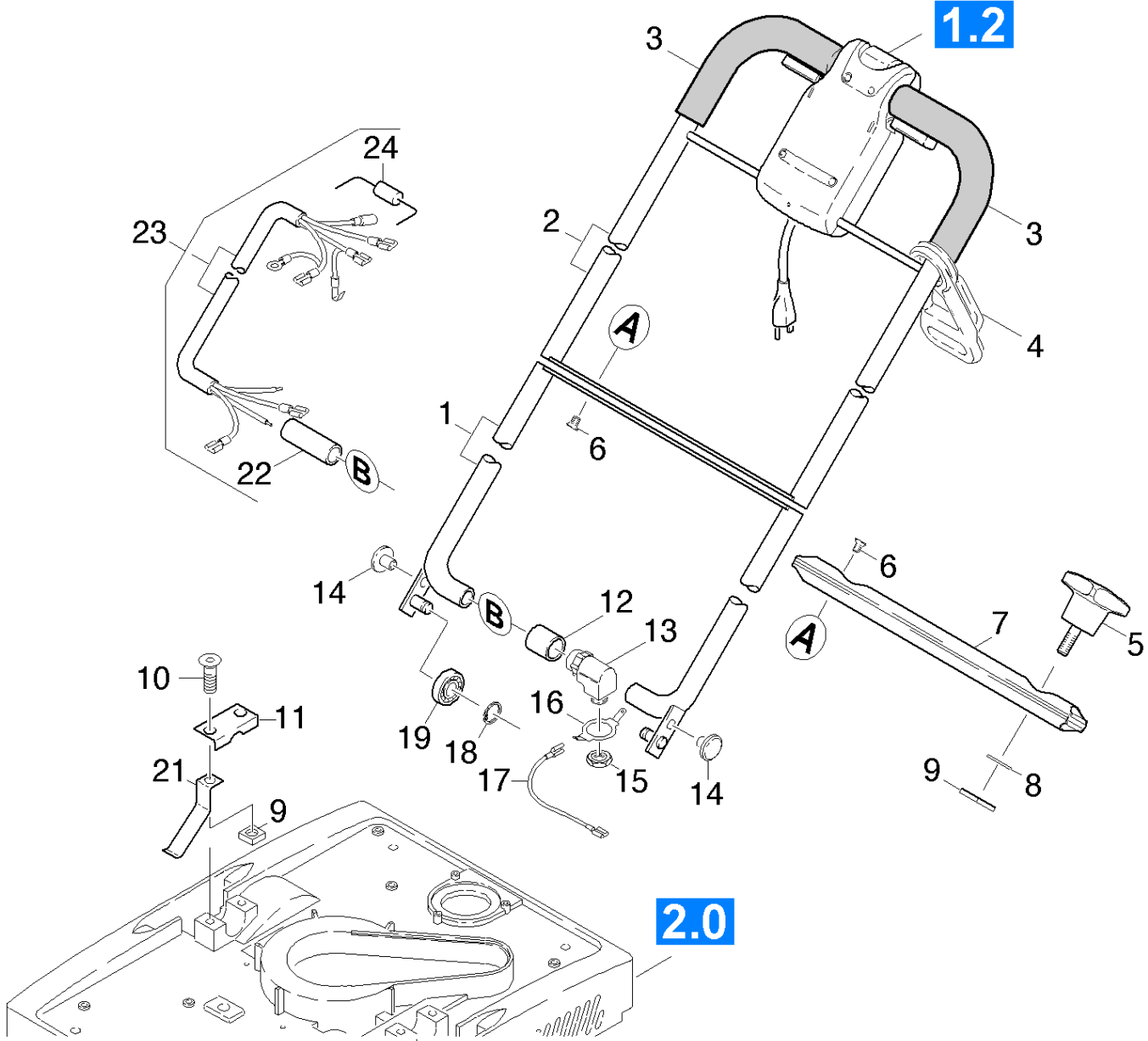
## 11 Retaining bracket and switch

Pos	Material #	Name	Qty.	Unit	from ser.nr.	up to ser.nr.
1		Stockpiling discontinued	1.000	ST	0000000000	0000000000
2	4.034-078.0	Retaining bracket complete	1.000	ST	0000000000	0000000000
3	7.304-395.0	Hexagonal head screw M8x16-8.8-A2E ISO	2.000	ST	0000000000	0000000000
4	7.311-620.0	Cap nut M8 -A2 DIN 986	2.000	ST	0000000000	0000000000
5	7.305-637.0	Countersunk screw M8x16-A2-70 ISO 10642	4.000	ST	0000000000	0000000000
6	5.001-389.0	Plate	2.000	ST	0000000000	0000000000
7	5.112-466.0	Bush	2.000	ST	0000000000	0000000000
8	6.647-344.0	Cable gland angle	1.000	ST	0000000000	0000000000
9	7.401-149.0	Ball bearing 608-2RS -Wälzl.St DIN 625	2.000	ST	0000000000	0000000000
11	7.343-300.0	Lock washer 7-A2 DIN 6799	2.000	ST	0000000000	0000000000
12	5.060-514.0	Housing	1.000	ST	0000000000	0000000000
13	7.306-337.0	Oval head screw M 4x35-A2-70 ISO 7045	4.000	ST	0000000000	0000000000
15	5.046-520.0	Sheet metal component	1.000	ST	0000000000	0000000000
16	6.631-746.0	Rocker switch	1.000	ST	0000000000	0000000000
17	6.631-760.0	Covering cap switch	1.000	ST	0000000000	0000000000
19	5.046-519.0	Sheet metal component	1.000	ST	0000000000	0000000000
20	6.647-365.0	Cable gland	2.000	ST	0000000000	0000000000
23	6.631-618.0	Cap	1.000	ST	0000000000	0000000000
24	6.647-356.0	Rubber bushing	2.000	ST	0000000000	0000000000
25	6.631-748.0	Pushbutton	1.000	ST	0000000000	0000000000
26	5.560-036.0	Slide of a press	1.000	ST	0000000000	0000000000
28	6.373-319.0	Cable clamp R 8	2.000	ST	0000000000	0000000000
29	7.303-102.0	Screw 3,5x12 -A2-70-bk (In6Rd)	4.000	ST	0000000000	0000000000
30	7.311-570.0	Square nut M8 -05-A2E DIN 557	4.000	ST	0000000000	0000000000
31	5.394-138.0	Protection part	1.000	ST	0000000000	0000000000

## 11 Retaining bracket and switch

---

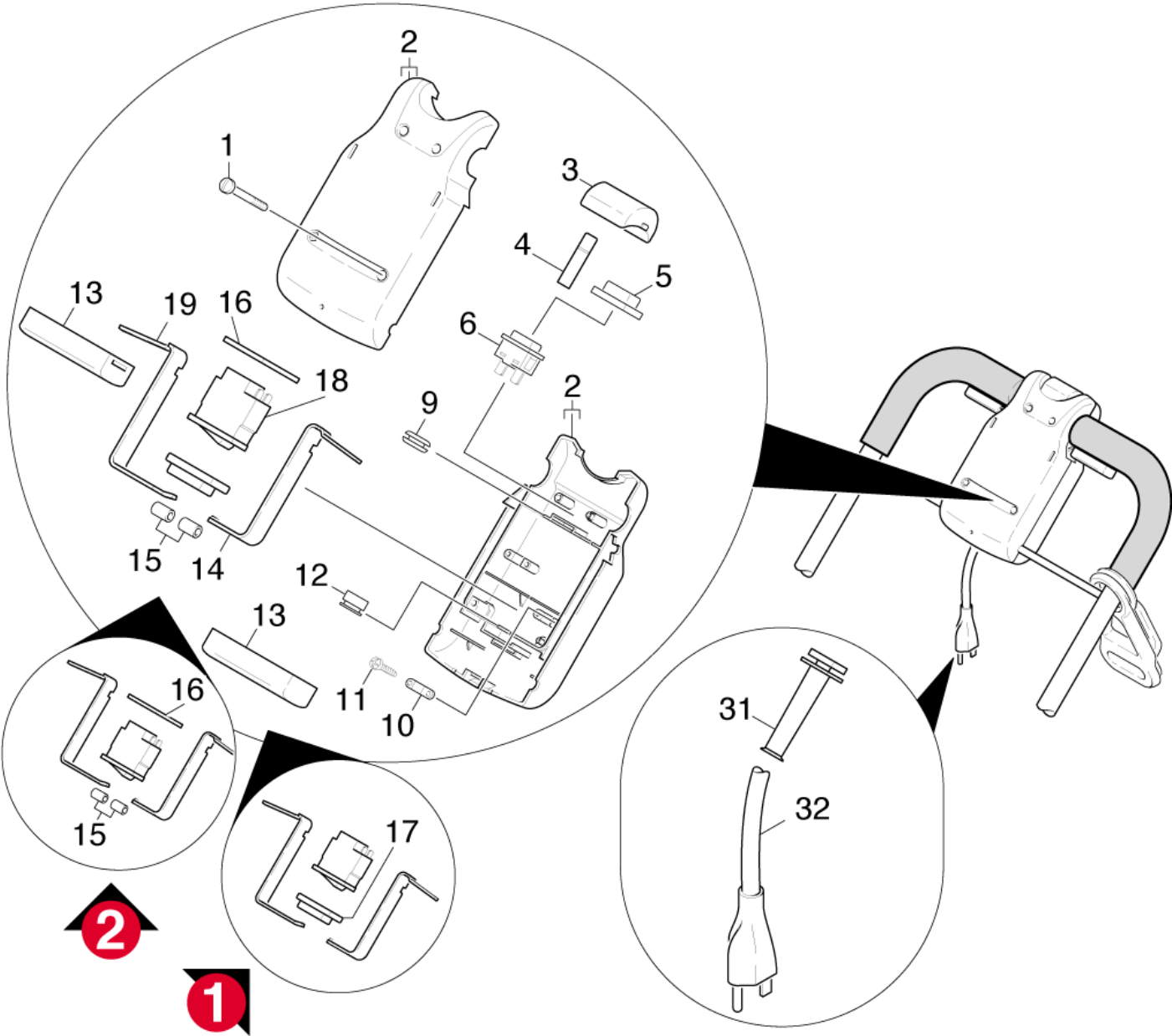
Pos	Material #	Name	Qty.	Unit	from ser.nr.	up to ser.nr.
32	6.647-512.0	Cable	1.000	ST	0000000000	0000000000
33	6.641-480.0	Locknut PG13,5	1.000	ST	0000000000	0000000000
34	5.321-457.0	Handhold	2.000	ST	0000000000	0000000000
35	7.343-303.0	Locking ring 8-A2 DIN 6799	1.000	ST	0000000000	0000000000
36	6.641-776.0	Strain relief	1.000	ST	0000000000	0000000000





## 12 Retaining bracket

Pos	Material #	Name	Qty.	Unit	from ser.nr.	up to ser.nr.	Footnote text
1	4.034-085.0	Retaining bracket bottom part complete	1.000	ST	0000000000	0000000000	
2	4.034-086.0	Retaining bracket top part complete	1.000	ST	0000000000	0000000000	
3	6.321-117.0	Handhold foamed material	2.000	ST	0000000000	0000000000	
4	6.641-776.0	Strain relief	1.000	ST	0000000000	0000000000	
5	5.321-487.0	Star handle	2.000	ST	0000000000	0000000000	
6	7.305-029.0	Countersunk screw M6x10-8.8-A2R (In6Rd)	6.000	ST	0000000000	0000000000	
7	5.501-045.0	Hinge	1.000	ST	0000000000	0000000000	
8	7.343-204.0	Lock washer 6 -CuSn8 DIN 6799	2.000	ST	0000000000	0000000000	
9	7.311-570.0	Square nut M8 -05-A2E DIN 557	6.000	ST	0000000000	0000000000	
10	7.305-637.0	Countersunk screw M8x16-A2-70 ISO 10642	4.000	ST	0000000000	0000000000	
11	5.001-389.0	Plate	2.000	ST	0000000000	0000000000	
12	5.112-466.0	Bush	2.000	ST	0000000000	0000000000	
13	6.647-716.0	Elbow screw connector cable	1.000	ST	0000020890	0000000000	
13	6.647-344.0	Cable gland angle	1.000	ST	0000000000	0000020899	
14	5.316-779.0	Bolt	2.000	ST	0000000000	0000000000	
15	6.641-480.0	Locknut PG13,5	1.000	ST	0000000000	0000000000	
16	5.004-803.0	Strap earthing	1.000	ST	0000000000	0000000000	
17	6.647-730.0	Cable green/yellow 1,0mm <sup>2</sup> x200mm	1.000	ST	0000000000	0000000000	
18	7.343-300.0	Lock washer 7-A2 DIN 6799	2.000	ST	0000000000	0000000000	
19	7.401-149.0	Ball bearing 608-2RS -Wälzl.St DIN 625	2.000	ST	0000000000	0000000000	
21	5.337-024.0	Plate spring	2.000	ST	0000000000	0000000000	
22	6.642-056.0	Insulating hose -7/16"	1.000	M	0000000000	0000000000	TO ORDER AS CUT GOODS
23	4.839-158.0	Electrical small parts	1.000	ST	0000000000	0000000000	
24	6.664-059.0	Diode Typ EM 516	1.000	ST	0000000000	0000000000	



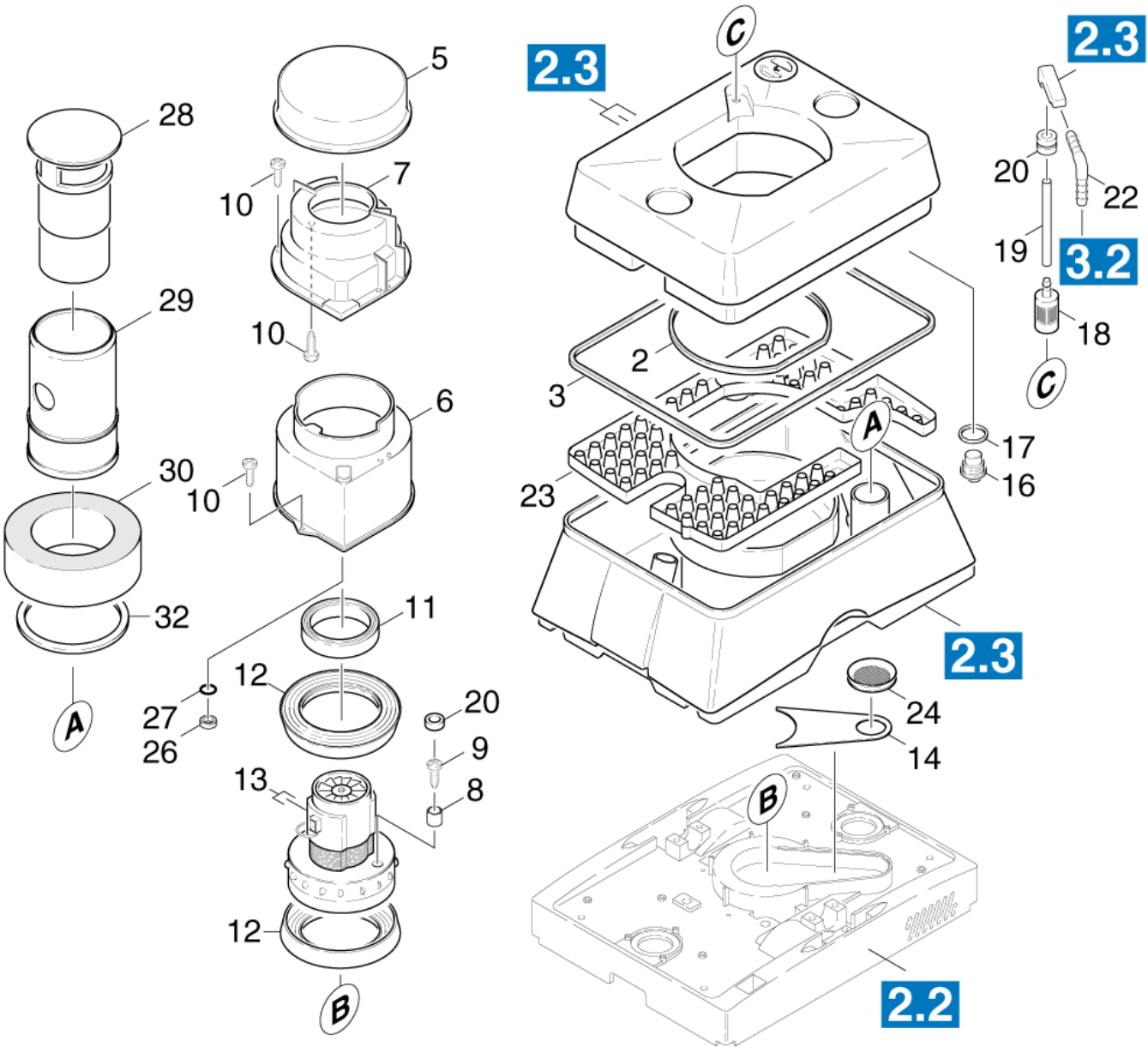
### 13 Switch box

Pos	Material #	Name	Qty.	Unit	from ser.nr.	up to ser.nr.	Footnote text
1	7.306-337.0	Oval head screw M 4x35-A2-70 ISO 7045	4.000	ST	0000000000	0000020899	
1	7.306-342.0	Oval head screw M 4x40-A2-70 ISO 7045	4.000	ST	0000020890	0000000000	
2	5.060-577.0	Housing	2.000	ST	0000000000	0000000000	
Position text: / 1.926-806.0							
2	5.060-564.0	Housing	2.000	ST	0000000000	0000000000	
3	5.324-032.0	Pushbutton covering cap	1.000	ST	0000000000	0000000000	
4	7.314-517.0	Straight grooved pin 10x45-KU ISO 8740	1.000	ST	0000000000	0000000000	
5	6.631-618.0	Cap	1.000	ST	0000000000	0000000000	
6	6.631-748.0	Pushbutton	1.000	ST	0000000000	0000000000	
9	6.647-356.0	Rubber bushing	2.000	ST	0000000000	0000000000	
10	6.373-319.0	Cable clamp R 8	2.000	ST	0000000000	0000000000	
11	7.303-102.0	Screw 3,5x12 -A2-70-bk (In6Rd)	4.000	ST	0000000000	0000000000	
12	6.647-365.0	Cable gland	2.000	ST	0000000000	0000000000	
13	5.321-457.0	Handhold	2.000	ST	0000000000	0000000000	
14	5.046-519.0	Sheet metal component	1.000	ST	0000000000	0000000000	
15	6.389-362.0	Piece of tube DN 4	2.000	ST	0000000000	0000000000	PAY ATTENTION TO VERSION
16	5.050-083.0	Frame	1.000	ST	0000000000	0000000000	PAY ATTENTION TO VERSION
17	6.631-760.0	Covering cap switch	1.000	ST	0000000000	0000000000	PAY ATTENTION TO VERSION
18	6.631-746.0	Rocker switch	1.000	ST	0000000000	0000000000	
19	5.046-520.0	Sheet metal component	1.000	ST	0000000000	0000000000	
31	5.394-138.0	Protection part	1.000	ST	0000000000	0000000000	
32	6.647-512.0	Cable	1.000	ST	0000000000	0000000000	

## 20 Appliance top part

---

Pos	Name	Qty.	Unit	from ser.nr.	up to ser.nr.
21	Turbine and housing	1.000	ST	0000000000	0000000000
22	Individual parts	1.000	ST	0000000000	0000000000
23	Individual parts FARBUMSTELLUNG	1.000	ST	0000000000	0000000000



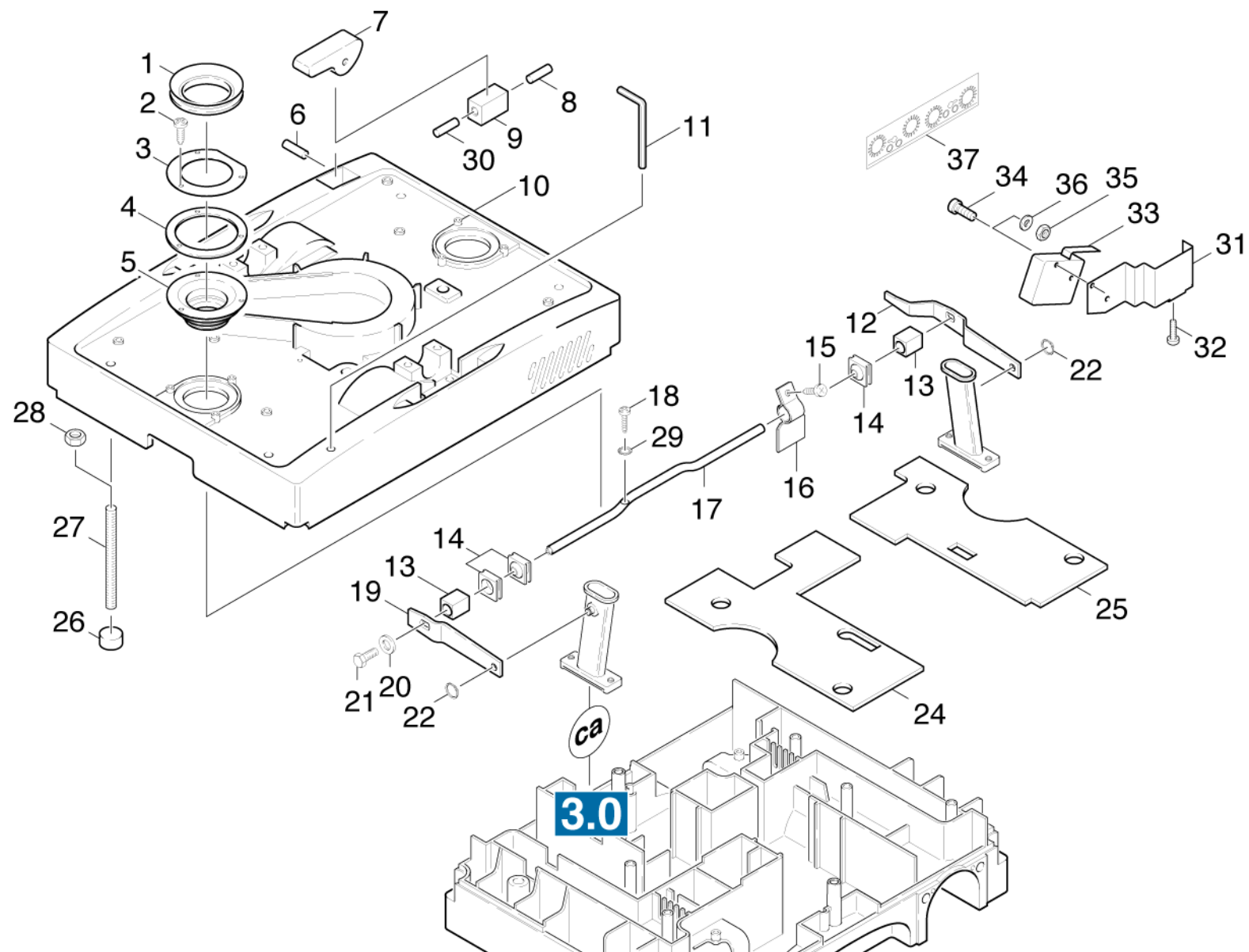
## 21 Turbine and housing

Pos	Material #	Name	Qty.	Unit	from ser.nr.	up to ser.nr.
2	5.365-177.0	Profile gasket	1.000	ST	0000000000	0000000000
3	5.365-178.0	Profile gasket	1.000	ST	0000000000	0000000000
5	5.066-579.0	Cover	1.000	ST	0000000000	0000000000
6	5.060-518.0	Housing	1.000	ST	0000000000	0000000000
6	5.060-448.0	Housing turbine	1.000	ST	0000000000	0000000000
Position text: / 1.926-806.0						
7	5.122-204.0	Flange	1.000	ST	0000000000	0000000000
8	5.110-177.0	Sleeve	1.000	ST	0000000000	0000000000
10	7.303-104.0	Screw 5x16 -A2-70 (IN6RD)	10.000	ST	0000000000	0000000000
11	6.273-060.0	Profile gasket D78	1.000	ST	0000000000	0000000000
12	5.363-321.0	Joint ring	1.000	ST	0000000000	0000000000
13	6.490-095.0	Vacuum motor	1.000	ST	0000000000	0000000000
14	5.001-294.0	Plate	1.000	ST	0000000000	0000000000
16	5.411-111.0	Screw plug	1.000	ST	0000000000	0000000000
17	6.362-358.0	Seal	1.000	ST	0000000000	0000000000
18	5.731-652.0	Filter with weight	1.000	ST	0000000000	0000025102
18	6.414-277.0	Filter	1.000	ST	0000000000	0000025101
19	5.029-201.0	Tube	1.000	ST	0000000000	0000000000
20	6.641-405.0	Wire protecting sleeve	2.000	ST	0000000000	0000000000
22	6.386-575.0	Elbow screw connector	1.000	ST	0000000000	0000000000
23	5.031-066.0	Sloshing baffle	1.000	ST	0000000000	0000000000
24	5.363-344.0	Joint ring	1.000	ST	0000000000	0000000000
25	5.379-007.0	Rubber ring	1.000	ST	0000000000	0000000000
26	5.363-345.0	Joint ring	1.000	ST	0000000000	0000000000
27	7.362-005.0	Joint ring A14x18 -Cu DIN 7603	1.000	ST	0000000000	0000000000

## 21 Turbine and housing

---

Pos	Material #	Name	Qty.	Unit	from ser.nr.	up to ser.nr.
28	4.692-025.0	Air circulation	1.000	ST	0000000000	0000000000
29	5.028-754.0	Tube	1.000	ST	0000000000	0000000000
30	5.585-020.0	Float	1.000	ST	0000000000	0000000000
32	5.115-705.0	Washer	1.000	ST	0000000000	0000000000



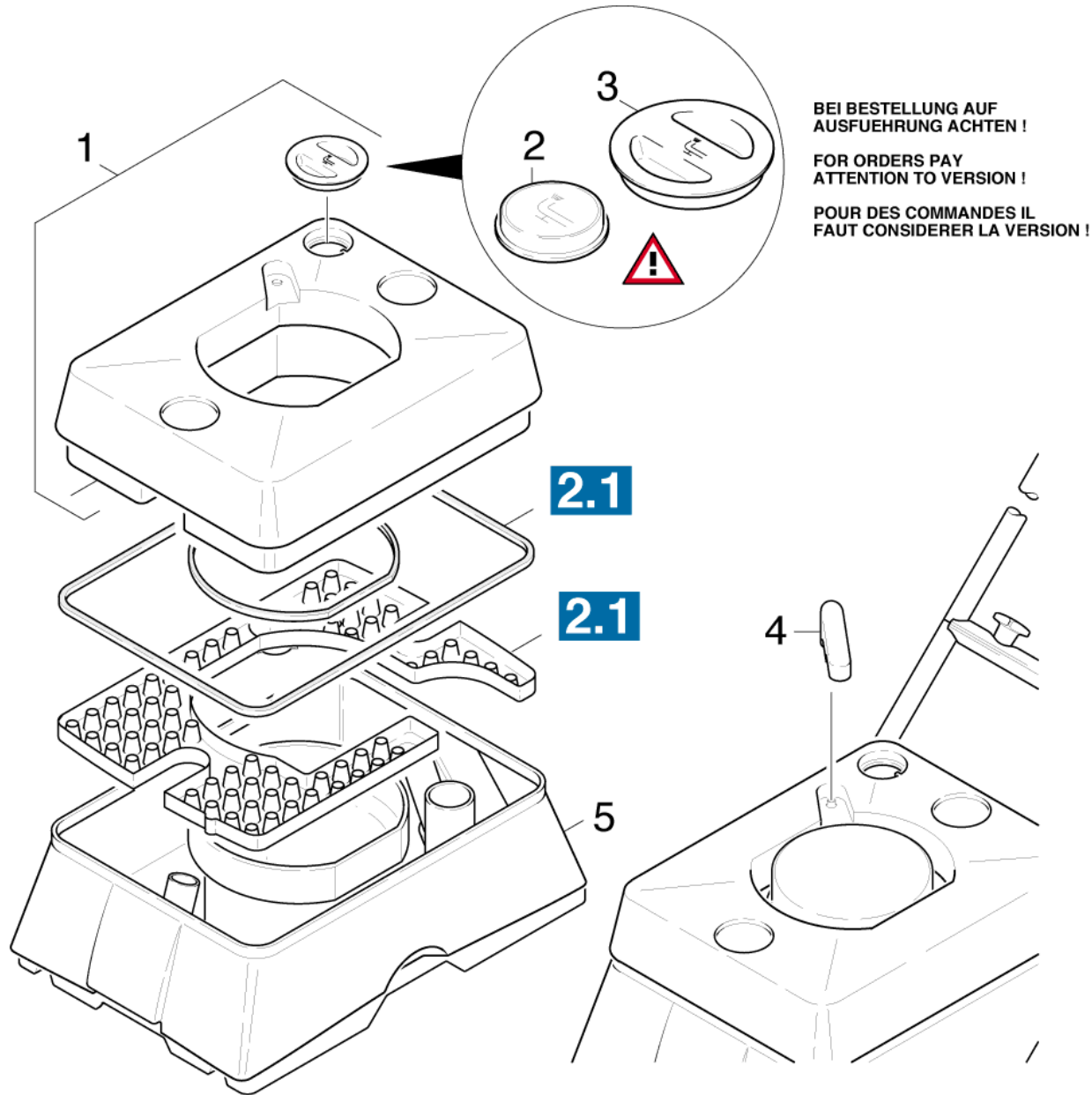


## 22 Individual parts

Pos	Material #	Name	Qty.	Unit	from ser.nr.	up to ser.nr.	Footnote text
1	5.363-328.0	Joint ring	2.000	ST	0000000000	0000000000	
2	7.303-102.0	Screw 3,5x12 -A2-70-bk (In6Rd)	6.000	ST	0000000000	0000000000	
3	5.115-585.0	Washer	2.000	ST	0000000000	0000000000	
4	5.363-327.0	Joint ring	2.000	ST	0000000000	0000000000	
5	6.366-038.0	Bellows	2.000	ST	0000000000	0000000000	
6	7.314-150.0	Straight pin 4h8x32-A1 ISO 2338	1.000	ST	0000000000	0000000000	
7	5.125-035.0	Eccentric	1.000	ST	0000000000	0000000000	
8	7.314-138.0	Straight pin 6h8x32 -St ISO 2338	1.000	ST	0000000000	0000000000	
9	5.324-024.0	Pushbutton	1.000	ST	0000000000	0000000000	
10	5.063-625.0	Cover	1.000	ST	0000000000	0000000000	
10	5.063-503.0	Cover	1.000	ST	0000000000	0000000000	
Position text: / 1.926-806.0							
11	7.815-131.0	Cranked wrench key 5,0-St ISO 2936	1.000	ST	0000000000	0000000000	ORDER ACCORDING TO CONSUMPTION
12	5.481-138.0	Lever	1.000	ST	0000000000	0000000000	
13	5.251-019.0	Bearing support	2.000	ST	0000000000	0000000000	
14	5.365-169.0	Seal	3.000	ST	0000000000	0000000000	
15	7.303-062.0	Sheet metal screw ST3,5X 9,5-ST-A2R (IN	1.000	ST	0000000000	000017994	
16	5.041-090.0	Clamp	1.000	ST	0000000000	000017994	
17	5.100-120.0	Shaft	1.000	ST	0000000000	0000000000	
18	7.303-030.0	Screw M4x8 -St-P2R (In6Rd)	1.000	ST	0000000000	0000000000	
19	5.481-126.0	Lever	1.000	ST	0000000000	0000000000	
20	7.312-292.0	Washer 6 -A2 ISO 7093-1	2.000	ST	0000000000	0000000000	
21	7.306-191.0	Screw M6x10 -A2-70 (In6Rd)	2.000	ST	0000000000	0000000000	
22	7.343-300.0	Lock washer 7-A2 DIN 6799	2.000	ST	0000000000	0000000000	
24	5.003-030.0	Plate	1.000	ST	0000000000	0000000000	

**22 Individual parts**

Pos	Material #	Name	Qty.	Unit	from ser.nr.	up to ser.nr.	Footnote text
25	5.003-031.0	Plate	1.000	ST	0000000000	0000000000	
26	5.115-588.0	Washer	4.000	ST	0000000000	0000000000	
27	7.307-421.0	Threaded pin M6x70-A2-21H ISO 4026	4.000	ST	0000000000	0000000000	
28	7.311-067.0	Hexagon nut M 6-A2-70 ISO 4032	4.000	ST	0000000000	0000000000	
29	7.312-230.0	Serrated lock washer A4,3-FSt-A3E DIN67	1.000	ST	0000000000	0000000000	
30	7.314-659.0	Straight grooved pin 5x24 Kunstst. ISO87	1.000	ST	0000000000	0000000000	ORDER ACCORDING TO CONSUMPTION
31	5.042-932.0	Holder	1.000	ST	0000000000	0000000000	ORDER ACCORDING TO CONSUMPTION
32	7.303-104.0	Screw 5x16 -A2-70 (IN6RD)	1.000	ST	0000000000	0000000000	ORDER ACCORDING TO CONSUMPTION
33	6.631-970.0	Micro switch	1.000	ST	0000000000	0000000000	ORDER ACCORDING TO CONSUMPTION
34	7.306-406.0	Cylinder head screw M3x16-4.8-A2E ISO 1	2.000	ST	0000000000	0000000000	ORDER ACCORDING TO CONSUMPTION
35	7.311-433.0	Hexagon nut M 3-1.4305 ISO 10511	2.000	ST	0000000000	0000000000	ORDER ACCORDING TO CONSUMPTION
36	7.312-294.0	Washer 3-A2 ISO 7093-1	2.000	ST	0000000000	0000000000	ORDER ACCORDING TO CONSUMPTION
37	5.390-159.0	Label	1.000	ST	0000000000	0000000000	



**23 Individual parts FARBUMSTELLUNG**

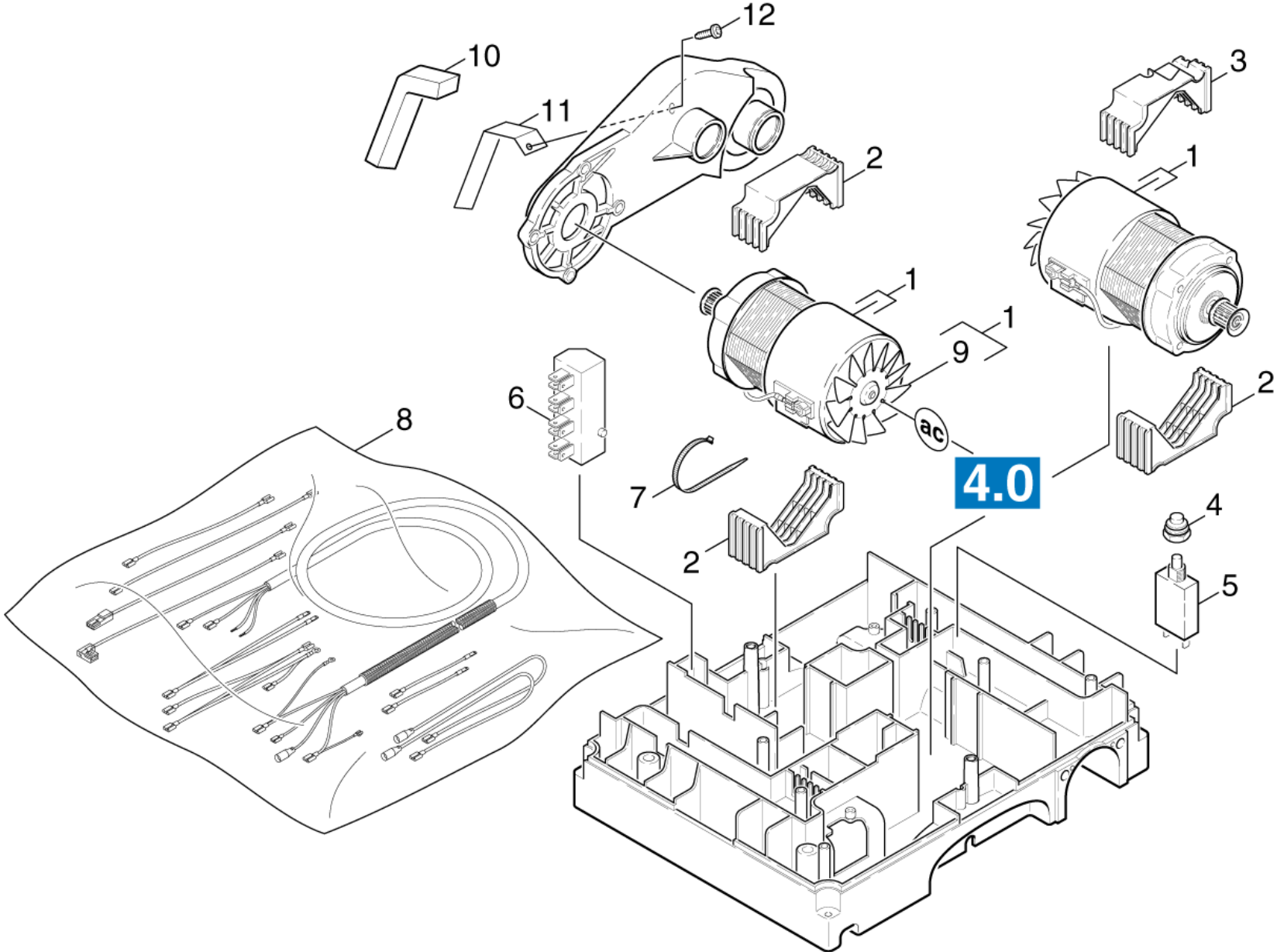
Pos	Material #	Name	Qty.	Unit	from ser.nr.	up to ser.nr.	Footnote text
1	4.066-238.0	Cover complete	1.000	ST	0000000000	0000000000	YELLOW
2	6.368-204.0	Drain plug -D50	1.000	ST	0000000000	000016789	PAY ATTENTION TO VERSION
3	5.063-650.0	Cover	1.000	ST	000016790	0000000000	PAY ATTENTION TO VERSION
4	5.031-407.0	Angle rubber	1.000	ST	0000000000	0000000000	BLACK
5	5.070-559.0	Tank TORNADO	1.000	ST	0000000000	0000000000	
Position text: / 1.926-806.0							
5	4.070-347.0	Tank complete only for replacement	1.000	ST	0000000000	0000000000	

### 30 Appliance bottom part

---

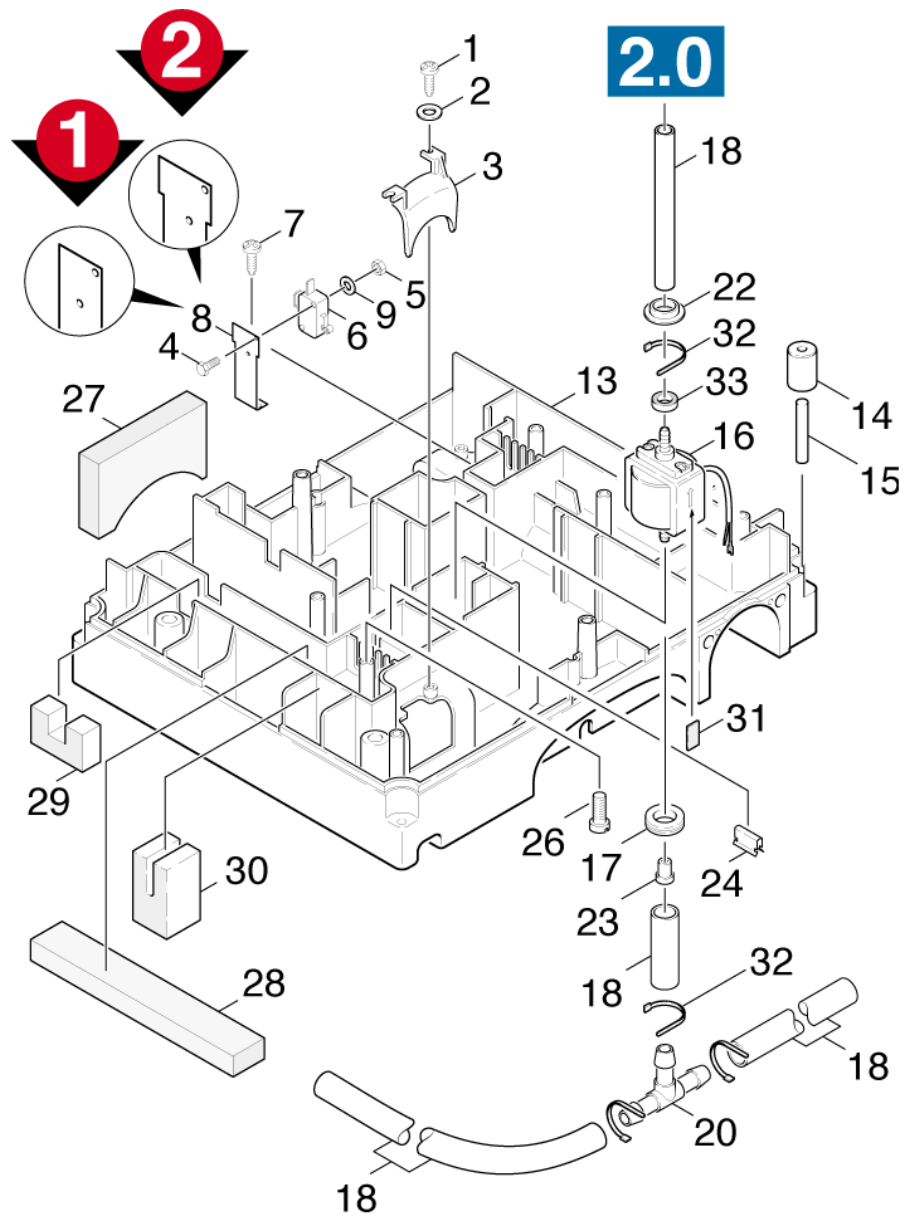
Pos	Name	Qty.	Unit	from ser.nr.	up to ser.nr.
31	Motor individual parts	1.000	ST	0000000000	0000000000
32	Individual parts	1.000	ST	0000000000	0000000000
33	Height adjustment	1.000	ST	0000000000	0000000000
34	Height adjustment	1.000	ST	0000000000	0000000000
35	Suction mechanism	1.000	ST	0000000000	0000000000

---



**31 Motor individual parts**

Pos	Material #	Name	Qty.	Unit	from ser.nr.	up to ser.nr.
1	4.623-278.0	Motor complete	1.000	ST	0000000000	0000000000
2	5.672-028.0	Bracket motor	3.000	ST	0000000000	0000000000
3	5.672-036.0	Bracket motor	1.000	ST	0000000000	0000000000
4	6.368-201.0	Protecting cap	2.000	ST	0000000000	0000000000
5	6.631-747.0	Motor protecting switch	2.000	ST	0000000000	0000000000
6	6.643-537.0	Strip terminal	2.000	ST	0000000000	0000000000
7	6.641-458.0	Cable tape	2.000	ST	0000000000	0000000000
8	4.839-136.0	Electrical small parts	1.000	ST	0000000000	0000000000
10	5.363-426.0	Seal	2.000	ST	0000000000	0000000000
11	5.044-150.0	Holder	2.000	ST	0000000000	0000000000
12	7.303-030.0	Screw M4x8 -St-P2R (In6Rd)	2.000	ST	0000000000	0000000000





### 32 Individual parts

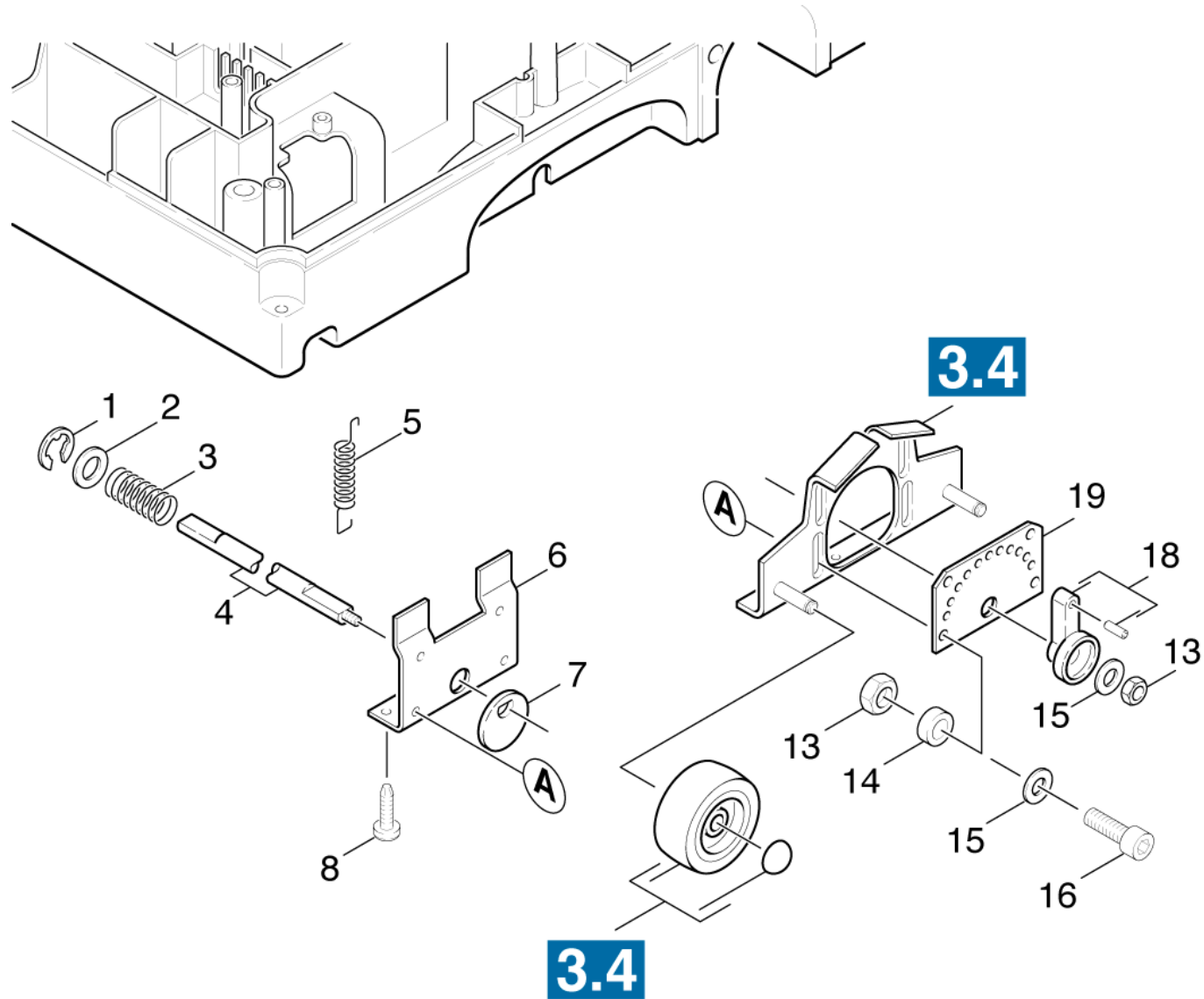
Pos	Material #	Name	Qty.	Unit	from ser.nr.	up to ser.nr.	Footnote text
1	7.303-104.0	Screw 5x16 -A2-70 (IN6RD)	4.000	ST	0000000000	0000000000	
2	7.312-293.0	Washer 4-A2 ISO 7093-1	4.000	ST	0000000000	0000000000	
3	5.063-512.0	Cover	2.000	ST	0000000000	0000000000	
4	7.306-406.0	Cylinder head screw M3x16-4.8-A2E ISO 1	2.000	ST	0000000000	0000000000	
5	7.311-433.0	Hexagon nut M 3-1.4305 ISO 10511	2.000	ST	0000000000	0000000000	
6	6.631-735.0	Micro switch	1.000	ST	0000000000	0000000000	VERSION 2
6	6.631-745.0	Micro switch	1.000	ST	0000000000	0000000000	VERSION 1
7	6.303-122.0	M4 .2X13 DIN 7981 TORX T15 PAN HD HI/LO	1.000	ST	0000000000	0000000000	
8	5.019-206.0	Angle	1.000	ST	0000000000	0000000000	
9	7.312-294.0	Washer 3-A2 ISO 7093-1	1.000	ST	0000000000	0000000000	
13	4.060-338.0	Housing motor only for replacement	1.000	ST	0000077868	0000000000	
Position text: / 1.926-806.0							
13	4.060-341.0	Housing motor	1.000	ST	0000000000	0000000000	
14	5.515-045.0	Roller	4.000	ST	0000000000	0000000000	
15	7.314-147.0	Straight pin 8h8x55 -Cu2 ISO 2338	4.000	ST	0000000000	0000000000	
16	6.473-204.0	Motor pump	1.000	ST	0000000000	0000000000	
17	6.647-365.0	Cable gland	1.000	ST	0000000000	0000000000	
18	6.388-216.0	Hose DN 5	1.000	M	0000000000	0000000000	TO ORDER AS CUT GOODS
20	6.388-409.0	T-Hose nozzle	1.000	ST	0000000000	0000000000	
22	5.363-330.0	Joint ring	1.000	ST	0000000000	0000000000	
23	5.131-024.0	Screen	1.000	ST	0000000000	0000000000	
24	6.373-611.0	U-Fastening	2.000	ST	0000000000	0000000000	
26	7.309-031.0	Screw M6x16-Z1(In6Rd) -A2-70 DIN6900	9.000	ST	0000000000	0000000000	
27	5.673-056.0	Plate insulating	2.000	ST	0000000000	0000000000	
28	5.673-054.0	Plate insulating	2.000	ST	0000000000	0000000000	

### 32 Individual parts

---

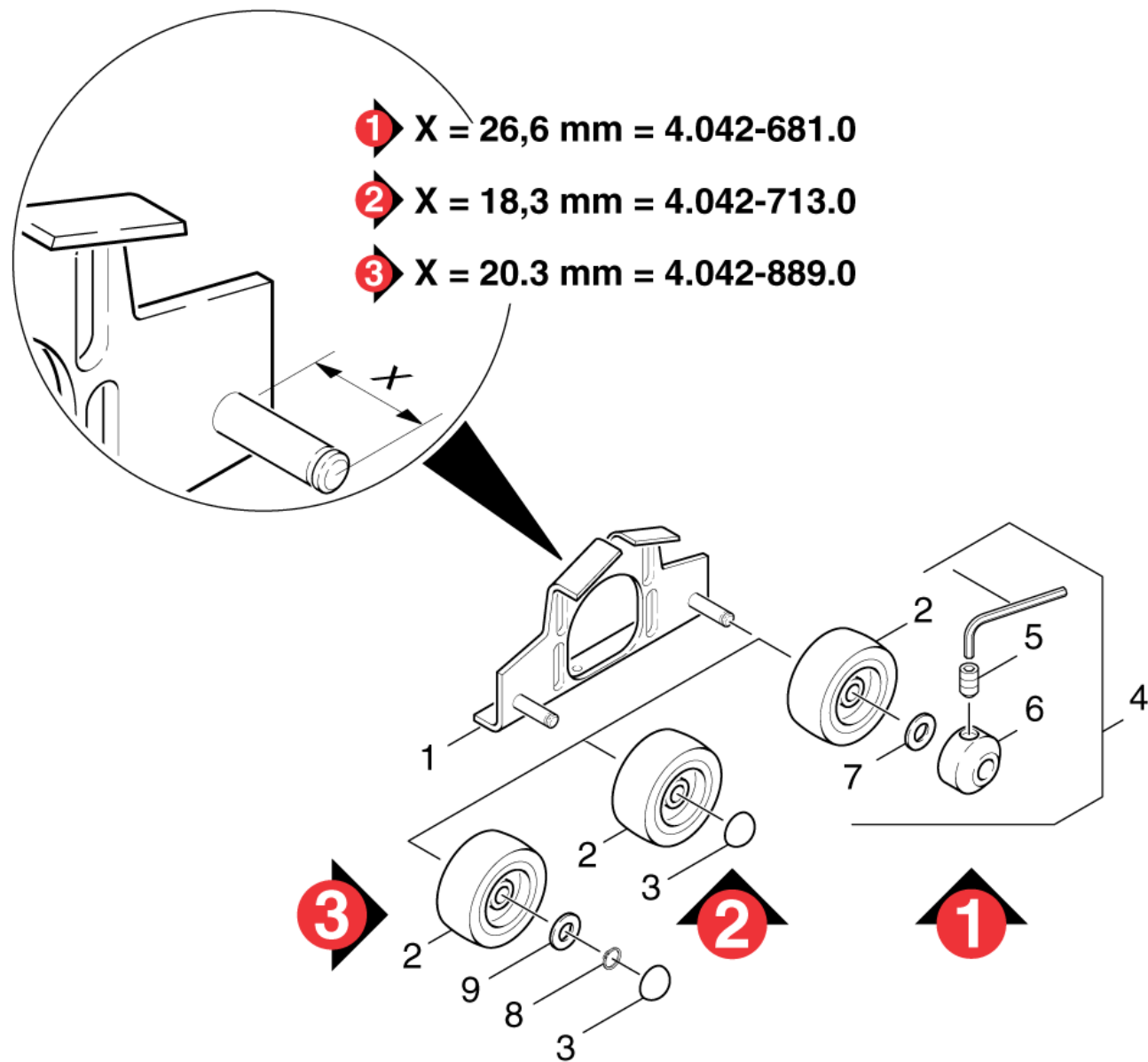
Pos	Material #	Name	Qty.	Unit	from ser.nr.	up to ser.nr.	Footnote text
29	5.673-055.0	Plate insulating	2.000	ST	0000000000	0000000000	
30	5.673-057.0	Insulating mat	2.000	ST	0000000000	0000000000	
31	6.286-001.0	Sealing tape TESAMOLL 19x3	1.000	M	0000000000	0000000000	TO ORDER AS CUT GOODS
32	6.641-463.0	Cable tape	2.000	ST	0000000000	0000000000	
33	5.363-345.0	Joint ring	1.000	ST	0000000000	0000000000	

---



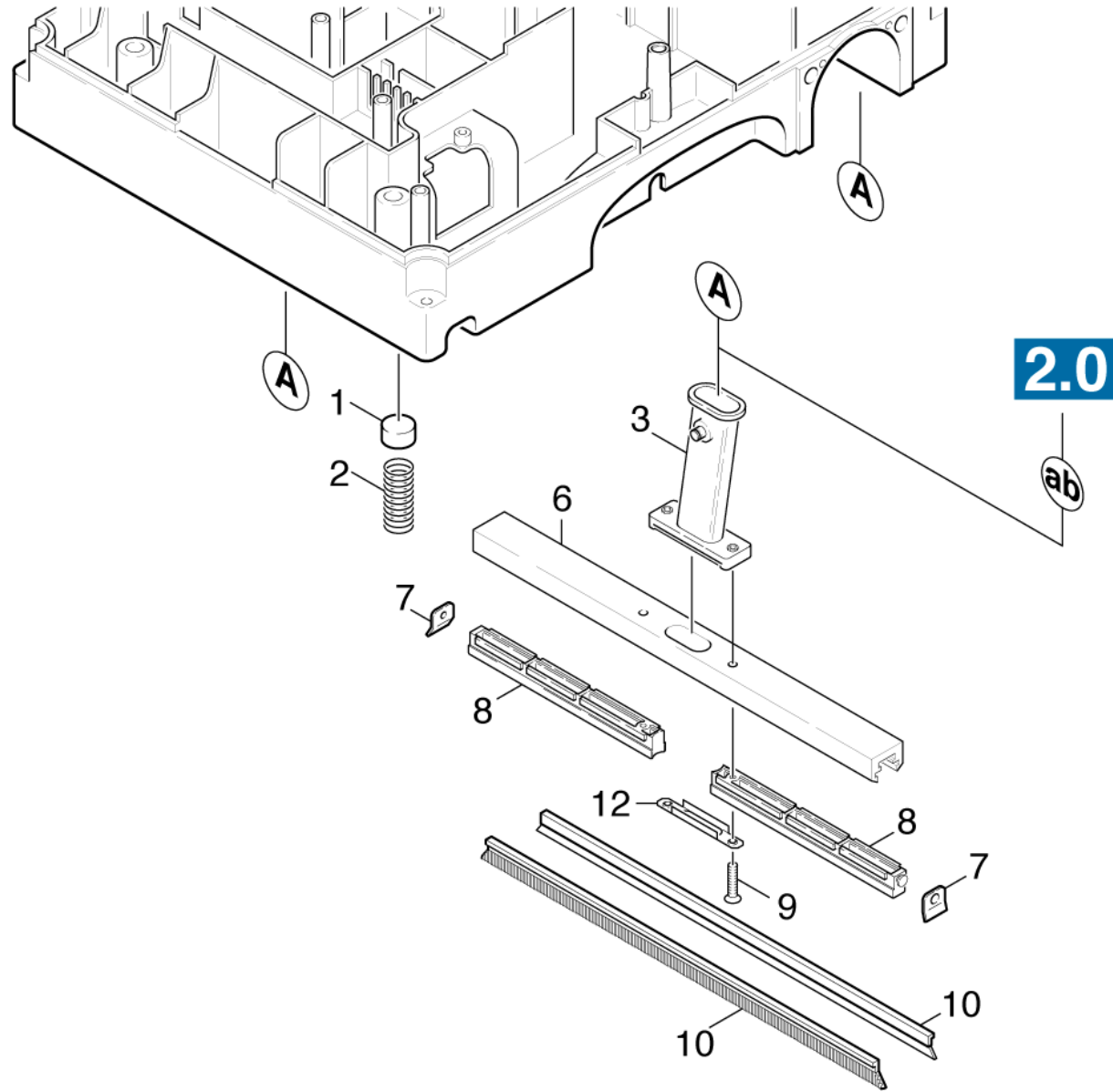
### 33 Height adjustment

Pos	Material #	Name	Qty.	Unit	from ser.nr.	up to ser.nr.
1	7.343-303.0	Locking ring 8-A2 DIN 6799	1.000	ST	0000000000	0000000000
2	5.115-239.0	Washer	1.000	ST	0000000000	0000000000
3	5.332-207.0	Helical spring	1.000	ST	0000000000	0000000000
4	5.100-146.0	Shaft	1.000	ST	0000000000	0000000000
5	5.332-311.0	Extension spring	2.000	ST	0000000000	0000000000
6	5.046-518.0	Sheet metal component	2.000	ST	0000000000	0000000000
7	5.125-032.0	Eccentric	2.000	ST	0000000000	0000000000
8	7.306-179.0	Screw M5x8 -A2-70 (In6Rd)	4.000	ST	0000000000	0000000000
Position text: / 1.926-681.0						
8	7.303-104.0	Screw 5x16 -A2-70 (IN6RD)	4.000	ST	0000000000	0000000000
13	7.311-067.0	Hexagon nut M 6-A2-70 ISO 4032	9.000	ST	0000000000	0000000000
14	5.112-448.0	Bush	8.000	ST	0000000000	0000000000
15	7.312-026.0	Washer 6 -A2 ISO 7090	9.000	ST	0000000000	0000000000
16	7.306-031.0	Screw M 6x16-A2-70 DIN 7984	8.000	ST	0000000000	0000000000
18	4.481-080.0	Handhold	2.000	ST	0000000000	0000000000
19	5.001-395.0	Plate	2.000	ST	0000000000	0000000000



### 34 Height adjustment

Pos	Material #	Name	Qty.	Unit	from ser.nr.	up to ser.nr.	Footnote text
1	4.042-681.0	Holder	2.000	ST	0000000000	0000016789	VERSION 1
1	4.042-889.0	Holder	2.000	ST	0000034855	0000000000	VERSION 3
1	4.042-713.0	Holder	2.000	ST	0000016790	0000000000	VERSION 2
2	6.435-373.0	Wheel traceless grey D50	4.000	ST	0000000000	0000000000	
Position text: / 1.926-806.0							
2	5.515-120.0	Wheel D.50	4.000	ST	0000000000	0000000000	OIL RESISTANT
3	6.343-132.0	Lock washer 8	4.000	ST	0000034855	0000000000	VERSION 2+3
4		Stockpiling discontinued	1.000	ST	0000000000	0000000000	VERSION 1
5	7.307-360.0	Threaded pin M 5X 6-A2-21H ISO 4029	4.000	ST	0000000000	0000000000	VERSION 1
6	5.114-223.0	Adjusting ring	4.000	ST	0000000000	0000000000	VERSION 1
7	7.312-017.0	Washer 8-A2 ISO 7089	4.000	ST	0000000000	0000000000	VERSION 1
8	7.343-127.0	Locking ring 8x0,8 -Rf-St DIN 471	4.000	ST	0000034855	0000000000	VERSION 3
9	7.362-002.0	Joint ring A8x11,5 -Cu DIN 7603	4.000	ST	0000034355	0000000000	VERSION 3



**35 Suction mechanism**

Pos	Material #	Name	Qty.	Unit	from ser.nr.	up to ser.nr.	Footnote text
1	5.115-588.0	Washer	4.000	ST	0000000000	0000000000	
2	5.332-216.0	Helical spring	4.000	ST	0000000000	0000000000	
3	5.013-072.0	Funnel	2.000	ST	0000000000	0000000000	
6	5.030-862.0	Profile	2.000	ST	0000000000	0000000000	
7	5.003-029.0	Plate	4.000	ST	0000000000	0000000000	
8	5.031-072.0	Moulded part	4.000	ST	0000000000	0000000000	
9	7.305-037.0	Countersunk screw M4x30-A2-70 (IN6RD)	4.000	ST	0000016790	0000000000	
9	7.306-209.0	Screw M 4X 20-A2-70 (In6Rd)	4.000	ST	0000000000	0000016789	
10	5.181-041.0	Strip grey	2.000	ZSA	0000000000	0000000000	
10	5.181-040.0	Strip one pair	2.000	ZSA	0000000000	0000000000	VIOLET
12	5.042-888.0	Holder	1.000	ST	0000016790	0000000000	

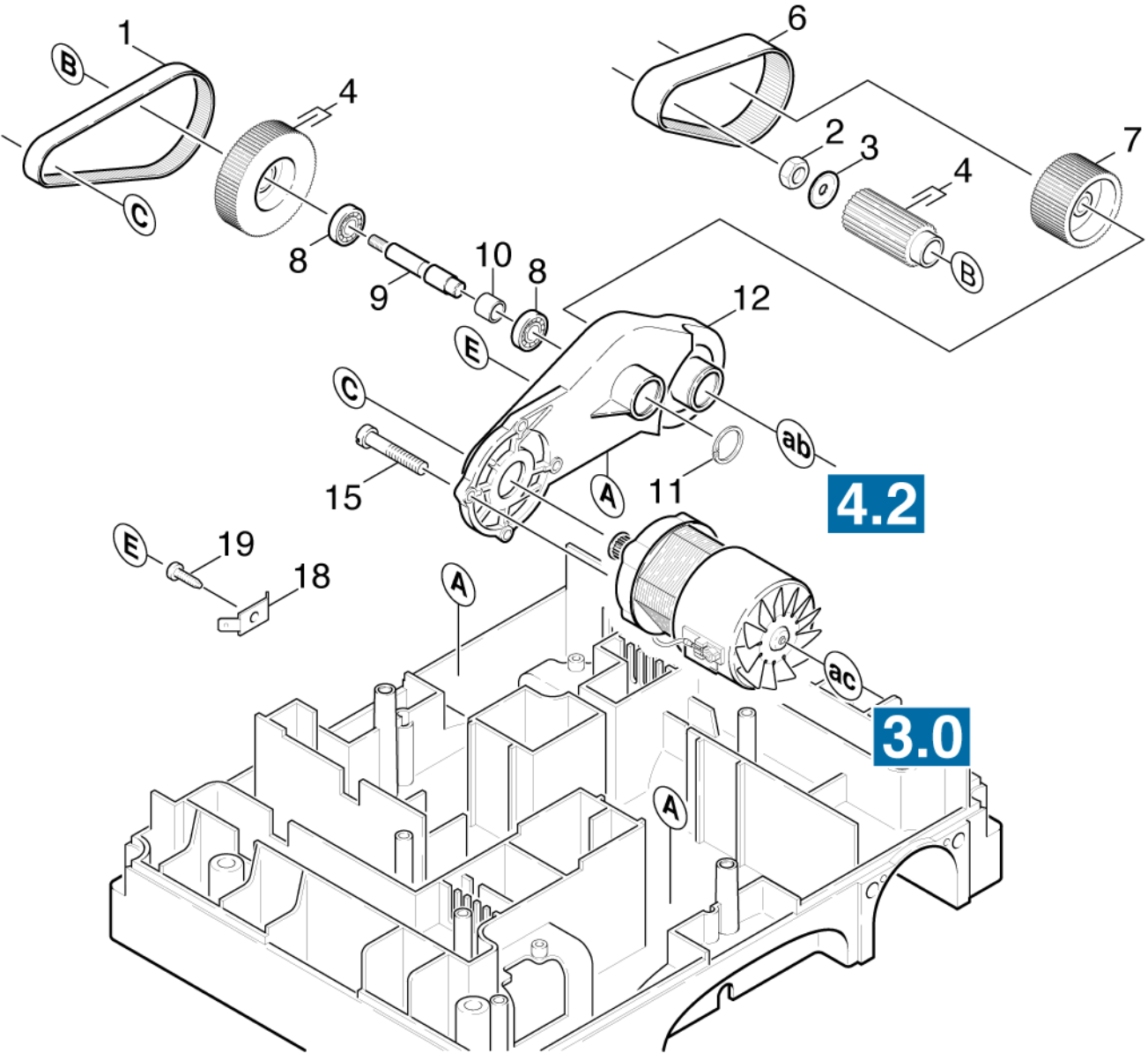


#### 40 Gear and brushes

---

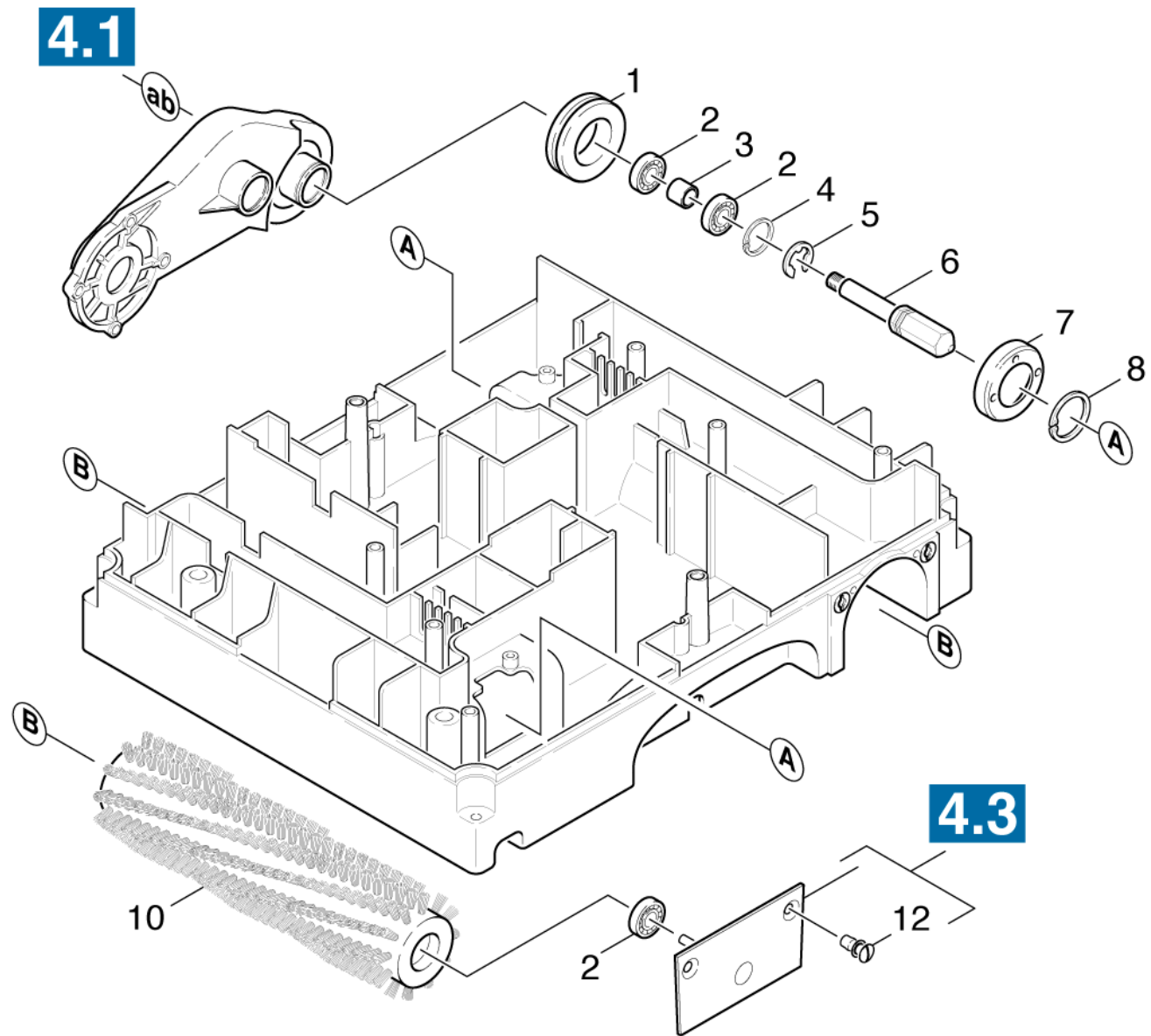
Pos	Name	Qty.	Unit	from ser.nr.	up to ser.nr.
41	Gear	1.000	ST	0000000000	0000000000
42	Roller brush	1.000	ST	0000000000	0000000000
43	Closure cap brushes	1.000	ST	0000000000	0000000000

---



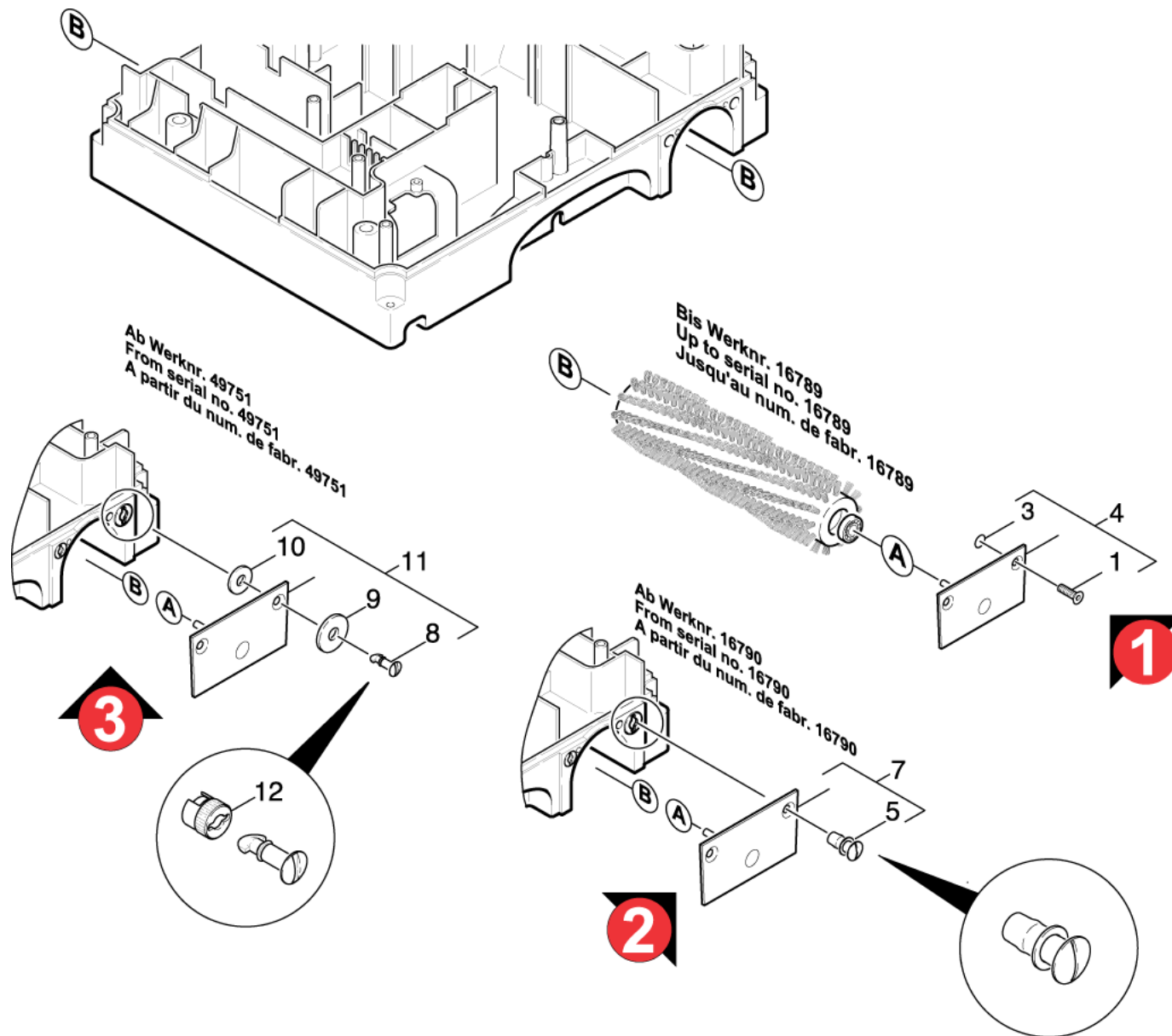
## 41 Gear

Pos	Material #	Name	Qty.	Unit	from ser.nr.	up to ser.nr.
1	6.348-265.0	Toothed belt	2.000	ST	0000000000	0000000000
2	7.311-068.0	Hexagon nut M 8-A2-70 ISO 4032	2.000	ST	0000000000	0000000000
3	5.115-590.0	Washer	2.000	ST	0000000000	0000000000
4	4.625-009.0	Belt pulley kit	2.000	ST	0000000000	0000000000
6	6.348-264.0	Toothed belt	2.000	ST	0000000000	0000000000
7	5.625-243.0	Belt pulley	2.000	ST	0000000000	0000000000
8	6.401-363.0	Ball bearing	4.000	ST	0000000000	0000000000
9	5.100-122.0	Shaft	2.000	ST	0000000000	0000000000
10	5.110-528.0	Sleeve	1.000	ST	0000000000	0000000000
11	7.343-151.0	Locking ring 28x1,2-FST-RF DIN 472	2.000	ST	0000000000	0000000000
12	5.060-446.0	Housing gear	2.000	ST	0000000000	0000000000
15	7.303-083.0	Sheet metal screw ST5,5x25-A2-70-SCHW (I	8.000	ST	0000000000	0000000000
18	6.641-269.0	Tab	1.000	ST	0000000000	0000000000
19	7.303-030.0	Screw M4x8 -St-P2R (In6Rd)	4.000	ST	0000000000	0000000000



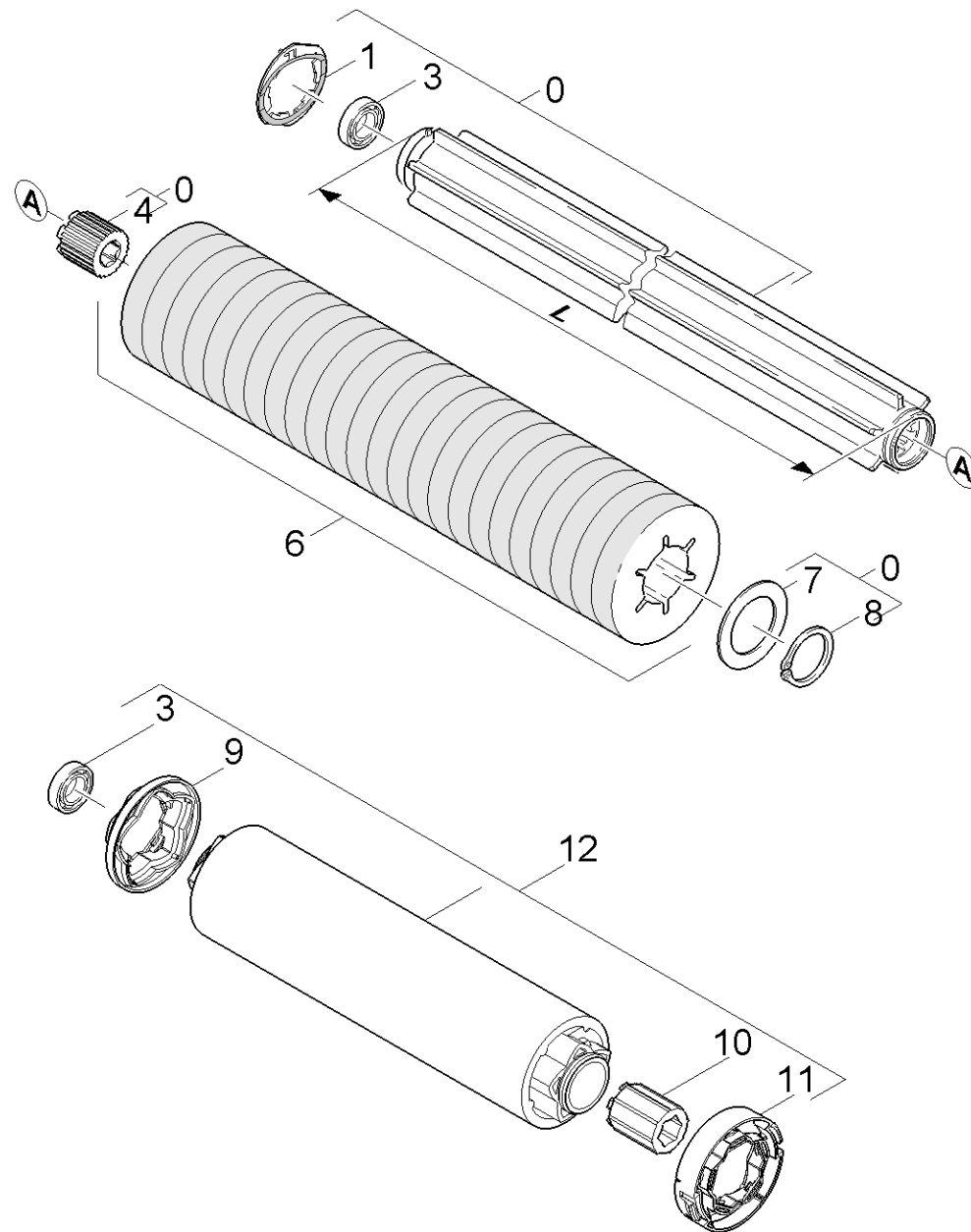
**42 Roller brush**

Pos	Material #	Name	Qty.	Unit	from ser.nr.	up to ser.nr.
1	6.647-366.0	Wire protecting sleeve	2.000	ST	0000000000	0000000000
2	6.401-363.0	Ball bearing	8.000	ST	0000000000	0000000000
3	5.110-528.0	Sleeve	2.000	ST	0000000000	0000000000
4	7.343-151.0	Locking ring 28x1,2-FST-RF DIN 472	2.000	ST	0000000000	0000000000
5	7.343-206.0	Lock washer 12-2.1030 DIN 6799	2.000	ST	0000000000	0000000000
6	5.100-145.0	Shaft hexagonal BR 400	2.000	ST	0000000000	0000000000
7	5.063-296.0	Cover	2.000	ST	0000000000	0000000000
8	7.343-039.0	Locking ring 35x1,5-FST-RF DIN 471	2.000	ST	0000000000	0000000000
10	5.762-125.0	Roller brush orange (old colour red)	2.000	ST	0000000000	0000000000
10	5.762-127.0	Roller brush white (old colour black)	2.000	ST	0000000000	0000000000
10	5.762-265.0	Roller brush black (old colour grey)	2.000	ST	0000000000	0000000000
10	5.762-112.0	Roller brush red (old colour white)	2.000	ST	0000000000	0000000000
10	5.762-126.0	Roller brush green (old colour grey)	2.000	ST	0000000000	0000000000



### 43 Closure cap brushes

Pos	Material #	Name	Qty.	Unit	from ser.nr.	up to ser.nr.	Footnote text
1	7.305-637.0	Countersunk screw M8x16-A2-70 ISO 10642	4.000	ST	0000000000	0000016789	VERSION 1
3	6.362-487.0	O-Ring seal 5,7 X 1,9-NBR 70	4.000	ST	0000000000	0000016789	VERSION 1
4	4.063-213.0	Cover complete	2.000	ST	0000000000	0000016789	VERSION 1
5	2.639-920.0	Conversion kit closure BR400/550	4.000	ST	0000016790	0000000000	VERSION 2
7	4.063-688.0	Cover complete BR400	2.000	ST	0000016790	0000049750	VERSION 2
8	6.375-284.0	Locking plug	4.000	ST	0000049751	0000000000	VERSION 3
9	7.312-292.0	Washer 6 -A2 ISO 7093-1	4.000	ST	0000000000	0000000000	VERSION 3
10	5.115-678.0	Washer	4.000	ST	0000000000	0000000000	VERSION 3
11	4.063-688.0	Cover complete BR400	2.000	ST	0000049751	0000000000	VERSION 3
12	6.375-285.0	Counterpart	4.000	ST	0000000000	0000000000	VERSION 3





50 Pad roll

Pos	Material #	Name	Qty.	Unit	from ser.nr.	up to ser.nr.	var. information
0	4.762-183.0	Roll pad	1.000	ST	0000000000	0000000000	L = 325 MM
1	4.115-003.0	Washer closure	1.000	ST	0000000000	0000000000	
3	7.401-169.0	Ball bearing 6201-2RS-WAELZLAGST DIN 625	1.000	ST	0000000000	0000000000	
4	5.112-719.0	Bush hexagon 17mm	1.000	ST			
6	6.369-629.0	Pad red with sleeve	1.000	ZSA			(24x)
6	6.369-630.0	Pad white with sleeve	1.000	ZSA			(24x)
6	6.369-627.0	Pad yellow with sleeve	1.000	ZSA			(24x)
6	6.369-628.0	Pad green with sleeve	1.000	ZSA			(24x)
7	5.005-266.0	Ronde	1.000	ST	0000000000	0000000000	
8	7.343-030.0	Locking ring 40x1,75-FST-RF DIN 471	1.000	ST	0000000000	0000000000	
9	5.474-040.0	Carrier without lock-in position	1.000	ST			
10	5.112-719.0	Bush hexagon 17mm	1.000	ST			
11	5.474-039.0	Carrier	1.000	ST			
12	4.762-363.0	Roll microfibre BR 400	1.000	ST			

7 Ronde (5.005-266.0)

---

Material #	Name	Qty.	Unit	from ser.nr.	up to ser.nr.
7.235-209.0	Plate 1,5-1.4301 ISO 9445	0.050	KG	0000000000	0000000000

---

Position text: 50052660

---