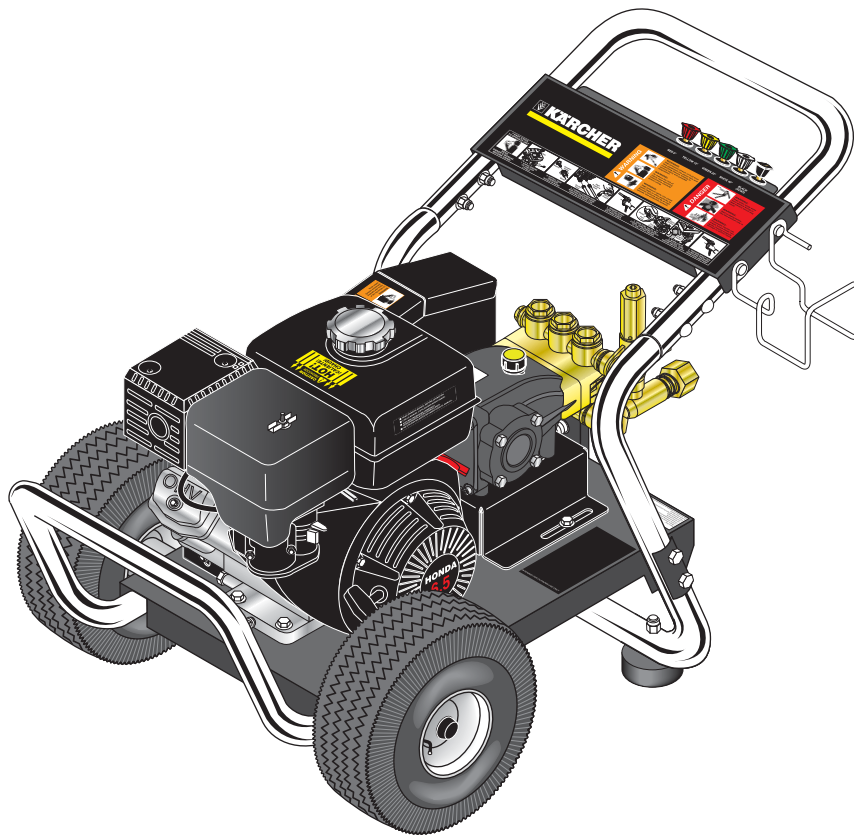


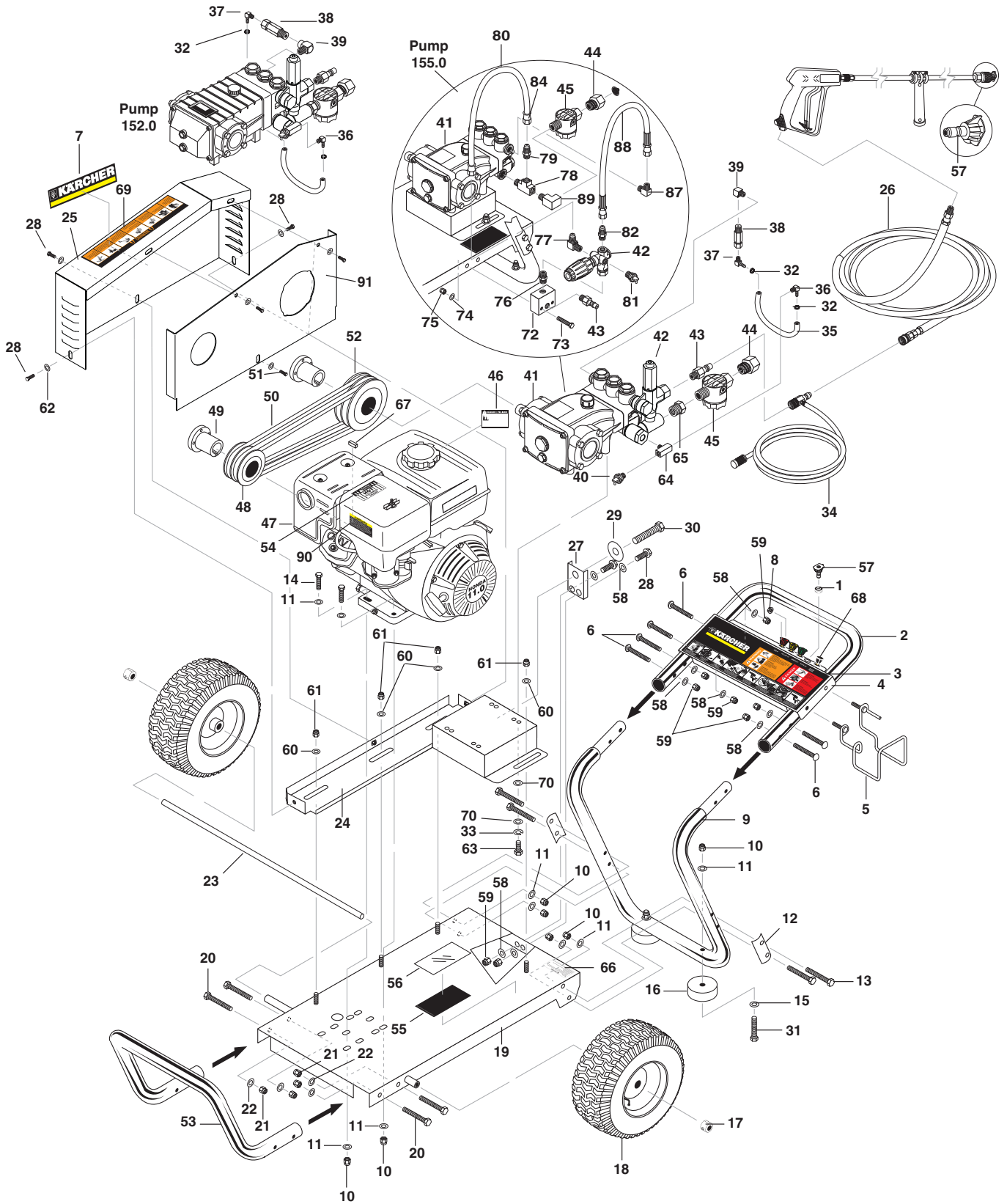
OPERATOR'S MANUAL



<u>MODEL</u>	<u>ORDER #</u>
HD 3.0/30 Pb	1.575-152.0
HD 3.7/35 Pb	1.575-154.0
HD 3.0/40 Pb	1.575-155.0

To locate your local Kärcher Commercial Pressure Washer Dealer nearest you,
visit www.karchercommercial.com

EXPLODED VIEW - 1.575-152.0,154.0,155.0



EXPLODED VIEW PARTS LIST - 1.575-152.0,154.0,155.0

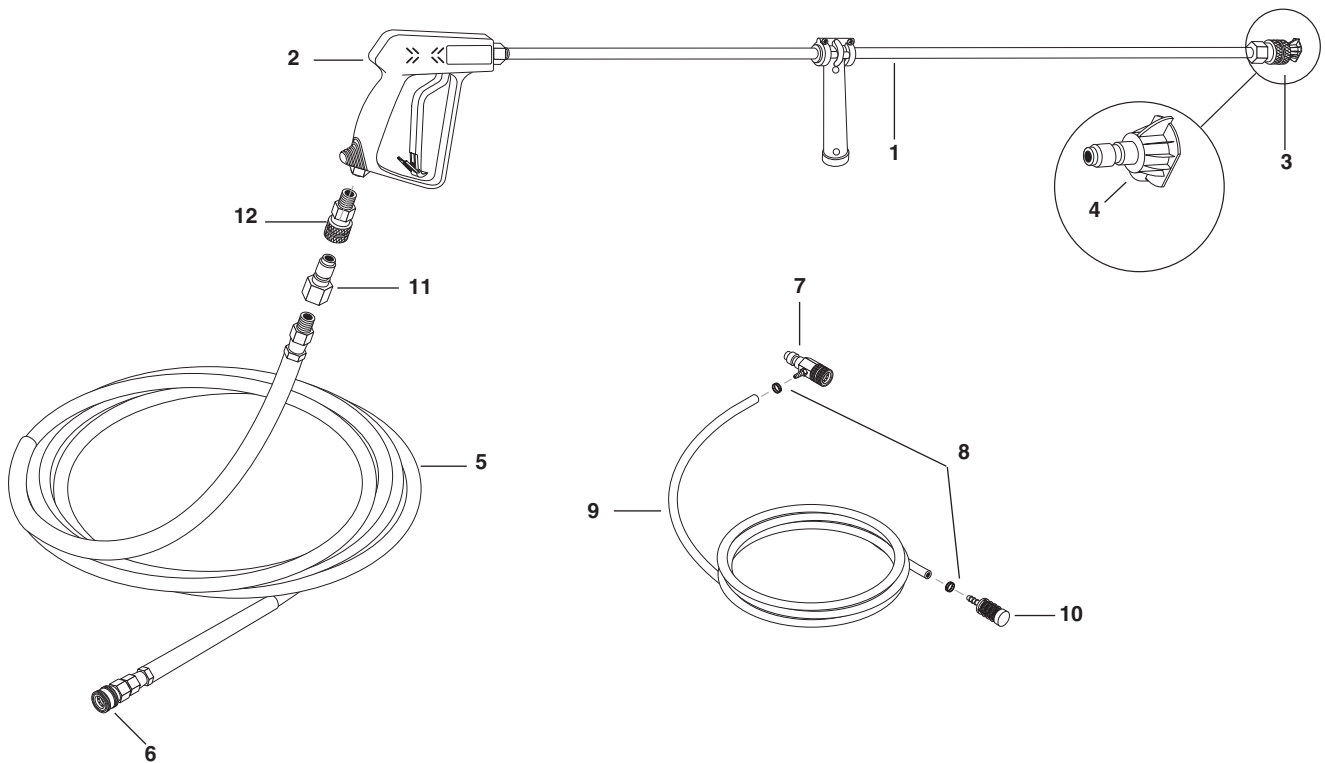
ITEM	PART NO.	DESCRIPTION	QTY	ITEM	PART NO.	DESCRIPTION	QTY
1	9.802-064.0	Grommet, Rubber, Nozzle Holder	5	37	8.706-955	Hose Barb, 1/4" Barb x 1/8" ML Pipe, 90°	1
2	8.920-262.0	Handle, Grab, Chrome	1		8.706-940.0	Hose Barb, 1/4" Barb x 1/8" ML Pipe	1
3	9.800-723.0	Label, Cold Water Handle	1	38	9.802-190.0	Valve, E-Z Start, 3/8" MPT x 1/8" FPT	1
4	9.803-126.0	Plate, Warning/Instruction, Black	1		9.804-065.0	Valve, E-Z Start, 1/4" MPT x 1/8" FPT (152.0)	1
5	9.803-098.0	Hanger, Hose/Wand	1	39	8.706-207.0	Elbow, 3/8", Street	1
6	9.802-706.0	Bolt, Carriage, 1/4"-20 x 1-3/4", Zinc	6		8.706-200.0	Elbow, 1/4", Street (152.0)	1
7	9.800-110.0	Label Karcher Logo	1	40	9.804-025.0	Pump Protector, 1/4" PTP (All except 155.0)	1
8	9.802-778.0	Nut, 5/16" Whiz Loc Flange	2	41		Pump, See Specifications Pages	
9	8.920-261.0	Handle, Lower Grab, Chrome	1	42		Unloader, See Specifications Pages	
10	9.197-003.0	Nut, 3/8" ESNA, NC	10	43	9.802-171.0	Nipple, 3/8" x 3/8" NPT ST Male	1
11	9.802-807.0	Washer, 3/8" SAE, Flat	14	44	9.802-146.0	Swivel, 1/2" MP x 3/4" GHF w/Strainer	1
12	9.803-114.0	Retainer Bracket, Handle, Black	2	45	9.802-163.0	Strainer, 1/2" PA, Inline Plastic	1
13	9.802-728.0	Bolt, 3/8" x 2" NC, HH	4	46	9.800-008.0	Label, Danger Cool Engine	1
14	9.802-727.0	Bolt, 3/8" x 1-3/4", Tap	4	47		Engine, See Specifications Pages	
15	9.802-817.0	Washer, 3/8" x 1", Steel	2	48		Engine Pulley, See Specifications Pages	
16	9.802-066.0	Pad, Soft Rubber	2	49		Engine Bushing, See Specifications Pages	
17	9.802-782.0	Collar, 5/8" Bore Shaft, 3010	2	50		Belts, See Specifications Pages	
18	9.802-271.0	Wheel & Tire Assy., 6" Steel Rim w/Tube (152.0,154.0,155.0)	2	51		Pump Bushing, See Specifications Pages	
19	9.803-115.0	Frame Assy, Large, Black (152.0,154.0,155.0)	1	52		Pump Pulley, See Specifications Pages	
20	9.802-712.0	Bolt, 5/16" x 1-3/4", NC, Carriage, Zinc	4	53	8.920-263.0	Handle, Bumper, Chrome	1
21	9.802-776.0	Nut, 5/16", ESNA, NC	4	54	9.800-006.0	Label, Hot/Caliente w/Arrows, Warning	1
22	8.718-980.0	Washer, 5/16" Flat, SAE	4	55	8.932-968.0	Label, Intended For Outdoor Use	1
23	8.911-226.0	Axle, 5/8" x 27" L (152.0,154.0,155.0)	1	56	9.800-034.0	Label, Clear Lexan, 2-1/4" x 4-1/2"	1
24	8.917-893.0	Assy Black, Slider Pump / Belt Guard Mount (152.0,154.0,155.0)	1	57	8.712-337.0	Nozzle, 0003.5, Red (152.0)	1
25	8.917-886.0	Plate, Belt Guard Front Cover	1		8.712-338.0	Nozzle, SAQCMEG 1503.5, Yellow (152.0)	1
26		Hose and Spray Gun, See Assy Page			8.712-339.0	Nozzle, SAQCMEG, 2503.5, Green (152.0)	1
27	9.803-118.0	Bracket, Take Up, CW, Black	1		8.712-340.0	Nozzle, SAQCMEG 4003.5, White (152.0)	1
28	9.802-700.0	Screw, 1/4" x 3/4" HH NC	8		8.712-350.0	Nozzle, SACQMEG, 0004.5, Red (154.0)	1
29	9.802-809.0	Washer, 1/2", Flat, SAE	1		8.712-360.0	Nozzle, SAQCMEG 1504.0, Yellow (154.0)	1
30	9.802-740.0	Bolt, 1/2" x 3-1/2" HEX	1		8.712-370.0	Nozzle, SAQCMEG, 2504.0, Green (154.0)	1
31	9.802-730.0	Bolt, 3/8" x 2-1/4", HH	2		8.712-380.0	Nozzle, SAQCMEG 4004.0, White (154.0)	1
32	6.390-126.0	Clamp, Hose, .46-54 ST	2		8.712-331.0	Nozzle, SACQMEG, 0003 Red(155.0)	1
33	9.802-813.0	Washer, 5/16" Lock (152.0)	4		8.712-333.0	Nozzle, SAQCMEG 1503.0, Yellow (155.0)	1
	9.802-816.0	Washer, 7/16" Lock, Split (154.0,155.0)	4		8.712-334.0	Nozzle, SAQCMEG, 2503.0, Green (155.0)	1
34	9.802-225.0	Injector Assy., Detergent, Non-Adj, 3-5 GPM, 0.083	1		8.712-335.0	Nozzle, SAQCMEG 4003.0, White(155.0)	1
35	9.802-254.0	Hose, 1/4", Push-On, Fuel Line (All except 155.0)	1 ft.				
36	8.706-958.0	Barb, 1/4" Barb x 1/4" ML Pipe, 90°	1				

EXPLODED VIEW PARTS LIST - 1.575-152.0,154.0,155.0

ITEM	PART NO.	DESCRIPTION	QTY
58	9.802-802.0	Washer, 1/4" Flat	10
59	9.802-773.0	Nut, 1/4" ESNA	8
60	8.718-980.0	Washer, 5/16" Flat	4
61	9.802-776.0	Nut, 5/16" ESNA	4
62	9.802-802.0	Washer, 1/4" Flat, SAE	6
63	9.802-741.0	Bolt, 8mm x 16mm Hex (152.0)	4
	9.802-744.0	Bolt, 10mm x 20mm (154.0,155.0)	4
64	8.706-860.0	Tee, 1/2" Branch (155.0)	1
	8.706-854.0	Tee, 1/4" Branch (152.0, 154.0)	1
65	8.706-984.0	Adapter, 1/2" x 1/2" (152.0)	1
66	9.800-049.0	Label, Manufacturer's Cleaning Solution	1
67	9.802-959.0	Key, .247 Sqr. x 2.125"	1
68	9.802-311.0	Nozzle, Compl., Detergent	1
69	9.800-036.0	Label, Warning, Pictoral, Small	1
70	8.718-980.0	Washer, 5/16" Flat (152.0)	4
	9.802-807.0	Washer, 3/8" Flat (155.0)	4
71	8.750-300.0	Unloader, VRT3 Ez Start (155.0)	1
72	9.802-870.0	Block, Unloader, 3/8" x 3/8" 1.25 Steel (155.0)	1
73	9.802-728.0	Bolt, 3/8" x 2", NC HH (155.0)	2
74	9.802-807.0	Washer, 3/8" SAE, Flat (155.0)	2
75	9.197-003.0	Nut, 3/8" ESNA NC (155.0)	2
76	8.705-974.0	Nipple, 3/8" Hex Steel (155.0)	1
77	9.802-129.0	Elbow, 3/8" x 1/2" JIC (155.0)	1
78	8.706-860.0	Street Tee, 1/2" (155.0)	1
79	9.802-128.0	Nipple, 1/2" x 1/2" JIC (155.0)	1
80	9.802-259.0	Hose, Push-on 1/2" (155.0)	15"
81	8.707-254.0	Pump Protector, 3/8" PTP (155.0)	1
82	9.802-036.0	Nipple, 1/2" JIC, 3/8" Pipe (155.0)	1
83	9.802-810.0	Washer, 5/8" Flat	2
84	9.802-151.0	Swivel, 1/2" JIC, Female, Push-On (155.0)	2
85	9.802-959.0	Key, .247" Sqr. x 2.125"	1
86	9.800-036.0	Label, Warning, Pictoral, Small	1
87	9.802-039.0	Elbow, 1/2" JIC, 3/8", 90° (155.0)	1
88	8.918-422.0	Hose, 3/8" x 20", 2 Wire, Pressure Loop (155.0)	1
89	8.706-829.0	Elbow, 1/2" Street, Brass	1
90	8.751-096.0	Label Regulation 4442.6	1
91	8.917-889.0	Plate, Belt Guard Back Cover	1
	8.920-542.0	Black Plate Belt Guard (152.0)	1

▲ Not Shown

HOSE & SPRAY GUN ASSEMBLY



HOSE & SPRAY GUN ASSEMBLY PARTS LIST

ITEM	PART NO.	DESCRIPTION	QTY
1	9.802-219.0	Wand Assy., Side Grip w/1/4" Coupler, 35-1/2"	1
2	8.710-384.0	Gun, St-1500, 5000 PSI, 10.4 Gpm	1
3	9.802-164.0	Coupler, 1/4" Female, Brass	1
4	Nozzle, See Breakdown for Part Numbers		
5	8.739-125.0	Hose, 3/8" x 50', 1 Wire, Tuff-Flex, (150.0, 151.0, 152.0)	1
	8.739-203.0	Hose, 3/8" x 50', 2 Wire, Tuff-Flex (154.0, 155.0)	1
6	9.802-166.0	Coupler, 3/8" Female, Brass	1
7	9.802-216.0	Injector, Chemical, Non-Adjust, 3-5 GPM, .083	1
8	6.390-126.0	Clamp, Hose	2
9	9.802-251.0	Tube, 1/4" x 1/2" Clear Vinyl	6 ft.
10	8.707-057.0	TStrainer, Plastic, 1/4" Hose Barb	1
11	9.802-170.0	Nipple 3/8 x 3/8 NPT Fem (155.0 Only)	1
12	9.802-169.0	Coupler 3/8" Male Brass (155.0 Only)	1

SPECIFICATIONS

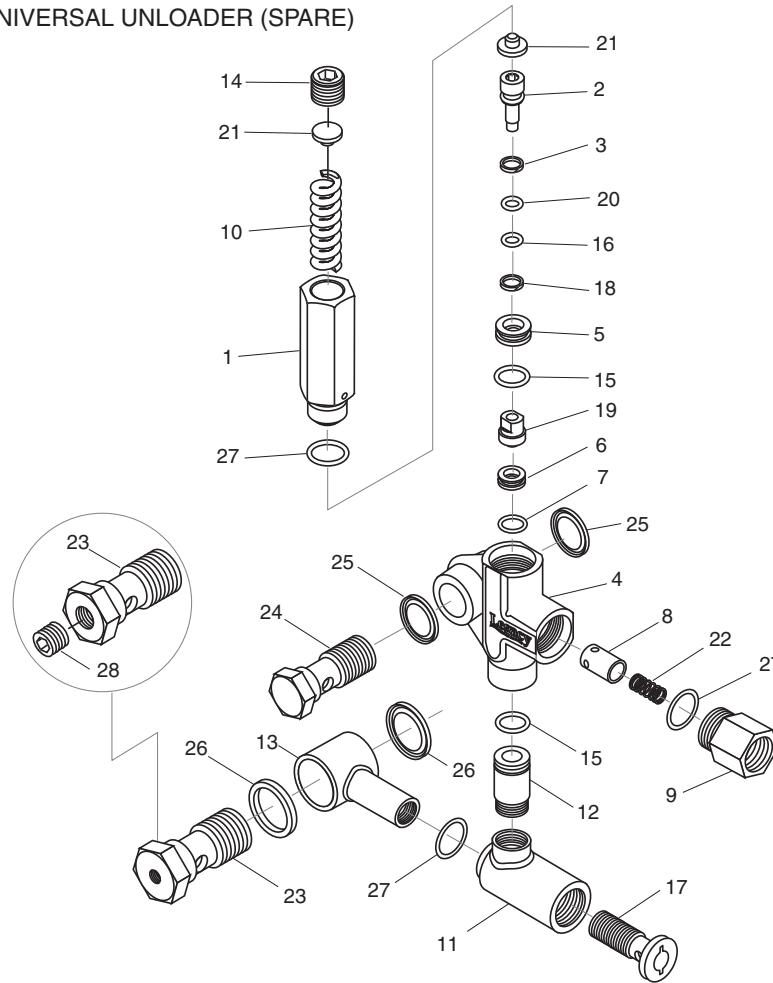
Model	GPM	Pressure (PSI)	Nozzle Size	Pump	Pump Part No.	Unloader Part No.	Engine	Engine Part No.	Pump Pulley	Pump Pulley Part No.
1.575-152.0	3.0	3000	3.5	KD3030	9.804-006.0	9.175-018.0	GX270 (270cc)	8.750-680.0	2BK80	9.802-389.0
1.575-154.0	3.7	3500	4.0	KM4035R.3	8.751-189.0	9.175-018.0	GX390 (390cc)	8.750-580.0	2BK90H	8.715-593.0
1.575-155.0	3.0	4000	3.0	KM3540R.3	8.751-186.0	8.750-300.0	GX390 (390cc)	8.750-580.0	2BK80H	9.802-389.0

SPECIFICATIONS

Model	Pump Bushing	Bushing Part No.	Engine Pulley	Pulley Part No.	Engine Bushing	Bushing Part No.	Belt Size	Belt Part No.
1.575-152.0	24MM	9.802-402.0	2BK40H	9.802-384.0	HX1"	9.802-398.0	BX38 (2)	9.802-417.0
1.575-154.0	24MM	9.802-402.0	2BK32H	9.802-381.0	HX1"	9.802-398.0	BX39 (2)	9.802-418.0
1.575-155.0	24MM	9.802-402.0	2BK40H	9.802-384.0	HX1"	9.802-398.0	BX38 (2)	9.802-417.0

UU1 UNLOADER EXPLODED VIEW

9.175-018.0
 UU1 3500PSI, UNIVERSAL UNLOADER (SPARE)

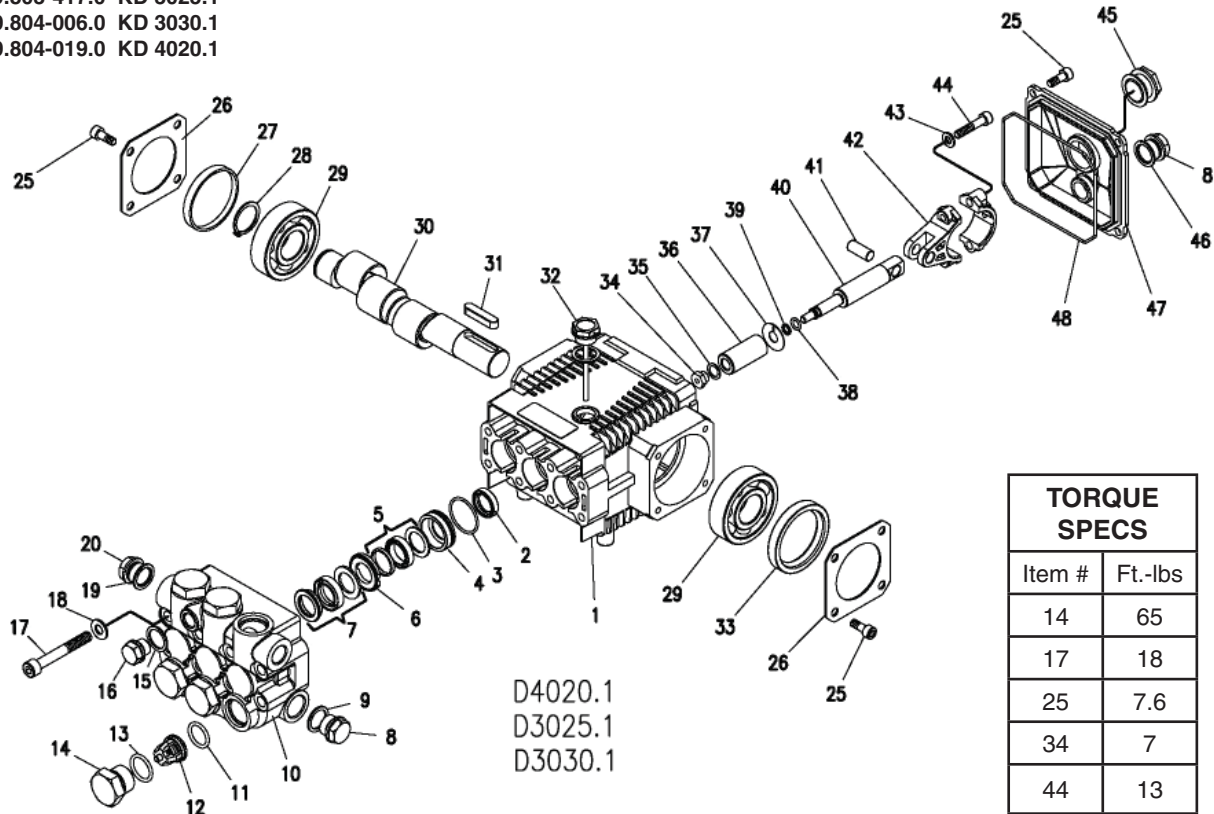


UU1 UNLOADER EXPLODED VIEW PARTS LIST

ITEM	PART #	DESCRIPTION	KIT	QTY	ITEM	PART #	DESCRIPTION	KIT	QTY
1	8.751-394.0	Piston Housing	D	1	17	9.149-006.0	Sliding Connector Guide		1
2		Piston	C, D	1	18		O-Ring Backup 6 x 1.45 x 1.68	A, D	1
3		Piston O-Ring Back Up	A, D	1	19		Ball Housing Assy	C, D	1
4	8.749-796.0	Main Block		1	20		O-Ring 6.75 x 1.78 BN80	A, D	1
5	9.152-372.0	Piston Ring	D	1	21		Spring Seat	C, D	2
6		Ball Seat	C, D	1	22		Plunger Spring	B	1
7		O-Ring 10.5 ID x 1.5 CS	A,C,D	1	23	8.917-699.0	Banjo Bolt 1/2" Short		1
8		Plunger	B	1		8.917-700.0	Banjo Bolt 1/2"-1/4" NPT Short		1
9	9.152-016.0	Plunger Housing		1	24	8.917-698.0	Banjo Bolt 3/8" Short		1
10		Bypass Spring	C, D	1	25	9.802-893.0	Seal Washer 3/8"		2
11	9.149-001.0	Low Pressure Port		1	26	9.803-921.0	Seal Washer 1/2"		2
12	9.152-017.0	Sliding Connector, 30mm		1		9.802-893.0	Seal Washer 3/8"		2
	8.762-005.0	Sliding Connector, 40mm, Long		1	27		O-Ring 15 ID x 2CS	A,B,D	3
13	9.149-002.0	Sliding Connector H 1/2"		1	28	8.706-865.0	Plug, 1/4" Countersunk		1
	9.149-005.0	Sliding Connector H 3/8"		1	Kit A	9.104-038.0	O-Ring Repair Kit		
14	9.196-011.0	Plug 5/8 -18 UNF	D	1	Kit B	9.104-039.0	Outlet Kit		
15		O-Ring 12 ID x 2 CS	A, D	2	Kit C	9.104-040.0	Stem Basic Kit		
16		O-Ring 6 ID X 2 CS	A, D	1	Kit D	8.920-045.0	UU1 Complete Stem Kit		

KD.1 SERIES PUMP EXPLODED VIEW

9.803-417.0 KD 3025.1
 9.804-006.0 KD 3030.1
 9.804-019.0 KD 4020.1



D4020.1
 D3025.1
 D3030.1

TORQUE SPECS	
Item #	Ft.-lbs
14	65
17	18
25	7.6
34	7
44	13

KD.1 SERIES PUMP EXPLODED VIEW PARTS LIST

ITEM	PART NO.	DESCRIPTION	QTY	ITEM	PART NO.	DESCRIPTION	QTY
1	9.803-938.0	Crankcase	1	11*	9.803-947.0	O-Ring Ø1.78 x 15.54	6
2*	See Kits Below	Plunger Oil Seal	3	12*	See Kits Below	Valve Assembly	6
3*	See Kits Below	O-Ring Ø1.78 x 28.30	3	13*	9.803-948.0	O-Ring Ø2.62 x 18.77	6
4*	See Kits Below	Pressure Ring 15mm (3030)	3	14	9.803-949.0	Valve Plug	6
	See Kits Below	Pressure Ring 18mm (4020, 3025)	3	15	9.803-950.0	Copper Washer 1/4	1
5*	See Kits Below	U-Seal, 15mm (3030)	3	16	9.803-951.0	Brass Plug G1/4	1
	See Kits Below	U-Seal, 18mm (4020, 3025)	3	17	9.803-952.0	Manifold Stud Bolt	8
6*	See Kits Below	Intermediate Ring 15mm (3030)	3	18	9.802-884.0	Washer	8
	See Kits Below	Intermediate 18mm (4020, 3025)	3	19	9.803-198.0	Copper Washer 3/8	1
7*	See Kits Below	Intermed. Ring 15mm (3030)	3	20	9.802-925.0	Brass Plug 3/8	2
	See Kits Below	Intermed. Ring 18mm (4020, 3025)	3	25	9.802-939.0	Screw	12
8	9.802-926.0	Brass Plug 1/2"	1	26	9.803-953.0	Bearing Cover	2
9	9.803-199.0	Copper Washer 1/2"	1	27	9.803-954.0	Bearing Seal	1
10	9.803-946.0	Manifold Housing	1	28	9.802-914.0	Snap Ring	1
				29	9.803-955.0	Ball Bearing	2
				30	9.803-956.0	Crankshaft	1
				31	9.803-167.0	Crankshaft Key	1
				32	9.803-957.0	Oil Dipstick	1

KD.1 SERIES PUMP EXPLODED VIEW PARTS LIST

ITEM	PART NO.	DESCRIPTION	QTY
33	8.933-010.0	Crankshaft Seal	1
34*	See Kits Below	Plunger Nut	3
35*	See Kit Below	Copper Spacer	3
36*	See Kits Below	Plunger, 15mm (3030)	3
	See Kits Below	Plunger, 18mm (4020, 3025)	3
37*	See Kits Below	Copper Spacer	3
38*	See Kits Below	O-Ring Ø1.78 x 5.28	3
39*	See Kits Below	Teflon Ring	3
40*	See Kits Below	Plunger Rod	3
41	9.803-965.0	Connecting Rod Pin	3
42	9.803-966.0	Connecting Rod	3
43	9.803-218.0	Spring Washer	6
44	8.933-020.0	Connecting Rod Screw	6
45	9.803-202.0	Sight Glass	1
46	9.803-197.0	Gasket	1
47	9.803-968.0	Crankcase Cover	1
48	9.803-969.0	O-Ring Ø2.62 x 107.62	

* Available in kit (See below)

REPAIR KIT NUMBER	8.725-354.0	8.725-356.0	8.725-355.0	8.725-357.0	9.803-934.0	9.803-935.0	9.803-936.0	9.803-937.0
Kit Description	Plunger Seal 15mm LD-3030	Plunger Seal 18mm LD-3025 LD-4020	Complete Seal Packing, 15mm LD-3030	Complete Seal Packing, 18mm LD-3025 LD-4020	Plunger 15mm LD-3030	Plunger 18mm LD-3025 LD4020	Complete Valve	Plunger Oil Seals
ITEM NUMBERS INCLUDED	3, 5, 7	3, 5, 7	3, 4, 5, 6, 7	3, 4, 5, 6, 7,	34, 35, 36, 37, 38	34, 35, 36, 37, 38	11, 12, 13	2
NUMBER OF CYLINDERS KIT WILL SERVICE	3	3	1	1	1	1	6	3

**LIMITED NEW PRODUCT
WARRANTY—COMMERCIAL
PRESSURE WASHERS**



Phone: 888-805-9852
Fax: 800-248-8409
www.karchercommercial.com

WHAT THIS WARRANTY COVERS

All Kärcher commercial pressure washers are warranted by Kärcher to the original purchaser to be free from defects in materials and workmanship under normal use, for the periods specified below. This Limited Warranty, subject to the exclusions shown below, is calculated from the date of the original purchase, and applies to the original components only. Any parts replaced under this warranty will assume the remainder of the pressure washer's warranty period.

SEVEN YEAR PARTS AND ONE YEAR LABOR WARRANTY

Components manufactured by Kärcher, such as frames, handles, top and bottom wraps, float tanks, fuel tanks, and belt guards. Xpert Series cold water pressure washer have a three-year frame warranty. Internal components on the oil-end of Kärcher Classic series, electric powered axial pumps have a 5 year warranty. Period of warranty on gas-engine axial pumps shall be one year; Kärcher crankshaft pumps have a 7 year warranty on non-wear parts. Heating coils have a five year warranty from date of original machine purchase; stainless steel coils have a 10 year warranty.

ONE YEAR PARTS AND ONE YEAR LABOR WARRANTY

All other components, excluding normal wear items as described below, will be warranted for one year on parts and labor. Parts and labor warranty on these parts will be for one year regardless of the duration of the original component manufacturer's part warranty.

WARRANTY PROVIDED BY OTHER MANUFACTURERS

Motors, generators, and engines, which are warranted by their respective manufacturers, are serviced through these manufacturers' local authorized service centers. Kärcher is not authorized and has no responsibility to provide warranty service for such components. Motors manufactured outside of the United States will be warranted by Kärcher.

WHAT THIS WARRANTY DOES NOT COVER

This warranty does not cover the following items:

1. Normal wear items, such as nozzles, spray guns, discharge hoses, wands, quick couplers, seals, filters, gaskets, O-rings, packings, pistons, pump valve assemblies, strainers, belts, brushes, rupture disks, fuses, pump protectors.
2. Any components or other devices incorporated into a Kärcher product that are not manufactured by Kärcher, including, but not limited to gasoline engines, pumps, etc.
3. Defects caused by improper or negligent operation or installation, accident, abuse, misuse, neglect, unauthorized modifications, repair or maintenance of the product by persons other than authorized representatives of Kärcher, including, but not limited to, the failure of the Customer to comply with recommended product maintenance schedules.
4. Kärcher products that have been returned by the original Customer and are ultimately re-sold by an Authorized Servicing Dealer or other sales or service outlet to another purchaser.
5. Kärcher products that are sold by any distributor or retailer that is not an official authorized dealer or retailer of Kärcher products.
6. Defects caused by acts of nature and disaster including, but not limited to, floods, fires, wind, freezing, earthquakes, tornadoes, hurricanes and lightning strikes.
7. Defects caused by water sediments, rust corrosion, thermal expansion, scale deposits or a contaminated water supply (such as water in the unit with chloride content higher than that of 80 mg/liter or use of chemicals not approved or recommended by Kärcher).
8. Defects caused by improper voltage, voltage spikes or power transients in the electrical supply.
9. Devices or accessories not distributed or approved by Kärcher.
10. Any cost of labor arising from the removal and reinstallation of the alleged defective part by Customer.
11. Transportation of the product to an Authorized Servicing Dealer, field labor, replacement rental and any freight charges.

Any components, accessories or other devices provided with the product but not manufactured by Kärcher (such as engines, pumps, etc.) are subject to warranties and service through their respective manufacturers authorized service centers and according to the applicable terms and conditions of such manufacturers warranties. Such components or other devices not manufactured by Kärcher should be referred by the Customer to an authorized service center or their respective manufacturers for repair or replacement.

THE FOREGOING WARRANTY IS IN LIEU OF ALL OTHER WARRANTIES OF ANY KIND, WHETHER ARISING BY LAW, CUSTOM OR CONDUCT. KÄRCHER MAKES NO ADDITIONAL WARRANTIES, EITHER EXPRESSED OR IMPLIED, INCLUDING, WITHOUT LIMITATION, ANY EXPRESSED OR IMPLIED WARRANTIES OF MERCHANTABILITY OR FITNESS OF EQUIPMENT FOR A PARTICULAR PURPOSE AND ANY SUCH WARRANTIES ARE EXPRESSLY DISCLAIMED. KÄRCHER FURTHER DISCLAIMS ANY WARRANTY THAT THE PRODUCT PURCHASED BY CUSTOMER WILL MEET ANY PARTICULAR REQUIREMENT OF CUSTOMER EVEN IF KÄRCHER HAS BEEN ADVISED OF SUCH REQUIREMENT.

THE RIGHTS AND REMEDIES PROVIDED UNDER THIS WARRANTY ARE EXCLUSIVE AND IN LIEU OF ANY OTHER RIGHTS OR REMEDIES OF CUSTOMER. KÄRCHER SHALL NOT UNDER ANY CIRCUMSTANCES BE LIABLE TO ANY PERSON OR ENTITY INCLUDING, BUT NOT LIMITED TO, THE CUSTOMER OR ANY END USER OF THE PRODUCT FOR ANY SPECIAL, INDIRECT, INCIDENTAL OR CONSEQUENTIAL DAMAGES OR ECONOMIC LOSS, LOSS OF PROFITS OR LOSS OF USE OF THE PRODUCT, ARISING IN CONNECTION WITH THE SALE, DELIVERY, INSTALLATION, TRAINING OR USE OF PRODUCT.

KÄRCHER'S LIABILITY, WHETHER IN CONTRACT OR IN TORT, ARISING OUT OF ANY WARRANTIES OR REPRESENTATIONS, INSTRUCTIONS OR DEFECTS FROM ANY CAUSE, SHALL BE LIMITED EXCLUSIVELY TO THE COST OF REPAIR OR REPLACEMENT PARTS UNDER AFORESAID CONDITIONS.

The purpose of the foregoing limitations on liability and Customer remedies is to protect Kärcher from unknown or undeterminable risks. Some states do not allow the exclusion or limitation of incidental or consequential damages, so the above limitation or exclusion may not apply to the Customer.

Kärcher sales and service representatives are not authorized to waive or alter the terms of this warranty, or to increase the obligations of Kärcher under the warranty.

Kärcher reserves the right to make design changes in any of its products without prior notification to the Customer.



www.karchercommercial.com

Form # 9.800-083.0 • Revised 01/13 • Printed in U.S.A. or Mexico