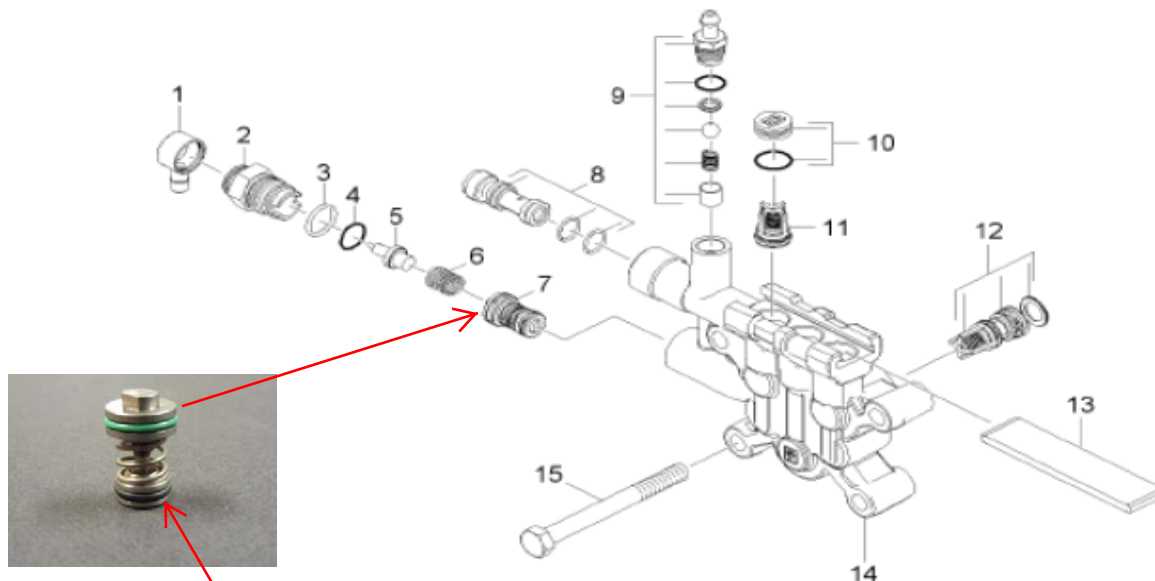




9175-0050 SPILL VALVE INSTRUCTIONS



Part # 7 makes up Part # 9175-0050 Spill (Unloader) Valve
For pump assemblies 8920-0040, 9120-0200, 9120-0210 & 8919-8860
using Cylinder Head 9135-0150

Remove Spill Valve by first removing the Thermal Relief Valve (part #'s 1, 2, 5 & 6). Grasping the knob at the top of the valve (# 7) with a needle-nose vice grip and pulling straight out. The Spill Valve is seated in the housing with a set of o-rings (shown on the valve by darken outline) so there will be a slight resistance.

When the valve is removed use a damp cloth to clean the valve and verify that there are no cuts, tears or damage to the o-rings. If possible clean and inspect the bore in the housing for pits or build up.

Next lubricate the top **green** o-ring of the Spill Valve generously with silicone grease; **DO NOT LUBRICATE THE LOWER BLACK O-RING**. The lower o-ring holds the valve in place. The lubrication on the top o-ring allows the valve to open and close properly. Reinstall the valve and make sure that it is seated all the way to the bottom.

R.J. BOWERS DISTRIBUTORS INC.

2003 Harrison Av
Rockford, IL 61104

WEB: www.rjbowers.com

800-383-6584

FAX: 815-399-8839

e-mail: parts@rjbowers.com