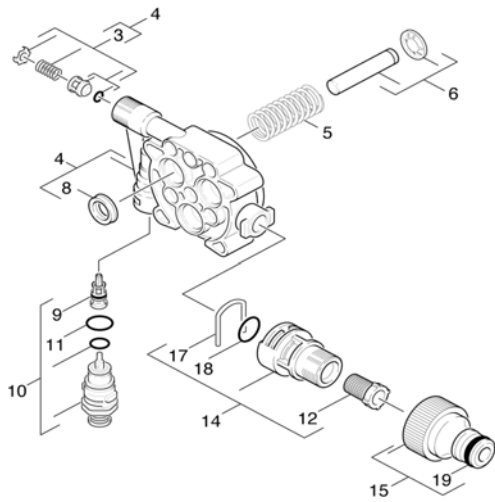


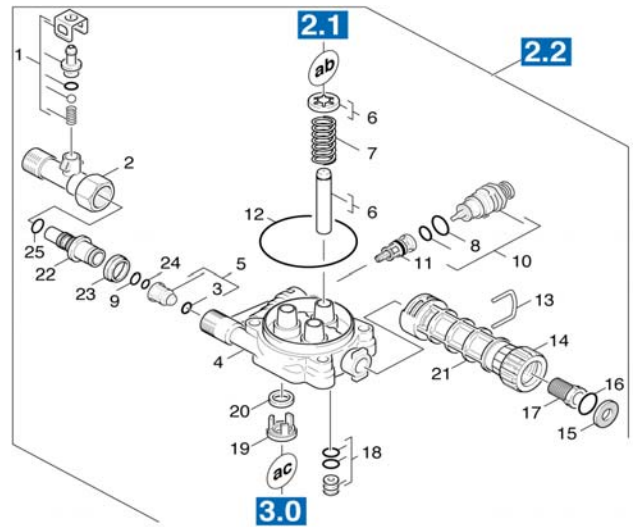


9001-1350 BYPASS VALVE INSTRUCTIONS



#10 (including #'s 9 & 11)

OR



#10 (including #'s 8 & 11)



1

2

3

Lubricate all o-rings with silicone grease or a white plumbers lithium grease; any type of lubricant that is **not petroleum based**.

Before installing make sure that the boring area for this valve is clear & free of debris & old valve parts.

- 1) This valve seat goes into the machine first; stem pointed inward, rounded end with o-ring facing outward.
- 2) The rounded end "fits on" the curved end of the seat.
- 3) Using a 24mm 6-point (hex) socket, push in then turn plastic valve body 1/4 to 1/2 clockwise until ears / tabs catch. **Using an open end, crescent or channel lock wrench may crack or damage valve while installing.**

R.J. BOWERS DISTRIBUTORS INC.

2003 Harrison Av
Rockford, IL 61104

WEB: www.rjbowers.com

800-383-6584

FAX: 815-399-8839

e-mail: parts@rjbowers.com