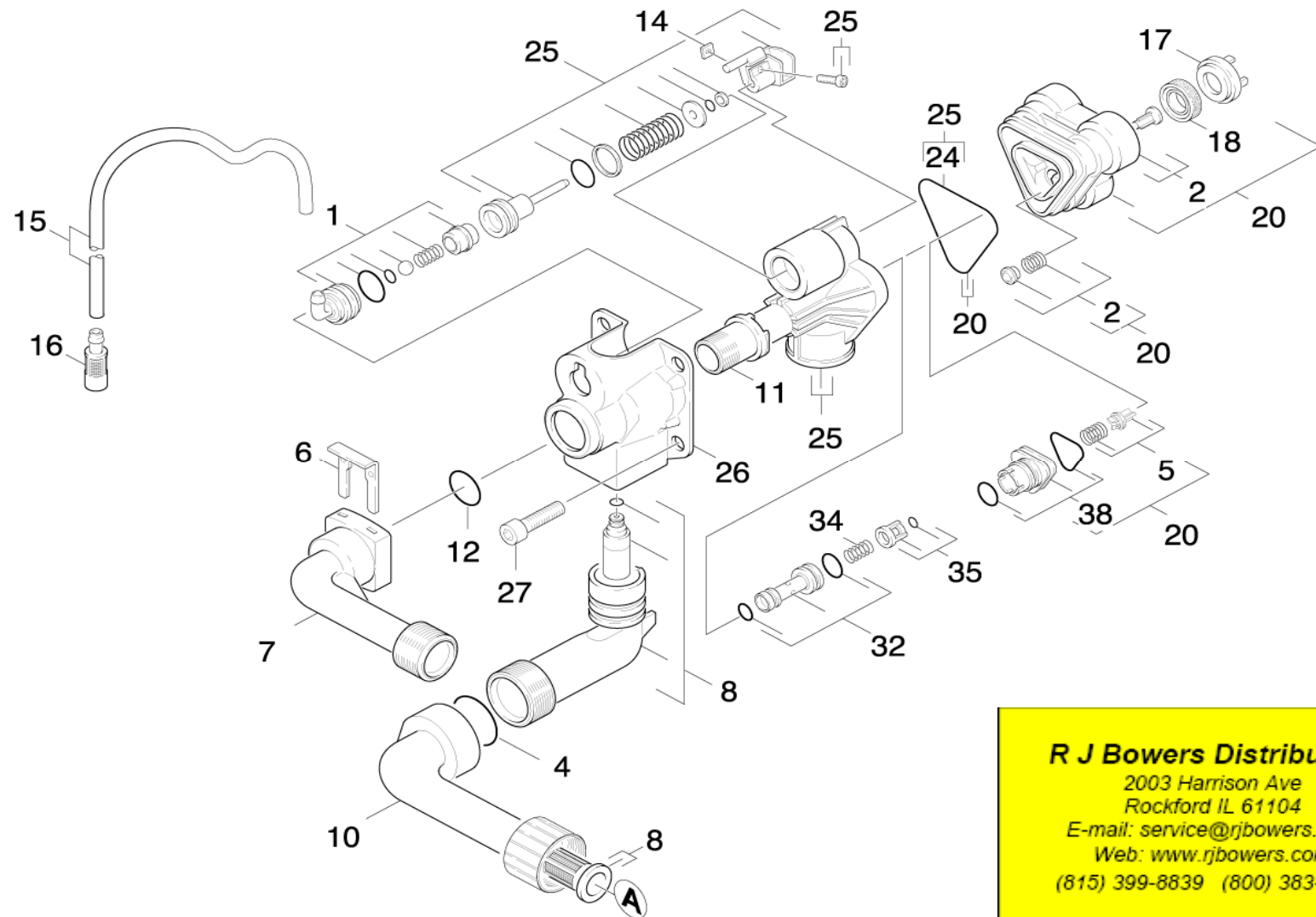


CONTROL HEAD (9.001-104.0) REPLACEMENT



Parts that need to be **removed** from the old pump (# 25) and **reinstalled** in new one (9.001-104.0)

1: Detergent Inlet Assembly (use pliers and pull straight out)

#32: Nozzle Insert w/2 o-rings

#34: Spring

#35: Cage w/o-ring on top

#11: High Pressure outlet Sleeve (some models may or may not have this part)

NO #: Check Valve inserted in bottom of #25 (part of Water Inlet Elbow #8)

#12: O-Ring for HP Outlet Elbow (#7). Confirm when removing #7, #12 o-ring may be inside #7 or #11

#27: Need 6mm Allen Wrench to remove.

****Make sure that black lever from electric box (not shown) rests inside of cradle next to silver screw head (#14 & 25).**

If lever is located outside of cradle, pump will not turn on