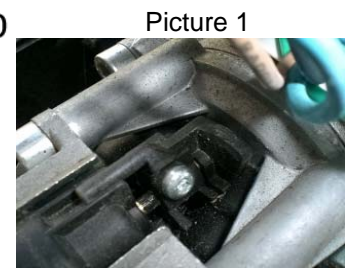
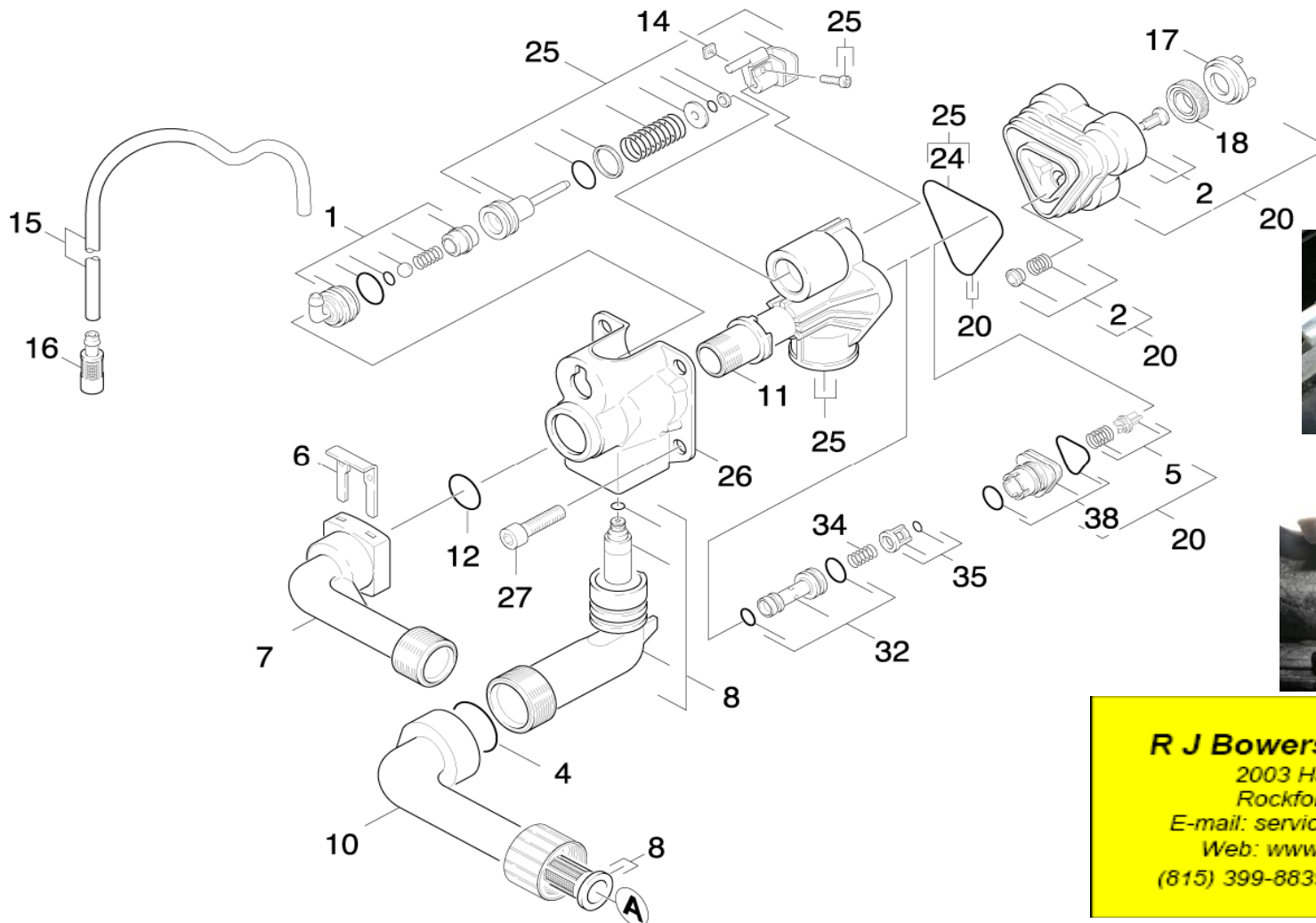


# CONTROL HEAD (9.001-104.0) REPLACEMENT



Picture 1



Picture 2

**R J Bowers Distributors**  
 2003 Harrison Ave  
 Rockford IL 61104  
 E-mail: [service@rjbowers.com](mailto:service@rjbowers.com)  
 Web: [www.rjbowers.com](http://www.rjbowers.com)  
 (815) 399-8839 (800) 383-6584

Parts that need to be **removed** from old Control Head (#25) and **reinstalled** in new one (9.001-104.0)

- # 1: Detergent Inlet Assembly (use pliers and pull straight out)
- #15: Washer
- #16: O-ring
- #25: Control Head Housing
- #26: Washer
- #27: Allen Wrench (6mm)
- #32: Nozzle Insert w/2 o-rings
- #34: Spring
- #35: Cage w/o-ring on top
- #11: High Pressure outlet Sleeve (some models may or may not have this part)
- NO #: Check Valve inserted in bottom of #25 (part of Water Inlet Elbow #8)
- #12: O-Ring for HP Outlet Elbow (#7). Confirm when removing #7, #12 o-ring may be inside of #7 or #11

When assembling #25 & #20, use even pressure on all 3 sides to ensure triangular gasket (#24) seals properly.

**\*\*Make sure that black lever from electric box (now shown) rests inside of cradel next to silver or black screw head (#14 & 25). If lever is located outside of cradle, pump will not turn on. See Pictures 1 & 2 for reference.**