

To remove 9 screws, you will need a T-15 Torx Driver or bit.



Internal parts of Trigger Gun
4775-2640 Version 1 (older style)

1)

4.775-264.0

Version 1

Trigger Gun

& Hose

Assembly



2)

Slide white plastic sleeve onto metal
pipe, place o-ring onto end of pipe.



Placement of brass manifold inside
trigger gun housing

3)

4)



Assembly of manifold, o-ring, plastic
sleeve & metal pipe



Placement of picture 4 components
in trigger gun housing.

5)

6)



Install & placement of spring at end of
barrel of trigger gun.



Install & placement of trigger handle.

7)

8)



Install & placement of trigger lock.



Install & placement of high pressure
hose.

9)

10)

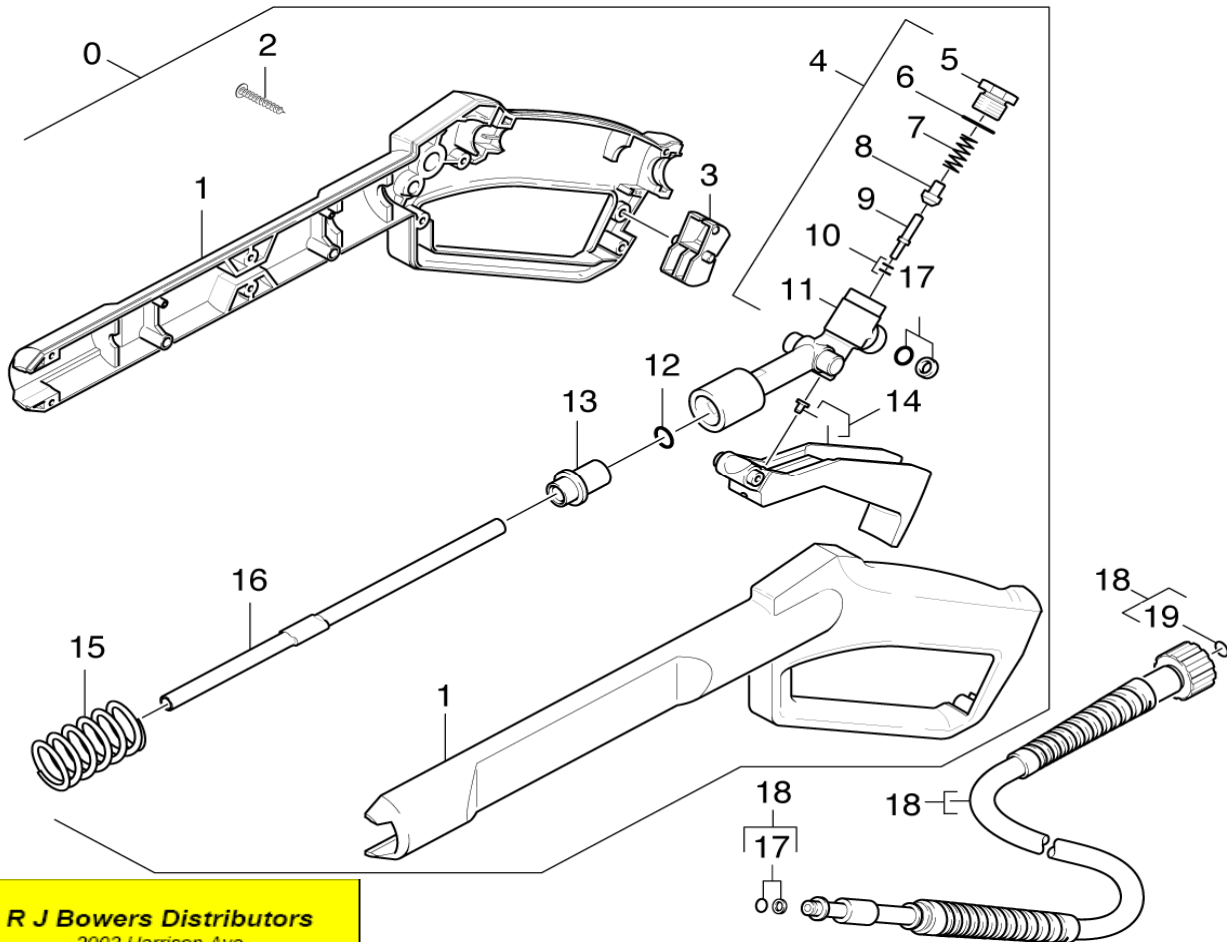


Final inside view of assembly with
hose.

R J Bowers Distributors
2003 Harrison Ave
Rockford IL 61104
E-mail: service@rjbowers.com
Web: www.rjbowers.com
(815) 399-8839 (800) 383-6584

PARTS BREAKDOWN FOR TRIGGER GUN (4.775-264.0) version 1

Location	PN	DESCRIPTION	QTY	SERIAL #	
				FROM	TO
0	4775-2640	Trigger Gun	1		
1	5321-4190	Handhold few	1		
2	6303-1220	M4.2X13 Torx T-15	9		
3	5481-0520	Lever	1		
4	4427-1500	Kit	1		
5	5411-0540	Screw plug	1		
6	6362-4800	O-Ring Seal 12.42x1.78	1		
7	5332-1570	Helical spring	1		
8	5582-0580	Valve disc	1		
9	5107-0670	Bar	1		
10	7362-5020	O-Ring Seal 2.8x1.6	1		
11		Brass Manifold (Stockpiling discontinued)	1		
12	6362-8020	O-Ring Seal 7.8x3.6	1		
13	5110-4770	Sleeve	1		
14	4481-0350	Lever	1		
15	5332-2470	Helical spring	1		
16	5028-4860	Screw Union	1		
17	6363-1150	O-Ring seal complete	1		
18	6389-5550	High pressure hose 15MPa 9m	1		
19	2880-2960	O-Ring Seal 10.0x2.0 (5 Pack)	1		



R J Bowers Distributors
 2003 Harrison Ave
 Rockford IL 61104
 E-mail: service@rjbowers.com
 Web: www.rjbowers.com
 (615) 399-8839 (800) 383-6584