

To remove 9 screws, you will need a T-15 Torx driver or bit.



Internal parts of Trigger Gun 4775-2640

1)

2)

4.775-264.0

TRIGGER GUN & HOSE



Place large spring in grooved area on barrel & place trigger handle into housing



Brass manifold, o-ring, plastic sleeve & pipe

3)

4)

ASSEMBLY



How manifold, o-ring, plastic sleeve & pipe looked assembled.



Insert brass manifold through trigger handle

5)

6)



Insert o-ring, plastic sleeve & pipe through trigger handle into brass manifold



Plunger bar, valve disc & spring in order of insert into brass manifold

7)

8)



Looking into bottom of brass manifold showing spring only



Final inside view of assembly with hose

9)

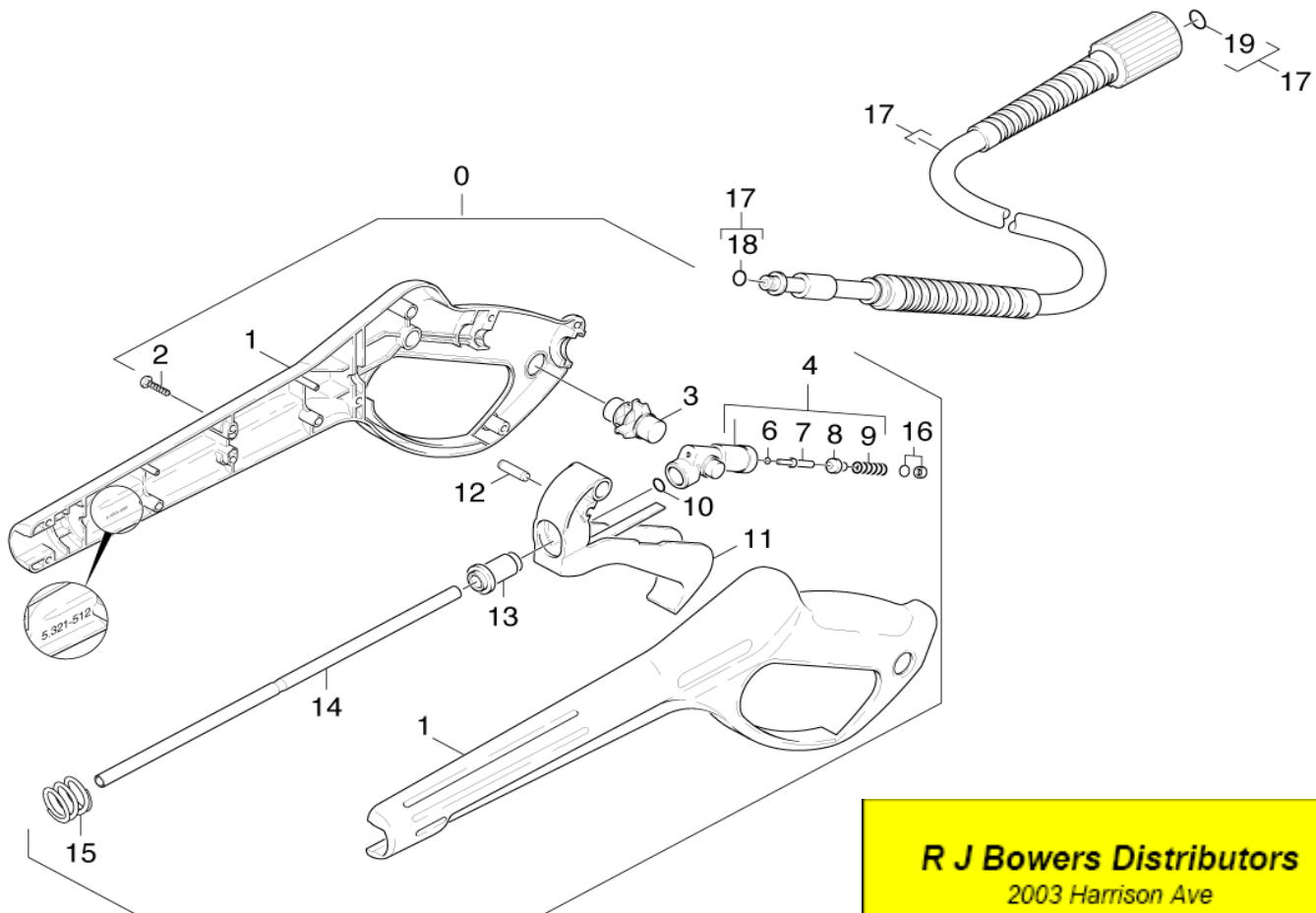
10)



Close-up view of final assembly with hose

PARTS BREAKDOWN FOR TRIGGER GUN (4.775-264.0)

Location	PN	DESCRIPTION	QTY	SERIAL #	
				FROM	TO
0	4775-2640	TRIGGER GUN (Complete)	1		
1	5321-5120	Handhold few	1		
2	6303-1220	M4 .2x13 DIN 7981 T-15 Torx Screw	9		
3	5481-1890	Lever	1		
4	4427-1780	Manifold	1		
6	7362-5020	O-Ring Seal 2.8x1.6	1		
7	5107-1470	Bar	1		
8	5582-0580	Valve Disc	1		
9	5332-1570	Helical spring	1		
10	6362-4790	O-Ring Seal 7.59x2.62	1		
11	4481-1050	Lever	1		
12	5314-0820	Pin	1		
13	5110-5390	Sleeve	1		
14	5028-9050	Pipe	1		
15	5332-3490	Pressure Spring	1		
16	6363-1980	O-Ring seal 6x2 90	1		
17	6389-5550	High Pressure Hose 9m/16M	1		
18	6363-1150	O-Ring Seal	1		
19	2880-1540	O-Ring Kit	1		



R J Bowers Distributors
 2003 Harrison Ave
 Rockford IL 61104
 E-mail: service@rjbowers.com
 Web: www.rjbowers.com
 (815) 399-8839 (800) 383-6584