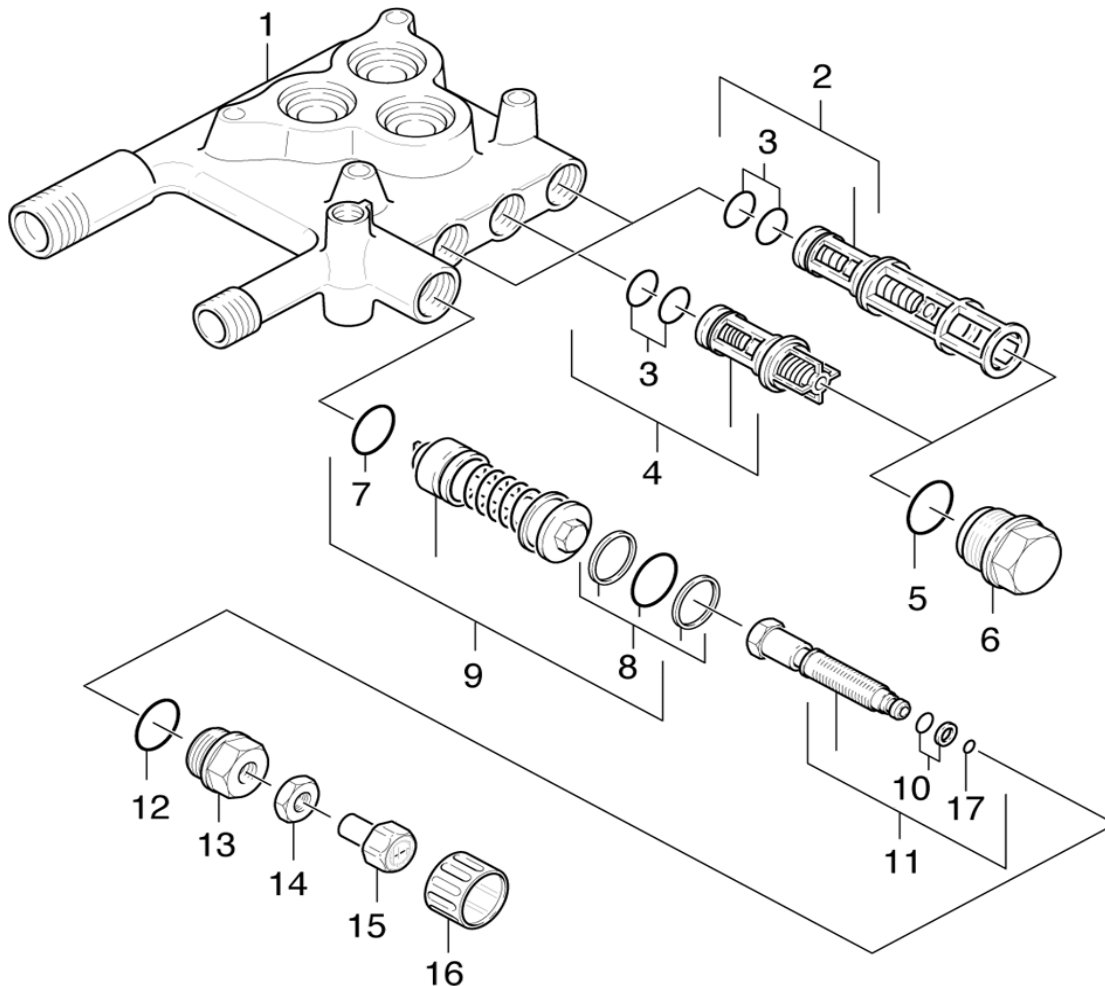


## 4580-2090 SPILL VALVE INSTRUCTIONS



Part 9 (includes 7 & 8) make up Part # 4580-2090 Spill (Unloader) Valve

Remove Spill Valve by grasping the knob at the top of the valve (# 9) with a needle-nose vice grip and pulling straight up. The Spill Valve is seated in the housing with 2 sets of o-rings (#'s 7 & 8) so there will be a slight resistance.

When the valve is removed use a damp cloth to clean the valve and verify that there are no cuts, tears or damage to the o-rings. If possible clean and inspect the bore in the housing for pits or build up.

Next lubricate the top set 3 of o-rings (# 8) of the Spill Valve generously with silicone grease; **DO NOT LUBRICATE THE LOWER O-RING (# 7)**. The lower o-ring holds the valve in place. The lubrication on the top 3 o-rings allow the valve to open and close properly. Reinstall the valve and make sure that it is seated all the way to the bottom.

### R.J. BOWERS DISTRIBUTORS INC.

2003 Harrison Av  
Rockford, IL 61104

WEB: [www.rjbowers.com](http://www.rjbowers.com)

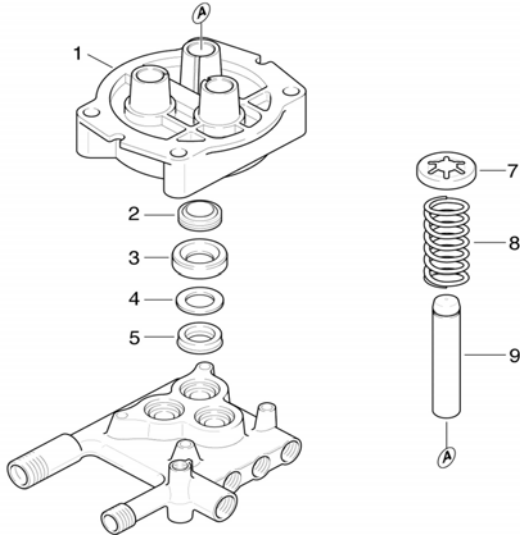
800-383-6584

FAX: 815-399-8839

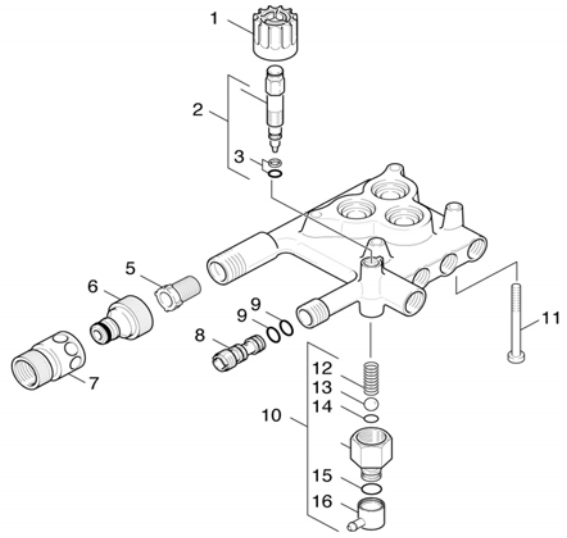
e-mail: [parts@rjbowers.com](mailto:parts@rjbowers.com)

4580-2090 SPILL VALVE INSTRUCTIONS

K 1750G (1.184-116.0) PUMP BREAKDOWN

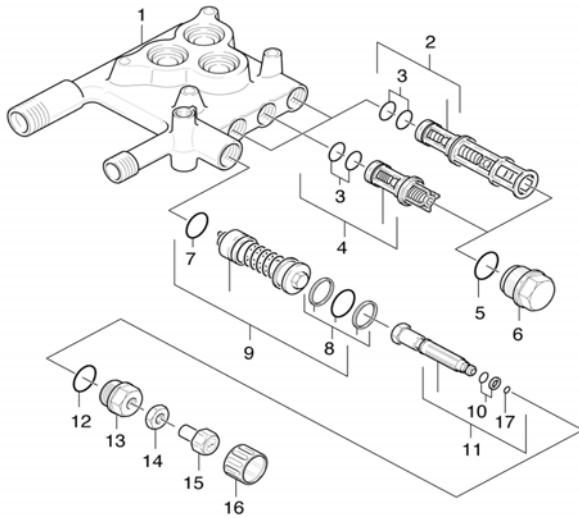


**PISTON 2.1**



**CHEMISTRY 2.2**

**VALVES 2.3**



**R.J. BOWERS DISTRIBUTORS INC.**

2003 Harrison Av  
Rockford, IL 61104

WEB: [www.rjbowers.com](http://www.rjbowers.com)

800-383-6584

FAX: 815-399-8839

e-mail: [parts@rjbowers.com](mailto:parts@rjbowers.com)