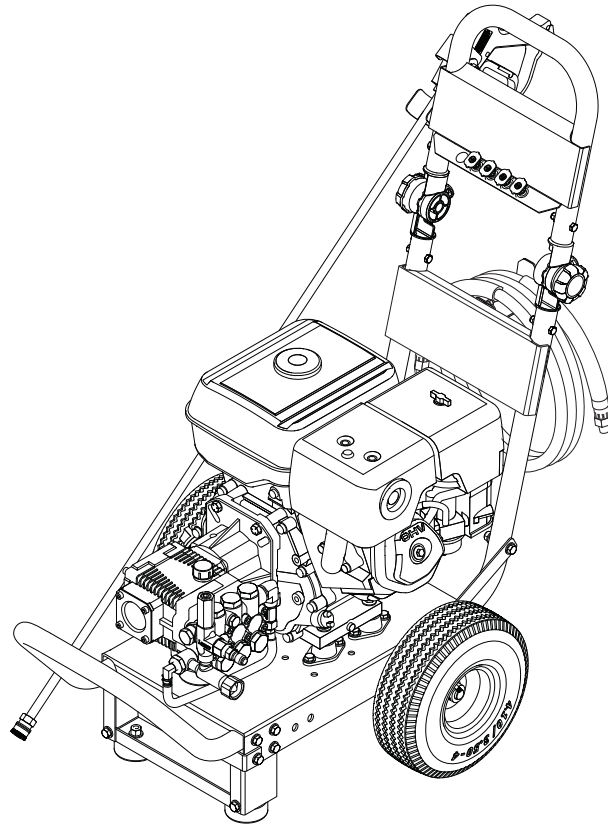


# SERVICE MANUAL



<u>MODEL #</u>	<u>ORDER #</u>
HD 2.5/27 P AL	1.107-129.0
HD 3.0/30 P AL	1.107-130.0
HD 3.8/35 P AL	1.107-131.0
HD 3.5/40 P AL	1.107-227.0
PCA3-27324	1.107-124.0
PCA3-30324	1.107-125.0
PCA4-35324	1.107-126.0
PCA4-40324	1.107-228.0
DBA-252739	1.107-117.0
DBA-303039	1.107-118.0
DBA-383539	1.107-119.0
DBA-354039	1.107-226.0

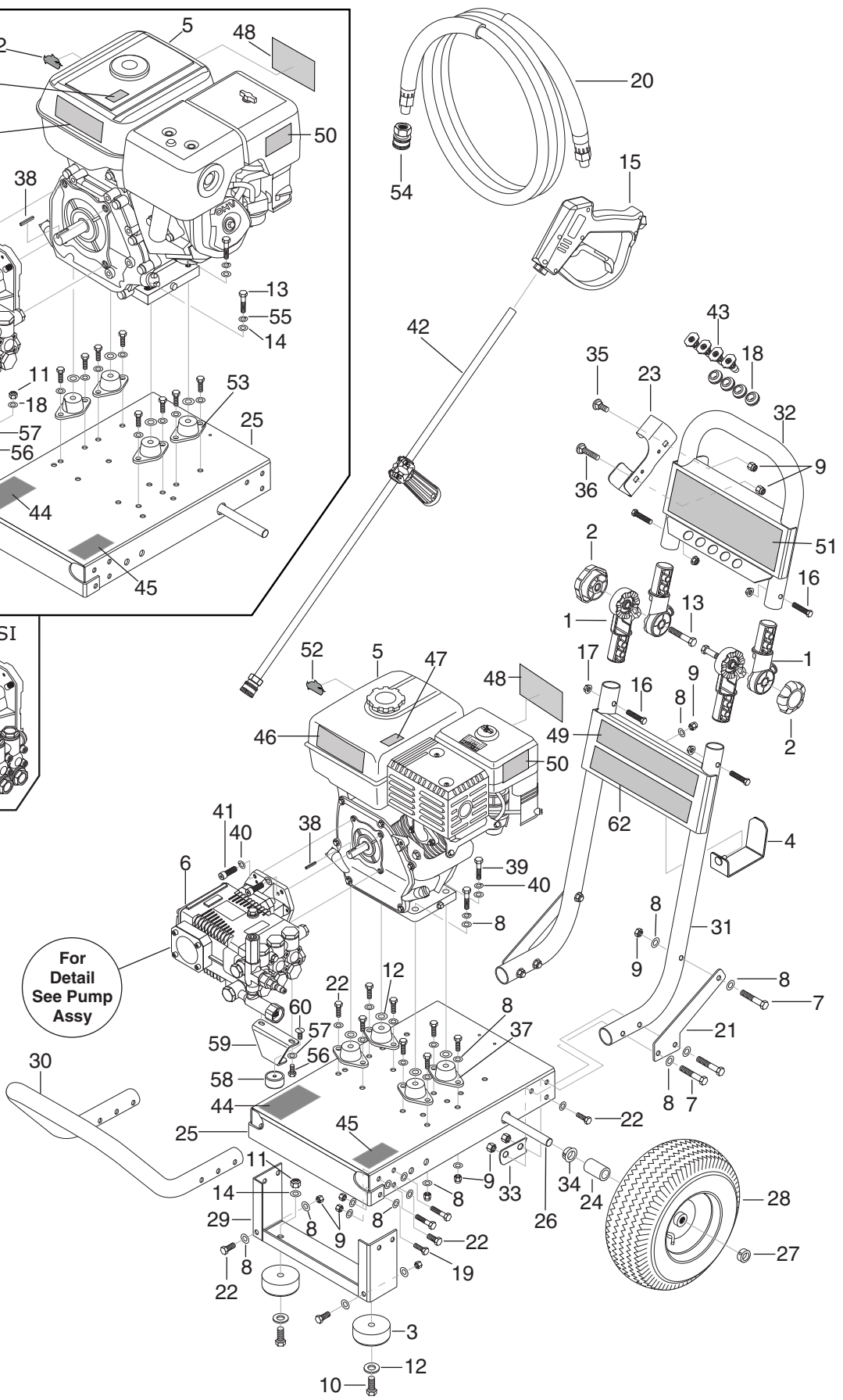
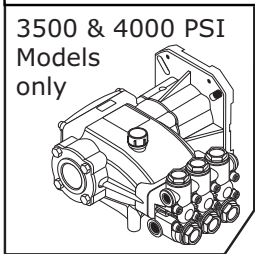
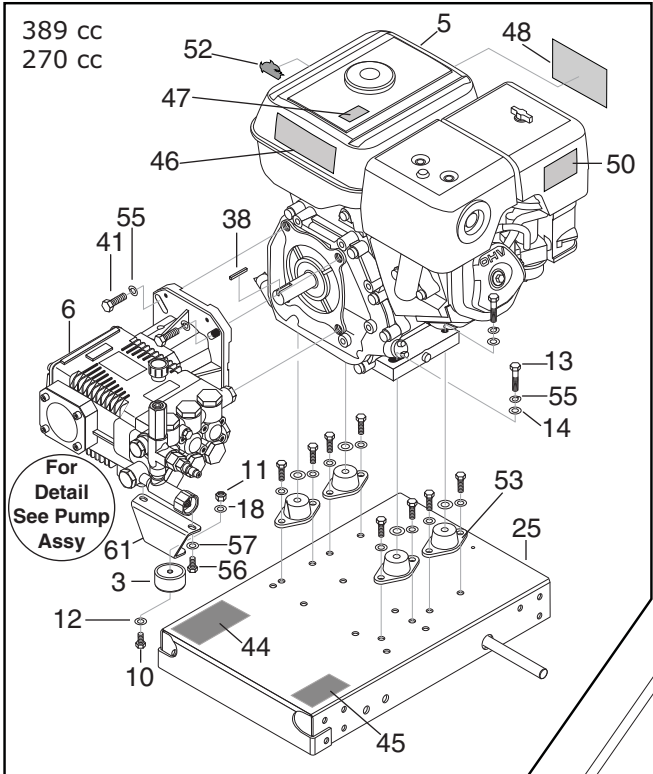
<u>MODEL #</u>	<u>ORDER #</u>
DGA-252737	1.106-054.0
	1.107-247.0
DGA-303037	1.106-055.0
	1.107-248.0
DGA-383537	1.106-056.0
	1.107-249.0
DGA-354037	1.107-229.0
	1.107-250.0

# CONTENTS

---

Exploded View .....	4
Exploded View Parts List .....	5-6
SG.3 Pump Exploded View and Parts List .....	7-9
G3035G Pump Exploded View and Parts List .....	10-12
G2530G Pump Exploded View and Parts List .....	13-15
UU1 Unloader Exploded View and Parts List .....	16
VBA Unloader Exploded View and Parts List .....	17
Troubleshooting .....	18-19
Preventive Maintenance .....	20
Oil Change Record .....	21

# EXPLODED VIEW



## EXPLODED VIEW PARTS LIST

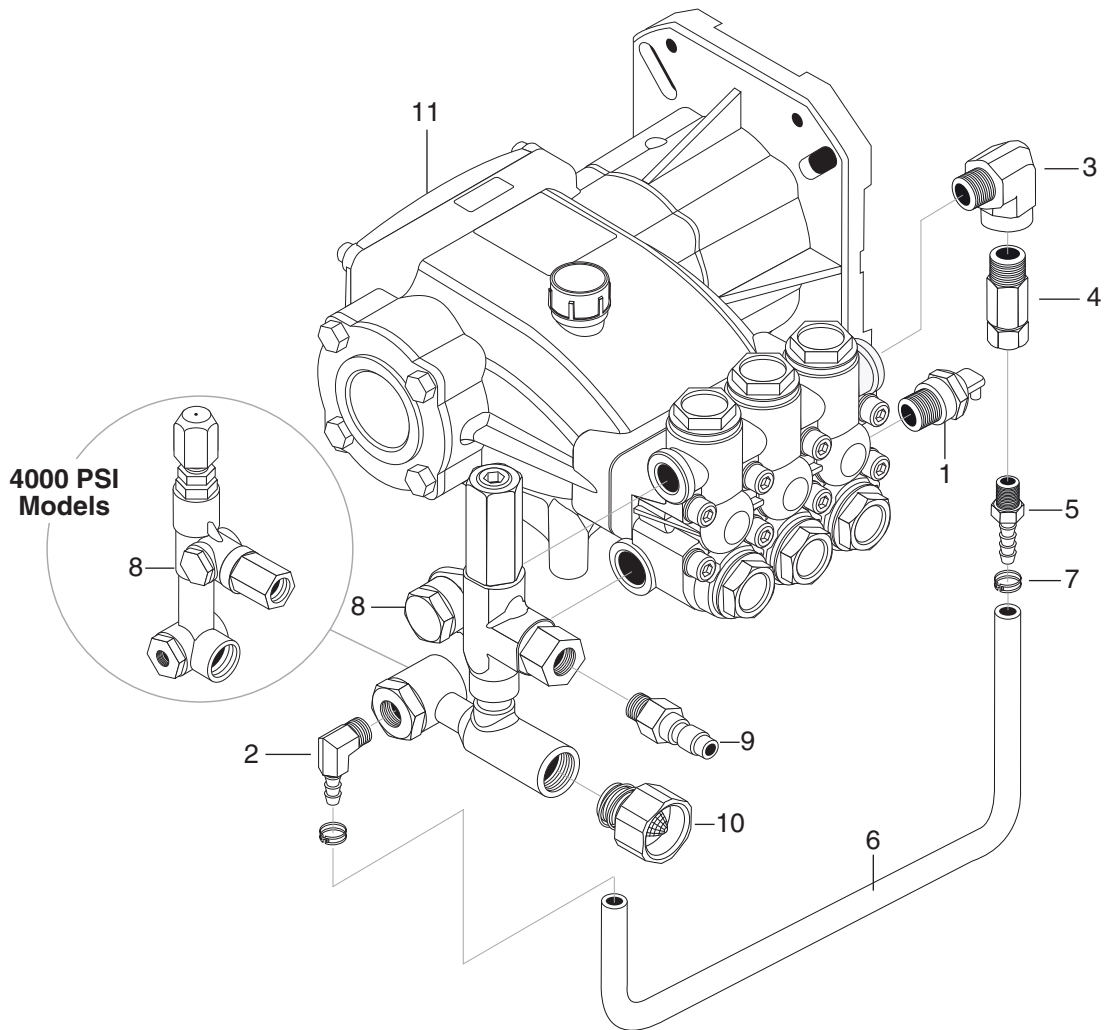
ITEM	PART NO.	DESCRIPTION	QTY
1	9.135-007.0	Rotary Tube-Joint	4
2	9.136-502.0	Knob	2
3	9.802-066.0	Pad Soft Rubber (270 cc, 389 cc)	3
		Pad Soft Rubber (196 cc)	2
4	8.919-796.0	Hose Hanger Al Frames	1
5	8.750-580.0	Engine, Honda GX390UT2QA2 (389 cc)	1
	8.750-680.0	Engine, Honda GX270UT2QAG2 (270 cc)	1
	9.802-317.0	Engine, Honda GX200UTQX2 (196 cc)	1
6		Pump Assy 4000 PSI (See S3540G.3 Specifications Pages)	1
		Pump Assy 3500 PSI (See S4040G.3 Specifications Pages)	1
		Pump Assy 3000 PSI (See G3035G Specifications Pages)	1
		Pump Assy 2700 PSI (See G2530G Specifications Pages)	1
7	9.802-716.0	Bolt, 5/16" x 2", NC HH	10
8	8.718-980.0	Washer, 5/16", FLAT, SAE(780452) (389 cc, 270 cc)	49
		(196 cc)	53
9	9.802-776.0	Nylon Insert Nut 5/16"	29
10	9.802-720.0	Bolt, 3/8" x 1", NC HH(612984) (389 cc, 270 cc)	3
		(196 cc)	2
11	9.197-003.0	3/8-16 NE Nylon Insert L/N ZC 5UM White (389 cc, 270 cc)	3
		(196 cc)	2
12	9.802-817.0	Flat Washer (389 cc, 270 cc)	7
		(196 cc)	6
13	9.196-041.0	Hex Head Bolt 3/8-16 x 1-3/4" (389 cc, 270 cc)	6
		(196 cc)	2
14	9.198-004.0	3/8 USS F/W Zinc (389 cc, 270 cc)	7
		(196 cc)	2
15	8.750-247.0	Trigger Gun Model M407	1
16	9.196-307.0	1/4-20 x 1-1/2" GR 2 Hex Bolt Zinc	4
17	9.197-010.0	1/4-20" Nylon Insert Lock Nut with Flange	4
18	9.802-064.0	Grommet, Rubber, Nozzle Holder	4
19	9.802-710.0	Screw 5/16" x 1" NC	2
20	8.739-011.0	▲ Hose, 3/8"x50', 1W, TS, SO x SW (DBA Models)	1
	8.739-026.0	▲ Hose, 3/8"x50', 1W, TS, SO x SW (PCA Models)	1
	8.739-021.0	▲ Hose, 3/8"x50', 1W, TS, SO x SW (HD and DGA Models)	1
21	8.921-257.0	Handle Stiffener AL	2
22	8.718-618.0	Bolt, 5/16" x 3/4" NC GR 5 CS ZN(61294)	14
23	8.918-437.0	Holder Wand Left Silver	1
24	8.918-079.0	Axle Spacer Silver Aluminum Direct Frame	2
25	8.921-255.0	Aluminum Base Direct Drive	1
26	9.803-097.0	Axle, 5/8" x 20.125" Long	1
27	9.802-782.0	Collar, 5/8" Bore Shaft 3010	2
28	8.754-186.0	Qh Wheel Assy, 10" Gray Steel Rim W/Tube	2
29	8.921-256.0	Foot AL Direct Frame	1
30	8.919-712.0	Aluminum Front Bumper Direct Drive	1
31	8.917-978.0	Handle Support Assy AL Direct Drive	1
32	8.917-976.0	Handle Assy AL Direct Drive	1
33	9.803-114.0	Retainer Bracket, Handle, Black	2
34	9.802-103.0	Bush 5/8" ID, 7/8 OD SB-875-10	2
35	8.718-625.0	Bolt, 5/16"-18 x 3/4", Nc Carriage znc 6159	1
36	9.802-712.0	Bolt, 5/16"-18 x 1-3/4", Nc Carriage z	1
37	9.803-308.0	Mount, Rubber Vibration 5/16", 70 Duro (196 cc)	4

## EXPLODED VIEW PARTS LIST (CONT)

ITEM	PART NO.	DESCRIPTION	QTY
38	9.802-959.0	Key, 0.247 SQR x 2.125" (270 cc, 389 cc)	1
	9.802-958.0	Key, 0.185 SQR x 1.750" (196 cc)	1
39	9.802-713.0	Bolt, 5/16" x 1-1/2", NC HH(612975)	4
40	9.802-813.0	Washer, 5/16 Lock Split Ring (51156560) (196 cc)	8
41	8.733-007.0	Socket Head 5/16-24 X 3/4 Zinc Plated (196 cc)	4
	9.802-722.0	Bolt, 3/8 x 1 1/4", NC HH (270 cc, 389 cc )	4
42	8.783-040.0	Wand 44" Zinc Plated, Handle & Coupler (270 cc, 389 cc)	1
	8.783-039.0	Wand 30" Zinc Plated, Handle & Coupler (196 cc)	1
43		Quick Connect Nozzle Kit (389 cc, Exept 3.5GPM@4000PSI Models)	1
	8.708-531.0	▲ Nozzle, QC, 1/4", #4.0 x 0, Red, Legacy	
	8.708-532.0	▲ Nozzle, QC, 1/4", #4.0 x 15, Yellow, Legacy	
	8.708-533.0	▲ Nozzle, QC, 1/4", #4.0 x 24, Green, Legacy	
	8.708-534.0	▲ Nozzle, QC, 1/4", #4.0 x 40, White, Legacy	
		Quick Connect Nozzle Kit (270 cc & 389cc 3.5GPM@4000PSI Models)	1
	8.723-577.0	▲ Nozzle, QC, 1/4", #3.5 x 0, Red, Legacy	
	8.726-104.0	▲ Nozzle, QC, 1/4", #3.5 x 15, Yellow, Legacy	
	8.708-526.0	▲ Nozzle, QC, 1/4", #3.5 x 25, Green, Legacy	
	8.902-487.0	▲ Nozzle, QC, 1/4", #3.5 x 40, White, Legacy	
43		Quick Connect Nozzle Kit (196 cc)	1
	8.723-576.0	▲ Nozzle, QC, 1/4", #3.0 x 0, Red, Legacy	
	8.902-482.0	▲ Nozzle, QC, 1/4", #3.0 x 15, Yellow, Legacy	
	8.902-484.0	▲ Nozzle, QC, 1/4", #3.0 x 25, Green, Legacy	
	8.902-485.0	▲ Nozzle, QC, 1/4", #3.0 x 40, White, Legacy	
44	8.930-124.0	Label, Intended For Outdoor Use - Mexico	1
45	8.783-038.0	Label, Universal DB Rating, Ear Protection	1
46	9.800-008.0	Label, Danger Cool Engine	1
47	9.800-006.0	Label, Hot/Caliente w/arrows	1
48	8.783-034.0	Label, Quick Start Guide	1
49	8.783-036.0	Label, Warning Pictogram	1
50	8.751-096.0	Label, Regulation 4442.6	1
51	8.750-284.0	Label, Name Plate (HD Models)	1
	8.750-285.0	Label, Name Plate (PCA Models)	1
	8.750-286.0	Label, Name Plate (DBA Models)	1
	8.750-714.0	Label, Name Plate (DGA Models ,Except below models)	1
	8.753-774.0	Label, Name Plate (247.0, 248.0, 249.0, & 250.0 DGA Models Only)	1
52	9.138-438.0	Label, Die - Cut (DGA models)	1
53	8.932-992.0	Mount, Rubber Vibration 3/8" (270 cc, 389 cc)	4
54	9.802-166.0	Coupler, 3/8"Socket, Female, Brass	1
55	9.802-814.0	Washer, 3/8" Split Ring Lock, Zinc (270 cc, 389 cc)	8
56	9.802-744.0	Bolt, 10mm x 20mm, HH Zinc (389 cc)	2
	9.802-741.0	Bolt, 8mm x 16 mm Hex Head (270 cc, 196 cc)	2
57	9.802-816.0	Washer, 7/16", Split Ring Lock, 780481 (389 cc )	2
	9.802-813.0	Washer, 5/16 Lock Split Ring (51156560) (270 cc, 196 cc)	2
58	9.183-409-0	Rubber Dampener 5/16"-18 Female 2001 (196 cc)	1
59	8.917-977.0	Pump Support LG Fab Black Wrinkle (196 cc)	1
60	9.196-308.0	5/16-18 x 1/2 Carriage Bolt A307 BLK (196 cc)	1
61	8.933-024.0	Rail, Pump Support (389 cc)	1
	9.804-533.0	Rail, Pump Support (270 cc)	1
62	8.750-809.0	Label Operation Warn Trilingual Small	1

▲ Not Shown

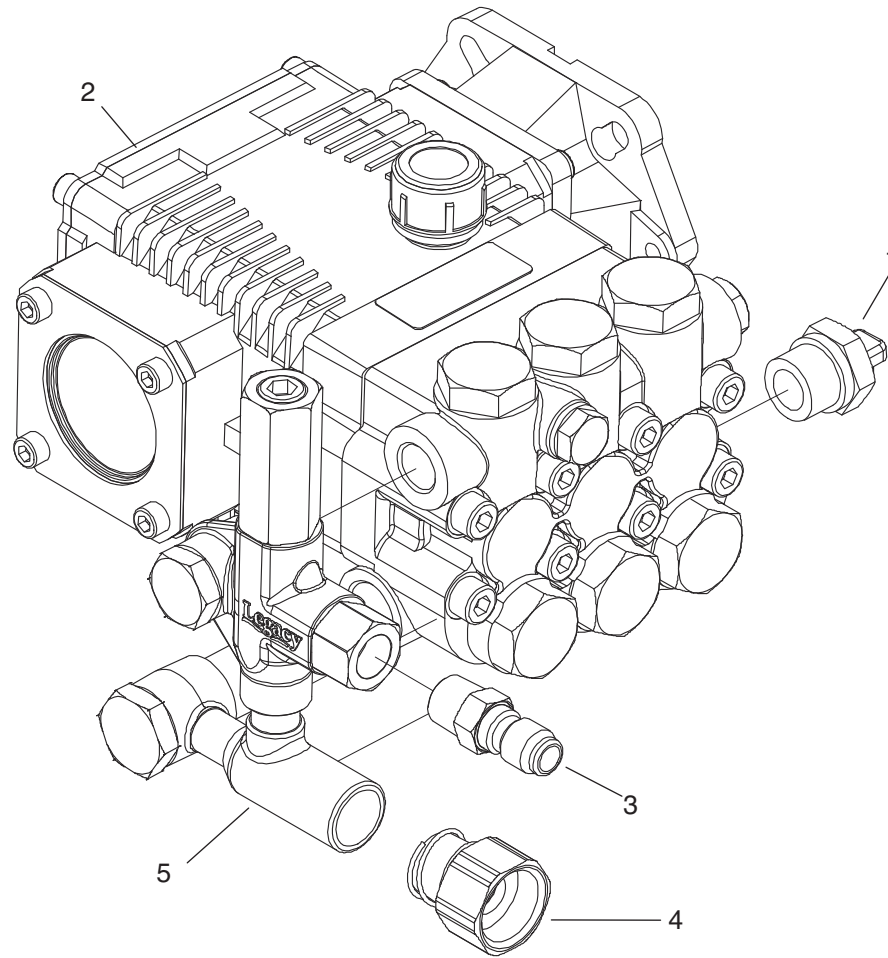
## S4040G.3 & S3540G.3 PUMP ASSEMBLY EXPLODED VIEW



### S4040G.3 & S3540G.3 PUMP ASSEMBLY PARTS LIST

ITEM	PART NO.	DESCRIPTION	QTY	ITEM	PART NO.	DESCRIPTION	QTY
1	8.707-256.0	Pump Protector, 1/2	1	11	8.751-195.0	Pump KS4040GR.3, 4@4000, 3400 RPM	1
2	8.706-958.0	Hose Barb 1/4" x 1/4" Pipe, 90 Deg	1		8.751-177.0	Pump LS4040GR.3, 4@4000, 3400 RPM	1
3	8.706-207.0	Elbow, 3/8", Street 90 Deg	1		8.751-184.0	Pump HS4040GR.3, 4@4000, 3400 RPM	1
4	9.802-190.0	Valve, EZ Start, 3/8 MPT x 1/8 FPT	1		8.751-194.0	Pump KS3540GR3, 3.5@4000 3400 RPM (4000 PSI Models)	1
5	8.706-940.0	Hose Barb, 1/4" Barb x 1/8" ML Pipe	1		8.751-176.0	Pump LS3540GR3, 3.5@4000 3400 RPM (4000 PSI Models)	1
6	9.802-254.0	Hose 1/4"	1.5 ft		8.751-183.0	Pump HS3540GR3, 3.5@4000 3400 RPM (4000 PSI Models)	1
7	6.390-126.0	Hose Clamp	2		8.921-766.0	Pump SS3540GR3, 3.5@4000 3400 RPM (4000 PSI Models)	1
8	9.175-013.0	Unloader, UU1 3500PSI Banjo 1/2"-1/4" NPT	1				
	9.803-900.0	Unloader VBA 4000 PSI Banjo 1/2"-1/4" NPT	1				
9	9.802-171.0	Nipple, 3/8" x 3/8" NPT St Male	1				
10	9.802-146.0	Swivel, 1/2" MP x 3/4" GHF W/Strainer	1				

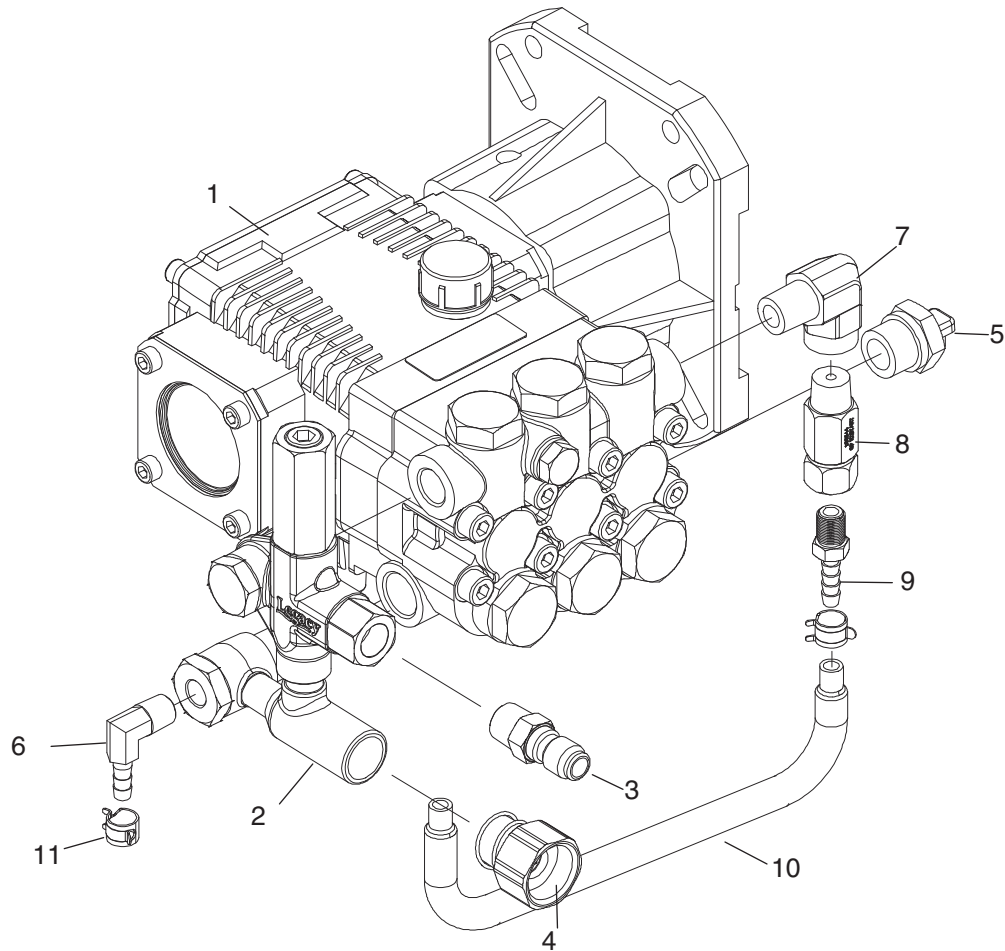
## G2530G PUMP ASSEMBLY EXPLODED VIEW



### G2530G PUMP ASSY EXPLODED VIEW PARTS LIST

ITEM	PART NO.	DESCRIPTION	QTY
1	8.707-256.0	Pump Protector, 1/2 PTP 140 DEG, P/N 1005	1
2	9.804-033.0	Pump, KG2530G 2.5@3000, 3400 RPM	1
	8.904-893.0	Pump, LG2530G 2.5@3000, 3400 RPM	1
	9.802-748.0	Pump, HG2530G 2.5@3000, 3400 RPM	1
3	9.802-171.0	Nipple, 3/8" x 3/8" NPT ST Male	1
4	9.802-146.0	Swivel, 1/2" MP x 3/4" GHF W/Strainer	1
5	9.175-012.0	Unloader, UU1 3500 PSI Banjo 1/2" Closed	2

# G3035G PUMP ASSEMBLY EXPLODED VIEW



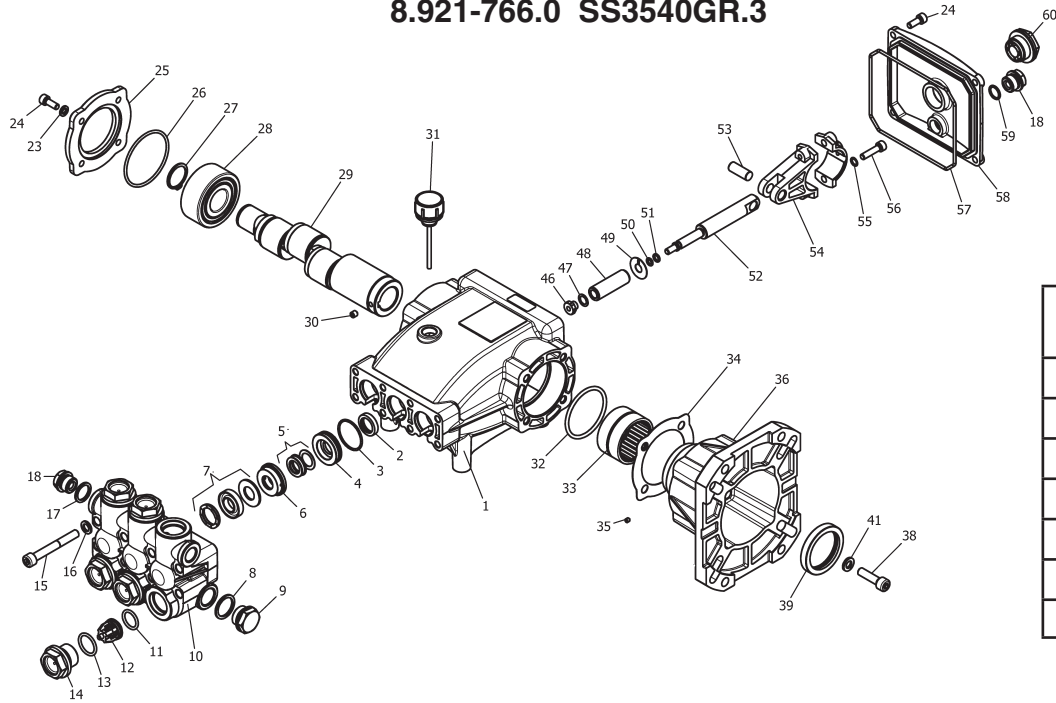
## G3035G PUMP ASSY EXPLODED VIEW PARTS LIST

ITEM	PART NO.	DESCRIPTION	QTY	ITEM	PART NO.	DESCRIPTION	QTY
1	9.803-819.0	Pump KG3035G1 3@3500,3400 RPM	1	8	9.802-190.0	Valve, EZ Start, 3/8" MPT x 1/8 FPT	1
	8.904-897.0	Pump LG3035G1 3@3500, 3400 RPM	1	9	8.706-940.0	Hose Barb, 1/4" Barb x 1/8" ML Pipe	1
	8.904-752.0	Pump HG3035G1 3@3500, 3400 RPM	1	10	9.802-254.0	Hose 1/4"	1.5 ft
2	9.175-013.0	Unloader, UU1 3500PSI Banjo 1/2"-1/4" NPT	1	11	6.390-126.0	Hose Clamp	2
3	9.802-171.0	Nipple, 3/8" x 3/8" NPT ST Male	1				
4	9.802-146.0	Swivel, 1/2" MP x 3/4" GHF W/Strainer	1				
5	8.707-256.0	Pump Protector, 1/2" PTP 140 DEG-p/n 1005	1				
6	8.706-958.0	Hose Barb, 1/4" Barb x 1/4" Pipe 90 D.	1				
7	8.706-207.0	Elbow, 3/8" Street 90 Deg p/n TF3409X6	1				



## S4040GR.3 & S3540GR.3 PUMP EXPLODED VIEW

8.751-195.0 KS4040GR.3	8.751-194.0 KS3540GR.3
8.751-177.0 LS4040GR.3	8.751-176.0 LS3540GR.3
8.751-184.0 HS4040GR.3	8.751-183.0 HS3540GR.3
	8.921-766.0 SS3540GR.3



TORQUE SPECS	
Item #	Ft.-lbs
14	75
15	30
24	7.6
38	10
46	7
56	13

## S4040GR.3 & S3540GR.3 PUMP PARTS LIST

ITEM	PART NO.	DESCRIPTION	QTY	ITEM	PART NO.	DESCRIPTION	QTY
1	8.751-217.0	Crankcase	1	26	8.717-225.0	O-Ring Ø 2.62 x 61.6	1
2*	See Kit Below	Plunger Oil Seal	3	27	9.802-914.0	Snap Ring	1
3*	See Kit Below	O-Ring Ø1.78 x 31.47	3	28	9.803-168.0	Double Row Ball Bearing	1
4*	See Kit Below	Pressure Ring	3	29	9.803-151.0	Crankshaft (3540G.3)	1
5*	See Kit Below	U-Seal, 15mm	3		9.803-152.0	Crankshaft (4040G.3)	1
6*	See Kit Below	Intermed. Ring 15mm	3	30	9.802-945.0	Set Screw	1
7*	See Kit Below	U-Seal, 15mm	3	31	9.802-921.0	Oil Dip Stick	1
8	9.803-199.0	Copper Washer 1/2"	1	32	9.804-581.0	O-Ring Ø 3.53 x 55.56	1
9	9.802-926.0	Brass Plug, 1/2"	1	33	9.803-161.0	Needle Roller Bearing	1
10	8.751-218.0	Manifold Housing	1	34	8.751-230.0	Gasket	1
11*	9.803-191.0	O-Ring Ø2.62 x 17.13	6	35	8.717-544.0	Screw, Set	1
12*	See Kit Below	Valve Assembly	6	36	9.803-183.0	Engine Flange	1
13*	9.803-193.0	O-Ring Ø2.62 x 20.29	6	38	9.803-240.0	Flange Screw	4
14	9.802-928.0	Valve Plug	6	39	9.803-142.0	Crankshaft Seal	1
15	9.802-938.0	Manifold Stud Bolt	8	41	9.803-221.0	Spring Washer	4
16	9.802-884.0	Washer	8	46*	See Kit Below	Plunger Nut, M6	3
17	9.803-198.0	Copper Washer 3/8"	1	47*	See Kit Below	Washer, Copper, 9.2 x 13.5	3
18	9.802-925.0	Brass Plug 3/8"	2	48*	See Kit Below	Plunger, 15mm	3
23	9.803-201.0	Washer, M6 x 16	4	49*	See Kit Below	Copper Spacer	3
24	9.802-939.0	Hexagonal Screw	9				
25	9.803-184.0	Closed Bearing Housing	1				

## S4040GR.3 & S3540GR.3 PUMP PARTS LIST (CONT.)

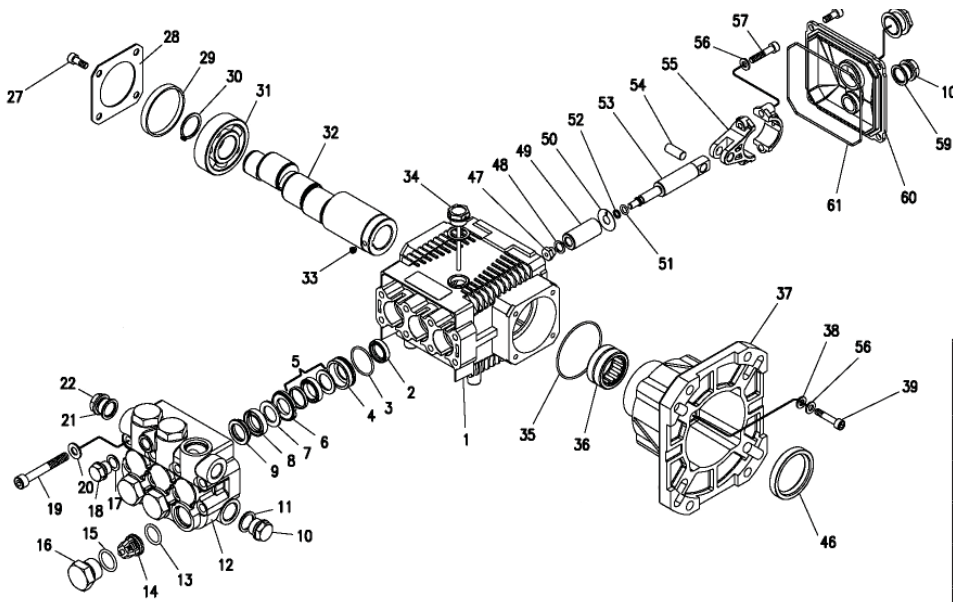
ITEM	PART NO.	DESCRIPTION	QTY
50*	See Kit Below	O-Ring Ø1.78x5.28	3
51*	See Kit Below	Teflon Ring	3
52	8.751-225.0	Plunger Rod	3
53	8.751-228.0	Connecting Rod Pin	3
54	9.803-158.0	Connecting Rod	3
55	9.803-218.0	Spring Washer	6
56	9.803-238.0	Connecting Rod Screw	6
57	8.933-016.0	O-Ring 2.62 x 126.67	1
58	8.751-229.0	Crankcase Cover	1
59	9.803-197.0	O-Ring, Ø 1.78 x 14	1
60	9.803-202.0	Sight Glass, G3/4	1

\* Part available in kit (See below)

REPAIR KIT NUMBER	8.725-358.0	8.725-359.0	8.933-023.0	9.802-603.0	9.802-609.0
KIT DESCRIPTION	Plunger U-Seal 15mm	Complete U-Seal Packing 15mm	Plunger 15mm	Complete Valve	Plunger Oil Seals
ITEM NUMBERS INCLUDED	3, 5, 7	3, 4, 5, 6, 7	46, 47, 48, 49, 50, 51	11, 12, 13	2
NUMBER OF CYLINDERS KIT WILL SERVICE	3	1	1	6	3

## G3035G PUMP EXPLODED VIEW

9.803-819.0 KG3035G2  
 8.904-897.0 LG3035G2  
 8.904-752.0 HG3035G2



TORQUE SPECS	
Item #	Ft.-lbs
16	65
19	18
27	7.6
39	8
47	7
57	13

## G3035G PUMP EXPLODED VIEW PARTS LIST

ITEM	PART NO.	DESCRIPTION	QTY	ITEM	PART NO.	DESCRIPTION	QTY
1	9.803-938.0	Crankcase	1	19	9.803-952.0	Manifold Stud Bolt	8
2*	See Kit Below	Plunger Oil Seal	3	20	9.802-884.0	Washer	8
3*	See Kit Below	O-Ring Ø1.78 x 31.47	3	21	9.803-198.0	Copper Washer 3/8"	1
4*	See Kit Below	Pressure Ring, 15mm	3	22	9.802-925.0	Brass Plug 3/8"	2
5*	See Kit Below	U Seal Assy, 15mm	3	27	9.802-939.0	Hexagonal Screw	9
6*	See Kit Below	Intermediate Ring 15mm	3	28	9.803-953.0	Bearing Cover	1
7*	See Kit Below	Backup Ring, 15mm	3	29	9.803-954.0	Seal Bearing	1
8*	See Kit Below	U-Seal Assy, 15mm	3	30	9.802-914.0	Snap Ring	1
9*	See Kit Below	Support Ring 15mm	3	31	9.803-955.0	Ball Bearing	1
10	9.802-926.0	Brass Plug, 1/2"	1	32	8.730-825.0	Crankshaft (3035G1)	1
11	9.803-199.0	Copper Washer 1/2"	1		8.730-826.0	Crankshaft (3535G1)	1
12	9.803-946.0	Manifold Housing	1		8.730-827.0	Crankshaft (4030G1)	1
13*	9.803-947.0	O-Ring Ø1.78 x 15.54	6	33	9.802-945.0	Set Screw	1
14*	See Kit Below	Valve Assembly	6	34	9.803-957.0	Oil Dip Stick	1
15*	9.803-948.0	O-Ring Ø2.62 x 18.77	6	35	9.804-581.0	O-Ring 3.53 x 55.56	1
16	9.803-949.0	Valve Plug	6	36	9.803-161.0	Needle Roller Bearing	1
17	9.803-950.0	Washer, Copper	1	37	9.803-183.0	Engine Flange	1
18	9.803-951.0	Brass Plug G1/4	1	38	9.803-210.0	Spring Washer	4

## G3035G PUMP EXPLODED VIEW PARTS LIST (CONT)

ITEM	PART NO.	DESCRIPTION	QTY
39	8.933-020.0	Flange Screw	4
46	9.803-142.0	Crankshaft Seal	1
47*	See Kit Below	Plunger Nut	3
48*	See Kit Below	Copper Washer	3
49*	See Kit Below	Plunger, 15mm	3
50*	See Kit Below	Copper Spacer	3
51*	See Kit Below	O-Ring Ø1.78x5.28	3
52*	See Kit Below	Teflon Ring	3
53	9.803-964.0	Plunger Rod	3
54	9.803-965.0	Connecting Rod Pin	3
55	9.803-966.0	Connecting Rod	3
56	9.803-218.0	Spring Washer	10
57	8.933-020.0	Connecting Rod Screw	6
58	9.803-202.0	Sight Glass, G3/4	1
59	9.803-197.0	Gasket, G3/4	1
60	9.803-968.0	Crankcase Cover	1
61	9.803-969.0	O-Ring 2.62 x 107.62	1

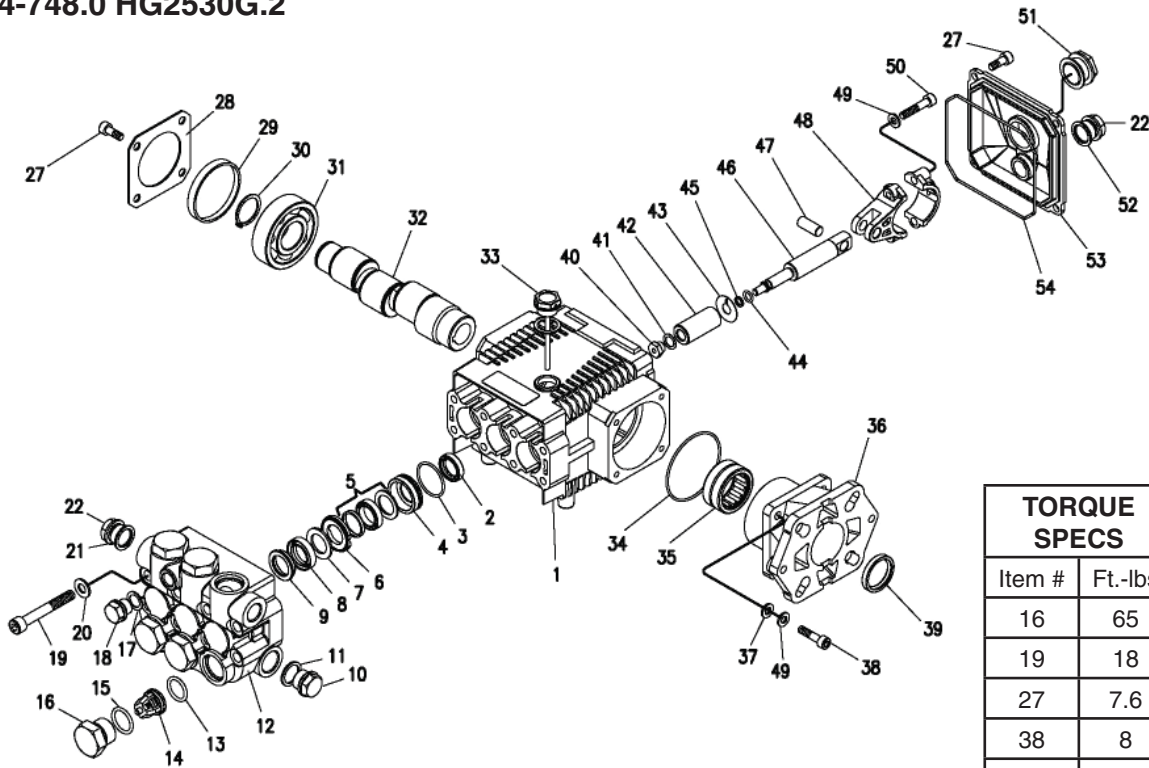
\* Part available in kit (See below)

## G3035G PUMP REPAIR KITS

REPAIR KIT NUMBER	9.802-622.0	9.802-623.0	8.933-023.0	9.802-603.0	9.802-609.0
KIT DESCRIPTION	Plunger Seal 15mm	Complete Seal Packing 15mm	Plunger 15mm	Complete Valve	Plunger Oil Seals
ITEM NUMBERS INCLUDED	4, 6, 8, 9, 10	4, 5, 6, 7, 8, 9, 10	47, 48, 49, 50, 51, 52	14, 15, 16	3

## G2530G PUMP EXPLODED VIEW

9.804-033.0 KG2530G.2  
 8.904-893.0 LG2530G.2  
 8.904-748.0 HG2530G.2



TORQUE SPECS	
Item #	Ft.-lbs
16	65
19	18
27	7.6
38	8
40	7
50	13

## G2530G PUMP EXPLODED VIEW PARTS LIST

ITEM	PART NO.	DESCRIPTION	QTY	ITEM	PART NO.	DESCRIPTION	QTY
1	9.803-938.0	Crankcase	1	19	9.803-952.0	Manifold Stud Bolt	8
2*	See Kit Below	Plunger Oil Seal	3	20	9.802-884.0	Washer	8
3*	See Kit Below	O-Ring Ø1.78 x 28.30	3	21	9.803-198.0	Copper Washer 3/8"	1
4*	See Kit Below	Pressure Ring, 15mm	3	22	9.802-925.0	Brass Plug 3/8"	2
5*	See Kit Below	U-Seal, 15mm	3	27	9.802-939.0	Hexagonal Screw	9
6*	See Kit Below	Intermediate Ring 15mm	3	28	9.803-953.0	Bearing Cover	1
7*	See Kit Below	Backup Ring 15mm	3	29	9.803-954.0	Seal Bearing	1
8*	See Kit Below	U-Seal, 15mm	3	30	9.802-914.0	Snap Ring	1
9*	See Kit Below	Support Ring, 15mm	3	31	9.803-955.0	Ball Bearing	1
10	9.802-926.0	Brass Plug, 1/2"	1	32	8.717-069.0	Crankshaft (2530G)	1
11	9.803-199.0	Copper Washer 1/2"	1	33	9.803-957.0	Oil Dip Stick	1
12	9.803-946.0	Manifold Housing	1	34	9.804-581.0	O-Ring 3.53 x 55.56	1
13*	9.803-947.0	O-Ring Ø1.78 x 15.54	6	35	9.804-582.0	Needle Roller Bearing	1
14*	See Kit Below	Valve Assembly	6	36	8.717-212.0	Engine Flange	1
15*	9.803-948.0	O-Ring Ø2.62 x 18.77	6	37	9.803-210.0	Spring Washer	4
16	9.803-949.0	Valve Plug	6	38	9.804-584.0	Flange Screw	4
17	9.803-950.0	Washer, Copper	1				
18	9.803-951.0	Brass Plug G1/4	1				

## G2530G PUMP EXPLODED VIEW PARTS LIST (CONT)

ITEM	PART NO.	DESCRIPTION	QTY
39	9.804-585.0	Crankshaft Seal	1
40*	See Kit Below	Plunger Nut	3
41*	See Kit Below	Copper Spacer	3
42*	See Kit Below	Plunger, 15mm	3
43*	See Kit Below	Copper Spacer	3
44*	See Kit Below	O-Ring Ø1.78x5.28	3
45*	See Kit Below	Teflon Ring	3
46	9.803-964.0	Plunger Rod	3
47	9.803-965.0	Connecting Rod Pin	3
45	9.803-966.0	Connecting Rod	3
49	9.803-218.0	Spring Washer	6
50	8.933-020.0	Connecting Rod Screw	6
54	9.803-969.0	O-Ring 2.62 x 107.62	1
53	9.803-968.0	Crankcase Cover	1
52	9.803-197.0	Gasket, G3/4	1
51	9.803-202.0	Sightglass G3/4	1

\* Part available in kit (See below)

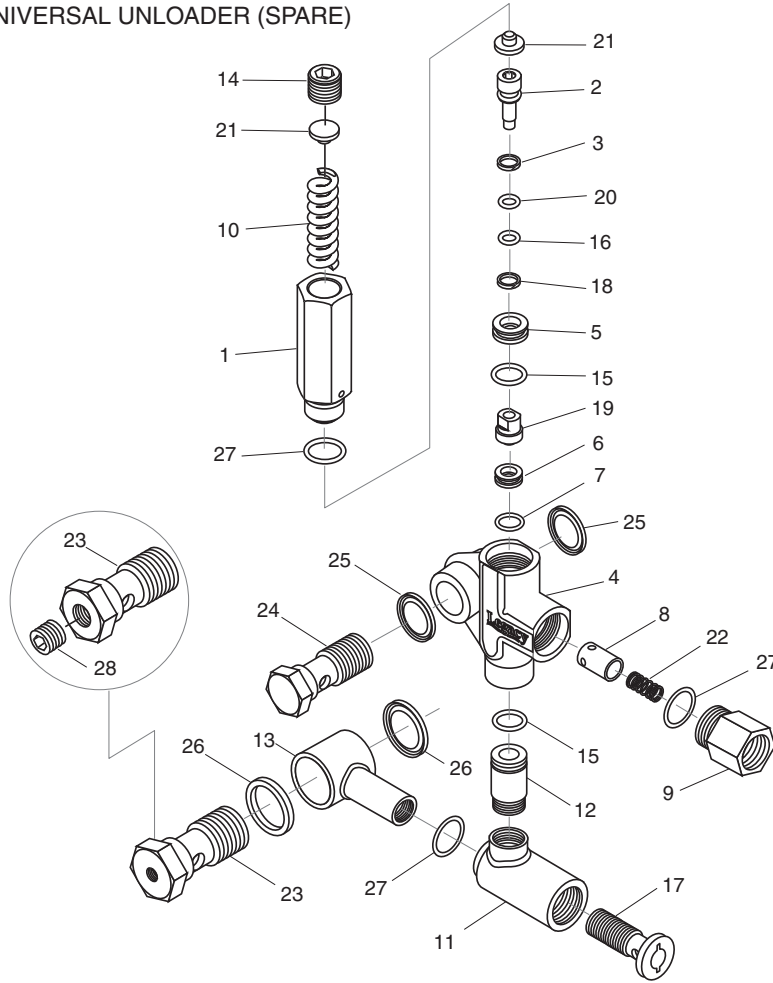
## G2530G PUMP REPAIR KITS

REPAIR KIT NUMBER	8.725-354.0	8.725-355.0	9.803-934.0	9.803-936.0	9.803-937.0
KIT DESCRIPTION	Plunger Seal 15mm	Complete Seal Packing 15mm	Plunger 15mm	Complete Valve	Plunger Oil Seals
ITEM NUMBERS INCLUDED	3, 5, 7, 8, 9	3, 4, 5, 6, 7, 8, 9	40, 41, 42, 43, 44, 45	13, 14, 15	2

# UU1 UNLOADER EXPLODED VIEW

9.175-018.0

UU1 3500PSI, UNIVERSAL UNLOADER (SPARE)

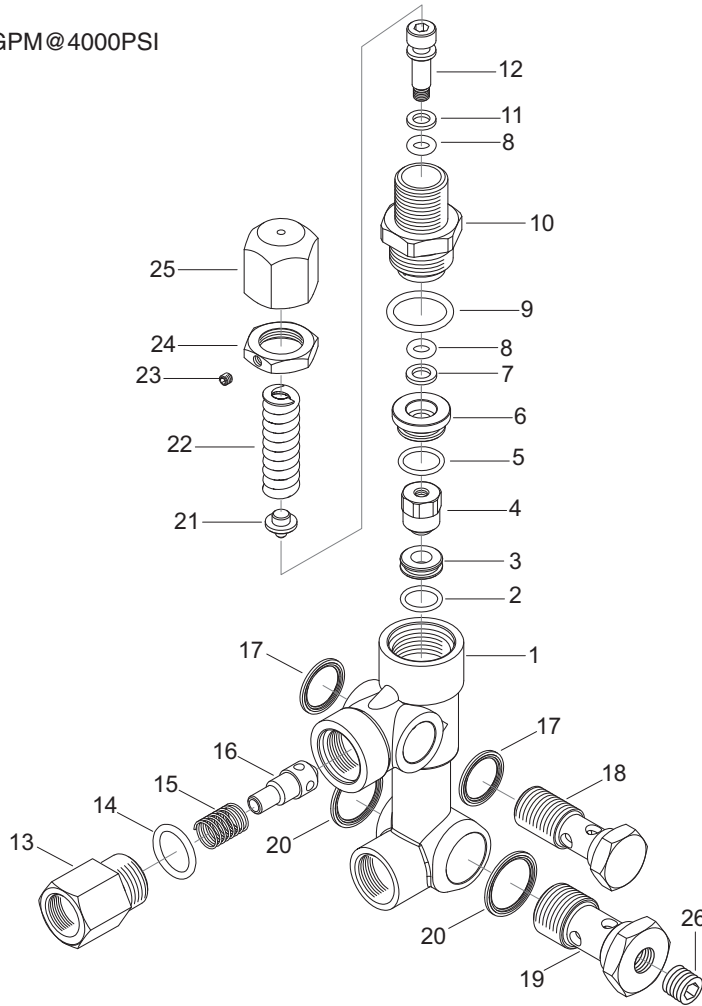


## UU1 UNLOADER EXPLODED VIEW PARTS LIST

ITEM	PART #	DESCRIPTION	KIT	QTY	ITEM	PART #	DESCRIPTION	KIT	QTY
1	8.751-394.0	Piston Housing	D	1	17	9.149-006.0	Sliding Connector Guide		1
2		Piston	C, D	1	18		O-Ring Backup 6 x 1.45 x 1.68	A, D	1
3		Piston O-Ring Back Up	A, D	1	19		Ball Housing Assy	C, D	1
4	8.749-796.0	Main Block		1	20		O-Ring 6.75 x 1.78 BN80	A, D	1
5	9.152-372.0	Piston Ring	D	1	21		Spring Seat	C, D	2
6		Ball Seat	C, D	1	22		Plunger Spring	B	1
7		O-Ring 10.5 ID x 1.5 CS	A,C,D	1	23	8.917-699.0	Banjo Bolt 1/2" Short		1
8		Plunger	B	1		8.917-700.0	Banjo Bolt 1/2"-1/4" NPT Short		1
9	9.152-016.0	Plunger Housing		1	24	8.917-698.0	Banjo Bolt 3/8" Short		1
10		Bypass Spring	C, D	1	25	9.802-893.0	Seal Washer 3/8"		2
11	9.149-001.0	Low Pressure Port		1	26	9.803-921.0	Seal Washer 1/2"		2
12	9.152-017.0	Sliding Connector, 30mm		1		9.802-893.0	Seal Washer 3/8"		2
	8.762-005.0	Sliding Connector, 40mm, Long		1	27		O-Ring 15 ID x 2CS	A,B,D	3
13	9.149-002.0	Sliding Connector H 1/2"		1	28	8.706-865.0	Plug, 1/4" Countersunk		1
	9.149-005.0	Sliding Connector H 3/8"		1	<b>Kit A</b>	9.104-038.0	O-Ring Repair Kit		
14	9.196-011.0	Plug 5/8 -18 UNF	D	1	<b>Kit B</b>	9.104-039.0	Outlet Kit		
15		O-Ring 12 ID x 2 CS	A, D	2	<b>Kit C</b>	9.104-040.0	Stem Basic Kit		
16		O-Ring 6 ID X 2 CS	A, D	1	<b>Kit D</b>	8.920-045.0	UU1 Complete Stem Kit		

## VBA UNLOADER EXPLODED VIEW

9.803-900.0  
UNLOADER (VBA), 6.6GPM@4000PSI



### VBA UNLOADER EXPLODED VIEW PARTS LIST

ITEM	PART #	DESCRIPTION	KIT	QTY	ITEM	PART #	DESCRIPTION	KIT	QTY
1		Body Valve (KG)		1	17	9.802-893.0	Seal Washer 3/8"		2
		Body Valve (KS)		1	18	9.803-919.0	Banjo Bolt 3/8" Solid Cap		1
2		O-Ring	A, C	1	19	9.803-920.0	Banjo Bolt 1/2", w 1/4" Pilot		1
3		Seat	C	1	20	9.803-921.0	Seal Washer 1/2"		2
4		Ball, Sub Assy	C	1	21		Plate	C	1
5		O-Ring	A	1	22		Spring	C	1
6	9.803-907.0	Guide Bushing		1	23	8.933-021.0	Set Screw		1
7		Teflon Ring		1	24	9.803-925.0	Nut		1
8		O-Ring	A	1	25	9.803-926.0	Brass Handle		1
9		O-Ring	A	2	26	8.706-865.0	Plug, 1/4" Countersunk		1
10	9.803-911.0	Connector		1	<b>Kit A</b>	8.717-672.0	O-Ring Repair Kit		
11		Teflon Ring	A	1	<b>Kit B</b>	8.717-673.0	Outlet Kit		
12		Stem	C	1	<b>Kit C</b>	8.717-674.0	Stem Basic Kit		
13	9.803-914.0	Connector Female		1					
14		O-Ring	A, B	1					
15		Spring	B	1					
16		Poppet	B	1					



## TROUBLESHOOTING

PROBLEM	POSSIBLE CAUSE	SOLUTION
<b>ENGINE OPERATES FOR 15 MINUTES THEN STOPS</b>	Not enough gas or engine oil	Fill tank with gas. Check oil level.
	Vapor lock developed by heat of day	Keep gas tank full to avoid vapor locking.
	Obstruction in fuel filter	Clean or replace fuel filter.
<b>ENGINE LACKS POWER</b>	Dirty air filter	Replace air filter.
<b>ENGINE FALTERS</b>	Choke is opened too soon	Move choke to halfway position until engine runs smoothly.
<b>WATER DRIPPING FROM UNDER PUMP</b>	Piston packing worn	Call local distributor.
	O-Ring plunger retainer worn	Call local distributor.
	Cracked piston	Call local distributor.
<b>OIL DRIPPING FROM UNDER PUMP</b>	Oil seal worn or damaged	Call local distributor.
<b>WATER LEAKING FROM PUMP PROTECTOR</b>	Spray gun closed with machine running 5 minutes or longer	Open spray gun or turn off machine.
	Excess water supply pressure	Place a pressure regulator at end of 50' garden hose.
<b>NO DETERGENT</b>	Detergent suction tube not properly connected to machine	Check connection.
	Detergent is too thick	Dilute detergent. For best results, use manufacturers detergent.
	Detergent filter valve is at lowest setting	Set detergent filter valve to a higher setting.
	Filter on detergent suction tube is clogged	Run warm water through filter to remove debris.
	Damaged or clogged detergent suction tube	Remove obstruction or replace detergent suction tube.
	A high pressure nozzle is attached.	Replace with black detergent nozzle.
	Discharge nozzle is obstructed	Blow out or remove debris with fine needle.
<b>GARDEN HOSE CONNECTION LEAKS</b>	Loose fittings	Tighten fittings.
	Missing/worn rubber washer	Insert new washer.
<b>SPRAY WAND LEAKS</b>	Spray wand not properly attached	Slide the spray wand into the gun. Turn the wand collar clockwise onto the spray gun threads until tight.
	Broken o-ring	Call local distributor and order an o-ring.
<b>PUMP IS NOISY</b>	Pump is sucking air	Check that hoses and fittings are air tight. Turn off machine and purge pump by squeezing trigger gun until a steady flow of water emerges through nozzle.

## TROUBLESHOOTING

PROBLEM	POSSIBLE CAUSE	SOLUTION
<b>LOW OPERATING PRESSURE</b>	Insufficient water supply. Closed faucet. Inlet hose kinked	Use larger garden hose; clean inlet water screen. Open faucet.
	Clogged inlet hose strainer	Check plumbing system for leaks. Retape leaks with teflon tape.
	Faulty or mis-adjusted unloader valve	Adjust unloader for proper pressure. Install repair kit when needed. Call local distributor.
	Worn packing in pump	Call Dealer Customer Support.
	Machine has been stored in freezing temperatures	Thaw out machine completely, including hose, spray gun and wand.
	Slow engine RPM	Call local distributor.
<b>FLUCTUATING PRESSURE</b>	Worn or dirty pump valves	Call local distributor.
	Nozzle is obstructed	Blow out or remove debris with fine needle.
	Pump sucking air, inlet hose leaking	Check that all hoses and fittings are airtight. Turn off machine and trigger spray gun until a steady flow of water emerges through the nozzle.
	Insufficient water supply	Turn water on full force. Check garden hose for kinks, leaks or blockage.
<b>PRESSURE LOW AFTER PERIOD OF NORMAL USE</b>	Nozzle worn	Replace nozzle.
	Unloader valve worn	Replace unloader valve.
<b>ENGINE WILL NOT START OR STOPS WHILE OPERATING</b>	Low oil shutdown	Fill engine with oil.
	Out of gas	Fill fuel tank.
	Water in gasoline	Drain gas tank; fill with clean fuel.
<b>ENGINE IS OVERLOADED</b>	Nozzle partially blocked	Clean nozzle.
	Excessive pressure from high engine RPM	Adjust engine throttle to lower RPM.
<b>WATER OR OIL LEAKING FROM BOTTOM OF PUMP</b>	A small amount of leaking is normal	If excessive leaking occurs, Call local distributor.
<b>PRESENCE OF WATER IN PUMP OIL</b>	Water sprayed at machine	Change oil. Direct spray away from machine.
	High humidity in air	Check and change oil twice as often.
	Piston packing worn. Oil seal worn.	Call local distributor.

## PREVENTATIVE MAINTENANCE

This pressure washer was produced with the best available materials and quality craftsmanship. However, you as the owner have certain responsibilities for the correct care of the equipment. Attention to regular preventative maintenance procedures will assist in preserving the performance of your equipment. Contact your dealer for maintenance. Regular preventative maintenance will add many hours to the life of your pressure washer. Perform maintenance more often under severe conditions. Check pump oil and engine oil level before first use of your new pressure washer.

### MAINTENANCE SCHEDULE

Engine Oil	Inspect	Daily
	Change	First month or 20 hours. Every 100 hours or every 6 months after first month
	Filter	Every 50 hours
Air Cleaner/Filter	Inspect	Every 50 hours
	Clean	Monthly
Engine Fuel Filter		500 hours or 6 months
Spark Plug Maintenance		300 hours or annually
Clean Fuel Tank(s)		Annually
Replace Fuel Lines		Annually
Pump Oil	Inspect	Oil level daily
	Change	After first 50 hours, then every 500 hours or annually
Replace High Pressure Nozzle		Every 6 months
Replace Quick Connects/O-Rings		Annually/As needed
Clean Water Screen/Filter		Weekly
Replace HP Hose		Annually (if there are any signs of wear)

## OIL CHANGE RECORD

Check pump oil and engine oil level before first use of your new pressure washer.

Date Oil Changed Month/Day/Year	Estimated Operating Hours Since Last Oil Change

Date Oil Changed Month/Day/Year	Estimated Operating Hours Since Last Oil Change

Form #8.917-990.0 • HD, PCA, DBA, DGA • Rev. 09/14

Printed in U.S.A. or Mexico